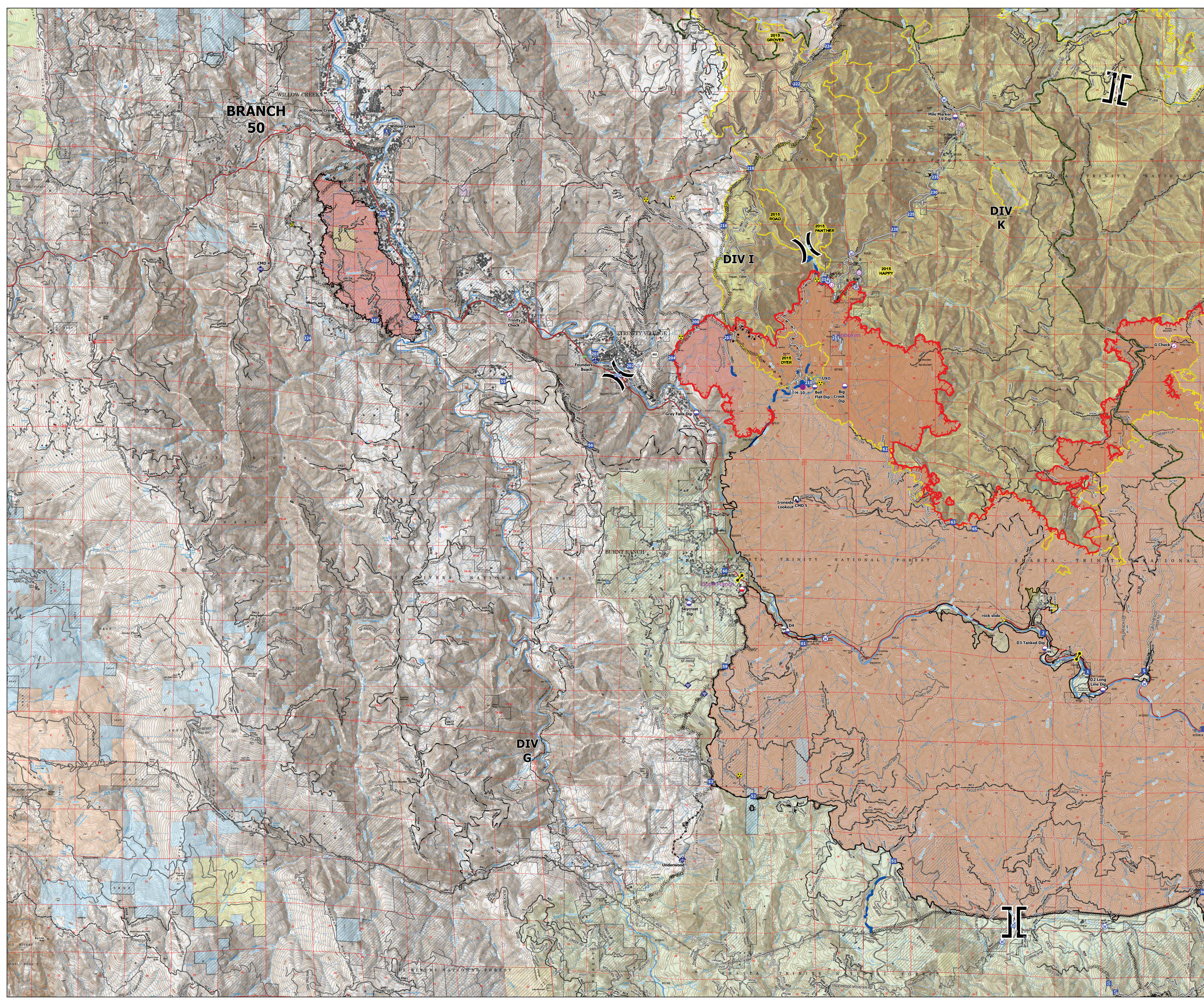


**Branch 50**  
 Monument  
 CA-SHF-001187  
 09/21/2021  
 218639 acres as of  
 09/19/2021 at 2200



- Check Point
- Dip Site
- Mobile Retardant Base
- Helispot
- Helibase
- Unimproved Landing Area
- ↳ Division Break
- ↳ Branch Break
- Drop Point
- Camp
- Staging Area
- Lookout
- Hot Spot - Spot Fire
- Value at Risk
- Fire Station
- Bridge
- ◆ Mobile Weather Unit
- ◆ Internet Access
- ◆ Repeater
- ▲ Safety Zone
- ▲ Hazard
- Water Source
- Soft Closure
- Buildings
- Active Burnout
- Completed Dozer Line
- Completed Hand Line
- Completed Mixed Construction Line
- Completed Road as Line
- Planned Dozer Line
- Planned Hand Line
- Planned Road as Line
- Access or Improved Road
- Other
- Fire Edge
- Contained Line
- Wildfire Daily Fire Perimeter
- National Wilderness Area
- BARNUM TIMBER COMPANY
- Crane Mills
- FGF US Forest Holdings INC
- GREEN DIAMOND RESOURCES COMPANY
- Sierra Pacific Industries
- SOPER WHEELER COMPANY
- Trinity Timberlands LLC
- Non-FS Lands
- Historical Wildfires

