

IAP Map Index

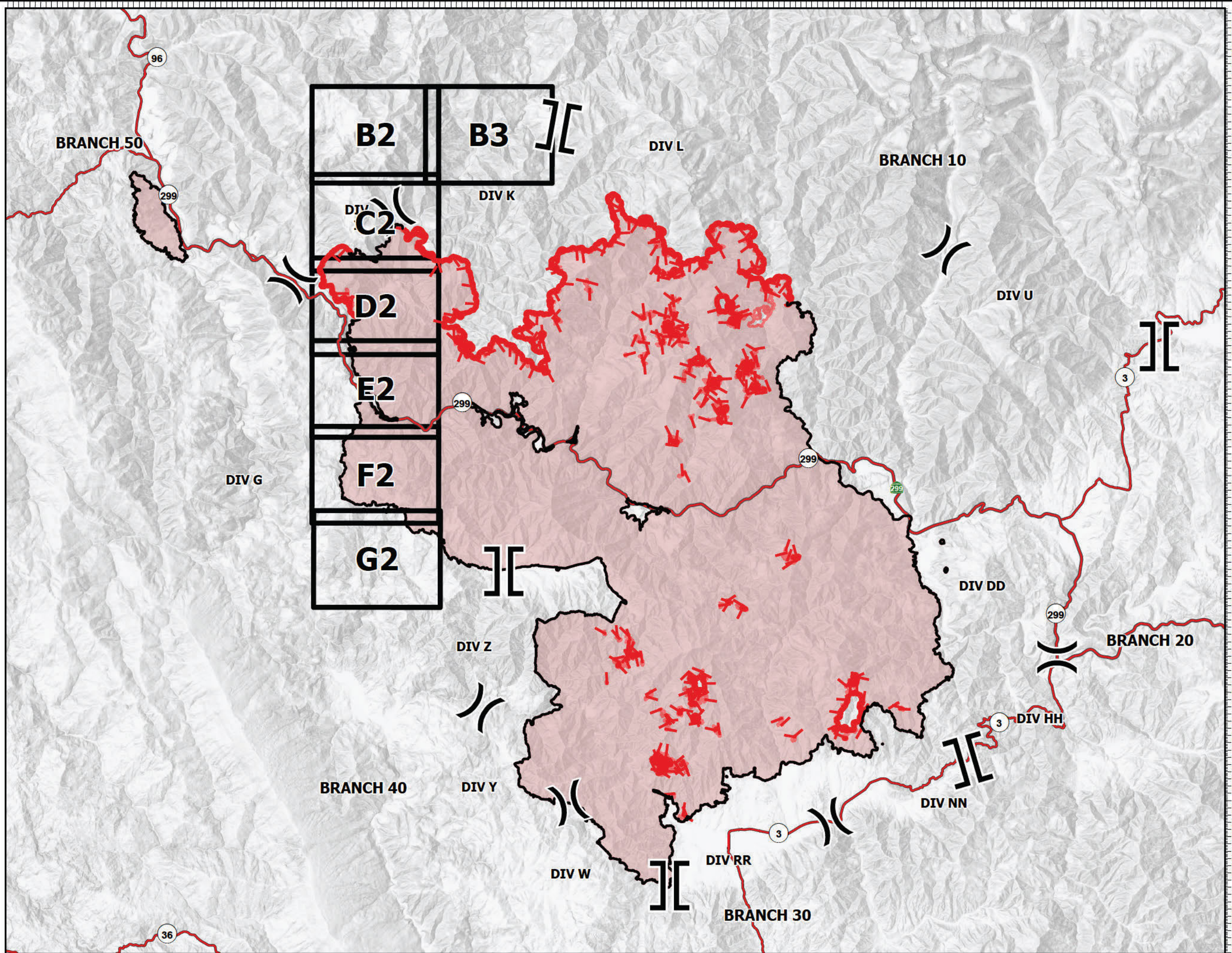
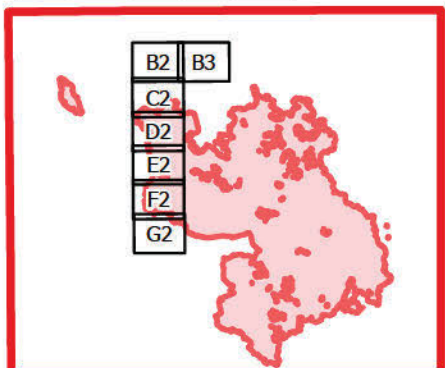
Division G-I-K

Monument
CA-SRF-000795
09/25/2021

- () Division Break
- || Branch Break
- ▬ Fire Edge
- ▬ Contained Line
- ▬ Major Roads
- ▭ Map with ID
- ▭ Wildfire Daily Fire Perimeter



0 1 2 3 4 5 Miles









IAP Map

Monument
CA-SRF-000795
09/25/2021

Division K
Map: B2

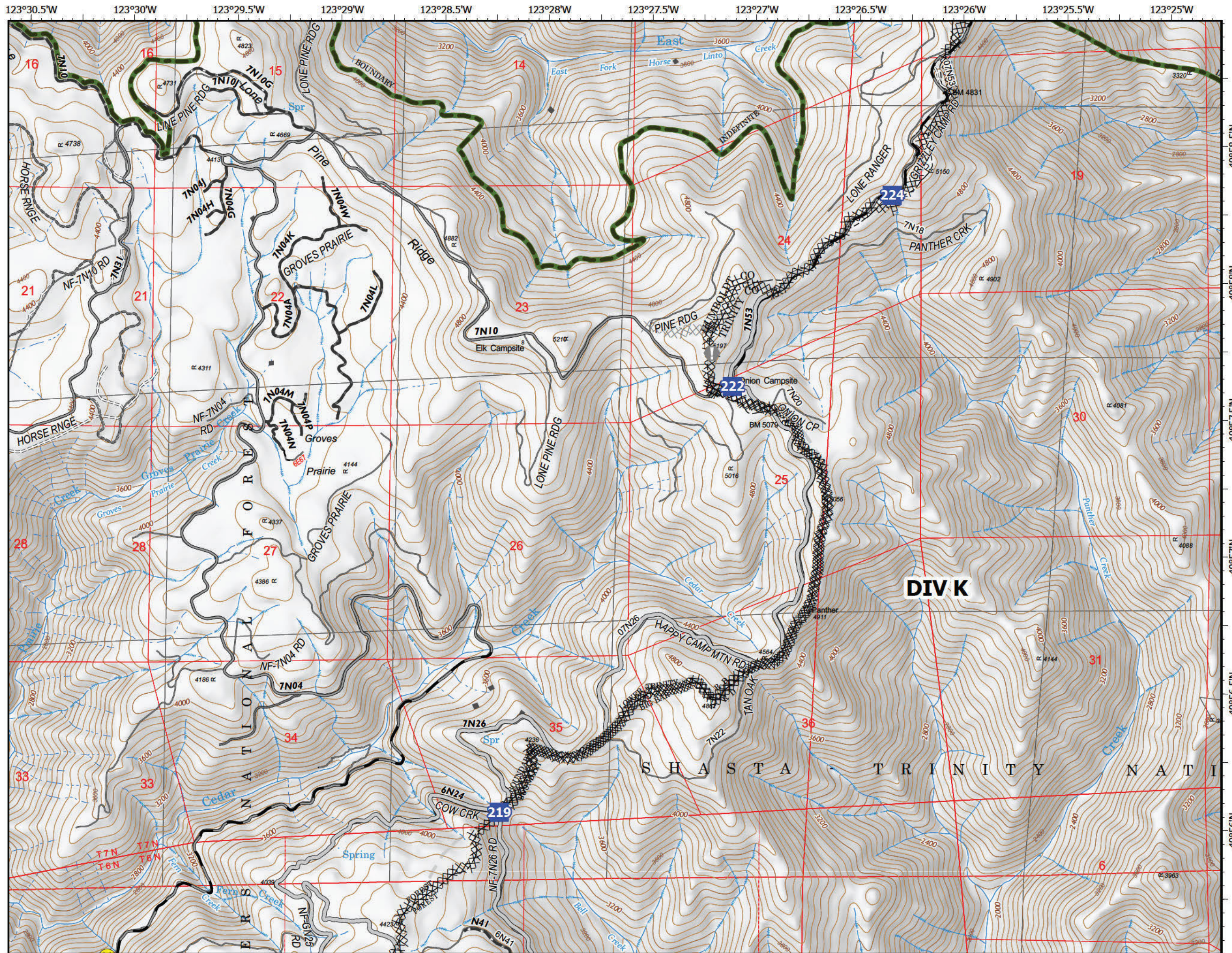
219,344 acres
NAD 1983 UTM Zone 10N

-  Drop Point
-  Value at Risk
-  Hazard
-  Completed Dozer Line
-  Planned Dozer Line
-  Access or Improved Road



0 0.25 0.5 Miles

B2	B3
C2	
D2	
E2	
F2	
G2	










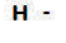




IAP Map

Monument
CA-SRF-000795
09/25/2021

Division K
Map: B3

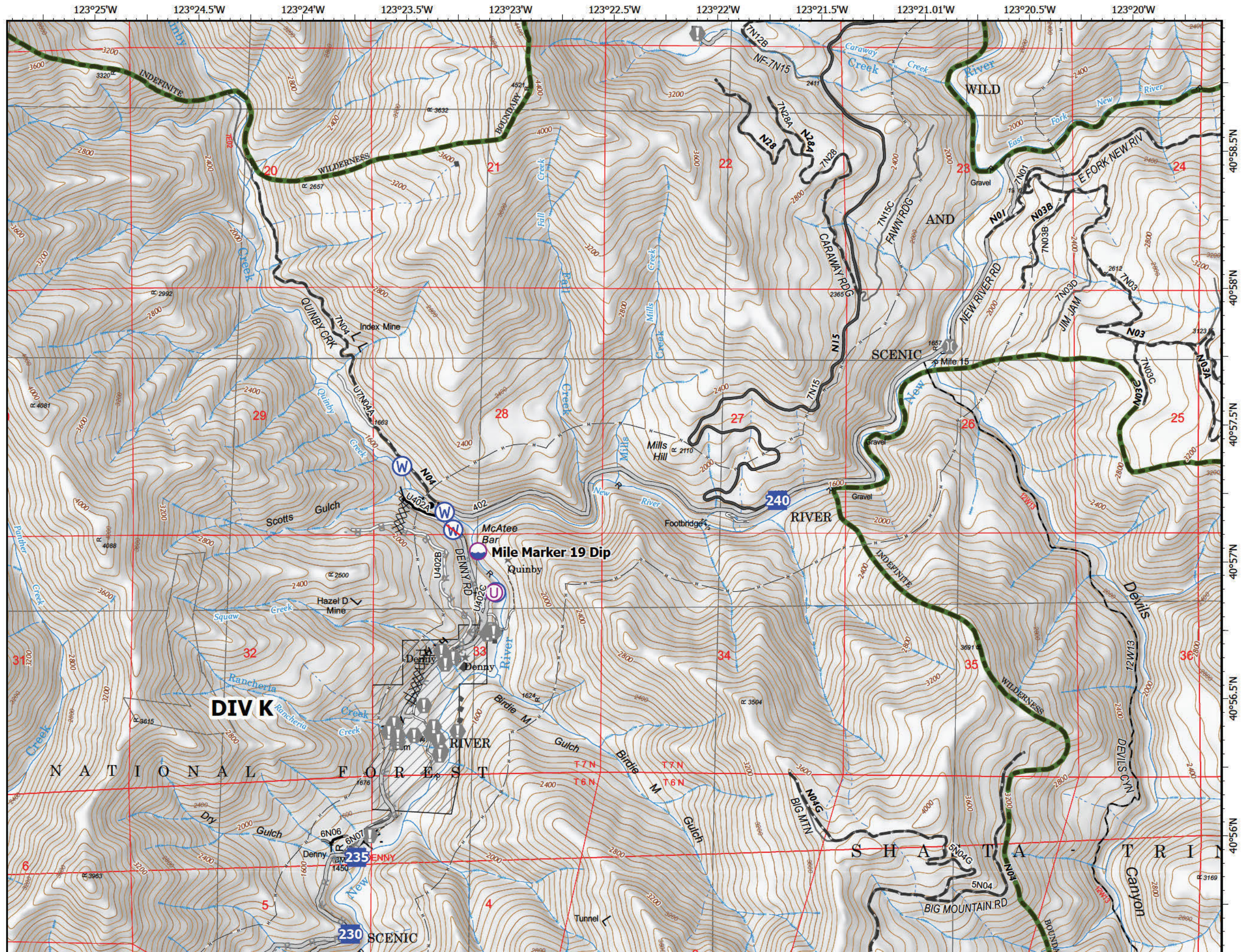
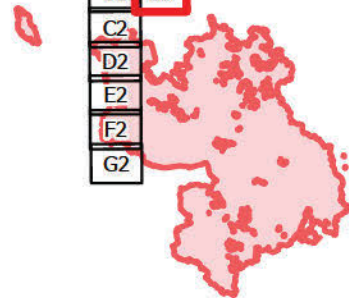
219,344 acres
NAD 1983 UTM Zone 10N

-  Dip Site
-  Unimproved Landing Area
-  Drop Point
-  Value at Risk
-  Bridge
-  Water Source
-  Restricted Water Source
-  Active Burnout
-  Completed Dozer Line
-  Completed Hand Line
-  Planned Road as Line
-  Access or Improved Road



0 0.25 0.5 Miles

B2	B3
C2	
D2	
E2	
F2	
G2	








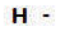
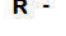











IAP Map

Monument
CA-SRF-000795
09/25/2021

Division I Map: C2

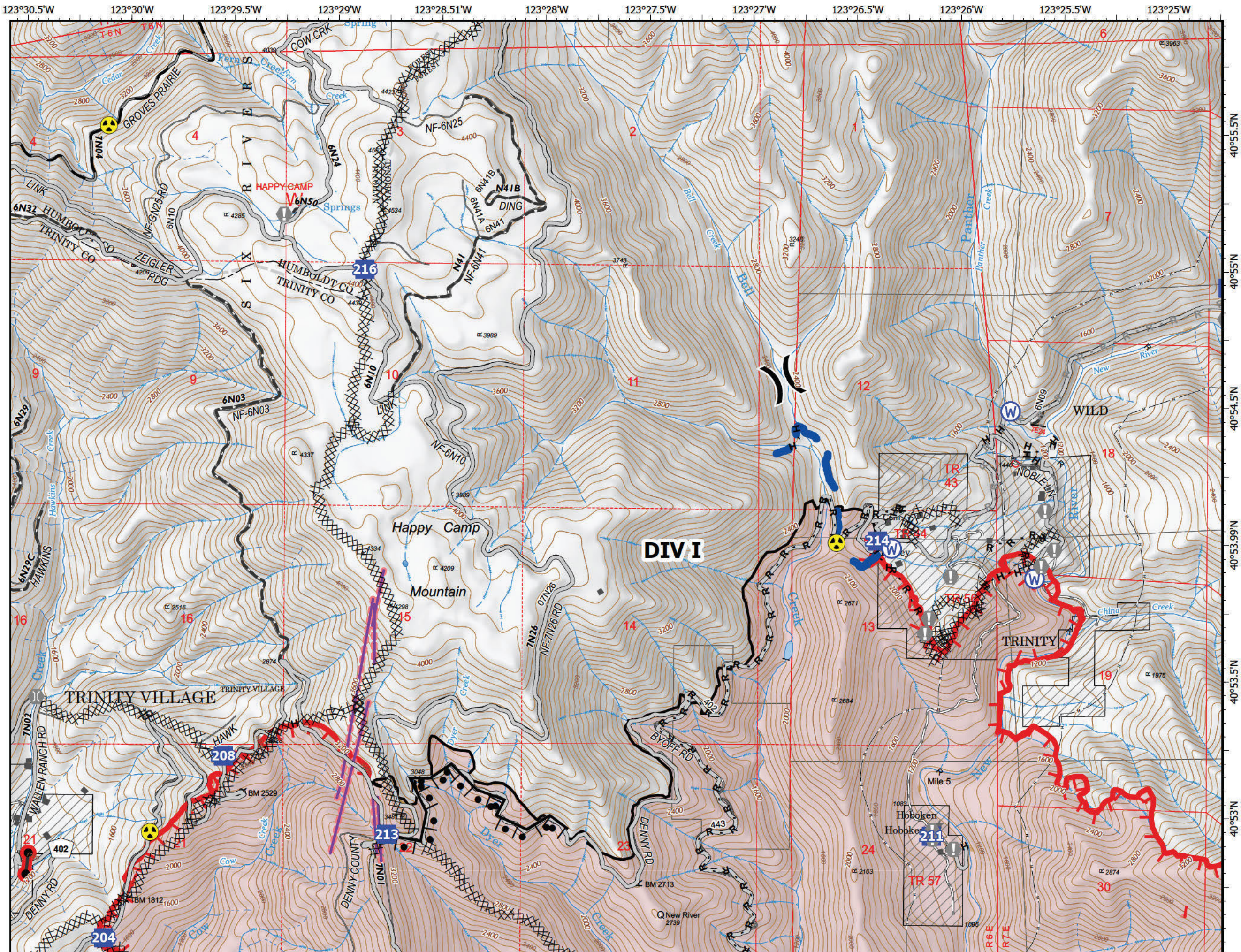
219,344 acres
NAD 1983 UTM Zone 10N

-  Division Break
-  Drop Point
-  Value at Risk
-  Bridge
-  Hazard
-  Water Source
-  Active Burnout
-  Completed Dozer Line
-  Completed Hand Line
-  Completed Road as Line
-  Planned Road as Line
-  Access or Improved Road
-  Zone Boundary
-  Road Repair
-  Retardant Drop
-  Fire Edge
-  Containment Line
-  Wildfire Perimeter



0 0.25 0.5 Miles

B2	B3
C2	
D2	
E2	
F2	
G2	








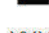
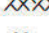
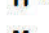
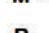
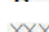











IAP Map

Monument
CA-SRF-000795
09/25/2021

Division I
Map: D2

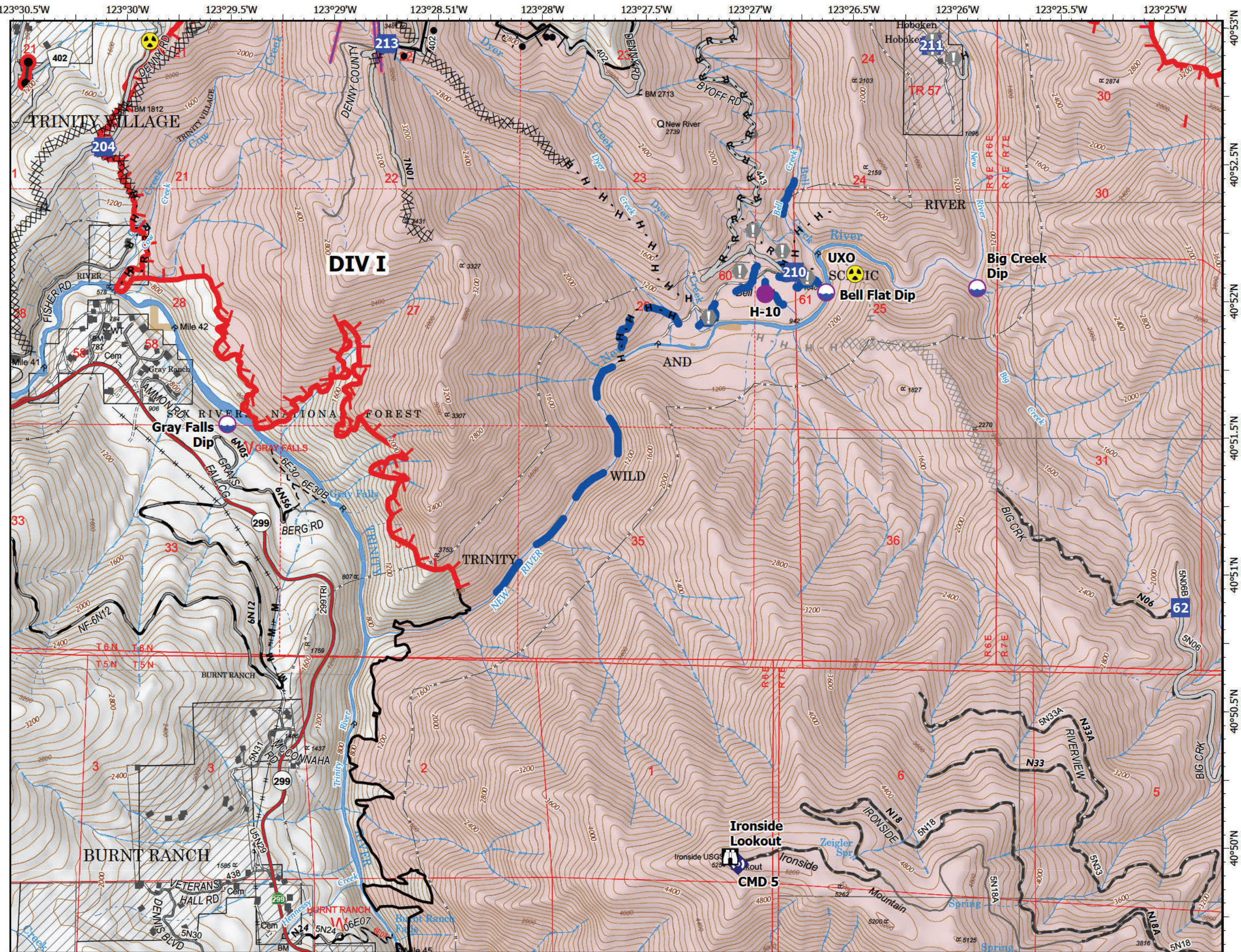
219,344 acres
NAD 1983 UTM Zone 10N

-  Dip Site
-  Helispot
-  Drop Point
-  Lookout
-  Value at Risk
-  Repeater
-  Hazard
-  Active Burnout
-  Completed Dozer Line
-  H - Completed Hand Line
-  M - Completed Mixed Construction Line
-  R - Completed Road as Line
-  Planned Dozer Line
-  H - Planned Hand Line
-  Access or Improved Road
-  Zone Boundary
-  Road Repair
-  Retardant Drop
-  Fire Edge
-  Contained Line
-  Wildfire Damage Perimeter



0 0.25 0.5 Miles

B2	B3
C2	
D2	
E2	
F2	
G2	






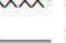



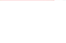


IAP Map

Monument
CA-SRF-000795
09/25/2021

Division G
Map: E2

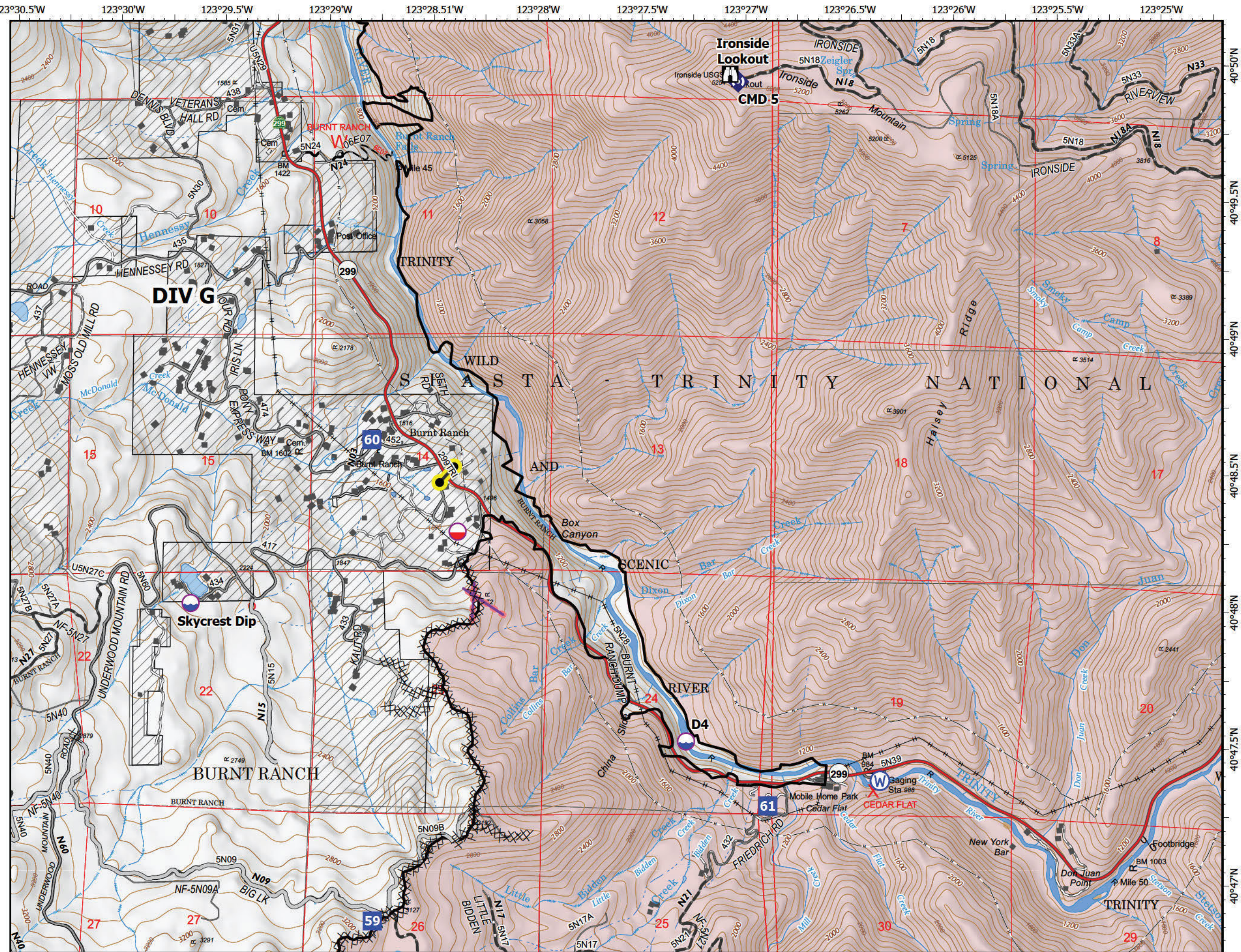
219,344 acres
NAD 1983 UTM Zone 10N

-  Dip Site
-  Mobile Retardant Base
-  Drop Point
-  Lookout
-  Repeater
-  Water Source
-  Completed Dozer Line
-  Access or Improved Road
-  Retardant Drop
-  Contained Line
-  Wildfire Daily Fire Perimeter



0 0.25 0.5 Miles

B2	B3
C2	
D2	
E2	
F2	
G2	



IAP Map

Monument
CA-SRF-000795
09/25/2021

Division G
Map: F2

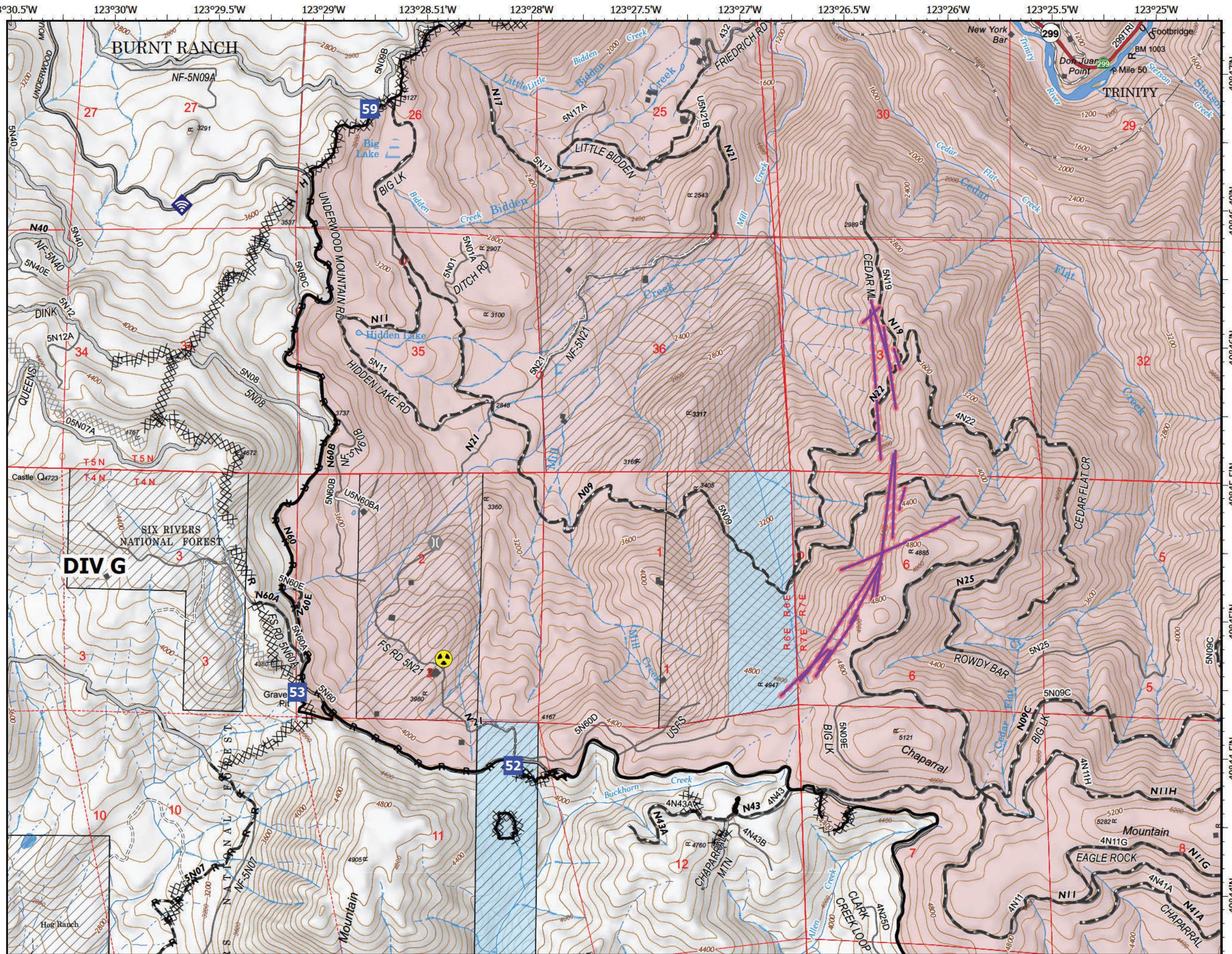
219,344 acres
NAD 1983 UTM Zone 10N

- Drop Point
- Bridge
- Internet Access
- Hazard
- Completed Dozer Line
- Completed Hand Line
- Completed Road as Line
- Planned Dozer Line
- Planned Road as Line
- Access or Improved Road
- Retardant Drop
- Contained Line
- Sierra Pacific Industries
- Wildfire Daily Fire Perimeter



0 0.25 0.5 Miles

B2	B3
C2	
D2	
E2	
F2	
G2	



IAP Map

Monument
CA-SRF-000795
09/25/2021

Division G
Map: G2

219,344 acres
NAD 1983 UTM Zone 10N

- Drop Point
- Mobile Weather Unit
- Completed Dozer Line
- Completed Hand Line
- Completed Road as Line
- Planned Dozer Line
- Planned Road as Line
- Access or Improved Road
- Zone Boundary
- Contained Line
- Sierra Pacific Industries
- Wildfire Daily Fire Perimeter



0 0.25 0.5 Miles

B2	B3
C2	
D2	
E2	
F2	
G2	

