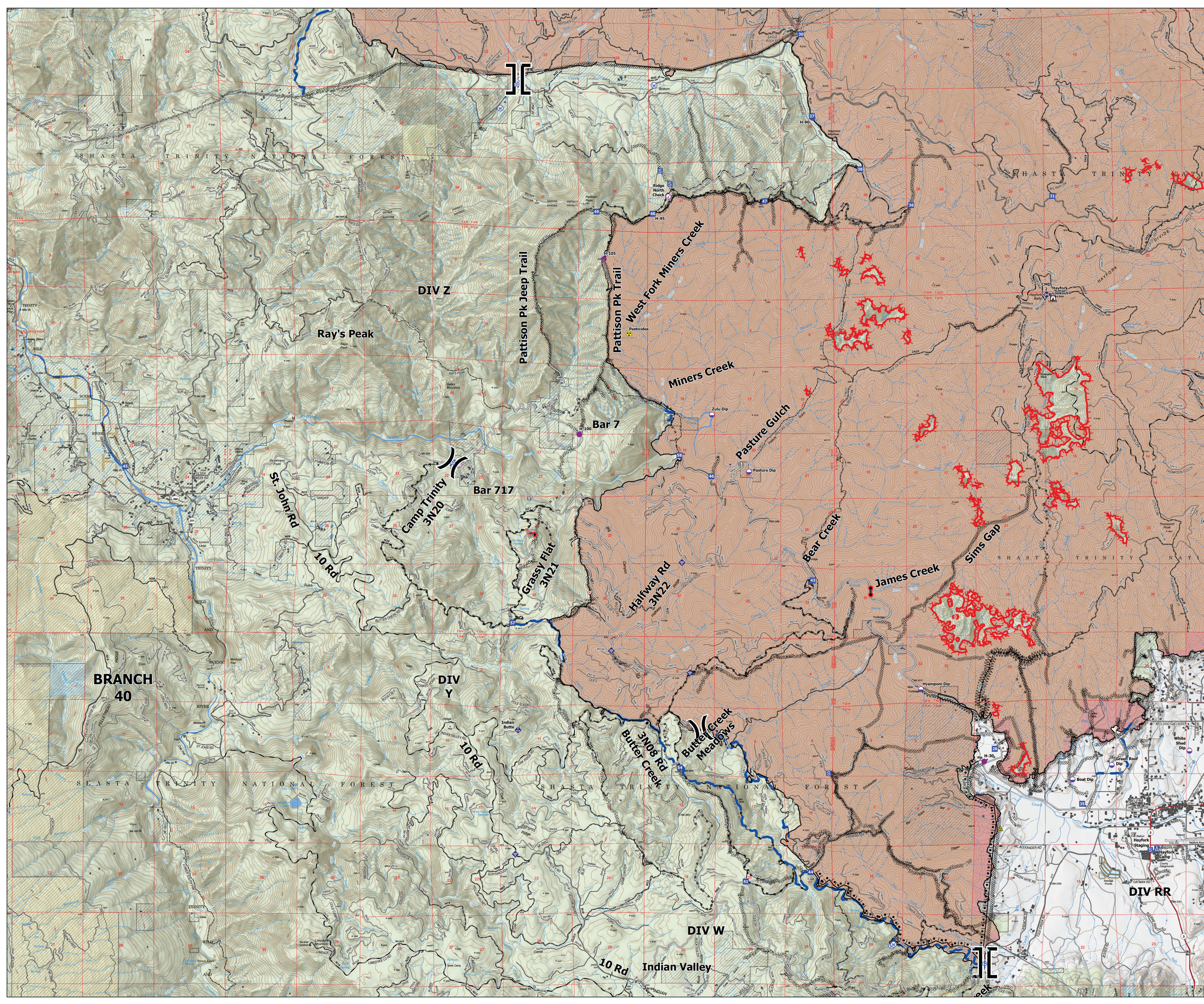
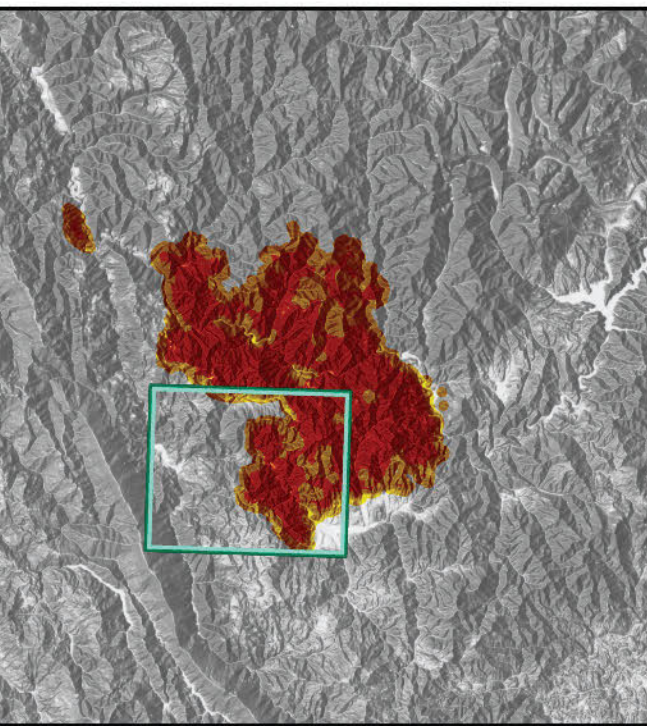
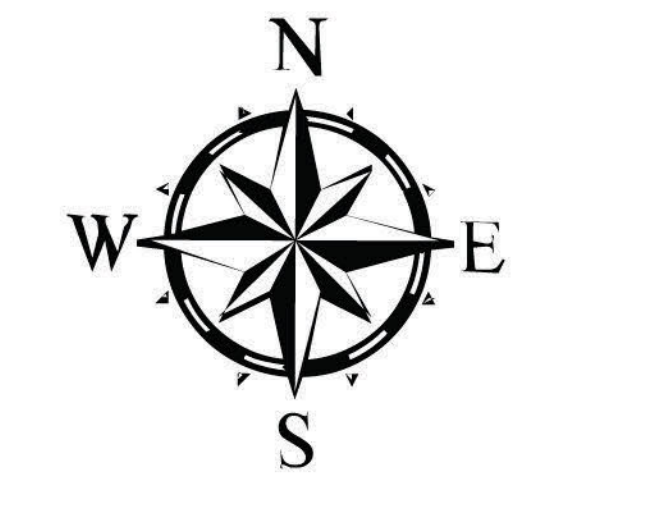


**Branch 40**

Monument  
CA-SRF-000795  
09/26/2021  
219,423 acres as of  
09/24/2021 at 1850

- Check Point
- Dip Site
- Helispot
- Unimproved Landing Area
- ⋈ Division Break
- ⋈ Branch Break
- Drop Point
- Camp
- Staging Area
- Lookout
- Hot Spot - Spot Fire
- Value at Risk
- Bridge
- Mobile Weather Unit
- Repeater
- Internet Access
- Repeater
- Safety Zone
- Hazard
- Water Source
- Road Closure
- Buildings
- Active Burnout
- ⋈ Completed Dozer Line
- ⋈ Completed Fuel Break
- ⋈ Completed Mixed Construction Line
- ⋈ Completed Road as Line
- ⋈ Planned Dozer Line
- ⋈ Planned Hand Line
- ⋈ Planned Mixed Construction Line
- ⋈ Planned Road as Line
- ⋈ Access or Improved Road
- ⋈ Other
- ⋈ Road Repair
- ⋈ Fire Edge
- ⋈ Contained Line
- ⋈ Other
- Wildfire Daily Fire Perimeter
- Crane Mills
- Sierra Pacific Industries
- Trinity Timberlands LLC
- Non-FS Lands
- Historical Wildfires



**BRANCH 40**

**DIV Z**

**DIV Y**

**DIV W**

**DIV RR**

Ray's Peak

Pattison Pk Jeep Trail

Pattison Pk Trail

Miners Creek

Pasture Gulch

Bear Creek

James Creek

Sims Gap

Butter Creek Meadows

Indian Valley

St. John Rd

10 Rd

Camp Trinity 3N20

Bar 717

Grassy Flat 3N21

Halfway Rd 3N22

3N08 Rd

10 Rd