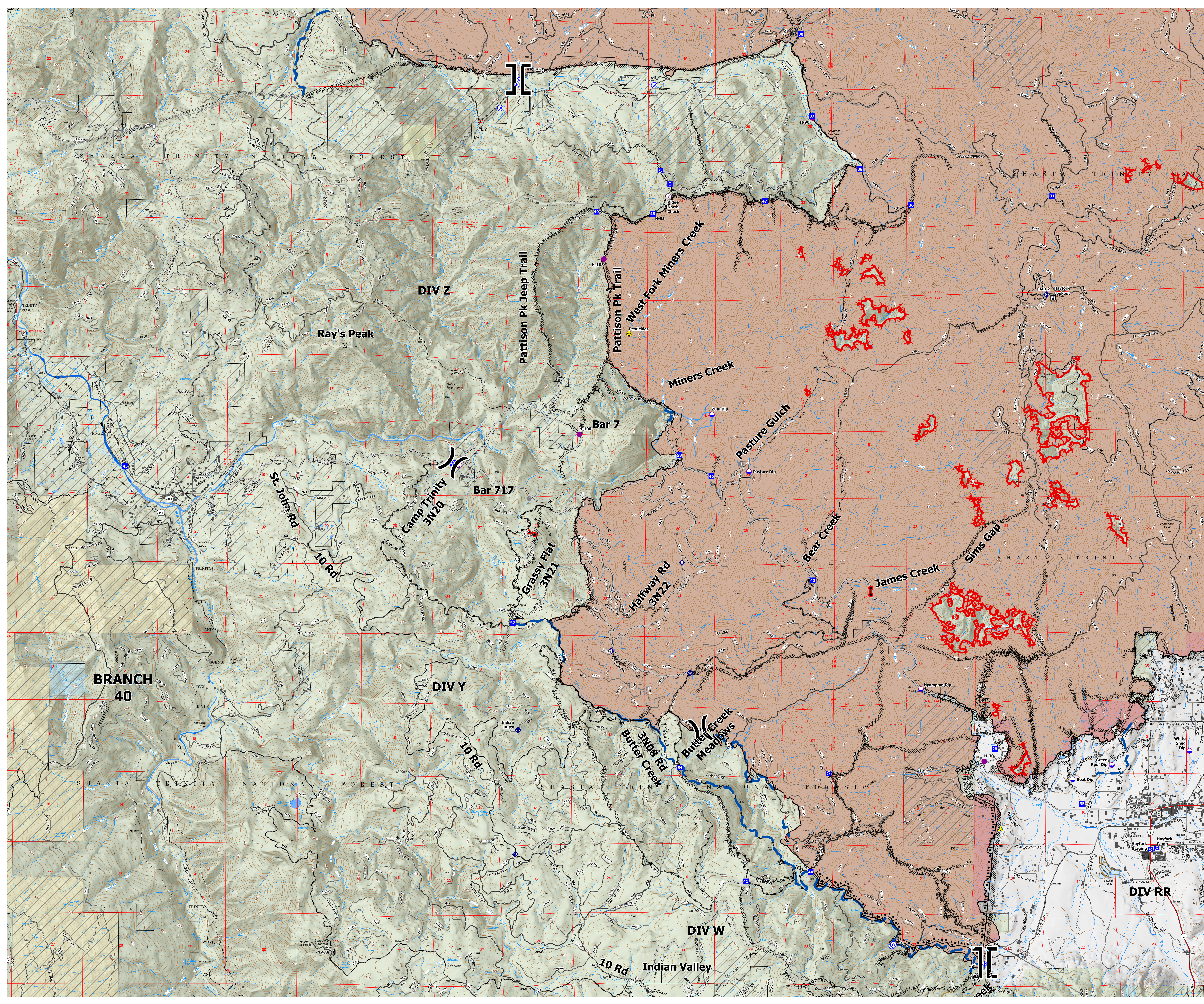
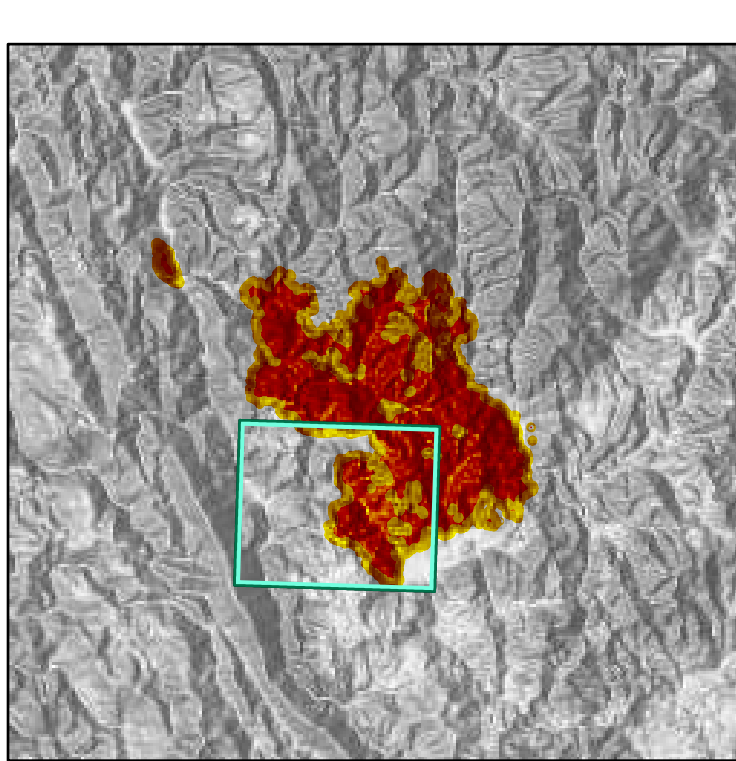
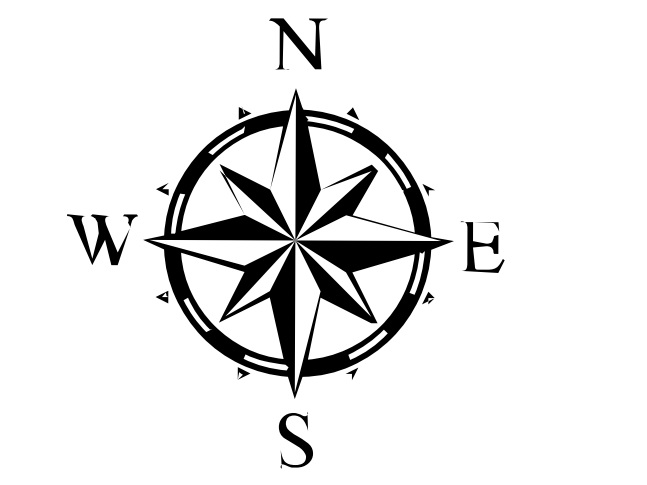
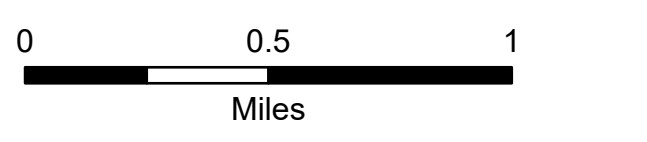


- Check Point
- Dip Site
- Helispot
- Unimproved Landing Area
- ✕ Division Break
- ✕ Branch Break
- Drop Point
- Camp
- Staging Area
- Lookout
- Hot Spot - Spot Fire
- Value at Risk
- Bridge
- Mobile Weather Unit
- Internet Access
- Repeater
- Safety Zone
- Hazard
- Water Source
- Road Closure
- Buildings
- Active Burnout
- Completed Dozer Line
- Completed Fuel Break
- Completed Hand Line
- Completed Mixed Construction Line
- Completed Road as Line
- Planned Dozer Line
- Planned Hand Line
- Planned Mixed Construction Line
- Planned Road as Line
- Access or Improved Road
- Other
- Road Repair
- Fire Edge
- Contained Line
- Other
- Wildfire Daily Fire Perimeter
- Crane Mills
- Sierra Pacific Industries
- Trinity Timberlands LLC
- Non-FS Lands
- Historical Wildfires
- IR 2021/09/25 1815
- IR Isolated Heat Source
- IR Heat Perimeter
- IR Intense Heat
- IR Scattered Heat



BRANCH 40

DIV Z

DIV Y

DIV W

DIV RR

Ray's Peak

Pattison Pk Jeep Trail

Pattison Pk Trail

Miners Creek

Pasture Gulch

James Creek

Sims Gap

Halfway Rd 3N22

Butter Creek 3N08 Rd

Indian Valley

Camp Trinity 3N20

Grassy Flat 3N21

Butter Creek Meadows

10 Rd

10 Rd

10 Rd

10 Rd

Bar 717

Bar 7

Indian Valley

Hayfork Camp

Hayfork Staging

Green Roof Dip

Boat Dip

White Shed Dip

Hayfork

Hayfork

Hayfork

Hayfork

Hayfork

Hayfork

Hayfork

Hayfork

Hayfork

Hayfork

Hayfork

Hayfork

Hayfork

Hayfork

Hayfork

Hayfork

Hayfork

Hayfork

Hayfork

Hayfork

Hayfork

Hayfork

Hayfork

Hayfork

Hayfork

Hayfork

Hayfork

Hayfork

Hayfork

Hayfork

Hayfork

Hayfork

Hayfork

Hayfork

Hayfork

Hayfork

Hayfork

Hayfork

Hayfork

Hayfork