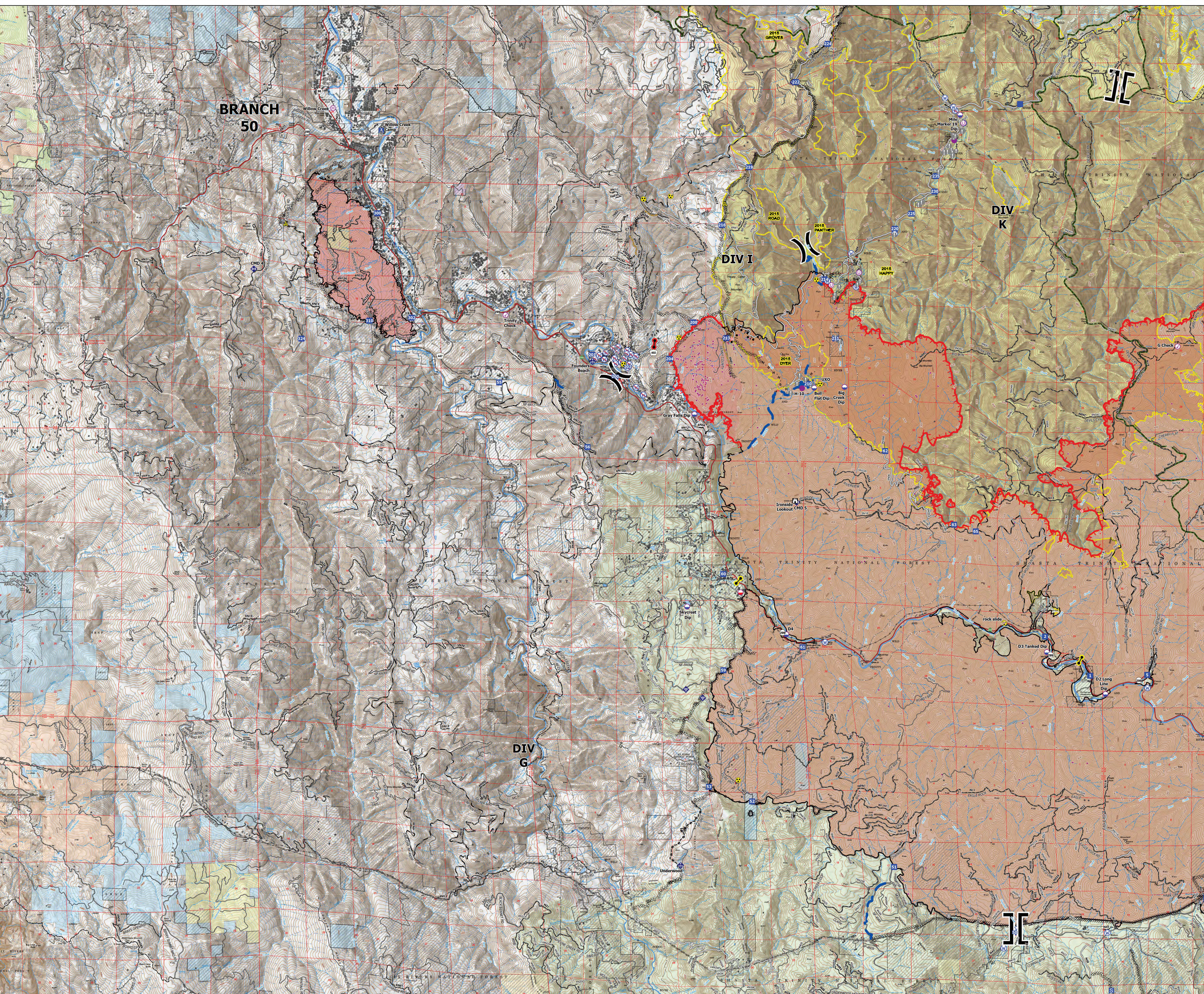


Branch 50

Monument
CA-SHF-001187
09/28/2021
223,001 acres as of
09/27 at 1600



- Check Point
- Dip Site
- Mobile Retardant Base
- Helispot
- Helibase
- Unimproved Landing Area
- Division Break
- ▭ Branch Break
- ▭ Drop Point
- ▭ Camp
- ▭ Staging Area
- ▭ Lookout
- Hot Spot - Spot Fire
- Value at Risk
- Fire Station
- Bridge
- Mobile Weather Unit
- Internet Access
- Repeater
- ▲ Safety Zone
- ▲ Hazard
- Water Source
- Restricted Water Source
- Soft Closure
- Road Closure
- ▭ Buildings
- ▭ Active Burnout
- ▭ Completed Dozer Line
- ▭ Completed Hand Line
- ▭ Completed Mixed Construction Line
- ▭ Completed Road as Line
- ▭ Planned Dozer Line
- ▭ Planned Hand Line
- ▭ Planned Road as Line
- ▭ Access or Improved Road
- ▭ Other
- ▭ Road Repair
- ▭ Fire Edge
- ▭ Contained Line
- ▭ Wildfire Daily Fire Perimeter
- ▭ National Wilderness Area
- ▭ BARNUM TIMBER COMPANY
- ▭ Crane Mills
- ▭ FGF US Forest Holdings INC
- ▭ GREEN DIAMOND RESOURCES COMPANY
- ▭ Sierra Pacific Industries
- ▭ SOPER WHEELER COMPANY
- ▭ Trinity Timberlands LLC
- ▭ Non-FS Lands
- ▭ Historical Wildfires
- IR 20210924 1850

