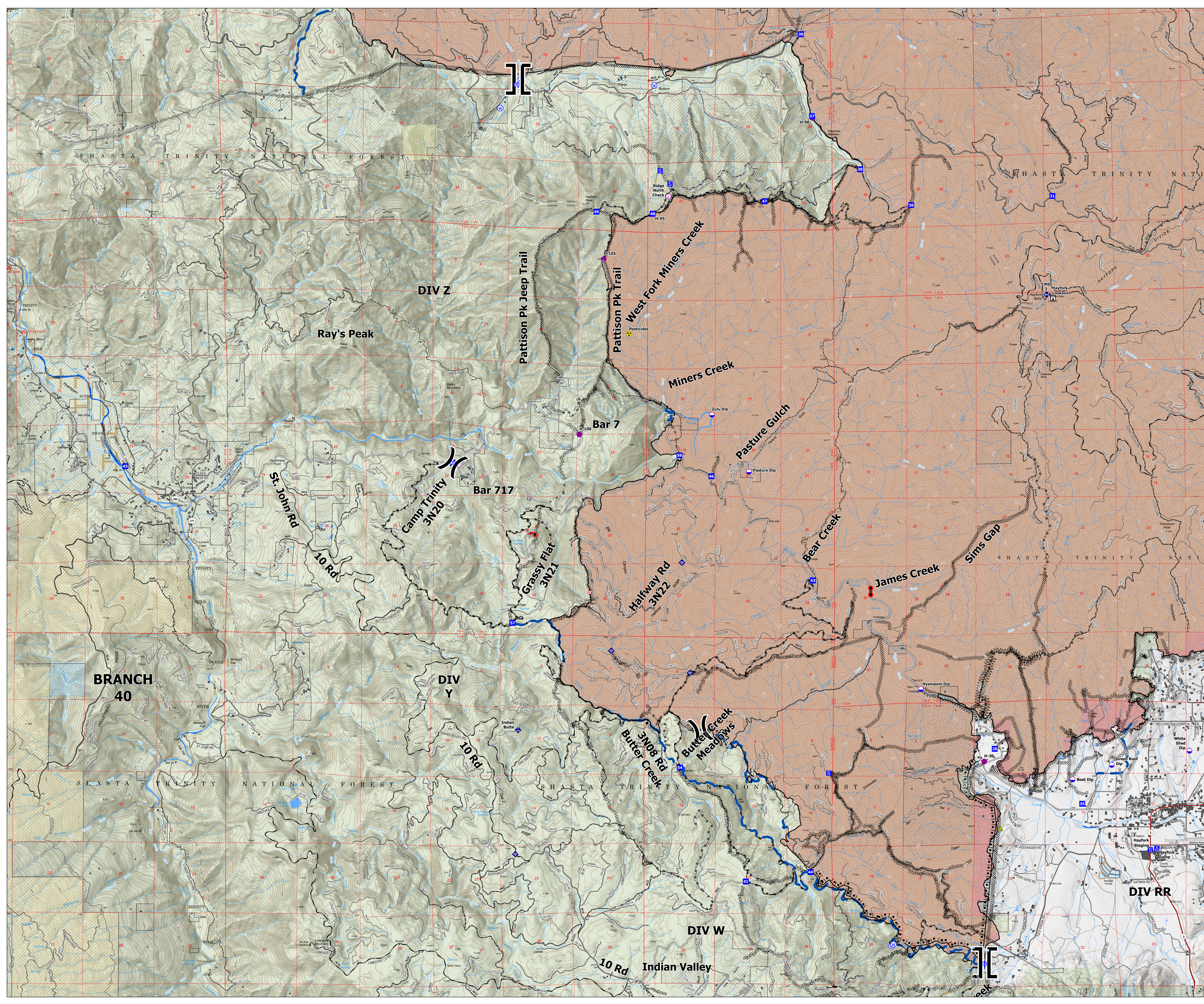
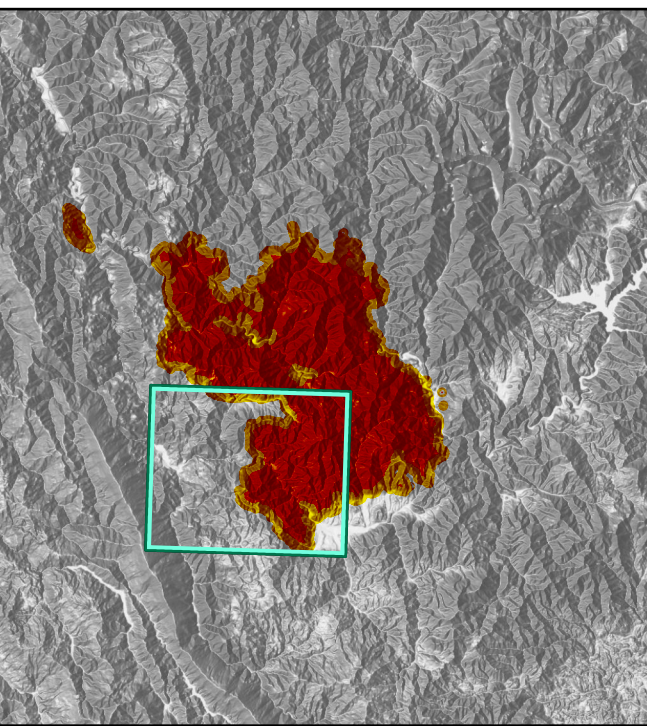
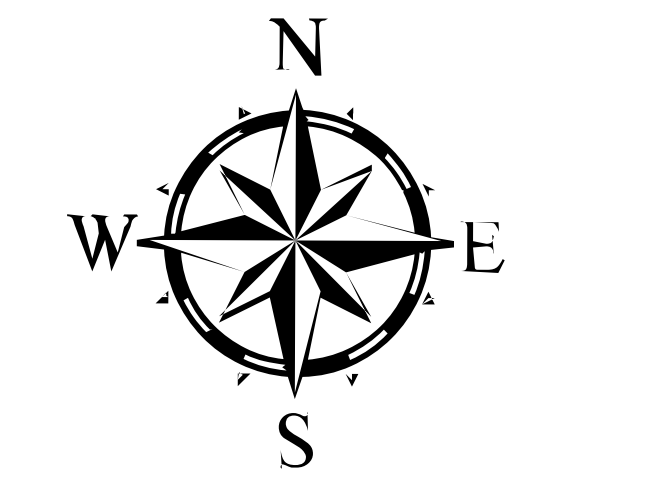
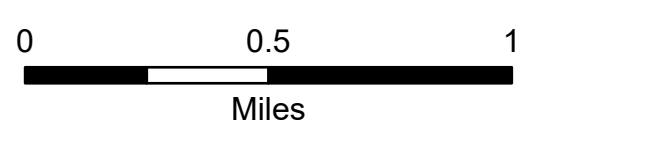


Branch 40

Monument
CA-SHF-001187
09/28/2021
223,001 acres as of
09/27 at 1600

- Check Point
- Dip Site
- Helispot
- Unimproved Landing Area
- ⋈ Division Break
- ⋈ Branch Break
- Drop Point
- Camp
- Staging Area
- Lookout
- Hot Spot - Spot Fire
- Value at Risk
- Bridge
- Mobile Weather Unit
- Internet Access
- Repeater
- ▲ Safety Zone
- ▲ Hazard
- Water Source
- Road Closure
- Buildings
- Active Burnout
- ⋈ Completed Dozer Line
- ⋈ Completed Fuel Break
- ⋈ Completed Hand Line
- ⋈ Completed Mixed Construction Line
- ⋈ Completed Road as Line
- ⋈ Planned Dozer Line
- ⋈ Planned Hand Line
- ⋈ Planned Mixed Construction Line
- ⋈ Planned Road as Line
- Access or Improved Road
- Other
- Road Repair
- Contained Line
- Other
- Wildfire Daily Fire Perimeter
- Crane Mills
- Sierra Pacific Industries
- Trinity Timberlands LLC
- Non-FS Lands
- Historical Wildfires



BRANCH 40

DIV Z

Bar 717

Camp Trinity 3N20

Grassy Flat 3N21

Halfway Rd 3N22

Butter Creek 3N28 Rd

DIV W

Indian Valley

DIV RR