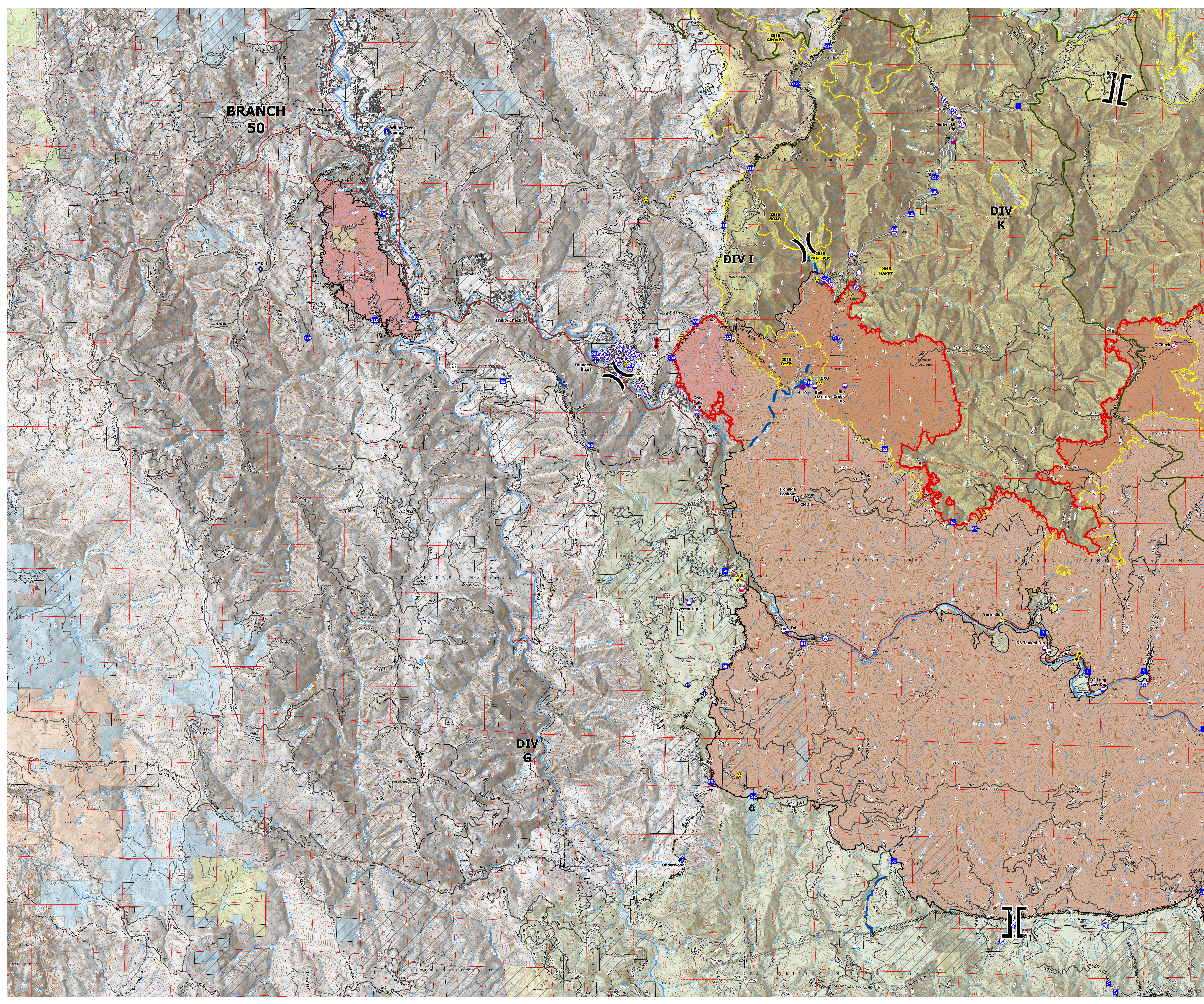


Branch 50 with IR

Monument
CA-SHF-001187
09/28/2021
223,001 acres as of
09/27 at 1600



- Check Point
- Dip Site
- Mobile Retardant Base
- Helispot
- Unimproved Landing Area
- × Division Break
- × Branch Break
- Drop Point
- Camp
- Staging Area
- Lookout
- Hot Spot - Spot Fire
- Value at Risk
- Fire Station
- Bridge
- Mobile Weather Unit
- Internet Access
- Repeater
- ▲ Safety Zone
- ▲ Hazard
- Water Source
- Restricted Water Source
- Soft Closure
- Road Closure
- Buildings
- Active Burnout
- Completed Dozer Line
- Completed Hand Line
- Completed Mixed Construction Line
- Completed Road as Line
- Planned Dozer Line
- Planned Hand Line
- Planned Road as Line
- Access or Improved Road
- Other
- Road Repair
- Fire Edge
- Contained Line
- Wildfire Daily Fire Perimeter
- National Wilderness Area
- BARNUM TIMBER COMPANY
- Crane Mills
- FGF US Forest Holdings INC
- GREEN DIAMOND RESOURCES COMPANY
- Sierra Pacific Industries
- SOPER WHEELER COMPANY
- Trinity Timberlands LLC
- Non-FS Lands
- Historical Wildfires
- IR 09/27/2021 1945 hrs
- IR Isolated Heat Source
- IR Heat Perimeter
- IR Intense Heat
- IR Scattered Heat

Disclaimer: On the IR Flight for 09/27/21 @ 1945 PDT the western half of the fire was obscured by cloud cover and no IR information is available. Current IR data for the fire runs along a N/S line beginning near DP-20 to the east. Some portions of this area were also obscured by cloud cover.

