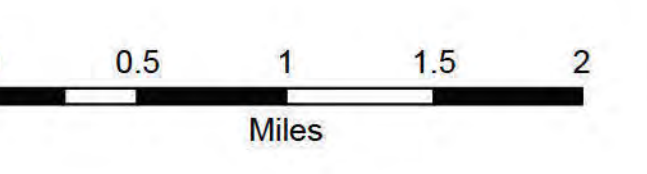


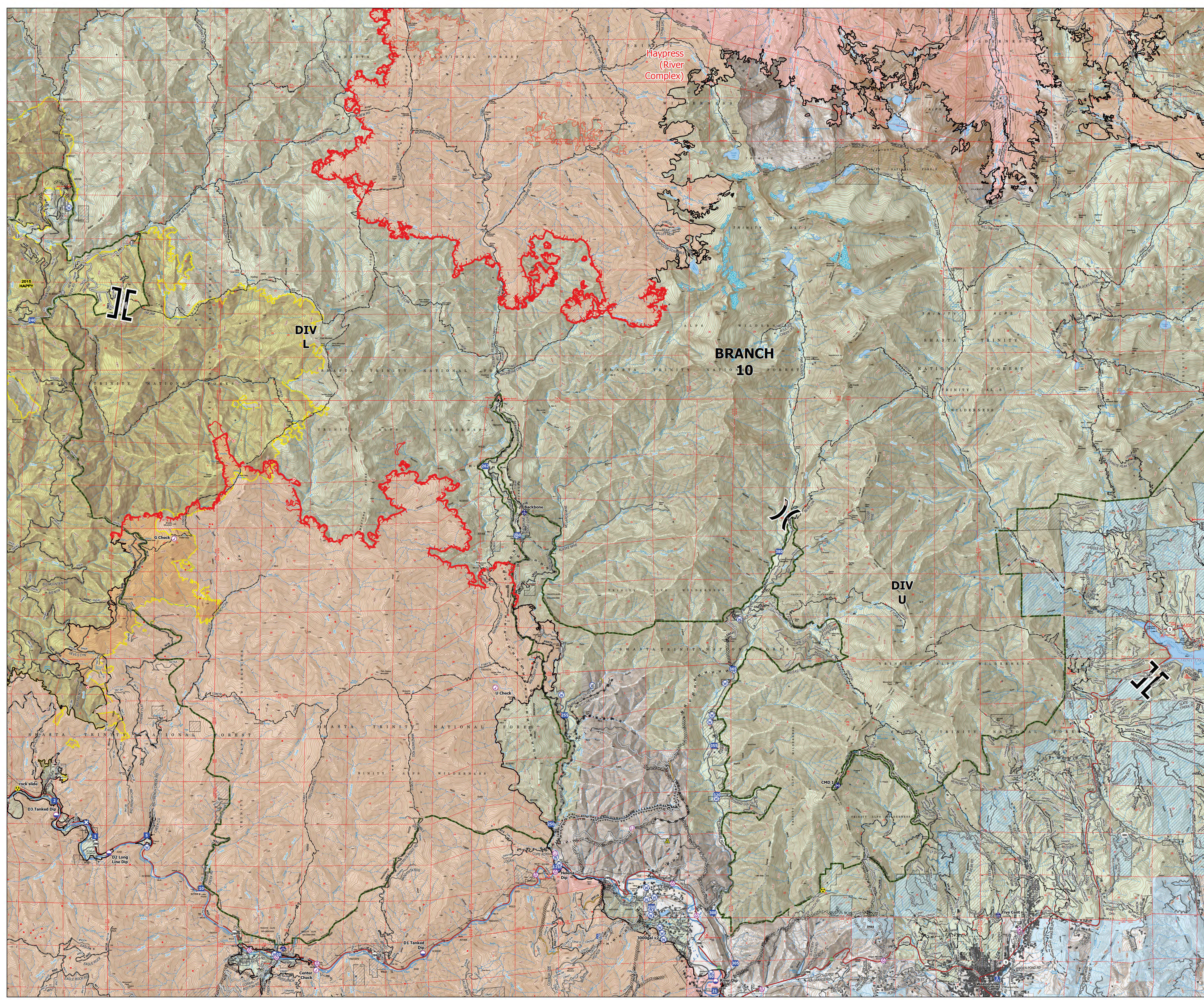
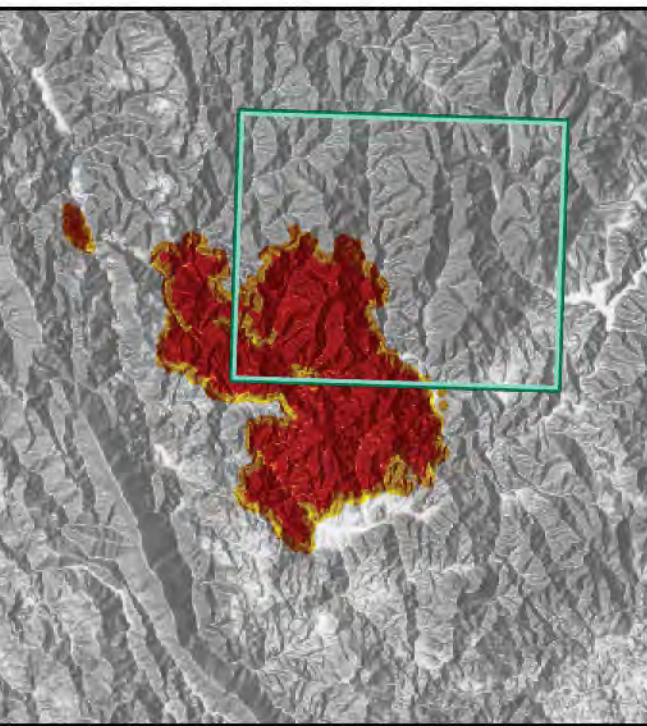
# Branch 10 with IR

Monument  
CA-SHF-001187  
10/03/2021  
223,001 acres as of  
09/27 at 1600

- IR 10/02/2021 1734 hrs
- IR Isolated Heat Source
- IR Heat Perimeter
- Aerial Hazard
- Airstrip or Airport
- Check Point
- Dip Site
- Unimproved Landing Area
- Division Break
- Branch Break
- Drop Point
- Closure
- Camp
- Staging Area
- Hot Spot - Spot Fire
- Value at Risk
- Bridge
- Mobile Weather Unit
- Repeater
- Safety Zone
- Hazard
- Water Source
- Buildings
- Completed Dozer Line
- Completed Fuel Break
- Completed Hand Line
- Completed Mixed Construction Line
- Completed Road as Line
- Planned Dozer Line
- Planned Hand Line
- Planned Road as Line
- Access or Improved Road
- Fence
- Highlighted Feature
- Road Repair
- Fire Edge
- Contained Line
- Other
- Wildfire Daily Fire Perimeter
- National Wilderness Area
- Sierra Pacific Industries
- Non-FS Lands
- Historical Wildfires



NAD 1983 UTM Zone 10N



Haypress  
(River  
Complex)

DIV  
L

BRANCH  
10

DIV  
U