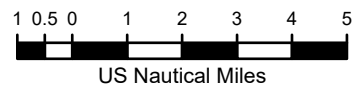


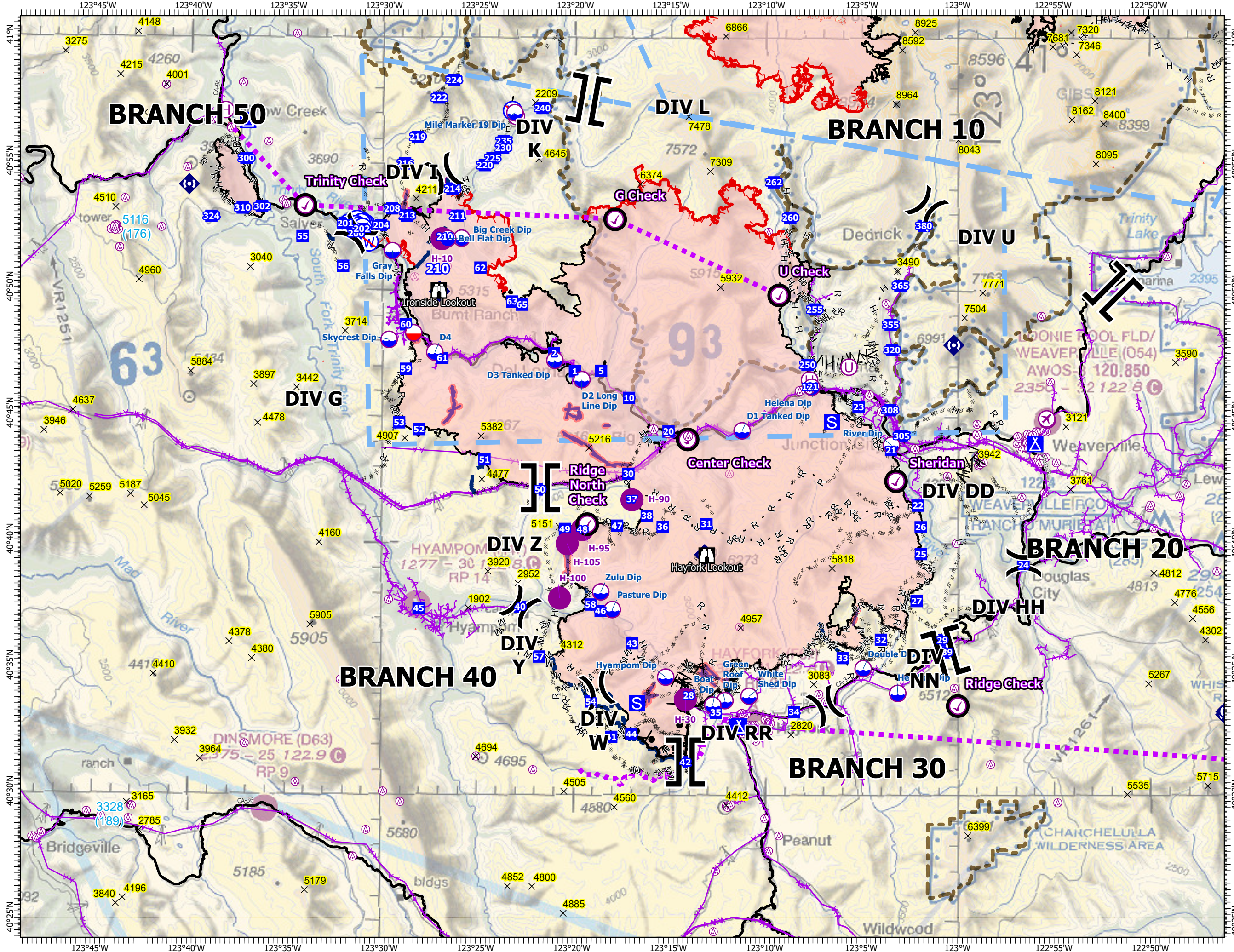
AIR OPS Pilot

Monument
CA-SHF-001187
10/03/2021

- Aerial Hazard
- Airstrip or Airport
- Check Point
- Dip Site
- Mobile Retardant Base
- Helispot
- Helibase
- Unimproved Landing Area
- Division Break
- Branch Break
- Drop Point
- Camp
- Staging Area
- Lookout
- Repeater
- Restricted Water Source
- Summit
- Active Burnout
- Completed Dozer Line
- Completed Fuel Break
- Completed Hand Line
- Completed Mixed Construction Line
- Completed Road as Line
- Access or Improved Road
- Fence
- Zone Boundary
- Repair Line
- Aerial Hazard
- Retardant Drop
- Route
- Temporary Flight Restriction
- Fire Edge
- Contained Line
- Wildfire Daily Fire Perimeter
- National Wilderness Area



1:225,000
NAD 83 UTM Zone 10 N



FC Point Type	Label	Latitude DDM	Longitude DDM	FC Point Type	Label	Latitude DDM	Longitude DDM
Drop Point		40° 44.878' N	122° 55.329' W	Drop Point	308	40° 45.269' N	123° 03.515' W
Drop Point		40° 44.925' N	122° 55.353' W	Drop Point	31	40° 40.745' N	123° 13.078' W
Camp	Hayfork Camp	40° 32.718' N	123° 11.364' W	Drop Point	310	40° 53.205' N	123° 37.346' W
Camp	Weaverville Camp	40° 43.925' N	122° 55.953' W	Drop Point	32	40° 36.167' N	123° 03.991' W
Camp	Willow Creek Camp	40° 56.684' N	123° 37.089' W	Drop Point	320	40° 47.652' N	123° 03.410' W
Dip Site	Bell Flat Dip	40° 52.027' N	123° 26.627' W	Drop Point	324	40° 52.869' N	123° 38.978' W
Dip Site	Big Creek Dip	40° 52.045' N	123° 25.899' W	Drop Point	33	40° 35.438' N	123° 05.976' W
Dip Site	Boat Dip	40° 33.565' N	123° 12.727' W	Drop Point	34	40° 33.291' N	123° 08.499' W
Dip Site	D1 Tanked Dip	40° 44.442' N	123° 11.230' W	Drop Point	35	40° 33.266' N	123° 12.571' W
Dip Site	D2 Long Line Dip	40° 46.454' N	123° 19.590' W	Drop Point	355	40° 48.650' N	123° 03.492' W
Dip Site	D3 Tanked Dip	40° 47.217' N	123° 21.004' W	Drop Point	36	40° 40.628' N	123° 15.359' W
Dip Site	D4	40° 47.520' N	123° 27.271' W	Drop Point	365	40° 50.197' N	123° 02.986' W
Dip Site	Double Dip	40° 35.020' N	123° 04.911' W	Drop Point	37	40° 41.719' N	123° 16.969' W
Dip Site	Gray Falls Dip	40° 51.533' N	123° 29.508' W	Drop Point	38	40° 41.067' N	123° 16.188' W
Dip Site	Green Roof Dip	40° 33.744' N	123° 12.094' W	Drop Point	380	40° 52.573' N	123° 01.755' W
Dip Site	Helena Dip	40° 46.175' N	123° 07.605' W	Drop Point	39	40° 35.668' N	123° 00.539' W
Dip Site	Hershey Dip	40° 34.040' N	123° 03.111' W	Drop Point	40	40° 37.436' N	123° 22.758' W
Dip Site	Hyampom Dip	40° 34.671' N	123° 15.180' W	Drop Point	41	40° 32.298' N	123° 17.997' W
Dip Site	Mille Marker 19 Dip	40° 57.027' N	123° 23.239' W	Drop Point	42	40° 31.295' N	123° 14.142' W
Dip Site	Pasture Dip	40° 37.341' N	123° 17.968' W	Drop Point	43	40° 36.005' N	123° 16.931' W
Dip Site	River Dip	40° 43.884' N	123° 03.443' W	Drop Point	44	40° 32.417' N	123° 16.952' W
Dip Site	Skycrest Dip	40° 48.017' N	123° 29.659' W	Drop Point	45	40° 37.375' N	123° 28.048' W
Dip Site	White Shed Dip	40° 33.920' N	123° 10.841' W	Drop Point	46	40° 37.283' N	123° 18.574' W
Dip Site	Zulu Dip	40° 38.040' N	123° 18.571' W	Drop Point	47	40° 40.670' N	123° 17.730' W
Drop Point	1	40° 46.789' N	123° 19.960' W	Drop Point	48	40° 40.511' N	123° 19.540' W
Drop Point	10	40° 45.740' N	123° 17.129' W	Drop Point	49	40° 40.534' N	123° 20.449' W
Drop Point	121	40° 46.194' N	123° 07.688' W	Drop Point	5	40° 46.808' N	123° 18.591' W
Drop Point	2	40° 47.502' N	123° 21.051' W	Drop Point	50	40° 42.093' N	123° 21.749' W
Drop Point	20	40° 44.407' N	123° 15.069' W	Drop Point	51	40° 43.278' N	123° 24.653' W
Drop Point	200	40° 52.215' N	123° 31.418' W	Drop Point	52	40° 44.463' N	123° 28.071' W
Drop Point	201	40° 52.612' N	123° 31.977' W	Drop Point	53	40° 44.727' N	123° 29.109' W
Drop Point	202	40° 52.394' N	123° 31.121' W	Drop Point	54	40° 33.697' N	123° 19.067' W
Drop Point	204	40° 52.631' N	123° 30.031' W	Drop Point	55	40° 52.094' N	123° 34.211' W
Drop Point	208	40° 53.212' N	123° 29.540' W	Drop Point	56	40° 50.923' N	123° 32.076' W
Drop Point	21	40° 43.686' N	123° 03.471' W	Drop Point	57	40° 35.470' N	123° 21.777' W
Drop Point	210	40° 52.100' N	123° 26.781' W	Drop Point	58	40° 37.540' N	123° 19.094' W
Drop Point	211	40° 52.932' N	123° 26.125' W	Drop Point	59	40° 46.857' N	123° 28.776' W
Drop Point	213	40° 52.928' N	123° 28.751' W	Drop Point	60	40° 48.617' N	123° 28.791' W
Drop Point	214	40° 54.011' N	123° 26.393' W	Drop Point	61	40° 47.286' N	123° 26.876' W
Drop Point	216	40° 54.994' N	123° 28.871' W	Drop Point	62	40° 50.880' N	123° 24.912' W
Drop Point	219	40° 56.055' N	123° 28.223' W	Drop Point	63	40° 49.540' N	123° 23.248' W
Drop Point	22	40° 41.487' N	123° 02.063' W	Drop Point	65	40° 49.418' N	123° 22.727' W
Drop Point	220	40° 54.942' N	123° 24.708' W	Helibase	Sky Ranch	40° 30.055' N	122° 22.669' W
Drop Point	222	40° 57.615' N	123° 27.110' W	Helibase	Willow Creek	40° 57.085' N	123° 36.257' W
Drop Point	224	40° 58.316' N	123° 26.344' W	Helispot	H-10	40° 52.020' N	123° 26.920' W
Drop Point	225	40° 55.220' N	123° 24.310' W	Helispot	H-100	40° 37.792' N	123° 20.712' W
Drop Point	23	40° 45.386' N	123° 05.163' W	Helispot	H-105	40° 39.950' N	123° 20.328' W
Drop Point	230	40° 55.628' N	123° 23.752' W	Helispot	H-30	40° 33.783' N	123° 14.154' W
Drop Point	235	40° 55.908' N	123° 23.723' W	Helispot	H-90	40° 41.698' N	123° 16.961' W
Drop Point	24	40° 39.111' N	122° 56.570' W	Helispot	H-95	40° 40.507' N	123° 19.547' W
Drop Point	240	40° 57.218' N	123° 21.703' W	Lookout	Hayfork Lookout	40° 39.492' N	123° 13.062' W
Drop Point	25	40° 39.564' N	123° 01.915' W	Lookout	Ironside Lookout	40° 49.961' N	123° 27.075' W
Drop Point	250	40° 47.058' N	123° 07.829' W	Mobile Retardant Base		40° 48.283' N	123° 28.375' W
Drop Point	255	40° 49.260' N	123° 07.466' W	Repeater	Bully Choop	40° 33.186' N	122° 46.063' W
Drop Point	26	40° 40.627' N	123° 01.925' W	Repeater	CDF CMD-11 (T-14)	40° 33.304' N	122° 46.047' W
Drop Point	260	40° 52.900' N	123° 08.737' W	Repeater	CDF CMD-2 (T-14)	40° 41.075' N	122° 45.010' W
Drop Point	262	40° 54.297' N	123° 09.597' W	Repeater	CMD 1	40° 47.844' N	123° 00.196' W
Drop Point	27	40° 37.702' N	123° 02.133' W	Repeater	CMD 2	40° 39.532' N	123° 13.164' W
Drop Point	28	40° 33.939' N	123° 13.985' W	Repeater	CMD 3	40° 33.315' N	122° 46.015' W
Drop Point	29	40° 36.152' N	123° 00.798' W	Repeater	CMD 4	40° 54.137' N	123° 40.137' W
Drop Point	30	40° 42.727' N	123° 17.152' W	Repeater	CMD 5	40° 49.935' N	123° 27.037' W
Drop Point	300	40° 55.172' N	123° 37.170' W	Unimproved Landing Area		40° 56.878' N	123° 23.067' W
Drop Point	302	40° 53.266' N	123° 36.329' W	Unimproved Landing Area		40° 46.463' N	123° 07.721' W
Drop Point	305	40° 44.249' N	123° 02.917' W	Unimproved Landing Area		40° 46.975' N	123° 05.663' W

FC Point Type	Label	Latitude DDM	Longitude DDM
Airstrip or Airport		40° 44.878' N	122° 55.329' W
Airstrip or Airport		40° 44.925' N	122° 55.353' W
Camp	Hayfork Camp	40° 32.718' N	123° 11.364' W
Camp	Weaverville Camp	40° 43.925' N	122° 55.953' W
Camp	Willow Creek Camp	40° 56.684' N	123° 37.089' W
Dip Site	Bell Flat Dip	40° 52.027' N	123° 26.627' W
Dip Site	Big Creek Dip	40° 52.045' N	123° 25.899' W
Dip Site	Boat Dip	40° 33.565' N	123° 12.727' W
Dip Site	D1 Tanked Dip	40° 44.442' N	123° 11.230' W
Dip Site	D2 Long Line Dip	40° 46.454' N	123° 19.590' W
Dip Site	D3 Tanked Dip	40° 47.217' N	123° 21.004' W
Dip Site	D4	40° 47.520' N	123° 27.271' W
Dip Site	Double Dip	40° 35.020' N	123° 04.911' W
Dip Site	Gray Falls Dip	40° 51.533' N	123° 29.508' W
Dip Site	Green Roof Dip	40° 33.744' N	123° 12.094' W
Dip Site	Helena Dip	40° 46.175' N	123° 07.605' W
Dip Site	Hershey Dip	40° 34.040' N	123° 03.111' W
Dip Site	Hyampom Dip	40° 34.671' N	123° 15.180' W
Dip Site	Mille Marker 19 Dip	40° 57.027' N	123° 23.239' W
Dip Site	Pasture Dip	40° 37.341' N	123° 17.968' W
Dip Site	River Dip	40° 43.884' N	123° 03.443' W
Dip Site	Skycrest Dip	40° 48.017' N	123° 29.659' W
Dip Site	White Shed Dip	40° 33.920' N	123° 10.841' W
Dip Site	Zulu Dip	40° 38.040' N	123° 18.571' W
Drop Point	1	40° 46.789' N	123° 19.960' W
Drop Point	10	40° 45.740' N	123° 17.129' W
Drop Point	121	40° 46.194' N	123° 07.688' W
Drop Point	2	40° 47.502' N	123° 21.051' W
Drop Point	20	40° 44.407' N	123° 15.069' W
Drop Point	200	40° 52.215' N	123° 31.418' W
Drop Point	201	40° 52.612' N	123° 31.977' W
Drop Point	202	40° 52.394' N	123° 31.121' W
Drop Point	204	40° 52.631' N	123° 30.031' W
Drop Point	208	40° 53.212' N	123° 29.540' W
Drop Point	21	40° 43.686' N	123° 03.471' W
Drop Point	210	40° 52.100' N	123° 26.781' W
Drop Point	211	40° 52.932' N	123° 26.125' W
Drop Point	213	40° 52.928' N	123° 28.751' W
Drop Point	214	40° 54.011' N	123° 26.393' W
Drop Point	216	40° 54.994' N	123° 28.871' W
Drop Point	219	40° 56.055' N	123° 28.223' W
Drop Point	22	40° 41.487' N	123° 02.063' W
Drop Point	220	40° 54.942' N	123° 24.708' W
Drop Point	222	40° 57.615' N	123° 27.110' W
Drop Point	224	40° 58.316' N	123° 26.344' W
Drop Point	225	40° 55.220' N	123° 24.310' W
Drop Point	23	40° 45.386' N	123° 05.163' W
Drop Point	230	40° 55.628' N	123° 23.752' W
Drop Point	235	40° 55.908' N	123° 23.723' W
Drop Point	24	40° 39.111' N	122° 56.570' W
Drop Point	240	40° 57.218' N	123° 21.703' W
Drop Point	25	40° 39.564' N	123° 01.915' W
Drop Point	250	40° 47.058' N	123° 07.829' W
Drop Point	255	40° 49.260' N	123° 07.466' W
Drop Point	26	40° 40.627' N	123° 01.925' W
Drop Point	260	40° 52.900' N	123° 08.737' W
Drop Point	262	40° 54.297' N	123° 09.597' W
Drop Point	27	40° 37.702' N	123° 02.133' W
Drop Point	28	40° 33.939' N	123° 13.985' W
Drop Point	29	40° 36.152' N	123° 00.798' W
Drop Point	30	40° 42.727' N	123° 17.152' W
Drop Point	300	40° 55.172' N	123° 37.170' W
Drop Point	302	40° 53.266' N	123° 36.329' W
Drop Point	305	40° 44.249' N	123° 02.917' W