

INCIDENT ACTION PLAN MONUMENT FIRE

CA-SHF-001187
P5N7GJ (0514)

Sunday



MAPS

OPERATIONAL PERIOD

8/15/2021 0700

to

8/16/2021 0700




IAP

INCIDENT OBJECTIVES (ICS 202)

1. Incident Name: <p style="text-align: center;">Monument Fire</p>	2. Operational Period:	Date From: 8/15/2021 Time From: 0700	Date To: 8/16/2021 Time To: 0700
3. Objective(s): <p>Leaders Intent:</p> <ul style="list-style-type: none"> - An aggressive full suppression strategy will be implemented for the Monument Fire. Efforts will be made to minimize impacts for residences, critical infrastructure, commercial timberland and surrounding communities through the application of well-planned tactical responses. <p>Management Objectives:</p> <ul style="list-style-type: none"> - Ensure that strategies and tactics provide for firefighter and public safety through the application of sound risk management principles. - Minimize the threat to private property, communities, businesses and critical infrastructure. - Establish and strengthen cooperator, partner and stakeholder relationships. - Follow identified standard procedures to minimize the spread of COVID-19. - Communicate effectively and often with the public and surrounding communities. - Minimize the cost of the incident by employing tactics that have the highest probability of success while minimizing firefighter exposure. <p>Control Objectives</p> <ul style="list-style-type: none"> - Keep the fire North of Highway 3 and Highway 36. - Keep the fire South of Siskiyou and Trinity County line, while preserving wilderness characteristics. - Keep the fire East of the South Fork of the Trinity River and the New River. - Keep the fire West of Canyon Creek and Trinity River. 			
4. General Situational Awareness: <ul style="list-style-type: none"> - Diurnal winds will continue to challenge suppression efforts..... see attached Spot Weather Forecast. - Be prepared for very active to extreme fire behavior with long-range spotting. - The fire is burning in the 2008 Cedar Fire footprint; be extra aware of snags and hazard trees. 			
5. Site Safety Plan Required?			
Yes	<input type="checkbox"/>	No	<input checked="" type="checkbox"/>
Approved Site Safety Plan(s) Located at:			
6. Incident Action Plan			
<input checked="" type="checkbox"/> ICS 203	<input checked="" type="checkbox"/> ICS 215A	<input checked="" type="checkbox"/> OES Message	<input checked="" type="checkbox"/> HRSP Message
<input checked="" type="checkbox"/> ICS 204	<input checked="" type="checkbox"/> ICS 220	<input checked="" type="checkbox"/> Training Message	<input checked="" type="checkbox"/> PIO Message
<input checked="" type="checkbox"/> ICS 205	<input checked="" type="checkbox"/> Facility Maps	<input type="checkbox"/> Travel Map	<input checked="" type="checkbox"/> Line Order
<input checked="" type="checkbox"/> ICS 206	<input checked="" type="checkbox"/> Weather Forecast	<input checked="" type="checkbox"/> Demob Plan	<input checked="" type="checkbox"/> COVID Screening Tool
<input checked="" type="checkbox"/> ICS 208	<input checked="" type="checkbox"/> Fire Behavior	<input checked="" type="checkbox"/> Finance Message	<input checked="" type="checkbox"/> ICS 214
7. Prepared By: Ryan Wakefield(T)		Position/Title: PSC	Signature:
8. Approved by Incident Commander:		Dustan Mueller	Signature:
ICS 202			

ORGANIZATION ASSIGNMENT LIST (ICS 203)

1. Incident Name: Monument Fire		2. Operational Period: Date From: 8/15/2021 Time From: 0700		Date To: 8/16/2021 Time To: 0700	
3. Incident Commander(s) and Command Staff:			7. Operation Section:		
IC/UC's	Dustan Mueller	Operations	Steve Burns		
Deputy	Rick Young, Carlton Joseph	Planning Operations	Alex McBath, Jesse Knox(T)		
Safety Officer	Dave Welch, Jason Winbigler	Night Ops	Don Fregulia, Ernie Villa(T)		
Information Officer	Nathan Judy	Staging Area			
Liaison Officer	Rick Alpert, Corey Rose(T)	Branch	I	Steve Clark, Mike Smith(T)	
4. Agency/Organization Representatives:		Division/Group	A	Jimmy Hidalgo, Garrett Dunn(T)	
Agency/Organization	Name	Division/Group	E	Robert Claytor, Mike Henderson(T)	
SHF Agency Administrator	Ted McArthur, Kari Otto(T)	Division/Group	G	UNSTAFFED	
		Division/Group			
SHF Agency Administrator Rep.	Tara Jones	Division/Group			
		Division/Group			
SHF District DFMO	Glen Tingley	Division/Group			
SRF Agency Rep.	Mark Deperro	Branch	X	Kim Olson	
		Division/Group	M	UNSTAFFED	
		Division/Group	U	Brian Fabbri	
		Division/Group			
BLM Agency Administrator	Molly Brown	Division/Group			
		Division/Group			
BLM Agency Rep.	Rob Winkler	Division/Group			
Trinity Co. OES	Ed Prestley	Division/Group			
Cal Trans	Michael Webb	Branch	XX	Will Harris, Matt Holmstrom(T)	
CHP	Brandon Lale	Division/Group	W	T. Richey, Stephen Clifford, Shawn Woodbury(T)	
PGE	Dave Hotchkiss				
Trinity Co. Sheriffs	Tim Saxon	Division/Group	X	Danny Breuklander	
Cal OES	Pat Titus	Division/Group	Z	Matt Radtke	
American Red Cross	Andrew Bogar	Division/Group			
CCC	Aric Anderson	Division/Group			
Lead READ	Brad Rust	Division/Group			
5. Planning Section:		Branch	NIGHT		
Chief	Jason Schillinger	Division/Group	A	Tod Flowers, Chris Allen(T)	
Deputy	Robert Ashby(T), Ryan Wakefield(T)	Division/Group	Z	Frank Alves, Angela Chongpintichai(T)	
Resource Unit	Harry Kelmanson, Marisa Williams(T), Kelly Smyth(T)	Division/Group			
		Division/Group			
Situation Unit	Tad Morelock, Francis Baker, Josh Massie(T)	Division/Group			
		Division/Group			
Status Check-In	Andrea Saltzman, Brad Paige(T), Miles Gossett(T), Jay Strand(T)	Division/Group	West Contingency	UNSTAFFED	
		Division/Group	State Contingency	Nick Ciapponi, Steve Chapman, Clint Swensen	
Documentation Unit	Johanna Ostling	Division/Group			
Demobilization Unit	Dave Loop	Division/Group			
GISS	Dawn Hutchinson	Division/Group			
FBAN	Jeff Shelton	Division/Group			
IMET	Zach Tolby	Division/Group			
Air Resource Advisor	Ali Kamal	Air Operations Branch		Director:	John Keesee
Training Tech Spec		Air Support Group Supervisor		Dave Carrera, Cole Wallace(T)	
Human Resources	Andrea Cabida, Armando Vargas(T)	Air Tactical Group Supervisor			
6. Logistics Section		Helibase Manager		Steve Hagen	
Chief	Brett Shurr, Ricky Crowther(T)				
Deputy	Jim Eckroth, Ken Kumpe	8. Finance/Administration Section:			
Supply Unit	Mike Bradford	Chief	Theresa Fork		
Base Camp Manager	Crystal Danheiser	Time Unit	Janice Brown(Redding), Maggie Prochazlco(Willow Creek)		
Facilities Unit	Damon Norvell				
Ground Support Unit	Zeb Wilcox	Procurement Unit	Katie Pasini		
Communications Unit	Ken Earle, Kevin Throop, Armando DeLaTorre, Dolly Justin-Silveira	Comp/Claims Unit	Elaine Downing(Weaverville), Susan Haggerty(Willow Creek)		
Medical Unit	Jeff Carlon, Robert Russell	Cost Unit	Roger Siemers		
Food Unit	Gary Edwards				
Prepared By: Name:	Ryan Wakefield(T)	Position/Title:	PSC	Signature:	
ICS 203		Date/Time:	8/14/2021 2300 hours		



INCIDENT Weather Forecast



FORECAST NO: 12
PREDICTION FOR: Sun 0700 to Mon 0700
SHIFT DATE: August 15, 2021
FORECAST ISSUED: 1800 PDT, August 14, 2021

NAME OF FIRE: Monument Fire
UNIT: SHF
SIGNED: Zach Tolby
 Incident Meteorologist

WEATHER DISCUSSION

Stronger Northwest Winds Sunday Afternoon through Monday

A trough moving through northern California will bring an increase in northwest winds, especially to the ridges. Expect enhanced upcanyon winds in the Trinity River Canyon this afternoon and tonight with a disruption to the typical daily wind pattern. Ridge winds will be light out of the west in the morning becoming northwest with gusts up to 30 mph in the afternoon. Winds will stay gusty from the northwest along the ridges and exposed terrain overnight tonight with stronger northwest winds expected on Monday.

SUNDAY:

WEATHER: Thick smoke, some clearing possible around Burnt Ranch by the evening.
MAX TEMPERATURES: 90-100°F
MIN HUMIDITY: 16-26%.
20 FT WINDS: Ridges: Northwest 4 to 8 mph with gusts up to 15 mph in the morning, becoming northwest 15 to 20 mph with gusts up to 30 mph in the afternoon.
 Drainages: Light winds in the morning becoming 8 to 12 mph with gusts up to 25 mph in the Glennison Gap during the late afternoon.
LAL: 1
CWR: 0%
HAINES INDEX: 5
MIXING HEIGHT: 100-400 ft AGL increasing to 8,500 ft AGL in the early afternoon.
TRANSPORT WIND: West around 15 mph.

SUNDAY NIGHT:

WEATHER: Smoke will begin to clearer along the west side of the fire.
MIN TEMPERATURES: 60-65°F
MAX HUMIDITY: Valley 60-70%. Ridges 35-45%
20 FT WINDS: Ridges: Northwest 10 to 20 mph with gusts up to 30 through the evening becoming northwest 8 to 14 mph with gusts up to 20 mph overnight.
 Drainages: West 8 to 12 mph gusting up to 25 mph in the Glennison Gap during the late afternoon becoming west 6 to 8 with gusts up to 20 mph overnight.
LAL: 1
CWR: 0%
HAINES INDEX: 4
MIXING HEIGHT: 8,500 ft AGL decreasing to 100-1000 ft AGL early in the evening.
TRANSPORT WIND: West around 10 mph.

Monday/Tuesday Outlook

Even stronger northwest winds expected for Monday as the trough passes by the region with elevated winds lasting into Tuesday. Continued northwest winds should allow smoke to mostly clear along the east side of the fire during the day

on Monday.

RAWS Observations



FIRE BEHAVIOR FORECAST

FORECAST NUMBER: 012	TYPE OF FIRE: Wildfire
FIRE NAME: Monument Fire	OPERATIONAL PERIOD: 08/15/21 0700-0700
DATE ISSUED: August 14, 2021	TIME ISSUED: 20:00
UNIT: CA-SHF-001187	SIGNED: <i>Jeff Shelton</i> Typed/printed: Jeff Shelton (LTAN)

INPUTS

WEATHER SUMMARY: ***** Stronger Northwest Winds*****
Anticipate an increase in northwest winds, with a disruption to the typical daily wind pattern. Ridge winds will start light out of the west, becoming northwest with gusts up to 30 mph by afternoon. Winds will stay gusty in exposed terrain overnight.

Day
Max. Temperatures- 90°-100° Min. Humidity-16 to 26% Winds-NW to 8 mph, up to 15 mph, **Gusting 30!**

Night
Min. Temperatures- 60°-65° Max. Humidity-35 to 70% Winds-NW 10 to 20 mph, **Ridges Gusting to 30!**

OUTPUTS

FIRE BEHAVIOR

GENERAL:

- **Expect today's NW wind to once again challenge lines towards the east of the fire!**
- With ERC's remaining above the 90th percentile..., **Resistance to Control will be Very High!**
- Slope mimics wind...**Once Fire Transitions Uphill...Even Slightly... Expect Big Changes!**
- This fire remains fuels driven...**But Ventilation Dependent...Read Your Smoke Often!**
- Strong winds expected....**Complex, Dissecting Terrain will Enhance this Erratic Effect!**
- Heavy fuels burning above, below or around you in steep terrain?...**Make a Plan for Rollout!!**
- Topography is creating locally higher winds...**This Fire is Especially Sensitive to Wind!**
- Reliably at 1700...**Winds and Fire Behavior Increase...Upslope to Up Drainage!**

SPECIFIC:

All Divisions: *****Expect Fine Fuel Availability to Swing Largely Throughout the Day!*****

Flame Lengths- 4 to 6 ft. in Grass, Up to 20 ft. in Brush...Diminishing after midnight

Rate of Spread- 20 chains/hour in Grass, Up to 40 chains/hour in Brush... Diminishing overnight

Spotting Distances- Up to .25 miles from Grass/Brush, Up to 1 mile in Timber (From Torching)

Probability of Ignition- Up to 80% at the peak of the burn period, Diminishing to <30% overnight

AIR OPERATIONS: **Sunrise: 06:20 Sunset: 20:09**

Expect poor smoke dispersion before the inversion breaks by late in the morning. Mixing heights start out at less than 1000 feet; rise to 8,500 feet with daytime heating; then return to less than 1000 feet after sunset. Anticipate terrain induced turbulence in the Trinity River corridor, especially during peak hours of afternoon heating..... **Strong Northwest Flow at Altitude!**

SAFETY

Today's Fire Environment is Unforgiving of Lack of Planning!

Brief Your Plan, and the Backup Plan...and a Backup to Your Backup

Identify, Respect and Continually Update Fire Behavior Trigger Points!

Monument Incident– Safety Message

INCIDENT #CA-SHF-001187

DATE:8/15-8/16/2021TIME:0700–0700 Day/Night

Firefighter Fatigue/Driver Safety

With continued physically demanding operational periods, expect and predict fatigue of all crew members working in and around your division. Take the following steps to limit and address fatigue and driver safety:

1. Follow work/rest guidelines.
2. Take breaks as needed.
3. Rotate qualified drivers/operators.
4. Supervisors assess the fatigue levels of your crews during operational periods.
5. Ask/tell if you are physically unable to complete a task or assignment.
6. Front seat passengers should remain awake and maintain situational awareness while driving.

Heat Related Illness

Heat Stroke- A condition that occurs when the body becomes unable to control its temperature, and can cause death or permanent disability. Description of signs and symptoms include:

- Confusion, loss of coordination.
- Throbbing headaches.
- High body temperature.
- Seizures, coma.

Heat Exhaustion- The body's response to an excessive loss of water and salt, usually through sweating.

- Heavy sweating, extreme weakness or fatigue.
- Dizziness, nausea, vomiting, irritability.
- Fast, shallow breathing.
- Trouble concentrating, loss in coordination.

Heat Cramps- Affects workers who sweat a lot during strenuous activity. Sweating depletes the body's salt and moisture levels.

- Muscle cramps, pain, or spasms in the abdomen, arms or legs.

Personal Hygiene and Illness Prevention

With shared utilities such as sleeping quarters, restrooms and the chow hall, the chance of spreading illness and infection is a concern. Take the following steps to limit your exposure to illness or infection:

- Use handwashing stations routinely.
- Stay hydrated and well nourished.
- Get your rest, use hand sanitizer.
- Avoid contact with social surfaces (handrails, doorknobs) without washing hands after.
- Follow all CDC and Agency COVID 19 protocols.



12.CANNOT SEE MAIN FIRE, NOT IN CONTACT WITH ANYONE WHO CAN

Safety Officers: Dave Welch (SOF1)

Jason Winbigler (SOF1)



ASSIGNMENT LIST (ICS 204 WF)

CONTROLLED UNCLASSIFIED
INFORMATION//BASIC

1. Incident Name: <p style="text-align: center;">Monument Fire</p>	2. Operational Period: Date From: 08/15/21 Date To: 08/16/21 Time From: 0700 Time To: 0700	3. Branch Division <p style="text-align: center;">I A</p>
---	---	---

4. Operations Personnel:		Page 1 of 3 Alpha
Operations Section Chief: Steve Burns	Night Ops: Don Fregulia, Ernie Villa(T)	
Branch Director: Steve Clark, Mike Smith(T)	Branch Safety:	
Division/Group Supervisor: Jimmy Hidalgo, Garrett Dunn(T)	Air Attack:	

** Resources Below in Bold are 12 Hour **							
5. Resources Assigned:	ALS	LWD	Leader	Personnel	Request #	Hours	Reporting Location
HC1 VENTANA IHC		8/26	HAROLD COOK	19	C-35	0700-1900	Willow Creek Camp
HC2IA BRECKENRIDGE		8/21	COREY CORREA	18	C-14	0700-1900	Willow Creek Camp
HC2 HELITAC 520			BORT VALDEZ	8	A-68.1	0700-1900	Willow Creek Camp
ENG T/F XTU 5176		8/22	DAVID ROSSMAN	17	E-38	0700-0700	Willow Creek Camp
ENG2 HBV 4123		8/25	BRUCE MILLERBIS	3	E-397	0700-1900	Willow Creek Camp
ENG3 SWR 8430		8/19	JOSE PALACIOS	5	E-83	0700-1900	Willow Creek Camp
ENG3 SQF 323		8/27	JUAN ANDRADE	5	E-409	0700-1900	Willow Creek Camp
ENG6 PVT STARKCORP 318		8/26	STETZEN STAKER	3	E-318	0700-1900	Willow Creek Camp
ENG6 PVT J3 CONTRACTING 177		8/16	ANTHONY PAVLIC	3	E-177	0700-1900	Willow Creek Camp
SRF E-332			SUSAN MCCULLUCH	7	E-467	0700-1900	Willow Creek Camp
SRF E-333			NORMAN GOODWIN	6	E-468	0700-1900	Willow Creek Camp
SRF PT 32			JASON NICHAS	1	E-470	0700-1900	Willow Creek Camp
DO22 LPF 3		8/25	SEAN KENNEY	4	E-19	0700-1900	Willow Creek Camp
DO22 LPF 4		8/25	GILBERT ROSALES	2	E-20	0700-1900	Willow Creek Camp
DO22 PVT NORTHSTATE 14		8/15	GEORGE POE	1	E-14	0700-1900	Willow Creek Camp
DO22 PVT BUD GARMAN 25		8/15	COLTER KING	2	E-25	0700-1900	Willow Creek Camp
DO23 PVT NORTHWESTERN FS 26		8/14	MIKE SALTERS	2	E-26	0700-1900	Willow Creek Camp
DO23 PVT 49 CREEK 226		8/26	LANCE LINKER	2	E-226	0700-1900	Willow Creek Camp

6. Work Assignments:

- Provide structure defense for the communities of Burnt Ranch, Friedrich Road, Cedar Flat and Underwood Mountain.
- Patrol and mop-up previous firing operations from Highway 299 to DP 59.
- Conduct firing operations from DP 59 south to the intersection of the 60 Road and the 47 Road.
- Continue to prepare Underwood Mountain Road, the 60 Road, and indirect handline/dozer line from DP 52 south to DP 50.
- Continue firing operations from N28A Spur west to the 60 Road.
- Defend structures along Corral Bottom Road/47 Road, and Progeny Site in south half of Section 19.
- Monitor fire on the north side of the Trinity River and south of Ironsides Lookout. If the fire spots to the south side of the Trinity River, notify PG&E immediately.

7. Special Instructions:

- Store equipment at Drop Points. Secure all equipment to prevent theft.
- GPS all pump locations and turn in to Division.
- Backhaul all trash to appropriate disposal site.
- Document any area that may have hazmat or unknown chemicals.
- Red and black candy striped flagging identifies known Arch sites. Please avoid entering these areas and direct equipment around the perimeter.

*** MEDICAL RESPONSE: RA-763 AT DP 121/HELENA (24HRS) AND ARCATA 4 AT WILLOW CAMP (DAY) ***

IF AN ASSIGNED RADIO COMMAND CHANNEL DOES NOT WORK, TRY AN ALTERNATE COMMAND CHANNEL

8. Communications							
Name	Ch	Function	Rx Freq	Rx Tone	Tx Freq	Tx Tone	Notes
CMD2 HB	2	COMMAND	171.53750N	T10 - 107.2	164.86250N	T10 - 107.2	Command Net Hayfork Bally
TAC-1	6	TACTICAL	168.05000N	T10 - 107.2	168.05000N	T10 - 107.2	DIV A Day and Night
A/G TAC	13	A/G TAC	171.03750N		171.03750N		Incident Air to Ground Tactical
CALCORD	15	MEDICAL	156.0750N	T6 -156.7	156.0750N	T6 - 156.7	
GUARD 13	16	AIR GUARD	168.62500N		168.62500N	T1 - 110.9	

9. Prepared by: Name: Harry Kelmanson, Marisa Williams(T), Kelly Smyth(T) RESL

Signature:

ICS 204 Date/Time: 8/14/2021 2200 Personnel Count: 108

ASSIGNMENT LIST (ICS 204 WF)

CONTROLLED UNCLASSIFIED
INFORMATION//BASIC

1. Incident Name: <p style="text-align: center; font-weight: bold;">Monument Fire</p>		2. Operational Period: Date From: 08/15/21 Date To: 08/16/21 Time From: 0700 Time To: 0700				3. Branch <p style="text-align: center; font-size: 2em; font-weight: bold;">I A</p>		Division <p style="text-align: center; font-size: 2em; font-weight: bold;">Alpha</p>										
4. Operations Personnel:						Page 2 of 3		Alpha										
Operations Section Chief: Steve Burns				Night Ops: Don Fregulia, Ernie Villa(T)		Branch Director: Steve Clark, Mike Smith(T)		Branch Safety:										
Division/Group Supervisor: Jimmy Hidalgo, Garrett Dunn(T)				Air Attack:														
** Resources Below in Bold are 12 Hour **																		
5. Resources Assigned:																		
Resource Identifier	ALS	LWD	Leader	Personnel	Request #	Hours	Reporting Location											
DOZ2 PVT SPRATT 436		8/26	ERIC SPRATT	2	E-436	0700-1900	Willow Creek Camp											
WTS1 PVT MONTROSE HELLFIGHTERS 74		8/24	JOHN BUCKLAND	1	E-74	0700-1900	Willow Creek Camp											
WTS1 PVT ASPLIN ENTERPRISE 75		8/24	ADAM WEINSTEIN	1	E-75	0700-1900	Willow Creek Camp											
WTT2 SANTAQUIN FIRE 141		8/23	NICK CUMMINGS	2	E-155	0700-0700	Willow Creek Camp											
WTS2 MOAPA VALLEY 72		8/23	TIM DE BERARDINIS	2	E-156	0700-0700	Willow Creek Camp											
WTS2 PVT MAD MACKS 157		8/24	RICK HANKINS	1	E-157	0700-1900	Willow Creek Camp											
WTS2 CONCHO 230		8/25	ALAN SCHULTZ	2	E-230	0700-1900	Willow Creek Camp											
WTT2 HAWKINS BAR 384		8/25	TODD WRIGHT	2	E-384	0700-1900	Willow Creek Camp											
SRF WT-235			KEITH STALKER	2	E-469	0700-1900	Willow Creek Camp											
FALM RIDGELINE		8/19	GABRIEL SOTELA	2	O-154	0700-1900	Willow Creek Camp											
MAST2 PVT DAVIS 15		8/19	CHASE NUGGENT	3	E-15	0700-1900	Willow Creek Camp											
PUMPZILLA 1 DAY		8/18	ABEL PINI	2	S-19	0700-0700	Willow Creek Camp											
TFLD PATTERSON		8/22	STEVEN PATTERSON	1	O-268	0700-1900	Willow Creek Camp											
TFLD(T) KELLY		8/22	SHANE KELLY	1	O-339	0700-1900	Willow Creek Camp											
HEQB CORDTZ		8/17	ERIK CORDTZ	1	O-262	0700-1900	Willow Creek Camp											
HEQB BEERY		8/25	CHRISTOPHER BEERY	1	O-377	0700-1900	Willow Creek Camp											
HEQB SNYDER		8/25	ANDREW SNYDER	1	O-410	0700-1900	Willow Creek Camp											
HEQB(T) LONG		8/25	RYAN LONG	1	O-378	0700-1900	Willow Creek Camp											
6. Work Assignments:																		
<ul style="list-style-type: none"> - Provide structure defense for the communities of Burnt Ranch, Friedrich Road, Cedar Flat and Underwood Mountain. - Patrol and mop-up previous firing operations from Highway 299 to DP 59. - Conduct firing operations from DP 59 south to the intersection of the 60 Road and the 47 Road. - Continue to prepare Underwood Mountain Road, the 60 Road, and indirect handline/dozer line from DP 52 south to DP 50. - Continue firing operations from N28A Spur west to the 60 Road. - Defend structures along Corral Bottom Road/47 Road, and Progeny Site in south half of Section 19. - Monitor fire on the north side of the Trinity River and south of Ironsides Lookout. If the fire spots to the south side of the Trinity River, notify PG&E immediately. 																		
7. Special Instructions:																		
<ul style="list-style-type: none"> - Store equipment at Drop Points. Secure all equipment to prevent theft. - GPS all pump locations and turn in to Division. - Backhaul all trash to appropriate disposal site. - Document any area that may have hazmat or unknown chemicals. - Red and black candy striped flagging identifies known Arch sites. Please avoid entering these areas and direct equipment around the perimeter. 																		
*** MEDICAL RESPONSE: RA-763 AT DP 121/HELENA (24HRS) AND ARCATA 4 AT WILLOW CAMP (DAY) ***																		
IF AN ASSIGNED RADIO COMMAND CHANNEL DOES NOT WORK, TRY AN ALTERNATE COMMAND CHANNEL																		
8. Communications																		
Name	Ch	Function	Rx Freq	Rx Tone	Tx Freq	Tx Tone	Notes											
CMD2 HB	2	COMMAND	171.53750N	T10 - 107.2	164.86250N	T10 - 107.2	Command Net Hayfork Bally											
TAC-1	6	TACTICAL	168.05000N	T10 - 107.2	168.05000N	T10 - 107.2	DIV A Day and Night											
A/G TAC	13	A/G TAC	171.03750N		171.03750N		Incident Air to Ground Tactical											
CALCORD	15	MEDICAL	156.0750N	T6 -156.7	156.0750N	T6 - 156.7												
GUARD 13	16	AIR GUARD	168.62500N		168.62500N	T1 - 110.9												
9. Prepared by: Name:																		
Harry Kelmanson, Marisa Williams(T), Kelly Smyth(T)				RESL		Signature:												
<table style="width: 100%; border: none;"> <tr> <td style="border: 1px solid black; width: 150px; height: 20px;">ICS 204</td> <td style="width: 300px;"></td> <td style="width: 150px;">Date/Time: 8/14/2021 2200</td> <td style="width: 150px;"></td> <td style="width: 150px;"></td> <td style="width: 150px;"></td> <td style="width: 150px;"></td> <td style="width: 150px;"></td> <td style="width: 150px;">Personnel Count: 28</td> </tr> </table>										ICS 204		Date/Time: 8/14/2021 2200						Personnel Count: 28
ICS 204		Date/Time: 8/14/2021 2200						Personnel Count: 28										

ASSIGNMENT LIST (ICS 204 WF)

CONTROLLED UNCLASSIFIED
INFORMATION//BASIC

1. Incident Name: <p style="text-align: center;">Monument Fire</p>	2. Operational Period: Date From: 08/15/21 Date To: 08/16/21 Time From: 0700 Time To: 0700	3. Branch Division <p style="text-align: center;">I E</p> <p style="text-align: center;">Page 1 of 1 Echo</p>
---	---	--

4. Operations Personnel:	
Operations Section Chief: Steve Burns	Night Ops: Don Fregulia, Ernie Villa(T)
Branch Director: Steve Clark, Mike Smith(T)	Branch Safety:
Division/Group Supervisor: Robert Claytor, Mike Henderson(T)	Air Attack:

5. Resources Assigned:	** Resources Below in Bold are 12 Hour **						
Resource Identifier	ALS	LWD	Leader	Personnel	Request #	Hours	Reporting Location
ENG3 ENF 353		8/15	PHAONG CAI	5	E-5	0700-1900	Weaverville Camp
ENG3 BNP 74		8/19	TIMOTHY SIMPSON	5	E-84	0700-1900	Weaverville Camp
ENG3 SHF 331		8/15	BRIAN CARMAN	5	E-383	0700-1900	Weaverville Camp
ENG5 PVT MONTROSE HELL FIGHTERS 174	X	8/20	DIEGO ALVAREZ	3	E-174	0700-1900	Weaverville Camp
ENG6 CTF 651		8/14	ADAM JAMES	3	E-6	0700-1900	Weaverville Camp
ENG6 MNDNR 6192		8/18	BLAKE KENNEDY	4	E-126	0700-1900	Weaverville Camp
ENG6 PVT MT ADAMS 622		8/15	ERIC RANDOPH	3	E-175	0700-1900	Weaverville Camp
WTS2 PVT CATTLE LACK RANCH 21		8/22	EUGENE GRAHAM	2	E-21	0700-0700	Weaverville Camp
FALM TIMBERWOLF		8/19	ROCKY SULLIVAN	1	O-83	0700-1900	Weaverville Camp
SKGN PVT SOFT TRACK ATTACK 51		8/19	JESSE STARK	1	E-51	0700-1900	Weaverville Camp
REMS 1 DAY		8/24	KOEBY BENNETT	4	O-93	0700-1900	Weaverville Camp

6. Work Assignments:

- Patrol and secure fireline around structures within the communities of Don Juan Point east through Big Flat along the Highway 299 corridor.
- Continue to keep Ironsides Mountain Lookout Road open from Ironsides Lookout to Highway 299.
- Monitor the west side of the New River drainage for any spot fires.

7. Special Instructions:

- Store equipment at Drop Points. Secure all equipment to prevent theft.
- GPS all pump locations and turn in to Division.
- Backhaul all trash to appropriate disposal site.
- Document any area that may have hazmat or unknown chemicals.
- Red and black candy striped flagging identifies known Arch sites. Please avoid entering these areas and direct equipment around the perimeter.

*** MEDICAL RESPONSE: RA-763 AT DP 121/HELENA (24HRS) AND ARCATA 4 AT WILLOW CAMP (DAY) ***
 IF AN ASSIGNED RADIO COMMAND CHANNEL DOES NOT WORK, TRY AN ALTERNATE COMMAND CHANNEL

8. Communications							
Name	Ch	Function	Rx Freq	Rx Tone	Tx Freq	Tx Tone	Notes
CMD2 HB	2	COMMAND	171.53750N	T10 - 107.2	164.86250N	T10 - 107.2	Command Net Hayfork Bally
TAC-2	7	TACTICAL	168.60000N	T10 - 107.2	168.60000N	T10 - 107.2	
A/G TAC	13	A/G TAC	171.03750N		171.03750N		Incident Air to Ground Tactical
CALCORD	15	MEDICAL	156.0750N	T6 -156.7	156.0750N	T6 - 156.7	
GUARD 13	16	AIR GUARD	168.62500N		168.62500N	T1 - 110.9	

9. Prepared by: Name:	Harry Kelmanson, Marisa Williams(T), Kelly Smyth(T)	RESL	Signature:
ICS 204	Date/Time: 8/14/2021	2200	Personnel Count: 36

ASSIGNMENT LIST (ICS 204 WF)

CONTROLLED UNCLASSIFIED
INFORMATION//BASIC

1. Incident Name: <p style="text-align: center; font-weight: bold;">Monument Fire</p>	2. Operational Period: Date From: 08/15/21 Date To: 08/16/21 Time From: 0700 Time To: 0700	3. Branch Division <p style="text-align: center; font-size: 2em; font-weight: bold;">X U</p> <p style="text-align: center;">Page 1 of 1 Uniform</p>
---	---	--

4. Operations Personnel:	
Operations Section Chief: Steve Burns	Night Ops: Don Fregulia, Ernie Villa(T)
Branch Director: Kim Olson	Branch Safety:
Division/Group Supervisor: Brian Fabbri	Air Attack:

5. Resources Assigned:	** Resources Below in Bold are 12 Hour **							
Resource Identifier	ALS	LWD	Leader	Personnel	Request #	Hours	Reporting Location	
HC2IA PVT FIRESTORM 15A		8/18	BEN PAVAN	20	C-5	0700-1900	Weaverville Camp	
ENG3 S/T OES XLFC 1341C		8/19	JEFF OHS	18	E-172	0700-0700	Weaverville Camp	
ENG TF XIM 6110		8/25	ALEX SILVA	21	E-224	0700-0700	Weaverville Camp	
ENG3 JUNCTION CITY 2531		8/19	JUSTIN KERWICK	4	E-44	0700-1900	Weaverville Camp	
ENG3 JUNCTION CITY 2533			JAMES DASON		E-381	0700-1900	Weaverville Camp	
WTS2 PVT FORTNER EXCAVATION 24		8/28	KEN ELLIOT	1	E-24	0700-1900	Weaverville Camp	
WTT1 ROCK CREEK		8/19	GREG VAWSER	2	E-80	0700-0700	Weaverville Camp	
FALM VOLCANO CREEK		8/18	JEFF TURPIN	2	O-84	0700-1900	Weaverville Camp	
FALM PVT REDWOOD EMPIRE		8/18	JESSE GONZALEZ	2	O-86	0700-1900	Weaverville Camp	
MAST PVT NORTHSTATE 463		8/27	KAYLEY WHEELER	2	E-463	0700-1900	Weaverville Camp	
GRD PVT LET ER BUCK 217		8/21	STEVE LASSEN	2	E-217	0700-1900	Weaverville Camp	
SKGN2 PVT LET-ER BUCK 385		8/25	DAREN WARD	2	E-385	0700-1900	Weaverville Camp	
PUMPZILLA 2 TRINITY DAY		8/19	WALT MALGINNISS	2	S-21	0700-0700	Weaverville Camp	
FALB MABERY		8/18	BROOKS MABERY	1	O-90	0700-1900	Weaverville Camp	
TFLD ROSS		8/20	GREG ROSS	1	O-111	0700-1900	Weaverville Camp	
REMS 1 DAY		8/24	KOEBY BENNETT	4	O-93	0700-1900	Weaverville Camp	

6. Work Assignments:

- Provide structure defense for the communities from Helena east through Junction City and north along Canyon Creek and the East Fork of the North Fork River.
- Finish handline from Canyon Creek west to indirect dozer line along ridges around Helena to keep fire from spreading into Canyon Creek and Junction City.
- Continue to prep structures in Canyon Creek.

7. Special Instructions:

- Store equipment at Drop Points. Secure all equipment to prevent theft.
- GPS all pump locations and turn in to Division.
- Backhaul all trash to appropriate disposal site.
- Document any area that may have hazmat or unknown chemicals.
- Red and black candy striped flagging identifies known Arch sites. Please avoid entering these areas and direct equipment around the perimeter.

*** MEDICAL RESPONSE: RA-763 AT DP 121/HELENA (24HRS) AND ARCATA 4 AT WILLOW CAMP (DAY) ***

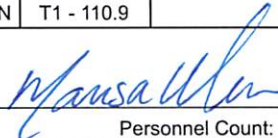
IF AN ASSIGNED RADIO COMMAND CHANNEL DOES NOT WORK, TRY AN ALTERNATE COMMAND CHANNEL

8. Communications							
Name	Ch	Function	Rx Freq	Rx Tone	Tx Freq	Tx Tone	Notes
CMD1 WB	1	COMMAND	173.81250N	T10 - 107.2	168.47500N	T10 - 107.2	Command Net Weaver Bally
TAC-2	7	TACTICAL	168.60000N	T10 - 107.2	168.60000N	T10 - 107.2	
A/G TAC	13	A/G TAC	171.03750N		171.03750N		Incident Air to Ground Tactical
CALCORD	15	MEDICAL	156.0750N	T6 -156.7	156.0750N	T6 - 156.7	
GUARD 13	16	AIR GUARD	168.62500N		168.62500N	T1 - 110.9	

9. Prepared by: Name:	Harry Kelmanson, Marisa Williams(T), Kelly Smyth(T)	RESL	Signature:
ICS 204	Date/Time: 8/14/2021 2200	Personnel Count: 84	

ASSIGNMENT LIST (ICS 204 WF)

CONTROLLED UNCLASSIFIED
INFORMATION//BASIC

1. Incident Name: Monument Fire		2. Operational Period: Date From: 08/15/21 Date To: 08/16/21 Time From: 0700 Time To: 0700			3. Branch Division XX W Page 1 of 2 Whiskey		
4. Operations Personnel:					Night Ops: Don Fregulia, Ernie Villa(T)		
Operations Section Chief: Steve Burns				Branch Safety:			
Branch Director: Will Harris, Matt Holmstrom(T)				Air Attack:			
Division/Group Supervisor: T. Richey, Stephen Clifford, Shawn Woodbury(T)							
5. Resources Assigned:		** Resources Below in Bold are 12 Hour **					
Resource Identifier	ALS	LWD	Leader	Personnel	Request #	Hours	Reporting Location
HC1 SMITH RIVER IHC		8/21	DOUGLAS DENLINGER	21	C-16	0700-1900	Weaverville Camp
HC1 REDDING IHC		8/20	DAN MALLIA	20	C-40	0700-1900	Weaverville Camp
HC2IA RED HAWK		8/24	DRAKE AROS	19	C-21	0700-1900	Weaverville Camp
ENG1 S/T OES 4804A		8/27	JEFF TAYLOR	21	E-40	0700-0700	Weaverville Camp
ENG3 AZ-KNF 32		8/27	JACCIE MAJORS	6	E-415	0700-1900	Weaverville Camp
DOZ1 PVT R BROWN CONST. 170		8/21	GARY HARRIS	2	E-170	0700-1900	Weaverville Camp
DOZ2 INF 3		8/15	CARSON SMITH	2	E-10	0700-1900	Weaverville Camp
DOZ2 PVT BENS TRUCK & EQUIPMENT		8/21	BILL SCARBROUGH	2	E-13	0700-1900	Weaverville Camp
DOZ2 PVT R BROWN CONST. 171		8/21	JAROD FULLERTON	2	E-171	0700-1900	Weaverville Camp
DOZ3 PVT JOE AND ROCKY		8/20	JOE RIGNEY	2	E-169	0700-1900	Weaverville Camp
WTT1 PONDEROSA FIRE		8/20	TYLER PACKER	2	E-78	0700-1900	Weaverville Camp
WTS1 PVT NORTHSTATE 321		8/22	DANIEL BROSS	1	E-71	0700-1900	Weaverville Camp
FALM UNDERDOG TIMBER 156		8/23	EUGENE CASTRO	2	O-156	0700-1900	Weaverville Camp
FALM CHARLIE FALLERS		8/19	TACOMA MANUEL	2	O-155	0700-1900	Weaverville Camp
MAST PVT KIT CONTRACTING		8/17	IKE TOMLINSON	2	E-31	0700-1900	Weaverville Camp
MAST PVT EVANS RIGHT OF 32		8/15	TEO GONZALES	1	E-32	0700-1900	Weaverville Camp
MAST PVT EVANS RIGHT OF 33		8/16	ROBERT TAYLOR	1	E-33	0700-1900	Weaverville Camp
MAST PVT EVANS RIGHT OF 34		8/23	CHUCK LAYTON	1	E-34	0700-1900	Weaverville Camp
6. Work Assignments:							
<ul style="list-style-type: none"> - Hold, patrol and mop-up fire line from the Trinity River south to Hocker Meadow. - Complete contingency lines along Dutch Creek Road to the Division W/X break. - Prep and secure all structures west of Dutch Creek Road. - Continue firing operations along the 3N48 Road south to the 3N51 Road and north to Rattlesnake Ridge to keep the fire west of Dutch Creek Road. - Complete and prepare dozer lines along the ridge system from the 3N48 Road east to Dutch Creek Road. - Continue the dozer line from Dutch Creek Road west to 3N08 Soldier Creek Road and from Dutch Creek Road west to 3N84 Road on the east side of Maple Creek. 							
7. Special Instructions:							
<ul style="list-style-type: none"> - Store equipment at Drop Points. Secure all equipment to prevent theft. - GPS all pump locations and turn in to Division. - Remove any equipment not required for holding operations. - Backhaul all trash to appropriate disposal site. - Document any area that may have hazmat or unknown chemicals. - Red and black candy striped flagging identifies known Arch sites. Please avoid entering these areas and direct equipment around the perimeter. 							
*** MEDICAL RESPONSE: RA-763 AT DP 121/HELENA (24HRS) AND ARCATA 4 AT WILLOW CAMP (DAY) ***							
IF AN ASSIGNED RADIO COMMAND CHANNEL DOES NOT WORK, TRY AN ALTERNATE COMMAND CHANNEL							
8. Communications							
Name	Ch	Function	Rx Freq	Rx Tone	Tx Freq	Tx Tone	Notes
CMD2 HB	2	COMMAND	171.53750N	T10 - 107.2	164.86250N	T10 - 107.2	Command Net Hayfork Bally
TAC-4	9	TACTICAL	166.77500N	T10 - 107.2	166.77500N	T10 - 107.2	
A/G TAC	13	A/G TAC	171.03750N		171.03750N		Incident Air to Ground Tactical
CALCORD	15	MEDICAL	156.0750N	T6 -156.7	156.0750N	T6 - 156.7	
GUARD 13	16	AIR GUARD	168.62500N		168.62500N	T1 - 110.9	
9. Prepared by: Name:		Harry Kelmanson, Marisa Williams(T), Kelly Smyth(T)			RESL		
					Signature: 		Personnel Count: 109
ICS 204		Date/Time: 8/14/2021 2200					

ASSIGNMENT LIST (ICS 204 WF)

CONTROLLED UNCLASSIFIED
INFORMATION/BASIC

1. Incident Name: <p style="text-align: center;">Monument Fire</p>	2. Operational Period: Date From: 08/15/21 Date To: 08/16/21 Time From: 0700 Time To: 0700	3. Branch Division <p style="text-align: center;">XX Z</p> Page 1 of 1 Zulu
---	---	--

4. Operations Personnel:	
Operations Section Chief: Steve Burns Branch Director: Will Harris, Matt Holmstrom(T) Division/Group Supervisor: Matt Radtke	Night Ops: Don Fregulia, Ernie Villa(T) Branch Safety: Air Attack:

5. Resources Assigned:	** Resources Below in Bold are 12 Hour **						
Resource Identifier	ALS	LWD	Leader	Personnel	Request #	Hours	Reporting Location
HC2IA PVT GFP 15C		8/15	JASON CAMPBELL	20	C-7	0700-1900	Weaverville Camp
ENG3 TNF 334		8/20	JEREMY OSTER	5	E-434	0700-1900	Weaverville Camp
ENG3 LPF 335		8/27	JUSTIN MAHAFFEY	5	E-408	0700-1900	Weaverville Camp
ENG3 LPF 343		8/27	NICHOLAS RILEY	5	E-407	0700-1900	Weaverville Camp
ENG6 PVT LOOMIS FIRE 46		8/19	PAUL HUDDLESTUN	3	E-180	0700-1900	Weaverville Camp
DOZ3 PVT BRAD INGRAM CONST. 168		8/20	MIKE UNDERHILL	2	E-168	0700-0700	Weaverville Camp
WTS1 PVT NORTHSTATE 72		8/25	AARON HARVEY	1	E-72	0700-1900	Weaverville Camp
WTS2 PVT FORTNER EXCAVATION 23		8/20	BOB FORTNER	1	E-23	0700-1900	Weaverville Camp
SKGN PVT SOFT TRACK ATTACK 50		8/17	JEREMY NELSON	1	E-50	0700-1900	Weaverville Camp
FALB ALLEN		8/20	DAKOTA ALLEN	1	O-117	0700-1900	Weaverville Camp
TFLD BRANDT		8/26	JOEL BRANDT	1	O-407	0700-1900	Weaverville Camp
TFLD(T) BURRIS		8/23	CLYDE BURRIS	1	O-269	0700-1900	Weaverville Camp
REMS 1 DAY		8/24	KOEBY BENNETT	4	O-93	0700-1900	Weaverville Camp
SOFR HARKER		8/28	DANIEL HARKER	1	O-469	0700-1900	Weaverville Camp

6. Work Assignments:

- Reopen existing dozer lines and roads from the N29 Road west along Pattison Ridge to Pattison Peak and then south to the Pattison cutoff.
- Continue structure prep at Hayfork Bally around the lookout and Trinity County infrastructure.
- Patrol and mop-up from DP30 south along the N29 Road.
- Scout locations to construct direct line which have a high probability of stopping fire spread to the south towards Hayfork.

7. Special Instructions:

- Store equipment at Drop Points. Secure all equipment to prevent theft.
- GPS all pump locations and turn into Division.
- Backhaul all trash to appropriate disposal site.
- Document any area that may have hazmat or unknown chemicals.
- Red and black candy striped flagging identifies known Arch sites. Please avoid entering these areas and direct equipment around the perimeter.

*** MEDICAL RESPONSE: RA-763 AT DP 121/HELENA (24HRS) AND ARCATA 4 AT WILLOW CAMP (DAY) ***

IF AN ASSIGNED COMMAND DOES NOT WORK, TRY OTHER COMMAND CHANNELS

8. Communications							
Name	Ch	Function	Rx Freq	Rx Tone	Tx Freq	Tx Tone	Notes
CMD2 HB	2	COMMAND	171.53750N	T10 - 107.2	164.86250N	T10 - 107.2	Command Net Hayfork Bally
TAC-5	10	TACTICAL	168.25000N	T10 - 107.2	168.25000N	T10 - 107.2	DIV Z Night and Day
A/G TAC	13	A/G TAC	171.03750N		171.03750N		Incident Air to Ground Tactical
CALCORD	15	MEDICAL	156.0750N	T6 -156.7	156.0750N	T6 - 156.7	
GUARD 13	16	AIR GUARD	168.62500N		168.62500N	T1 - 110.9	

9. Prepared by: Name: Harry Kelmanson, Marisa Williams(T), Kelly Smyth(T) RESL

Signature:

ICS 204 Date/Time: 8/14/2021 2200 Personnel Count: 51

ASSIGNMENT LIST (ICS 204 WF)

CONTROLLED UNCLASSIFIED
INFORMATION//BASIC

1. Incident Name: Monument Fire	2. Operational Period: Date From: 08/15/21 Date To: 08/16/21 Time From: 0700 Time To: 0700	3. Branch Division NIGHT A Page 1 of 1 Alpha
--	---	---

4. Operations Personnel: Operations Section Chief: Steve Burns Branch Director: Division/Group Supervisor: Tod Flowers, Chris Allen(T)	Night Ops: Don Fregulia, Ernie Villa(T) Branch Safety: Air Attack:
--	---

5. Resources Assigned:		** Resources Below in Bold are 12 Hour **					
Resource Identifier	ALS	LWD	Leader	Personnel	Request #	Hours	Reporting Location
SMOD AMERICAN RIVER IHC		8/24	STEPHEN CLIFFORD	9	C-34	1900-0700	Willow Creek Camp
SMOD MODOC CREW 1		8/20	RICHARD ADAMS	11	O-298	1900-0700	Willow Creek Camp
ENG T/F XTU 5176		8/22	DAVID ROSSMAN	17	E-38	0700-0700	Willow Creek Camp
ENG TF XIM 6110		8/25	ALEX SILVA	21	E-224	0700-0700	Willow Creek Camp
ENG3 PVT FIRESTORM 9911		8/20	WILLIAM NERBONNE	3	E-45	1900-0700	Willow Creek Camp
ENG3 NORTH LYON 361		8/19	JT MCCOY	4	E-130	1900-0700	Willow Creek Camp
ENG3 SANTA FE 39		8/21	PORFIRIO CHAVARRIA	5	E-413	1900-0700	Willow Creek Camp
ENG3 AZ-KNF 312		8/28	EDDIE BENAUIEZ	6	E-414	1900-0700	Willow Creek Camp
ENG5 PVT WILDLANDS FIRE SERVICE		8/27	CHASE ROWE	3	E-179	1900-0700	Willow Creek Camp
ENG6 PVT MT ADAMS WILDFIRE 301		8/17	MIKE WILSON	3	E-2	1900-0700	Willow Creek Camp
ENG6 PVT MT ADAMS WILDFIRE 623		8/28	PAULA HOLTER	3	E-4	1900-0700	Willow Creek Camp
ENG6 UT-SWS 665		8/26	HEBER HEYDER	3	E-317	0700-1900	Willow Creek Camp
ENG6 PVT WILDLANDS FIRE 22		8/24	ASHLEY ORLANDO	3	E-331	1900-0700	Willow Creek Camp
DOZ3 PVT BRAD INGRAM CONST. 168		8/20	MIKE UNDERHILL	2	E-168	0700-0700	Willow Creek Camp
WTS2 PVT CATTLE LACK RANCH 21		8/22	EUGENE GRAHAM	2	E-21	0700-0700	Willow Creek Camp
WTS2 PVT CATTLE LACK RANCH 22		8/21	CLANCY ENCOW	1	E-22	1900-0700	Willow Creek Camp
WTT2 SANTAQUIN FIRE 141		8/23	NICK CUMMINGS	2	E-155	0700-0700	Willow Creek Camp
REMS 2 NIGHT	X	8/21	STEVEN HERRERA	4	O-92	1900-0700	Willow Creek Camp

6. Work Assignments:

- Provide structure defense for the communities of Burnt Ranch, Friedrich Road, Cedar Flat and Underwood Mountain.
- Patrol and mop-up previous firing operations from Highway 299 to DP 59.
- Continue firing operations from DP 59 south towards DP 52.
- If resources allow, continue firing from the N28A Road west to N23 Road.
- Defend structures along Corral Bottom Road/47 Road, and Progeny Site in the south half of Section 19.
- Monitor fire on the north side of the Trinity River and south of Ironsides Lookout. If the fire spots to the south side of the Trinity River, notify PG&E immediately.

7. Special Instructions:

****USE TACTICAL FREQUENCIES FROM DAY DIVISIONS****

- Store equipment at Drop Points. Secure all equipment to prevent theft.
- GPS all pump locations and turn in to Division.
- Backhaul all trash to appropriate disposal site.
- Document any area that may have hazmat or unknown chemicals.
- Red and black candy striped flagging identifies known Arch sites. Please avoid entering these areas and direct equipment around the perimeter.



Zoom Briefing

*** MEDICAL RESPONSE: RA-763 AT DP 121/HELENA (24HRS)***

IF AN ASSIGNED RADIO COMMAND CHANNEL DOES NOT WORK, TRY AN ALTERNATE COMMAND CHANNEL

8. Communications							
Name	Ch	Function	Rx Freq	Rx Tone	Tx Freq	Tx Tone	Notes
CMD2 HB	2	COMMAND	171.53750N	T10 - 107.2	164.86250N	T10 - 107.2	Command Net Hayfork Bally
TAC-1	6	TACTICAL	168.05000N	T10 - 107.2	168.05000N	T10 - 107.2	DIV A Day and Night
A/G TAC	13	A/G TAC	171.03750N		171.03750N		Incident Air to Ground Tactical
CALCORD	15	MEDICAL	156.0750N	T6 -156.7	156.0750N	T6 - 156.7	
GUARD 13	16	AIR GUARD	168.62500N		168.62500N	T1 - 110.9	

9. Prepared by: Name: Harry Kelmanson, Marisa Williams(T), Kelly Smyth(T) RESL

Signature: Personnel Count: 102

ICS 204 Date/Time: 8/14/2021 2200

ASSIGNMENT LIST (ICS 204 WF)

CONTROLLED UNCLASSIFIED
INFORMATION/BASIC

1. Incident Name: <p style="text-align: center;">Monument Fire</p>	2. Operational Period: Date From: 08/15/21 Date To: 08/16/21 Time From: 0700 Time To: 0700	3. Branch Division <p style="text-align: center;">NIGHT Z</p> <p style="text-align: center;">Page 1 of 1 Zulu</p>
---	---	--

4. Operations Personnel: Operations Section Chief: Steve Burns Branch Director: Division/Group Supervisor: Frank Alves, Angela Chongpintichai(T)	Night Ops: Don Fregulia, Ernie Villa(T) Branch Safety: Air Attack:
--	---

5. Resources Assigned:	** Resources Below in Bold are 12 Hour **						
Resource Identifier	ALS	LWD	Leader	Personnel	Request #	Hours	Reporting Location
ENG1 S/T OES 4804A		8/27	JEFF TAYLOR	21	E-40	0700-0700	Weaverville Camp
ENG3 S/T OES XLFC 1341C		8/19	JEFF OHS	18	E-172	0700-0700	Weaverville Camp
ENG3 ANF 314		8/26	THAD THOMAS	5	E-405	1900-0700	Weaverville Camp
ENG3 CNF 341		8/27	JONATHAN POLANSKY	5	E-406	1900-0700	Weaverville Camp
ENG6 PVT DON J FORD 131		8/20	DEREK SCIFRES	4	E-131	1900-0700	Weaverville Camp
ENG6 PVT TIMBER RIDGE 118		8/20	JEFF TODD	3	E-178	1900-0700	Weaverville Camp
ENG6 PVT BIRDDOG FIRE 627		8/19	DAVID CAVANAUGH	3	E-181	1900-0700	Weaverville Camp
WTT1 ROCK CREEK		8/19	GREG VAWSER	2	E-80	0700-0700	Weaverville Camp
PUMPZILLA 1 NIGHT		8/18	EMILY DRAIN	2	S-19	0700-0700	Weaverville Camp
PUMPZILLA 2 TRINITY NIGHT		8/19	WALT MALGINNISS	2	S-21	0700-0700	Weaverville Camp
REMS 2 NIGHT	X	8/21	STEVEN HERRERA	4	O-92	1900-0700	Weaverville Camp

6. Work Assignments:

- Provide structure defense for the community of Junction City along Coopers Bar, Red Hill, Coopers Gulch, Carter Ranch, Soldier Creek, Dutch Creek and Lake Roads.
- Hold, mop-up, and patrol fire lines from the Trinity River south to Hocker Meadow.
- Complete and prepare dozer lines along the ridge system from 3N48 Road east to Dutch Creek Road.
- Continue the dozer line from Dutch Creek Road west to 3N08 Soldier Creek Road and from Dutch Creek Road west to 3N84 Road on the eastside of Maple Creek.
- Scout locations to construct direct line which have a high probability of stopping fire spread to the south and east.
- Patrol day shift's firing operations and mop-up as needed.

7. Special Instructions:

****USE TACTICAL FREQUENCIES FROM DAY DIVISIONS****

- Store equipment at Drop Points. Secure all equipment to prevent theft.
- GPS all pump locations and turn in to Division.
- Backhaul all trash to appropriate disposal site.
- Document any area that may have hazmat or unknown chemicals.
- Red and black candy striped flagging identifies known Arch sites. Please avoid entering these areas and direct equipment around the perimeter.



Zoom Briefing

*** MEDICAL RESPONSE: RA-763 AT DP 121/HELENA (24HRS)***

IF AN ASSIGNED RADIO COMMAND CHANNEL DOES NOT WORK, TRY AN ALTERNATE COMMAND CHANNEL

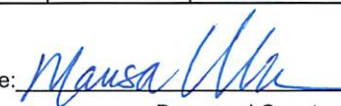
8. Communications							
Name	Ch	Function	Rx Freq	Rx Tone	Tx Freq	Tx Tone	Notes
CMD2 HB	2	COMMAND	171.53750N	T10 - 107.2	164.86250N	T10 - 107.2	Command Net Hayfork Bally
TAC-5	10	TACTICAL	168.25000N	T10 - 107.2	168.25000N	T10 - 107.2	DIV Z Night and Day
A/G TAC	13	A/G TAC	171.03750N		171.03750N		Incident Air to Ground Tactical
CALCORD	15	MEDICAL	156.0750N	T6 -156.7	156.0750N	T6 - 156.7	
GUARD 13	16	AIR GUARD	168.62500N		168.62500N	T1 - 110.9	

9. Prepared by: Name: Harry Kelmanson, Marisa Williams(T), Kelly Smyth(T) RESL

Signature: Personnel Count: 69

ASSIGNMENT LIST (ICS 204 WF)

CONTROLLED UNCLASSIFIED
INFORMATION/BASIC

1. Incident Name: Monument Fire		2. Operational Period: Date From: 08/15/21 Date To: 08/16/21 Time From: 0700 Time To: 0700			3. Branch Division State Contingency	
4. Operations Personnel:					Page 1 of 2	
Operations Section Chief: Steve Burns			Night Ops: Don Fregulia, Ernie Villa(T)			
Branch Director:			Branch Safety:			
Division/Group Supervisor: Nick Ciapponi, Steve Chapman, Clint Swensen			Air Attack:			
5. Resources Assigned:		** Resources Below in Bold are 12 Hour **				
Resource Identifier	ALS	LWD	Leader	Personnel	Request #	Hours Reporting Location
HC1 S/T 9351G			HATCH	18		0700-0700 Weaverville Camp
HC1 S/T 9240G			GUARD		C-2	0700-0700 Weaverville Camp
HC2IA HIGH ROCK CREW 3 FF					C-6	0700-0700 Weaverville Camp
HC2IA DELTA CREW 3						0700-0700 Weaverville Camp
ENG3 S/T 9121C			SMITH	18		0700-0700 Weaverville Camp
ENG3 S/T 9272C			BREMERS	18		0700-0700 Weaverville Camp
ENG3 S/T 9242C			TIM WHITEHURST		E-48	0700-0700 Weaverville Camp
ENG T/F 3286			TODD CORBETT			0700-0700 Weaverville Camp
DOZ2 S/T 9360L					E-47	0700-1900 Weaverville Camp
DOZ2 2440					E-56	0700-0700 Weaverville Camp
DOZ2 1142					E-46	0700-0700 Weaverville Camp
DOZ 2340				2		0700-0700 Weaverville Camp
DOZ PVT SCHNETZER 3			SCHNETZER	4	E-3	0700-0700 Weaverville Camp
DOZ PVT SUNRISE 4			SUNRISE	4	E-4	0700-0700 Weaverville Camp
DOZ PVT COTTONWOOD 5			COTTONWOOD	4	E-5	0700-0700 Weaverville Camp
DOZ RAYGOZA E-6			RAYGOZA	4		0700-0700 Weaverville Camp
DOZ2 73 SHASTA COLLEGE			ROB STRIEFF		E-32	0700-0700 Weaverville Camp
DOZ2 PVT PACKWAY					E-34	0700-0700 Weaverville Camp
6. Work Assignments: -Support Day Divisions W, X, Z and Night Division Z with contingency lines north and south of Maple Creek and perimeter control along Soldier Creek Road.						
7. Special Instructions: - Work with BLM READ's as needed for resource concerns. - Red and black candy striped flagging identifies known Arch sites. Please avoid entering these areas and direct equipment around the perimeter.						
*** MEDICAL RESPONSE: RA-763 AT DP 121/HELENA (24HRS) AND ARCATA 4 AT WILLOW CAMP (DAY) ***						
IF AN ASSIGNED RADIO COMMAND CHANNEL DOES NOT WORK, TRY AN ALTERNATE COMMAND CHANNEL						
8. Communications						
Name	Ch	Function	Rx Freq	Rx Tone	Tx Freq	Tx Tone Notes
IA-CMD	14	COMMAND	171.57500N		165.01250N	T4 - 136.5 Shasta Forest Repeat
TAC-6	11	TACTICAL	168.23750N	T10 - 107.2	168.23750N	T10 - 107.2
A/G TAC	13	A/G TAC	171.03750N		171.03750N	Incident Air to Ground Tactical
CALCORD	15	MEDICAL	156.0750N	T6 -156.7	156.0750N	T6 - 156.7
GUARD 13	16	AIR GUARD	168.62500N		168.62500N	T1 - 110.9
9. Prepared by: Name:		Harry Kelmanson, Marisa Williams(T), Kelly Smyth(T)		RESL	Signature: 	
ICS 204	Date/Time: 8/14/2021		2200	Personnel Count: 72		

ASSIGNMENT LIST (ICS 204 WF)

CONTROLLED UNCLASSIFIED
INFORMATION//BASIC

1. Incident Name: Monument Fire	2. Operational Period: Date From: 08/15/21 Date To: 08/16/21 Time From: 0700 Time To: 0700	3. Branch Division ALL ALL
4. Operations Personnel:		Page 1 of 1

Operations Section Chief: Steve Burns	Night Ops: Don Fregulia, Ernie Villa(T)
Branch Director:	Branch Safety:
Lead READ Brad Rust	Air Attack:

5. Resources Assigned:		** Resources Below in Bold are 12 Hour **					
Resource Identifier	ALS	LWD	Leader	Personnel	Request #	Hours	Reporting Location
REAF RADEMACHER		8/16	ERIK RADEMACHER	1	O-57	0700-1900	Weaverville Camp
REAF JAMIESON		8/25	TRISTAN JAMIESON	1	O-102	0700-1900	Weaverville Camp
REAF FIELDS		8/20	CAROL FIELDS	1	O-103	0700-1900	Weaverville Camp
REAF SHEEDY		8/21	DILLION SHEEDY	1	O-345	0700-1900	Weaverville Camp
REAF RIVERA		8/21	JOSHUA RIVERA	1	O-346	0700-1900	Weaverville Camp
REAF BREITMUN		8/23	MOLLY BREITMUN	1	O-325	0700-1900	Weaverville Camp
REAF(T) FRIEDMAN		8/23	HARRISON FRIEDMAN	1	O-324	0700-1900	Weaverville Camp
REAF BARTZOKIS		8/25	KATIE BARTZOKIS	1	O-453	0700-1900	Weaverville Camp
READ(T) BELL		8/19	TYLER BELL	1	O-213	0700-1900	Weaverville Camp
ARCH GUISTO		8/18	BRET GUISTO	1	O-193	0700-1900	Weaverville Camp
ARCH NEZ		8/23	JASON NEZ	1	O-344	0700-1900	Weaverville Camp
ARCH KELLETT		8/24	MICHAEL KELLETT	1	O-371	0700-1900	Weaverville Camp
ARCH STOKES		8/26	JOE STOKES	1	O-435	0700-1900	Weaverville Camp

6. Work Assignments:

- Work in all divisions as needed, checking in and out of division for specific missions of flagging ARCH sites, T&E species, noxious weeds, and avoidance areas of geological hazard.
- Check water drafting sites, rec sites, track dozer lines and scout new contingency and planned dozer lines.

7. Special Instructions:

- Red and black candy striped flagging identifies known Arch sites. Please avoid entering these areas and direct equipment around the perimeter.

*** MEDICAL RESPONSE: RA-763 AT DP 121/HELENA (24HRS)***

IF AN ASSIGNED RADIO COMMAND CHANNEL DOES NOT WORK, TRY AN ALTERNATE COMMAND CHANNEL

8. Communications							
Name	Ch	Function	Rx Freq	Rx Tone	Tx Freq	Tx Tone	Notes
CMD1 WB	1	COMMAND	173.81250N	T10 - 107.2	168.47500N	T10 - 107.2	Command Net Weaver Bally
A/G TAC	13	A/G TAC	171.03750N		171.03750N		Incident Air to Ground Tactical
CALCORD	15	MEDICAL	156.0750N	T6 -156.7	156.0750N	T6 - 156.7	
GUARD 13	16	AIR GUARD	168.62500N		168.62500N	T1 - 110.9	

9. Prepared by: Name:	Harry Kelmanson, Marisa Williams(T), Kelly Smyth(T)	RESL	Signature:
ICS 204	Date/Time: 8/14/2021	2200	Personnel Count: 13

ICS 205 - INCIDENT RADIO COMMUNICATIONS PLAN

CONTROLLED UNCLASSIFIED
INFORMATION//BASIC

1. Incident Name: Monument Fire Incident Channels	2. Date/Time Prepared Date: 08/14/2021 Time: 1930	3. Operational Period: Date From: 08/15/21 Time From: 0700 Date To: 08/16/21 Time To: 0700
--	--	---

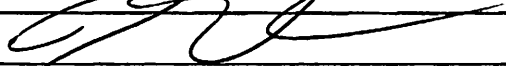
4. Communications								
Ch#	Function	Name	Assigned To	Rx Freq	Rx Tone	Tx Freq	Tx Tone	Notes
1	COMMAND	CMD1 WB	ALL DIVISIONS	173.81250N	T10 - 107.2	168.47500N	T10 - 107.2	Command Net Weaver Bally
2	COMMAND	CMD2 HB	ALL DIVISIONS	171.53750N	T10 - 107.2	164.86250N	T10 - 107.2	Command Net Hayfork Bally
3	COMMAND	CMD3 BC	ALL DIVISIONS	171.08750N	T10 - 107.2	164.60000N	T10 - 107.2	Command Net Bully Choop
4	COMMAND	CMD4 BM	ALL DIVISIONS	173.50000N	T10 - 107.2	165.81250N	T10 - 107.2	Command Net Brush Mountain
5	COMMAND	CMD5 IM	ALL DIVISIONS	173.6500N	T10 - 107.2	164.81250N	T10 - 107.2	Command Net Ironside Mountain
6	TACTICAL	TAC-1	V A, WEST CONTINGENC	168.05000N	T10 - 107.2	168.05000N	T10 - 107.2	DIV A Day and Night
7	TACTICAL	TAC-2	DIV E, DIV U	168.60000N	T10 - 107.2	168.60000N	T10 - 107.2	
8	TACTICAL	TAC-3	DIV G, DIV X	166.72500N	T10 - 107.2	166.72500N	T10 - 107.2	
9	TACTICAL	TAC-4	DIV W	166.77500N	T10 - 107.2	166.77500N	T10 - 107.2	
10	TACTICAL	TAC-5	DIV Z, DIV M	168.25000N	T10 - 107.2	168.25000N	T10 - 107.2	DIV Z Night and Day
11	TACTICAL	TAC-6	STATE CONTINGENCY	168.23750N	T10 - 107.2	168.23750N	T10 - 107.2	
12	A/G CMD	A/G CMD	A/G CMND	171.86250N		171.86250N		Incident Air to Ground Command
13	A/G TAC	A/G TAC	ALL DIVISIONS	171.03750N		171.03750N		Incident Air to Ground Tactical
14	COMMAND	IA-CMD	IA CMND	171.57500N		165.01250N	T4 - 136.5	Shasta Forest Repeat
15	MEDICAL	CALCORD	MEDEVAC	156.0750N	T6 -156.7	156.0750N	T6 - 156.7	
16	AIR GUARD	GUARD 13	EMERGENCY	168.62500N		168.62500N	T1 - 110.9	
17								
18								
19								
20								

5. Special Instructions
 This group is tone locked and tone protected with tone 10 (107.2) on the receive and transmit sides due to exception fire activity and shared tactical frequency use in the immediate vicinity. You must tone protect both sides of the frequencies. The latest radio clone label is MON 13 for this 205.
 Communications trailer phone number: (925) 817-9955

6. Prepared by (Communications Unit Leader): Name: Ken Earle COM	Signature:
---	------------

ICS 205 - INCIDENT RADIO COMMUNICATIONS PLAN

CONTROLLED UNCLASSIFIED INFORMATION/BASIC

1. Incident Name: Monument Fire IA GROUP			2. Date/Time Prepared Date: 08/14/2021 Time: 1930			3. Operational Period: Date From: 08/15/21 Date To: 08/16/21 Time From: 0700 Time To: 0700			
4. Communications									
Ch#	Function	Name	Assigned To	Rx Freq	Rx Tone	Tx Freq	Tx Tone	Notes	
1	COMMAND	SHF-RPT		171.57500N		165.01250N	OST	Shasta Forest Repeat (Tone 4,5,6,9)	
2	COMMAND	SHASTA SERVICE NET		171.50000N		164.82500N	OST	Shasta Service Net (Tone 4,6)	
3	COMMAND	SHU-L		151.16000N		159.27000N	OST	CALFIRE Shasta Command (Tone 3,7)	
4	COMMAND	SRF-R		172.37500N		164.17500N	OST	Six Rivers Forest Repeat (Tone 5,6)	
5	TACTICAL	NIFC T2		168.2000N		168.2000N		I/A Tactical	
6	TACTICAL	R5 T4		166.5500N		166.5500N		I/A Tactical	
7	TACTICAL	R5 T5		167.1125N		167.1125N		I/A Tactical	
8	TACTICAL	CDF T11		151.4450	T16 - 192.8	151.4450	T16 - 192.8	I/A Tactical (Tone 16)	
9	LOCAL GOVT. RPT	XTR-R		154.78500N		158.76000N		Trinity County Command (Tone 10,13)	
10	MONUMENT COMMAND	MON CM2		171.53750N	T10 - 107.2	164.86250N	T10 - 107.2	Monument Command Hayfork Bally (Tone 10)	
11	MONUMENT COMMAND	MON CM4		173.50000N	T10 - 107.2	165.81250N	T10 - 107.2	Monument Command Brush Mountain (Tone 10)	
12	A/G TAC	A/G TAC		171.03750N		171.03750N		Monument A/G Brush Mountain	
13	A/G SECONDARY	AG08 SEC		166.87500N		166.87500N		IA A/G Secondary	
14	AIR TO GROUND	A/G 43		167.60000N		167.60000N		I/A A/G Primary	
15	MEDICAL	CALCORD		156.0750N	T6 -156.7	156.0750N	T6 - 156.7	MEDEVAC Coordination (Tone 6)	
16	AIR GUARD	GUARD	EMERGENCY	168.62500N		168.62500N	T1 - 110.9	Emergency (Tone 1)	
17									
18									
19									
20									
5. Special Instructions									
<p>**IMPORTANT** This IA Group is tone selectable. Older legacy DPH and GPH radios will need to select the proper tone for each channel change including CALCORD and AIRGUARD. DPH Commander radios and KNG P-150 radios will be able to tone select individual channels. Command tones are suggestions. Clone Label... MON IA 08 or 13.</p>									
6. Prepared by (Communications Unit Leader): Name: Ken Earle COM						Signature: 			

AIR OPERATIONS SUMMARY ICS-220						Time Prepared 18:30	Date Prepared Sat. Aug. 14, 2021	Prepared By John Keesee <i>JK</i>					
Incident Name and Incident Number Monument			Sunrise 06:24	Sunset 20:13	Pumpkin 20:43	Operational Period - Date Sun. Aug. 15, 2021		Operational Period - Time 0700-2100					
General Remarks, Safety Notes, Hazards, Air Operations Special Equipment, etc. TRACK ALL DIPSITES LOCATIONS / NUMBER OF DIPS / GALLONS TAKEN. TRACK ALL DROP LOCATIONS / NUMBER OF DROPS / GALLONS DROPPED All GPS DATA TO BE COLLECTED IN DEGREES, MINUTES, DECIMAL MINUTES FORMAT. AVOID Aerial Application of Retardant / Foam / Agent within 300' of Waterways, Bodies of Water, etc. If Retardant / Foam / Agent is Dropped Within These Areas Immediately Notify the AOB and Provide the Following Information: Lat / Long, Estimated Number of Gallons and a Map Detailing The Area.					Helibase Information Name: Willow Creek Latitude: 40° 56.8748'N Longitude: 122° 55.0553'W Name: Latitude: Longitude:		TFR Information Request # A-156 Radius: See TFR Map Altitude: 11,500 MSL CenterPoint: NOTAMS: 1/8177 Frequency 126.275		Rescue Ship Information Day Night See Medical Plan Use local Air Med ships Request Procedure for Aircraft: Contact RICC(530)228-2400 See Medical Plan For Additional Info				
Frequencies	RX	Tone	TX	Tone	AM / FM	Position	Name	Phone	Trainee Name	Phone			
AIR TACTICS	169.7250		169.7250		FM	AOBD	John Keesee	(805)551-6422					
AIR / AIR Rotary Wing	123.7750		123.7750		AM	ASGS	David Carrera	(760)883-9110					
AIR / AIR - TFR	126.275		126.275		AM	ASGS(t)	Cole Wallace	(907)204-1444					
AIR / GROUND - Tactical	171.0375		171.0375		FM	HEBM	Ira Graves	(707)327-7554					
AIR / GROUND - Command	171.8625		171.8625		FM	ATGS							
COMMAND	See	Comm	Plan		FM	HLCO							
TOLC					AM	HLCO							
DECK	168.3500		168.3500		FM								
CALCORD - MEDICAL	156.0750	156.7 (6)	156.0750	156.7 (6)	FM								
AIRGAURD - Emergency Only	168.6250		168.6250	110.9 (1)	FM								
HELICOPTERS (Use page 2 if Needed)													
FAA #	Type	Make/Model	Helibase	Avail	Start	Remarks / A - #	FAA #	Type	Make/Model	Helibase	Avail	Start	Remarks / A - #
1CK	1	S-61	Willow Creek	08:30	08:00	A-11							
5TH	1	KMAX	Willow Creek	08:30	08:00	A-10							
8AC	1	S-64F	Willow Creek	08:30	08:00	A-34							
48Y	1	S-61	Redding	08:30	08:00	A-147							
3HT	2	B-205	Willow Creek	08:30	08:00	A-97							
520	2	B-205	Willow Creek	08:30	08:00	A-68							
503	3	B-407	Willow Creek	08:30	08:00	A-152	Dipsites	Lat	Long				
							Trinity River						
							MRB	40 48.293N	123 28.375W	Bumt Ranch	08:30	08:00	
FIXED WING (Use Page 2 if Needed)													
FAA #	Type	Make/Model	Base	Avail	Start	Remarks	FAA #	Type	Make/Model	Base	Avail	Start	Remarks
Romeo 31	3	UAS			19:00	A-144							

INCIDENT RISK ANALYSIS

ICS (215A) DAY/NIGHT SHIFT

BR/DV	HAZARDOUS ACTIONS – CONDITIONS	MITIGATIONS – WARNINGS – REMEDIES
ALL	STEEP TERRAIN & ROLLING DEBRIS	<ul style="list-style-type: none"> • Maintain 8'-10' spacing when working & walking. • Do not work above any personnel. • Evaluate necessity to send personnel in areas with limited access.
ALL	HAZARD / DANGER TREES	<ul style="list-style-type: none"> • Follow Hazard Tree Safety Guidelines (IRPG p.22.) • Limit number of personnel around snags and their exposure time • Fallers must be qualified for the trees being felled. • Be alert around hazard trees during wind events, even green trees. • The hazard zone extends a minimum of 2½ tree lengths. • Avoid parking vehicles or taking breaks under or near hazard trees.
ALL	FIRE BEHAVIOR	<ul style="list-style-type: none"> • Are you seeing what we have predicted? • Conduct thorough assessments before starting work. • Ensure LCES is in place • Plan & communicate your exit strategy with your crew and adjacent resources. • Provide additional briefing for new resources and maintain communications. • <u>Outflow winds from thunderstorms could negatively affect fire behavior.</u>
ALL	TRAFFIC HAZARDS AND DRIVING	<ul style="list-style-type: none"> • Many roads are narrow and mid-slope, with soft shoulders. Allow heavy vehicles to pass on uphill side. Use spotters when backing or turning around. • Practice "Defensive Driving" techniques. Assume other drivers are fatigued and complacent. • Use warning lights when working on roads or traveling in smoke. • Drive at or below posted speed limits. • Use chock blocks, turn wheels into hill. • Be alert for wildlife. Dusk to Dawn pose the greatest potential for accidents.
ALL	WILDLAND URBAN INTERFACE OPERATIONS	<ul style="list-style-type: none"> • Maintain continuous Situational Awareness based upon the fire environment, observed fire behavior, hazards and incident objectives. • Refer to IRPG Page 12-16 for WUI preparation, preplanning, and hazards. • Be active and engage in defense preparations & do not wait for the fire to arrive. • Beware of unknown chemicals when working near structures or garden plots. • Be decisive in tactical engagement. Know when to engage or not. • Establish management decision points, Safety Zones, TRA's, and Escape Routes.
ALL	FIRING OPERATIONS	<ul style="list-style-type: none"> • Only personnel trained in the use of each device will be authorized to use firing equipment. • Ensure that all personnel are briefed and prepared for firing and holding operations. • Ensure that all ground and Ariel ignition plans are approved and signed by the IC prior to implementation.
ALL	COMMUNICATIONS	<ul style="list-style-type: none"> • Share your Situational Awareness (hazards, changes, etc.) to those who also have a need. • Answer questions when asked by others. Ask for intel when you do not know the plan. • Ensure all personnel are familiar with the incident and IA communications plans.
ALL	HEAT RELATED ILLNESS	<ul style="list-style-type: none"> • Drink 2 to 1 water to sports drinks. • Take frequent breaks, minimum of 10 minutes every hour. • Recognize symptoms of HEAT RELATED ILLNESS which include low energy, cramping, headaches, dizziness, poor rest, poor eating habits, hot skin, and lack of sweating.
ALL	INDIRECT LINE CONSTRUCTION	<ul style="list-style-type: none"> • Establish and maintain LCES. • Locate line in favorable location, lighter fuels, and gentler topography when possible. • Utilize natural or existing barriers.
ALL	AIR OPERATIONS	<ul style="list-style-type: none"> • Follow "Aviation Watch-Out Situations" on page 46, IRPG. • Do not plan on air resources for tactical support or medical transportation. • Refer to page 58, IRPG for directing bucket drops. • Ensure positive communication with all air resources.

INCIDENT NAME:

Monument

OPERATIONAL PERIOD:

0700 – 0700

August 15-16,2021

Date/Time Prepared: 08/14/2021 – 1400 hrs



Wildland Fire COVID-19 Screening Tool

DO YOU HAVE ANY OF THESE SYMPTOMS?

Today or in the past 24 hours, have you had any of the following symptoms listed below, in addition to your normal work-related issues?

- Fever, felt feverish, or had chills? Repeated shaking with chills?
- Cough? Shortness of breath or difficulty breathing?
- Muscle pain? Headache? Sore throat?
- New loss of taste and/or smell?

If in doubt about any of these symptoms, consult a Physician.

In the past 14 days, have you had contact with a person known to be infected with the coronavirus (COVID-19)?

Take temperature with touchless thermometer if available

INSTRUCTIONS FOR SCREENING

- If resource is positive for any symptoms prior to mobilization **DO NOT MOBILIZE.**
- At Entries – Consider the adequate number of personnel needed for screening. Although medical personnel are ideal, screeners do not have to be medically trained.
 - o If resource is positive for any symptoms including fever (over 100.4) at entry **DO NOT ANNOUNCE-** ask to step aside.
 - o Escort sick individual to isolation area.
 - o Isolation support personnel should begin documentation. Have sick individual contact Supervisor for further direction.
 - o Notify public health officials.
 - o Have individual transported as appropriate.
 - o Protect and secure any collected Personal Identifiable Information or Personal Health Information.

In the event that you, or personnel assigned to you, have any of the symptoms listed in the Wildland Fire COVID-19 Screening Tool:

- *Do not enter ICP, Camps, or other facilities.*
- *Do not utilize the food unit or mobile sleepers.*

Notify your incident supervisor, safety, or medical personnel. You will be directed to a location where assessment, testing, isolation and support services will be provided.



The following sites are available to Monument Fire Personnel interested in testing or vaccination

COVID-19 Testing:

State testing at the Boggs Building,
2420 Breslauer Way, Redding, CA
9:30 a.m. to 5:30 p.m. Monday through Friday.

Covid Clinic Redding, Free PCR Testing
<https://www.covidclinic.org/redding/>
1055 Dana Dr, Redding, CA
7:30 a.m. to 5 p.m. Monday through Saturday, 8 a.m. to 4 p.m. Sunday
Reservation required 24 hours in advance.

COVID-19 Vaccinations:

Make an appointment in one of these ways:

My Turn

<https://myturn.ca.gov/>

VaccineFinder

<https://www.vaccines.gov/> (Local pharmacies)

**MONUMENT FIRE
FINANCE PROCESS
CA-SHF-001187**

Demob Process for Finance – 8/15 thru 8/17

Willow Creek Camp Resources

OES resources need to contact the OES Representative located at the Weaverville Camp for directions on what they need to do for demob.

Federal and Contract resources check in with the Finance section at the camp and they will process your time. Contact 24 hours prior to demobbing to ensure that they have all your times.

Weaverville Camp Resources

OES resources need to go through the OES Representative located at the camp.

Federal and Contract resources will be demobbed virtually unless other arrangements are made.

24 hours prior to demob, call Finance in Redding, at 213-431-4035 to ensure that they have all your times, provide them with a contact phone number and email. At that time, you will be in touch with a person who will be your contact. That individual will be checking to make sure they have all your ctr's/shift tickets, and let you know of the process to complete your OF-288/OF-286.

**For all other documents for Finance if you aren't able to drop off your documents in one of the camps please email Finance to:
2021.monument.finance@firenet.gov**

Weaverville Camp Elaine Downing – Comp/Claim 928-486-5295 Elaine_Downing@firenet.gov	Willow Creek Susan Haggerty – Comp/Claims 505-365-3971 Susan_Haggerty@firenet.gov
---	--

Finance:
Personal Time/Equipment Time/Cost/FSC
(213) 431-4035 or (360) 605-6225
or email
2021.monument.finance@firenet.gov

Please call Finance at the number listed for the issues listed below:

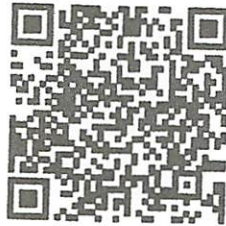
Equipment Time:

C-7	GFP Enterprises	E-54	The Howard Inc.
E-32 thru E-34	Evans Right of Way	E-168	Brad Ingram
E-170	Brown Construction	E-236	Kimberly Fullenwider



Local Government Resources on CFAA
Please check in with me if you have not already

**OES JOB AIDS, FORMS, F-42 SAMPLES AND
CFAA AGREEMENT**



**Your Region 3 OES AREP
Patrick Titus
916-634-9225**

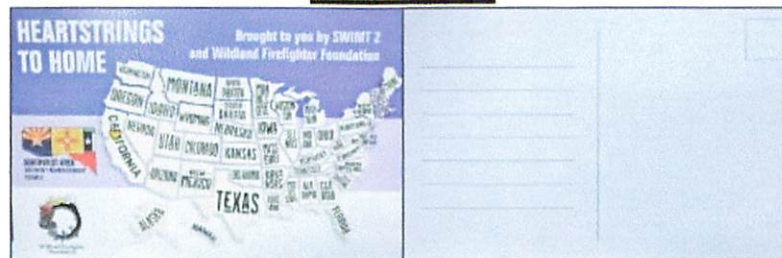


Human Resource Message

How to Overcome Conflict between Two People

- | | |
|---|--|
| <ol style="list-style-type: none"><u>1.</u> Set ground rules. Ask all parties to treat each other with respect and to make an effort to listen and understand others' views.<u>2.</u> Ask each participant to describe the conflict, including desired changes. Direct participants to use "I" statements, not "you" statements. They should focus on specific behaviors and problems rather than people.<u>3.</u> Ask participants to restate what others have said.<u>4.</u> Summarize the conflict based on what you have heard and obtain agreement from participants. | <ol style="list-style-type: none"><u>5.</u> Brainstorm solutions. Discuss all of the options in a positive manner.<u>6.</u> Rule out any options that participants agree are unworkable.<u>7.</u> Summarize all possible options for a solution.<u>8.</u> Make sure all parties agree on the next steps.<u>9.</u> Close the meeting by asking participants to COVID elbow bump and thank each other for working to resolve the conflict. |
|---|--|

Reminder!



Please stop by the HRSP Trailer to fill out your free postcard. Just stop by fill them out, we will stamp them, and mail them out for **FREE!** We will also have postcards with us at the briefings each day.

Feel free to call/text or come by any time if you have questions, concerns, or just want to chat.

HRSP: Andrea Cabida, 707-330-9939,
andrea.cabida@usda.gov.

HRSP(t): Armando Vargas, 707-980-2864,
armando.vargas@usda.gov.

INFORMATION SECTION



Public/Media Information Line: 530-628-0039

InciWeb: <https://inciweb.nwcg.gov/incident/7750/>

Facebook: www.facebook.com/ShastaTrinityNF

Twitter: <https://twitter.com/ShastaTrinityNF>

PIO Contacts

Redding ICP

Nathan Judy: 626-716-0846

Weaverville Camp

Barbara Rebiskie: 530-409-5353

Willow Creek Camp

Jim Mackensen: 530-701-1437

IF you have photos or video from this fire please SCAN the QR code below and send your photos and videos directly to us.

REMEMBER:

- Make sure Firefighters are wearing all PPE
- Give us the time and date, location, crew or person shown, etc.
- Show your Agency in a positive light, be professional.
- Do not take photographs of accidents, injuries, near misses, etc.



Other items the Information Section can assist you with

**LOST & FOUND
MAIL DROPOFF (with postage)
PACKAGE PICK-UP (MUST HAVE YOUR E/O NUMBER ON LABEL)**

Until satellite camps are established, please contact your local camp PIO.

**ICP Mail address:
Holiday Inn Redding Hotel
1900 Hilltop Drive
Redding, CA 96002**

Media Access Law

Media – the California State Penal Code 409.5(D) allows for media to enter scenes of disaster, riot or civil disturbance. Properly identified members of the news media should not be restricted from entering locations specific within the penal code. However, this does not include crime scenes, private property and the new media may not interfere with incident operations. Please always treat the media with courtesy and respect and advise the public information office if there are any issues.

Photographs and videos of the incident – Please refrain from posting incident related videos to your social media. It may be unsafe to shoot photos or video and a firefighter who is concentrating on a camera may lose their situational awareness. When this happens, it could reflect poorly on all that are assigned to the incident.

Please email photo submissions to: 2021.monument@firenet.gov

WEAVERVILLE CAMP

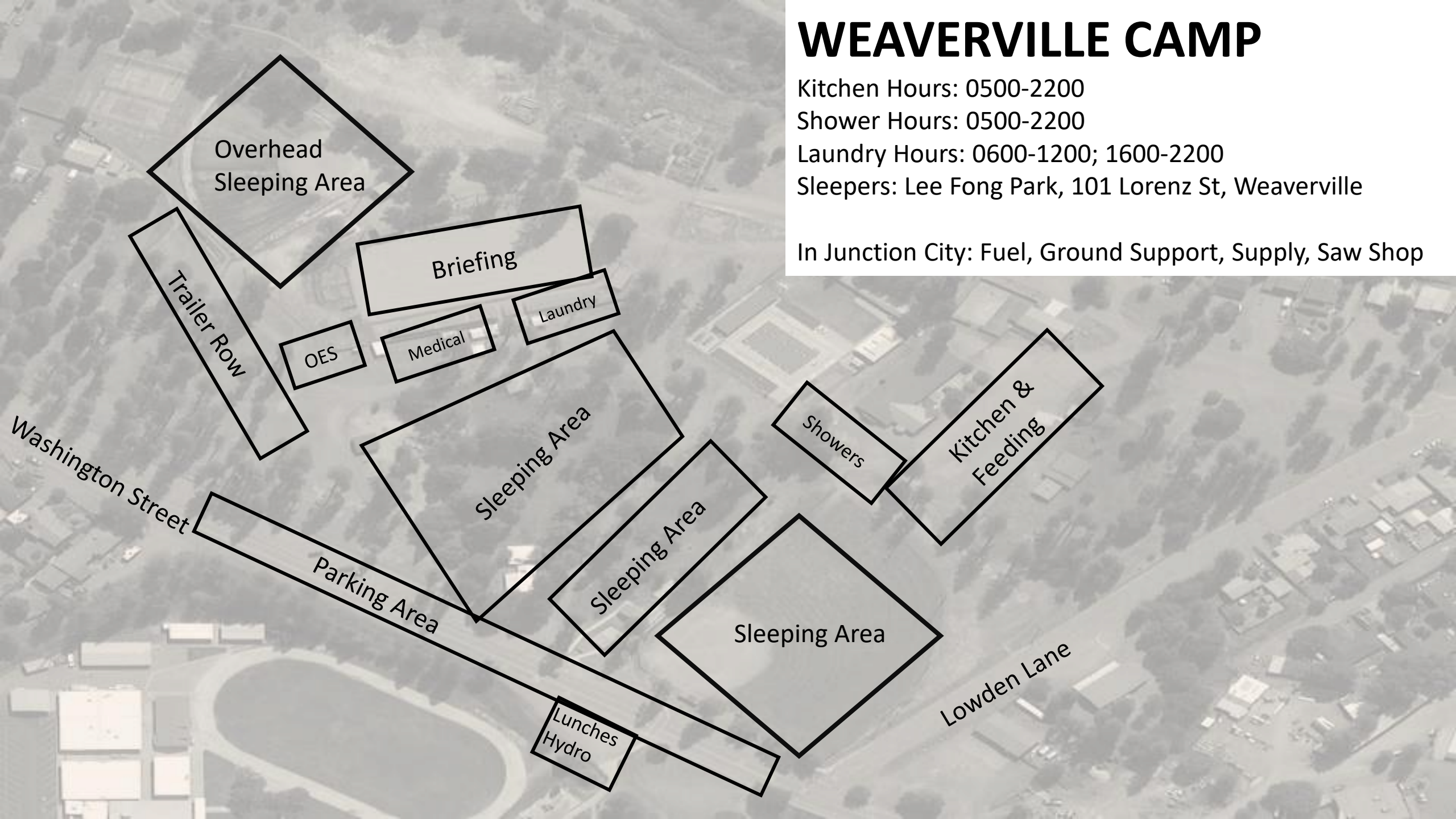
Kitchen Hours: 0500-2200

Shower Hours: 0500-2200

Laundry Hours: 0600-1200; 1600-2200

Sleepers: Lee Fong Park, 101 Lorenz St, Weaverville

In Junction City: Fuel, Ground Support, Supply, Saw Shop



Overhead
Sleeping Area

Trailer Row

Briefing

OES

Medical

Laundry

Sleeping Area

Showers

Kitchen &
Feeding

Washington Street

Parking Area

Sleeping Area

Sleeping Area

Lunches
Hydro

Lowden Lane

Hwy 299

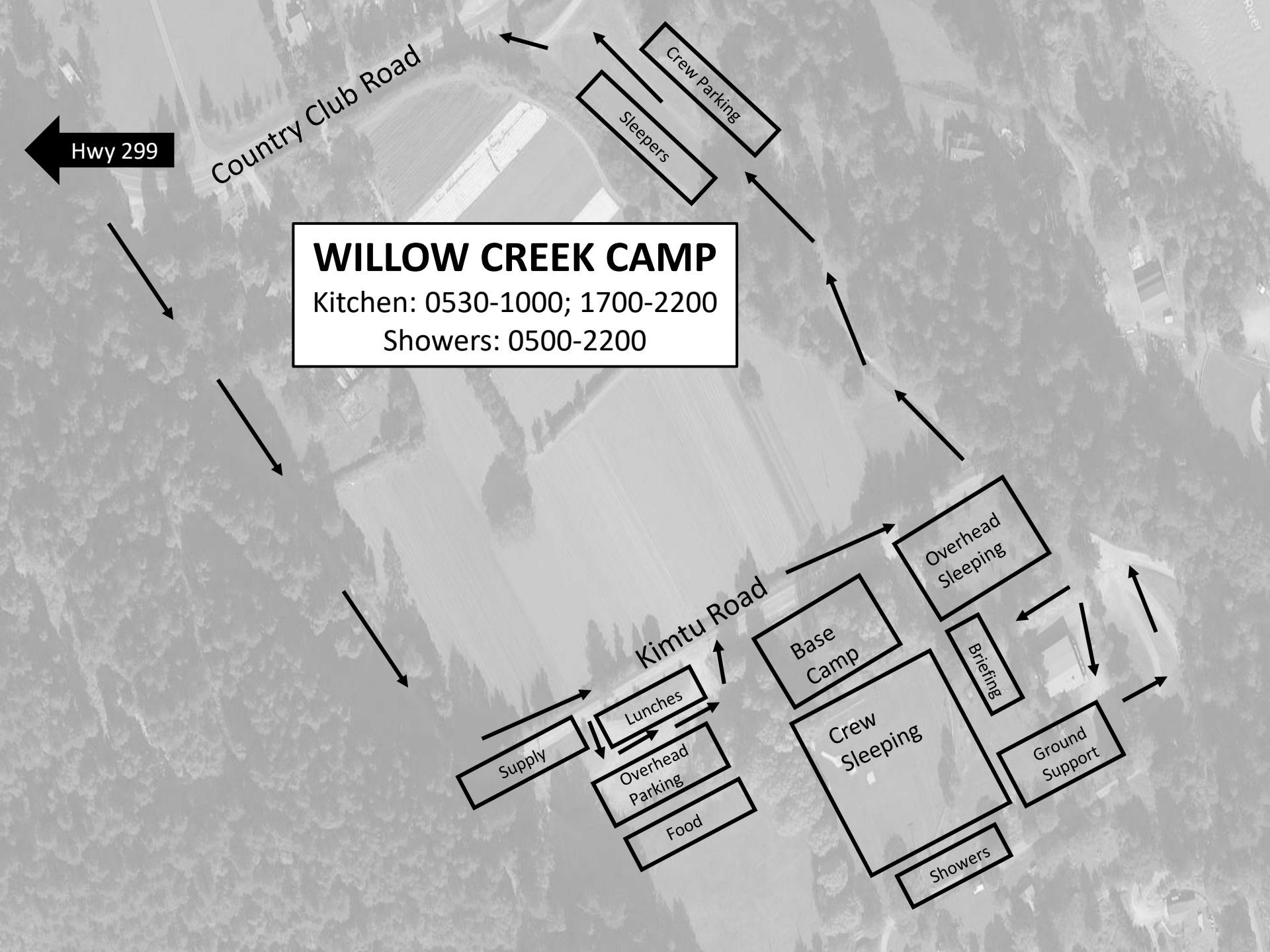
Country Club Road

WILLOW CREEK CAMP
Kitchen: 0530-1000; 1700-2200
Showers: 0500-2200

Crew Parking
Sleepers

Kimtu Road

Supply
Lunches
Overhead Parking
Food
Base Camp
Crew Sleeping
Showers
Overhead Sleeping
Briefing
Ground Support



Monument Fire Incident Training Program

A TNSP is assigned to this incident and will be performing the majority of duties "virtually".

To receive documented credit for your assignment, scan the QR Code or click on the link below to access and complete the Trainee Registration Form. Once registered you will receive additional instructions via text. For training related questions, call Jim Mitchell (TNSP) at 619-247-9396 or email jim_mitchell@fws.gov



[Monument Fire - Incident Trainee Registration Form](#)



Monument Fire Demob List

08/15/21



REPORT TO GROUND SUPPORT IN JUNCTION CITY

***REMOTE DEMOB* CALL DEMOB AT 951-323-5547**

2021.monument.demob@firenet.gov

REQUEST NUMBER		NAME	REPORT TO GROUND SUPPORT
C1	HC2I	IRON MOUNTAIN	0600
E-10	DOZ2	INF DOZER 3	0615
E-6	ENG6	ID-CTF -E651	0630
O-14	WFM2	HAT CREEK	0645
E-26	DOZ3	PVT NORTHWESTERN	0700
O-375	FFT2	REA, MONIQUE	0715

REPORT AT SCHEDULED TIME

LINE ORDER FORM

ORDER #	DATE & TIME ORDERED Received from the Line	WHO PLACED ORDER DIVS, OPS, etc...	DELIVER to (DIV, Helispot, DP, etc.) Division, Heli-Spot, Drop Point, etc.	MODE of DELIVERY Drive, Heli, pick-up

Order Received in Communications By: _____ **TIME:** _____

Communications Relayed/Placed the Order To: _____ **TIME:** _____

Order Shipped to the Line By (Name): _____ **TIME:** _____

ITEM#	DESCRIPTION	AMOUNT
1	1,000 Foot Hose Lay: Includes the following 10 lengths, 1 1/2" x 100' Hose. 10 lengths, 1" x 100' Hose. 10ea. 1 1/2" Gated Wyes. 10ea. 1 1/2" to 1" Reducers. 10ea. 1" Nozzles.	
2	2,000 Foot Hose Lay: Includes the following 20 lengths, 1 1/2" x 100' Hose. 20 lengths, 1" x 100' Hose. 20ea. 1 1/2" Gated Wyes. 20ea. 1 1/2" to 1" Reducers. 20ea. 1" Nozzles.	
3	3,000 Foot Hose Lay: Includes the following 30 lengths, 1 1/2" x 100' Hose. 30 lengths, 1" x 100' Hose. 30ea. 1 1/2" Gated Wyes. 30ea. 1 1/2" to 1" Reducers. 30ea. 1" Nozzles.	

ITEM#	REQUESTED ITEM	NFES#	AMOUNT	ITEM#	REQUESTED ITEM	NFES#	AMOUNT
4	Backpack Pump, 5 gallon	1149		26	Batteries, "AA", (package)	0030	
5	Foam, 5 gallon	1145		27	Gasoline, Unleaded (gallon)		
6	Hose, 3/4 inch, 50 ft. length	1016		28	Oil, 2 Cycle Mix (quart)	0341	
7	Hose, 1 inch, 100 ft. length	0966		29	Diesel, straight (gallon)		
8	Hose, 1 1/2 inch, 100 ft. length	0967		30	Oil, Bar & Chain (gallon)	1880	
9	Increaser, 3/4" to 1"	2235		31	Fusees (box)	0105	
10	Increaser, 1" to 1 1/2"	0416		32	Torch, Drip Torch ea.	0241	
11	Nozzle, Garden 3/4 inch	0136		33	Mix, Drip Torch 3-1, 5 gal.		
12	Nozzle, Forester, 1"	0024		34	Flagging, Ribbon, Color/Roll		
13	Nozzle, KK Type, 1"	1081		35	Washcloth, Waterless	0206	
14	Nozzle, KK Type, 1 1/2"	1082		36	Water, Cubi, 5 gallon ea.	0048	
15	Reducer, 1" to 3/4"	0733		37	Water, Bottled, (case)		
16	Reducer, 1 1/2" to 1"	0009		38	Sports Drink, Gatorade (case)		
17	Tee, Hoseline, 1"x1"x 3/4"	1809		39	Food, MRE's (12 per Box)	1842	
18	Tee, Hoseline, 1"x1"x 1"	2240		40	Pump Kit, High Pressure	0870	
19	Tee, Hoseline, 1 1/2" x 1 1/2" x 1"	0230		41	Pump, High Pressure	0148	
20	Wye, Gated, 3/4" inch	0904		42	Pump Kit, Light Weight	0670	
21	Wye, Gated, 1"	0259		43	Sprinkler Kit	1048	
22	Wye, Gated, 1 1/2"	0231		44	Pump Kit, Volume	6041	
23	Tank, Collapsible. Capacity Gallons?			45	Mop-Up Kit	0772	
24	Tank, Folding/Frame. Capacity ??						
25	Wrap, Structure (roll)	0881					

Date and Time Needed: _____ **Point of Contact at Delivery Location:** _____

OTHER / NOTES:

LINE ORDER FORM

ORDER #	DATE & TIME ORDERED Received from the Line	WHO PLACED ORDER DIVS, OPS, etc...	DELIVER to (DIV, Helispot, DP, etc.) Division, Heli-Spot, Drop Point, etc.	MODE of DELIVERY Drive, Helo, pick-up

Order Received in Communications By: _____ **TIME:** _____

Communications Relayed/Placed the Order To: _____ **TIME:** _____

Order Shipped to the Line By (Name): _____ **TIME:** _____

ITEM#	DESCRIPTION	AMOUNT
1	1,000 Foot Hose Lay: Includes the following 10 lengths, 1 1/2" x 100' Hose. 10 lengths, 1" x 100' Hose. 10ea. 1 1/2" Gated Wyes. 10ea. 1 1/2" to 1" Reducers. 10ea. 1" Nozzles.	
2	2,000 Foot Hose Lay: Includes the following 20 lengths, 1 1/2" x 100' Hose. 20 lengths, 1" x 100' Hose. 20ea. 1 1/2" Gated Wyes. 20ea. 1 1/2" to 1" Reducers. 20ea. 1" Nozzles.	
3	3,000 Foot Hose Lay: Includes the following 30 lengths, 1 1/2" x 100' Hose. 30 lengths, 1" x 100' Hose. 30ea. 1 1/2" Gated Wyes. 30ea. 1 1/2" to 1" Reducers. 30ea. 1" Nozzles.	

ITEM#	REQUESTED ITEM	NFES#	AMOUNT	ITEM#	REQUESTED ITEM	NFES#	AMOUNT
4	Backpack Pump, 5 gallon	1149		26	Batteries, "AA", (package)	0030	
5	Foam, 5 gallon	1145		27	Gasoline, Unleaded (gallon)		
6	Hose, 3/4 inch, 50 ft. length	1016		28	Oil, 2 Cycle Mix (quart)	0341	
7	Hose, 1 inch, 100 ft. length	0966		29	Diesel, straight (gallon)		
8	Hose, 1 1/2 inch, 100 ft. length	0967		30	Oil, Bar & Chain (gallon)	1880	
9	Increaser, 3/4" to 1"	2235		31	Fusees (box)	0105	
10	Increaser, 1" to 1 1/2"	0416		32	Torch, Drip Torch ea.	0241	
11	Nozzle, Garden 3/4 inch	0136		33	Mix, Drip Torch 3-1, 5 gal.		
12	Nozzle, Forester, 1"	0024		34	Flagging, Ribbon, Color/Roll		
13	Nozzle, KK Type, 1"	1081		35	Washcloth, Waterless	0206	
14	Nozzle, KK Type, 1 1/2"	1082		36	Water, Cubi, 5 gallon ea.	0048	
15	Reducer, 1" to 3/4"	0733		37	Water, Bottled, (case)		
16	Reducer, 1 1/2" to 1"	0009		38	Sports Drink, Gatorade (case)		
17	Tee, Hoseline, 1"x1"x 3/4"	1809		39	Food, MRE's (12 per Box)	1842	
18	Tee, Hoseline, 1"x1"x 1"	2240		40	Pump Kit, High Pressure	0870	
19	Tee, Hoseline, 1 1/2" x 1 1/2" x 1"	0230		41	Pump, High Pressure	0148	
20	Wye, Gated, 3/4" inch	0904		42	Pump Kit, Light Weight	0670	
21	Wye, Gated, 1"	0259		43	Sprinkler Kit	1048	
22	Wye, Gated, 1 1/2"	0231		44	Pump Kit, Volume	6041	
23	Tank, Collapsible. Capacity Gallons?			45	Mop-Up Kit	0772	
24	Tank, Folding/Frame. Capacity ??						
25	Wrap, Structure (roll)	0881					

Date and Time Needed: _____ **Point of Contact at Delivery Location:** _____

OTHER / NOTES:

MEDICAL PLAN	1. INCIDENT NAME: Monument	2. DATE PREPARED: August, 14 2021	3. TIME PREPARED: 1600	4. OPERATIONAL PERIOD 08/15/21-08/16/21 0700-0700
---------------------	-------------------------------	--------------------------------------	---------------------------	--

5. INCIDENT MEDICAL AID STATIONS

MEDICAL AID STATIONS	LOCATION	ALS	
		YES	NO
Frontline Medical	Weaverville Base 230 Washington St, Weaverville, CA	XX	
Frontline Medical	Willow Creek Base 100 Kimtu Rd, Willow Creek, CA	XX	

6. TRANSPORTATION

A. Ambulance Services

NAME	LOCATION	PHONE	ALS	
			YES	NO
Rescue Ambulance (RA) 763	Pigeon Point / DP-121		XX	
Ambulance 4	Willow Creek		XX	
REMS-1 DAY	Hwy 299/DP-20/Big Bar		XX	
REMS-2 NIGHT	Hwy 299/DP-20/Big Bar		XX	

B. AIR AMBULANCE

NAME	LOCATION	ALS	BLS
PHI	Redding	XX	
CHP H-14,16 (Holst Day)	Redding	XX	
Cal Fire H-902	Kneeland, Day Only		XX
Cal. National Guard C-820 (Holst-Night)	Redding 2000-0800	XX	

7. HOSPITALS

NAME	ADDRESS	TRAVEL TIME		PHONE	TRAUMA		HELIPAD		BURN CENTER	
		AIR	GRND		Yes	No	Yes	No	Yes	No
		Mercy Medical Center	2175 Rosaline Ave Redding, Ca 40°35.60' N, 122°23.34' W		25 Min	1.5Hrs.	(530) 225-7201	L-2		XX
Shasta Regional Hospital	1100 Butte St. Redding 40°58.53' N, 122°38.69' W	25 Min	1.5Hrs.	(530) 244-5353		XX	XX			XX
Trinity Hospital	60 Easter Ave. Weaverville, Ca	N/A	20 Min	(530) 623-5541		XX		XX		XX
U.C. Davis Medical Center	2315 Stockton Blvd. Sacramento, Ca. 38°33.32' N 121°27.35' W	1 Hr.	3 Hrs.	(916) 703-6576	L-1		XX			XX
St. Joseph Medical Center	2700 Dolbeer St. Eureka, Ca. 40°47.03' N 124°08.80' W	20 Min.	1.5 Hrs.	(707) 269-4250		XX	XX			XX
Mad River Community Hospital	3800 Janes Rd. Arcata, Ca. 40°53.72' N 124°05.45' W	20 Min.	1.5 Hrs.	(707) 826-8264 Extension #1		XX	XX			XX

8. MEDICAL EMERGENCY PROCEDURES

"RED IWI" MEDICAL-EMERGENCY PLAN:

- Contact Communications on **Command** and declare you have a **RED IWI**
- Following the 8-Line on the back of the IAP or page 118 of the 2018 IRPG
- Tell them **Who** you are, **Where** you are at, **What** you have, and **What** you need.
- Update Communications once the patient has been transported.
- Close the loop with MEDL at the end of shift.

"Yellow or Green" NON-EMERGENCY MEDICAL PLAN:

- Contact Division / Communications and declare you have a **"Non-Emergency Medical."**
- Complete the 8-line if needed and turn it in to the medical unit at the end of the shift.

9. PREPARED BY
MEDL – Robert Russell

10. REVIEWED BY
SOF1- Dave Welch

Medical Incident Report

FOR A **NON-EMERGENCY INCIDENT**: WORK THROUGH CHAIN OF COMMAND TO REPORT AND TRANSPORT INJURED PERSONNEL AS NECESSARY.

FOR A **MEDICAL EMERGENCY**: IDENTIFY ON SCENE INCIDENT COMMANDER BY NAME AND POSITION AND ANNOUNCE **"MEDICAL EMERGENCY"** TO INITIATE RESPONSE FROM COMMUNICATIONS

Use the following items to communicate situation to communications/dispatch.

1. CONTACT COMMUNICATIONS / DISPATCH (Verify correct frequency prior to starting report)

Ex: "Communications, Div. Alpha. Stand-by for Emergency Traffic."

2. INCIDENT STATUS: Provide incident summary (including number of patients) and command structure.

Ex: "Communications, I have a Red priority patient, unconscious, struck by a falling tree.

Requesting air ambulance to Forest Road 1 at (Lat./Long.)

"This will be the Trout Meadow Medical Incident, IC is TFLD Jones. EMT Smith is providing medical care."

Severity of Emergency AND Transport Priority (priority 1, 2, 3)	<input type="checkbox"/> RED / PRIORITY 1 Life or limb threatening injury or illness. Evacuation need is IMMEDIATE <i>Ex: Unconscious, difficulty breathing, bleeding severely, 2° - 3° burns more than 4 palm sizes, heat stroke, disoriented.</i>
	<input type="checkbox"/> YELLOW / PRIORITY 2 Serious Injury or illness. Evacuation may be DELAYED if necessary. <i>Ex: Significant trauma, unable to walk, 2° - 3° burns not more than 1-3 palm sizes.</i>
	<input type="checkbox"/> GREEN / PRIORITY 3 Minor Injury or illness. Non-Emergency transport <i>Ex: Sprains, strains, minor heat-related illness.</i>
Nature of Injury or Illness & Mechanism of Injury	Brief Summary of Injury or Illness <i>(Ex: Unconscious, Struck by Falling Tree)</i>
Transport Request	Air Ambulance / Short Haul/Hoist Ground Ambulance / Other
Patient Location	Descriptive Location & Lat. / Long. (WGS84)
Incident Name	Geographic Name + "Medical" <i>(Ex: Trout Meadow Medical)</i>
On-Scene Incident Commander	Name of on-scene IC of Incident within an Incident <i>(Ex: TFLD Jones)</i>
Crew Patient Care	Name of Care Provider <i>(Ex: EMT Smith)</i>

3. INITIAL PATIENT ASSESSMENT: Complete this section for each patient as applicable (start with the most severe patient)

Agency Affiliation: (NO PATIENT NAMES) Federal Contractor Local Government

Patient Assessment: Age: Weight: Chief Complaint:

(If pertinent to Injury) Skin Signs: (color/moisture/temp) Level of Consciousness: BP: HR: Respirations:

Treatment:

4. TRANSPORT PLAN:

Evacuation Location (*drop point, intersection, helispot, Lat. / Long, hazards*) Patient's ETA to Location:

5. ADDITIONAL RESOURCES / EQUIPMENT NEEDS:

Paramedic / EMT - Crews - Immobilization Devices - AED - Oxygen - Trauma Bag - IV/Fluid(s) - Splints - Rope rescue - Wheeled litter - HAZMAT - Extrication

6. COMMUNICATIONS: Identify State Air/Ground EMS Frequencies and Hospital Contacts as applicable

Function	Channel Name/Number	Receive (RX)	Tone/NAC *	Transmit (TX)	Tone/NAC *
COMMAND					
AIR-TO-GRND					

7. CONTINGENCY: Considerations: If primary options fail, what actions can be implemented in conjunction with primary evacuation method?
Be thinking ahead.

8. ADDITIONAL INFORMATION: Updates/Changes, etc.

REMEMBER: Confirm ETA's of resources ordered. Act according to your level of training. Be Alert - Keep Calm - Think Clearly - Act Decisively

*** Follow up with MEDL upon return to ICP ***