



Monument Fire



September 26, 2021

Sunday 0700 - 1900

CA-SHF-001187 (Monument)—P5N7GJ/0514

Safety Speaks

Operational Tempo!

We are in the process of team transition on an incident that has numerous camps and challenging communications. To help insure a smooth and safe transition please follow the recommended mitigations.



Recommended mitigations:

- Transfer of command TODAY at 0600. Take the extra time to assure that everyone has the same understanding of leader's intent and work instruction.
- Know who you are working for.
- Know and understand the communications plan for your area of operation.
- Maintain situational awareness. **Take 5 at 2.** Break for 5 mins at 1400 to reassess your situation.
- Think LCES, if one piece is missing, widen your safety margin.
- The incident REQUIRES PATIENCE, but be prepared for changes. What you planned may not work, have a "plan B" thought out and be proactive. Hope is not a plan.
- Are you prepared for a Medical Emergency, what are your options based on your location?

Use this QR Code or the link below for the Operational Briefing, IAP, Maps, Check in Form, Extension/Crew Swap Forms, and Demob Forms, Evaluations, and Finance documents.
linktr.ee/MonumentFire

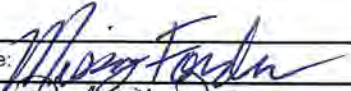
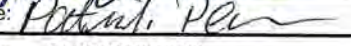
We know the hazards are still out there—please help us gather realtime information from the line about those hazards by filling in the form. Use the QR code or link to access the Hazard Inventory Tool <https://arca.is/0ifG5u>



Monument Communications
925-817-9155

Blank Page

INCIDENT OBJECTIVES (ICS 202)

| | | |
|--------------------------------------------------------------------------------------------------------------------------------------------------------------------------------------------------------------------------------------------------------------------------------------------------------------------------------------------------------------------------------------------------------------------------------------------------------------------------------------------------------------------------------------------------------------------------------------------------------------------------------------------------------------------------------------------------------------------------------------------------------------------------------------------------------------------------------------------------------------------------------------------------------------------------------------------------------------------------------------------------------------------------------------------------------------------------------------------------------------------------------------------------------------------------------------------------------------------------------------------------------------------------------------------------------------------------------------------------------------------------------------------------------------------------------------------------------------------------------------------------------------------------------------------------------------------------------------------------------------------------------------------------------------------------------------------------------------------------------------------------------------------------------------------------------------------------------------------------------------------------------------------------------------------------------------------------------------------------------------------------------------------------------------------------------------------------------------------------------------------------------------------------------------------------------------------------------------------------------------------------------------------------------------------------------------------------------------------------------------------------------------------------------------------------------------------------------------------------------------------------------------------------------------------------------------------------------------------------------------------------------------------------------------------------------------------------------------------------------------------------------------------------------------------------------------------------------------------------------------------------------------------------------------------------------------------------------------------------------------------------------------------------------------------------|-----------------------------------------------|---------------------------------------------------------------------------------------------------------|
| 1. Incident Name: | 2. Operational Period: DAY | |
| MONUMENT | Date/Time From: 09/26/2021 0700 SUN | Date/Time To: 09/26/2021 1900 SUN |
| 3. Objective(s): | | |
| <p>Leaders Intent</p> <ul style="list-style-type: none"> · Implement an aggressive full suppression strategy. Efforts will be made to minimize impacts to residences, critical infrastructure, and surrounding communities through the application of well-planned tactical responses. · Ensure all incident actions reflect a commitment to public, responder, and aviation safety through use of the risk management process. · Coordinate incident management activities with our requesting and cooperating agencies including suppression actions and support needs. · Treat all incident personnel, cooperators, and the public with dignity and respect creating a “no tolerance” atmosphere for harassment, alcohol, or illegal drug use. <p>Values of Concern</p> <ul style="list-style-type: none"> · Private property and infrastructure throughout the fire area, including the Highway 299 corridor, Junction City, Burnt Ranch, Trinity Village, Hayfork, and Hyampom Road. · Commercial timber on private industrial lands and public lands. · Natural resource values associated with the Trinity Alps Wilderness, designated wild and scenic rivers, and inventoried roadless areas. · Northern spotted owl habitat and habitat for anadromous fish (steelhead and salmon). · Recreation values associated with forest service campgrounds and trails. <p>Management Objectives</p> <ul style="list-style-type: none"> · Always provide for emergency personnel and public safety through the utilization of a deliberate risk-informed approach, with avenues for feedback from personnel. · Ensure COVID-19 precautions and best practices are met by following agency, team, state, and county guidance. · Minimize the threat of fire impacting private property, communities, businesses, and critical infrastructure. · Protect the values within the Trinity Alps Wilderness, the Trinity Wild and Scenic River corridor, inventoried roadless areas, and habitat for anadromous fish and other endangered and sensitive species. · Foster and enhance relationships with the public, cooperators, partner, and stakeholders. · Ensure coordinated, timely and accurate release of information to the public and land managers utilizing the full suite of platforms. · Maintain fiscal accountability by making good risk-informed decisions. <p>Operational Objectives</p> <ul style="list-style-type: none"> · Protect the values of concern identified above by utilizing direct attack and indirect attack to achieve the full suppression strategy. · Coordinate with resource advisors to minimize natural and cultural resource damage. Initiate suppression repair as appropriate. · Provide aviation resources for initial attack within the Temporary Flight Restriction area. | | |
| 4. Operational Period Command Emphasis: | | |
| ***LCES*** | | |
| General Situational Awareness: | | |
| DISCUSSION. Weak inversions are expected to break around 0900. Where smoke holds overnight, inversions should break around 1100. Winds will become westerly again this afternoon as we mix out. Temperatures continue to drop today, along with a gradual increase in humidity. Rainfall is still expected Monday and Tuesday, with the most likely time frame being early afternoon Monday through just after Midnight Tuesday | | |
| 7. Prepared by: MISSY FORDER | Position/Title: PLANNING SECTION CHIEF | Signature:  |
| 8. Approved by Incident Commander: | Name: PAT PEARSON | Signature:  |
| ICS 202 | IAP Page | Date/Time: 09/26/2021 2100 |

FINAL

Page 1 of 2


ORGANIZATION ASSIGNMENT LIST (ICS 203)

| | | | |
|----------------------------------------------------|------------------------------------------------------------------------------------------------------------------------------------------------|--------------------------------------------------------------------------------------------------------|-------------------------------------------|
| 1. Incident Name: | | 2. Operational Period: DAY | |
| MONUMENT | | Date/Time From: 09/26/2021 0700 SUN | Date/Time To: 09/26/2021 1900 SUN |
| 3. Incident Commander(s) and Command Staff: | | CHIEF LESLIE MORGAN; JANE ARTEAGA; CHRIS REVELS (T) | |
| IC/UC | MIKE DUEITT PAT PEARSON (T) | SUPPLY UNIT NINA DONLEY | |
| SAFETY OFFICER | TONY RIVERS; TOMMY HAWKINS; DAVID STONE | RECEIVING/DIST. MANAGER JAKE CLEVINGER | |
| INFORMATION OFFICER | BONNIE STRAWSER; CATHERINE HIBBARD (V) | FACILITIES UNIT MELINDA A AVNI | |
| LIAISON OFFICER | DAVE PARKER; PAUL STEVENS BIRK R ROSEMAN (T) | GROUND SUPPORT UNIT ANDY JOHNSON; SHANE STEVENS; PAT WRIGHT; BO SULLIVAN | |
| INFECTIOUS DISEASE SPECIALIST | SETH KIRK | COMMUNICATIONS UNIT BARRY STEARNS; JERRY PATRICK | |
| 4. Agency/Organization Representative(s): | | MEDICAL UNIT SETH KIRK; RON SANDLER; NICK ARNETT | |
| Agency/Organization | Name | SECURITY UNIT KAREN BRADFORD; TOM NEAL | |
| AGENCY ADMINISTRATOR | SHF AA: MICHAEL STANSBERRY; KARI OTTO (T) SRF AA: TED MCARTHUR | FOOD UNIT GARY EDWARDS | |
| AGENCY REPRESENTATIVE | SHF AREP: LESLIE AURIEMMO; TARA JONES; LUCAS GRAF SHF FIRE STAFF: KEVIN OSBORNE SRF AREP: MARK DEPERRO; JEN DYER SRF CHIEF 1: JOSH ELCHAMER | ORDERING MANAGER LISA MEEKINS; CHAD WILBERGER | |
| BLM AGENCY ADMINISTRATOR | JENNIFER MATA | SUPPORT BRANCH JOE WALKER | |
| BLM AGENCY REPRESENTATIVE | ROB WINKLER | 7. Operations Section: | |
| TRINITY COUNTY SHERIFFS | TIM SAXON NATE TRUJILLO | OPS SECTION CHIEF MARK A JAMIESON | |
| LEAD REAF/READ | GALEN ANDERSON | PLANNING OPS DAVID WALKER CHAD W COOK (T) | |
| 5. Planning Section: | | FIELD OPERATIONS MIKE DAVIS | |
| CHIEF | MISSY FORDER; DAVE BERENS | Branch 10 | |
| RESOURCES UNIT | JESSICA VALDEZ; RICHAUBUCHON; BRITTANYPHILLIPS | BRANCH DIRECTOR TROY FLOYD SHANE STURGILL (T) | |
| SITUATION UNIT | ERIC SCHMECKPEPER; SUSAN KETT | DIVISION/GROUP L/U KELLY S CORNWALL | |
| DOCUMENTATION UNIT | JOEY KOSIOROWSKI (V) | Branch 40 | |
| DEMOBILIZATION UNIT | DONNA THOMAS (V) | BRANCH DIRECTOR MATTHEW REIDY | |
| FIRE BEHAVIOR ANALYST | GREG TITUS | DIVISION/GROUP W AARON EDWARDS JR | |
| HUMAN RESOURCE SPECIALIST | KAREN HARTMAN | DIVISION/GROUP Y AARON EDWARDS JR | |
| TRAINING SPECIALIST | JIM MITCHEL (V) | DIVISION/GROUP Z JOEL D BURGETT | |
| GIS SPECIALIST | CHARLES BAILEY; CONNER MURNANE(T) | DIVISION/GROUP ROADS GROUP JOEL D BURGETT | |
| TECHNOLOGY SUPPORT SPECIALIST | JOE ASHBY; TONY FARMER | Branch 50 | |
| INCIDENT METEOROLOGIST | MARK LOEFFELBEIN; JOHN KEYES (T) | BRANCH DIRECTOR VICKY EDGE | |
| AIR RESOURCE ADVISOR | WENDY WAGNER; KRISTINA CLEMMONS | DIVISION/GROUP G CORY A DUTTON | |
| 6. Logistics Section: | | DIVISION/GROUP I JEREMY KOLAKS | |
| 9. Prepared By: | | DIVISION/GROUP K RYAN SHARPE | |
| Name: | JESSICA VALDEZ | 7b. Air Operations Branch: | |
| Position/Title: | RESL | AIR OPS BRANCH DIRECTOR JOHN MASON | |
| ICS 203 | IAP Page | AIR SUPPORT SUPERVISOR BART KICKLIGHTER | |
| Date/Time: | 09/25/2021 2100 | 8. Finance/Administration Section: | |
| | | CHIEF JAMES M MEREDITH; SANDRA MORRIS | |
| | | TIME UNIT KIMBERLY WINKLER | |
| | | PROCUREMENT UNIT SHAWN HENDRICKSON (V) | |
| | | COMPENSATION UNIT DIANE L LOWDER; ALICE BARNETTE | |
| | | Signature  | |

FINAL

Page 1 of 2

ORGANIZATION ASSIGNMENT LIST (ICS 203)

| | | | |
|--------------------------|-----------------------------|---------------------------------------------|------------------------------------------------------------------------------------------------------------|
| 1. Incident Name: | | 2. Operational Period: DAY | |
| MONUMENT | | Date/Time From: 09/26/2021 0700 SUN | Date/Time To: 09/26/2021 1900 SUN |
| COST UNIT | VERONICA DAVENPORT | | |
| IBA | CLARE KELLET | | |
| | | | |
| 9. Prepared By: | Name: JESSICA VALDEZ | Position/Title: RESL | Signature:  |
| ICS 203 | IAP Page | Date/Time: 09/25/2021 2100 | |

FINAL

Page 2 of 2



To: All Incident Personnel, Monument Fire

As Southern Area National Type I Incident Commander, I am committed to a policy of “zero tolerance” of inappropriate behavior during incident operations. Any form of harassment, discriminatory practices, or disrespectful behavior will not be tolerated. Known or reported acts will be dealt with appropriately.

I am particularly concerned about the perception that alcohol has a place in any of the Incident facilities. It is not appropriate to indulge in alcoholic beverages during any fire assignment.

The National Team from the Southern Region has a policy of “NO ALCOHOL” from the time of dispatch until the time of physical release from the Incident. Members of the Team voluntarily comply with this policy; all incident personnel will be expected to do so also.

We endorse, support, and expect an attitude of mutual respect for all Incident personnel and the public we serve. We also, endorse the attitude and work ethic that places “Safety First, every time on every Incident.” We expect nothing less.

/s/Mike Dueitt

Incident Commander

SAIMT 1



INCIDENT Weather Forecast : Monument



FORECAST NO: 54
PREDICTION FOR: Sun 0700 to Mon 0700
SHIFT DATE: Sep 26, 2021
FORECAST ISSUED: 2000 PDT Sep 25, 2021

FIRE NAME: Monument Fire
UNIT: SHF
SIGNED: **John Keyes**
 Incident Meteorologist Trainee 240-778-5281

DISCUSSION. Weak inversions are expected to break around 0900. Where smoke holds overnight, inversions should break around 1100. Winds will become westerly again this afternoon as we mix out. Temperatures continue to drop today, along with a gradual increase in humidity. Rainfall is still expected Monday and Tuesday, with the most likely time frame being early afternoon Monday through just after Midnight Tuesday.

TODAY: Mostly Sunny.
CWR: 0% **LAL:** 1 **Stability:** Unstable.

MAX TEMPERATURES: 84-89°F Ridges: 74-79°F
MIN HUMIDITY: 15-20%
MIXING HEIGHT: 300-600 ft AGL increasing to 5200-5700 ft AGL in the afternoon.
TRANSPORT WIND: Southwest 10-15 mph in the afternoon.

TONIGHT: Partly Clear.
CWR: 0% **LAL:** 1 **Stability:** Stable

MIN TEMPERATURES: 52-57°F Ridges: 50-55°F
MAX HUMIDITY: 65-75%
MIXING HEIGHT: Decreasing to 500-800 ft AGL overnight.
TRANSPORT WIND: South 5-10 mph.

| Prevailing 20-ft Winds (mph) | Day Shift 0700-1900 | Night Shift 1900-0700 |
|------------------------------|-----------------------------------------------------------------------------------------------------------------------|---------------------------------------------------------------------|
| Branch 10 | Downslope/Down-canyon 1-5 mph. SSW 4-7 mph Gusts 11 mph after 1100. WSW 5-9 mph Gusts 15 mph after 1500. | Downslope/Down-canyon 1-5 mph developing after 2000. |
| Branch 40 | Downslope/Down-canyon 2-6 mph. Becoming SW 5-8 mph Gusts 10 mph after 1100. WSW 6-11 mph Gusts 16 after 1500. | Downslope/Down-canyon 2-6 mph after 2100. |
| Branch 50 | Downslope/Down-canyon winds 2-7 mph. Becoming W 3-6 mph Gusts 10 mph after 1100. NW 6-12 mph Gusts 17 mph after 1500. | Becoming Downslope/Down-canyon winds 2-7 mph developing after 2200. |

EXTENDED OUTLOOK: Monday...Chance of rain showers. CWR: 70% Highs: 63-68. Min RH: 47-52%, Winds: Becoming SW 10-15 mph Gusts 20 mph. **Tuesday...**Chance of rain showers. CWR: 50% Highs: 62-67. Min RH: 35-40%, Winds: Becoming WNW 10-15 mph Gusts 20 mph. **Wednesday...**Mostly clear. Highs: 69-74. Min RH: 21-26%, Winds: Becoming WNW 5-10 mph Gusts 15 mph.

FIRE BEHAVIOR FORECAST

| | |
|---------------------------------------------------------|--------------------------------------------------------------------------------------|
| FORECAST NUMBER: 53 | TYPE OF FIRE: Wildland, Type 1 |
| FIRE NAME: Monument | OPERATIONAL PERIOD: Day Shift |
| DATE ISSUED: 09/25/2021 TIME ISSUED: 2000 | SHIFT DATE: Sunday, September 26, 2021 |
| UNIT: Shasta Trinity NF Six Rivers NF | SIGNED: Greg Titus, FBAN <i>Greg Titus</i> |

WEATHER SUMMARY:

See weather forecast in today's IAP
Local Thresholds – Watch Outs - see local pocket card →
 Temp > 89°, Min RH < 21%, RH recovery < 70%,
 Energy Release Component (ERC) > 55 and Burning Index (BI) > 38



FIRE BEHAVIOR:

GENERAL:

Fuels and Fire Behavior Advisory in effect for the fire area. [Link to Advisory](#)



Moderate to minimal fire behavior is expected today. There is still the potential for spotting outside control lines. Burning snags will present the opportunity for embers to drift across control lines and create new starts. Continued burning of heavy fuels.

Current Fire Environment Conditions:

Fine Dead Fuel Moisture = 4%, 1,000 Hour Fuel Moisture = 11%, Live Shrub Moisture = 82%
 ERC's remain above average

Fire Behavior based on maximum values for the fuel models shown, exposed fuels on steep slope.

| Fuel Model | Rate of Spread | Flame Length |
|-------------|-----------------|--------------|
| Grass/Shrub | 12 chains/hour | 5 feet |
| Timber | 1.2 chains/hour | 1 foot |

Spotting from ridge top torching trees up to **0.2 mile**. Probability of Ignition = **86%**
 In **one hour** new spot fires or ignitions can reach **9 acres**.

Specific Areas of Concern:

Division L – Fire spread still possible on most of the division. South and East aspects are of most concern. Watch for roll out in areas of steep slope.

Division W/Y/Z – Interior pockets will continue to burn. Heavy fuels will hold heat and burn. Roll out and snags along the line will continue to be an issue along containment lines.

Division I – Fire will continue to move to the southwest towards the confluence of the Trinity and New Rivers. Mostly creeping and smoldering fire, but short uphill runs are possible on the steeper south facing slopes. Heavy fuels will continue to burn out.

AIR OPERATIONS: Generally fair visibility. Valley bottoms will clear of smoke by mid-morning.

SAFETY:

Watch Out Situation 13 is emphasized today: **On a hillside where rolling material can ignite fuel below.** The slopes here are quite steep, and “roll out” is common. Continue to be alert for them.

Send any fire behavior observations or photos to: gregory.titus@fws.gov

Division/Group Assignment List (ICS 204 WF)
Controlled Unclassified Information//Basic

| | | | | | | |
|------------------------------------------------|---------|----------------------------------|--------------------------------------------------|----------------------------|-----------------------|-----------------------------------------------------------------|
| 1. Incident Name: | | | 3. | | | |
| MONUMENT | | | Branch: | | Division/Group | |
| 2. Operational Period: DAY | | | 10 | | L/U | |
| Date/Time From: 09/26/2021 0700 | SUN | Date/Time To: 09/26/2021 1900 | | | | |
| 4. Operations Personnel | | | | | | |
| OPERATIONS CHIEF | | MARK JAMIESON | | PLANNING OPERATIONS | | DAVID WALKER, CHAD COOK (T) |
| FIELD OPERATIONS | | MIKE DAVIS | | BRANCH DIRECTOR | | TROY FLOYD, SHANE STURGIL (T) |
| DIVISION/GROUP SUPERVISOR | | KELLY CORNWALL | | SAFETY OFFICER | | T. RIVERS, T. HAWKIINS, D. STONE, THAD HERZBERGER (SOF2) (T) |
| 5. Resources Assigned this Period | | | | | | |
| Strike Team / Task Force / Resource Designator | | LWD | Leader | Number Persons | Drop Off PT./Time | Pick Up PT./Time |
| O-1194.102 TFLD BONICICHI ^^ | | 09/29 | JESUS BONICICHI | 1 | WEAVERVILLE/0700 | WEAVERVILLE/1900 |
| O-1265 TFLD (T) DROUIN ^ | | 09/27 | TROY DROUIN | 1 | WEAVERVILLE/0700 | WEAVERVILLE/1900 |
| O-1524 TFLD (T) SCHWEDHELM ^ | | 09/28 | JOE SCHWEDHELM | 1 | WEAVERVILLE/0700 | WEAVERVILLE/1900 |
| O-262 HEQB CORDTZ ^^ | | 09/27 | ERIK CORDTZ | 1 | WEAVERVILLE/0700 | WEAVERVILLE/1900 |
| C-156 HC2 PVT BIRRUETA ^^ | | 09/28 | JOSE IBARRA | 20 | WEAVERVILLE/0700 | WEAVERVILLE/1900 |
| E-44 ENG3 JUNCTION CITY 2531 | | | JAMES DUNSDON (LOCAL VFD RESOURCE-CREW SWAPPING) | 3 | WEAVERVILLE/0700 | WEAVERVILLE/1900 |
| E-674 ENG3 BLACK RANGE ^^ | | 09/28 | TIMOTHY PEARSON | 3 | WEAVERVILLE/0700 | WEAVERVILLE/1900 |
| E-975 ENG3 BRUSH 10 ^ | | 09/29 | ZAC PEDERSEN | 4 | WEAVERVILLE/0700 | WEAVERVILLE/1900 |
| E-1041 ENG3 MISSOULA FIRE ^ | | 09/30 | JEREMY WILLIAMS | 3 | WEAVERVILLE/0700 | WEAVERVILLE/1900 |
| E-1039 ENG6 STAX FACTOR ^ | | 10/02 | JOHN HOELLERICH | 3 | WEAVERVILLE/0700 | WEAVERVILLE/1900 |
| E-24 WTS2 FORTNER EXCAVATION ^ | | 10/10 | JEFF SHORT | 1 | WEAVERVILLE/0700 | WEAVERVILLE/1900 |
| E-638 WTS2 GLENN'S TENS ^^ | | 10/11 | GLENN LAQUAGLIA | 1 | WEAVERVILLE/0700 | WEAVERVILLE/1900 |
| E-629 DOZ2 ROWBERRY ^^ | | 10/04 | JIM VARWIG | 2 | WEAVERVILLE/0700 | WEAVERVILLE/1900 |
| E-385 SKG2 LET-ER-BUCK ^ | | 09/26 | DARREN WARD | 2 | WEAVERVILLE/0700 | WEAVERVILLE/1900 |
| E-429 MAST HACKERS MACHINES ^^ | | 10/02 | JORDAN BENJAMIN | 2 | WEAVERVILLE/0700 | WEAVERVILLE/1900 |
| E-1054 EXCA2 BROWN EXCAVATION ^ | | 10/07 | MICHAEL DICKINSON | 2 | WEAVERVILLE/0700 | WEAVERVILLE/1900 |
| E-1056 EXCA2 DAVIS CORPORATION ^ | | 10/09 | JOSHUA BENDERS | 2 | WEAVERVILLE/0700 | WEAVERVILLE/1900 |
| S-21 PVT PUMPZILLA 2 TRINITY ^ | | 09/28 | SERGIO BETACOURT | 2 | WEAVERVILLE/0700 | WEAVERVILLE/1900 |
| 8. Division/Group Communication Summary | | | | | | |
| Function | Channel | RX Frequency N/W | RX Tone/NAC | TX Frequency N/W | TX Tone/NAC | Mode |
| COMMAND | 1 | 173.8125 N | 107.2 | 168.4750 N | 107.2 | M |
| TACTICAL | 9 | 166.7750 N | 107.2 | 166.7750 N | 107.2 | |
| AIR TO GROUND | 12 | 171.8625 N | | 171.8625 N | | |
| AIR TO GROUND | 13 | 171.0375 N | | 171.0375 N | | |
| 9. Prepared By (Resource Unit Leader) | | | Approved By (Planning Section Chief) | | Date | Time |
| RICH AUBUCHON | | | MISSY FORDER | | 09/25/2021 | 2100 |

Division/Group Assignment List (ICS 204 WF)
Controlled Unclassified Information//Basic

| | | | | | | |
|---------------------------------------------------------------------------------------------------------------------------------------------------------------------------------------------------------------------------------------------------------------------------------------------------------------------------------------------------------------------------------------------------------------------------------------------------------------------------------------------------------------------------------------------------------------------------------------------------------------------------------------------------------------------------------------------------------------------------------------------------------------------------------------------------------------------------------------------------------------|---------|----------------------------------|---------------------------------------------|----------------------------|-----------------------|-----------------------------------------------------------------|
| 1. Incident Name: | | | 3. | | | |
| MONUMENT | | | Branch: | | Division/Group | |
| 2. Operational Period: DAY | | | 10 | | L/U | |
| Date/Time From: 09/26/2021 0700 | SUN | Date/Time To: 09/26/2021 1900 | | | | |
| 4. Operations Personnel | | | | | | |
| OPERATIONS CHIEF | | MARK JAMIESON | | PLANNING OPERATIONS | | DAVID WALKER, CHAD COOK (T) |
| FIELD OPERATIONS | | MIKE DAVIS | | BRANCH DIRECTOR | | TROY FLOYD, SHANE STURGIL (T) |
| DIVISION/GROUP SUPERVISOR | | KELLY CORNWALL | | SAFETY OFFICER | | T. RIVERS, T. HAWKIINS, D. STONE, THAD HERZBERGER (SOF2) (T) |
| 5. Resources Assigned this Period | | | | | | |
| Strike Team / Task Force / Resource Designator | | LWD | Leader | Number Persons | Drop Off PT./Time | Pick Up PT./Time |
| O-1118 FMOD A&F ENTERPRISES ^^ | | 09/27 | FAUSTO RIVERA | 2 | WEAVERVILLE/0700 | WEAVERVILLE/1900 |
| O-1090 FAL1 SCHWARTZ ^^ | | 09/26 | THEODORE SCHWARTZ | 1 | WEAVERVILLE/0700 | WEAVERVILLE/1900 |
| O-1372 REAF | | 09/28 | DEVONIE E PLUMMER | 1 | WEAVERVILLE/0700 | WEAVERVILLE/1900 |
| O-1570 REAF | | 10/09 | MIKE V MILLAY | 1 | WEAVERVILLE/0700 | WEAVERVILLE/1900 |
| E-1005 EMPF TOMLINSON ^ | | 10/03 | KARI TOMLINSON | 1 | WEAVERVILLE/0700 | WEAVERVILLE/1900 |
| E-1006 EMTF CLIFTON ^ | | 10/02 | AMBER CLIFTON | 1 | WEAVERVILLE/0700 | WEAVERVILLE/1900 |
| E-1009 EMTF WIDLY ^ | | 10/02 | PRESCOTT WIDLY | 1 | WEAVERVILLE/0700 | WEAVERVILLE/1900 |
| O-1398 SOF2 (T) BAXLEY ^ | | 10/02 | ASHLEY BAXLEY | 1 | WEAVERVILLE/0700 | WEAVERVILLE/1900 |
| O-1430 SOFR (T) ADAMS ^ | | 10/02 | JUSTIN ADAMS | 1 | WEAVERVILLE/0700 | WEAVERVILLE/1900 |
| 6. Control Operations/Work Assignments: | | | | | | |
| <p>Task: Patrol handlines from the north edge of fire on Hobo Gulch Road to Backbone Ridge, and southern lines from East Fork Creek to Backbone Ridge. Secure fire edge along Backbone Ridge from northern handline to the west towards North Fork Trinity. Mop up eastern fire edge along East Fork Creek and Hobo Road. Use air support to moderate fire activity west of the North Fork of the Trinity River. Maintain structure defense operations.</p> <p>Purpose: Ensure that the current level of containment is not compromised. Increase the level of containment along the east flank of the fire. Ensure the continued protection of structures.</p> <p>End state: A containment objective to secure all fire lines on the division is met. Structure defense objectives are met and the threat to structures and private property is reduced.</p> | | | | | | |
| 7. Special Instructions: | | | | | | |
| 8. Division/Group Communication Summary | | | | | | |
| Function | Channel | RX Frequency N/W | RX Tone/NAC | TX Frequency N/W | TX Tone/NAC | Mode |
| COMMAND | 1 | 173.8125 N | 107.2 | 168.4750 N | 107.2 | M |
| TACTICAL | 9 | 166.7750 N | 107.2 | 166.7750 N | 107.2 | |
| AIR TO GROUND | 12 | 171.8625 N | | 171.8625 N | | |
| AIR TO GROUND | 13 | 171.0375 N | | 171.0375 N | | |
| 9. Prepared By (Resource Unit Leader) | | | Approved By (Planning Section Chief) | | Date | Time |
| RICH AUBUCHON | | | MISSY FORDER | | 09/25/2021 | 2100 |

Division/Group Assignment List (ICS 204 WF)
Controlled Unclassified Information//Basic

| | | | |
|---------------------------------------------|-------------------------------------------|---------------------------------|-----------------------------------------------------------------|
| 1. Incident Name: | | 3. | |
| MONUMENT | | Branch: 10 | Division/Group L/U |
| 2. Operational Period: DAY | | | |
| Date/Time From: 09/26/2021 0700 SUN | Date/Time To: 09/26/2021 1900 SUN | | |
| 4. Operations Personnel | | | |
| OPERATIONS CHIEF | MARK JAMIESON | PLANNING OPERATIONS | DAVID WALKER, CHAD COOK (T) |
| FIELD OPERATIONS | MIKE DAVIS | BRANCH DIRECTOR | TROY FLOYD, SHANE STURGIL (T) |
| DIVISION/GROUP SUPERVISOR | KELLY CORNWALL | SAFETY OFFICER | T. RIVERS, T. HAWKIINS, D. STONE, THAD HERZBERGER (SOF2) (T) |

7. Special Instructions:

Maintain communications with resources when entering or leaving Hobo Gulch Road. Watch for public driving on the East Fork Road. All resources traveling on Hobo Gulch Road will call out mile markers on assigned TAC channel. Work with REAFs for approval when planning work. Document work that is approved and completed within the wilderness boundary both on the map and with assigned REAFs. Consult a REAF or ARCH before any ground disturbance.

| 8. Division/Group Communication Summary | | | | | | |
|------------------------------------------------|---------|------------------|-------------|------------------|-------------|------|
| Function | Channel | RX Frequency N/W | RX Tone/NAC | TX Frequency N/W | TX Tone/NAC | Mode |
| COMMAND | 1 | 173.8125 N | 107.2 | 168.4750 N | 107.2 | M |
| TACTICAL | 9 | 166.7750 N | 107.2 | 166.7750 N | 107.2 | |
| AIR TO GROUND | 12 | 171.8625 N | | 171.8625 N | | |
| AIR TO GROUND | 13 | 171.0375 N | | 171.0375 N | | |

| | | | | | |
|----------------------------------------------|--|---------------------------------------------|--|-------------|-------------|
| 9. Prepared By (Resource Unit Leader) | | Approved By (Planning Section Chief) | | Date | Time |
| RICH AUBUCHON | | MISSY FORDER | | 09/25/2021 | 2100 |

Division/Group Assignment List (ICS 204 WF)
Controlled Unclassified Information//Basic

| | | | | | | |
|------------------------------------------------|---------|----------------------------------|---------------------------------------------|----------------------------|-----------------------|--------------------------------------------------------|
| 1. Incident Name: | | | 3. | | | |
| MONUMENT | | | Branch: | | Division/Group | |
| 2. Operational Period: DAY | | | 40 | | W | |
| Date/Time From: 09/26/2021 0700 | SUN | Date/Time To: 09/26/2021 1900 | | | | |
| 4. Operations Personnel | | | | | | |
| OPERATIONS CHIEF | | MARK JAMIESON | | PLANNING OPERATIONS | | DAVID WALKER, CHAD COOK (T) |
| FIELD OPERATIONS | | MIKE DAVIS | | BRANCH DIRECTOR | | MATT REIDY |
| DIVISION/GROUP SUPERVISOR | | AARON EDWARDS JR | | SAFETY OFFICER | | T. RIVERS, T. HAWKINS, D. STONE THAD HERSBERGER (T) |
| 5. Resources Assigned this Period | | | | | | |
| Strike Team / Task Force / Resource Designator | | LWD | Leader | Number Persons | Drop Off PT./Time | Pick Up PT./Time |
| C-177 HC2 PACIFIC COAST CONTRACTING ^^ | | 09/29 | JESSE MIRACLE | 20 | HAYFORK/0700 | HAYFORK/1900 |
| E-860 ENG3 PVT FIRESTORM 9911 ^^ | | 10/03 | WILLIAM NERBORNNE | 3 | HAYFORK/0700 | HAYFORK/1900 |
| E-792 ENG6 PVT ROCKY POINT ^^ | | 09/29 | DUSTY KREBSBACH | 3 | HAYFORK/0700 | HAYFORK/1900 |
| E-859 ENG6 PVT ATTACK ONE FIRE ^ | | 10/02 | JEREMY HURST | 3 | HAYFORK/0700 | HAYFORK/1900 |
| E-888 ENG6 PVT WESTERN FIRE ^^ | | 10/10 | DERRICK HOLDSTOCK (R&R 9/27-28) | 3 | HAYFORK/0700 | HAYFORK/1900 |
| E-971 ENG6 TIMBERLINE FIRE ^ | | 10/01 | DARREN NAMINGHA | 3 | HAYFORK/0700 | HAYFORK/1900 |
| WTS CA-SHF WTS 140 | | | ZACK JOHNSON (LOCAL FOREST RESOURCE) | 1 | HAYFORK/0700 | HAYFORK/1900 |
| E-22 WTS2 PVT CATTLELACK RANCH ^^ | | 09/26 | TAMMY ANDREW | 1 | HAYFORK/0700 | HAYFORK/1900 |
| E-160 WTS2 PVT WTS1 KDH ENTERPRISES ^^ | | 09/28 | KEVIN HORN | 1 | HAYFORK/0700 | HAYFORK/1900 |
| E-1050 CHIP2 ADKINS ^ | | 10/06 | RONALD ADKINS | 3 | HAYFORK/0700 | HAYFORK/1900 |
| E-1051 CHIP2 CUT WRIGHT ^ | | 10/05 | TODD WRIGHT | 3 | HAYFORK/0700 | HAYFORK/1900 |
| E-1055 EXC2 CATTANEO ^ | | 10/07 | ANTHONY CATTANEO | 2 | HAYFORK/0700 | HAYFORK/1900 |
| O-1207 FOBS CA MODER ^ | | 09/26 | SCOTT MODER | 1 | HAYFORK/0700 | HAYFORK/1900 |
| O-1395 SOF2 CARTER ^ | | 10/01 | DAVID CARTER | 1 | HAYFORK/0700 | HAYFORK/1900 |
| O-1318 EMTF LANDIS ^ | | 09/28 | DANIEL LANDIS | 1 | HAYFORK/0700 | HAYFORK/1900 |
| O-1487 EMPF BAIR | | 10/03 | BRIAN BAIR | 1 | HAYFORK/0700 | HAYFORK/1900 |
| 6. Control Operations/Work Assignments: | | | | | | |
| 8. Division/Group Communication Summary | | | | | | |
| Function | Channel | RX Frequency N/W | RX Tone/NAC | TX Frequency N/W | TX Tone/NAC | Mode |
| COMMAND | 2 | 171.5375 N | 107.2 | 164.8625 N | 107.2 | |
| COMMAND | 5 | 173.6500 N | 107.2 | 164.8125 N | 107.2 | |
| TACTICAL | 8 | 166.7250 N | 107.2 | 166.7250 N | 107.2 | |
| AIR TO GROUND | 12 | 171.8625 N | | 171.8625 N | | |
| AIR TO GROUND | 13 | 171.0375 N | | 171.0375 N | | |
| 9. Prepared By (Resource Unit Leader) | | | Approved By (Planning Section Chief) | | Date | Time |
| RICH AUBUCHON | | | MISSY FORDER | | 09/25/2021 | 2100 |

Division/Group Assignment List (ICS 204 WF)

Controlled Unclassified Information//Basic

| | | | | | | | |
|---------------------------------------------------------------------------------------------------------------------------------------------------------------------------------------------------------------------------------------------------------------------------------------------------------------------------------------------------------------------------------------------------------------------|---------|-------------------------------------------|---------------------------------------------|----------------------------|-------------|--------------------------------------------------------|-------------|
| 1. Incident Name: | | | | 3. | | | |
| MONUMENT | | | | Branch: | | Division/Group | |
| 2. Operational Period: DAY | | | | 40 | | W | |
| Date/Time From: 09/26/2021 0700 SUN | | Date/Time To: 09/26/2021 1900 SUN | | | | | |
| 4. Operations Personnel | | | | | | | |
| OPERATIONS CHIEF | | MARK JAMIESON | | PLANNING OPERATIONS | | DAVID WALKER, CHAD COOK (T) | |
| FIELD OPERATIONS | | MIKE DAVIS | | BRANCH DIRECTOR | | MATT REIDY | |
| DIVISION/GROUP SUPERVISOR | | AARON EDWARDS JR | | SAFETY OFFICER | | T. RIVERS, T. HAWKINS, D. STONE THAD HERSBERGER (T) | |
| 6. Control Operations/Work Assignments: | | | | | | | |
| <p>Task: Continue to patrol and mop-up as needed north of DP44 to division break. Continue chipping along 08 Road north to division break. Access division for suppression repair needs. Identify backhaul needs.</p> <p>Purpose: Ensure the fire stays within existing containment lines.</p> <p>End state: Fire is secured east of 3N08 Road and all values are protected. The division is in monitor status.</p> | | | | | | | |
| 7. Special Instructions: | | | | | | | |
| <p>Consult a REAF or ARCH before any ground disturbance.</p> <p>Line supply orders need to be placed through DIVS.</p> | | | | | | | |
| 8. Division/Group Communication Summary | | | | | | | |
| Function | Channel | RX Frequency N/W | RX Tone/NAC | TX Frequency N/W | TX Tone/NAC | Mode | |
| COMMAND | 2 | 171.5375 N | 107.2 | 164.8625 N | 107.2 | | |
| COMMAND | 5 | 173.6500 N | 107.2 | 164.8125 N | 107.2 | | |
| TACTICAL | 8 | 166.7250 N | 107.2 | 166.7250 N | 107.2 | | |
| AIR TO GROUND | 12 | 171.8625 N | | 171.8625 N | | | |
| AIR TO GROUND | 13 | 171.0375 N | | 171.0375 N | | | |
| 9. Prepared By (Resource Unit Leader) | | | Approved By (Planning Section Chief) | | | Date | Time |
| RICH AUBUCHON | | | MISSY FORDER | | | 09/25/2021 | 2100 |

Division/Group Assignment List (ICS 204 WF)
Controlled Unclassified Information//Basic

| | | | | | | |
|------------------------------------------------|-------------------------------------------|------------------|---------------------------------------------|----------------------------|-----------------------|----------------------------------------------------------------|
| 1. Incident Name: | | | 3. | | | |
| MONUMENT | | | Branch: | | Division/Group | |
| 2. Operational Period: DAY | | | 40 | | Y | |
| Date/Time From: 09/26/2021 0700 SUN | Date/Time To: 09/26/2021 1900 SUN | | | | | |
| 4. Operations Personnel | | | | | | |
| OPERATIONS CHIEF | | MARK JAMIESON | | PLANNING OPERATIONS | | DAVID WALKER, CHAD COOK (T) |
| FIELD OPERATIONS | | MIKE DAVIS | | BRANCH DIRECTOR | | MATT REIDY |
| DIVISION/GROUP SUPERVISOR | | AARON EDWARDS JR | | SAFETY OFFICER | | T. RIVERS, T. HAWKINS, D. STONE, THAD HERSBERGER (SOF2) (T) |
| 5. Resources Assigned this Period | | | | | | |
| Strike Team / Task Force / Resource Designator | | LWD | Leader | Number Persons | Drop Off PT./Time | Pick Up PT./Time |
| C-125 HC2 TRI CITIES ^^ | | 09/27 | JOSE SILVA | 20 | HAYFORK/0700 | HAYFORK/1900 |
| O-1283 SMOD COHO ^^ | | 10/04 | MICA BOOZE | 10 | HAYFORK/0700 | HAYFORK/1900 |
| O-1151 HEQB TURNER ^^ | | 10/07 | JACK TURNER (R&R 9/22-9/24. RETURN 9/25) | 1 | HAYFORK/0700 | HAYFORK/1900 |
| E-812 ENG4 PVT BLAZE RUNNERS ^ | | 09/30 | JAMES BURKE | 3 | HAYFORK/0700 | HAYFORK/1900 |
| E-981 ENG4 PEANUT PIE ^ | | 10/02 | MIKE KERN | 3 | HAYFORK/0700 | HAYFORK/1900 |
| E-1040 ENG4 ID HEATSEEKERS ^ | | 10/02 | WYATT JOHNSON | 3 | HAYFORK/0700 | HAYFORK/1900 |
| E-966 ENG6 DAYS ^ | | 10/02 | ADRIAN GUERRA | 3 | HAYFORK/0700 | HAYFORK/1900 |
| E-970 ENG6 MESCALERO TRIBE ^ | | 10/03 | WALLACE RICE | 3 | HAYFORK/0700 | HAYFORK/1900 |
| E-979 ENG6 MISSOULA CITY FIRE DEPT ^ | | 10/02 | | 2 | HAYFORK/0700 | HAYFORK/1900 |
| E-1032 ENG6 MCD JORDAN ENGINE 2602 ^ | | 10/02 | CHRISTOPHER WARWICK | 3 | HAYFORK/0700 | HAYFORK/1900 |
| E-71 WTS1 PVT NORTH STATE ^ | | 10/09 | WILLIAM YENTSCH | 1 | HAYFORK/0700 | HAYFORK/1900 |
| E-688 WTS2 PVT K.K.'S WATER SERVICE ^^ | | 09/29 | MIKE WOOD | 1 | HAYFORK/0700 | HAYFORK/1900 |
| E-835 WTT1 PIERSOLS FLAME CATCHERS ^ | | 09/28 | ASHER LARSON | 2 | HAYFORK/0700 | HAYFORK/1900 |
| E-484 DOZ2 PVT BROWN ^^ | | 09/28 | BARRY BROWN | 2 | HAYFORK/0700 | HAYFORK/1900 |
| E-32 MAST PVT EVANS RIGHT ^^ | | 10/03 | TEO GONZALEZ | 1 | HAYFORK/0700 | HAYFORK/1900 |
| O-25 FMOD HEADWATERS FORESTRY ^^ | | 10/06 | CHARLIE SEBASTIAN | 2 | HAYFORK/0700 | HAYFORK/1900 |
| O-1395 SOF2 CARTER ^ | | 10/01 | DAVID CARTER | 1 | HAYFORK/0700 | HAYFORK/1900 |
| E-881 EMPF GIBSON ^^ | | 10/04 | TOM GIBSON | 1 | HAYFORK/0700 | HAYFORK/1900 |
| 8. Division/Group Communication Summary | | | | | | |
| Function | Channel | RX Frequency N/W | RX Tone/NAC | TX Frequency N/W | TX Tone/NAC | Mode |
| COMMAND | 2 | 171.5375 N | 107.2 | 164.8625 N | 107.2 | |
| COMMAND | 5 | 173.6500 N | 107.2 | 164.8125 N | 107.2 | |
| TACTICAL | 11 | 168.2375 N | 107.2 | 168.2375 N | 107.2 | |
| AIR TO GROUND | 12 | 171.8625 N | | 171.8625 N | | |
| AIR TO GROUND | 13 | 171.0375 N | | 171.0375 N | | |
| 9. Prepared By (Resource Unit Leader) | | | Approved By (Planning Section Chief) | | Date | Time |
| RICH AUBUCHON | | | MISSY FORDER | | 09/25/2021 | 2100 |

Division/Group Assignment List (ICS 204 WF)
Controlled Unclassified Information//Basic

| | | | | | | | |
|---------------------------------------------------------------------------------------------------------------------------------------------------------------------------------------------------------------------------------------------------------------------------------------------------------------------------------------------------------------------------------------------------------------------------------------------------|---------|-------------------------------------------|---------------------------------------------|----------------------------|-------------|----------------------------------------------------------------|-------------|
| 1. Incident Name: | | | | 3. | | | |
| MONUMENT | | | | Branch: | | Division/Group | |
| 2. Operational Period: DAY | | | | 40 | | Y | |
| Date/Time From: 09/26/2021 0700 SUN | | Date/Time To: 09/26/2021 1900 SUN | | | | | |
| 4. Operations Personnel | | | | | | | |
| OPERATIONS CHIEF | | MARK JAMIESON | | PLANNING OPERATIONS | | DAVID WALKER, CHAD COOK (T) | |
| FIELD OPERATIONS | | MIKE DAVIS | | BRANCH DIRECTOR | | MATT REIDY | |
| DIVISION/GROUP SUPERVISOR | | AARON EDWARDS JR | | SAFETY OFFICER | | T. RIVERS, T. HAWKINS, D. STONE, THAD HERSBERGER (SOF2) (T) | |
| 6. Control Operations/Work Assignments: | | | | | | | |
| <p>Task: Continue to mop up north of DP 57 and along dozer line to Grassy Mountain. Continue fire repair on contingency line. Backhaul four pumps from Barr 717 ranch.</p> <p>Purpose: Secure lines, roads and mitigate safety hazards,.</p> <p>End state: Impacts to the Hyampom community are minimized and values at risk are protected. Maintain containment of fire east of Butler Creek Road, 3N21 Road, 3N08 Road to the Hyampom Road.</p> | | | | | | | |
| 7. Special Instructions: | | | | | | | |
| <p>Consult a REAF or ARCH before any ground disturbance.</p> <p>Utilize MIST tactics when safe to do so to minimize impacts to proposed roadless areas.</p> <p>Line supply orders need to be placed through DIVS.</p> | | | | | | | |
| 8. Division/Group Communication Summary | | | | | | | |
| Function | Channel | RX Frequency N/W | RX Tone/NAC | TX Frequency N/W | TX Tone/NAC | Mode | |
| COMMAND | 2 | 171.5375 N | 107.2 | 164.8625 N | 107.2 | | |
| COMMAND | 5 | 173.6500 N | 107.2 | 164.8125 N | 107.2 | | |
| TACTICAL | 11 | 168.2375 N | 107.2 | 168.2375 N | 107.2 | | |
| AIR TO GROUND | 12 | 171.8625 N | | 171.8625 N | | | |
| AIR TO GROUND | 13 | 171.0375 N | | 171.0375 N | | | |
| 9. Prepared By (Resource Unit Leader) | | | Approved By (Planning Section Chief) | | | Date | Time |
| RICH AUBUCHON | | | MISSY FORDER | | | 09/25/2021 | 2100 |

Division/Group Assignment List (ICS 204 WF)
Controlled Unclassified Information//Basic

| | | | | | | |
|---------------------------------------------------------------------------------------------------------------------------------|-------------------------------------------|------------------|---------------------------------------------|----------------------------|-----------------------|--------------------------------------------------------|
| 1. Incident Name: | | | 3. | | | |
| MONUMENT | | | Branch: | | Division/Group | |
| 2. Operational Period: DAY | | | 40 | | Z | |
| Date/Time From: 09/26/2021 0700 SUN | Date/Time To: 09/26/2021 1900 SUN | | | | | |
| 4. Operations Personnel | | | | | | |
| OPERATIONS CHIEF | | MARK JAMIESON | | PLANNING OPERATIONS | | DAVID WALKER, CHAD COOK (T) |
| FIELD OPERATIONS | | MIKE DAVIS | | BRANCH DIRECTOR | | MATT REIDY |
| DIVISION/GROUP SUPERVISOR | | JOE BURGETT | | SAFETY OFFICER | | T. RIVERS, T. HAWKINS, D. STONE THAD HERZBERGER (T) |
| 5. Resources Assigned this Period | | | | | | |
| Strike Team / Task Force / Resource Designator | | LWD | Leader | Number Persons | Drop Off PT./Time | Pick Up PT./Time |
| E-955 ENG3 ROCKY MTN SUPPRESSION ^ | | 09/28 | GARY RACITOT | 3 | HAYFORK/0700 | HAYFORK/1900 |
| E-986 ENG6 WORLAND ENGINE 62 ^ | | 10/01 | BEN GOMEZ | 3 | HAYFORK/0700 | HAYFORK/1900 |
| E-1012 WTS1 CATTLE LACK RANCH ^^ | | 10/03 | JIM GOLDIE | 1 | HAYFORK/0700 | HAYFORK/1900 |
| O-816 REAF ANDERSON ^^ | | 09/29 | GALEN ANDERSON | 1 | HAYFORK/0700 | HAYFORK/1900 |
| O-1372 REAF BLM PLUMMER | | 09/24 | DEVONIE PLUMMER | 1 | HAYFORK/0700 | HAYFORK/1900 |
| O-1319 EMTF ELLINGSON ^ | | 09/28 | STEVE ELLINGSON | 1 | HAYFORK/0700 | HAYFORK/1900 |
| O-1320 EMTF AGUIRRE ^ | | 09/28 | REMBERTO AGUIRRE | 1 | HAYFORK/0700 | HAYFORK/1900 |
| O-1395 SOF2 CARTER ^ | | 10/01 | DAVID CARTER | 1 | HAYFORK/0700 | HAYFORK/1900 |
| R & R | | | | | | |
| C-154 HC2 PACIFIC OASIS ^^ (R&R 9/23-26. RETURN 9/27) | | 10/10 | JACOB ZIEGLER | 20 | HAYFORK/0700 | HAYFORK/1900 |
| 6. Control Operations/Work Assignments: | | | | | | |
| Task: Mop up and patrol from DP 58 west to division Y/Z break. | | | | | | |
| Purpose: Maintain the fire's containment east of the proposed wilderness area. | | | | | | |
| End state: Maintain current fire perimeter south of Pattison Ridge, east of Pattison Peak Road, and north of Coral Bottom Road. | | | | | | |
| 7. Special Instructions: | | | | | | |
| Backhaul excess fire suppression equipment to nearest drop point. | | | | | | |
| 8. Division/Group Communication Summary | | | | | | |
| Function | Channel | RX Frequency N/W | RX Tone/NAC | TX Frequency N/W | TX Tone/NAC | Mode |
| COMMAND | 2 | 171.5375 N | 107.2 | 164.8625 N | 107.2 | |
| COMMAND | 5 | 173.6500 N | 107.2 | 164.8125 N | 107.2 | |
| TACTICAL | 9 | 166.7750 N | 107.2 | 166.7750 N | 107.2 | |
| AIR TO GROUND | 12 | 171.8625 N | | 171.8625 N | | |
| AIR TO GROUND | 13 | 171.0375 N | | 171.0375 N | | |
| 9. Prepared By (Resource Unit Leader) | | | Approved By (Planning Section Chief) | | Date | Time |
| RICH AUBUCHON | | | MISSY FORDER | | 09/25/2021 | 2100 |

Division/Group Assignment List (ICS 204 WF)
Controlled Unclassified Information//Basic

| | | | | | | |
|---------------------------------------------------------------------------------------------------------------|---------|--------------------------------------|---------------------------------------------|----------------------------|-----------------------|---------------------------------------------------------------|
| 1. Incident Name: | | | 3. | | | |
| MONUMENT | | | Branch: | | Division/Group | |
| 2. Operational Period: DAY | | | | | ROAD GROUP | |
| Date/Time From: 09/26/2021 0700 SUN | | Date/Time To: 09/26/2021 1900 SUN | | | | |
| 4. Operations Personnel | | | | | | |
| OPERATIONS CHIEF | | MARK JAMIESON | | PLANNING OPERATIONS | | DAVID WALKER, CHAD COOK (T) |
| FIELD OPERATIONS | | MIKE DAVIS | | BRANCH DIRECTOR | | MATT REIDY |
| DIVISION/GROUP SUPERVISOR | | JOE BURGETT | | SAFETY OFFICER | | T. RIVERS, T. HAWKINS, D. STONE THAD HERZBERGER (SOF2) (T) |
| 5. Resources Assigned this Period | | | | | | |
| Strike Team / Task Force / Resource Designator | | LWD | Leader | Number Persons | Drop Off PT./Time | Pick Up PT./Time |
| O-1307 TFLD (T) DOMINI ^ | | 09/27 | HAN DOMINI | 1 | HAYFORK/0700 | HAYFORK/1900 |
| O-1538 HEQB LOSCUDO ^ | | 10/09 | SEAN LOSCUDO | 1 | HAYFORK/0700 | HAYFORK/1900 |
| C-155 HC2IA FIRESTORM 15A | | 10/09 | BENJAMIN PAVAN | 19 | HAYFORK/0700 | HAYFORK/1900 |
| E-999 ENG3 SRF 341 ^ | | 09/29 | CHRIS YARBROUGH | 5 | HAYFORK/0700 | HAYFORK/1900 |
| E-833 SKG2 PVT MILLER ^^ | | 09/30 | MICHAEL COX | 2 | HAYFORK/0700 | HAYFORK/1900 |
| E-771 SKG2 HART VENTURES ^ | | 09/27 | DAVE FISH | 1 | HAYFORK/0700 | HAYFORK/1900 |
| E-1048 CHIP2 GOD AND COUNTRY TREE SERVICE ^ | | 10/07 | ALEX KNOTT | 3 | HAYFORK/0700 | HAYFORK/1900 |
| E-829 EXCA HART TRUCKING ^^ | | 10/11 | CHANCE HART | 2 | HAYFORK/0700 | HAYFORK/1900 |
| O-1119 FMOD PVT TD FALLERS ^^ | | 10/07 | TRAVIS DAVANT | 2 | HAYFORK/0700 | HAYFORK/1900 |
| O-1382 FMOD UNDERDOG TIMBER ^ | | 10/01 | RICHARD BROWN | 2 | HAYFORK/0700 | HAYFORK/1900 |
| O-1383 FMOD PACIFIC RIDGELINE ^ | | 10/02 | ADAM MILLER | 2 | HAYFORK/0700 | HAYFORK/1900 |
| O-1296 FAL1 PVT A&F ENTERPRISES ^ | | 10/03 | ALLAN HOPKINS | 1 | HAYFORK/0700 | HAYFORK/1900 |
| O-1076 FAL1 PVT NZ FALLERS ^ | | 10/04 | HOMER BENNETT | 1 | HAYFORK/0700 | HAYFORK/1900 |
| 6. Control Operations/Work Assignments: | | | | | | |
| Task: Mitigate hazard trees along the Hyampom Road and clear roll-out debris and place in stock piles. | | | | | | |
| Purpose: To reduce hazards along roads, to provide safe public access. | | | | | | |
| End state: Hyampom Road is clear and safe for public and firefighter travel with no concerns or restrictions. | | | | | | |
| 7. Special Instructions: | | | | | | |
| 8. Division/Group Communication Summary | | | | | | |
| Function | Channel | RX Frequency N/W | RX Tone/NAC | TX Frequency N/W | TX Tone/NAC | Mode |
| COMMAND | 2 | 171.5375 N | 107.2 | 164.8625 N | 107.2 | |
| TACTICAL | 6 | 168.0500 N | 107.2 | 168.0500 N | 107.2 | |
| AIR TO GROUND | 12 | 171.8625 N | | 171.8625 N | | |
| AIR TO GROUND | 13 | 171.0375 N | | 171.0375 N | | |
| 9. Prepared By (Resource Unit Leader) | | | Approved By (Planning Section Chief) | | Date | Time |
| RICH AUBUCHON | | | MISSY FORDER | | 09/25/2021 | 2100 |

Division/Group Assignment List (ICS 204 WF)
Controlled Unclassified Information//Basic

| | | | |
|------------------------------------|-----|----------------------------------|-----------------------|
| 1. Incident Name: | | 3. | |
| MONUMENT | | Branch: | Division/Group |
| 2. Operational Period: DAY | | | |
| Date/Time From: 09/26/2021 0700 | SUN | Date/Time To: 09/26/2021 1900 | SUN |
| ROAD GROUP | | | |

| 4. Operations Personnel | | | |
|----------------------------------|---------------|----------------------------|---------------------------------------------------------------|
| OPERATIONS CHIEF | MARK JAMIESON | PLANNING OPERATIONS | DAVID WALKER, CHAD COOK (T) |
| FIELD OPERATIONS | MIKE DAVIS | BRANCH DIRECTOR | MATT REIDY |
| DIVISION/GROUP SUPERVISOR | JOE BURGETT | SAFETY OFFICER | T. RIVERS, T. HAWKINS, D. STONE THAD HERZBERGER (SOF2) (T) |

7. Special Instructions:
 Consult a REAF or ARCH before any ground disturbance.

| 8. Division/Group Communication Summary | | | | | | |
|------------------------------------------------|---------|---------------------------------------------|-------------|------------------|-------------|------|
| Function | Channel | RX Frequency N/W | RX Tone/NAC | TX Frequency N/W | TX Tone/NAC | Mode |
| COMMAND | 2 | 171.5375 N | 107.2 | 164.8625 N | 107.2 | |
| TACTICAL | 6 | 168.0500 N | 107.2 | 168.0500 N | 107.2 | |
| AIR TO GROUND | 12 | 171.8625 N | | 171.8625 N | | |
| AIR TO GROUND | 13 | 171.0375 N | | 171.0375 N | | |
| 9. Prepared By (Resource Unit Leader) | | Approved By (Planning Section Chief) | | Date | Time | |
| RICH AUBUCHON | | MISSY FORDER | | 09/25/2021 | 2100 | |

Division/Group Assignment List (ICS 204 WF)
Controlled Unclassified Information//Basic

| | | | | | | |
|------------------------------------------------------|---------|---------------------------------------|---------------------------------------------|----------------------------|-----------------------|------------------------------------------------------------|
| 1. Incident Name: | | | 3. | | | |
| MONUMENT | | | Branch: | | Division/Group | |
| 2. Operational Period: DAY | | | 50 | | G | |
| Date/Time From: 09/26/2021 0700 | SUN | Date/Time To: 09/26/2021 1900 | | | | |
| 4. Operations Personnel | | | | | | |
| OPERATIONS CHIEF | | MARK JAMIESON | | PLANNING OPERATIONS | | DAVID WALKER CHAD COOK (T) |
| FIELD OPERATIONS | | MIKE DAVIS | | BRANCH DIRECTOR | | VICKY EDGE |
| DIVISION/GROUP SUPERVISOR | | CORY DUTTON PEARSALL "JOE DAN" (T) | | SAFETY OFFICER | | T. RIVERS; T. HAWKINS; D. STONE; T. HERZBERGER SOF2 (T) |
| 5. Resources Assigned this Period | | | | | | |
| Strike Team / Task Force / Resource Designator | | LWD | Leader | Number Persons | Drop Off PT./Time | Pick Up PT./Time |
| TFLD | | 09/26 | MICHAEL O'BRIEN | 1 | WILLOW CREEK /0700 | WILLOW CREEK /1900 |
| O-1453 TFLD USFS HALL (T) ^ | | 10/01 | WILLIAM HALL | 1 | WILLOW CREEK /0700 | WILLOW CREEK /1900 |
| O-1061 HEQB BLM MOYLAN ^ | | 10/03 | TYLER MOYLAN | 1 | WILLOW CREEK /0700 | WILLOW CREEK /1900 |
| O-1165 HEQB FWS WILSON ^^ | | 09/30 | BARTHOLOMEW WILSON | 1 | WILLOW CREEK /0700 | WILLOW CREEK /1900 |
| C-203 HC2 PVT PACIFIC OASIS ^ | | 10/04 | WILLIAM DODD | 20 | WILLOW CREEK /0700 | WILLOW CREEK /1900 |
| E-397 ENG2 CA-HBV HAWKINS BAR 4123 | | 09/27 | TODD WRIGHT | 4 | WILLOW CREEK /0700 | WILLOW CREEK /1900 |
| E-967 ENG3 USFS CA-SHF-373 ^ | | 09/29 | LOGAN GRESS | 5 | WILLOW CREEK /0700 | WILLOW CREEK /1900 |
| E-1010 ENG3 BLM 8332 ^ | | 09/29 | KYLE KRACHE | 4 | WILLOW CREEK /0700 | WILLOW CREEK /1900 |
| E-1026 ENG3 AZ-MOV-BR-813 ^ | | 10/01 | MIKE MCDONLD | 4 | WILLOW CREEK /0700 | WILLOW CREEK /1900 |
| E-974 ENG4 PVT NAT W.F. ^ | | 10/01 | JOSH SCHMIDT | 3 | WILLOW CREEK /0700 | WILLOW CREEK /1900 |
| E-977 ENG4 PVT H.B. FORESTRY ^ | | 09/30 | MICHAEL MISEK | 3 | WILLOW CREEK /0700 | WILLOW CREEK /1900 |
| E-987 ENG4 PVT RED TRUCK WILDFIRE ^ | | 09/29 | NICK CARNEY | 3 | WILLOW CREEK /0700 | WILLOW CREEK /1900 |
| E-973 ENG5 HIGH COUNTRY ^ | | 10/01 | MARIN HERBERT | 3 | WILLOW CREEK /0700 | WILLOW CREEK /1900 |
| E-1011 ENG5 PVT A&H FORESTRY ^ | | 09/29 | DANIEL SAMS | 3 | WILLOW CREEK /0700 | WILLOW CREEK /1900 |
| E-950 ENG6 PVT TIMMERMANN WILDLAND SERVICES LLC ^ | | 10/03 | JEREMIAH VAN BLACK | 3 | WILLOW CREEK /0700 | WILLOW CREEK /1900 |
| E-978 ENG6 PVT OR WOOD ^ | | 09/30 | JESSICA WILCOX | 3 | WILLOW CREEK /0700 | WILLOW CREEK /1900 |
| 8. Division/Group Communication Summary | | | | | | |
| Function | Channel | RX Frequency N/W | RX Tone/NAC | TX Frequency N/W | TX Tone/NAC | Mode |
| COMMAND | 4 | 173.5000 N | 107.2 | 165.8125 N | 107.2 | |
| COMMAND | 5 | 173.6500 N | 107.2 | 164.8125 N | 107.2 | |
| TACTICAL | 10 | 168.2500 N | 107.2 | 168.2500 N | 107.2 | |
| AIR TO GROUND | 12 | 171.8625 N | | 171.8625 N | | |
| AIR TO GROUND | 13 | 171.0375 N | | 171.0375 N | | |
| 9. Prepared By (Resource Unit Leader) | | | Approved By (Planning Section Chief) | | Date | Time |
| JESSICA VALDEZ | | | MISSY FORDER | | 09/25/2021 | 2100 |

Division/Group Assignment List (ICS 204 WF)
Controlled Unclassified Information//Basic

| | | | | | | |
|---------------------------------------------------|---------|-------------------------------------------|---------------------------------------------|---------------------------------|---------------------------------------|------------------------------------------------------------|
| 1. Incident Name: | | | | 3. | | |
| MONUMENT | | | | Branch: 50 | Division/Group G | |
| 2. Operational Period: DAY | | | | | | |
| Date/Time From: 09/26/2021 0700 SUN | | Date/Time To: 09/26/2021 1900 SUN | | | | |
| 4. Operations Personnel | | | | | | |
| OPERATIONS CHIEF | | MARK JAMIESON | | PLANNING OPERATIONS | | DAVID WALKER CHAD COOK (T) |
| FIELD OPERATIONS | | MIKE DAVIS | | BRANCH DIRECTOR | | VICKY EDGE |
| DIVISION/GROUP SUPERVISOR | | CORY DUTTON PEARSALL "JOE DAN" (T) | | SAFETY OFFICER | | T. RIVERS; T. HAWKINS; D. STONE; T. HERZBERGER SOF2 (T) |
| 5. Resources Assigned this Period | | | | | | |
| Strike Team / Task Force / Resource Designator | | LWD | Leader | Number Persons | Drop Off PT./Time | Pick Up PT./Time |
| E-984 ENG6 PVT FIRE CONTROL ENGINE ^ | | 10/01 | PAUL FUCGS | 3 | WILLOW CREEK /0700 | WILLOW CREEK /1900 |
| E-988 ENG6 SD GPC INTERIOR ^ | | 10/02 | AUSTIN STOVER | 4 | WILLOW CREEK /0700 | WILLOW CREEK /1900 |
| E-1024 ENG6 USFS UT-ASF 611 ^ | | 10/01 | ZACHARY BELGE | 8 | WILLOW CREEK /0700 | WILLOW CREEK /1900 |
| E-32 WTS1 PVT DUST BUST 32 ^ | | 10/07 | JOSH JOHNSTON | 1 | WILLOW CREEK /0700 | WILLOW CREEK /1900 |
| E-686 WTS1 PVT GLENNS TENS ^ | | 10/15 | CHRIS IORIO (CREW SWAP ON 09/30-10/1) | 1 | WILLOW CREEK /0700 | WILLOW CREEK /1900 |
| E-384 WTT2 CA HAWKINS BAR 4142 | | | KEN WARD | 1 | WILLOW CREEK /0700 | WILLOW CREEK /1900 |
| E-949 DOZ2 USFS DOZER 29 ^ | | 09/27 | CORY CAMARA | 1 | WILLOW CREEK /0700 | WILLOW CREEK /1900 |
| E-430 MAST PVT BLACK RNG ^ | | 10/01 | BRANDON SHEPPARD | 2 | WILLOW CREEK /0700 | WILLOW CREEK /1900 |
| E-831 CHIP PVT BIG BARK 831 ^ | | 10/05 | TJ HINER | 3 | WILLOW CREEK /0700 | WILLOW CREEK /1900 |
| E-843 EMTF BUCHERT ^^ | | 10/09 | JACOB BUCHERT | 1 | WILLOW CREEK /0700 | WILLOW CREEK /1900 |
| E-997 EMTF CAPPS ^ | | 09/29 | LARISSA CAPPS | 1 | WILLOW CREEK /0700 | WILLOW CREEK /1900 |
| O-805 REAF USFS ^ | | 09/26 | BRENNA MONTAGNE | 1 | WILLOW CREEK /0700 | WILLOW CREEK /1900 |
| O-816 REAF | | 09/29 | GALEN D ANDERSON | 1 | WILLOW CREEK /0700 | WILLOW CREEK /1900 |
| O-1252 SOF2 | | 09/27 | THOMAS C NASH | 1 | WILLOW CREEK /0700 | WILLOW CREEK /1900 |
| O-1450 SOFR | | 10/02 | KEVIN PFISTER | 1 | WILLOW CREEK /0700 | WILLOW CREEK /1900 |
| 6. Control Operations/Work Assignments: | | | | | | |
| 8. Division/Group Communication Summary | | | | | | |
| Function | Channel | RX Frequency N/W | RX Tone/NAC | TX Frequency N/W | TX Tone/NAC | Mode |
| COMMAND | 4 | 173.5000 N | 107.2 | 165.8125 N | 107.2 | |
| COMMAND | 5 | 173.6500 N | 107.2 | 164.8125 N | 107.2 | |
| TACTICAL | 10 | 168.2500 N | 107.2 | 168.2500 N | 107.2 | |
| AIR TO GROUND | 12 | 171.8625 N | | 171.8625 N | | |
| AIR TO GROUND | 13 | 171.0375 N | | 171.0375 N | | |
| 9. Prepared By (Resource Unit Leader) | | | Approved By (Planning Section Chief) | | Date | Time |
| JESSICA VALDEZ | | | MISSY FORDER | | 09/25/2021 | 2100 |

Division/Group Assignment List (ICS 204 WF)

Controlled Unclassified Information//Basic

| | | | | | | |
|---------------------------------------------------------------------------------------------------------------------------------------------------------------------------------------------------------------------------------------------------------------------------------------------------------------------------------------------------------------------------------------------------------------------------------------------------------------------------------------------------------------------------------------------------------------------------------------------------------------------------------------------------------------------------------------------------------------|---------|-------------------------------------------|---------------------------------------------|----------------------------|-----------------------|------------------------------------------------------------|
| 1. Incident Name: | | | 3. | | | |
| MONUMENT | | | Branch: | | Division/Group | |
| 2. Operational Period: DAY | | | 50 | | G | |
| Date/Time From: 09/26/2021 0700 SUN | | Date/Time To: 09/26/2021 1900 SUN | | | | |
| 4. Operations Personnel | | | | | | |
| OPERATIONS CHIEF | | MARK JAMIESON | | PLANNING OPERATIONS | | DAVID WALKER CHAD COOK (T) |
| FIELD OPERATIONS | | MIKE DAVIS | | BRANCH DIRECTOR | | VICKY EDGE |
| DIVISION/GROUP SUPERVISOR | | CORY DUTTON PEARSALL "JOE DAN" (T) | | SAFETY OFFICER | | T. RIVERS; T. HAWKINS; D. STONE; T. HERZBERGER SOF2 (T) |
| 6. Control Operations/Work Assignments: | | | | | | |
| <p>Task: Patrol and mop-up from DP 50 north along the N23 and 60 roads to DP 61 at Fredricks Ridge. Patrol by air from DP 61 at the Trinity River north along the New River drainage to DP 210 at Five Waters. Continue to improve contingency lines north of the Trinity River. Continue structure defense measures in and around the Trinity Village area. Identify backhaul in collector and pull excess equipment.</p> <p>Purpose: Keep fire within the existing footprint east of the Trinity River and prepare for structure defense measures in and around Trinity Village.</p> <p>End state: Minimize fire impacts to the 299 corridors. Protect life and property in and around Trinity Village.</p> | | | | | | |
| 7. Special Instructions: | | | | | | |
| Support Division I | | | | | | |
| 8. Division/Group Communication Summary | | | | | | |
| Function | Channel | RX Frequency N/W | RX Tone/NAC | TX Frequency N/W | TX Tone/NAC | Mode |
| COMMAND | 4 | 173.5000 N | 107.2 | 165.8125 N | 107.2 | |
| COMMAND | 5 | 173.6500 N | 107.2 | 164.8125 N | 107.2 | |
| TACTICAL | 10 | 168.2500 N | 107.2 | 168.2500 N | 107.2 | |
| AIR TO GROUND | 12 | 171.8625 N | | 171.8625 N | | |
| AIR TO GROUND | 13 | 171.0375 N | | 171.0375 N | | |
| 9. Prepared By (Resource Unit Leader) | | | Approved By (Planning Section Chief) | | Date | Time |
| JESSICA VALDEZ | | | MISSY FORDER | | 09/25/2021 | 2100 |

Division/Group Assignment List (ICS 204 WF)
Controlled Unclassified Information//Basic

| | | | | | | |
|---------------------------------------------------|---------|----------------------------------|---------------------------------------------|----------------------------|-----------------------|-----------------------------------------------------------|
| 1. Incident Name: | | | 3. | | | |
| MONUMENT | | | Branch: | | Division/Group | |
| 2. Operational Period: DAY | | | 50 | | I | |
| Date/Time From: 09/26/2021 0700 | SUN | Date/Time To: 09/26/2021 1900 | | | | |
| 4. Operations Personnel | | | | | | |
| OPERATIONS CHIEF | | MARK JAMIESON | | PLANNING OPERATIONS | | DAVID WALKER CHAD COOK (T) |
| FIELD OPERATIONS | | MIKE DAVIS | | BRANCH DIRECTOR | | VICKY EDGE |
| DIVISION/GROUP SUPERVISOR | | JEREMY KOLAKS | | SAFETY OFFICER | | T. RIVERS; T. HAWKINS; D. STONE T. HERZBERGER SOF2 (T) |
| 5. Resources Assigned this Period | | | | | | |
| Strike Team / Task Force / Resource Designator | | LWD | Leader | Number Persons | Drop Off PT./Time | Pick Up PT./Time |
| O-1331 TFLD HOULE ^ | | 09/28 | LENNY HOULE | 1 | WILLOW CREEK/0700 | WILLOW CREEK/1900 |
| O-1369 TFLD USFS YARROW ^ | | 09/30 | BRIAN YARROW | 1 | WILLOW CREEK/0700 | WILLOW CREEK/1900 |
| O-1370 TFLD (T) USFS WOOD ^ | | 09/30 | SCOTT WOOD | 1 | WILLOW CREEK/0700 | WILLOW CREEK/1900 |
| C-176 HC2 PVT JD FORESTRY 176 ^^ | | 10/01 | HECTOR GONZALES | 20 | WILLOW CREEK/0700 | WILLOW CREEK/1900 |
| O-1282 WFM2 USFS ESCONDIDIO ^ | | 09/27 | BRENT CORKISH | 5 | WILLOW CREEK/0700 | WILLOW CREEK/1900 |
| O-1285 SMOD USFS CHEVELON ^ | | 09/27 | STEVE FAIRBANK | 9 | WILLOW CREEK/0700 | WILLOW CREEK/1900 |
| E-890 ENG3 PVT OUTBACK 890 ^^ | | 09/29 | DAMON ANDERSON | 3 | WILLOW CREEK/0700 | WILLOW CREEK/1900 |
| E-948 ENG3 USFS SFS SHASTA 313 ^ | | 09/26 | KENNETH VAUGHN | 5 | WILLOW CREEK/0700 | WILLOW CREEK/1900 |
| E-174 ENG5 PVT MONTROSE ^^ | | 10/03 | DIEGO ALVAREZ | 3 | WILLOW CREEK/0700 | WILLOW CREEK/1900 |
| E-177 ENG6 PVT J3 CONTRACTING 177 ^ | | 10/03 | ANTHONY PAVLIC | 3 | WILLOW CREEK/0700 | WILLOW CREEK/1900 |
| E-318 ENG6 PVT STARKCORP 318 ^ | | 09/29 | CODY SHIPP | 3 | WILLOW CREEK/0700 | WILLOW CREEK/1900 |
| E-33 WTS2 COLUMBUS 33 ^ | | 10/06 | JOSH WISEMAN | 1 | WILLOW CREEK/0700 | WILLOW CREEK/1900 |
| E-689 WTT2 AZ PEEPLES VALLEY FIRE ^ | | 09/28 | RONNIE J HERNANDEZ | 1 | WILLOW CREEK/0700 | WILLOW CREEK/1900 |
| E-842 WTT2 CO NORTHWEST PFD ^ | | 09/29 | GREGG HOFFMAN | 2 | WILLOW CREEK/0700 | WILLOW CREEK/1900 |
| O-655 FMOD PVT TREE GUYS ^ | | 09/29 | NICK LOESCH | 2 | WILLOW CREEK/0700 | WILLOW CREEK/1900 |
| O-1381 FMOD PVT PACIFIC RIDGE FALLERS ^ | | 10/01 | GABRIEL SOTELA | 2 | WILLOW CREEK/0700 | WILLOW CREEK/1900 |
| O-1390 FELB USFS BLAIR ^ | | 10/01 | DUSTIN BLAIR | 1 | WILLOW CREEK/0700 | WILLOW CREEK/1900 |
| O-966 FELB (T) USFS MUNK ^ | | 10/03 | ZAK MUNK | 1 | WILLOW CREEK/0700 | WILLOW CREEK/1900 |
| 8. Division/Group Communication Summary | | | | | | |
| Function | Channel | RX Frequency N/W | RX Tone/NAC | TX Frequency N/W | TX Tone/NAC | Mode |
| TACTICAL | 7 | 168.6000 N | 107.2 | 168.6000 N | 107.2 | |
| COMMAND | 4 | 173.5000 N | 107.2 | 165.8125 N | 107.2 | |
| COMMAND | 5 | 173.6500 N | 107.2 | 164.8125 N | 107.2 | |
| AIR TO GROUND | 12 | 171.8625 N | | 171.8625 N | | |
| AIR TO GROUND | 13 | 171.0375 N | | 171.0375 N | | |
| 9. Prepared By (Resource Unit Leader) | | | Approved By (Planning Section Chief) | | Date | Time |
| JESSICA VALDEZ | | | MISSY FORDER | | 09/25/2021 | 2100 |

Division/Group Assignment List (ICS 204 WF)

Controlled Unclassified Information//Basic

| | | | | | | |
|-------------------------------------------------------------------------------------------------------------------------------------------------------------------------------------------------------------|---------|-------------------------------------------|---------------------------------------------|----------------------------|-----------------------|-----------------------------------------------------------|
| 1. Incident Name: | | | 3. | | | |
| MONUMENT | | | Branch: | | Division/Group | |
| 2. Operational Period: DAY | | | 50 | | I | |
| Date/Time From: 09/26/2021 0700 SUN | | Date/Time To: 09/26/2021 1900 SUN | | | | |
| 4. Operations Personnel | | | | | | |
| OPERATIONS CHIEF | | MARK JAMIESON | | PLANNING OPERATIONS | | DAVID WALKER CHAD COOK (T) |
| FIELD OPERATIONS | | MIKE DAVIS | | BRANCH DIRECTOR | | VICKY EDGE |
| DIVISION/GROUP SUPERVISOR | | JEREMY KOLAKS | | SAFETY OFFICER | | T. RIVERS; T. HAWKINS; D. STONE T. HERZBERGER SOF2 (T) |
| 5. Resources Assigned this Period | | | | | | |
| Strike Team / Task Force / Resource Designator | | LWD | Leader | Number Persons | Drop Off PT./Time | Pick Up PT./Time |
| E-863 REMS PVT ADVENTURE MEDICS ^^ | | 09/27 | KOEBY BENNETT | 4 | WILLOW CREEK/0700 | WILLOW CREEK/1900 |
| E-998 EMTF BOWLDS ^ | | 09/29 | AMBER BOWLDS | 1 | WILLOW CREEK/0700 | WILLOW CREEK/1900 |
| O-1315 EMPF CA MOLLMANN ^^ | | 09/27 | THOR MOLLMANN | 1 | WILLOW CREEK/0700 | WILLOW CREEK/1900 |
| O-1399 REAF SCHAFFNER ^ | | 09/26 | THERESA SCHAFFNER | 1 | WILLOW CREEK/0700 | WILLOW CREEK/1900 |
| O-1480 REAF BIA AUBREY ^ | | 10/01 | BILLY AUBREY | 1 | WILLOW CREEK/0700 | WILLOW CREEK/1900 |
| O-1252 SOF2 NPS NASH ^ | | 09/27 | TOM NASH (WORKING ON BOTH DIV I AND K) | 1 | WILLOW CREEK/0700 | WILLOW CREEK/1900 |
| 6. Control Operations/Work Assignments: | | | | | | |
| Task: Continue holding the Denny Road and monitor recently completed tactical firing area. Keep the Denny and Buyoff roads open (free of snags) for fire crews and residents to maintain access and egress. | | | | | | |
| Purpose: Keep fire in existing containment lines and out of Trinity Village. | | | | | | |
| End State: No further fire growth minimizing impact on the community of Trinity Village and the Highway 299 corridor. | | | | | | |
| 7. Special Instructions: | | | | | | |
| Consult a REAF or ARCH before ground disturbance. | | | | | | |
| 8. Division/Group Communication Summary | | | | | | |
| Function | Channel | RX Frequency N/W | RX Tone/NAC | TX Frequency N/W | TX Tone/NAC | Mode |
| TACTICAL | 7 | 168.6000 N | 107.2 | 168.6000 N | 107.2 | |
| COMMAND | 4 | 173.5000 N | 107.2 | 165.8125 N | 107.2 | |
| COMMAND | 5 | 173.6500 N | 107.2 | 164.8125 N | 107.2 | |
| AIR TO GROUND | 12 | 171.8625 N | | 171.8625 N | | |
| AIR TO GROUND | 13 | 171.0375 N | | 171.0375 N | | |
| 9. Prepared By (Resource Unit Leader) | | | Approved By (Planning Section Chief) | | Date | Time |
| JESSICA VALDEZ | | | MISSY FORDER | | 09/25/2021 | 2100 |

Division/Group Assignment List (ICS 204 WF)
Controlled Unclassified Information//Basic

| | | | | | | |
|----------------------------------------------------------------------------------------------------------------------------------------------------------------------------------------------------------------------------------------------------------------------------------------------------------------------------|---------|----------------------------------|---------------------------------------------|----------------------------|-----------------------|-----------------------------------------------------------|
| 1. Incident Name: | | | 3. | | | |
| MONUMENT | | | Branch: | | Division/Group | |
| 2. Operational Period: DAY | | | 50 | | K | |
| Date/Time From: 09/26/2021 0700 | SUN | Date/Time To: 09/26/2021 1900 | | | | |
| 4. Operations Personnel | | | | | | |
| OPERATIONS CHIEF | | MARK JAMIESON | | PLANNING OPERATIONS | | DAVID WALKER CHAD COOK (T) |
| FIELD OPERATIONS | | MIKE DAVIS | | BRANCH DIRECTOR | | VICKY EDGE |
| DIVISION/GROUP SUPERVISOR | | RYAN SHARPE | | SAFETY OFFICER | | T. RIVERS; T. HAWKINS; D. STONE T. HERZBERGER SOF2 (T) |
| 5. Resources Assigned this Period | | | | | | |
| Strike Team / Task Force / Resource Designator | | LWD | Leader | Number Persons | Drop Off PT./Time | Pick Up PT./Time |
| O-1345 TFLD WRIGHT ^ | | 10/02 | JOSH WRIGHT | 1 | WILLOW CREEK/0700 | WILLOW CREEK/1900 |
| C-135 HC2 PVT NORTH PACIFIC FORESTRY 136 ^ | | 10/01 | JEFF ANDERSON | 20 | WILLOW CREEK/0700 | WILLOW CREEK/1900 |
| E-1 ENG3 CO SEC FPO E114 ^ | | 09/28 | CHARLES JAMES | 4 | WILLOW CREEK/0700 | WILLOW CREEK/1900 |
| E-1047 ENG3 USFS SHF 331 ^ | | 10/05 | BRIAN CARMAN | 5 | WILLOW CREEK/0700 | WILLOW CREEK/1900 |
| E-911 ENG4 USFS WY MRF ENGINE 492 ^^ | | 10/02 | MEGHEN BROMAN | 4 | WILLOW CREEK/0700 | WILLOW CREEK/1900 |
| E-70 ENG5 PVT FORREST FIRE ^ | | 10/01 | AARON VELA | 3 | WILLOW CREEK/0700 | WILLOW CREEK/1900 |
| E-21 ENG6 PVT OUTBACK FIREFIGHTING 21 ^ | | 09/29 | JARED ANDRA | 3 | WILLOW CREEK/0700 | WILLOW CREEK/1900 |
| E-34 WTT2 TITUS ENTERPRISES ^ | | 10/05 | TERRANCE TITUS | 2 | WILLOW CREEK/0700 | WILLOW CREEK/1900 |
| E-72 WTS1 PVT NORTH STATE ^ | | 10/02 | KENNETH FOSTER | 1 | WILLOW CREEK/0700 | WILLOW CREEK/1900 |
| E-481 DOZ3 PVT CM CONSTRUCTION ^ | | 09/30 | STEVEN EDSALL | 2 | WILLOW CREEK/0700 | WILLOW CREEK/1900 |
| E-428 MAST PVT CUTTING EDGE ^ | | 10/04 | KIRK HONEY | 2 | WILLOW CREEK/0700 | WILLOW CREEK/1900 |
| E-101 EMTF CHIAPETTI ^^ | | 10/04 | BRITTANY CHIAPETTI | 1 | WILLOW CREEK/0700 | WILLOW CREEK/1900 |
| O-1487 EMPF BAIR ^ | | 10/02 | BRIAN BAIR | 1 | WILLOW CREEK/0700 | WILLOW CREEK/1900 |
| O-1252 SOF2 NPS NASH ^ | | 09/27 | TOM NASH (WORKING ON BOTH DIV I AND K) | 1 | WILLOW CREEK/0700 | WILLOW CREEK/1900 |
| O-1450 SOFR USFS PFISTER ^ | | 10/02 | KEVIN PFISTER | 1 | WILLOW CREEK/0700 | WILLOW CREEK/1900 |
| 6. Control Operations/Work Assignments: | | | | | | |
| Task: Work to the north of Dailey Ranch and continue prepping the Denny Road and town of Denny working to the northeast to the wilderness boundary. Ensure the Denny Road remains open to allow for ingress and egress of firefighters and residents. Structure defense around Daily Ranch, Denny, and New River Trailhead | | | | | | |
| 8. Division/Group Communication Summary | | | | | | |
| Function | Channel | RX Frequency N/W | RX Tone/NAC | TX Frequency N/W | TX Tone/NAC | Mode |
| COMMAND | 4 | 173.5000 N | 107.2 | 165.8125 N | 107.2 | |
| COMMAND | 5 | 173.6500 N | 107.2 | 164.8125 N | 107.2 | |
| TACTICAL | 8 | 166.7250 N | 107.2 | 166.7250 N | 107.2 | |
| AIR TO GROUND | 12 | 171.8625 N | | 171.8625 N | | |
| AIR TO GROUND | 13 | 171.0375 N | | 171.0375 N | | |
| 9. Prepared By (Resource Unit Leader) | | | Approved By (Planning Section Chief) | | Date | Time |
| JESSICA FORDER | | | MISSY FORDER | | 09/25/2021 | 2100 |

Division/Group Assignment List (ICS 204 WF)

Controlled Unclassified Information//Basic

| | | | | | | | |
|-------------------------------------------------------------------------------------------------------------------------------------------------------------------------------------------------------------------------------------------------------------------------------|---------|-------------------------------------------|---------------------------------------------|----------------------------|-------------|-----------------------------------------------------------|-------------|
| 1. Incident Name: | | | | 3. | | | |
| MONUMENT | | | | Branch: | | Division/Group | |
| 2. Operational Period: DAY | | | | 50 | | K | |
| Date/Time From: 09/26/2021 0700 SUN | | Date/Time To: 09/26/2021 1900 SUN | | | | | |
| 4. Operations Personnel | | | | | | | |
| OPERATIONS CHIEF | | MARK JAMIESON | | PLANNING OPERATIONS | | DAVID WALKER CHAD COOK (T) | |
| FIELD OPERATIONS | | MIKE DAVIS | | BRANCH DIRECTOR | | VICKY EDGE | |
| DIVISION/GROUP SUPERVISOR | | RYAN SHARPE | | SAFETY OFFICER | | T. RIVERS; T. HAWKINS; D. STONE T. HERZBERGER SOF2 (T) | |
| 6. Control Operations/Work Assignments: | | | | | | | |
| properties. | | | | | | | |
| Purpose: Keep the Monument fire within existing containment lines. In the event the River Fire begins to threaten Denny, protection measures are already in place. | | | | | | | |
| End State: Keep the Monument and River Fires on the east side of the New River. Minimize fire impact to private property and Forest Service infrastructure along Denny Road. Note: The Denny Road is one way in and out and residents may still be at Dailey Ranch and Denny. | | | | | | | |
| 7. Special Instructions: | | | | | | | |
| Consult a REAF or ARCH before ground disturbance. | | | | | | | |
| 8. Division/Group Communication Summary | | | | | | | |
| Function | Channel | RX Frequency N/W | RX Tone/NAC | TX Frequency N/W | TX Tone/NAC | Mode | |
| COMMAND | 4 | 173.5000 N | 107.2 | 165.8125 N | 107.2 | | |
| COMMAND | 5 | 173.6500 N | 107.2 | 164.8125 N | 107.2 | | |
| TACTICAL | 8 | 166.7250 N | 107.2 | 166.7250 N | 107.2 | | |
| AIR TO GROUND | 12 | 171.8625 N | | 171.8625 N | | | |
| AIR TO GROUND | 13 | 171.0375 N | | 171.0375 N | | | |
| 9. Prepared By (Resource Unit Leader) | | | Approved By (Planning Section Chief) | | | Date | Time |
| JESSICA FORDER | | | MISSY FORDER | | | 09/25/2021 | 2100 |

| | | | |
|-------------------------------------------------------|---------------------------------------|---------------------------------------------|----------------------------------------------------------------------------------|
| INCIDENT RADIO COMMUNICATIONS PLAN ICS 205 | Incident Name Monument Fire | Date/Time Prepared 9/25/21 @ 1730 | Operational Period Date/Time DAY-NIGHT 09/26/2021 0700 - 09/27/21 0700 |
|-------------------------------------------------------|---------------------------------------|---------------------------------------------|----------------------------------------------------------------------------------|

4. BASIC RADIO CHANNEL UTILIZATION

| Ch # | Channel Name | Assignment | RX Frequency Narrowband (N) Wideband (W) | | RX Tone/NAC | TX Frequency Narrowband (N) Wideband (W) | | TX Tone/NAC | Mode Digital (D) Analog (A) Mixed (M) | Remarks |
|------|--------------|---------------|------------------------------------------------|---|----------------|------------------------------------------------|---|----------------|------------------------------------------------|---------------------------------|
| 1 | CMD 1 | ALL DIVISIONS | 173.8125 | N | 107.2 | 168.4750 | N | 107.2 | A | Located on Weaver Bally |
| 2 | CMD 2 | ALL DIVISIONS | 171.5375 | N | 107.2 | 164.8625 | N | 107.2 | A | Located on Hayfork Bally |
| 3 | CMD 3 | ALL DIVISIONS | 171.0875 | N | 107.2 | 164.6000 | N | 107.2 | A | Located on Bully Choop |
| 4 | CMD 4 | ALL DIVISIONS | 173.5000 | N | 107.2 | 165.8125 | N | 107.2 | A | Located on Brush Mt. |
| 5 | CMD 5 | ALL DIVISIONS | 173.6500 | N | 107.2 | 164.8125 | N | 107.2 | A | Located on Ironside Lookout |
| 6 | TAC 6 | ROAD GROUP | 168.0500 | N | 107.2 | 168.0500 | N | 107.2 | A | |
| 7 | TAC 7 | DIV I | 168.6000 | N | 107.2 | 168.6000 | N | 107.2 | A | NIGHT DIVISIONS - G / I / K |
| 8 | TAC 8 | DIV K & W | 166.7250 | N | 107.2 | 166.7250 | N | 107.2 | A | |
| 9 | TAC 9 | DIV L/U & Z | 166.7750 | N | 107.2 | 166.7750 | N | 107.2 | A | |
| 10 | TAC 10 | DIV G | 168.2500 | N | 107.2 | 168.2500 | N | 107.2 | A | |
| 11 | TAC 11 | DIV Y | 168.2375 | N | 107.2 | 168.2375 | N | 107.2 | A | |
| 12 | A/G CMD | ALL DIVISIONS | 171.8625 | N | | 171.8625 | N | | A | Incident Air to Ground Command |
| 13 | A/G TAC | ALL DIVISIONS | 171.0375 | N | | 171.0375 | N | | A | Incident Air to Ground Tactical |
| 14 | IA-CMD | ALL DIVISIONS | 171.5750 | N | | 165.0125 | N | 136.5 | A | Shasta Forest Repeater (Tone 4) |
| 15 | CALCORD | ALL DIVISIONS | 156.0750 | N | 156.7 | 156.0750 | N | 156.7 | A | MEDIVAC Coordination (Tone 6) |
| 16 | GUARD | ALL DIVISIONS | 168.6250 | N | | 168.6250 | N | 110.9 | A | EMERGENCY HAILING OF AIRCRAFT |

Special Instructions

This group is tone locked and tone protected with Tone 10 (107.2) on the receive and transmit sides due to fire activity and shared tactical frequency use in the immediate vicinity. You must tone protect both sides of the frequencies. (Information is controlled and unclassified)

I-205 Prepared By **Barry Stearns COML 954-553-6544**  **Communications Trailer (ICP) Phone Number: 925-817-9955**

| | | | |
|-------------------------------------------------------|--------------------|---------------------------|---------------------------------------------------|
| INCIDENT RADIO COMMUNICATIONS PLAN ICS 205 | Incident Name | Date/Time Prepared | Operational Period Date/Time |
| | Monument IA | 9/25/21 @ 1730 hrs | DAY-NIGHT 09/26/2021 0700- 09/27/2021 0700 |

4. BASIC RADIO CHANNEL UTILIZATION

| Ch # | Channel Name | Assignment | RX Frequency Narrowband (N) Wideband (W) | | RX Tone/NAC | TX Frequency Narrowband (N) Wideband (W) | | TX Tone/NAC | Mode Digital (D) Analog (A) Mixed (M) | Remarks |
|------|--------------|---------------|------------------------------------------------|---|----------------|------------------------------------------------|---|----------------|------------------------------------------------|------------------------------------------|
| 1 | SHF-R | All Divisions | 171.5750 | N | | 165.0125 | N | OST | A | Shasta Forest Repeater (Tone 4,5,6,9) |
| 2 | SERV-R | All Divisions | 171.5000 | N | | 164.8250 | N | OST | A | Shasta Service Net (Tone 4,6) |
| 3 | SHU-L | All Divisions | 151.1600 | N | | 159.2700 | N | OST | A | CalFire Shasta Command (Tone 3,7) |
| 4 | SRF-R | All Divisions | 172.3750 | N | | 164.1750 | N | OST | A | Six Rivers Forest Repeater (Tone 5,6,13) |
| 5 | NIFC T2 | NIFC T2 | 168.2000 | N | | 168.2000 | N | | A | I/A Tactical |
| 6 | RS TAC 4 | RS TAC 4 | 166.5500 | N | | 166.5500 | N | | A | I/A Tactical |
| 7 | RS TAC 5 | RS TAC 5 | 167.1125 | N | | 167.1125 | N | | A | I/A Tactical |
| 8 | CDF T11 | All Divisions | 151.4450 | N | 192.8 | 151.4450 | N | 192.8 | A | I/A Tactical (Tone 16) |
| 9 | XTR-R | All Divisions | 154.7850 | N | | 158.7600 | N | | A | Trinity County Command (Tone 10,13) |
| 10 | MON CM2 | All Divisions | 171.5375 | N | 107.2 | 164.8625 | N | 107.2 | A | Monument: Hayfork Bally (Tone 10) |
| 11 | MON CM4 | All Divisions | 173.5000 | N | 107.2 | 165.8125 | N | 107.2 | A | Monument: Brush Mountain (Tone 10) |
| 12 | AG TAC | All Divisions | 171.0375 | N | | 171.0375 | N | | A | Air to Ground Tactical |
| 13 | AG08 SEC | All Divisions | 166.8750 | N | | 166.8750 | N | | A | Initial Attack Air/Ground Secondary |
| 14 | AG43 PRI | All Divisions | 167.6000 | N | | 167.6000 | N | | A | Initial Attack Air/Ground Primary |
| 15 | CALCORD | All Divisions | 156.0750 | N | 156.7 | 156.0750 | N | 156.7 | A | MEDIVAC Coordination (Tone 6) |
| 16 | GUARD | All Divisions | 168.6250 | N | | 168.6250 | N | 110.9 | A | Emergency (Tone 1) |

Special Instructions

****IMPORTANT**** This IA group is tone selectable. Older legacy radios (DPH/GPH) will need to select the proper tone for each channel as it is selected, including Guard and Calcord. Due to how the tone list is programmed into the legacy radios, they should only be cloned by like radios that were cloned by Communications. Tones for the Command channels are recommendations. (Information is Controlled and Unclassified)

I-205 Prepared By Barry Stearns COML 954-553-6544  Communications Trailer (ICP) Phone Number: 925-817-9955

MEDICAL PLAN (ICS 206 WF)

Controlled Unclassified Information//Basic

| 1. Incident/Project Name | | 2. Operational Period | | | | | | |
|-----------------------------------------------------------------------|------------------------------------------------------------------------------------------------------------------------|------------------------------------|-----------------------------|---------|----------------|---------|--|-----------------------------|
| Monument/Knob Fire | | 09/26-27/2021 0700-0700 | | | | | | |
| 3. Medical Aid Stations | | | | | | | | |
| Medical Aid Stations | Location | Advanced Life Support (ALS) | | | | | | |
| | | Yes | No | | | | | |
| Frontline Medical | Weaverville Base - 230 Washington St, Weaverville, CA 96093 | X | | | | | | |
| Frontline Medical | Hayfork Base – 6000 Highway 3, Hayfork CA 96041 | X | | | | | | |
| Adventure Medics | Willow Creek Base | X | | | | | | |
| 4. Ambulance Services | | | | | | | | |
| Name | Complete Address | Phone & EMS Frequency | Advanced Life Support (ALS) | | | | | |
| | | | Yes | No | | | | |
| Ambulance 3 (Madison 3) (LWD 10/4, can crew swap) | Weaverville/DP 121 | 208-534-8065 | X | | | | | |
| Ambulance 4 (local resource crew swap) | Willow Creek/DP200 | 707-845-0219 | X | | | | | |
| Ambulance 5 (LWD 10/5, crew swap) | Weaverville/Big Bar | 312-451-9674 | X | | | | | |
| Ambulance 104 (local resource crew swap 9/25) | Hayfork/DP28 | 415-755-5248 | X | | | | | |
| E- 858 REMS 2 (LWD, 10/6) | Weaverville/DP 121 | 908-209-0433 | X | | | | | |
| E-863 REMS 3 LWD (9/27) | Willow Creek/DP200 | 301-523-5800 | X | | | | | |
| 4. Air Ambulance Services | | | | | | | | |
| Name | Location | Advanced Life Support (ALS) | | | | | | |
| | For all resources call 530-225-2411 | Yes | No | | | | | |
| Reach | Redding | X | | | | | | |
| PHI | Redding | X | | | | | | |
| CHP H-14, 16 (Hoist Day) | Redding | X | | | | | | |
| Cal Fire H-102 | Kneeland, Day Only | | X | | | | | |
| Guard 873 | Redding | X | | | | | | |
| 5. Hospitals | | | | | | | | |
| Name Complete Address | GPS Datum – WGS 84 Coordinate Standard Degrees Decimal Minutes DD° MM.MMM' N – Lat DD° MM.MMM' W - Long | | Travel Time | | Phone | Helipad | | Level of Care Facility |
| | Air | Gnd | Yes | No | | | | |
| Mercy Medical Hospital 2175 Rosaline Ave Redding, CA 96001 | Lat: | 40 35.60' N | 25 min | 1.5 hrs | (530) 225-7201 | X | | Level 2 Trauma |
| | Long: | 122 23.34' W | | | | | | |
| | VHF: | | | | | | | |
| Shasta Regional Hospital 1100 Butte St Redding, CA 96001 | Lat: | 40 35.10' N | 25 min | 1.5 hrs | (530) 244-5353 | X | | Level 3 Trauma |
| | Long: | 122 23.2' W | | | | | | |
| | VHF: | | | | | | | |
| Trinity Hospital 60 Easter Ave Weaverville, CA 96093 | Lat: | 40 44.17' | N/A | 60 min | (530) 623-5541 | X | | Level 4 Trauma |
| | Long: | 122 56.22' | | | | | | |
| | VHF: | | | | | | | |
| UC Davis Medical Center 2315 Stockton Blvd Sacramento, CA 95817 | Lat: | 38°33.32' N | 1 hr | 3 hrs | (916) 703-6576 | X | | Level 1 Trauma, Burn Center |
| | Long: | 121°27.35' W | | | | | | |
| | VHF: | | | | | | | |
| St Joseph Medical Center 2700 Dolbeer St Eureka CA 95501 | Lat: | 40°47.03' N | 20 min | 1.5 hrs | (707) 269-4250 | X | | Level 3 Trauma |
| | Long: | 124°08.80' W | | | | | | |
| | VHF: | | | | | | | |

MEDICAL PLAN (ICS 206 WF)

Controlled Unclassified Information//Basic

| | | | | | | | | | | |
|----------------------------------------------------------------------------------|-------------------------------|-----------------------------|---------------------------------------------------------------------------------------------------------------|---------|--------------------------------|---|---------------------------|-----------------------|---------------------------|--|
| Mad River Community Hospital 3800 James Rd Arcata, CA 95521 | Lat: Long: VHF: | 40°53.72' N 124°05.45' W | 20 min | 1.5 hrs | (707) 826-8264 Extension #1 | X | | Level 3 Trauma | | |
| 6. Division Branch Group | | Area Location Capability | | | | | | | | |
| <h2 style="margin: 0;">Branch 10</h2> <h2 style="margin: 0;">Div L/U</h2> | EMS Responders & Capability: | | Prescott Widly (EMTF) 714-336-2767 Amber Clifton (EMTF) 360-303-0152 Kari Tomlinson (EMPF) 503-515-8530 | | | | | | | |
| | Equipment Available on Scene: | | BLS/ALS | | | | | | | |
| | Medical Emergency Channel: | | CMD 1, 2, or 5 | | | | | | | |
| | ETA for Ambulance to Scene: | | | | | | | | | |
| | Air: | | 25 min | | | | | | | |
| | Ground: | | 50 min | | | | | | | |
| | Approved Helispot: | | | | | | | | | |
| | Lat: Long: | | | | | | | | | |
| <h2 style="margin: 0;">Branch 40</h2> <h2 style="margin: 0;">Div W</h2> | EMS Responders & Capability: | | Dan Landis (EMTF) 805-798-5612 | | | | | | | |
| | Equipment Available on Scene: | | BLS | | | | | | | |
| | Medical Emergency Channel: | | CMD 2 or 3 | | | | | | | |
| | ETA for Ambulance to Scene: | | | | | | | | | |
| | Air: | | 30 min | | | | | | | |
| | Ground: | | 120 min | | | | | | | |
| | Approved Helispot: | | H30 | | Hayfork airport | | | | | |
| | Lat: Long: | | 40 33.783' 123 14.153' | | 40 32.820' 123 10.778333' | | | | | |
| <h2 style="margin: 0;">DIV Y</h2> | EMS Responders & Capability: | | Tom Gibson (EMPF) 480-390-2438 Brian Bair (EMPF) 509-366-6816 | | | | | | | |
| | Equipment Available on Scene: | | ALS | | | | | | | |
| | Medical Emergency Channel: | | CMD 2, 3, or 5 | | | | | | | |
| | ETA for Ambulance to Scene: | | | | | | | | | |
| | Air: | | 30 Minutes | | | | | | | |
| | Ground: | | 130 Minutes | | | | | | | |
| | Approved Helispot: | | H100 | | | | | | | |
| | Lat: Long: | | 40 37.792' 123 20.712' | | | | | | | |
| <h2 style="margin: 0;">Div Z</h2> | EMS Responders & Capability: | | Steve Ellingson (EMTF) 707-372-7020 Remberto Aguirre (EMPF) 818-632-6248 | | | | | | | |
| | Equipment Available on Scene: | | ALS/BLS | | | | | | | |
| | Medical Emergency Channel: | | CMD 2 or 5 | | | | | | | |
| | ETA for Ambulance to Scene: | | | | | | | | | |
| | Air: | | 30 Minutes | | | | | | | |
| | Ground: | | 130 Minutes | | | | | | | |
| | Approved Helispot: | | H90 | | H95 | | H100 | | H105 | |
| | Lat: Long: | | 40 40.697' 123 16.960' | | 40 40.507' 123 19.547' | | 40 37.792' 123 20.712' | | 40.39.950' 123.20.328' | |

MEDICAL PLAN (ICS 206 WF)

Controlled Unclassified Information//Basic

| | | |
|-----------------------------|-------------------------------|----------------------------------------------------------------------------------------|
| Div G | EMS Responders & Capability: | Larissa Capps (EMPF) 406-498-6529 Jacob Buchert (EMTF) 480-627-9213 |
| | Equipment Available on Scene: | ALS/BLS |
| | Medical Emergency Channel: | CMD 2, 4, or 5 |
| | ETA for Ambulance to Scene: | |
| | Air: | 30 Minutes |
| | Ground: | 40 Minutes to DP61, >60 to DP 51-53 |
| | Approved Helispot: | |
| | Lat: | |
| | Long: | |
| Div I | EMS Responders & Capability: | Thor Mollman (EMPF) 805-539-3403 Amber Bowlds (EMTF) 707-572-6531 |
| | Equipment Available on Scene: | ALS/BLS |
| | Medical Emergency Channel: | CMD 4 or 5 |
| | ETA for Ambulance to Scene: | |
| | Air: | 30 Minutes |
| | Ground: | 45-60 Minutes to DP214 |
| | Approved Helispot: | H10 |
| | Lat: | 40 52.020' |
| | Long: | 123 26.920' |
| Div K | EMS Responders & Capability: | Brittany Chiapetti (EMTF) 505-339-0767 |
| | Equipment Available on Scene: | ALS/BLS |
| | Medical Emergency Channel: | |
| | ETA for Ambulance to Scene: | CMD 2, 4, or 5 |
| | Air: | 25 Minutes |
| | Ground: | 20-30 Minutes to DP60, 80-120 to DP56 and beyond |
| | Approved Helispot: | H10 |
| | Lat: | 40 52.020' |
| | Long: | 123 26.920' |
| Hayfork Camp | EMS Responders & Capability: | Frontline Medical - Kathy Branson (RN) & Rick Johnson (Paramedic) |
| | Equipment Available on Scene: | ALS |
| | Medical Emergency #: | 559-804-7058, CMD 2 |
| | ETA for Ambulance to Scene: | |
| | Air: | 25 minutes |
| | Ground: | 90 minutes |
| | Approved Helispot: | Hayfork Airport |
| | Lat: | 40 32.820000' |
| | Long: | 123 10.778333' |
| Weaverville Camp | EMS Responders & Capability: | Frontline Medical – Sara Fisher (AEMT), Kevin Lancaster (RN), Sean Pearson MEDL (T) |
| | Equipment Available on Scene: | ALS |
| | Medical Emergency #: | 530-927-8425, CMD 1 |
| | ETA for Ambulance to Scene: | |
| | Air: | 25 minutes |
| | Ground: | 60 minutes |
| | Approved Helispot: | Weaverville Airport |
| | Lat: | 40 44.8' |
| | Long: | 122 55.3' |

MEDICAL PLAN (ICS 206 WF)

Controlled Unclassified Information//Basic

| | | | | |
|-----------------------------------------------|-------------------------------|----------------------------------------------------------------|----------------------------------|--|
| Willow Creek | EMS Responders & Capability: | Adventure Medics – Abrielle Meyer (EMT) & Scott Fleming (EMTP) | | |
| | Equipment Available on Scene: | ALS | | |
| | Medical Emergency #: | 785-554-2573, CMD 4 | | |
| | ETA for Ambulance to Scene: | | | |
| | Air: | 25 Minutes | | |
| | Ground: | 70-90 Minutes | | |
| | Approved Helispot: | Helibase | | |
| | Lat: | 40 57.084' | | |
| | Long: | 123 38.256' | | |
| ICP Redding | EMS Responders & Capability: | Matt Moran (MEDL) | | |
| | Equipment Available on Scene: | BLS | | |
| | Medical Emergency #: | 865-722-3435, CMD 3 | | |
| | ETA for Ambulance to Scene: | | | |
| | Air: | N/A | | |
| | Ground: | 10 Minutes | | |
| 8. Prepared By (Medical Unit Leader) | | 9. Date/Time | 10. Reviewed By (Safety Officer) | |
| Jonathan Kirk, MEDL, Sean Pearson MEDL (T) | | 09/25/2021 1900 | <i>David Stone SOFI</i> | |
| | | | 09/25/2021 1900 | |

AIR OPERATIONS SUMMARY

Prepared By: John Mason

Prepared Date: 09/25/2021

Prepared Time: 1800

| | | | | | |
|--------------------------------------|---------------------------------------|----------------------------|--------------------------|------------------------|-----------------------|
| 1. INCIDENT NAME: Monument | 2. OPS PERIOD DATE: 9/26/21 | START TIME: 0900 | END TIME: 1930 | SUNRISE 0706 | SUNSET 1906 |
|--------------------------------------|---------------------------------------|----------------------------|--------------------------|------------------------|-----------------------|

| | | |
|-----------------------------------------------------------------------------------------------------------------------------------------------------------------------------------------------------------------------------------------------------------------------------------------------------------------------------------------------------------|-------------------------------------------------------------------------------------|--------------------------------------------------------------------------------|
| 3. REMARKS and RISK MITIGATIONS: All missions will be analyzed in terms of hazards and risks. Insure to brief for all IA missions to include new frequencies, ground contacts and other aircraft. Aerial Hazard – Wires across Hwy299 and river corridor through the fire. High level to low level recon of each new LZ/Dipsite | 4. READY ALERT AIRCRAFT: IA 216GH Hoist at RDD See Medical Plan | 5. TFR # 1/0713 & 1/0714 Surface/11,500 AGL Freq: 126.275 |
|-----------------------------------------------------------------------------------------------------------------------------------------------------------------------------------------------------------------------------------------------------------------------------------------------------------------------------------------------------------|-------------------------------------------------------------------------------------|--------------------------------------------------------------------------------|

| 6. PERSONNEL | NAME | PHONE # | 7. FREQUENCIES | RX/TX | Tone | 8. FIXED-WING |
|------------------------------------------------------|-----------------------------------|------------------------------|------------------------------------------------------------|----------------------|---------------------------|--------------------------------------------------------------------------------------------------------------------------------------------------------------------------------------------------------------------------------------------------------------------------------------------------------------------------------------------------------------------------------------------------------------------------------------------------------------------------------------------------------------------------------------------------------------------------------------------------------------------------------------------------------------------------------------------------------------------------------------|
| AOBD | John Mason | 865-336-6664 | A/A (Fixed/TFR) | 126.2750 | | Air Attack: N711PB – Redding pool Air Attack: Redding pool Lead Planes/Airtankers - Order through Air Attack If air attack is not up---order through Helibase. Redding Airport(RDD) 40° 30.354'N x 122° 18.002'W Willow Creek Helibase 40° 57.084'N x 123° 38.256'W Weaverville Airport(O54) 40°44.878'N x 122°55.329'W Benton Airfield(O85) 40° 34.420'N x 122° 24.440'W COSTS: 2021.monument.finance@firenet.gov HB email: willowhelibase2021@gmail.com Incident Job Code: Monument Fire – P5N7GJ (0514) |
| ASGS ASGS (t) | Bart Kicklighter Shannon Myers | 828-460-6559 406-853-0719 | A/A Rotor | 123.7750 | | |
| HEBM (Willow HB) HEBM-T (Willow HB) | Gabe Vera Killian Malone | 505-780-1320 703-477-7798 | A/G Command | 171.8625 | | |
| ATGS (Redding) | Justin Regelin | 530-360-1734 | A/G Tactical | 171.0375 | | |
| | | | DECK (Willow Creek) | 168.3500 | | |
| Dispatch - Aircraft | Laurry/Joni/Shae | 530-226-2400 | | | | |
| Dispatch Redding Dispatch 6Rivers | Main Main | 530-226-2400 707-441-3644 | CALCORD-Medical AIRGUARD (emergency only) | 156.0750 168.6250 | 156.7 TX tone 110.9 | |
| Redding ATB | Kelly Mathis | 530-226-2795 | | | | |

9.HELICOPTERS

| FAA N# | T Y | MAKE/ MODEL | BASE | AVAIL | START | REMARKS | FAA N# | T Y | MAKE/ MODEL | BASE | AVAIL | START | REMARKS |
|----------------|-----|-------------|---------------|-------|-------|-----------------------|-----------------------------------------------------------------------------------------|-----|-------------|-------------|-------|-------|--------------|
| 675TH | 1 | Kmax | Willow Creek | 0800 | 0900 | A-303 Bucket | 805RA | 1 | Kmax | Weaverville | 0800 | 0900 | A-306 Bucket |
| H-520 (H-FHQB) | 2 | 205A++ | Willow Creek | 0800 | 0900 | A-288 Bucket / Rappel | | | | | | | |
| 216GH* | 2 | 205A-1 | Willow Creek | 0800 | 0900 | A-366 Bucket / IA | | | | | | | |
| 350TA | 3 | AS350B3 | Willow Creek | 0800 | 0900 | A-339 HCLO/Recon | Note: * 216GH IA available, but some overhead are providing key Helibase management. | | | | | | |
| 669AC | 3 | AS350B3 | Redding (O85) | 0800 | 0900 | A-368 Recon/PSD | | | | | | | |

Monument and Knob Fires

Infectious Disease Procedures

HYGIENE AND PREVENTION

Good hygiene and social practices are key to maintaining a healthy workforce and keeping crews deployed and working at full efficiency during the 2021 wildland fire season. These practices can offer significant protection from a host of infectious diseases, common to communal living and working environments like wildland fire.

- Frequently wash hands with soap and water
- Liberally and regularly use hand sanitizer if soap & water unavailable
- Physically distance, at least 6 feet apart, whenever possible
- Facial coverings/masks should be always utilized when inside (yurts, vehicles, tents, structures) and when physical distancing is not possible outside
- Frequently clean and sanitize high touch or common surfaces like doorknobs, vehicle interior surfaces, desktops, etc.
- Avoid sharing personal items such as protective gear, utensils, food, and tools

DAILY SCREENING QUESTIONS FOR POTENTIAL COVID

Every day, ask yourself, "Self, today or in the past 24 hours, have I had any of the following symptoms?"

- Cough more than expected?
- Shortness of breath or difficulty breathing?
- Fever? Chills?
- Muscle pain, outside your normal for firefighting?
- Sore throat?
- New loss of taste or smell?
- Fatigue, outside your normal for firefighting?
- Headache, outside your normal for firefighting?
- Congestion or runny nose, outside your normal for firefighting?
- Nausea or vomiting?
- Diarrhea?

If you answered "YES" to any of the above questions,

- ☑ Mask up and maintain social distancing
- ☑ Contact (or have your supervisor contact) Covid coordinator **Seth Kirk** at **479-640-2670**. If unable to contact Todd, proceed to Medical for further screening.

Help stop the spread of COVID-19

DO YOU HAVE ANY OF THESE SYMPTOMS?

Fever, Chills, Cough, Shortness of Breath, Muscle Pain, Sore Throat or Loss of Taste or Smell, Positive test for COVID 19?

DO NOT ENTER THE ICP OR CAMPS

- Employee notify supervisor of presumed or confirmed COVID-19 Symptoms
- Supervisors Notify Seth Kirk at 479-640-2670 or Medical unit if not available
- Isolation as necessary do not allow potential infected employees to interact with others maintain 6 foot spacing and place mask on patient until evaluated.
- IMT will notify and coordinate with COVID Advisor, and Public Health Department.

The following testing location is available to all Monument Personnel

USDA FOREST SERVICE RAPID TESTING WITH COVID CLINIC



Use the QR code to begin registration for testing.

Or enter <https://mobile.covidclinic.org/USDA-Forest-Service/> into your web browser. The test is FREE.

1. Fill out PATIENTINFORMATION form.
2. Click **NEXT**
3. Test results will be shared with McFar and Tst@usda.gov. This autofill's.
4. Click on check box authorizing disclosure of test results.
5. Sign using auto generated pen option. This gives consent for test results, privacy policy, and Terms of Service.
6. Click **NEXT**
7. Click on the check box agree to Terms and Conditions and Privacy Policy.
8. Click on **PLACE ORDER**
9. You will receive an e-mail with an order number. Take the order number to the testing station and provide to the attendant. You do not need to make an appointment. USE the Left Lane

Your COVID Clinic Testing location is:

Redding Clinic, 1055 Dana Drive, Redding, CA 96003

Hours of Operation: Monday- Saturday: 0730- 1700 (7:30 a.m.- 5:00 p.m). Sunday: 0800- 1600 (8:00 a.m. - 4:00 p.m)

After you have finished registering for your test, check your email to confirm that you have successfully registered and retrieve/save your Order Number.

Upon your arrival at the Redding, CA clinic- wear a mask at all times and have your order number readily available.

We look forward to seeing you and thank you for doing your part to keep your community safe.

Please note that only positive antigen test will have a RT-PCR Test performed if in doubt about any of these symptoms, consult Medical Personnel.



Monument Fire Information

Phone: 843-544-3345
Email: 2021.monument@firenet.gov
InciWeb: <https://inciweb.nwcg.gov/incident/maps/7750>
Facebook: www.facebook.com/ShastaTrinityNF
Twitter: @ShastaTrinityNF

We need your photos and videos!

Help us tell your story.

Scan the QR code to email or text your photos and videos.



Email: 2021.monument@firenet.gov Text: (843) 544-3345

Human Resource Message

“Expectations regarding appropriate behavior...”

We expect everyone assigned to the incident to conduct themselves in a professional manner. Inappropriate actions, behaviors, or comments will not be tolerated. You have the responsibility to stop inappropriate actions, behaviors or comments immediately upon becoming aware of them. Issues involving racial discrimination or sexual harassment must be reported to the Human Resource Specialist and the Incident Commander immediately.

Please let me know if you need clarification regarding these expectations, or if you would like assistance in any human resource related issue.

Human Resource Specialist: Karen Hartman 801-368-3493

HOWARD HUGE®



MONUMENT FIRE - Finance Process

CA-SHF-001187 – P5N7GJ/0514

All MONUMENT resources send Shift Ticket / CTR to 2021.monument.finance@firenet.gov, using format shown below.

Those on Monument Branch 50, please ensure that you are using the Monument email address listed above and no longer send your time to the Knob email.

All timekeeping for the incident is occurring through the ICP in Redding. All Finance staffing is located at the Holiday Inn in Redding.

Email Subject Line: See example below.

(Example: **TIME/O-200/SBear/Safety**)

Email all documents that pertain to your assignment:

| Agency Overhead | Agency ADs / EFFs | VIPR Resources | Contract / Agency Crews | Cooperators |
|--------------------------------------------|--------------------------------------------|---------------------------------------------------------------------------------------|---------------------------------------------------------------------------------------------|--------------------------------------------------|
| Resource Order Crew Time Reports (CTRs) | Resource Order Casual Hire Form CTRs | Resource Order VIPR Agreement Schedule of Items Inspections Shift Tickets | Resource Order Manifest Agreement / Contract Schedule of Items Inspections CTRs | Resource Order Agreement Shift Tickets / CTRs |

Submit Equipment Shift Tickets or Crew Time Reports (CTRs) daily.

Please **include your email address and phone number** in the body of the email when sending your documents, so that we can easily contact you if there are questions.

Find an error on your CTR or Shift Ticket? Just email the corrected timesheet to the finance email and in the name of the actual attachment file add the word "Corrected" so we know it isn't a duplicate.

Have questions? Please don't struggle on your own! Call us:

**FINANCE HELP LINE: (425) 500-9470 – Monument ICP
(Redding)**

COMP/CLAIMS Process

(501) 246-6277 (Diane) or (213) 431-4035 (Alice)

Injuries: For federal employees and cooperators, if you are injured, please contact the COMP for the Authorization for Treatment (CA-16). *We can issue the form directly to the hospital or clinic.* The employee or supervisor should contact COMP/CLAIM as soon as possible.

Replacement or Accidents: For claims there are different forms needed based on the circumstances of the property loss or damage. Please contact COMP/CLAIM first to find out which forms are appropriate for your situation, and what additional information might be needed. This will expedite the process. Pictures are required for some situations.

Unserviceable items must be turned into COMP if you are unable to replace at Supply. If items are lost or damaged on the fire line, the fire suppression module must provide a copy of the module's standard inventory with the documentation (OF-189) of broken or unserviceable items.

| Motor Vehicle Accident | Property Loss or Damage* <i>of items that cannot be replaced in Supply</i> |
|-------------------------------------------------------------------|--------------------------------------------------------------------------------------|
| SF-91, Motor Vehicle Accident SF-94 Witness Statement (if app) | Modified OF-289 (2 pages) |
| *Claims for Employees | Privately owned items must be processed through your home unit |

All potential claims for or against the government by private parties must be referred to COMP/CLAIM unit.

Monument Fire Incident Training Program

A TNSP is assigned to this incident and will be performing the majority of duties “virtually”.

To receive documented credit for your assignment, scan the QR Code or click on the link below to access and complete the Trainee Registration Form. Once registered you will receive additional instructions via text. For training related questions, call Jim Mitchell (TNSP) at 619-247-9396 or email jim_mitchell@fws.gov



[Monument Fire - Incident Trainee Registration Form](#)

**PLEASE CONTACT THE TRAINING SPECIALIST ONE
DAY PRIOR TO DEMOB TO BEGIN CLOSE-OUT
PROCESS**

Monument Fire Demob Unit

Demob Day Approaching?

As your demob day approaches pay attention to the IAP Demob Schedule.

Alert DMOB if there are issues. We can only fix things we know about.

936-489-1231 or email: 2021.monument.demob@firenet.gov

1. Ensure that your supervisor has released you from the incident using the Supervisor DMOB QR code, at least 24 hours in advance.
2. Contact FINANCE 24 hours prior to give them a heads-up you are departing:
Phone: 425-500-9470
3. Turn in any outstanding CTRs/Shift Tickets. Make sure they're SIGNED.
4. Confirm no missing financial documentation. (See Finance Page for full information)

Need air travel to get home?

IF YOUR RETURN METHOD OF TRAVEL IS BY AIR, CONTACT DMOB 72-HOURS BEFORE DEMOBING

Email: Date of Birth, Departing & Arriving Airport, Rental Car Return, email and phone number to: 2021.monument.demob@firenet.gov

AIR TRAVEL PHONE: 936-489-1231

Ω We are using a virtual check-out process for demob. Ω

Complete instructions are included on the next page.

Questions? 936-489-1231

Extensions and Crew Swaps

- Talk to your Division to get form and approval.
- Call the **Crew Swap/Extensions phone 425-500-9464** to virtually arrange a crew swap.
 - Completed Extension approval form is required to change last work day.
 - **Email: 2021.monument.checkin@firenet.gov**
 - **CHECK-IN/DEMOB HOURS OF OPERATION: 0630-2000**

Monument and Knob Demob Instructions

Ensure that your supervisor has released you from the incident using the Supervisor DMOB QR Code, at least 24 hours in advance.

On your Demob Day

STEP 1

- Obtain a hard copy ICS-221 Demobilization Check-Out Form** from the copy trailer at Weaverville or Hayfork

STEP 2

Obtain signatures on ICS-221 from supply, communications, ground support and weed wash. Once completed take a picture of ICS-221 and send to Demob for clearance. 2021.monument.demob@firenet.gov.

SUPPLY – Return gear and supplies.

- If nothing to turn in, contact supply and demob will clear you. – **334-604-1846 (Supply).**

COMMUNICATIONS – Return communications equipment

- If nothing to turn in, let demob know and they will verify your clearance

GROUND SUPPORT – Return pool NERV rentals, receive an inspection, etc.

- Be sure to get inspected **BEFORE** going through weed wash.
- Reminder: All vehicles which have been off-road must go thru weed wash (Junction City).
- If you have no business with GS, Demob will clear you – **803-360-6956 (Ground Support).**

STEP 3

FINANCE – To finalize your finance paperwork, do the following:

- Monument Resources:** Please call 425-500-9470 to initiate your final OF-288 or OF-286.
 - Virtual Demob, please email your final CTR/ST noting **Final** CTR/ST in the subject line of the email, please include your cell phone number. Monument Finance email – 2021.monument.finance@firenet.gov
 - In-Person Demob: If you are unable to do a virtual demob, please arrange for an in person demob at the Redding ICP. ***Please keep your hard copy CTRs/STs to be turned in in-person.***

You need your final, signed OF-288 Time Report or OF-286 Invoice BEFORE starting travel.

STEP 4

Contact DMOB at 936-488-1231 and DMOB will verify that you have completed check-out. Be prepared to talk about your actual departure date and time, your anticipated arrival date and time, and where you will be staying if travel includes overnight stops away from fire camp.

You must complete all four steps to be released in IROC.

WEAVERVILLE CAMP

Kitchen Hours: Breakfast 0500-1000, Diner 1700-2200

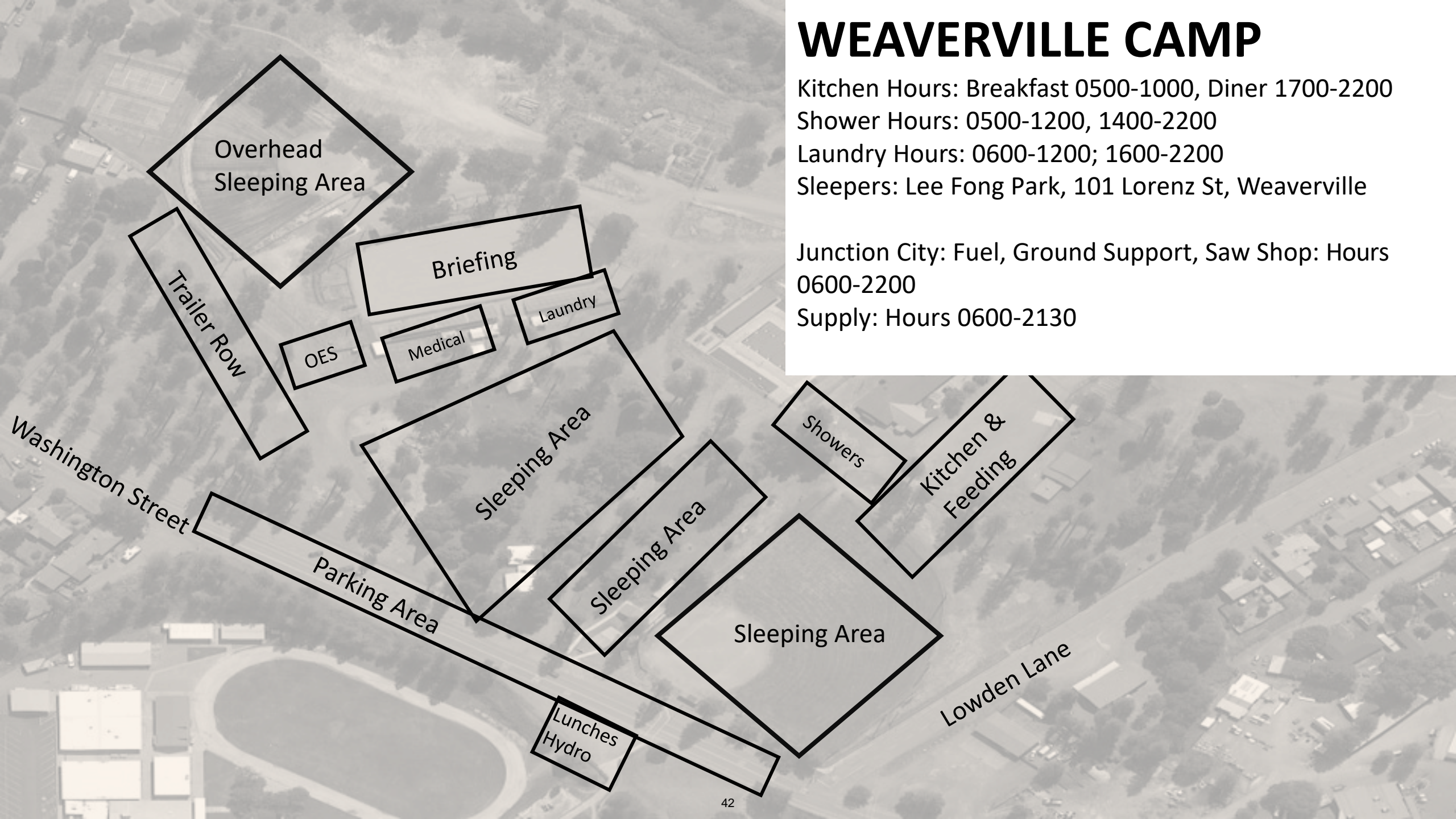
Shower Hours: 0500-1200, 1400-2200

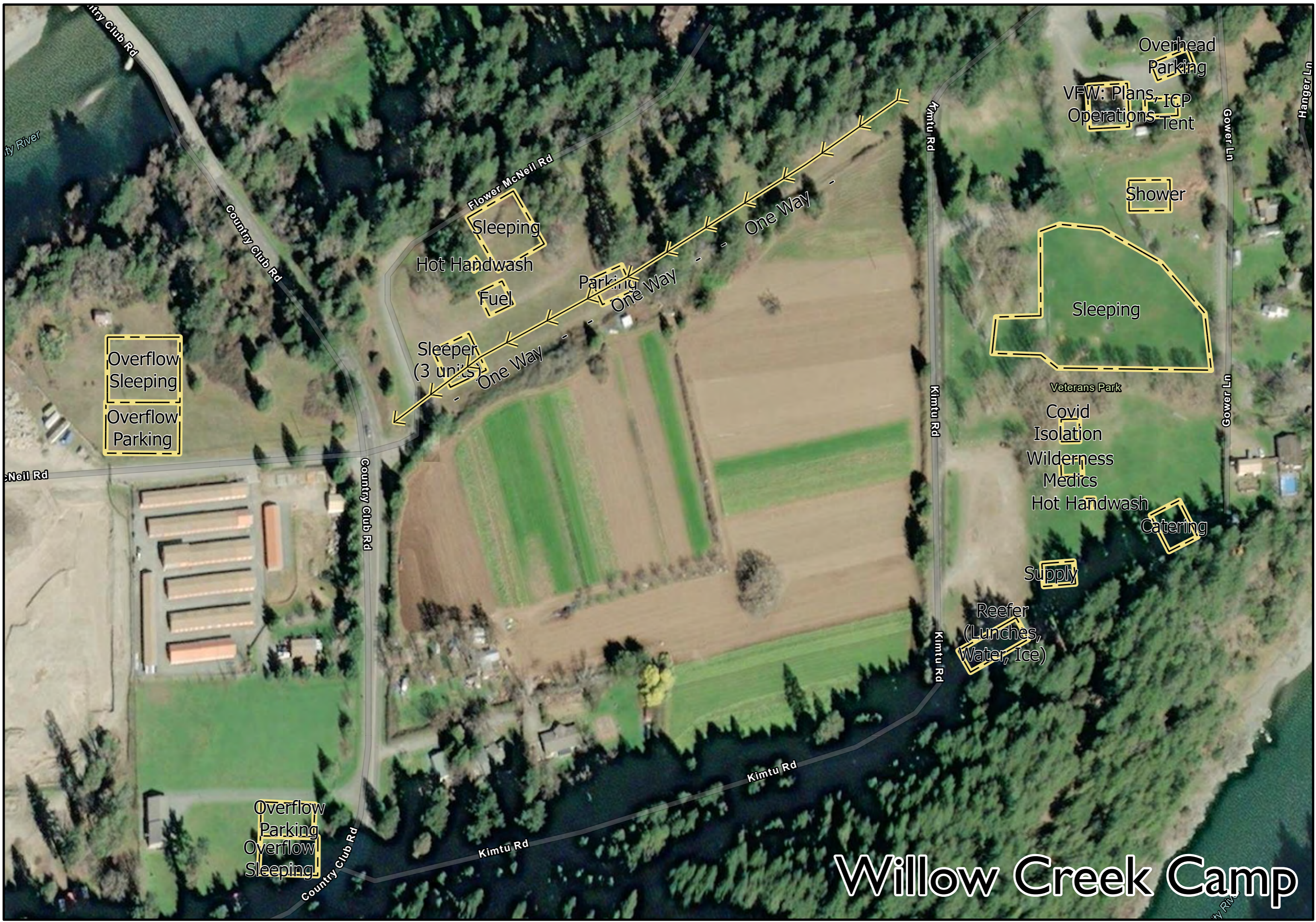
Laundry Hours: 0600-1200; 1600-2200

Sleepers: Lee Fong Park, 101 Lorenz St, Weaverville

Junction City: Fuel, Ground Support, Saw Shop: Hours
0600-2200

Supply: Hours 0600-2130





Overflow
Sleeping
Overflow
Parking

Overflow
Parking
Overflow
Sleeping

Sleeping
Hot Handwash
Fuel

Sleeper
(3 units)

Parking

Overhead
Parking
VFW: Plans, ICP
Operations Tent

Shower

Sleeping

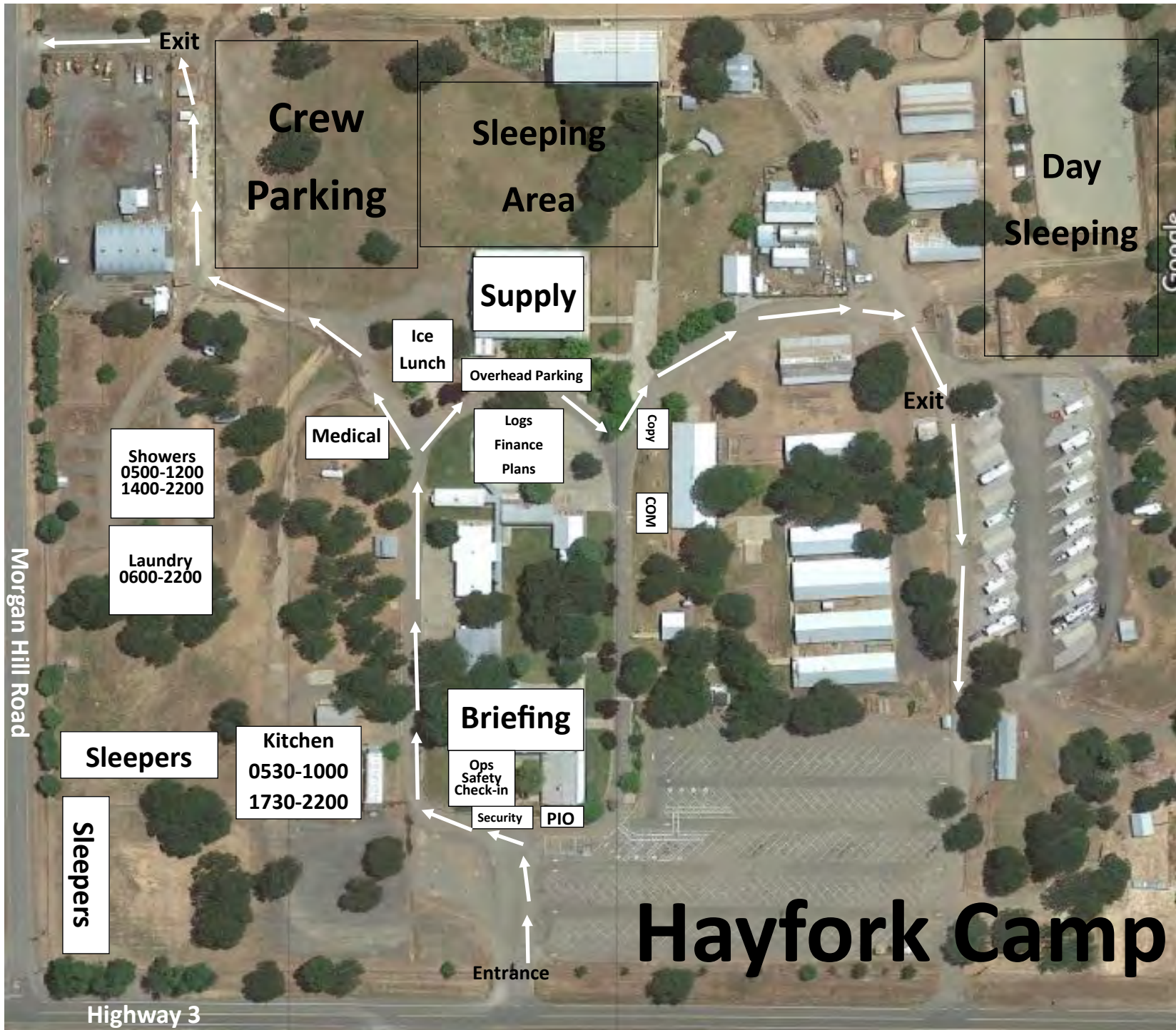
Veterans Park
Covid
Isolation
Wilderness
Medics
Hot Handwash

Catering

Supply

Reefer
(Lunches,
Water, Ice)

Willow Creek Camp



Medical Incident Report

FOR A NON-EMERGENCY INCIDENT, WORK THROUGH CHAIN OF COMMAND TO REPORT AND TRANSPORT INJURED PERSONNEL AS NECESSARY.

FOR A MEDICAL EMERGENCY: IDENTIFY ON SCENE INCIDENT COMMANDER BY NAME AND POSITION AND ANNOUNCE "MEDICAL EMERGENCY" TO INITIATE RESPONSE FROM IMT COMMUNICATIONS/DISPATCH.

Use the following items to communicate situation to communications/dispatch.

1. CONTACT COMMUNICATIONS / DISPATCH (**Verify correct frequency prior to starting report**)
Ex: "Communications, Div. Alpha. Stand-by for Emergency Traffic."
2. INCIDENT STATUS: *Provide incident summary (including number of patients) and command structure.*
Ex: "Communications, I have a Red priority patient, unconscious, struck by a falling tree. Requesting air ambulance to Forest Road 1 at (Lat./Long.) This will be the Trout Meadow Medical, IC is TFLD Jones. EMT Smith is providing medical care."

| | | |
|---------------------------------------------------|-------------------------------------------------------------------------------------------------------------------------------------------------------------------------------------------------------------------------------------------------------------------------------------------------------------------------------------------------------------------------------------------------------------------------------------------------------------------------------------------------------------------------------------------------------------------------------------------------------------------------------------|-----------------------------------------------------------------------------------------|
| Severity of Emergency / Transport Priority | <input type="checkbox"/> RED / PRIORITY 1 Life or limb threatening injury or illness. Evacuation need is IMMEDIATE <i>Ex: Unconscious, difficulty breathing, bleeding severely, 2° – 3° burns more than 4 palm sizes, heat stroke, disoriented.</i> <input type="checkbox"/> YELLOW / PRIORITY 2 Serious Injury or illness. Evacuation may be DELAYED if necessary. <i>Ex: Significant trauma, unable to walk, 2° – 3° burns not more than 1-3 palm sizes.</i> <input type="checkbox"/> GREEN / PRIORITY 3 Minor Injury or illness. Non-Emergency transport <i>Ex: Sprains, strains, minor heat-related illness.</i> | |
| Nature of Injury or Illness & Mechanism of Injury | | <i>Brief Summary of Injury or Illness (Ex: Unconscious, Struck by Falling Tree)</i> |
| Transport Request | | <i>Air Ambulance / Short Haul/Hoist Ground Ambulance / Other</i> |
| Patient Location | | <i>Descriptive Location & Lat. / Long. (WGS84)</i> |
| Incident Name | | <i>Geographic Name + "Medical" (Ex: Trout Meadow Medical)</i> |
| On-Scene Incident Commander | | <i>Name of on-scene IC of Incident within an Incident (Ex: TFLD Jones)</i> |
| Patient Care | | <i>Name of Care Provider (Ex: EMT Smith)</i> |

3. INITIAL PATIENT ASSESSMENT: *Complete this section for each patient as applicable (start with the most severe patient)*

Patient Assessment: See IRPG page 106

Treatment:

4. TRANSPORT PLAN:

Evacuation Location (if different): *(Descriptive Location (drop point, intersection, etc.) or Lat. / Long.)* Patient's ETA to Evacuation Location:

Helispot / Extraction Site Size and Hazards:

5. ADDITIONAL RESOURCES / EQUIPMENT NEEDS:

Example: Paramedic/EMT, Crews, Immobilization Devices, AED, Oxygen, Trauma Bag, IV/Fluid(s), Splints, Rope rescue, Wheeled litter, HAZMAT, Extrication

6. COMMUNICATIONS: Identify State Air/Ground EMS Frequencies and Hospital Contacts as applicable

| Function | Channel Name/Number | Receive (RX) | Tone/NAC * | Transmit (TX) | Tone/NAC * |
|-------------|---------------------|--------------|------------|---------------|------------|
| COMMAND | | | | | |
| AIR-TO-GRND | | | | | |
| TACTICAL | | | | | |

7. CONTINGENCY: **Considerations:** *If primary options fail, what actions can be implemented in conjunction with primary evacuation method? Be thinking ahead.*

8. ADDITIONAL INFORMATION: *Updates/Changes, etc.*

REMEMBER: Confirm ETA's of resources ordered. Act according to your level of training. Be Alert. Keep Calm. Think Clearly. Act Decisively.