

* Corrected *

INCIDENT ACTION PLAN MONUMENT FIRE SOUTH ZONE

CA-SHF-001187

Friday



OPERATIONAL PERIOD



North Zone

8/27/2021 0700

to

8/28/2021 0700



South Zone

THE GREAT EASTON PLAN

MONUMENT-FIRE

SOUTH ZONE

OF THE BULLY



THE GREAT EASTON PLAN
MONUMENT-FIRE
SOUTH ZONE
OF THE BULLY


INTERNATIONAL BUREAU



1911-1912



ORGANIZATION ASSIGNMENT LIST (ICS 203)

1. Incident Name: Monument Fire South Zone		2. Operational Period: Date From: 8/27/2021 Date To: 8/28/2021		
		Time From: 0700 Time To: 0700		
3. Incident Commander(s) and Command Staff:		7. Operation Section:		
IC/UC's	Mike Parkes / Chris Trindade (T)	Operations	Andy Turner	
Deputy	Todd Hopkins	Deputy Operations	Jim Hudson	
Safety Officer	Jack Piccinini / Tim Irwin	Night Ops	Steven Ward	
Information Officer	Suzi Brady / K. Haskett (T)	Staging Area		
Liaison Officer	M. Urquides / J. Davis	Branch	20	Robert Reynolds (T)
4. Agency/Organization Representatives:		Division/Group	DD	Darell Johnson (T)
Agency/Organization	Name	Division/Group	HH	Ryan Pack
CAL FIRE SHU	Dan Dennett	Division/Group		
Trinity Sheriff Office	Bryan Ward	Division/Group		
CHP	Brandon Lale	Division/Group		
SPI	Herb Baldwin	Branch	30	Mark League / Jeffrey Loveless (T)
PG&E	David Hotchkiss	Division/Group	NN	John Capen (T)
CDCR	Byron Conner	Division/Group	RR	Clint Swensen
CCC	Jose Murillo	Division/Group		
Wildfire Def. System	Ross Fillmore	Division/Group		
OES	Mark Courson / Pat Titus	Division/Group		
CNA	Mason Chinowith	Branch	Contingency	Bryan Farrell 12hr
DOT / DIST 1	Tom Fitzgerald	Division/Group	South Cont 1	Levi Randolph (T) 12hr
DOT / DIST 2	Eric Akana	Division/Group	South Cont 2	Mike Watner 12hr
		Division/Group		
		Division/Group		
		Division/Group		
		Branch		
		Staging Area	Hayfork	Brandyn Labrue
5. Planning Section:		Division/Group		
Chief	Ryan Davis / David Wood (T)	Division/Group		
Deputy	Sean Griffis	Division/Group		
Resource Unit	K.O'Neil / R. Roland (T) / A. Giles (T)	Division/Group		
Situation Unit	P. SeLegue / J. Day / M. Scheeline (T)	Branch		
Demobilization Unit	Greg Barnhart	Division/Group		
GISS	Matt Turner	Division/Group		
FBAN	Troy Velin	Division/Group		
IMET	Royce Fontenot	Division/Group		
Hired Equipment Tech Spec.	Danial Hu / Brian Bowman	Division/Group		
Crew Tech Spec.		Air Operations Branch		Director: Niko Matteoli
Training Tech Spec.	Dottie Shaw	Air Support Group Supervisor		Tim Shiffer
6. Logistics Section:		Air Tactical Group Supervisor		
Chief	Tim Fitzgerald	Helibase Manager		David Lindsay
Deputy Chief				
Supply Unit	Mike Worford	8. Finance/Administration Section:		
Facilities Unit	Heather Thurston / Josh Randol (T)	Chief	Tiffany Tracy	
Ground Support Unit	Steve Langston / Matt Bellows	Deputy Chief		
Communications Unit	Kevin Cox	Time Unit	Matt Rea / Heather Constable (T)	
Medical Unit	Josh Staley	Procurement Unit	Tammy Nolan	
Motel Unit	Angel Hendrie	Comp/Claims Unit	Bud Sullins	
Food Unit	Steve Chapin	Cost Unit	Mike Kennefic	
Prepared By: Name:	David Wood	Position/Title:	PS-2	Signature: 
ICS 203		Date/Time:	8/26/2021 2300 hours	

FIRE BEHAVIOR FORECAST

FORECAST NUMBER: 10	TYPE OF FIRE: Wildland Fire
FIRE NAME: Monument	OPERATIONAL PERIOD: 24hr 08-27-2021
DATE ISSUED: 08-26-2021	TIME ISSUED: 2100
UNIT: SHU	SIGNED: Troy Velin - FBAN

INPUTS

WEATHER SUMMARY

Wind Shift to become more Northerly
See Incident Weather Forecast in IAP

FIRE BEHAVIOR:

GENERAL: **Fuels and Fire Behavior Advisory issued 07-17-2021**

Topography is steep and rugged ranging from 2000' in the valleys and 6000' on higher peaks. Slope in many instances is 100%. This terrain promotes fire growth through roll out and slope reversal. Many of the drainages align with predominant wind patterns for the region. The Trinity River corridor is a major drainage that funnels wind primarily East and West. There are major bends in the river that will create eddy's and swirling winds.

Fuels in the fire area range from timber and timber understory in higher elevations, heavy brush in mid elevations and grass oak woodland in valley bottoms. Extreme Drought this year has stressed fuels to critical fuel moistures. 1000 hr fuels recorded July 15 were 7%, LFM in brush was 93%. The dryness of the fuels in the area are a major contributor to the Monument Fire's growth.

Fires in this area commonly have large growth periods of 1 to 2 days usually aided by windy conditions. Following the large growth periods there are usually several days of slowed growth due to heavy smoke inversions. This has been the scenario for the Monument Fire. August is generally hot and dry with long burn periods that extend well into the night.

SPECIFIC:

Branch 20

Smoldering fire interior of the line. Monitor for roll out. North Northwest winds will increase winds along Dutch Creek rd today.

Branch 30

Winds will become more northerly today. Aligned drainages in NN such as Carr Creek, Alder Gulch, Garden Gulch and Little Barker creek will have an enhanced opportunity for battling winds at the ridges and possible downslope winds late in the afternoon. The SW portion of RR will get another dose of battling wind at the ridge top. Winds will be parallel with the West dozer line at times, monitor for spots. Group torching and short-range spotting observed yesterday. Post a look out to monitor fire activity in BR 40 DIV Z.

South Zone Contingency

Be cautious operating equipment in critically dry fuels.

AIR OPERATION:

Smoke is expected to be over the fire area all day today.

SAFETY

Moisture content in dead fuels is a key component to fire spread. 1 hr time-lag fuels are the easiest to estimate in the field. A good rule of thumb is to divide the observed relative humidity by 5. That value is the approximate fuel moisture of fine dead fuels. Annual grass does not carry fire well when it is above 11%. Using this rule of thumb, we can estimate that the fuel moisture of annual grass on a 25% rh day will be approximately 5% and will readily carry fire. Take observations often and apply them to your situational awareness.



Monument South Zone Fire Weather Forecast



FORECAST NO: 9
PREDICTION FOR: Fri 0700 to Sat 0700
SHIFT DATE: August 27, 2021
FORECAST ISSUED: 2000 PDT August 26, 2021

NAME OF FIRE: Monument Fire
UNIT: SHF
SIGNED: *Royce Fontenot*
 Incident Meteorologist

WEATHER DISCUSSION: Warming temperatures will be moderated today by the return of areas of dense smoke. A northwesterly flow will remain over the fire, however winds will generally be terrain driven. These terrain driven winds may be locally enhanced in areas with partial clearing. Humidity values will fall into the mid-teens with higher values expected under dense smoke. Humidity values will begin to recover to a moderate level shortly after sunset in lower elevations and after midnight along ridgetops.

FRIDAY:

WEATHER: Smoke with areas of partial clearing in the afternoon.
MAX TEMPERATURES: 87-92°F full sunshine, 74-83°F elsewhere under smoke.
MIN HUMIDITY: 13-25%, highest values where heavy smoke lingers.
20 FT WINDS: Ridges: NW-N 4-6 mph becoming 7-12 mph with gusts 15 mph by 1500.
 Drainages: Light winds in the morning. Branch 20: Upcanyon 4-7 mph gusts 12 mph by 1600.
 Branch 30: Div NN: NE/Down canyon winds 4-7 mph G 10 mph by 1500
 Div RR: Variable winds 4-7 mph G 10 mph by 1500
LAL: 1
CWR: 0%
HAINES INDEX: 4
MIXING HEIGHT: 800 ft AGL increasing to 7,000 ft AGL in the afternoon.
TRANSPORT WIND: NNW 5-10 mph.

FRIDAY NIGHT:

WEATHER: Smoke, dense at times with low visibility.
MIN TEMPERATURES: 48-58°F warmest in thermal belts above 1000 feet.
MAX HUMIDITY: Valley 40-50%. Ridges 35-45%
20 FT WINDS: Ridges: NW-N 7-12 mph with gusts 15 mph becoming light N-NE after midnight.
 Drainages: Winds becoming NE or terrain driven 2-4 mph by midnight.
LAL: 1
CWR: 0%
HAINES INDEX: 2
MIXING HEIGHT: 7,000 ft AGL decreasing to 900 ft AGL overnight.
TRANSPORT WIND: NE 5-10 mph.

Saturday/Sunday Outlook: Dense smoke is expected through the weekend. Temperatures remain hot on Saturday with a slight cooling on Sunday. Humidity values will fall into the low-teens with poor recoveries at night. Winds are expected to shift southwesterly on Sunday and remain light.

RAWS Observations

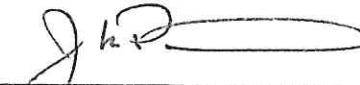

Submit Observation





Monument South Zone RISK ANALYSIS (ICS 215a)



DIV	HAZARDOUS ACTIONS/CONDITIONS	MITIGATIONS / WARNINGS / REMEDIES
ALL	FATIGUE/DEHYDRATION	<p>Be alert for signs of fatigue and take breaks as necessary. Monitor incoming resources for levels of fatigue. Drink water before, during and after shifts, up to 1.5 gal. per shift. Be alert for signs of heat stress in yourself and others. Eat small meals often and when possible. Find shade when you can. Drink electrolyte drinks at a 2 water to 1 sport drink ratio.</p>
ALL	HAZARD TREES/TREE FELLING SAFETY	<p>Look up, look down, look around when entering timber. Identify and isolate the area to provide for safety. Flag and make proper notifications. Do not leave incomplete falling operations. Monitor when mopping up. Watch where you park. Size up and mitigate concerns, work within your qualifications.</p>
ALL	COMPLACENCY	<p>Don't underestimate the task at hand. Wear full PPE while on the line. Everyone should be briefed on the conditions and circumstances regarding the fire and their assignments per the IRPG. Today is different than last shift, even if in the same area.</p>
RR NN	INCREASING FIRE BEHAVIOR	<p>Know your LCES and maintain Situational Awareness. Use experienced Lookouts. Monitor weather for changes in the wind, temp, and RH during the shift. Have a contingency plan with established decision points and safety zones.</p>
ICP Ground Support	GENERAL TRAFFIC	<p>Watch out for pedestrian and vehicle congestion. Provide spotters when backing or driving in tight places. Adhere to the 5-mph speed limit while in base camp.</p>
RR NN	AIRCRAFT OPERATIONS	<p>Monitor air-to-ground frequency, they are your eyes in the sky. Use air-to-ground frequency to communicate with aircraft. Clear the area for incoming water and retardant drops.</p>
RR NN	HEAVY EQUIPMENT	<p>Watch for rolling material avoid working below heavy equipment. Monitor safe working distances provide adequate working space. Utilize communication with the operators, stop if poor visibility.</p>
ALL	WEATHER CHANGES	<p>Monitor for increased temperatures on the fireline. Manage preventing heat illnesses. Find shade when you can. Expect erratic winds. Communicate weather changes on the fireline.</p>
ALL	DRIVING HAZARDS	<p>Complete appropriate DOT daily vehicle inspection. Slow Down! Long travel times to the line, stay alert. Stop if fatigued. Drive defensively! Drive with headlights and seatbelts on. Narrow roads with limited passing room. Expect roads to deteriorate over the shift.</p>
ICP	COVID 19	<p>Wear a mask when applicable. Utilize hand sanitizer and wash hands frequently. Maintain social distancing. Disinfect apparatus and coolers frequently. Adhere to local, state, and federal Covid-19 guidelines. Advise supervisor if you feel sick.</p>
ALL	ENVIRONMENTAL HAZARDS	<p>Maintain situational awareness for illegal activity and hunters. Wash poison oak off hands and clothes. Harvest time in certain areas of the fire. Increase your situational awareness.</p>
DD	Repopulation	<p>Hard road closure has been lifted and repopulation has occurred in the Dutch Creek Road area of Junction City. Watch for vehicle and pedestrian traffic</p>
DATE PREPARED: August 26, 2021 Operational Period August 27, 0700-0700		Approved: Jack Piccinini – SOF1 Cal Fire IMT 5 
		Approved: Jim Hudson-Operations Chief 



Monument Fire South Zone
HEALTH AND SAFETY MESSAGE



INCIDENT: Monument – CA SHF-001187

DATE: August 27, 2021

TIME: 0700-0700

24 HOUR SAFETY EMPHASIS
HEAT ILLNESS – OPERATE WITHIN YOUR LIMITS - LEADERSHIP

HIGH TEMPERATURES – HEAT ILLNESS

Watch Out

- Profuse sweating
- Weakness, Headache
- Muscle cramps, nausea, and vomiting

Mitigation

- Provide for cooling of the bodies core temperature
 - Provide Shade, rotate crews into air-conditioned vehicles when possible
 - Try to facilitate evaporated cooling of the body
- Provide significant periods of rest
- Hydrate with **cold** fluids when possible

OPERATE WITHIN YOUR LIMITS

Watch Out

- **Hot weather** can lead to dehydration, heat illness, serious medical emergencies
- **Working beyond capabilities** can lead to a failure to identify risks
- **Unsafe vehicle operation** can lead to accidents and serious/catastrophic injury

Mitigation

- Proper nutrition, rest and hydration reduces fatigue and exhaustion emergencies
- Know your qualification level and be honest about capabilities
- Slow down, maintain a safe distance, turn on lights, allow for extra travel time

LEADERSHIP

IT'S THE FOUNDATION TO SAFETY

Watch Out

- Crews sacrificing safety of the sake of the task
- Ignoring basic safety policies and protocols
- Things falling through the cracks, breakdown in communications, no clear plan

Mitigation

- Leaders hold themselves accountable to doing the right thing
- Hold each other accountable to doing the right thing
- Leaders' lookout for one another and take care of one another

Each Safety Message is designed for a daily Tailgate Safety discussion

REMAIN FIRE FOCUSED AND COVID-19 AWARE

ASSIGNMENT LIST (ICS 204 WF)

CONTROLLED UNCLASSIFIED
INFORMATION//BASIC

1. Incident Name: <p style="text-align: center;">Monument Fire South Zone</p>	2. Operational Period: Date From: 08/27/21 Date To: 08/28/21 Time From: 0700 Time To: 0700	3. Branch Division <p style="text-align: center;">20 DD</p>
4. Operations Personnel:		Page 1 of 1 Delta-Delta

Operations Section Chief: Andy Turner	Night Ops: Steven Ward
Branch Director: Robert Reynolds (T)	Branch Safety:
Division/Group Supervisor: Darell Johnson (T)	Air Attack:

5. Resources Assigned:		** Resources Below in Bold are 12 Hour **					
Resource Identifier	ALS	LWD	Leader	Personnel	Request #	Hours	Reporting Location
STA LAC 1135A			EDWARD FOSTER	21	E-10242	0700-0700	DUTCH CRK X HWY 299
STC						0700-0700	DUTCH CRK X HWY 299
STG 9254G						0700-0700	DUTCH CRK X HWY 299
W/T PVT E-10117 MCGARR → to NN			DENNIS MCGARR	1	E-10117	0700-1900	DUTCH CRK X HWY 299
W/T PVT E-10123 CNH			JAMES CALDWELL	1	E-10123	0700-1900	DUTCH CRK X HWY 299
W/T PVT E-10124 IGRAM → to MRO			RYAN GRABLE	1	E-10124	0700-1900	DUTCH CRK X HWY 299
W/T PVT E-10132 GREER			IRA GREER	2	E-10132	0700-0700	DUTCH CRK X HWY 299
W/T PVT E-10452 CSURE			RON LANDSBURG	2	E-10452	0700-1900	DUTCH CRK X HWY 299
FALM PVT CAL VEG			DEREK STANDLEE	1	O-10357	0700-1900	DUTCH CRK X HWY 299
STG 9146G							

6. Work Assignments:
Mop up 300 ft from control lines.
Fall hazard trees that threaten control lines.
Hold fire within planned controlled lines.

7. Special Instructions:
Repopulation and the hard closure have been lifted in the Junction City / Dutch Creek road area. Please increase awareness.
For emergency fueling please work with your Division to contact Monument fueling on command.

8. Communications

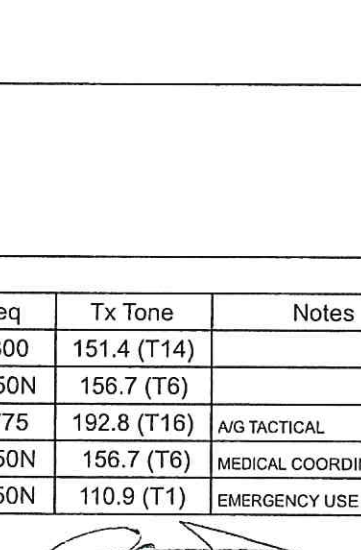
Name	Ch	Function	Rx Freq	Rx Tone	Tx Freq	Tx Tone	Notes
CDF C2	1	COMMAND	151.2650	103.5 (T8)	159.3300	151.4 (T14)	
VFIRE 22	3	TACTICAL	154.2650N	156.7 (T6)	154.2650N	156.7 (T6)	
CDF T25	14	AIR TO GROUND	159.2775	192.8 (T16)	159.2775	192.8 (T16)	A/G TACTICAL
CALCORD	15	MEDICAL	156.0750N	156.7 (T6)	156.0750N	156.7 (T6)	MEDICAL COORDINATION
GUARD 26	16	AIRGUARD	168.6250N		168.6250N	110.9 (T1)	EMERGENCY USE ONLY

9. Prepared by: Name: K O'Neil RESL Signature:

ICS 204 Date/Time: 8/26/2021 2200 Personnel Count: 29

ASSIGNMENT LIST (ICS 204 WF)

CONTROLLED UNCLASSIFIED
INFORMATION//BASIC

1. Incident Name: <p style="text-align: center;">Monument Fire South Zone</p>		2. Operational Period: Date From: 08/27/21 Date To: 08/28/21 Time From: 0700 Time To: 0700				3. Branch Division <p style="text-align: center;">20 HH</p>	
						Page 1 of 1 Hotel-Hotel	
4. Operations Personnel:							
Operations Section Chief: Andy Turner				Night Ops: Steven Ward			
Branch Director: Robert Reynolds (T)				Branch Safety:			
Division/Group Supervisor: Ryan Pack				Air Attack:			
5. Resources Assigned:		** Resources Below in Bold are 12 Hour **					
Resource Identifier	ALS	LWD	Leader	Personnel	Request #	Hours	Reporting Location
STC						0700-0700	HWY 3 X MAXWELL CRK
STC						0700-0700	HWY 3 X MAXWELL CRK
T/F XTR 3286			COLBERT		E-10197	0700-0700	HWY 3 X MAXWELL CRK
T/F XAL 2020			KENT CARLEN	16	E-10224	0700-0700	HWY 3 X MAXWELL CRK
ENG LEC ROCKY MTN 1 → to NN			VICTOR MADPLUME	3	E-10389	0700-0700	HWY 3 X MAXWELL CRK
ENG PVT GCT 80			KEN DELYRIA	3	E-10506	0700-1900	HWY 3 X MAXWELL CRK
CRW						0700-0700	HWY 3 X MAXWELL CRK
CRW						0700-0700	HWY 3 X MAXWELL CRK
DOZ PVT E-10095 MN MILLER			LELLO MARTINEZ	2	E-10095	0700-0700	HWY 3 X MAXWELL CRK
W/T PVT E-10115 GRISWOLD			GARY GRISWOLD	2	E-10115	0700-0700	HWY 3 X MAXWELL CRK
W/T PVT E-10119 CLASS 1			DARRIN ENOCH	2	E-10119	0700-0700	HWY 3 X MAXWELL CRK
W/T PVT E-10122 FIRE WATER			DANA CLEER	1	E-10122	0700-1900	HWY 3 X MAXWELL CRK
W/T PVT E-10128 ON SITE			RICK WALTON	1	E-10128	0700-1900	HWY 3 X MAXWELL CRK
W/T PVT E-10129 GASSAWAY			JULIO LOPEZ	2	E-10129	0700-0700	HWY 3 X MAXWELL CRK
W/T PVT E-10133 PANKEY			CHAD PANKEY	2	E-10133	0700-0700	HWY 3 X MAXWELL CRK
FALM PVT HUGHES				2	0-10359	0700-1900	HWY 3 X MAXWELL CRK
REMS 2 HIGH PRIORITY				1	O-10035	0700-1900	HWY 3 X MAXWELL CRK
6. Work Assignments: Fall hazard trees that threaten control lines. Mop up 200 ft. in from control lines. Hold fire within established control lines.							
7. Special Instructions: For emergency fueling please work with your Division to contact Monument fueling on command.							
8. Communications							
Name	Ch	Function	Rx Freq	Rx Tone	Tx Freq	Tx Tone	Notes
CDF C2	1	COMMAND	151.2650	103.5 (T8)	159.3300	151.4 (T14)	
VFIRE 23	4	TACTICAL	154.2950N	156.7 (T6)	154.2950N	156.7 (T6)	
CDF T25	14	AIR TO GROUND	159.2775	192.8 (T16)	159.2775	192.8 (T16)	AVG TACTICAL
CALCORD	15	MEDICAL	156.0750N	156.7 (T6)	156.0750N	156.7 (T6)	MEDICAL COORDINATION
GUARD 26	16	AIRGUARD	168.6250N		168.6250N	110.9 (T1)	EMERGENCY USE ONLY
9. Prepared by: Name:		K O'Neil		RESL		Signature: 	
ICS 204		Date/Time: 8/26/2021 2200				Personnel Count: 37	

ASSIGNMENT LIST (ICS 204 WF)

CONTROLLED UNCLASSIFIED
INFORMATION//BASIC

1. Incident Name: Monument Fire South Zone	2. Operational Period: Date From: 08/27/21 Date To: 08/28/21 Time From: 0700 Time To: 0700	3. Branch Division 30 NN
-----------------------------------------------------------------	---------------------------------------------------------------------------------------------------------------	---------------------------------------------------------------------

Page 1 of 2 November-November

4. Operations Personnel:	
Operations Section Chief: Andy Turner	Night Ops: Steven Ward
Branch Director: Mark League / Jeffrey Loveless (T)	Branch Safety:
Division/Group Supervisor: John Capen (T)	Air Attack:

5. Resources Assigned:		** Resources Below in Bold are 12 Hour **					
Resource Identifier	ALS	LWD	Leader	Personnel	Request #	Hours	Reporting Location
STA OES 2800A			CHRIS HARPER	21	E-10353	0700-0700	Bear Creek
STC AEU 9270C			CHRIS PLACKE	17	E-10077	0700-0700	Bear Creek
STC HUU 9121C			DRIGGS, IVAN	16	E-10180	0700-0700	Bear Creek
STC LNU 9141C → to RR-			JIM CHRISTISON	17	E-10534	0700-0700	Bear Creek
STC SHU 9242C ← from RR						0700-0700	Bear Creek
STC						0700-0700	Bear Creek
STF						0700-0700	Bear Creek
STF						0700-0700	Bear Creek
STF						0700-0700	Bear Creek
STF						0700-0700	Bear Creek
T/F XLF 1341			JIM UNDERWOOD	17	E-10355	0700-0700	Bear Creek
ENG MDC 1			STEVE FINNERY	3	E-10376	0700-1900	Bear Creek
ENG-OR-IFC			CASEY BROWN	3	E-10392	0700-1900	Bear Creek
ENG CLC BR37			BRAD BOLTON	4	E-10499	0700-0700	Bear Creek
ENG PVT E111			RICK CAMPBELL	3	E-10523	0700-1900	Bear Creek
STG BDU 9351G			JOSEPH HATCH	32	C-10004	0700-0700	Bear Creek
STG						0700-0700	Bear Creek
STG						0700-0700	Bear Creek

6. Work Assignments:
 Construct control lines as direct as possible.
 Prepare indirect control lines for possible firing operations.
 Fall hazard trees and trees that threaten control lines.
 Mop up 100 ft. in from control lines.

7. Special Instructions:
 For emergency fueling please work with your Division to contact Monument fueling on command.
 Roads are becoming soft please stay on the high side of the road.
 REAF Dillion Sheedy and REAF Cynthia Armentrout will be working in Branch 30 Division NN.

8. Communications

Name	Ch	Function	Rx Freq	Rx Tone	Tx Freq	Tx Tone	Notes
CDF C2	1	COMMAND	151.2650	103.5 (T8)	159.3300	151.4 (T14)	
VFIRE 24	5	TACTICAL	154.2725N	156.7 (T6)	154.2725N	156.7 (T6)	
CDF T25	14	AIR TO GROUND	159.2775	192.8 (T16)	159.2775	192.8 (T16)	A/G TACTICAL
CALCORD	15	MEDICAL	156.0750N	156.7 (T6)	156.0750N	156.7 (T6)	MEDICAL COORDINATION
GUARD 26	16	AIRGUARD	168.6250N		168.6250N	110.9 (T1)	EMERGENCY USE ONLY

9. Prepared by: Name:	K O'Neil	RESL	Signature:
------------------------------	----------	------	------------

ICS 204	Date/Time: 8/26/2021 2200	Personnel Count: 133
---------	---------------------------	----------------------

ASSIGNMENT LIST (ICS 204 WF)

CONTROLLED UNCLASSIFIED
INFORMATION/BASIC

1. Incident Name: <p style="text-align: center;">Monument Fire South Zone</p>	2. Operational Period: Date From: 08/27/21 Date To: 08/28/21 Time From: 0700 Time To: 0700	3. Branch Division <p style="text-align: center;">30 NN</p>
----------------------------------------------------------------------------------------------------	---------------------------------------------------------------------------------------------------------------------------	-----------------------------------------------------------------------------------------------------------------------------

4. Operations Personnel: Page 2 of 2 November-November

Operations Section Chief: Andy Turner	Night Ops: Steven Ward
Branch Director: Mark League / Jeffrey Loveless (T)	Branch Safety:
Division/Group Supervisor: John Capen (T)	Air Attack:

5. Resources Assigned:		** Resources Below in Bold are 12 Hour **					
Resource Identifier	ALS	LWD	Leader	Personnel	Request #	Hours	Reporting Location
DOZ MVU 3345			MARTY ADAMS	2	E-10543	0700-0700	Bear Creek
DOZ PVT E-10091 NORTH			MIKE SALTERS	4	E-10091	0700-0700	Bear Creek
DOZ PVT E-10100 SIERRAVILLE			CHASE HAUBER	3	E-10100	0700-0700	Bear Creek
W/T PVT E-10004 WATER			MICHAEL SISSON	1	E-10004	0700-1900	Bear Creek
W/T PVT E-10010 AMERICAN			VINCENT REALI	1	E-10010	0700-1900	Bear Creek
W/T PVT E-10114 TRAHAN			ROBERT LATHAM	1	E-10114	0700-1900	Bear Creek
W/T PVT E-10125 JOHNSON			KEN JOHNSON	2	E-10125	0700-0700	Bear Creek
W/T PVT E-10127 CLOVIS			GEORGE MCDONOUGH	1	E-10127	0700-0700	Bear Creek
W/T PVT E-10201 WELLS			JEFF WELLS	1	E-10201	0700-0700	Bear Creek
W/T PVT E-10450 AMERICAN			VINCENT REALI	2	E-10450	0700-0700	Bear Creek
MAST PVT E-10155 BUNDYS			NICK BUNDY	1	E-10155	0700-1900	Bear Creek
MAST PVT E-10356 RJW			WADE FIELDS	1	E-10356	0700-1900	Bear Creek
FALM PVT CTS VENTURES				2	O-10358	0700-1900	Bear Creek
REMS 1 MONRONGO			BEN KRONE	4	O-10033.1	0700-0700	Bear Creek
SOFR Williams						0700-0700	Bear Creek
SOFR Craddock						0700-0700	Bear Creek
W/T PVT E-10117 ← from DD							
DOZ PVT E-10102 ← from S. Conti							

6. Work Assignments:

Construct control lines as direct as possible. **ENG LEC Rocky ← from HH**
 Insert hose lay to support firing operation. **ENG G12 E-10554 ← from RR**
 Fall hazard trees and trees that threaten control lines. **ENG Allied 40 E-10525 ← from RR**
 Mop up 100 ft. in from control lines. **ENG Inbound E-10527 ← from RR**

7. Special Instructions:

For emergency fueling please work with your Division to contact Monument fueling on command.
 Roads are becoming soft please stay on the high side of the road.
 REAF Dillion Sheedy and REAF Cynthia Armentrout will be working in Branch 30 Division NN.

8. Communications

Name	Ch	Function	Rx Freq	Rx Tone	Tx Freq	Tx Tone	Notes
CDF C2	1	COMMAND	151.2650	103.5 (T8)	159.3300	151.4 (T14)	
VFIRE 24	5	TACTICAL	154.2725N	156.7 (T6)	154.2725N	156.7 (T6)	
CDF T25	14	AIR TO GROUND	159.2775	192.8 (T16)	159.2775	192.8 (T16)	A/G TACTICAL
CALCORD	15	MEDICAL	156.0750N	156.7 (T6)	156.0750N	156.7 (T6)	MEDICAL COORDINATION
GUARD 26	16	AIRGUARD	168.6250N		168.6250N	110.9 (T1)	EMERGENCY USE ONLY

9. Prepared by: Name: K O'Neil RESL Signature:

ICS 204 Date/Time: 8/26/2021 2200 Personnel Count: 26

NIMS IAP

CONTROLLED UNCLASSIFIED INFORMATION/BASIC

ASSIGNMENT LIST (ICS 204 WF)

CONTROLLED UNCLASSIFIED
INFORMATION//BASIC

1. Incident Name: Monument Fire South Zone	2. Operational Period: Date From: 08/27/21 Date To: 08/28/21 Time From: 0700 Time To: 0700	3. Branch Division 30 RR
-----------------------------------------------------------------	---------------------------------------------------------------------------------------------------------------	-------------------------------------------------------------

4. Operations Personnel:		Page 1 of 3 Romeo-Romeo
Operations Section Chief: Andy Turner	Night Ops: Steven Ward	
Branch Director: Mark League / Jeffery Loveless (T)	Branch Safety:	
Division/Group Supervisor: Clint Swensen	Air Attack:	

5. Resources Assigned:		** Resources Below in Bold are 12 Hour **					
Resource Identifier	ALS	LWD	Leader	Personnel	Request #	Hours	Reporting Location
STA OES 4804A			TAYLOR, JEFF	18	E-10243	0700-0700	DP34
STC SHU 9242G → to NN			TIM WHITEHURST	16	E-10183	0700-0700	DP34
STC OES 6808C			STEVE KEAN	19	E-10250	0700-0700	DP34
STC LNU 9141C ← from NN						0700-0700	DP34
STC						0700-0700	DP34
STC						0700-0700	DP34
STC						0700-0700	DP34
STC						0700-0700	DP34
STC						0700-0700	DP34
STC						0700-0700	DP34
STF						0700-0700	DP34
STF						0700-0700	DP34
ENG PVT NM 805			BRETT BOWER	1	E-10307	0700-1900	DP34
ENG XTR HYF 3161			LEROY	2	E-10350	0700-0700	DP34
ENG PVT B-61			NICK OPAHUANG	3	E-10390	0700-1900	DP34
ENG BRS 464			JAMES MARTINEZ	3	E-10507	0700-1900	DP34
ENG PVT MTN CAMEL			SHAWN WIPPERT	3	E-10522	0700-1900	DP34
STG LNU 9147G			JOSH LAW	36	C-10012	0700-0700	DP34
STG SHU 9240G						0700-0700	DP34

6. Work Assignments:
 Construct control lines as direct as possible.
 Mop up 100 ft. in from control lines.
 Fall hazard trees and trees that threaten control lines.
 Cut out islands within 1/4 mile of the perimeter.

7. Special Instructions:
 For emergency fueling please work with your Division to contact Monument fueling on command.
 Roads are becoming soft please stay on the high side of the road.
 REAF Andrew Christie and REAF Rudy Uribe will be working in Branch 30 Division RR.

8. Communications

Name	Ch	Function	Rx Freq	Rx Tone	Tx Freq	Tx Tone	Notes
CDF C2	1	COMMAND	151.2650	103.5 (T8)	159.3300	151.4 (T14)	
CDF T26	6	TACTICAL	159.2925N	192.8 (T16)	159.2925N	192.8 (T16)	
CDF T25	14	AIR TO GROUND	159.2775	192.8 (T16)	159.2775	192.8 (T16)	A/G TACTICAL
CALCORD	15	MEDICAL	156.0750N	156.7 (T6)	156.0750N	156.7 (T6)	MEDICAL COORDINATION
GUARD 26	16	AIRGUARD	168.6250N		168.6250N	110.9 (T1)	EMERGENCY USE ONLY

9. Prepared by: Name: K O'Neil RESL

Signature:

ICS 204 Date/Time: 8/26/2021 2200 Personnel Count: 101

NIMS IAP

CONTROLLED UNCLASSIFIED INFORMATION//BASIC

ASSIGNMENT LIST (ICS 204 WF)

CONTROLLED UNCLASSIFIED
INFORMATION//BASIC

1. Incident Name: <p style="text-align: center;">Monument Fire South Zone</p>	2. Operational Period: Date From: 08/27/21 Date To: 08/28/21 Time From: 0700 Time To: 0700	3. Branch Division <p style="text-align: center;">30 RR</p>
----------------------------------------------------------------------------------------------------	---------------------------------------------------------------------------------------------------------------	-----------------------------------------------------------------------------------------------

4. Operations Personnel: Page 2 of 3 Romeo-Romeo

Operations Section Chief: Andy Turner	Night Ops: Steven Ward
Branch Director: Mark League / Jeffrey Loveless (T)	Branch Safety:
Division/Group Supervisor: Clint Swensen	Air Attack:

5. Resources Assigned:		** Resources Below in Bold are 12 Hour **					
Resource Identifier	ALS	LWD	Leader	Personnel	Request #	Hours	Reporting Location
STG						0700-0700	DP 34
STG						0700-0700	DP 34
CRW LNU DELTA 3			JASE INDREBO	15	C-10010	0700-0700	DP 34
CRW						0700-0700	DP 34
CRW						0700-0700	DP 34
DOZ NEU 2340			KATY MCMANUS	2	E-10164	0700-0700	DP 34
DOZ TGU 2540			RED BLUFF	3	E-10546	0700-0700	DP 34
DOZ PVT E-10090 T & S			SEBASTIAN MAYNARD	2	E-10090	0700-0700	DP 34
DOZ PVT E-10092 HERTZIG			DON CALDWELL	2	E-10092	0700-0700	DP 34
DOZ PVT E-10097 JOHNSON			MATT JOHNSON	2	E-10097	0700-1900	DP 34
DOZ PVT E-10098 EJ PIOLIT			EDWARD PONTE	2	E-10098	0700-0700	DP 34
DOZ PVT E-10104 A&CC			CLYTON MOORE	2	E-10104	0700-0700	DP 34
DOZ PVT E-10106 K5 RANCH			JAMES KLAUER	2	E-10106	0700-0700	DP 34
DOZ PVT E-10107 K5 RANCH			MITCH GILS	2	E-10107	0700-0700	DP 34
DOZ PVT E-10259 DIRECT			KEVIN FOX	2	E-10259	0700-0700	DP 34
DOZ PVT E-10439 SCHREDER			CORY HALL	4	E-10439	0700-0700	DP 34
W/T HYF 3141			LEROY	2	E-10349	0700-0700	DP 34
W/T PVT E-10006 BURGESS			DAVID BURGESS	1	E-10006	0700-0700	DP 34

N/S

6. Work Assignments:
 Construct control lines as direct as possible.
 Mop up 100 ft. in from control lines.
 Fall hazard trees and trees that threaten control lines.
 Cut out islands within 1/4 mile of the perimeter.

7. Special Instructions:
 For emergency fueling please work with your Division to contact Monument fueling on command.
 Roads are becoming soft please stay on the high side of the road.
 REAF Andrew Christie and REAF Rudy Uribe will be working in Branch 30 Division RR.

8. Communications

Name	Ch	Function	Rx Freq	Rx Tone	Tx Freq	Tx Tone	Notes
CDF C2	1	COMMAND	151.2650	103.5 (T8)	159.3300	151.4 (T14)	
CDF T26	6	TACTICAL	159.2925N	192.8 (T16)	159.2925N	192.8 (T16)	
CDF T25	14	AIR TO GROUND	159.2775	192.8 (T16)	159.2775	192.8 (T16)	A/G TACTICAL
CALCORD	15	MEDICAL	156.0750N	156.7 (T6)	156.0750N	156.7 (T6)	MEDICAL COORDINATION
GUARD 26	16	AIRGUARD	168.6250N		168.6250N	110.9 (T1)	EMERGENCY USE ONLY

9. Prepared by: Name: K O'Neil RESL Signature:

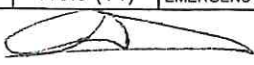
ICS 204 Date/Time: 8/26/2021 2200 Personnel Count: 43

NIMS IAP

CONTROLLED UNCLASSIFIED INFORMATION//BASIC

ASSIGNMENT LIST (ICS 204 WF)

CONTROLLED UNCLASSIFIED
INFORMATION//BASIC

1. Incident Name: Monument Fire South Zone		2. Operational Period: Date From: 08/27/21 Date To: 08/28/21 Time From: 0700 Time To: 0700		3. Branch 30		Division RR	
4. Operations Personnel:				Page 3 of 3		Romeo-Romeo	
Operations Section Chief: Andy Turner			Night Ops: Steven Ward				
Branch Director: Mark League / Jeffrey Loveless (T)			Branch Safety:				
Division/Group Supervisor: Clint Swensen			Air Attack:				
5. Resources Assigned:		** Resources Below in Bold are 12 Hour **					
Resource Identifier	ALS	LWD	Leader	Personnel	Request #	Hours	Reporting Location
W/T PVT E-10116 5 STAR			ASA BENNETT	1	E-10116	0700-0700	Dp-34
W/T PVT E-10118 DUNLAP			DAVID POLE	2	E-10118	0700-0700	Dp-34
W/T PVT E-10120 CLASS 1			CRAIG TARELLO	1	E-10120	1900-0700	Dp-34
W/T PVT E-10130 H2O			GARRETT MCINNIS	2	E-10130	0700-0700	Dp-34
W/T PVT E-10276 D&G			GARY BROCK	2	E-10276	0700-0700	Dp-34
W/T PVT E-10281 CONCRETE			SCOTT HEAD	2	E-10281	0700-0700	Dp-34
MAST PVT E-10437 SUNRISE → to Conti			BRANDON WILLIAMS	2	E-10437	0700-1900	Dp-34
MAST PVT E-10455 FIGAS → to Conti			BOB FIGAS	1	E-10455	0700-1900	Dp-34
HEQB CRANDALL			KEVIN CRANDALL	1	O-10330	0700-0700	Dp-34
FALM PVT TREEWORX				1	O-10136	0700-1900	Dp-34
FALM PVT NIGHT FIRE			ANDREW DUROCHER	1	O-10137	0700-1900	Dp-34
FALM PVT BUNDY'S					O-10139	0700-1900	Dp-34
FALM PVT CAL VEG				1	O-10360	0700-1900	Dp-34
REMS 5 HIGH PRIORITY - Weather				1	O-10035	0700-1900	Dp-34
REMS 7 HIGH PRIORITY - Weather				1	O-10035	0700-1900	Dp-34
SOFR SOLAK, JASON				1	O-10394	0700-0700	Dp-34
SOFR Bauer						0700-0700	Dp-34
FOBS Rhoades							
6. Work Assignments:		<p>Construct control lines as direct as possible.</p> <p>Mop up 100 ft. in from control lines.</p> <p>Fall hazard trees and trees that threaten control lines.</p> <p>Cut out islands within 1/4 mile of the perimeter.</p>					
		<p style="color: red;">FOBS Lyle ENG PVT Rogue Basin E-10526 ENG PVT Rocky PT 324 E-10649</p>					
7. Special Instructions:							
<p>For emergency fueling please work with your Division to contact Monument fueling on command.</p> <p>Roads are becoming soft please stay on the high side of the road.</p> <p>REAF Andrew Christie and REAF Rudy Uribe will be working in Branch 30 Division RR.</p>							
8. Communications							
Name	Ch	Function	Rx Freq	Rx Tone	Tx Freq	Tx Tone	Notes
CDF C2	1	COMMAND	151.2650	103.5 (T8)	159.3300	151.4 (T14)	
CDF T26	6	TACTICAL	159.2925N	192.8 (T16)	159.2925N	192.8 (T16)	
CDF T25	14	AIR TO GROUND	159.2775	192.8 (T16)	159.2775	192.8 (T16)	A/G TACTICAL
CALCORD	15	MEDICAL	156.0750N	156.7 (T6)	156.0750N	156.7 (T6)	MEDICAL COORDINATION
GUARD 26	16	AIRGUARD	168.6250N		168.6250N	110.9 (T1)	EMERGENCY USE ONLY
9. Prepared by: Name:		K O'Neil		RESL		Signature: 	
ICS 204		Date/Time: 8/26/2021 2200				Personnel Count: 20	

NIMS IAP

CONTROLLED UNCLASSIFIED INFORMATION//BASIC

ASSIGNMENT LIST (ICS 204 WF)

CONTROLLED UNCLASSIFIED
INFORMATION//BASIC

1. Incident Name: Monument Fire South Zone	2. Operational Period: Date From: 08/27/21 Date To: 08/28/21 Time From: 0700 Time To: 0700	3. Branch Division Contingency South Cont 1
-----------------------------------------------------------------	---------------------------------------------------------------------------------------------------------------	-------------------------------------------------------------------------

Page 1 of 2

4. Operations Personnel:	
Operations Section Chief: Andy Turner	Night Ops: Steven Ward
Branch Director: Bryan Farrell 12hr	Branch Safety:
Division/Group Supervisor: Levi Randolph (T) 12hr	Air Attack:

5. Resources Assigned:	** Resources Below in Bold are 12 Hour **						
Resource Identifier	ALS	LWD	Leader	Personnel	Request #	Hours	Reporting Location
ENG J3 CONTRACTING			SHAWN MODICA	3	E-10308	0700-1900	ICP
CRW						0700-0700	ICP
DOZ SHU 2440			AARON FLOURNOY	4	E-10204	0700-0700	ICP
DOZ PVT E-10093 SGS			ERIC HEFTE	1	E-10093	0700-1900	ICP
DOZ PVT E-10099 MULLER			CHARLES MULLER	2	E-10099	0700-0700	ICP
DOZ PVT E-10101 MORRIS			MATTHEW CRIPPEN	1	E-10101	0700-1900	ICP
DOZ PVT E-10108 SAGE			CARMEN, KAE LUM	4	E-10108	0700-0700	ICP
DOZ PVT E-10109 PEARSON			JIMMY LUST	2	E-10109	0700-0700	ICP
DOZ PVT E-10110 LEWIS			TYLER LEWIS	2	E-10110	0700-0700	ICP
DOZ PVT E-10111 HERMAN			LARRY HERMAN	3	E-10111	0700-0700	ICP
DOZ PVT E-10112 DAVIS			LELAND DAVIS	1	E-10112	0700-1900	ICP
W/T PVT E-10005 JOHNSON			JOSEPH GURROLA	1	E-10005	0700-1900	ICP
W/T PVT E-10131 PALMER			STANLEY MIRANDA	1	E-10131	0700-1900	ICP
MAST PVT E-10156 STONE FLY			MICHAEL PURENI	1	E-10156	0700-1900	ICP
MAST PVT E-10157 US FIRE			WILLIAM REDCORN	2	E-10157	0700-0700	ICP
MAST PVT E-10158 OROVILLE			DANIEL KELLY	1	E-10158	0700-1900	ICP
MAST PVT E-10159 OROVILLE			DANIEL KELLY	1	E-10159	0700-1900	ICP
MAST PVT E-10357 RJW			WADE FIELDS	1	E-10357	0700-1900	ICP

6. Work Assignments:
 Construct contingency line from 31N50 to Hyampom Rd
 Construct safety islands
 Fall hazard trees that threaten control lines.
 Insert progressive hose lay.

7. Special Instructions:

8. Communications							
Name	Ch	Function	Rx Freq	Rx Tone	Tx Freq	Tx Tone	Notes
CDF C2	1	COMMAND	151.2650	103.5 (T8)	159.3300	151.4 (T14)	
CDF T27	7	TACTICAL	159.3075N	192.8 (T16)	159.3075N	192.8 (T16)	
CDF T25	14	AIR TO GROUND	159.2775	192.8 (T16)	159.2775	192.8 (T16)	A/G TACTICAL
CALCORD	15	MEDICAL	156.0750N	156.7 (T6)	156.0750N	156.7 (T6)	MEDICAL COORDINATION
GUARD 26	16	AIRGUARD	168.6250N		168.6250N	110.9 (T1)	EMERGENCY USE ONLY

9. Prepared by: Name: K O'Neil RESL Signature:

ICS 204 Date/Time: 8/26/2021 2200 Personnel Count: 31

NIMS IAP

CONTROLLED UNCLASSIFIED INFORMATION//BASIC

ASSIGNMENT LIST (ICS 204 WF)

CONTROLLED UNCLASSIFIED
INFORMATION//BASIC

1. Incident Name: <p style="text-align: center;">Monument Fire South Zone</p>	2. Operational Period: Date From: 08/27/21 Date To: 08/28/21 Time From: 0700 Time To: 0700	3. Branch Division Contingency South Cont 1
4. Operations Personnel:		Page 2 of 2

Operations Section Chief: Andy Turner	Night Ops: Steven Ward
Branch Director: Bryan Farrell 12hr	Branch Safety:
Division/Group Supervisor: Levi Randolph (T) 12hr	Air Attack:

5. Resources Assigned:	** Resources Below in Bold are 12 Hour **							
Resource Identifier	ALS	LWD	Leader	Personnel	Request #	Hours	Reporting Location	
EXC PVT E-10446 TWO BRO'S			STEVE CLARK	1	E-10446	0700-1900	ICP	
GRD						0700-0700	ICP	
HEQB POBURKO			JASON POBURKO	1		0700-1900	ICP	
FALM PVT O-10138 KLEE TREE			JASON KLEE	2	O-10138	0700-1900	ICP	
HEQB CLEMENTINO*			BRIAN CLEMENTINO	1	O-10400	0700-0700	ICP	
W/T PVT E-10011 HARRIS*			JOHN ZAUBIRER	1	E-10011	0700-1900	ICP	
W/T PVT E-10121 BLACKCAT*			SCOTT CALWSON	1	E-10121	0700-1900	ICP	
W/T PVT E-10126 BURTON*			LARRY BURTON	1	E-10126	1900-0700	ICP	
W/T PVT E-10202 TULE RIVER*			KEVIN FRANCO	1	E-10202	0700-1900	ICP	
W/T PVT E-10278 3J*			MICHAEL BLUNT	1	E-10278	0700-1900	ICP	
W/T PVT E-10283 SIERRA*			RICK ANDERSON	1	E-10283	1900-0700	ICP	
W/T PVT E-10291 ZABEL*			FRANK ZABEL	1	E-10291	0700-1900	ICP	
W/T PVT E-10293 CVR*			PAUL CLEAVER	1	E-10293	0700-1900	ICP	
W/T PVT E-10428 CUT ABOVE*			MITCH MEIER	1	E-10428	0700-1900	ICP	

6. Work Assignments:
 Construct contingency line from 31N50 to Hyampom Rd
 Construct safety islands
 Fall hazard trees that threaten control lines.
 Insert progressive hose lay.

7. Special Instructions:
 *Report to the MRB

8. Communications

Name	Ch	Function	Rx Freq	Rx Tone	Tx Freq	Tx Tone	Notes
CDF C2	1	COMMAND	151.2650	103.5 (T8)	159.3300	151.4 (T14)	
CDF T27	7	TACTICAL	159.3075N	192.8 (T16)	159.3075N	192.8 (T16)	
CDF T25	14	AIR TO GROUND	159.2775	192.8 (T16)	159.2775	192.8 (T16)	A/G TACTICAL
CALCORD	15	MEDICAL	156.0750N	156.7 (T6)	156.0750N	156.7 (T6)	MEDICAL COORDINATION
GUARD 26	16	AIRGUARD	168.6250N		168.6250N	110.9 (T1)	EMERGENCY USE ONLY

9. Prepared by: Name: K O'Neil RESL Signature:

ICS 204 Date/Time: 8/26/2021 2200 Personnel Count: 14

ASSIGNMENT LIST (ICS 204 WF)

CONTROLLED UNCLASSIFIED
INFORMATION//BASIC

1. Incident Name: Monument Fire South Zone	2. Operational Period: Date From: 08/27/21 Date To: 08/28/21 Time From: 0700 Time To: 0700	3. Branch Division Contingency South Cont 2
4. Operations Personnel:		Page 1 of 2

Operations Section Chief: Andy Turner	Night Ops: Steven Ward
Branch Director: Bryan Farrell 12hr	Branch Safety:
Division/Group Supervisor: Mike Watner 12hr	Air Attack:

5. Resources Assigned:		** Resources Below in Bold are 12 Hour **					
Resource Identifier	ALS	LWD	Leader	Personnel	Request #	Hours	Reporting Location
CRW						0700-0700	ICP
DOZ PVT E-10094 MARSH			DAN MARSH	4	E-10094	0700-0700	ICP
DOZ PVT E-10102 CHUCK FRY → to NN			CHUCK FRY	2	E-10102	0700-0700	ICP
DOZ PVT E-10103 MEEKER			JONATHAN MEEKER	2	E-10103	0700-0700	ICP
DOZ PVT E-10105 PHELAN			JAROD WELLS	1	E-10105	0700-1900	ICP
DOZ PVT E-10113 GOLTERMAN			CASEY GOLTERMANN	3	E-10113	0700-0700	ICP
DOZ PVT E-10174 COTTON			MIKE STAHEL	2	E-10174	0700-0700	ICP
DOZ PVT E-10260 STRIKE			MARCK CHAVEZ	2	E-10260	0700-1900	ICP
DOZ PVT E-10261 STRIKE			WES CURL	1	E-10261	0700-1900	ICP
DOZ PVT 73 SHASTA			ROB STRIEFF	1	E-10305	0700-1900	ICP
DOZ PVT E-10438 PACKWAY			RICHARD HATHAWAY	3	E-10438	0700-0700	ICP
DOZ PVT E-10440 SUNRISE			JOHN WILLIAMS	2	E-10440	0700-0700	ICP
W/T PVT E-10274 Warnky			MARK WARNKY	1	E-10274	0700-1900	ICP
W/T PVT E-10285 SAGE			KAELUN KARMEN	2	E-10285	0700-0700	ICP
W/T PVT E-10289 Act Fast			ANGELO CATTANEO	1	E-10289	0700-1900	ICP
MAST PVT E-10161 SISKIYOU			DENNIS LANGE	2	E-10161	0700-1900	ICP
MAST PVT E-10162 RUBINI			DOMINIC RUBINI	1	E-10162	0700-1900	ICP
MAST PVT E-10366 H2AO LLC			HAYDEN OILAR	1	E-10366	0700-1900	ICP

6. Work Assignments:
 Construct contingency line from 31N50 to Hyampom Rd
 Construct safety islands
 Fall hazard trees that threaten control lines.
 Insert progressive hose lay.

7. Special Instructions:

8. Communications							
Name	Ch	Function	Rx Freq	Rx Tone	Tx Freq	Tx Tone	Notes
CDF C2	1	COMMAND	151.2650	103.5 (T8)	159.3300	151.4 (T14)	
CDF T28	8	TACTICAL	151.1825	192.8 (T16)	151.1825	192.8 (T16)	
CDF T25	14	AIR TO GROUND	159.2775	192.8 (T16)	159.2775	192.8 (T16)	AVG TACTICAL
CALCORD	15	MEDICAL	156.0750N	156.7 (T6)	156.0750N	156.7 (T6)	MEDICAL COORDINATION
GUARD 26	16	AIRGUARD	168.6250N		168.6250N	110.9 (T1)	EMERGENCY USE ONLY

9. Prepared by: Name: K O'Neil	RESL	Signature:
ICS 204	Date/Time: 8/26/2021 2200	Personnel Count: 31

ASSIGNMENT LIST (ICS 204 WF)

CONTROLLED UNCLASSIFIED
INFORMATION//BASIC

1. Incident Name: <p style="text-align: center;">Monument Fire South Zone</p>	2. Operational Period: Date From: 08/27/21 Date To: 08/28/21 Time From: 0700 Time To: 0700	3. Branch Division Contingency South Cont 2
4. Operations Personnel:		Page 2 of 2

Operations Section Chief: Andy Turner	Night Ops: Steven Ward
Branch Director: Bryan Farrell 12hr	Branch Safety:
Division/Group Supervisor: Mike Watner 12hr	Air Attack:

5. Resources Assigned:	** Resources Below in Bold are 12 Hour **							
Resource Identifier	ALS	LWD	Leader	Personnel	Request #	Hours	Reporting Location	
MAST PVT E-10368 JOHNS			VIRGIL JOHNS	1	E-10368	0700-1900	ICP	
MAST PVT E-10454 BRAD → to Hayfork Staging			MARK ESCALERA	2	E-10454	0700-1900	ICP	
EXC PVT E10484 WALBERG			BRIAN BELOIT	1	E-10484	0700-1900	ICP	
CHIP PVT E-10485 BUNDY			JUSTIN GARRET	2	E-10485	0700-1900	ICP	
CHIP PVT E-10486 A CUT			JEFF BAKER	2	E-10486	0700-1900	ICP	
HEQB WASHBURN			JED WASHBURN	1	O-10164	0700-1900	ICP	
HEQB HUGHES				1		0700-1900	ICP	
FALM PVT GARTH FOSTER				1	O-10140	0700-1900	ICP	
W/T PVT E-10124								
W/T PVT E-10289								
DOZ PVT E-10101								
DOZ PVT E-10437								
DOZ PVT E-10440								
MAST PVT E-10437 ← from RR								
MAST PVT E-10455 ← from RR								

6. Work Assignments:
 Construct contingency line from 31N50 to Hyampom Rd
 Construct safety islands
 Fall hazard trees that threaten control lines.
 Insert progressive hose lay.

7. Special Instructions:

8. Communications							
Name	Ch	Function	Rx Freq	Rx Tone	Tx Freq	Tx Tone	Notes
CDF C2	1	COMMAND	151.2650	103.5 (T8)	159.3300	151.4 (T14)	
CDF T28	8	TACTICAL	151.1825	192.8 (T16)	151.1825	192.8 (T16)	
CDF T25	14	AIR TO GROUND	159.2775	192.8 (T16)	159.2775	192.8 (T16)	A/G TACTICAL
CALCORD	15	MEDICAL	156.0750N	156.7 (T6)	156.0750N	156.7 (T6)	MEDICAL COORDINATION
GUARD 26	16	AIRGUARD	168.6250N		168.6250N	110.9 (T1)	EMERGENCY USE ONLY

9. Prepared by: Name:	K O'Neil	RESL	Signature:
ICS 204	Date/Time: 8/26/2021	2200	Personnel Count: 11

ASSIGNMENT LIST (ICS 204 WF)

CONTROLLED UNCLASSIFIED
INFORMATION//BASIC

1. Incident Name: Monument Fire South Zone	2. Operational Period: Date From: 08/27/21 Date To: 08/28/21 Time From: 0700 Time To: 0700	3. Branch Staging <b style="text-align: center;">Hayfork
-----------------------------------------------------------------	---------------------------------------------------------------------------------------------------------------	---------------------------------------------------------------------------------

Page 1 of 1

4. Operations Personnel:	
Operations Section Chief: Andy Turner	Night Ops: Steven Ward
Branch Director:	Branch Safety:
Division/Group Supervisor: Brandyn Labrue	Air Attack:

5. Resources Assigned:	** Resources Below in Bold are 12 Hour **							
Resource Identifier	ALS	LWD	Leader	Personnel	Request #	Hours	Reporting Location	
W/T PVT E-10007 ROGERS			DAN BRADY	1	E-10007	0700-1900	TC FAIRGROUND	
<i>MAST PVT E-10954 ← from S. Conti</i>								

6. Work Assignments:
 Maintain 3-minute response time.
 Monitor command frequencies.

7. Special Instructions:
 W/T's will be used for MRB when operational.

8. Communications

Name	Ch	Function	Rx Freq	Rx Tone	Tx Freq	Tx Tone	Notes
CDF C2	1	COMMAND	151.2650	103.5 (T8)	159.3300	151.4 (T14)	
CALCORD	15	MEDICAL	156.0750N	156.7 (T6)	156.0750N	156.7 (T6)	MEDICAL COORDINATION
GUARD 26	16	AIRGUARD	168.6250N		168.6250N	110.9 (T1)	EMERGENCY USE ONLY

9. Prepared by: Name: K O'Neil RESL

Signature:

ICS 204 Date/Time: 8/26/2021 2200 Personnel Count: 1

Division/Group Assignment List (ICS 204 WF)
Controlled Unclassified Information//Basic

1. Incident Name:		3.				
MONUMENT NORTH		Branch:		Division/Group		
2. Operational Period: 24 HR		10		U		
Date/Time From: 08/27/2021 0700 FRI	Date/Time To: 08/28/2021 0700 SAT					
4. Operations Personnel						
BRANCH DIRECTOR	CLINTON NORTHWAY (8/30)	FIELD OPERATIONS		JON GLOVER (8/30)		
DIVISION/GROUP SUPERVISOR	JAMIE MAYOR (8/30) JACOB BAILEY (T) (8/30)	PLANNING OPERATIONS		KAREN SCHOLL (8/30) RANDY FOLAND (T) (8/30)		
5. Resources Assigned this Period						
Strike Team / Task Force / Resource Designator	LWD	Leader	Number Persons	Drop Off PT./Time	Pick Up PT./Time	
C-99 HC2 R & R CONTRACTING	09/05	ASUCENA AGUILERA	20	WEAVERVILLE/0700	WEAVERVILLE/1900	
C-5 HC2I FIRESTORM 15A	09/04	BEN PAVAN	20	WEAVERVILLE/0700	WEAVERVILLE/1900	
O-418.112 TFLD	08/29	ANDRES OROZCO	1	WEAVERVILLE/0700	WEAVERVILLE/1900	
O-585 TFLD (T)	09/02	CODEN COPPLE	1	WEAVERVILLE/0700	WEAVERVILLE/1900	
O-86 FMOD REDWOOD EMPIRE	09/06	JESSE GONZALES	1	WEAVERVILLE/0700	WEAVERVILLE/1900	
O-603 TFLD	09/02	BRENTWOOD REID	1	WEAVERVILLE/0700	WEAVERVILLE/1900	
E-44 ENG3 JUNCTION CITY 2531	08/29	JUSTIN KERWICK	3	WEAVERVILLE/0700	WEAVERVILLE/1900	
E-381 ENG3 JUNCTION CITY 2533	08/29	JAMES DASDON	3	WEAVERVILLE/0700	WEAVERVILLE/1900	
E-674 ENG3 BLACK RANGE ENTERPRISES	09/04	TIMOTHY PEARSON	3	WEAVERVILLE/0700	WEAVERVILLE/1900	
E-595 ENG6 BLAZE RUNNERS 06	09/05	JOHN VINCENT	3	WEAVERVILLE/0700	WEAVERVILLE/1900	
E-663 ENG6 SHF - #651	09/05	SAMANTHA VALDEZ	4	WEAVERVILLE/0700	WEAVERVILLE/1900	
E-80 WTT1 ROCK CREEK (24 HR)	09/02	GARY SABIN	2	WEAVERVILLE/0700	WEAVERVILLE/1900	
E-24 WTS2 FORTNER EXCAVATION	08/28	DANIEL JONES	1	WEAVERVILLE/0700	WEAVERVILLE/1900	
E-632 DOZ2 BUD GARMEN				WEAVERVILLE/0700	WEAVERVILLE/1900	
E-481 DOZ3 C M CONSTRUCTION	09/07	STEVEN EDSALL	2	WEAVERVILLE/0700	WEAVERVILLE/1900	
S-21 EQD PUMPZILLA 2 TRINITY DAY (DS)	09/08	SERGIO BETANCOURT	2	WEAVERVILLE/0700	WEAVERVILLE/1900	
8. Division/Group Communication Summary						
Function	Channel	RX Frequency N/W	RX Tone/NAC	TX Frequency N/W	TX Tone/NAC	Mode
COMMAND	1	173.8125 N	107.2	168.4750 N	107.2	M
TACTICAL	CH 7 / TAC 7	168.6000 N	107.2	168.6000 N	107.2	
AIR TO GROUND	13	171.0375 N		171.0375 N		
TACTICAL	CALCORD - CH 15	156.0750 N	156.7	156.0750 N	156.7	
AIR GUARD	16	168.6250 N		168.6250 N	110.9	
9. Prepared By (Resource Unit Leader)		Approved By (Planning Section Chief)		Date	Time	
LISA SAPERSTEIN, RESL(T)		PETER BUT - 19- ³ SC1		08/26/2021	2000	

Division/Group Assignment List (ICS 204 WF)
Controlled Unclassified Information//Basic

1. Incident Name:		3.	
MONUMENT NORTH		Branch:	Division/Group
2. Operational Period: 24 HR		10	U
Date/Time From: 08/27/2021 0700 FRI	Date/Time To: 08/28/2021 0700 SAT		

4. Operations Personnel			
BRANCH DIRECTOR	CLINTON NORTHWAY (8/30)	FIELD OPERATIONS	JON GLOVER (8/30)
DIVISION/GROUP SUPERVISOR	JAMIE MAYOR (8/30) JACOB BAILEY (T) (8/30)	PLANNING OPERATIONS	KAREN SCHOLL (8/30) RANDY FOLAND (T) (8/30)

5. Resources Assigned this Period					
Strike Team / Task Force / Resource Designator	LWD	Leader	Number Persons	Drop Off PT./Time	Pick Up PT./Time
O-413 HEQB	08/28	SHAWN DEASON	1	WEAVERVILLE/0700	WEAVERVILLE/1900
E-385 SKG2 LET-ER-BUCK	08/29	DARREN WARD	2	WEAVERVILLE/0700	WEAVERVILLE/1900
E-486 MAST	09/09		2	WEAVERVILLE/0700	WEAVERVILLE/1900
O-57 REAF	09/01	ERIK RADEMACHER	1	WEAVERVILLE/0700	WEAVERVILLE/1900
O-453 REAF	08/26	KATY BARTZOKIS	1	WEAVERVILLE/0700	WEAVERVILLE/1900
O-469 SOFR	09/04	DAN HARKER	1	WEAVERVILLE/0700	WEAVERVILLE/1900
E-646 EMTF	09/05	JARREN BENNETT	1	WEAVERVILLE/0700	WEAVERVILLE/1900
E-706 AMBU 3	09/06	SARAH ORR	2	WEAVERVILLE/0700	WEAVERVILLE/1900

6. Control Operations/Work Assignments:

TASK: Keep fire west of the North Fork of the Trinity River. Continue prep on Brock Gulch Road and contingency dozer line between East Fork Road and Canyon Creek Rd. Maintain a presence on Hwy 299 and Dutch Creek Road and support CAL FIRE Division DD with any needs.

PURPOSE: Minimize fire spread east of East Fork Rd. and Hobo Gulch Rd.

END STATE: Reduce threat of fire to structures and critical infrastructures.

7. Special Instructions:

8. Division/Group Communication Summary						
Function	Channel	RX Frequency N/W	RX Tone/NAC	TX Frequency N/W	TX Tone/NAC	Mode
COMMAND	1	173.8125 N	107.2	168.4750 N	107.2	M
TACTICAL	CH 7 / TAC 7	168.6000 N	107.2	168.6000 N	107.2	
AIR TO GROUND	13	171.0375 N		171.0375 N		
TACTICAL	CALCORD - CH 15	156.0750 N	156.7	156.0750 N	156.7	
AIR GUARD	16	168.6250 N		168.6250 N	110.9	

9. Prepared By (Resource Unit Leader)	Approved By (Planning Section Chief)	Date	Time
LISA SAPERSTEIN, RESL(T)	PETER BUT -20- ³ SC1	08/26/2021	2000

Division/Group Assignment List (ICS 204 WF)
Controlled Unclassified Information//Basic

1. Incident Name:		3.	
MONUMENT NORTH		Branch:	Division/Group
2. Operational Period: 24 HR		10	U
Date/Time From: 08/27/2021 0700 FRI	Date/Time To: 08/28/2021 0700 SAT		
4. Operations Personnel			
BRANCH DIRECTOR	CLINTON NORTHWAY (8/30)	FIELD OPERATIONS	JON GLOVER (8/30)
DIVISION/GROUP SUPERVISOR	JAMIE MAYOR (8/30) JACOB BAILEY (T) (8/30)	PLANNING OPERATIONS	KAREN SCHOLL (8/30) RANDY FOLAND (T) (8/30)

7. Special Instructions:

- Resources with (DS) after name work 24 hours, double shifts
- Store equipment at Drop Points. Secure all equipment to prevent theft.
- GPS all pump locations and turn in to Division.
- Backhaul all trash to appropriate disposal site.
- Document any area that may have hazmat or unknown chemicals.

Safety Cowie - All Branches

MEDICAL RESPONSE:

REMS 1 staged at Bar 717
Ambulance 4 (Day) at Willow Creek
Ambulance 3 at Big Bar

On this incident CALCORD is to be used as a local medical tactical channel if needed to communicate with non-incident resources. The command channel is the primary channel for all medical emergencies. CALCORD also may be used for A/G communications with non-incident aircraft. Resources assisting in South Zone division should continue to use regularly assigned tactical channels.

8. Division/Group Communication Summary

Function	Channel	RX Frequency N/W	RX Tone/NAC	TX Frequency N/W	TX Tone/NAC	Mode
COMMAND	1	173.8125 N	107.2	168.4750 N	107.2	M
TACTICAL	CH 7 / TAC 7	168.6000 N	107.2	168.6000 N	107.2	
AIR TO GROUND	13	171.0375 N		171.0375 N		
TACTICAL	CALCORD - CH 15	156.0750 N	156.7	156.0750 N	156.7	
AIR GUARD	16	168.6250 N		168.6250 N	110.9	

9. Prepared By (Resource Unit Leader)	Approved By (Planning Section Chief)	Date	Time
LISA SAPERSTEIN, RESL(T)	PETER BUT - 21 - 3SC1	08/26/2021	2000

Division/Group Assignment List (ICS 204 WF)
Controlled Unclassified Information//Basic

1. Incident Name:			3.			
MONUMENT NORTH			Branch:		Division/Group	
2. Operational Period: 24 HR			40		NORTH CONTINGENCY	
Date/Time From: 08/27/2021 0700 FRI	Date/Time To: 08/28/2021 0700 SAT					
4. Operations Personnel						
BRANCH DIRECTOR		JAKE LIVINGSTON (8/30) CHRIS WENNOGLE (T) (8/30)	FIELD OPERATIONS		JON GLOVER (8/30)	
DIVISION/GROUP SUPERVISOR		BEN ENGELHARDT (8/30) TRAVIS MCCABE (T) (8/30)	PLANNING OPERATIONS		KAREN SCHOLL (8/30) RANDY FOLAND (T) (8/30)	
5. Resources Assigned this Period						
Strike Team / Task Force / Resource Designator	LWD	Leader	Number Persons	Drop Off PT./Time	Pick Up PT./Time	
O-685 TFLD	09/04	CHEVEYO MUNK	1	WEAVERVILLE/0700	WEAVERVILLE/1900	
O-783 TFLD		KEITH ROHRS	1	BAR 717/0700	BAR 717/1900	
O-418.113 TFLD (T)	08/30	CHARLES BALDNER-HATHAWAY	1	BAR 717/0700	BAR 717/1900	
O-376 HEQB	08/26	RYAN WINCHESTER	1	WEAVERVILLE/0700	WEAVERVILLE/1900	
O-744 HEQB	09/06	HAN DOMINI	1	WEAVERVILLE/0700	WEAVERVILLE/1900	
C-105 HC2 J FRANCO REFORESTATION	09/05	ESEQUIEL TAPIA	20	BAR 717/0700	BAR 717/1900	
O-83 FMOD TIMBERWOLF	09/04	ROCKY SULLIVAN	1	WEAVERVILLE/0700	WEAVERVILLE/1900	
E-618 ENG3 8333	09/06	VICTOR PRECIADO	5	BAR 717/0700	BAR 717/1900	
E-648 ENG6 GCT E5	09/05	JASON CAMPBELL	3	BAR 717/0700	BAR 717/1900	
E-661 ENG6 CLEARWATER FIRE 62	09/06	BRIAN TERRY	3	WEAVERVILLE/0700	WEAVERVILLE/1900	
E-769 WTT2 TACTICAL 31 CA-TNF	09/09	DANNY RASMUSSEN	2	BAR 717/0700	BAR 717/1900	
E-170 DOZ1 R. BROWN CONST	09/01	GARY HARRIS	2	WEAVERVILLE/0700	WEAVERVILLE/1900	
E-13 DOZ2 BEN'S TRUCK & EQUIPMENT	09/06	BILL SCARBROUGH	2	WEAVERVILLE/0700	WEAVERVILLE/1900	
E-14 DOZ2 NORTHSTATE	08/29	WADE FLORY	2	WEAVERVILLE/0700	WEAVERVILLE/1900	
E-25 DOZ2 BUD GARMAN CONSTRUCTION	08/31	BEDA GARMAN	2	WEAVERVILLE/0700	WEAVERVILLE/1900	
E-171 DOZ2 R. BROWN CONST	09/01	JAROD FULLERTON	2	WEAVERVILLE/0700	WEAVERVILLE/1900	
E-482 DOZ3 BRATCHER SERVICES	09/07	RON DARBY	2	WEAVERVILLE/0700	WEAVERVILLE/1900	
E-477 DOZ3 LET-ER-BUCK TRUCKING	09/06	DON ANDREWS	2	WEAVERVILLE/0700	WEAVERVILLE/1900	
8. Division/Group Communication Summary						
Function	Channel	RX Frequency N/W	RX Tone/NAC	TX Frequency N/W	TX Tone/NAC	Mode
COMMAND	2	171.5375 N	107.2	164.8625 N	107.2	
TACTICAL	CH 11/ TAC 11	168.2375 N	107.2	168.2375 N	107.2	
AIR TO GROUND	13	171.0375 N		171.0375 N		
TACTICAL	CALCORD - CH 15	156.0750 N	156.7	156.0750 N	156.7	
AIR GUARD	16	168.6250 N		168.6250 N	110.9	
9. Prepared By (Resource Unit Leader)		Approved By (Planning Section Chief)		Date	Time	
JULIE VORACHEK, RESL (T)		PETER BUT -22-3SC1		08/26/2021	2000	

Division/Group Assignment List (ICS 204 WF)
Controlled Unclassified Information//Basic

1. Incident Name:		3.				
MONUMENT NORTH		Branch:	Division/Group			
2. Operational Period: 24 HR		40	NORTH CONTINGENCY			
Date/Time From: 08/27/2021 0700 FRI	Date/Time To: 08/28/2021 0700 SAT					
4. Operations Personnel						
BRANCH DIRECTOR	JAKE LIVINGSTON (8/30) CHRIS WENNOGLE (T) (8/30)	FIELD OPERATIONS	JON GLOVER (8/30)			
DIVISION/GROUP SUPERVISOR	BEN ENGELHARDT (8/30) TRAVIS MCCABE (T) (8/30)	PLANNING OPERATIONS	KAREN SCHOLL (8/30) RANDY FOLAND (T) (8/30)			
5. Resources Assigned this Period						
Strike Team / Task Force / Resource Designator	LWD	Leader	Number Persons	Drop Off PT./Time	Pick Up PT./Time	
E-31 MAST KIT CONTRACTING	08/31	IKE TOMLINSON	2	WEAVERVILLE/0700	WEAVERVILLE/1900	
E-32 MAST EVANS RIGHT OF 32	08/31	TEO GONZALES	1	WEAVERVILLE/0700	WEAVERVILLE/1900	
E-33 MAST EVANS RIGHT OF	09/01	ROBERT TAYLOR	1	WEAVERVILLE/0700	WEAVERVILLE/1900	
E-34 MAST EVANS RIGHT OF	08/24	MIKE EVANS	4	WEAVERVILLE/0700	WEAVERVILLE/1900	
E-428 MAST CUTTING EDGE	09/04	SERGIO RENTERIA	2	WEAVERVILLE/0700	WEAVERVILLE/1900	
E-429 MAST HACKER MACHINES	09/04	CHAD METE	2	WEAVERVILLE/0700	WEAVERVILLE/1900	
E-217 GRD LET-ER-BUCK	09/01	DON ANDREWS	2	WEAVERVILLE/0700	WEAVERVILLE/1900	
E-752 GRD T2 - SUGAR PINE	09/07	BRAD ELLIOT	2	WEAVERVILLE/0700	WEAVERVILLE/1900	
O-608 FOBS	09/04	TRAVIS SAGEBIEL	1	WEAVERVILLE/0700	WEAVERVILLE/1900	
O-712 FOBS	09/07	JEREMY E SONES (T)	1	WEAVERVILLE/0700	WEAVERVILLE/1900	
O-346 REAF	08/29	JOSHUA LEE RIVERA	1	WEAVERVILLE/0700	WEAVERVILLE/1900	
O-704 REAF	09/05	CHRISTOPHER SHAW	1	WEAVERVILLE/0700	WEAVERVILLE/1900	
O-679 AEMT	09/07	KADY LUKOWICZ	1	BAR 717/0700	BAR 717/1900	
O-92 RES REMS 1	08/29	STEVEN HERREA	4	WEAVERVILLE/0700	WEAVERVILLE/1900	
6. Control Operations/Work Assignments:						
8. Division/Group Communication Summary						
Function	Channel	RX Frequency N/W	RX Tone/NAC	TX Frequency N/W	TX Tone/NAC	Mode
COMMAND	2	171.5375 N	107.2	164.8625 N	107.2	
TACTICAL	CH 11/ TAC 11	168.2375 N	107.2	168.2375 N	107.2	
AIR TO GROUND	13	171.0375 N		171.0375 N		
TACTICAL	CALCORD - CH 15	156.0750 N	156.7	156.0750 N	156.7	
AIR GUARD	16	168.6250 N		168.6250 N	110.9	
9. Prepared By (Resource Unit Leader)		Approved By (Planning Section Chief)		Date	Time	
JULIE VORACHEK, RESL (T)		PETER BUTTERFIELD, PSC1		08/26/2021	2000	

Division/Group Assignment List (ICS 204 WF)
Controlled Unclassified Information//Basic

1. Incident Name:		3.				
MONUMENT NORTH		Branch:		Division/Group		
2. Operational Period: 24 HR		40		NORTH CONTINGENCY		
Date/Time From: 08/27/2021 0700 FRI	Date/Time To: 08/28/2021 0700 SAT					
4. Operations Personnel						
BRANCH DIRECTOR	JAKE LIVINGSTON (8/30) CHRIS WENNOGLE (T) (8/30)	FIELD OPERATIONS		JON GLOVER (8/30)		
DIVISION/GROUP SUPERVISOR	BEN ENGELHARDT (8/30) TRAVIS MCCABE (T) (8/30)	PLANNING OPERATIONS		KAREN SCHOLL (8/30) RANDY FOLAND (T) (8/30)		
6. Control Operations/Work Assignments:						
TASK: Utilize equipment and ground resources to implement and identify contingency lines. Coordinate with adjoining divisions and zones. Implement structure protection along Hyampom road corridor.						
PURPOSE: Prevent loss of structures and values at risk.						
END STATE: Keep fire from impacting residences and values at risk along the Hyampom Rd and the communities of Hyampom and Hayfork.						
7. Special Instructions:						
Identify additional DP's. Minimize impacts to Hyampom Rd.						
Safety Keogh and Safety Kudo - Branch 40						
MEDICAL RESPONSE:						
Ambulance 3 (Day) at Big Bar						
Ambulance 4 (Day) at Willow Creek						
On this incident CALCORD is to be used as a local medical tactical channel if needed to communicate with non-incident resources. The command channel is the primary channel for all medical emergencies. CALCORD also may be used for A/G communications with non-incident aircraft. Resources assisting in South Zone division should continue to use regularly assigned tactical channels.						
8. Division/Group Communication Summary						
Function	Channel	RX Frequency N/W	RX Tone/NAC	TX Frequency N/W	TX Tone/NAC	Mode
COMMAND	2	171.5375 N	107.2	164.8625 N	107.2	
TACTICAL	CH 11/ TAC 11	168.2375 N	107.2	168.2375 N	107.2	
AIR TO GROUND	13	171.0375 N		171.0375 N		
TACTICAL	CALCORD - CH 15	156.0750 N	156.7	156.0750 N	156.7	
AIR GUARD	16	168.6250 N		168.6250 N	110.9	
9. Prepared By (Resource Unit Leader)		Approved By (Planning Section Chief)		Date	Time	
JULIE VORACHEK, RESL (T)		PETER BUT -24- ³ SC1		08/26/2021	2000	

Division/Group Assignment List (ICS 204 WF)
Controlled Unclassified Information//Basic

1. Incident Name:		3.				
MONUMENT NORTH		Branch:	Division/Group			
2. Operational Period: 24 HR		40	W			
Date/Time From: 08/27/2021 0700 FRI	Date/Time To: 08/28/2021 0700 SAT					
4. Operations Personnel						
BRANCH DIRECTOR	JAKE LIVINGSTON (8/30) CHRIS WENNOGLE (T) (8/30)	FIELD OPERATIONS	JON GLOVER (8/30)			
DIVISION/GROUP SUPERVISOR	LOGAN BALLESTEROS (T) (9/7)	PLANNING OPERATIONS	KAREN SCHOLL (8/30) RANDY FOLAND (T) (8/30)			
5. Resources Assigned this Period						
Strike Team / Task Force / Resource Designator	LWD	Leader	Number Persons	Drop Off PT./Time	Pick Up PT./Time	
O-653 TFLD	09/04	TODD HYATT	1	WEAVERVILLE/0700	WEAVERVILLE/1900	
C-116 HC2 FRANCO REFORESTATION	09/08	ALBERTO FRANCO-QUEVEDO	20	BAR 717/0700	BAR 717/1900	
O-785 FMOD CHARLIE FALLERS	09/09	TACOMA MANUEL	2	WEAVERVILLE/0700	WEAVERVILLE/1900	
E-662 ENG6 PEANUT PIE	09/06	WADE VISSER	3	WEAVERVILLE/0700	WEAVERVILLE/1900	
E-664 ENG6 TIMBER RIDGE FIRE LLC	09/08	JEFF TODD	3	WEAVERVILLE/0700	WEAVERVILLE/1900	
E-666 ENG6 ALTERGOTT FORESTRY LLC	09/06	MARCIE MORRE	3	WEAVERVILLE/0700	WEAVERVILLE/1900	
E-669 ENG6 LOOMIS FIRE CONTROL	09/08	JAMES DEGEN	3	WEAVERVILLE/0700	WEAVERVILLE/1900	
E-10370 ENG3 MNF 352	09/08	MATHEW ADAMS	5	WEAVERVILLE/0700	WEAVERVILLE/1900	
E-478 DOZ3 ALVORD	09/07	MATT DAVIS	2	WEAVERVILLE/0700	WEAVERVILLE/1900	
E-480 DOZ3 DIRT WORKS UNLIMITED	09/07	TIM PAULEY	1	WEAVERVILLE/0700	WEAVERVILLE/1900	
E-482 DOZ3 BRATCHER	09/07	RON DARBY	2	WEAVERVILLE/0700	WEAVERVILLE/1900	
6. Control Operations/Work Assignments:						
TASK: Coordinate with Branch 30 and Division RR as South Zone brings their control line west towards Division W. Identify control lines and contingency lines to connect suppression actions with Division RR, Division Z and North Contingency.						
PURPOSE: Minimize fire spread to the South and West while reducing impact to the infrastructure and values at risk.						
END STATE: Keep fire spread to the North of Hayfork Creek and East of Pattison Peak Ridge.						
7. Special Instructions:						
8. Division/Group Communication Summary						
Function	Channel	RX Frequency N/W	RX Tone/NAC	TX Frequency N/W	TX Tone/NAC	Mode
COMMAND	2	171.5375 N	107.2	164.8625 N	107.2	
TACTICAL	CH 8/ TAC 8	166.7250 N	107.2	166.7250 N	107.2	
TACTICAL	CALCORD - CH 15	156.0750 N	156.7	156.0750 N	156.7	
AIR GUARD	16	168.6250 N		168.6250 N	110.9	
9. Prepared By (Resource Unit Leader)		Approved By (Planning Section Chief)		Date	Time	
JULIE VORACHEK, RESL (T)		PETER BUT -25- SC1		08/26/2021	2000	

Division/Group Assignment List (ICS 204 WF)
Controlled Unclassified Information//Basic

1. Incident Name:		3.	
MONUMENT NORTH		Branch:	Division/Group
2. Operational Period: 24 HR		40	W
Date/Time From: 08/27/2021 0700 FRI	Date/Time To: 08/28/2021 0700 SAT		
4. Operations Personnel			
BRANCH DIRECTOR	JAKE LIVINGSTON (8/30) CHRIS WENNOGLE (T) (8/30)	FIELD OPERATIONS	JON GLOVER (8/30)
DIVISION/GROUP SUPERVISOR	LOGAN BALLESTEROS (T) (9/7)	PLANNING OPERATIONS	KAREN SCHOLL (8/30) RANDY FOLAND (T) (8/30)

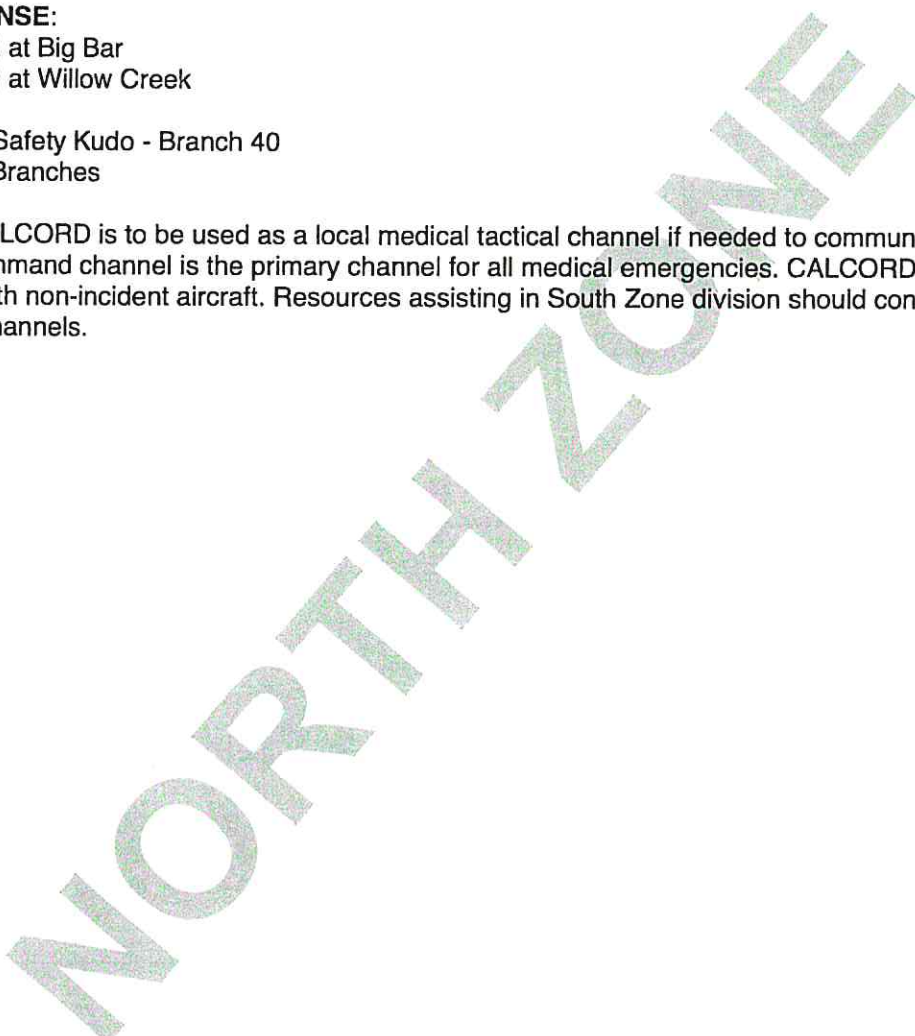
7. Special Instructions:

MEDICAL RESPONSE:

Ambulance 3 (Day) at Big Bar
Ambulance 4 (Day) at Willow Creek

Safety Keogh and Safety Kudo - Branch 40
Safety Cowie - All Branches

On this incident CALCORD is to be used as a local medical tactical channel if needed to communicate with non-incident resources. The command channel is the primary channel for all medical emergencies. CALCORD also may be used for A/G communications with non-incident aircraft. Resources assisting in South Zone division should continue to use regularly assigned tactical channels.



8. Division/Group Communication Summary						
Function	Channel	RX Frequency N/W	RX Tone/NAC	TX Frequency N/W	TX Tone/NAC	Mode
COMMAND	2	171.5375 N	107.2	164.8625 N	107.2	
TACTICAL	CH 8/ TAC 8	166.7250 N	107.2	166.7250 N	107.2	
TACTICAL	CALCORD - CH 15	156.0750 N	156.7	156.0750 N	156.7	
AIR GUARD	16	168.6250 N		168.6250 N	110.9	

9. Prepared By (Resource Unit Leader)	Approved By (Planning Section Chief)	Date	Time
JULIE VORACHEK, RESL (T)	PETER BUT ^{SC1}	08/26/2021	2000

Division/Group Assignment List (ICS 204 WF)
Controlled Unclassified Information//Basic

1. Incident Name: MONUMENT NORTH		3.	
2. Operational Period: 24 HR		Branch: 40	Division/Group Z
Date/Time From: 08/27/2021 0700 FRI	Date/Time To: 08/28/2021 0700 SAT		

4. Operations Personnel			
BRANCH DIRECTOR	JAKE LIVINGSTON (8/30) CHRIS WENNOGLE (T) (8/30)	FIELD OPERATIONS	JON GLOVER (8/30)
DIVISION/GROUP SUPERVISOR	KRIS DUDLEY (8/30) JUSTEN JOHANSEN (T) (8/30)	PLANNING OPERATIONS	KAREN SCHOLL (8/30) RANDY FOLAND (T) (8/30)

5. Resources Assigned this Period					
Strike Team / Task Force / Resource Designator	LWD	Leader	Number Persons	Drop Off PT./Time	Pick Up PT./Time
O-407 TFLD	08/26	JOEL BRANDT	1	WEAVERVILLE/0700	WEAVERVILLE/1900
C-50 HC1 TEXAS CANYON	08/27	DANNY BREUKLANDER	20	WEAVERVILLE/0700	WEAVERVILLE/1900
C-113 HC1 TRINITY IHC	09/09	TRISTAN DIAS		WEAVERVILLE/0700	WEAVERVILLE/1900
C-96 HC2I ASI ARDEN SOLUTIONS	09/04	JEFF HARRISON	20	WEAVERVILLE/0700	WEAVERVILLE/1900
E-407 ENG3 LPF 343	08/27	NICHOLIS RILEY	5	WEAVERVILLE/0700	WEAVERVILLE/1900
E-408 ENG3 LPF 335	08/27	JUSTIN MAHAFFEY	5	WEAVERVILLE/0700	WEAVERVILLE/1900
E-415 ENG3 AZ-KNF 32	08/27	JACCIE MAJORS	6	WEAVERVILLE/0700	WEAVERVILLE/1900
E-555 ENG6 KENTUCKY	08/26	TIM CROWELL	4	BAR 717/0700	BAR 717/1900
E-598 ENG6 ARIES FIRE SERVICE	08/31	DAN MARTIN	3	WEAVERVILLE/0700	WEAVERVILLE/1900
E-72 WTS1 NORTHSTATE 72	09/01	STEVE SANDERS	1	WEAVERVILLE/0700	WEAVERVILLE/1900
E-21 WTS2 CATTLE LACK RANCH (DS)	09/03	EUGENE GRAHAM	2	WEAVERVILLE/0700	WEAVERVILLE/1900
E-23 WTS2 FORTNER EXCAVATION	08/30	BOB FORTNER	1	WEAVERVILLE/0700	WEAVERVILLE/1900
E-436 DOZ2 SPRATT	08/26	ERIC SPRATT	2	WEAVERVILLE/0700	WEAVERVILLE/1900
E-168 DOZ3 BRAD INGRAM CONST	08/27	MIKE UNDERHILL	2	WEAVERVILLE/0700	WEAVERVILLE/1900
E-475 DOZ3 LONESTAR ENTERPRISES, INC.	09/02	COREY SUPACK	2	WEAVERVILLE/0700	WEAVERVILLE/1900
E-50 SKG1 SOFT TRACK ATTACK 50 (DS)	08/31	JEREMY NELSON	1	WEAVERVILLE/0700	WEAVERVILLE/1900

8. Division/Group Communication Summary						
Function	Channel	RX Frequency N/W	RX Tone/NAC	TX Frequency N/W	TX Tone/NAC	Mode
COMMAND	2	171.5375 N	107.2	164.8625 N	107.2	
TACTICAL	CH 10/ TAC 10	168.2500 N	107.2	168.2500 N	107.2	
AIR TO GROUND	13	171.0375 N		171.0375 N		
TACTICAL	CALCORD - CH 15	156.0750 N	156.7	156.0750 N	156.7	
AIR GUARD	16	168.6250 N		168.6250 N	110.9	

9. Prepared By (Resource Unit Leader) JULIE VORACHEK, RESL (T)	Approved By (Planning Section Chief) PETER BUTTERFIELD PSC1	Date 08/26/2021	Time 2000
--------------------------------------------------------------------------	-----------------------------------------------------------------------	---------------------------	---------------------

Division/Group Assignment List (ICS 204 WF)

Controlled Unclassified Information//Basic

1. Incident Name:		3.				
MONUMENT NORTH		Branch:	Division/Group			
2. Operational Period: 24 HR		40	Z			
Date/Time From: 08/27/2021 0700	FRI	Date/Time To: 08/28/2021 0700	SAT			
4. Operations Personnel						
BRANCH DIRECTOR	JAKE LIVINGSTON (8/30) CHRIS WENNOGLE (T) (8/30)	FIELD OPERATIONS	JON GLOVER (8/30)			
DIVISION/GROUP SUPERVISOR	KRIS DUDLEY (8/30) JUSTEN JOHANSEN (T) (8/30)	PLANNING OPERATIONS	KAREN SCHOLL (8/30) RANDY FOLAND (T) (8/30)			
5. Resources Assigned this Period						
Strike Team / Task Force / Resource Designator	LWD	Leader	Number Persons	Drop Off PT./Time	Pick Up PT./Time	
E-684 LDFR 7045		DAVE BROWN	1	WEAVERVILLE/0700	WEAVERVILLE/1900	
O-418.64 SOFR	08/31	RYAN KEOGH	1	WEAVERVILLE/0700	WEAVERVILLE/1900	
O-729 SOFR	09/04	KAY KUDO	1	WEAVERVILLE/0700	WEAVERVILLE/1900	
O-517 MED TEAM 1	09/05	MACARTHUR / JOHNSON	2	WEAVERVILLE/0700	WEAVERVILLE/1900	
6. Control Operations/Work Assignments:						
TASK: Hold existing containment lines from the A/Z break to DP 30. Construct indirect line from DP 30 west along Pattison Ridge. Coordinate with Contingency Group.						
PURPOSE: Minimize fire spread to the South and West while reducing impact to the infrastructure and other values at risk.						
END STATE: Keep fire spread South and East of Pattison Ridge.						
7. Special Instructions:						
<ul style="list-style-type: none"> Resources with (DS) after name work 24 hours, double shifts Contact Kent Collard Bar 717 for information concerning previous dozer lines north of his property. Store equipment at Drop Points. Secure all equipment to prevent theft. GPS all pump locations and turn into Division. Backhaul all trash to appropriate disposal site. Document any area that may have hazmat of unknown chemicals. 						
Safety Keogh and Safety Kudo - Branch 40 Safety Cowie - All Branches						
MEDICAL RESPONSE:						
8. Division/Group Communication Summary						
Function	Channel	RX Frequency N/W	RX Tone/NAC	TX Frequency N/W	TX Tone/NAC	Mode
COMMAND	2	171.5375 N	107.2	164.8625 N	107.2	
TACTICAL	CH 10/ TAC 10	168.2500 N	107.2	168.2500 N	107.2	
AIR TO GROUND	13	171.0375 N		171.0375 N		
TACTICAL	CALCORD - CH 15	156.0750 N	156.7	156.0750 N	156.7	
AIR GUARD	16	168.6250 N		168.6250 N	110.9	
9. Prepared By (Resource Unit Leader)		Approved By (Planning Section Chief)		Date	Time	
JULIE VORACHEK, RESL (T)		PETER BUT ² SC1		08/26/2021	2000	

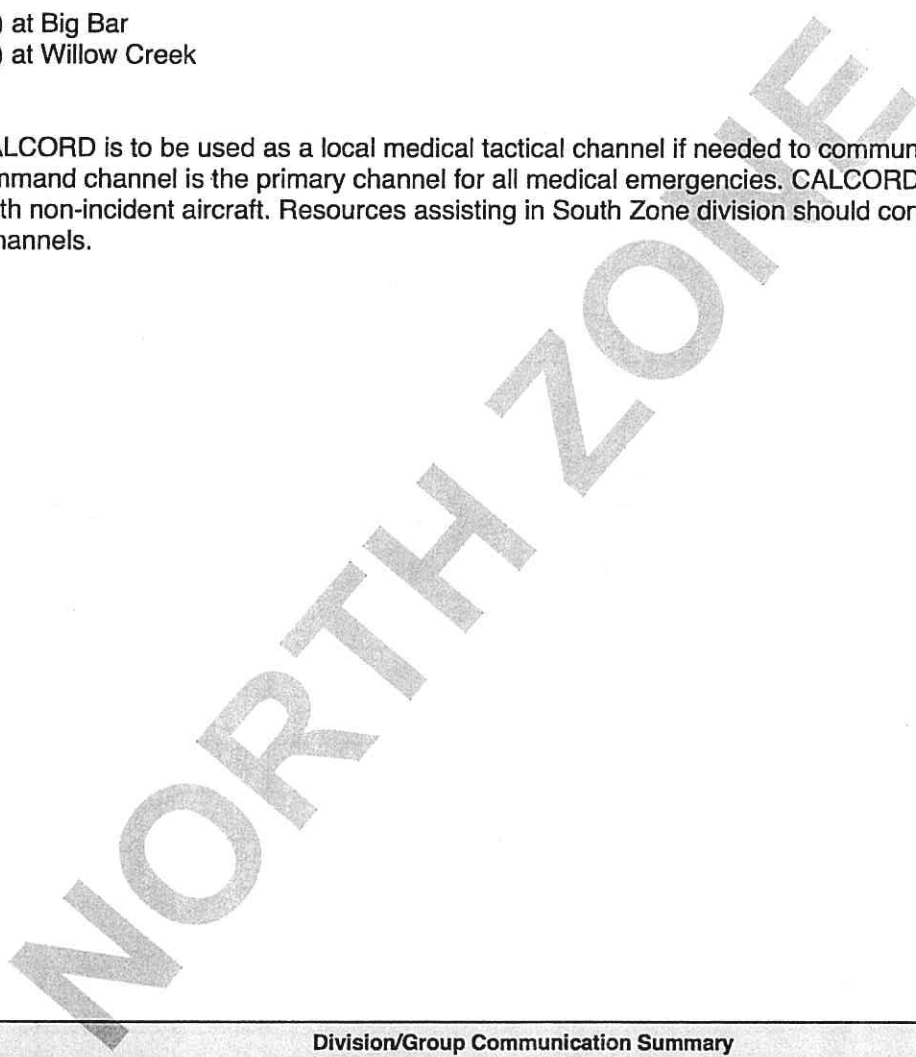
Division/Group Assignment List (ICS 204 WF)
Controlled Unclassified Information//Basic

1. Incident Name:		3.	
MONUMENT NORTH		Branch:	Division/Group
2. Operational Period: 24 HR		40	Z
Date/Time From: 08/27/2021 0700 FRI	Date/Time To: 08/28/2021 0700 SAT		
4. Operations Personnel			
BRANCH DIRECTOR	JAKE LIVINGSTON (8/30) CHRIS WENNOGLE (T) (8/30)	FIELD OPERATIONS	JON GLOVER (8/30)
DIVISION/GROUP SUPERVISOR	KRIS DUDLEY (8/30) JUSTEN JOHANSEN (T) (8/30)	PLANNING OPERATIONS	KAREN SCHOLL (8/30) RANDY FOLAND (T) (8/30)

7. Special Instructions:

Ambulance 3 (Day) at Big Bar
Ambulance 4 (Day) at Willow Creek

On this incident CALCORD is to be used as a local medical tactical channel if needed to communicate with non-incident resources. The command channel is the primary channel for all medical emergencies. CALCORD also may be used for A/G communications with non-incident aircraft. Resources assisting in South Zone division should continue to use regularly assigned tactical channels.



8. Division/Group Communication Summary						
Function	Channel	RX Frequency N/W	RX Tone/NAC	TX Frequency N/W	TX Tone/NAC	Mode
COMMAND	2	171.5375 N	107.2	164.8625 N	107.2	
TACTICAL	CH 10/ TAC 10	168.2500 N	107.2	168.2500 N	107.2	
AIR TO GROUND	13	171.0375 N		171.0375 N		
TACTICAL	CALCORD - CH 15	156.0750 N	156.7	156.0750 N	156.7	
AIR GUARD	16	168.6250 N		168.6250 N	110.9	

9. Prepared By (Resource Unit Leader)		Approved By (Planning Section Chief)		Date	Time
JULIE VORACHEK, RESL (T)		PETER BUT - 29 - PSC1		08/26/2021	2000

Division/Group Assignment List (ICS 204 WF)
Controlled Unclassified Information//Basic

1. Incident Name:			3.			
MONUMENT NORTH			Branch:		Division/Group	
2. Operational Period: 24 HR			NIGHT		W / Z	
Date/Time From: 08/27/2021 0700 FRI	Date/Time To: 08/28/2021 0700 SAT					
4. Operations Personnel						
BRANCH DIRECTOR		JAKE LIVINGSTON (8/30) CHRIS WENNOGLE (T) (8/30)		FIELD OPERATIONS		
DIVISION/GROUP SUPERVISOR		HUGH FAIRFIELD-SMITH (8/30) JULIE PODANY (T) (9/6)		PLANNING OPERATIONS		
				JON GLOVER (8/30)		
				KAREN SCHOLL (8/30) RANDY FOLAND (T) (8/30)		
5. Resources Assigned this Period						
Strike Team / Task Force / Resource Designator	LWD	Leader	Number Persons	Drop Off PT./Time	Pick Up PT./Time	
O-721 TFLD	09/07	TIMOTHY E SNYDER	1	WEAVERVILLE/1900	WEAVERVILLE/0700	
E-414.1 TFLD (T)	08/28	EDDIE BENAVIDES	1	WEAVERVILLE/1900	WEAVERVILLE/0700	
E-673.1 TFLD (T)	09/03	ERIC JACKSON	1	WEAVERVILLE/1900	WEAVERVILLE/0700	
C-108 HC1 LOLO IHC	09/09	SHAWN FAIELLA	22	WEAVERVILLE/1900	WEAVERVILLE/0700	
C-71 HC2 FRANCO REFORESTATION 71	08/29	JOAN ALCANTAR	20	WEAVERVILLE/1900	WEAVERVILLE/0700	
E-414 ENG3 AZ-KNF 312	08/28	BOB MARKEY	5	WEAVERVILLE/1900	WEAVERVILLE/0700	
E-505 ENG3 GREY WOLF	08/30	JEFF CAMPBELL	4	WEAVERVILLE/1900	WEAVERVILLE/0700	
E-673 ENG3 SACRAMENTO DISTRICT	09/03	HUGO ERHEWAYN	4	WEAVERVILLE/1900	WEAVERVILLE/0700	
E-179 ENG5 WILDLANDS FIRE SERVICE	09/03	ALLEN HALMAN	3	WEAVERVILLE/1900	WEAVERVILLE/0700	
E-520 ENG6 UT-SWS - E663	08/28	HEBER HEYDER	3	WEAVERVILLE/1900	WEAVERVILLE/0700	
E-80 WTT1 ROCK CREEK (24 HR)	09/02	GREG VAWSER	2	WEAVERVILLE/1900	WEAVERVILLE/0700	
E-21 WTS2 CATTLE LACK RANCH (DS)	08/30	EUGENE GRAHAM	2	WEAVERVILLE/1900	WEAVERVILLE/0700	
E-22 WTS2 CATTLE LACK RANCH	09/04	RANDY HORN	1	WEAVERVILLE/1900	WEAVERVILLE/0700	
E-484 DOZ2 BROWN DOZER	09/07	BARRY BROWN	2	WEAVERVILLE/1900	WEAVERVILLE/0700	
E-629 DOZ2 ROWBERRY DOZER	09/06	CALEB ROWBERRY	2	WEAVERVILLE/1900	WEAVERVILLE/0700	
E-50 SKG1 SOFT TRACK ATTACK 50 (DS)	08/31	JEREMY NELSON	1	WEAVERVILLE/1900	WEAVERVILLE/0700	
E-770 SKG2 RIM ROCK EQUIPMENT	09/08	ROBERT TOBIASON	2	WEAVERVILLE/1900	WEAVERVILLE/0700	
S-21 EQD PUMPZILLA 2 TRINITY DAY (DS)	08/28	WALT MALGINNISS	2	WEAVERVILLE/1900	WEAVERVILLE/0700	
8. Division/Group Communication Summary						
Function	Channel	RX Frequency N/W	RX Tone/NAC	TX Frequency N/W	TX Tone/NAC	Mode
COMMAND	2	171.5375 N	107.2	164.8625 N	107.2	
TACTICAL	CH 10/ TAC 10	168.2500 N	107.2	168.2500 N	107.2	
TACTICAL	CALCORD - CH 15	156.0750 N	156.7	156.0750 N	156.7	
AIR GUARD	16	168.6250 N		168.6250 N	110.9	
9. Prepared By (Resource Unit Leader)		Approved By (Planning Section Chief)		Date	Time	
JULIE VORACHEK, RESL (T)		PETER BUT - 30-		08/26/2021	2000	

Division/Group Assignment List (ICS 204 WF)
Controlled Unclassified Information//Basic

1. Incident Name:		3.	
MONUMENT NORTH		Branch:	Division/Group
2. Operational Period: 24 HR		NIGHT	W / Z
Date/Time From: 08/27/2021 0700 FRI	Date/Time To: 08/28/2021 0700 SAT		

4. Operations Personnel			
BRANCH DIRECTOR	JAKE LIVINGSTON (8/30) CHRIS WENNOGLE (T) (8/30)	FIELD OPERATIONS	JON GLOVER (8/30)
DIVISION/GROUP SUPERVISOR	HUGH FAIRFIELD-SMITH (8/30) JULIE PODANY (T) (9/6)	PLANNING OPERATIONS	KAREN SCHOLL (8/30) RANDY FOLAND (T) (8/30)

5. Resources Assigned this Period					
Strike Team / Task Force / Resource Designator	LWD	Leader	Number Persons	Drop Off PT./Time	Pick Up PT./Time
O-418.111 SOF2	08/30	TOM NASH	1	WEAVERVILLE/1900	WEAVERVILLE/0700
O-93 RES REMS 2	08/31	BENNETT/DOUGHTERY/WE NTZELL/DECKER	4	WEAVERVILLE/1900	WEAVERVILLE/0700
O-768 EMPF MEDIC 3	09/08	SHAWN CLARK	1	WEAVERVILLE/1900	WEAVERVILLE/0700
O-677 EMTF EMT 4	09/04	WEDGE WARFORD	1	WEAVERVILLE/1900	WEAVERVILLE/0700

6. Control Operations/Work Assignments:

TASK: Hold existing containment lines from DP50 east and south to Haypress. Continue to patrol and mop up as needed in Division W/Z. Provide support to South Zone Divisions DD and RR. Hold fire south of Pattison Ridge.

PURPOSE: Minimize fire spread to the south and west while reducing impact to the infrastructure and other values at risk.

END STATE: Keep fire spread south and east of Pattison Ridge.

7. Special Instructions:

Resources with (DS) after name work 24 hours, double shifts

Safety Nash - Night Safety

On this incident CALCORD is to be used as a local medical tactical channel if needed to communicate with non-incident resources. The command channel is the primary channel for all medical emergencies. CALCORD also may be used for A/G communications with non-incident aircraft. Resources assisting in South Zone division should continue to use regularly assigned tactical channels.

8. Division/Group Communication Summary						
Function	Channel	RX Frequency N/W	RX Tone/NAC	TX Frequency N/W	TX Tone/NAC	Mode
COMMAND	2	171.5375 N	107.2	164.8625 N	107.2	
TACTICAL	CH 10/ TAC 10	168.2500 N	107.2	168.2500 N	107.2	
TACTICAL	CALCORD - CH 15	156.0750 N	156.7	156.0750 N	156.7	
AIR GUARD	16	168.6250 N		168.6250 N	110.9	

9. Prepared By (Resource Unit Leader)	Approved By (Planning Section Chief)	Date	Time
JULIE VORACHEK, RESL (T)	PETER BUTTNER	08/26/2021	2000

AIR OPERATIONS SUMMARY ICS-220

Incident Name and Incident Number NORTH AND SOUTH ZONES/ Monument SHF 001187	Sunrise 633	Startup 703	Cutoff 1917	Sunset 1947
General Remarks, Safety Notes, Hazards, Air Operations Special Equipment, etc. TRACK ALL DIPSITE LOCATIONS / NUMBER OF DIPS / GALLONS TAKEN. TRACK ALL DROP LOCATIONS / NUMBER OF DROPS / GALLONS DROPPED All GPS DATA TO BE COLLECTED IN DEGREES, MINUTES, DECIMAL MINUTES, FORMAT. AVOID Aerial Application of Retardant / Foam / Agent within 300' of Waterways, Bodies of Water, etc. If Retardant / Foam / Agent is Dropped Within These Areas Immediately Notify the AOB/D and Provide the Following Information: Lat / Long, Estimated Number of Gallons and a Map Detailing The Area.				

Time Prepared 1800	Date Prepared Thursday, August 26, 2021	Prepared By Niko Matteoli
Shutdown 2017	Operational Period - Date Friday, August 27, 2021	Operational Period - Time 0700-0700
Willow Creek 40° 56.87	TFR Information Request # A-205 Radius: Polygon NM Altitude: 11500' Centerpoint: Lat Long NOTAMS: 1/0550 Frequency 126.2750 http://tfr.faa.gov/tfr2/list.html	Rescue Ship Information Day G822 Night G822 Name Phone Make/Model UH60 UH60 Location Redding Redding Request Procedure for These Aircraft: Through Incident Communications See Medical Plan For Additional Info

SOUTH-(SOUTH COMMUNICATIONS)

Frequencies	RX	Tone	TX	AM / FM	Tone	AM / FM
AIR TACTICS	169.7250		169.7250	FM		FM
AIR / AIR TFR	126.2750		126.2750	AM		AM
SOUTH COMMAND CDF C2	151.2650	103.5 (8)	159.3300	FM	151.4 (14)	FM
SOUTH CMD CDF C11 DIV RR	151.1675	103.5 (8)	159.3975	FM	151.4 (14)	FM
SOUTH ROTOR VICTOR	128.7750		128.7750	AM		AM
SOUTH ROTOR BRIEFING	134.1750		134.1750	AM		AM
A/G- Command	171.8625		171.8625	FM		FM
SOUTH A/G - Tactical CDF T25	159.2775	192.8 (16)	159.2775	FM	192.8 (16)	FM
TOLC (Sky Ranch)	167.9500	151.4 (14)	167.9500	FM	151.4 (14)	FM
DECK (Sky Ranch)	163.1000		163.1000	FM		FM
CALCORD - MEDICAL	156.0750	156.7 (6)	156.0750	FM	156.7 (6)	FM
AIRGUARD - Emergency Only	168.6250		168.6250	FM	110.9 (1)	FM

NORTH ZONE-(NORTH COMMUNICATIONS)

Frequencies	RX	Tone	TX	Tone	AM / FM
AIR TACTICS	169.7250		169.7250		FM
AIR / AIR TFR	126.2750		126.2750		AM
NORTH COMMAND	173.8125	107.2 (10)	168.4750	107.2 (10)	FM
NORTH ROTOR VICTOR	123.7750		123.7750		AM
A/G- Command	171.8625		171.8625		FM
NORTH A/G - Tactical	171.0375		171.0375		FM
DECK (Willow Creek)	168.3500		168.3500		FM
CALCORD - MEDICAL	156.0750	156.7 (6)	156.0750	156.7 (6)	FM
AIRGUARD - Emergency Only	168.6250		168.6250	110.9 (1)	FM

South Zone Helibase

FAA #	Type	Make/Model	Helibase	Avail	Start	Remarks
1CH	I	BV 107 II	Sky Ranch	800	830	A-10015
5CK	I	UH-60	Sky Ranch	800	830	A-10016
4CK	I	UH-60	Sky Ranch	800	830	A-10000
7FH	I	UH-60	Sky Ranch	800	830	A-10001
3TW	I	UH-60	Sky Ranch	800	830	A-10002
0FG	II	UH-1H	Sky Ranch	800	830	A-10017
68U	II	S58T	Sky Ranch	800	830	A-10009
3CS	II	UH-1H	Sky Ranch	800	830	A-10008
2BH	III	BH206L+	Sky Ranch	800	830	A-10029
9TA	III	AS350B3	Sky Ranch	800	830	A-10014
9TH	III	BH206L	Sky Ranch	800	830	A-10013

North Zone Helibase

FAA #	Type	Make/Model	Helibase	Avail	Start	Remarks
1CK	I	S61	Willow	800	830	A-11
5TH	I	KMAX	Willow	800	830	A-10
8AC	I	S64F	Willow	800	830	A-34
520	II	B-205	Willow	800	830	A-68
3HT	II	B-205	Willow	800	830	A-97
503	III	B-407	Willow	800	830	A-152
UR301/302	UAS		Willow	0800	830	
UR31	UAS		Willow	800	830	A-144

South Zone

Position	Name	Phone	Trainee	Phone
AOBD	Niko Matteoli	(704) 488-2460		
AOBD (D)	Tim Shiffer	(530) 448-2418		
ASGS	Josh Faulkner	(530) 356-1351		
HEBM	David Lindsey	(707) 696-6212	G. Engen	(707) 229-7699
ATGS				
HLCO	Rudy Ynigues	(530) 515-4440		
HLCO	Tim Shiffer	(530) 448-2418		

North Zone

Position	Name	Phone	Trainee	Phone
AOBD	Mike Maguire	(828) 775-1871		
ASGS	Greg Scully	(907) 240-4660		
HEBM	Dennis Lujano	(559) 790-1386		
ATGS	Gordon Amundson	(907) 712-4789		
HLCO	Casey Jones	(559) 696-3878		

ICS 205 - INCIDENT RADIO COMMUNICATIONS PLAN

1. Incident Name: Monument Fire
South Zone
Incident Channels

2. Date/Time Prepared: Date: 08/26/2021 Time: 1930


3. Operational Period: Date From: 08/27/21 Date To: 08/28/21
Time From: 0700 Time To: 0700

4. Communications	Ch#	Function	Name	Assigned To	Rx Freq	Rx Tone	Tx Freq	Tx Tone	Notes
	1	COMMAND	CDF C2	ALL DIVS	151.2650	103.5 (T8)	159.3300	151.4 (T14)	
	2	COMMAND	CDF C11	BRANCH 30	151.1675	103.5 (T8)	159.3975	151.4 (T14)	TO BE USED IN BRANCH 30 ONLY
	3	TACTICAL	VFIRE 22	DIV DD	154.2650N	156.7 (T6)	154.2650N	156.7 (T6)	
	4	TACTICAL	VFIRE 23	DIV HH	154.2950N	156.7 (T6)	154.2950N	156.7 (T6)	
	5	TACTICAL	VFIRE 24	DIV NN	154.2725N	156.7 (T6)	154.2725N	156.7 (T6)	
	6	TACTICAL	CDF T26	DIV RR	159.2925N	192.8 (T16)	159.2925N	192.8 (T16)	
	7	TACTICAL	CDF T27	SOUTH CONT 1	159.3075N	192.8 (T16)	159.3075N	192.8 (T16)	
	8	TACTICAL	CDF T28	SOUTH CONT 2	151.1825	192.8 (T16)	151.1825	192.8 (T16)	
	9	TACTICAL	CDF T15	Monument Fuels	159.2700	192.8 (T16)	159.2700	192.8 (T16)	Travel Net for Monument Fuels
	10								
	11								
	12								
	13	A/G CMD	A/G CMD	ALL DIVS	171.8625N		171.8625N		A/G COMMAND
	14	AIR TO GROUND	CDF T25	ALL DIVS	159.2775	192.8 (T16)	159.2775	192.8 (T16)	A/G TACTICAL
	15	MEDICAL	CALCORD	ALL DIVS	156.0750N	156.7 (T6)	156.0750N	156.7 (T6)	MEDICAL COORDINATION
	16	AIRGUARD	GUARD 26	ALL DIVS	168.6250N		168.6250N	110.9 (T1)	EMERGENCY USE ONLY
	17								
	18								
	19								
	20	AIRGUARD	GUARD 26	ALL DIVS	168.6250N		168.6250N	110.9 (T1)	EMERGENCY USE ONLY

5. Special Instructions

TO CONFIRM YOU HAVE THE MOST CURRENT CLONE, ENSURE YOUR DISPLAY OF CHANNEL 16 OR 20 MATCHES CHANNEL 16 OR 20 OF THE 205 - HEIGHT AND POWER ARE KEY WHEN USING RADIOS; BE AT A HIGH POINT, USE A MOBILE IF POSSIBLE, AND USE RADIO RELAYS WHEN NEEDED

6. Prepared by (Communications Unit Leader): Name: C.Johns

Signature: 

ICS 205 - CONTROLLED UNCLASSIFIED INFORMATION/BASIC

NIMS IAP Date/Time: 08/26/21 1930

INCIDENT RADIO COMMUNICATIONS		Incident Name	Date/Time Prepared	Operational Period Date/Time
PLAN ICS 205		Monument North IA	8/26/21 @ 1800	Day-Night 8/27/21 0600 - 8/28/21 0600

4. BASIC RADIO CHANNEL UTILIZATION									
Ch #	Channel Name	Assignment	RX Frequency Narrowband (N) Wideband (W)	RX Tone/NAC	TX Frequency Narrowband (N) Wideband (W)	TX Tone/NAC	Mode Digital (D) Analog (A) Mixed (M)	Remarks	
1	COMMAND	SHF-R	171.5750	N	165.0125	N	OST	A	Shasta Forest Repeater (Tone 4,5,6,9)
2	COMMAND	SERV-R	171.5000	N	164.8250	N	OST	A	Shasta Service Net (Tone 4,6)
3	COMMAND	SHU-L	151.1600	N	159.2700	N	OST	A	CALFIRE Shasta Command (Tone 3,7)
4	COMMAND	SRF-R	172.3750	N	164.1750	N	OST	A	Six Rivers Forest Repeater (Tone 5,6)
5	TACTICAL	NIFC T2	168.2000	N	168.2000	N		A	I/A Tactical
6	TACTICAL	RS TAC 4	166.5500	N	166.5500	N		A	I/A Tactical
7	TACTICAL	RS TAC 5	167.1125	N	167.1125	N		A	I/A Tactical
8	TACTICAL	CDF T11	151.4450	N	151.4450	N	192.8	A	I/A Tactical (Tone 16)
9	LOCAL GOV RPT	XTR-R	154.7850	N	158.7600	N		A	Trinity County Command (Tone 10,13)
10	MONUMENT CMD	MON CM2	171.5375	N	164.8626	N	107.2	A	Monument Command Hayfork Bally (Tone 10)
11	MONUMENT CMD	MON CM4	173.5000	N	165.8125	N	107.2	A	Monument North Command Brush Mountain (Tone 10)
12	MONUMENT AIR TO GROUND	AG TAC	171.0375	N	171.0375	N		A	Monument North A/G Brush Mountain
13	AIR TO GROUND SECONDARY	AG08 SEC	166.8750	N	166.8750	N		A	IA A/G Secondary
14	AIR TO GROUND PRIMARY	AG43 PRI	167.6000	N	167.6000	N		A	IA A/G Primary
15	CALCORD	MEDICAL COORDINATION	156.0750	N	156.0750	N	156.7	A	MEDIVAC Coordination (Tone 6)
16	EMERGENCY AIR	GUARD	168.6250	N	168.6250	N	110.9	A	Emergency (Tone 1)

I-205 Prepared By *Ross Atkinson* **USE HUMAN REPEATERS WHEN NEEDED.**

**INCIDENT RADIO COMMUNICATIONS
PLAN ICS 205**

Incident Name		Date/Time Prepared		Operational Period Date/Time					
Monument North Fire		8/26/21 @ 1800		Day-Night 8/27/21 0600 - 8/28/21 0600					
4. BASIC RADIO CHANNEL UTILIZATION									
Ch #	Channel Name	Assignment	RX Frequency Narrowband (N) Wideband (W)	RX Tone/NAC	TX Frequency Narrowband (N) Wideband (W)	TX Tone/NAC	Mode Digital (D) Analog (A) Mixed (M)	Remarks	
1	CMD 1	ALL DIVISIONS	173.8125	107.2	168.4750	107.2	A	CMD Located on Weaver Bally	
2	CMD 2	ALL DIVISIONS	171.5375	107.2	164.8625	107.2	A	CMD located On Hayfork Bally	
3	CMD 3	ALL DIVISIONS	171.0875	107.2	164.6000	107.2	A	CMD Located on Bully Choop	
4	CMD 4	ALL DIVISIONS	173.5000	107.2	165.8125	107.2	A	CMD Located on Brush Mt.	
5	CMD 5	ALL DIVISIONS	173.6500	107.2	164.8125	107.2	A	CMD Located on Ironside Lookout	
6	TAC 6	DIV A	168.0500	107.2	168.0500	107.2	A		
7	TAC 7	DIV U, River Group West	168.6000	107.2	168.6000	107.2	A		
8	TAC 8	DIV G, DIV W Staging	166.7250	107.2	166.7250	107.2	A		
9	TAC 9	DIV E	166.7750	107.2	166.7750	107.2	A	NIGHT DIVISION A/E	
10	TAC 10	DIV Z, DIV M	168.2500	107.2	168.2500	107.2	A	NIGHT DIVISION W/Z	
11	TAC 11	NORTH CONTINGENCY	168.2375	107.2	168.2375	107.2	A	NORTH CONTINGENCY DAY AND NIGHT	
12	A/G CMD	A/G CMD	171.8625		171.8625		A	Incident Air to Ground Command	
13	A/G TAC	ALL DIVISIONS	171.0375		171.0375		A	Incident Air to Ground Tactical	
14	IA-CMD	IA-CMD	171.5750		165.0125	136.5	A	Shasta Forest Repeater	
15	CALCORD	MEDICAL COORDINATION	156.0750	156.7	156.0750	156.7	A	(TONE 6)	
16	EMERGENCY AIR	GUARD	168.6250		168.6250	110.9	A	EMERGENCY HAILING OF AIRCRAFT	
I-205 Prepared By		Gregory S Loquist - COM1 (t)				USE HUMAN REPEATERS WHEN NEEDED.			

MEDICAL PLAN ICS 206	1. INCIDENT NAME MONUMENT	2. DATE PREPARED 08/26/2021	3. TIME PREPARED 1800	4. OPERATIONAL PERIOD 08/27-08/28, 0700-0700
---------------------------------	-------------------------------------	---------------------------------------	---------------------------------	--------------------------------------------------------

5. INCIDENT MEDICAL AID STATIONS				
MEDICAL SUPPLY STATIONS	LOCATION			PARAMEDICS
CAL MAT	ANDERSON BASE CAMP			MD
MERT	TRINITY RIVER CAMP			PA

6. TRANSPORTATION				
A. AMBULANCE SERVICES				
NAME	LOCATION	PHONE	PARAMEDICS	
			YES	NO
AMBULANCE 103	HAYFORK FS BR 30	CMD CHANNEL	X	
REMS 1	1-BR 30 DIV NN	CMD CHANNEL	X	
REMS 5(UTV), , REMS 7 (DAY)	5-BR 30 DIV RR 7-BR 30 DIV RR	CMD CHANNEL	X	
REMS 2	2-BR 20 DIV HH	CMD CHANNEL	X	

B. AIR AMBULANCES				
NAME	LOCATION	PARAMEDICS		
		YES	NO	
CALIFORNIA GUARD 822 (24 HOUR HOIST)	Redding Airport --Contact CMD	X		

7. HOSPITALS								
NAME	ADDRESS	TRAVEL TIME		PHONE Frequency	HELIPAD		BURN CENTER	
		AIR	GRd		YES	NO	YES	NO
SHASTA REG MED CTR TRAUMA LVL 3	1100 BUTTE ST, REDDING 40° 35.106'N, -122° 23.268'W	15 Min	45 Min	(530) 244-5400 468.025 Tx, 468.025 Rx	X			X
MERCY MED CTR TRAUMA LVL 2	2175 ROSALINE AVE, REDDING 40° 34.332'N, -122° 23.796'W	15 Min	45 Min	(530) 225-7201 468.075 Tx, 463.000 Rx	X			X
UC DAVIS TRAUMA LVL 1	2315 STOCKTON BLVD, SACRAMENTO 38° 33.360'N, -121° 27.330'W	1.25 Hour	3.5 Hour	(916) 734-2011 446.525 Tx, 203.5 Rx	X		X	
TRINITY HOSPITAL WEAVERVILLE	60 EASTER AVENUE, WEAVERVILLE 40° 44.275'N, -122° 56.359'W	10 Min	15 Min	(530) 623-5541 x1	X			X

8. MEDICAL EMERGENCY PROCEDURES

EMERGENCY FREQUENCY:
"LINE EMERGENCY"

- Crew Supervisor will contact Division Supervisor with patient complaint/condition, location and resource needs.
- Division/Group Supervisor contacts:
 1. Closest EMS resource
 2. Communications Unit
 - Communications Unit contacts:
 1. Ground or Air ambulance as requested
 2. Operations
 3. Safety
 4. Medical Unit
 - Division Supervisor or designee will serve as point of contact and run medical emergency on assigned channel.
 1. A pre-assigned COMMAND frequency and CALCORD should be used for IWI and only for duration of need.
 - Communications Unit will clear command channel for emergency traffic as needed and only for duration of need.

CAMP EMERGENCY:

Contact Medical Unit with patient complaint/condition and location. Medical Staff will respond to stabilize incident:

- Medical Unit contacts:

1. Communications	4. Operations
2. Safety	5. Crew Supervisor
3. Logistics	6. Comps/Claims

INJURY REPORTING PROCEDURES

CHIEF COMPLAINT _____
 LOCATION OF PATIENT _____
 POINT OF CONTACT _____
 TRANSPORTATION REQUESTED BY: AIR ___ GROUND ___
 POINT OF PICKUP _____
 LAT _____ LONG _____
 PATIENT UNIT ID _____
 IS AN EMT/P WITH PATIENT: YES ___ NO ___
 AGE _____
 SEX: MALE ___ FEMALE ___

ALL EMERGENCIES---Secure the area and identify witnesses for later investigation.

**Keep an accurate log of events.
 IN CAMP EMERGENCY**

**EMERGENCY #
 916-883-0934**

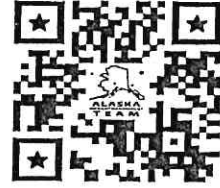
ICS 206

9. PREPARED BY: (Medical Unit Leader)
JOSH STALEY-(MEDL)

-37-

10. REVIEWED BY: (Safety Officer)
JACK PICCININI-(SOPR)

MONUMENT NORTH FIRE
Finance Process
CA-SHF-001187



For resources hired out of state and have VIPR agreement scan QR code

IMPORTANT INFORMATION: If you are a Monument North Resource, i.e., you have a RO # four digits or less (E-489), and you are 'loaned' to the South Zone, please note **SOUTH ZONE** or **Monument South Zone** on your Shift Ticket / CTR.

Please send all documents to 2021.monument.finance@firenet.gov for all resources.

Email Subject Line: TIME/Resource Order No./ Resource Name/Position Code – Put TIME, CTR, SHIFT TICKET in the subject line with your information

(Example: TIME/O-200/SBear/Safety)

Email all documents that pertain to your assignment:

Agency Overhead	Agency ADs / EFFs	VIPR Resources	Contract / Agency Crews	Cooperators
Resource Order Shift Tickets	Resource Order Casual Hire Form Shift Tickets	Resource Order VIPR Agreement Schedule of Items Inspections Shift Tickets	Resource Order Manifest Agreement / Contract Schedule of Items Inspections Crew Time Reports	Resource Order Agreement Shift Tickets / CTRs

Submit Equipment Shift Tickets or Crew Time Reports (CTRs) daily to 2021.monument.finance@firenet.gov

Please include your email address and phone number in the body of the email when sending your documents.

Any questions, please call: FINANCE – (213) 431-4035 – Weaverville
(425) 500-9464 – Weaverville
(425) 500-9475 – Willow Creek
(360) 624-2315 – Luann Grover

COMP / CLAIMS

Weaverville

Barb Haxby
barbara_haxby@firenet.gov
(360) 601-8820

Willow Creek

Susan Haggerty
susan_haggerty@firenet.gov
(586) 943-3016

\$ FINANCE MESSAGE \$

Please No Off Site Feeding Unless Approved by a Finance Section Chief. Certain circumstances will need to apply for our approval.

CAL FIRE PERSONNEL

Make sure to create a paper FC-33 so we can update.

If anyone has any CalCard travel receipts and meal/lodging sign in sheets, please get a copy to Finance.

LOCAL GOVERNMENT RESOURCES

Make sure you check in with TIME Unit for ABH or F-42 Paperwork.

ALL HIRED EQUIPMENT

Make sure you get your shift ticket filled out by your **Division Group Supervisor or Supervisor.**

ALL SUPERVISORS OF HIRED EQUIPMENT

Shift Tickets for hired equipment need to be signed and turned in to TIME daily. Ensure the shift ticket is filled out completely (including evaluation), accurately and legibly. **Example included in IAP.**

PROPERTY DAMAGE or INJURIES

Please report any property damage caused by suppression activities and/or injuries to the Comp/Claims Unit.

FINANCE MESSAGE

TIME UNIT

We are undergoing a new process to speed up Demob for *Cal Fire - Hired Equipment*. Financial payment documents for *Cal Fire - Hired Equipment* will be completed through E-Mail with DocuSign unless other arrangements have been made prior to Demob

When Demobing from the Incident, please bring the Time Unit the following information...

- EMAIL ADDRESS FOR REPRESENTATIVE WHO WILL SIGN DOCUMENTS
- NAME OF SIGNEE
- PHONE # FOR SIGNEE
- GOLDEN TICKETS

Hired Equipment Suppliers will meet with a Time Representative at Demob, who will assist with gathering all information to ensure proper payment of equipment

***Electronic processing will allow for Faster Processing and Payment to Supplier's**

****Documents can be signed and completed with any Smart Device (Smart Phone, Tablet, Computer) and does NOT require an account with DocuSign to complete**

Any Questions call 530-906-4892 or E-Mail imt5finance@gmail.com

24 Hour Shift

EMERGENCY SHIFT TICKET and EVALUATION FORM						Contractor Name						
The responsible Government Officer will complete this form each shift						Fireline Builders						
Incident or Project Name August Complex West Zone		Incident Number CAMEU010843		Request Number E-99		Operator #1 Jim Smith	Operator #2 John Jones					
Agreement Number LNU01234567						Operator Furnished By: <input checked="" type="checkbox"/> Contractor <input type="checkbox"/> Government						
Equipment Make CAT		Equipment Model / Type Dozer D6H				Operating Supplies Furnished By: <input checked="" type="checkbox"/> Contractor <input type="checkbox"/> Government						
Serial Number 6LN3344		Licence Number				Equipment Status <input checked="" type="checkbox"/> Inspected <input checked="" type="checkbox"/> Under Agreement						
Equipment Use						Released by Government <input type="checkbox"/> Withdrawn by Contractor <input type="checkbox"/>						
Date Mo / Day		Start	Stop	Work	(Circle) Hours / Days / Miles	Remarks/Comments **						
8/2		0700	2400	17	Division J							
8/3		0001	0700	7	Division J							
Vendor Rating						Govt. Rep. Name and Position - PRINT Mike Brown, Div J						
<table border="1" style="width: 100%; text-align: center;"> <tr> <td>Poor*</td> <td>Avg.</td> <td>Good</td> <td>Exc.</td> <td>N/A</td> </tr> </table>						Poor*	Avg.	Good	Exc.	N/A	Govt. Rep. Signature <i>Mike Brown</i>	
Poor*	Avg.	Good	Exc.	N/A								
Met Performance Expectations						Contractor Signature <i>Jim Smith</i>						
Equipment in Safe Working Condition						Date 08/03/16 Time 0700						
Operator Skill Level												
Operates Safely												
Operator's Cooperation Level												
Overall Performance												
<p>* NOTE: Any rating of POOR requires an explanation in Comment Section.</p> <p>**Final evaluation or for more documentation, use an ICS Form 230 or equivalent.</p>						CALFIRE 297 (Rev 3-2011)						
Pink - Finance		Blue - Home Unit HE Coordinator		Yellow - Vendor		White - Govt Representative						

12 Hour Shift

EMERGENCY SHIFT TICKET and EVALUATION FORM						Contractor Name						
The responsible Government Officer will complete this form each shift						H2O For You						
Incident or Project Name August Complex West Zone		Incident Number CAMEU010843		Request Number E-89		Operator #1 James Russell	Operator #2					
Agreement Number LNU1111199						Operator Furnished By: <input checked="" type="checkbox"/> Contractor <input type="checkbox"/> Government						
Equipment Make Peterbilt		Equipment Model / Type 2000 Gallon				Operating Supplies Furnished By: <input checked="" type="checkbox"/> Contractor <input type="checkbox"/> Government						
Serial Number 11145N		Licence Number SE653574				Equipment Status <input checked="" type="checkbox"/> Inspected <input checked="" type="checkbox"/> Under Agreement						
Equipment Use						Released by Government <input type="checkbox"/> Withdrawn by Contractor <input type="checkbox"/>						
Date Mo / Day		Start	Stop	Work	(Circle) Hours / Days / Miles	Remarks/Comments **						
8/2		0001	0700	7	Off Shift							
8/2		0700	2000	13	Division B							
8/2		2000	2400	4	Off Shift							
Vendor Rating						Govt. Rep. Name and Position - PRINT Steve Hampton, Div B						
<table border="1" style="width: 100%; text-align: center;"> <tr> <td>Poor*</td> <td>Avg.</td> <td>Good</td> <td>Exc.</td> <td>N/A</td> </tr> </table>						Poor*	Avg.	Good	Exc.	N/A	Govt. Rep. Signature <i>Steve Hampton</i>	
Poor*	Avg.	Good	Exc.	N/A								
Met Performance Expectations						Contractor Signature <i>James Russell</i>						
Equipment in Safe Working Condition						Date 08/02/16 Time 2000						
Operator Skill Level												
Operates Safely												
Operator's Cooperation Level												
Overall Performance												
<p>* NOTE: Any rating of POOR requires an explanation in Comment Section.</p> <p>**Final evaluation or for more documentation, use an ICS Form 230 or equivalent.</p>						CALFIRE 297 (Rev 3-2011)						
Pink - Finance		Blue - Home Unit HE Coordinator		Yellow - Vendor		White - Govt Representative						

24 Hour Shift to 12 Hour Shift

EMERGENCY SHIFT TICKET and EVALUATION FORM						Contractor Name	
The responsible Government Officer will complete this form each shift						Fireline Builders	
Incident or Project Name		Incident Number		Request Number		Operator #1	Operator #2
August Complex West Zone		CAMEU010843		E-99		Jim Smith	John Jones
Agreement Number						Operator Furnished By:	
LNU01234567						<input checked="" type="checkbox"/> Contractor	<input type="checkbox"/> Government
Equipment Make		Equipment Model / Type				Operating Supplies Furnished By:	
CAT		Dozer D6H				<input checked="" type="checkbox"/> Contractor	<input type="checkbox"/> Government
Serial Number			Licence Number			Equipment Status	
6LN3344						<input checked="" type="checkbox"/> Inspected	<input checked="" type="checkbox"/> Under Agreement
Equipment Use						Released by Government	
(Circle) Hours / Days / Miles						Withdrawn by Contractor	
Date	Start	Stop	Work	Assignment			
Mo / Day							
8/2	0001	700	7	Division J			
8/2	0700	2300	16	Division J			
8/2	2300	2400	1	OFF SHIFT			
Vendor Rating						Remarks/Comments **	
		Poor*	Avg.	Good	Exc.	N/A	Supplier went from 24 hour to 12 hour shift
Met Performance Expectations						Govt. Rep. Name and Position - PRINT	
Equipment in Safe Working Condition						Mike Brown Div. J	
Operator Skill Level						Govt. Rep. Signature	
Operates Safely						Mike Brown	
Operator's Cooperation Level						Contractor Signature	
Overall Performance						Jim Smith	
						Date	Time
						08/02/20	0700
* NOTE: Any rating of POOR requires an explanation in Comment Section.						CALFIRE 297	
**Final evaluation or for more documentation, use an ICS Form 230 or equivalent.						(Rev 3-2011)	
Pink - Finance		Blue - Home Unit HE Coordinator		Yellow - Vendor		White - Govt Representative	

12 Hour Shift

EMERGENCY SHIFT TICKET and EVALUATION FORM						Contractor Name	
The responsible Government Officer will complete this form each shift						H2O For You	
Incident or Project Name		Incident Number		Request Number		Operator #1	Operator #2
August Complex West Zone		CAMEU010843		E-89		James Russell	
Agreement Number						Operator Furnished By:	
LNU11111199						<input checked="" type="checkbox"/> Contractor	<input type="checkbox"/> Government
Equipment Make		Equipment Model / Type				Operating Supplies Furnished By:	
Peterbilt		2000 Gallon				<input checked="" type="checkbox"/> Contractor	<input type="checkbox"/> Government
Serial Number			Licence Number			Equipment Status	
11145N			SE653574			<input checked="" type="checkbox"/> Inspected	<input checked="" type="checkbox"/> Under Agreement
Equipment Use						Released by Government	
(Circle) Hours / Days / Miles						Withdrawn by Contractor	
Date	Start	Stop	Work	Assignment			
Mo / Day							
8/3	0001	0700	7	Off Shift			
8/3	0700	2000	13	Division B			
8/3	2000	2400	4	Off Shift			
Vendor Rating						Remarks/Comments **	
		Poor*	Avg.	Good	Exc.	N/A	Steve Hampton, Div B
Met Performance Expectations						Govt. Rep. Name and Position - PRINT	
Equipment in Safe Working Condition						Steve Hampton	
Operator Skill Level						Govt. Rep. Signature	
Operates Safely						James Russell	
Operator's Cooperation Level						Contractor Signature	
Overall Performance						Date	
						08/03/20	2000
* NOTE: Any rating of POOR requires an explanation in Comment Section.						CALFIRE 297	
**Final evaluation or for more documentation, use an ICS Form 230 or equivalent.						(Rev 3-2011)	
Pink - Finance		Blue - Home Unit HE Coordinator		Yellow - Vendor		White - Govt Representative	

CAL FIRE

INCIDENT MANAGEMENT TEAM

WATER USAGE LOG

DATE: _____

Division / Group: _____

AGENCY ID / VENDOR: _____

I.e., Strike Team 1110C, Acme Water Tenders

REQUEST # _____

TURN INTO FINANCE DAILY

WATER SOURCE LOCATION	Hydrant	Open source i.e. pond	Tank	Gallon s Used	Property Owner / Contact Number if known **

****Please note if you made contact with property owner and their contact.**

Information: _____.

This document is intended to track, record and validate the amount of water used on a incident. It's not intended to review the performance of equipment using the water on an incident.



PUBLIC INFORMATION SECTION



Incident Information Line:
South Zone (949)433-2638 North Zone (530)628-0039

Status	
Incident Start Date: 7/30/2021	Incident Start Time: 6:00 p.m.
Total acres:	Containment:
Cause: Lightning	Total Personnel:

MEDIA – The California State Penal Code Section 409.5(d) allows the news media to enter scenes of disaster, riot or civil disturbance. Properly identified members of the news media should not be restricted from entering locations specified within the code. However, this does not include crime scenes, private property and does not imply that the news media may interfere with incident operations while they are in the areas of concern. More information can be found [here](#).



CAL FIRE SOCIAL MEDIA POLICY – When assigned to a CAL FIRE incident, you will adhere to the CAL FIRE Social Media Policy, Section 0691. You can find further information about the CAL FIRE Social Media Policy [here](#).



PHOTOGRAPHS AND VIDEOS OF INCIDENT – We are in a new era of media. Media no longer means news/broadcast industry, but now refers to anyone that has the capability to shoot video, photographs and post them onto social media sites in a matter of minutes. Unfortunately, we have seen some instances of photographs or videos that have depicted unsafe, unprofessional or embarrassing circumstances which are a serious breach of ethics. When this happens, it reflects poorly on all that are attached to this incident. Posting an inappropriate video, photo or blog comment could expose oneself to unwanted ramifications. It may be unsafe to shoot photos or video and a firefighter who is concentrating on a camera loses their situational awareness.

The Public Information Office would like copies of the video and pictures that you safely took while not in an emergency situation, fire suppression activity or in an overhead assignment. Bring your video and pictures to the Public Information trailer; they will be reviewed and possibly uploaded to our many CAL FIRE social media sites. Remember, we don't want photographs or videos that depict unsafe, unprofessional or embarrassing circumstances, which are a serious breach of ethics.



LOST AND FOUND – The Information Section will manage lost and found items for the incident.

MAIL SERVICE – The Information Section can assist you with sending and receiving mail.

Anderson Fairgrounds
 ATTN: South Zone Monument Fire Information
 (Your Name)
 1890 Briggs Street
 Anderson, CA 96007

Training Message

Did you just arrive at Base Camp??

Are you a Trainee??

If so, please stop by and see the Training Specialist.

Please bring the following with you:

- Taskbook
- Qualification Card



TRAINING MESSAGE

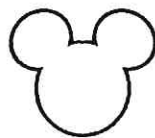
If you have just arrived at The Monument Fire as a Trainee, please don't forget to check in with the Training Specialist.

Training is located behind the Briefing Hall
It only takes a few minutes to check in.

Team 5 is dedicated to providing all Trainees working with Team 5 a complete Training Package.

Please do your part and check in.

Any Training questions, please stop by.



TRAINING MESSAGE

TRAINERS

Remember to review the Taskbook with your Trainees each day and set goals for the operational period.

TRAINEES

Always keep your Taskbook secured.

If lost, you run the risk of losing credit for the tasks completed.

If you are a Trainee and have not checked in, please do so ASAP.

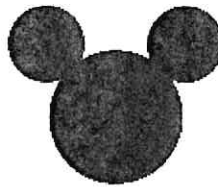


TRAINING MESSAGE

Do you want credit for this assignment?

Please make sure to check out with Training
before you demob

Training is located behind the Briefing Hall



Training Message

DEMOBING???

TRAINERS

Please complete the following documents for your Trainees:

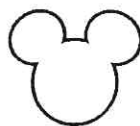
- Task book (sign the tasks completed)
- Evaluations
- ICS 225 – Please strive to give your Trainee an honesty and in-depth performance rating.

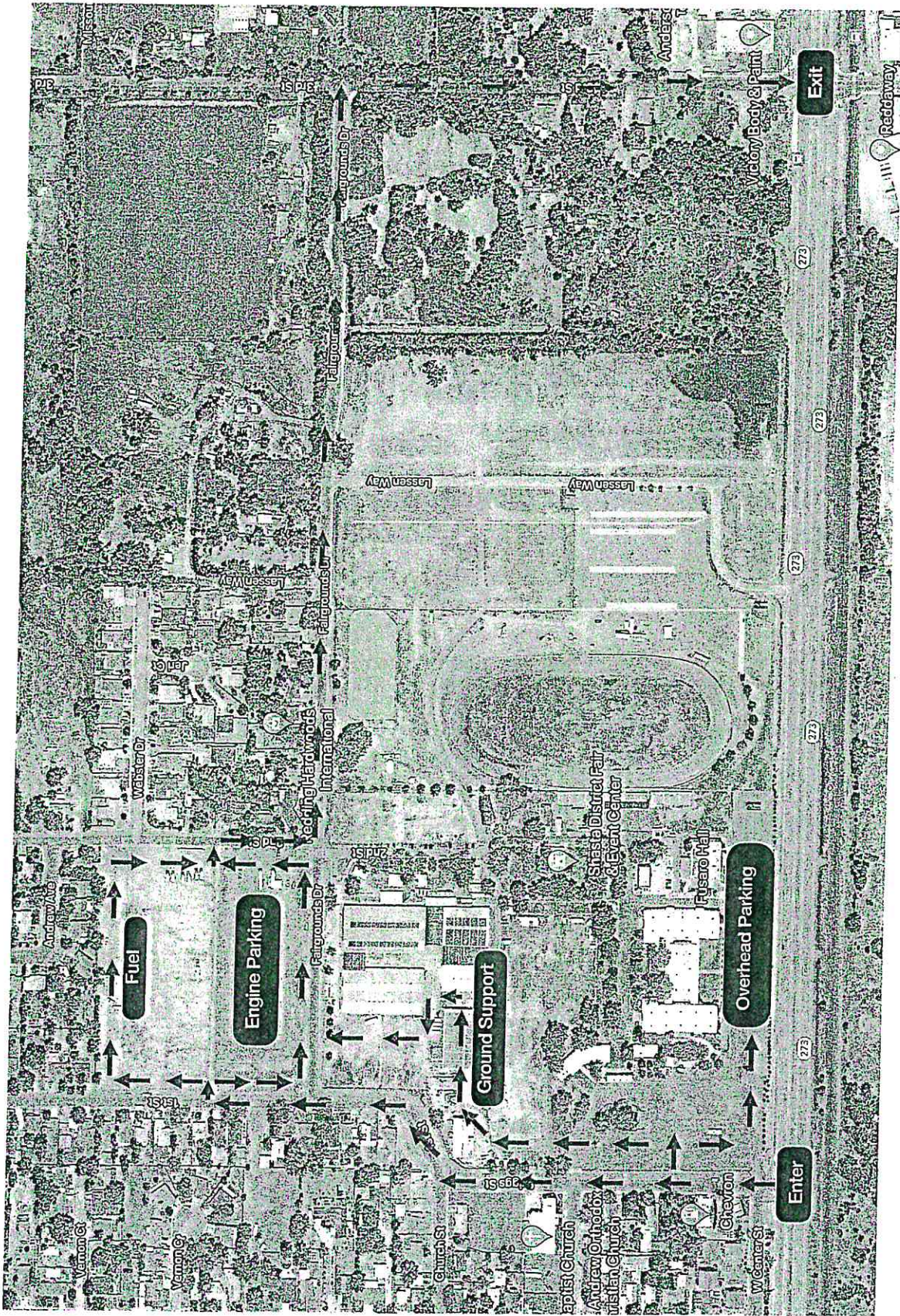
TRAINEES

Prior to demobing, please bring the following to Training:

- Task Book
- Evaluations
- ICS 225

If you have your documents, it is not necessary to bring your trainer with you to Training.





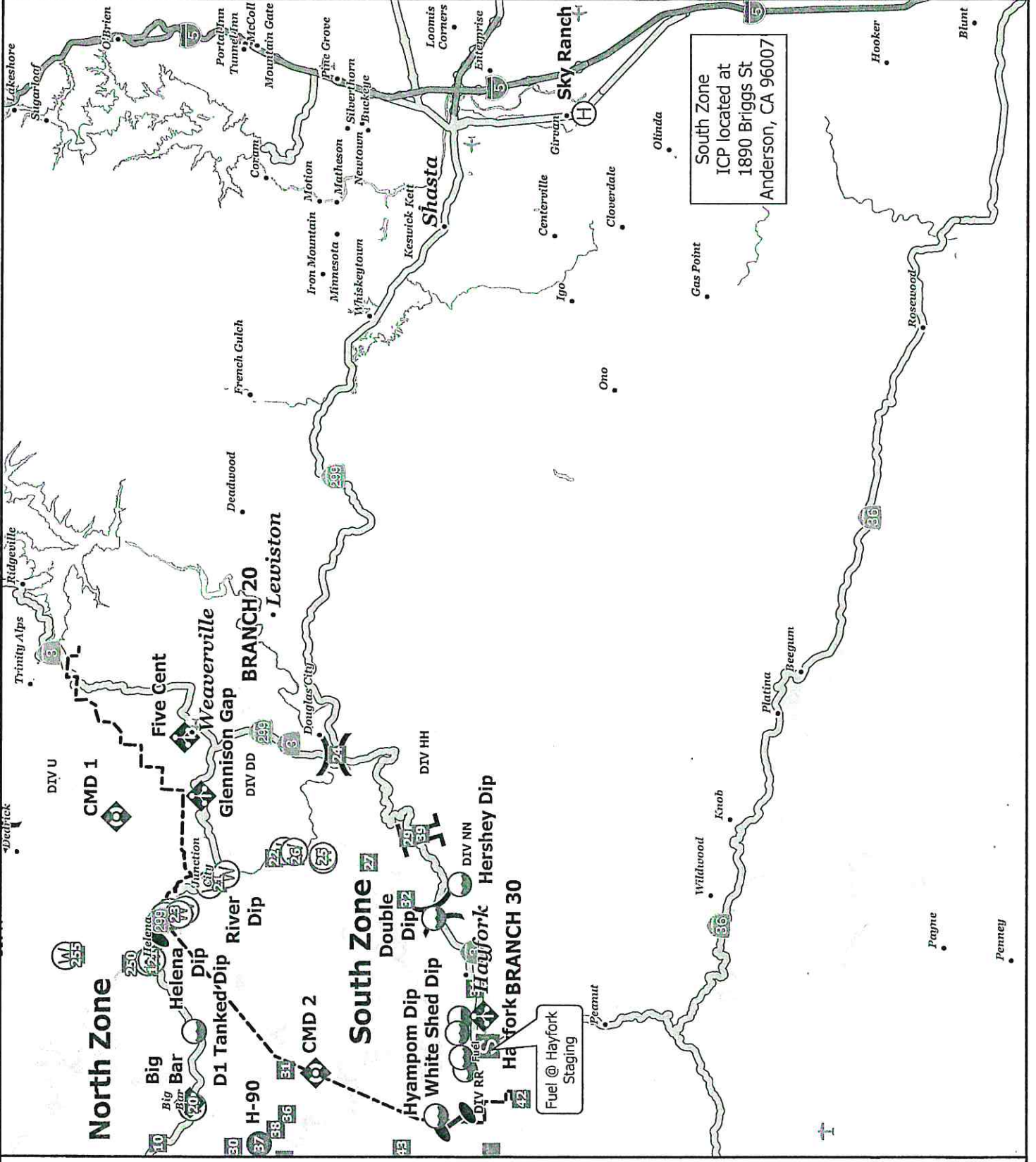
**MONUMENT FIRE
ANDERSON FAIRGROUNDS
FACILITIES MAP**
CA-SHF-001187





MONUMENT FIRE
 ANDERSON FAIRGROUNDS
 FACILITIES MAP
 CA-SHF-001187





South Zone
ICP located at
1890 Briggs St
Anderson, CA 96007



Transportation
Monument Fire
CA-SHF-00187
0700 - 0700 NAD 83

- Dip Site
- Mobile Retardant Base
- Helispot
- Helibase
- Division Break
- Branch Break
- Zone Break
- Drop Point
- Staging Area
- Mobile Weather Unit
- Repeater
- Water Source
- Zone Break
- Controlled access
- Highway or ramp
- Wildfire Fire Perimeter



0 1 2 4 Miles



IMT'S
8/23/2021
22:11:15



DEMOBILIZATION PLAN
MONUMENT INCIDENT
CA-SHF-001187



DEMOB PROCEDURES

- Check the demob list daily. You can find the demob list posted around camp or by utilizing the QR code on your IAP.
- Please report to demob only at your scheduled time.
- Only one person per resource is to report to demob.
- Every effort will be made to provide a remote demob.
- The Demob Unit will provide you with an ICS-221 check-out form.
- For the following units, demob personnel will make radio contact to ensure you are clear for demobilization:
 - Supply Unit
 - Communications Unit
 - Accommodations Unit (If applicable)
- For the following units, you will report in person to complete your check-out:
 - Time Unit
 - Documentation Unit
 - Training Specialist (If applicable)
 - Ground Support Unit
- Return your completed ICS 221 to the Demob Unit and you will be advised of your status (released home, reassigned, etc.)

Greg Barnhart
Demobilization Unit Leader
CAL FIRE Incident Management Team 5

FIRING OPERATION CHECKLIST

Location: _____

Date: _____ Time: _____

Firing Supervisor _____

1. Personnel Briefing

- Objectives
- Conditions (fire environment)
- Resource assignments identified
 - Firing personnel
 - Holding forces
 - Lookouts
- Ignition plan/sequence
- Communication Plan
- Contingency Plan
- Safety issues

2. Go / No-Go

- All personnel briefed
- Weather forecast reviewed
- Resources in place
- Lookouts posted as needed
- Anchor and termination firing points identified
- Communications systems in place
- Fire behavior forecast reviewed
- Escape routes and safety zones established and made known
- Adjoining forces/Air Attack notified

3. Approval Prior To Firing

- Division Supervisor
- Branch Director
- Operations

4. Other Notifications

- Other: _____
- Other: _____

Attach Firing Operations Checklist to ICS-214

Rev 2.8.2011

UNIT LOG (ICS 214)

1. Incident Name:
Monument Fire
South Zone

2. Operational Period: Date From: 8/27/21 Date To: 8/28/21
Time From: 0700 Time To: 0700

3. Unit Name/Designators

4. Unit Leader (Name and ICS Position)

5. Personnel Assigned/Designators

NAME	ICS POSITION	HOME BASE

6. Activity Log (Continue on Reverse)

TIME	MAJOR EVENTS

7. Prepared By: _____ **Date/Time:** _____