

INCIDENT ACTION PLAN MONUMENT FIRE SOUTH ZONE INCIDENT

CA-SHF-001187

Sunday



OPERATIONAL PERIOD



North Zone

8/29/2021 0700


to

8/30/2021 0700



South Zone

ORGANIZATION ASSIGNMENT LIST (ICS 203)

1. Incident Name: Monument Fire South Zone		2. Operational Period: Date From: 8/29/2021 Time From: 0700		Date To: 8/30/2021 Time To: 0700	
3. Incident Commander(s) and Command Staff:			7. Operation Section:		
IC/UC's	Mike Parkes / Chris Trindade (T)	Operations	Andy Turner		
Deputy	Todd Hopkins	Deputy Operations	Jim Hudson		
Safety Officer	Jack Piccinini / Tim Irwin	Night Ops	Steven Ward		
Information Officer	Scott McLean / K. Haskett (T)	Staging Area			
Liaison Officer	M. Urquides / J. Davis	Branch	20	R. Reynolds	
4. Agency/Organization Representatives:		Division/Group	DD / HH	Ryan Pack / Darrell Johnson (T)	
Agency/Organization	Name	Division/Group			
Cal Fire SHU	Dan Dennett	Division/Group			
Trinity Sheriffs Office	Bryan Ward	Division/Group			
CHP	Brandon Lale	Division/Group			
SPI	Herb Baldwin	Branch	30	Mark League / Jeff Loveless (T)	
PG&E	David Hotchkiss	Division/Group	NN	John Capen	
CDCR	Byron Connor	Division/Group	RR	Clint Swensen	
CCC	Jose Murillo	Division/Group			
Wildfire Def. System	Ross Fillmore	Division/Group			
OES	Mark Courson / Pat Titus	Division/Group			
CNA	Mason Chinowith	Branch	Contingency	Bryan Farrell 12HR	
DOT / DIST. 1	Tom Fitzgerald	Division/Group	South Cont 1	Levi Randolph 12HR	
DOT / DIST. 2	Eric Akana	Division/Group	South Cont 2	Mike Watner 12HR	
		Division/Group	MRB	Niko Matteoli / J. McCormick (T)	
		Division/Group			
		Division/Group			
		Branch			
		Staging Area	Hayfork	Brandyn Labrue 12HR	
5. Planning Section:		Division/Group			
Chief	Ryan Davis / David Wood (T)	Division/Group			
Deputy	Sean Griffis	Division/Group			
Resource Unit	K. O'Neil / R. Roland (T)	Division/Group			
Situation Unit	P. Selegue / J. Day / M. Scheeline (T)	Branch			
Documentation Unit		Division/Group			
Demobilization Unit	Greg Barnhart	Division/Group			
GISS	Matt Turner	Division/Group			
FBAN	Troy Velin	Division/Group			
IMET	Royce Fontenot	Division/Group			
Training Tech Spec	Morgan Madruga	Air Operations Branch		Director:	Niko Matteoli
Hired Equipment Tech Spec.	Danial Hu / Brian Bowman	Air Support Group Supervisor		Josh Faulkner	
Crew Tech Spec.		Air Tactical Group Supervisor			
6. Logistics Section		Helibase Manager		David Lindsay	
Chief	Tim Fitzgerald				
Supply Unit	Mike Worford	8. Finance/Administration Section:			
Facilities Unit	Heather Thurston / Josh Randol (T)	Chief	Tiffany Tracy		
Ground Support Unit	Steve Langston / Matt Bellows	Time Unit	Matt Rea / Heather Constable (T)		
Communications Unit	Chris Johns	Procurement Unit	Tammy Nolan		
Medical Unit	Josh Staley	Comp/Claims Unit	Bud Sullins		
Motel Unit	Angel Hendrie	Cost Unit	Mike Kennefic		
Food Unit	Steve Chapin				
Prepared By: Name:	David Wood	Position/Title:	PSC	Signature: 	
ICS 203		Date/Time:	8/28/2021 2300 hours	<small>NIMS IAP</small>	



Monument South Zone Fire Weather Forecast



FORECAST NO: 11
PREDICTION FOR: Sun 0700 to Mon 0700
SHIFT DATE: August 29, 2021
FORECAST ISSUED: 2000 PDT August 28, 2021

NAME OF FIRE: Monument Fire
UNIT: SHF
SIGNED: *Royce Fontenot*
 Incident Meteorologist

WEATHER DISCUSSION: Temperatures will start a gradual cooling trend today with highs in the lower 90s and humidity values falling into the low teens. Temperatures and low humidity values will be moderated somewhat in areas of dense smoke. Winds will start the day generally from the east and will shift to a westerly flow with gusty winds expected late in the afternoon through 0300. Terrain driven winds may be locally enhanced in areas with partial clearing and during the afternoon westerly wind shift. Humidity values will begin a slow recovery shortly after sunset in lower elevations and after midnight along ridgetops.

SUNDAY:

WEATHER: Smoke with areas of partial clearing in the afternoon.
MAX TEMPERATURES: 86-94°F full sunshine, 80-84°F elsewhere under smoke.
MIN HUMIDITY: 11-26%, highest values where heavy smoke lingers.
20 FT WINDS: Ridges: ESE-ENE 2-4 mph becoming WNW 5-7 mph with gusts 10 mph by 1100. Winds increasing 12-15 mph gusts 20-25 mph by 1500. Strongest winds after 1700.
Drainages: Light winds in the morning. Branch 20: Becoming W/Up canyon 5-8 mph gusts 12 mph by 1500. Strongest winds in the Trinity River valley.
Branch 30: Becoming W/Up canyon 4-6 mph gusts 10 mph by 1300. Winds increasing 7-10 mph gusts 13 mph by 1600. Strongest winds in gaps.
LAL: 1
CWR: 0%
HAINES INDEX: 4
MIXING HEIGHT: 1,000 ft AGL increasing to 9,500 ft AGL in the afternoon.
TRANSPORT WIND: WSW 5-10 mph.

SUNDAY NIGHT:

WEATHER: Smoke, dense at times with low visibility.
MIN TEMPERATURES: 52-61°F warmest in thermal belts above 1000 feet.
MAX HUMIDITY: Valley 60-70%. Ridges 30-40%
20 FT WINDS: Ridges: W-NW 10-13 mph with gusts 20 mph becoming 7-9 mph gusts 15 mph by 0300.
Drainages: W/Up Canyon winds 7-10 mph with gusts 12 mph through 2100. Becoming 3-5 mph by 0300
LAL: 1
CWR: 0%
HAINES INDEX: 2
MIXING HEIGHT: 9,000 ft AGL decreasing to 1,000 ft AGL overnight.
TRANSPORT WIND: WSW 10-15 mph.

Monday/Tuesday Outlook: Winds will begin to shift more southwesterly aloft, allowing for a slow clearing trend. Temperatures are expected to continue to cool Monday into Tuesday. Humidity values will fall into the mid-teens with moderate recoveries through Tuesday.

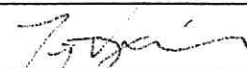
RAWS Observations



Submit Observation



FIRE BEHAVIOR FORECAST

FORECAST NUMBER: 12	TYPE OF FIRE: Wildland Fire
FIRE NAME: Monument	OPERATIONAL PERIOD: 24hr 08-29-2021
DATE ISSUED: 08-28-2021	TIME ISSUED: 2100
UNIT: SHU	SIGNED:  Troy Velin - FBAN

INPUTS

WEATHER SUMMARY

Continued Hot and Dry
See Incident Weather Forecast in IAP

FIRE BEHAVIOR:

GENERAL: **Fuels and Fire Behavior Advisory issued 07-17-2021**

Topography is steep and rugged ranging from 2000' in the valleys and 6000' on higher peaks. Slope in many instances is 100%. This terrain promotes fire growth through roll out and slope reversal. Many of the drainages align with predominant wind patterns for the region. The Trinity River corridor is a major drainage that funnels wind primarily East and West. There are major bends in the river that will create eddy's and swirling winds.

Fuels in the fire area range from timber and timber understory in higher elevations, heavy brush in mid elevations and grass oak woodland in valley bottoms. Extreme Drought this year has stressed fuels to critical fuel moistures. 1000 hr fuels recorded July 15 were 7%, LFM in brush was 93%. The dryness of the fuels in the area are a major contributor to the Monument Fire's growth.

Fires in this area commonly have large growth periods of 1 to 2 days usually aided by windy conditions. Following the large growth periods there are usually several days of slowed growth due to heavy smoke inversions. This has been the scenario for the Monument Fire. August is generally hot and dry with long burn periods that extend well into the night.

SPECIFIC:

Branch 20

Smoldering fire interior of the line. Monitor for roll out.

Branch 30

DIV NN – Minimal fire behavior under smoke inversion. Monitor Little Barker Creek for fire in the bottom to move up through the drainage with normal upslope winds. Fuels are light within the drainage, but movement is still possible.

DIV RR – Fire in the Littler Creek Drainage is low intensity understory burning. Rollout and slope reversal will be the primary mechanism of growth. Backing fire flame lengths in this fuel is between 2'-4'. Winds will remain calm but consistently out of the Northwest during the day. PIG will range from 60-80% depending on smoke shading.

South Zone Contingency

Be cautious operating equipment in critically dry fuels.

AIR OPERATION:

Smoke is expected to be over the fire area all day today.

SAFETY

Fire is king of the mountain. When not driven by strong winds it will return to doing what it does best – making it to the top of ridges and other higher terrain. Post lookouts and monitor for changing weather conditions.

Fuels and Fire Behavior Advisory

Northern California

July 17, 2021



Subject: Potential for extreme fire behavior due to critically low live and dead fuel moistures, very dry conditions resulting from persistent drought, minimal snowpack and spring precipitation, and elevated fire danger rating values across much of northern California.

Discussion: Fires burning in northern California are exhibiting extreme fire growth based on critical fuel conditions. Fire spread is fuel driven and does not depend on wind to spread. Surface fuels are very receptive to embers. Long range spotting, area ignition, and group torching is occurring on large fires frequently.

Difference from normal conditions: Northern California is in a drought; currently with 90% at Extreme to Exceptional levels. The drought is expected to persist or intensify throughout the fire season. Deficient rainfall and snowpack with early melt off has resulted in fuels that are 4-6 weeks ahead of normal drying/curing rates.

Concerns to Firefighters and the Public:

- Energy Release Component (ERC) at numerous weather stations set record maximums already this year and are running at or above the 97th percentile in most cases. Expect increased fire intensity and spread rates in these areas. Early season extreme fire behavior has been observed in both light and heavy fuels. **Anticipate increased spread rates, spotting, and active nighttime burning.**
- The combination of persistent drought and record-low rainfall and snowpack amounts has led to very low live and dead fuel moistures. Low 1000-hour fuel moistures have been evidenced by complete consumption of dead fuels on recent fires. Live fuel moistures in grasses, shrubs and trees, have already reached critical levels in many areas of Northern California due to limited green-up this spring. **Expect fires to ignite easier and spread faster. Do not expect fires to exhibit reduced fire behavior when entering areas of live fuels; anticipate increased spread rates and spotting.**
- Direct attack is often not feasible under regular diurnal wind conditions with ground resources. And aviation utilization is often insufficient in moderating rate of spread without immediate heavy ground resource response. **Anticipate higher resistance to control in all fuel types.**
- Already this year, Northern California has experienced large fire activity and multiple team deployments. California will likely experience an extended fire season. It is important to be mindful of and manage fatigue for all resources. **Everyone, every day, returns home safely.**

Mitigation Measures:

- Local and inbound fire personnel need to be aware that fire behavior across the state is exceeding normal expectations for this time of the year. **Local briefings need to be thorough and highlight specific fire environment conditions. These include but are not limited to local weather forecasts, Pocket Cards, ERC's, live and dead fuel moistures.**
- Suppression actions need to be based on good anchor points, escape routes, and safety zones. **Remember LCES. Experienced lookouts are essential under these conditions.**
- Base all actions on current and expected behavior of the fire. **Augment initial attack resources as incident activity dictates.**

Area of Concern: Northern California except for the following Predictive Service Areas: North Coast and Bay Marine, west of Highway 101 in Mid-Coast to Mendocino and Diablo-Santa Cruz, and the north eastern portion of Far Eastside.



Monument Fire South Zone
HEALTH AND SAFETY MESSAGE



INCIDENT: Monument – CA SHF-001187 **DATE:** August 29, 2021 **TIME:** 0700-0700

24 HOUR SAFETY EMPHASIS
WEATHER – DRIVING - COMMUNICATIONS

Weather/Environmental Conditions

Watch Out

- Wind Increases and changing of direction causing erratic fire behavior
- Cap Lifting, bringing hotter weather to ground levels of all divisions
- With some reduced fire activity on divisions, wildlife is repopulating the area.

Mitigation

- Post lookouts in areas of concern - drainages, creek beds, open fire line
- Proper hydration throughout the day will help eliminate heat related injuries
- Be aware of wild animals within your area, communicate to your crews and divisions any hazardous wildlife – Bears, Mountain Lions etc.

Driving and Transportation

Watch Out

- Road networks within the divisions may be single lane making passing difficult
- Distracted and Impaired driving could result in a vehicle accident
- Unsafe vehicle operation can lead to accidents

Mitigation

- Stay with established traffic plans, use traffic controllers if possible, mark hazards
- Pull over if fatigued, utilize relief drivers, drive responsibly and defensibly
- Slow down, maintain a safe distance, turn on lights, allow for extra travel time

Communications

Watch Out

- Crews being uninformed on strategies, tactics and hazards
- Surge forces not being on proper tactical channel leads to confusion and missed directions
- Radio communications on some branches may not be ideal, causing for dropped transmissions

Mitigation

- Ensure all incoming crews (day and night) receive a tailgate briefing
- Be familiar with the incident radio plan, make appropriate changes to your radios with movement
- Utilize human repeaters and relays if necessary.

Each Safety Message is designed for a daily Tailgate Safety discussion

REMAIN FIRE FOCUSED AND COVID-19 AWARE


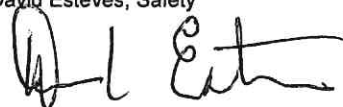
Dave Esteves

IMT 5 SAFETY OFFICER



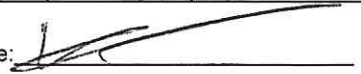
Monument South Zone RISK ANALYSIS (ICS 215a)



DIV	HAZARDOUS ACTIONS/CONDITIONS	MITIGATIONS / WARNINGS / REMEDIES
ALL	FATIGUE/DEHYDRATION	<p>Be alert for signs of fatigue and take breaks as necessary. Monitor incoming resources for level of fatigue. Drink water before, during and after shifts, up to 1.5 gal. per shift. Be alert for signs of heat stress in yourself and others; use the buddy system. Eat small meals often and when possible. Find shade when you can. Drink electrolyte drinks at a 2 water to 1 sport drink ratio.</p>
ALL	HAZARD TREES/TREE FELLING SAFETY	<p>Look up, look down, look around when entering timber. Identify and isolate the area to provide for the safety of others. Flag and make proper notifications. Do not leave incomplete falling operations. Monitor when mopping up. Watch where you park. Size up and mitigate concerns, work within your qualifications.</p>
ALL	COMPLACENCY	<p>Don't underestimate the task at hand. Wear full PPE while on the line. Everyone should be briefed on the conditions and circumstances regarding the fire and their assignments per the IRPG. Today is different than last shift, even if in the same area.</p>
ALL	INCREASING FIRE BEHAVIOR	<p>Know your LCES and maintain Situational Awareness. Use experienced Lookouts. Monitor weather for changes in the wind, temp, and RH during the shift. Have a contingency plan with established decision points and safety zones.</p>
ICP Ground Support	GENERAL TRAFFIC	<p>Watch out for pedestrian and vehicle congestion. Provide spotters when backing or driving in tight places. Adhere to the 5 mph speed limit while in base camp.</p>
ALL	AIRCRAFT OPERATIONS	<p>Monitor air-to-ground frequency, they are your eyes in the sky. Use air-to-ground frequency to communicate with aircraft. Use clear, concise statements when directing aircraft. Clear the area for incoming water and retardant drops.</p>
ALL	HEAVY EQUIPMENT	<p>Watch for rolling material avoid working below heavy equipment. Monitor safe working distances provide adequate working space. Utilize communication with the operators, stop if poor visibility (radio or hand signals).</p>
ALL	WEATHER CHANGES	<p>Monitor for increased temperatures on the fireline. Expect erratic winds. Communicate weather changes on the fireline as winds shifts are expected over the next few days</p>
ALL	DRIVING HAZARDS	<p>Complete appropriate DOT daily vehicle inspection. Slow Down! Long travel times to the line, stay alert. Stop if fatigued. Drive defensively and responsibly, not distracted or impaired. Drive with headlights and seatbelts on. Narrow roads with limited passing room. Expect roads to deteriorate over the shift.</p>
ALL	COMMUNICATIONS	<p>Confirm correct tactical and command channel. No unassigned radio channels. Check your Air to Ground to make sure it is correct for your branch. Check your command and tactical frequencies if you have moved branches or divisions. Ensure correct communication with neighboring federal zones.</p>
ALL	COVID 19	<p>Wear a mask when applicable. Utilize hand sanitizer and wash hands frequently. Maintain social distancing. Disinfect apparatus and coolers frequently; Adhere to local, state and federal Covid-19 guidelines. Advise supervisor if you feel sick.</p>
ALL	ENVIRONMENTAL HAZARDS	<p>Maintain situational awareness for illegal activity and hunters. Wash poison oak off hands and clothes. Harvest time in certain areas of the fire. Increase your situational awareness.</p>
Jim Hudson Operations Section Chief 		David Esteves, Safety 
		DATE PREPARED: August 28, 2021 Operational Period August 29, 0700-0700

ASSIGNMENT LIST (ICS 204 WF)

CONTROLLED UNCLASSIFIED
INFORMATION//BASIC

1. Incident Name: Monument Fire South Zone		2. Operational Period: Date From: 08/29/21 Date To: 08/30/21 Time From: 0700 Time To: 0700				3. Branch 20		Division DD / HH	
4. Operations Personnel:						Page 1 of 2		Delta-Delta	
Operations Section Chief: Andy Turner					Night Ops: Steven Ward				
Branch Director: R. Reynolds					Branch Safety:				
Division/Group Supervisor: Ryan Pack / Darrell Johnson (T)					Air Attack:				
5. Resources Assigned:		** Resources Below in Bold are 12 Hour **							
Resource Identifier	ALS	LWD	Leader	Personnel	Request #	Hours	Reporting Location		
STF						0700-0700	HWY 3 X 299		
T/F XAL 2020			KENT CARLEN	16	E-10224	0700-0700	HWY 3 X 299		
ENG PVT E-10527 INBOUND			JORDAN TIBBALS	3	E-10527	0700-1900	HWY 3 X 299		
ENG PVT E-10531 E320			CHRIS RAMSEY	3	E-10531	0700-1900	HWY 3 X 299		
ENG NV SND 5342			ALEX FONSECA	4	E-10535	0700-1900	HWY 3 X 299		
ENG PVT E-10551 RTW65			MICHAEL RICHARDS	3	E-10551	0700-1900	HWY 3 X 299		
ENG PVT E-10553 SCHOLL			AJ COOLGLE	3	E-10553	0700-1900	HWY 3 X 299		
STG TGU 9254G			JASON LONG	32	C-10014	0700-0700	HWY 3 X 299		
DOZ SHU 2440			AARON FLOURNOY	4	E-10204	0700-0700	HWY 3 X 299		
DOZ PVT E-10100 SIERRAVILLE			CHASE HAUBER	3	E-10100	0700-0700	HWY 3 X 299		
DOZ PVT E-10106 K5 RANCH			JAMES KLAUER	2	E-10106	0700-0700	HWY 3 X 299		
DOZ PVT E-10259 DIRECT			KEVIN FOX	2	E-10259	0700-0700	HWY 3 X 299		
DOZ PVT 73 SHASTA			ROB STRIEFF	1	E-10305	0700-1900	HWY 3 X 299		
DOZ PVT E-10439 SCHREDER			CORY HALL	4	E-10439	0700-0700	HWY 3 X 299		
W/T PVT E-10115 GRISWOLD			GARY GRISWOLD	2	E-10115	0700-0700	HWY 3 X 299		
W/T PVT E-10119 CLASS 1			DARRIN ENOCH	2	E-10119	0700-0700	HWY 3 X 299		
W/T PVT E-10123 CNH			JAMES CALDWELL	1	E-10123	0700-1900	HWY 3 X 299		
W/T PVT E-10132 GREER			IRA GREER	2	E-10132	0700-0700	HWY 3 X 299		
6. Work Assignments: Mop up 300ft from control lines. Fall hazard trees that threaten control lines. Hold fire within planned control lines. Backhaul all trash.									
7. Special Instructions: For emergency fueling please work with your division to contact monument fueling on command. REAF Cynthia Armentrout and REAF Dillon Sheedy will be working in this Division									
8. Communications									
Name	Ch	Function	Rx Freq	Rx Tone	Tx Freq	Tx Tone	Notes		
CDF C2	1	COMMAND	151.2650	103.5 (T8)	159.3300	151.4 (T14)			
VFIRE 23	4	TACTICAL	154.2950N	156.7 (T6)	154.2950N	156.7 (T6)			
CDF T25	14	AIR TO GROUND	159.2775	192.8 (T16)	159.2775	192.8 (T16)	A/G TACTICAL		
CALCORD	15	MEDICAL	156.0750N	156.7 (T6)	156.0750N	156.7 (T6)	MEDICAL COORDINATION		
GUARD 26	16	AIRGUARD	168.6250N		168.6250N	110.9 (T1)	EMERGENCY USE ONLY		
9. Prepared by: Name:		Kyle O'Niel			RESL		Signature: 		
ICS 204		Date/Time: 8/28/2021 2200			Personnel Count: 87				

NIMS IAP

CONTROLLED UNCLASSIFIED INFORMATION//BASIC

ASSIGNMENT LIST (ICS 204 WF)

CONTROLLED UNCLASSIFIED
INFORMATION/BASIC

1. Incident Name: Monument Fire South Zone	2. Operational Period: Date From: 08/29/21 Date To: 08/30/21 Time From: 0700 Time To: 0700	3. Branch Division 30 NN
---	---	---

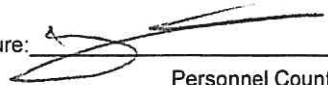
4. Operations Personnel:		Page 1 of 2 November-November
Operations Section Chief: Andy Turner		Night Ops: Steven Ward
Branch Director: Mark League / Jeff Loveless (T)		Branch Safety:
Division/Group Supervisor: John Capen		Air Attack:

5. Resources Assigned:	** Resources Below in Bold are 12 Hour **						
Resource Identifier	ALS	LWD	Leader	Personnel	Request #	Hours	Reporting Location
STC HUU 9121C			DRIGGS, IVAN	16	E-10180	0700-0700	BARKER CRK X HWY 3
STC OES 6808C			STEVE KEAN	19	E-10250	0700-0700	BARKER CRK X HWY 3
STC AEU 9270C			CHRIS PLACKE	17	E-10077	0700-0700	BARKER CRK X HWY 3
STC						0700-0700	BARKER CRK X HWY 3
STC						0700-0700	BARKER CRK X HWY 3
T/F EMAC WASH 2			NICH SACHA	17	E-10344	0700-1900	BARKER CRK X HWY 3
ENG MDC 1			STEVE FINNERY	3	E-10376	0700-1900	BARKER CRK X HWY 3
ENG LEC ROCKY MTN 1			VICTOR MADPLUME	3	E-10389	0700-1900	BARKER CRK X HWY 3
ENG-OR-IFC			CASEY BROWN	3	E-10392	0700-1900	BARKER CRK X HWY 3
ENG PVT GCT 80			KEN DELYRIA	3	E-10506	0700-1900	BARKER CRK X HWY 3
ENG BIA 441			DERRICK TINNO	3	E-10508	0700-1900	BARKER CRK X HWY 3
ENG PVT E-10525 ALLIED			JOHN KNIGHT	3	E-10525	0700-1900	BARKER CRK X HWY 3
ENG PVT E-10532 SMOKEHOUND			CORY GRAHAM	3	E-10532	0700-1900	BARKER CRK X HWY 3
ENG PVT E-10550 E6			ROBERT MCGIRR	3	E-10550	0700-1900	BARKER CRK X HWY 3
ENG FIF 612			RHETT BAILEY	5	E-10554	0700-1900	BARKER CRK X HWY 3
ENG CLC BR37			BRAD BOLTON	4	E-10559	0700-0700	BARKER CRK X HWY 3
STG LNU 9146G			SEAN CASSATT	28	C-10013	0700-0700	BARKER CRK X HWY 3
STG BDU 9351G			JOSEPH HATCH	32	C-10004	0700-0700	BARKER CRK X HWY 3

6. Work Assignments:
 Construct contingency line from Maxwell Creek to Hyampom Road.
 Mop up 100'. Cut and improve line where needed.
 Perform Tactical Patrol around structures.
 Backhaul all trash.

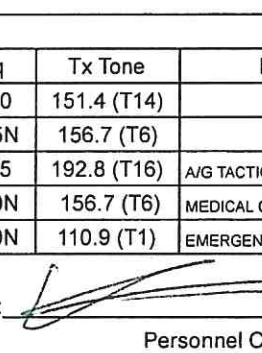
7. Special Instructions:
 For emergency fueling please work with your division to contact monument fueling on command.
 REAF Cynthia Armentrout and REAF Dillon Sheedy will be working in this Division

8. Communications							
Name	Ch	Function	Rx Freq	Rx Tone	Tx Freq	Tx Tone	Notes
CDF C2	1	COMMAND	151.2650	103.5 (T8)	159.3300	151.4 (T14)	
VFIRE 24	5	TACTICAL	154.2725N	156.7 (T6)	154.2725N	156.7 (T6)	
CDF T25	14	AIR TO GROUND	159.2775	192.8 (T16)	159.2775	192.8 (T16)	A/G TACTICAL
CALCORD	15	MEDICAL	156.0750N	156.7 (T6)	156.0750N	156.7 (T6)	MEDICAL COORDINATION
GUARD 26	16	AIRGUARD	168.6250N		168.6250N	110.9 (T1)	EMERGENCY USE ONLY

9. Prepared by: Name: Kyle O'Niel RESL
 Signature: 
 ICS 204 Date/Time: 8/28/2021 2200 Personnel Count: 162

ASSIGNMENT LIST (ICS 204 WF)

CONTROLLED UNCLASSIFIED
INFORMATION//BASIC

1. Incident Name: Monument Fire South Zone		2. Operational Period: Date From: 08/29/21 Date To: 08/30/21 Time From: 0700 Time To: 0700				3. Branch 30		Division NN	
4. Operations Personnel:						Page 2 of 2 November-November			
Operations Section Chief: Andy Turner					Night Ops: Steven Ward				
Branch Director: Mark League / Jeff Loveless (T)					Branch Safety:				
Division/Group Supervisor: John Capen					Air Attack:				
5. Resources Assigned:		** Resources Below in Bold are 12 Hour **							
Resource Identifier	ALS	LWD	Leader	Personnel	Request #	Hours	Reporting Location		
W/T PVT E-10114 TRAHAN			ROBERT LATHAM	1	E-10114	0700-1900	BARKER CRK X HWY 3		
W/T PVT E-10117 MCGARR			DENNIS MCGARR	1	E-10117	0700-1900	BARKER CRK X HWY 3		
W/T PVT E-10125 JOHNSON			KEN JOHNSON	2	E-10125	0700-0700	BARKER CRK X HWY 3		
W/T PVT E-10127 CLOVIS			GEORGE MCDONOUGH	1	E-10127	0700-1900	BARKER CRK X HWY 3		
W/T PVT E-10201 WELLS			JEFF WELLS	1	E-10201	0700-0700	BARKER CRK X HWY 3		
W/T PVT E-10450 AMERICAN			VINCENT REALI	2	E-10450	0700-0700	BARKER CRK X HWY 3		
EXC						0700-0700	BARKER CRK X HWY 3		
HEQB						0700-0700	BARKER CRK X HWY 3		
HEQB						0700-0700	BARKER CRK X HWY 3		
FALM PVT CTS VENTURES				2	O-10358	0700-1900	BARKER CRK X HWY 3		
FALM PVT HUGHES				2	O-10359	0700-1900	BARKER CRK X HWY 3		
REMS 1 MONRONGO			BEN KRONE	4	O-10033.1	0700-0700	BARKER CRK X HWY 3		
SOFR CRADOCK			DAVID CRADOCK	1	O-10393	0700-0700	BARKER CRK X HWY 3		
SOFR WILLIAMS						0700-0700	BARKER CRK X HWY 3		
6. Work Assignments:									
Construct contingency line from Maxwell Creek to Hyampom Road.									
Mop up 100'. Cut and improve line where needed.									
Perform Tactical Patrol around structures.									
Backhaul all trash.									
7. Special Instructions:									
For emergency fueling please work with your division to contact monument fueling on command.									
REAF Cynthia Armentrout and REAF Dillon Sheedy will be working in this Division									
8. Communications									
Name	Ch	Function	Rx Freq	Rx Tone	Tx Freq	Tx Tone	Notes		
CDF C2	1	COMMAND	151.2650	103.5 (T8)	159.3300	151.4 (T14)			
VFIRE 24	5	TACTICAL	154.2725N	156.7 (T6)	154.2725N	156.7 (T6)			
CDF T25	14	AIR TO GROUND	159.2775	192.8 (T16)	159.2775	192.8 (T16)	A/G TACTICAL		
CALCORD	15	MEDICAL	156.0750N	156.7 (T6)	156.0750N	156.7 (T6)	MEDICAL COORDINATION		
GUARD 26	16	AIRGUARD	168.6250N		168.6250N	110.9 (T1)	EMERGENCY USE ONLY		
9. Prepared by: Name:		Kyle O'Niel			RESL				
Signature:									
ICS 204		Date/Time: 8/28/2021			2200		Personnel Count: 17		

NIMS IAP

CONTROLLED UNCLASSIFIED INFORMATION//BASIC

ASSIGNMENT LIST (ICS 204 WF)

CONTROLLED UNCLASSIFIED
INFORMATION//BASIC

1. Incident Name: Monument Fire South Zone	2. Operational Period: Date From: 08/29/21 Date To: 08/30/21 Time From: 0700 Time To: 0700	3. Branch Division 30 RR
---	---	---

Page 1 of 4 Romeo-Romeo

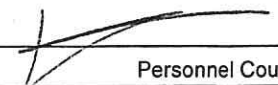
4. Operations Personnel:	
Operations Section Chief: Andy Turner	Night Ops: Steven Ward
Branch Director: Mark League / Jeff Loveless (T)	Branch Safety:
Division/Group Supervisor: Clint Swensen	Air Attack:

5. Resources Assigned:		** Resources Below in Bold are 12 Hour **					
Resource Identifier	ALS	LWD	Leader	Personnel	Request #	Hours	Reporting Location
STA OES 4804A			TAYLOR, JEFF	18	E-10243	0700-0700	CEDAR LANE
STA OES 2800A			CHRIS HARPER	21	E-10353	0700-1900	CEDAR LANE
STA LAC 1135A			EDWARD FOSTER	21	E-10242	0700-0700	CEDAR LANE
STC LNU 9141C			JIM CHRISTISON	17	E-10534	0700-0700	CEDAR LANE
STC SHU 9242C			TIM WHITEHURST	16	E-10183	0700-0700	CEDAR LANE
STC SHU 9246C			GARRET QUIGGLEY	20	E-10181	0700-0700	CEDAR LANE
STC						0700-0700	CEDAR LANE
T/F XLF 1341			JIM UNDERWOOD	17	E-10355	0700-0700	CEDAR LANE
T/F XTR 3286			COLBERT		E-10197	0700-0700	CEDAR LANE
T/F EMAC WASH 1			ALEX HICKLEY	16	E-10343	0700-1900	CEDAR LANE
ENG XTR HYF 3161			LEROY	2	E-10350	0700-0700	CEDAR LANE
ENG PVT NM 805			BRETT BOWER	1	E-10307	0700-1900	CEDAR LANE
ENG PVT B-61			NICK OPAHUANG	3	E-10390	0700-1900	CEDAR LANE
ENG BRS 464			JAMES MARTINEZ	3	E-10507	0700-1900	CEDAR LANE
ENG PVT MTN CAMEL			SHAWN WIPPERT	3	E-10522	0700-1900	CEDAR LANE
ENG PVT ROGUE BASIN			MATTHEW JORDAN	2	E-10526	0700-1900	CEDAR LANE
ENG PVT 8603			MATT SPECHT	3	E-10533	0700-1900	CEDAR LANE
ENG PVT ROCKY PT 324			SETH COLBRY	3	E-10549	0700-1900	CEDAR LANE

6. Work Assignments:
 Construct control lines as direct as possible.
 Improve direct fire line. Mop up 300' in from control line.
 Fall hazard trees and trees that threaten control lines.
 Backhaul all trash.


7. Special Instructions:
 For emergency fueling please work with your Division to contact Mounument fueling on command.
 Roads are becoming soft please stay on the high side of the road.
 REAF Forest Coots and Arch Allison young will be working in Branch 30 Division RR.

8. Communications							
Name	Ch	Function	Rx Freq	Rx Tone	Tx Freq	Tx Tone	Notes
CDF C2	1	COMMAND	151.2650	103.5 (T8)	159.3300	151.4 (T14)	
CDF T26	6	TACTICAL	159.2925N	192.8 (T16)	159.2925N	192.8 (T16)	
CDF T25	14	AIR TO GROUND	159.2775	192.8 (T16)	159.2775	192.8 (T16)	A/G TACTICAL
CALCORD	15	MEDICAL	156.0750N	156.7 (T6)	156.0750N	156.7 (T6)	MEDICAL COORDINATION
GUARD 26	16	AIRGUARD	168.6250N		168.6250N	110.9 (T1)	EMERGENCY USE ONLY

9. Prepared by: Name: Kyle O'Niel RESL
 Signature: 
 ICS 204 Date/Time: 8/28/2021 2200 Personnel Count: 166

ASSIGNMENT LIST (ICS 204 WF)

CONTROLLED UNCLASSIFIED
INFORMATION//BASIC


1. Incident Name: Monument Fire South Zone		2. Operational Period: Date From: 08/29/21 Date To: 08/30/21 Time From: 0700 Time To: 0700		3. Branch 30		Division RR	
4. Operations Personnel:				Page 2 of 4		Romeo-Romeo	
Operations Section Chief: Andy Turner			Night Ops: Steven Ward				
Branch Director: Mark League / Jeff Loveless (T)			Branch Safety:				
Division/Group Supervisor: Clint Swensen			Air Attack:				
5. Resources Assigned:		** Resources Below in Bold are 12 Hour **					
Resource Identifier	ALS	LWD	Leader	Personnel	Request #	Hours	Reporting Location
ENG GBF 69			DAVIS GRASS	3	E-10552	0700-1900	CEDAR LANE
STG LNU 9147G			JOSH LAW	36	C-10012	0700-0700	CEDAR LANE
STG SHU 9240G CNA			MASON CHENOWITH	38	C-10006	0700-0700	CEDAR LANE
CRW LNU DELTA 3			JASE INDREBO	15	C-10010	0700-0700	CEDAR LANE
STG						0700-0700	CEDAR LANE
STG						0700-0700	CEDAR LANE
DOZ NEU 2340			KATY MCMANUS	2	E-10164	0700-0700	CEDAR LANE
DOZ TGU 2540			RED BLUFF	3	E-10546	0700-0700	CEDAR LANE
DOZ MVU 3345			MARTY ADAMS	2	E-10543	0700-0700	CEDAR LANE
DOZ PVT E-10090 T & S			SEBASTIAN MAYNARD	2	E-10090	0700-0700	CEDAR LANE
DOZ PVT E-10092 HERTZIG			DON CALDWELL	2	E-10092	0700-0700	CEDAR LANE
DOZ PVT E-10097 JOHNSON			MATT JOHNSON	2	E-10097	0700-0700	CEDAR LANE
DOZ PVT E-10098 EJ PIOLIT			EDWARD PONTE	2	E-10098	0700-0700	CEDAR LANE
DOZ PVT E-10104 A&CC			CLYTON MOORE	2	E-10104	0700-0700	CEDAR LANE
W/T - HYF 3141			LEROY	2	E-10349	0700-0700	CEDAR LANE
W/T PVT E-10006 BURGESS			DAVID BURGESS	1	E-10006	0700-0700	CEDAR LANE
W/T PVT E-10116 5 STAR			ASA BENNETT	1	E-10116	0700-0700	CEDAR LANE
W/T PVT E-10118 DUNLAP			DAVID POLE	2	E-10118	0700-0700	CEDAR LANE
6. Work Assignments: Construct control lines as direct as possible. Improve direct fire line. Mop up 300' in from control line. Fall hazard trees and trees that threaten control lines. Backhaul all trash.							
7. Special Instructions: For emergency fueling please work with your Division to contact Mounument fueling on command. Roads are becoming soft please stay on the high side of the road. REAF Forest Coots and Arch Allison young will be working in Branch 30 Division RR.							
8. Communications							
Name	Ch	Function	Rx Freq	Rx Tone	Tx Freq	Tx Tone	Notes
CDF C2	1	COMMAND	151.2650	103.5 (T8)	159.3300	151.4 (T14)	
CDF T26	6	TACTICAL	159.2925N	192.8 (T16)	159.2925N	192.8 (T16)	
CDF T25	14	AIR TO GROUND	159.2775	192.8 (T16)	159.2775	192.8 (T16)	A/G TACTICAL
CALCORD	15	MEDICAL	156.0750N	156.7 (T6)	156.0750N	156.7 (T6)	MEDICAL COORDINATION
GUARD 26	16	AIRGUARD	168.6250N		168.6250N	110.9 (T1)	EMERGENCY USE ONLY
9. Prepared by: Name:		Kyle O'Niel		RESL		Signature: 	
ICS 204		Date/Time: 8/28/2021		2200		Personnel Count: 115	

NIMS IAP

CONTROLLED UNCLASSIFIED INFORMATION//BASIC

ASSIGNMENT LIST (ICS 204 WF)

CONTROLLED UNCLASSIFIED
INFORMATION/BASIC


1. Incident Name: Monument Fire South Zone		2. Operational Period: Date From: 08/29/21 Date To: 08/30/21 Time From: 0700 Time To: 0700				3. Branch Division Contingency South Cont 1	
4. Operations Personnel:						Page 1 of 1	
Operations Section Chief: Andy Turner				Night Ops: Steven Ward			
Branch Director: Bryan Farrell 12HR				Branch Safety:			
Division/Group Supervisor: Levi Randolph 12HR				Air Attack:			
5. Resources Assigned:		** Resources Below in Bold are 12 Hour **					
Resource Identifier	ALS	LWD	Leader	Personnel	Request #	Hours	Reporting Location
ENG J3 CONTRACTING			SHAWN MODICA	3	E-10308	0700-1900	ICP
STG						0700-0700	ICP
DOZ PVT E-10093 SGS			ERIC HEFTE	1	E-10093	1900-0700	ICP
DOZ PVT E-10095 MN MILLER			LELLO MARTINEZ	2	E-10095	0700-0700	ICP
DOZ PVT E-10099 MULLER			CHARLES MULLER	2	E-10099	0700-0700	ICP
DOZ PVT E-10107 K5 RANCH			MITCH GILS	2	E-10107	0700-0700	ICP
DOZ PVT E-10108 SAGE			CARMEN, KAEUM	4	E-10108	0700-0700	ICP
DOZ PVT E-10109 PEARSON			JIMMY LUST	2	E-10109	0700-0700	ICP
DOZ PVT E-10110 LEWIS			TYLER LEWIS	2	E-10110	0700-1900	ICP
DOZ PVT E-10261 STRIKE			WES CURL	1	E-10261	0700-1900	ICP
DOZ PVT E-10438 PACKWAY			RICHARD HATHAWAY	3	E-10438	0700-0700	ICP
DOZ PVT E-10440 SUNRISE			JOHN WILLIAMS	2	E-10440	0700-0700	ICP
W/T PVT E-10131 PALMER			STANLEY MIRANDA	1	E-10131	0700-1900	ICP
MAST PVT E-10156 STONE FLY			MICHAEL PURENI	1	E-10156	0700-1900	ICP
MAST PVT E-10157 US FIRE			WILLIAM REDCORN	2	E-10157	0700-1900	ICP
EXC PVT E-10446 TWO BRO'S			STEVE CLARK	1	E-10446	0700-1900	ICP
EXC						0700-0700	ICP
HEQB POBURKO			JASON POBURKO	1		0700-1900	ICP
FALM PVT O-10138 KLEE TREE			JASON KLEE	2	O-10138	0700-1900	ICP
6. Work Assignments: Contract contingency line from Sims Gap to NE quarter of section 33. Fall hazard trees that will threaten control lines. Fall hazard trees.							
7. Special Instructions: REAF Andrew Christie and REAF Rudy Uribe will be working in this Division							
8. Communications							
Name	Ch	Function	Rx Freq	Rx Tone	Tx Freq	Tx Tone	Notes
CDF C2	1	COMMAND	151.2650	103.5 (T8)	159.3300	151.4 (T14)	
CDF T27	7	TACTICAL	159.3075N	192.8 (T16)	159.3075N	192.8 (T16)	
CDF T25	14	AIR TO GROUND	159.2775	192.8 (T16)	159.2775	192.8 (T16)	A/G TACTICAL
CALCORD	15	MEDICAL	156.0750N	156.7 (T6)	156.0750N	156.7 (T6)	MEDICAL COORDINATION
GUARD 26	16	AIRGUARD	168.6250N		168.6250N	110.9 (T1)	EMERGENCY USE ONLY
9. Prepared by: Name:		Kyle O'Niel		RESL		Signature: 	
ICS 204		Date/Time: 8/28/2021		2200		Personnel Count: 32	

NIMS IAP

CONTROLLED UNCLASSIFIED INFORMATION/BASIC

ASSIGNMENT LIST (ICS 204 WF)

CONTROLLED UNCLASSIFIED
INFORMATION//BASIC

1. Incident Name: Monument Fire South Zone		2. Operational Period: Date From: 08/29/21 Date To: 08/30/21 Time From: 0700 Time To: 0700				3. Branch Division Contingency South Cont 2	
4. Operations Personnel:		Page 1 of 2					
Operations Section Chief: Andy Turner			Night Ops: Steven Ward				
Branch Director: Bryan Farrell 12HR			Branch Safety:				
Division/Group Supervisor: Mike Watner 12HR			Air Attack:				
5. Resources Assigned:		** Resources Below in Bold are 12 Hour **					
Resource Identifier	ALS	LWD	Leader	Personnel	Request #	Hours	Reporting Location
DOZ MEU 1145			MATT WILSON	4	E-10548	0700-0700	DP 44
DOZ PVT E-10094 MARSH			DAN MARSH	4	E-10094	0700-0700	DP 44
DOZ PVT E-10101 MORRIS			MATTHEW CRIPPEN	1	E-10101	1900-0700	DP 44
DOZ PVT E-10102 CHUCK FRY			CHUCK FRY	2	E-10102	0700-0700	DP 44
DOZ PVT E-10103 MEEKER			JONATHAN MEEKER	2	E-10103	0700-0700	DP 44
DOZ PVT E-10105 PHELAN			JAROD WELLS	1	E-10105	1900-0700	DP 44
DOZ PVT E-10111 HERMAN			LARRY HERMAN	3	E-10111	0700-0700	DP 44
DOZ PVT E-10112 DAVIS			LELAND DAVIS	1	E-10112	0700-1900	DP 44
DOZ PVT E-10113 GOLTERMAN			CASEY GOLTERMANN	3	E-10113	0700-0700	DP 44
DOZ PVT E-10174 COTTON			MIKE STAHEL	2	E-10174	0700-0700	DP 44
DOZ PVT E-10260 STRIKE			MARCK CHAVEZ	2	E-10260	0700-0700	DP 44
W/T PVT E-10005 JOHNSON			DAVE LAMAR	1	E-10005	0700-1900	DP 44
W/T PVT E-10289 Act Fast			ANGELO CATTANEO	1	E-10289	0700-1900	DP 44
MAST PVT E-10162 RUBINI			DOMINIC RUBINI	1	E-10162	0700-1900	DP 44
MAST PVT E-10356 RJW			WADE FIELDS	1	E-10356	0700-1900	DP 44
MAST PVT E-10366 H2AO LLC			HAYDEN OILAR	1	E-10366	0700-1900	DP 44
MAST PVT E-10454 INGRAM			MARK ESCALERA	2	E-10454	0700-1900	DP 44
EXC PVT E10484 WALBERG			BRIAN BELOIT	1	E-10484	0700-1900	DP 44
6. Work Assignments: Construct contingency line. Plan secondary control lines, begin if possible. Fall hazard trees. Construct safety islands.							
7. Special Instructions: REAF Andrew Christie and REAF Rudy Uribe will be working in this Division							
8. Communications							
Name	Ch	Function	Rx Freq	Rx Tone	Tx Freq	Tx Tone	Notes
CDF C2	1	COMMAND	151.2650	103.5 (T8)	159.3300	151.4 (T14)	
CDF T28	8	TACTICAL	151.1825	192.8 (T16)	151.1825	192.8 (T16)	
CDF T25	14	AIR TO GROUND	159.2775	192.8 (T16)	159.2775	192.8 (T16)	A/G TACTICAL
CALCORD	15	MEDICAL	156.0750N	156.7 (T6)	156.0750N	156.7 (T6)	MEDICAL COORDINATION
GUARD 26	16	AIRGUARD	168.6250N		168.6250N	110.9 (T1)	EMERGENCY USE ONLY
9. Prepared by: Name:		Kyle O'Neil		RESL		Signature: 	
ICS 204		Date/Time: 8/28/2021		2200		Personnel Count: 33	

NIMS IAP

CONTROLLED UNCLASSIFIED INFORMATION//BASIC

Division/Group Assignment List (ICS 204 WF)

Controlled Unclassified Information//Basic

1. Incident Name:				3.		
MONUMENT NORTH				Branch:		Division/Group
2. Operational Period: 24 HR				10		U
Date/Time From: 08/29/2021 0700 SUN		Date/Time To: 08/30/2021 0700 MON				
4. Operations Personnel						
BRANCH DIRECTOR		CLINTON NORTHWAY (8/30)		FIELD OPERATIONS		JON GLOVER (8/30)
DIVISION/GROUP SUPERVISOR		JAMIE MAYOR (8/30) JACOB BAILEY (T) (8/30)		PLANNING OPERATIONS		KAREN SCHOLL (8/30) RANDY FOLAND (T) (8/30)
5. Resources Assigned this Period						
Strike Team / Task Force / Resource Designator		LWD	Leader	Number Persons	Drop Off PT./Time	Pick Up PT./Time
C-118 HC1 LEWIS & CLARK IHC		09/09	NICK WYDRE	21	WEAVERVILLE/0700	WEAVERVILLE/1900
C-5 HC2I FIRESTORM 15A		09/04	BEN PAVAN	20	WEAVERVILLE/0700	WEAVERVILLE/1900
C-99 HC2 R & R CONTRACTING		09/05	ASUCENA AGUILERA	20	WEAVERVILLE/0700	WEAVERVILLE/1900
O-418.112 TFLD		08/31	ANDRES OROZCO	1	WEAVERVILLE/0700	WEAVERVILLE/1900
O-86 FMOD REDWOOD EMPIRE		09/01	JESSE GONZALES	1	WEAVERVILLE/0700	WEAVERVILLE/1900
O-603 TFLD		08/30	BRENTWOOD REID	1	WEAVERVILLE/0700	WEAVERVILLE/1900
E-44 ENG3 JUNCTION CITY 2531		09/03	JUSTIN KERWICK	3	WEAVERVILLE/0700	WEAVERVILLE/1900
E-381 ENG3 JUNCTION CITY 2533		09/03	JAMES DASDON	3	WEAVERVILLE/0700	WEAVERVILLE/1900
E-674 ENG3 BLACK RANGE ENTERPRISES		09/04	TIMOTHY PEARSON	3	WEAVERVILLE/0700	WEAVERVILLE/1900
E-595 ENG6 BLAZE RUNNERS 06		09/05	JOHN VINCENT	3	WEAVERVILLE/0700	WEAVERVILLE/1900
E-663 ENG6 SHF - #651		09/05	SAMANTHA VALDEZ	4	WEAVERVILLE/0700	WEAVERVILLE/1900
E-80 WTT1 ROCK CREEK (24 HR)		09/02	GARY SABIN	2	WEAVERVILLE/0700	WEAVERVILLE/1900
E-24 WTS2 FORTNER EXCAVATION		09/11	DANIEL JONES	1	WEAVERVILLE/0700	WEAVERVILLE/1900
S-21 EQD PUMPZILLA 2 TRINITY DAY (DS)		09/13	SERGIO BETANCOURT	2	WEAVERVILLE/0700	WEAVERVILLE/1900
E-632 DOZ2 BUD GARMEN		09/09	JEREMY SNEED	2	WEAVERVILLE/0700	WEAVERVILLE/1900
E-481 DOZ3 C M CONSTRUCTION		09/07	STEVEN EDSALL	2	WEAVERVILLE/0700	WEAVERVILLE/1900
E-385 SKG2 LET-ER-BUCK		09/09	DARREN WARD	2	WEAVERVILLE/0700	WEAVERVILLE/1900
E-486 MAST HIGHTOWER		09/09	MARSHALL COX	2	WEAVERVILLE/0700	WEAVERVILLE/1900
8. Division/Group Communication Summary						
Function	Channel	RX Frequency N/W	RX Tone/NAC	TX Frequency N/W	TX Tone/NAC	Mode
COMMAND	1	173.8125 N	107.2	168.4750 N	107.2	M
TACTICAL	CH 7 / TAC 7	168.6000 N	107.2	168.6000 N	107.2	
AIR TO GROUND	13	171.0375 N		171.0375 N		
TACTICAL	CALCORD - CH 15	156.0750 N	156.7	156.0750 N	156.7	
AIR GUARD	16	168.6250 N		168.6250 N	110.9	
9. Prepared By (Resource Unit Leader)			Approved By (Planning Section Chief)		Date	Time
LISA SAPERSTEIN, RESL(T)			PETER BUTTERI, PSC1		08/28/2021	1626

Division/Group Assignment List (ICS 204 WF)
Controlled Unclassified Information//Basic

1. Incident Name:		3.	
MONUMENT NORTH		Branch:	Division/Group
2. Operational Period: 24 HR		10	U
Date/Time From: 08/29/2021 0700	SUN	Date/Time To: 08/30/2021 0700	MON

4. Operations Personnel			
BRANCH DIRECTOR	CLINTON NORTHWAY (8/30)	FIELD OPERATIONS	JON GLOVER (8/30)
DIVISION/GROUP SUPERVISOR	JAMIE MAYOR (8/30) JACOB BAILEY (T) (8/30)	PLANNING OPERATIONS	KAREN SCHOLL (8/30) RANDY FOLAND (T) (8/30)

5. Resources Assigned this Period					
Strike Team / Task Force / Resource Designator	LWD	Leader	Number Persons	Drop Off PT./Time	Pick Up PT./Time
O-57 REAF	09/01	ERIK RADEMACHER	1	WEAVERVILLE/0700	WEAVERVILLE/1900
O-453 REAF	09/02	KATY BARTZOKIS	1	WEAVERVILLE/0700	WEAVERVILLE/1900
O-325 REAF	09/09	MOLLY BREITMUN	1	WEAVERVILLE/0700	WEAVERVILLE/1900
O-624 ARCH	09/08	THEO SHAHEEN-MCCONNELL	1	WEAVERVILLE/0700	WEAVERVILLE/1900
O-857 REAF	09/11	MICHAEL MCFADIN	1	WEAVERVILLE/0700	WEAVERVILLE/1900
O-469 SOFR	09/04	DAN HARKER	1	WEAVERVILLE/0700	WEAVERVILLE/1900
E-646 EMTF	09/05	JARREN BENNETT	1	WEAVERVILLE/0700	WEAVERVILLE/1900
O-781 EMPF	09/10	CODY GILMORE	1	WEAVERVILLE/0700	WEAVERVILLE/1900
E-706 AMBU 3	09/08	SARAH ORR	2	WEAVERVILLE/0700	WEAVERVILLE/1900

6. Control Operations/Work Assignments:

TASK: Keep fire west of the North Fork of the Trinity River. Continue prep on Hobo Gulch Road, Backbone Ridge Trail, and contingency line between East Fork Road and Canyon Creek Rd. Maintain a presence on Hwy 299 and Dutch Creek Road and support CAL FIRE Division DD with any needs.

PURPOSE: Minimize fire spread east of East Fork Rd. and Hobo Gulch Rd.

END STATE: Reduce threat of fire to structures and critical infrastructures.

- 7. Special Instructions:**
- Resources with (DS) after name work 24 hours, double shifts
 - Store equipment at Drop Points. Secure all equipment to prevent theft.

8. Division/Group Communication Summary						
Function	Channel	RX Frequency N/W	RX Tone/NAC	TX Frequency N/W	TX Tone/NAC	Mode
COMMAND	1	173.8125 N	107.2	168.4750 N	107.2	M
TACTICAL	CH 7 / TAC 7	168.6000 N	107.2	168.6000 N	107.2	
AIR TO GROUND	13	171.0375 N		171.0375 N		
TACTICAL	CALCORD - CH 15	156.0750 N	156.7	156.0750 N	156.7	
AIR GUARD	16	168.6250 N		168.6250 N	110.9	

9. Prepared By (Resource Unit Leader)	Approved By (Planning Section Chief)	Date	Time
LISA SAPERSTEIN, RESL(T)	PETER BUTTECH, POC1	08/28/2021	1626

Division/Group Assignment List (ICS 204 WF)
Controlled Unclassified Information//Basic

1. Incident Name:		3.				
MONUMENT NORTH		Branch:		Division/Group		
2. Operational Period: 24 HR		10		U		
Date/Time From: 08/29/2021 0700 SUN	Date/Time To: 08/30/2021 0700 MON					
4. Operations Personnel						
BRANCH DIRECTOR	CLINTON NORTHWAY (8/30)	FIELD OPERATIONS		JON GLOVER (8/30)		
DIVISION/GROUP SUPERVISOR	JAMIE MAYOR (8/30) JACOB BAILEY (T) (8/30)	PLANNING OPERATIONS		KAREN SCHOLL (8/30) RANDY FOLAND (T) (8/30)		
7. Special Instructions:						
<ul style="list-style-type: none"> • GPS all pump locations and turn in to Division. • Backhaul all trash to appropriate disposal site. • Document any area that may have hazmat or unknown chemicals. <p>Safety Cowie - All Branches</p> <p>MEDICAL RESPONSE: REMS 1 staged at Bar 717 Ambulance 4 (Day) at Willow Creek Ambulance 3 at Big Bar</p> <p>On this incident CALCORD is to be used as a local medical tactical channel if needed to communicate with non-incident resources. The command channel is the primary channel for all medical emergencies. CALCORD also may be used for A/G communications with non-incident aircraft. Resources assisting in South Zone division should continue to use regularly assigned tactical channels.</p>						
8. Division/Group Communication Summary						
Function	Channel	RX Frequency N/W	RX Tone/NAC	TX Frequency N/W	TX Tone/NAC	Mode
COMMAND	1	173.8125 N	107.2	168.4750 N	107.2	M
TACTICAL	CH 7 / TAC 7	168.6000 N	107.2	168.6000 N	107.2	
AIR TO GROUND	13	171.0375 N		171.0375 N		
TACTICAL	CALCORD - CH 15	156.0750 N	156.7	156.0750 N	156.7	
AIR GUARD	16	168.6250 N		168.6250 N	110.9	
9. Prepared By (Resource Unit Leader)		Approved By (Planning Section Chief)		Date	Time	
LISA SAPERSTEIN, RESL(T)		PETER BUTTERFIELD, PSC1		08/28/2021	1626	

Division/Group Assignment List (ICS 204 WF)
Controlled Unclassified Information//Basic

1. Incident Name:		3.	
MONUMENT NORTH		Branch: 40	Division/Group NORTH CONTINGENCY
2. Operational Period: 24 HR			
Date/Time From: 08/29/2021 0700	SUN	Date/Time To: 08/30/2021 0700	MON

4. Operations Personnel			
BRANCH DIRECTOR	JAKE LIVINGSTON (8/30) CHRIS WENNOGLE (T) (8/30)	FIELD OPERATIONS	JON GLOVER (8/30)
DIVISION/GROUP SUPERVISOR	BEN ENGELHARDT (8/30) TRAVIS MCCABE (T) (8/30)	PLANNING OPERATIONS	KAREN SCHOLL (8/30) RANDY FOLAND (T) (8/30)

5. Resources Assigned this Period					
Strike Team / Task Force / Resource Designator	LWD	Leader	Number Persons	Drop Off PT./Time	Pick Up PT./Time
O-685 TFLD	09/04	CHEVEYO MUNK	1	WEAVERVILLE/0700	WEAVERVILLE/1900
O-783 TFLD	09/06	KEITH ROHRS	1	BAR 717/0700	BAR 717/1900
O-418.113 TFLD (T)	08/30	CHARLES BALDNER-HATHAWAY	1	BAR 717/0700	BAR 717/1900
O-744 HEQB	09/06	HAN DOMINI	1	WEAVERVILLE/0700	WEAVERVILLE/1900
C-105 HC2 J FRANCO REFORESTATION	09/05	ESEQUIEL TAPIA	20	BAR 717/0700	BAR 717/1900
O-83 FMOD TIMBERWOLF	09/04	ROCKY SULLIVAN	2	WEAVERVILLE/0700	WEAVERVILLE/1900
E-555 ENG6 KENTUCKY	09/02	TIM COWELL	4	BAR 717/0700	BAR 717/1900
E-618 ENG3 8333	09/05	VICTOR PRECIADO	5	BAR 717/0700	BAR 717/1900
E-648 ENG6 GCT E5	09/05	JASON CAMPBELL	3	BAR 717/0700	BAR 717/1900
E-661 ENG6 CLEARWATER FIRE 62	09/06	BRIAN TERRY	3	WEAVERVILLE/0700	WEAVERVILLE/1900
E-769 WTT2 TACTICAL 31 CA-TNF	09/09	DANNY RASMUSSEN	2	BAR 717/0700	BAR 717/1900
E-170 DOZ1 R. BROWN CONST	09/01	GARY HARRIS	2	WEAVERVILLE/0700	WEAVERVILLE/1900
E-13 DOZ2 BEN'S TRUCK & EQUIPMENT	09/06	BILL SCARBROUGH	2	WEAVERVILLE/0700	WEAVERVILLE/1900
E-14 DOZ2 NORTHSTATE	08/29	WADE FLORY	2	WEAVERVILLE/0700	WEAVERVILLE/1900
E-25 DOZ2 BUD GARMAN CONSTRUCTION	08/31	BEDA GARMAN	2	WEAVERVILLE/0700	WEAVERVILLE/1900
E-171 DOZ2 R. BROWN CONST	09/01	JAROD FULLERTON	2	WEAVERVILLE/0700	WEAVERVILLE/1900
E-482 DOZ3 BRATCHER SERVICES	09/07	RON DARBY	2	WEAVERVILLE/0700	WEAVERVILLE/1900
E-477 DOZ3 LET-ER-BUCK TRUCKING	09/06	DON ANDREWS	2	WEAVERVILLE/0700	WEAVERVILLE/1900

8. Division/Group Communication Summary						
Function	Channel	RX Frequency N/W	RX Tone/NAC	TX Frequency N/W	TX Tone/NAC	Mode
COMMAND	2	171.5375 N	107.2	164.8625 N	107.2	
TACTICAL	CH 11/ TAC 11	168.2375 N	107.2	168.2375 N	107.2	
AIR TO GROUND	13	171.0375 N		171.0375 N		
TACTICAL	CALCORD - CH 15	156.0750 N	156.7	156.0750 N	156.7	
AIR GUARD	16	168.6250 N		168.6250 N	110.9	

9. Prepared By (Resource Unit Leader)	Approved By (Planning Section Chief)	Date	Time
JULIE VORACHEK, RESL (T)	PETER BUTTERI, PSC1	08/28/2021	1626

Division/Group Assignment List (ICS 204 WF)
Controlled Unclassified Information//Basic

1. Incident Name:				3.			
MONUMENT NORTH				40	Branch:		Division/Group
2. Operational Period: 24 HR					NORTH CONTINGENCY		
Date/Time From: 08/29/2021 0700 SUN		Date/Time To: 08/30/2021 0700 MON					
4. Operations Personnel							
BRANCH DIRECTOR		JAKE LIVINGSTON (8/30) CHRIS WENNOGLE (T) (8/30)		FIELD OPERATIONS		JON GLOVER (8/30)	
DIVISION/GROUP SUPERVISOR		BEN ENGELHARDT (8/30) TRAVIS MCCABE (T) (8/30)		PLANNING OPERATIONS		KAREN SCHOLL (8/30) RANDY FOLAND (T) (8/30)	
5. Resources Assigned this Period							
Strike Team / Task Force / Resource Designator	LWD	Leader	Number Persons	Drop Off PT./Time	Pick Up PT./Time		
E-479 DOZ3 J GREENWOOD	09/09	SHAUN STEWART	2	BAR 717/0700	BAR 717/1900		
E-31 MAST KIT CONTRACTING	08/31	IKE TOMLINSON	2	WEAVERVILLE/0700	WEAVERVILLE/1900		
E-32 MAST EVANS RIGHT OF 32	08/31	TEO GONZALES	1	WEAVERVILLE/0700	WEAVERVILLE/1900		
E-33 MAST EVANS RIGHT OF	09/01	ROBERT TAYLOR	1	WEAVERVILLE/0700	WEAVERVILLE/1900		
E-34 MAST EVANS RIGHT OF	08/31	MIKE EVANS	2	WEAVERVILLE/0700	WEAVERVILLE/1900		
E-428 MAST CUTTING EDGE	09/04	SERGIO RENTERIA	2	WEAVERVILLE/0700	WEAVERVILLE/1900		
E-429 MAST HACKER MACHINES	09/04	CHAD METE	2	WEAVERVILLE/0700	WEAVERVILLE/1900		
E-217 GRD LET-ER-BUCK	09/01	DON ANDREWS	2	WEAVERVILLE/0700	WEAVERVILLE/1900		
E-684 LDFR	09/05	DAVE BROWN	2	WEAVERVILLE/0700	WEAVERVILLE/1900		
O-712 FOBS (T)	09/07	JEREMY E SONES	1	WEAVERVILLE/0700	WEAVERVILLE/1900		
O-608 FOBS (T)	09/04	TRAVIS SAGEBIEL	1	WEAVERVILLE/0700	WEAVERVILLE/1900		
O-346 REAF	08/29	JOSHUA LEE RIVERA	1	WEAVERVILLE/0700	WEAVERVILLE/1900		
O-704 REAF	09/05	CHRISTOPHER SHAW	1	WEAVERVILLE/0700	WEAVERVILLE/1900		
O-418.64 SOFR	08/31	RYAN KEOGH	1	WEAVERVILLE/0700	WEAVERVILLE/1900		
O-679 AEMT EMT7	09/07	KADY LUKOWICZ	1	BAR 717/0700	BAR 717/1900		
O-92 RES REMS 1	08/29	STEVEN HERREA	4	WEAVERVILLE/0700	WEAVERVILLE/1900		
O-850 EMPF MED TEAM 3	09/11	JENN RAYMOND	2	WEAVERVILLE/0700	WEAVERVILLE/1900		
8. Division/Group Communication Summary							
Function	Channel	RX Frequency N/W	RX Tone/NAC	TX Frequency N/W	TX Tone/NAC	Mode	
COMMAND	2	171.5375 N	107.2	164.8625 N	107.2		
TACTICAL	CH 11/ TAC 11	168.2375 N	107.2	168.2375 N	107.2		
AIR TO GROUND	13	171.0375 N		171.0375 N			
TACTICAL	CALCORD - CH 15	156.0750 N	156.7	156.0750 N	156.7		
AIR GUARD	16	168.6250 N		168.6250 N	110.9		
9. Prepared By (Resource Unit Leader)		Approved By (Planning Section Chief)			Date	Time	
JULIE VORACHEK, RESL (T)		PETER BUTTE... 2021			08/28/2021	1626	

Division/Group Assignment List (ICS 204 WF)
Controlled Unclassified Information//Basic

1. Incident Name:		3.	
MONUMENT NORTH		Branch:	Division/Group
2. Operational Period: 24 HR		40	NORTH CONTINGENCY
Date/Time From: 08/29/2021 0700 SUN	Date/Time To: 08/30/2021 0700 MON		

4. Operations Personnel			
BRANCH DIRECTOR	JAKE LIVINGSTON (8/30) CHRIS WENNOGLE (T) (8/30)	FIELD OPERATIONS	JON GLOVER (8/30)
DIVISION/GROUP SUPERVISOR	BEN ENGELHARDT (8/30) TRAVIS MCCABE (T) (8/30)	PLANNING OPERATIONS	KAREN SCHOLL (8/30) RANDY FOLAND (T) (8/30)

6. Control Operations/Work Assignments:

TASK: Utilize equipment and ground resources to implement and identify contingency lines. Coordinate with adjoining divisions and zones. Implement structure protection along Hyampom road corridor.

PURPOSE: Prevent loss of structures and values at risk.

END STATE: Keep fire from impacting residences and values at risk along the Hyampom Rd and the communities of Hyampom and Hayfork.

7. Special Instructions:

Identify additional DP's. Minimize impacts to Hyampom Rd.

Safety Keogh and Safety Kudo - Branch 40

MEDICAL RESPONSE:
Ambulance 3 (Day) at Big Bar
Ambulance 4 (Day) at Willow Creek

On this incident CALCORD is to be used as a local medical tactical channel if needed to communicate with non-incident resources. The command channel is the primary channel for all medical emergencies. CALCORD also may be used for A/G communications with non-incident aircraft. Resources assisting in South Zone division should continue to use regularly assigned tactical channels.

8. Division/Group Communication Summary						
Function	Channel	RX Frequency N/W	RX Tone/NAC	TX Frequency N/W	TX Tone/NAC	Mode
COMMAND	2	171.5375 N	107.2	164.8625 N	107.2	
TACTICAL	CH 11/TAC 11	168.2375 N	107.2	168.2375 N	107.2	
AIR TO GROUND	13	171.0375 N		171.0375 N		
TACTICAL	CALCORD - CH 15	156.0750 N	156.7	156.0750 N	156.7	
AIR GUARD	16	168.6250 N		168.6250 N	110.9	

9. Prepared By (Resource Unit Leader)	Approved By (Planning Section Chief)	Date	Time
JULIE VORACHEK, RESL (T)	PETER BUTTERFIELD, PSC1	08/28/2021	1626

Division/Group Assignment List (ICS 204 WF)
Controlled Unclassified Information//Basic

1. Incident Name:				3.		
MONUMENT NORTH				Branch:		Division/Group
2. Operational Period: 24 HR				40		W
Date/Time From: 08/29/2021 0700 SUN		Date/Time To: 08/30/2021 0700 MON				
4. Operations Personnel						
BRANCH DIRECTOR		JAKE LIVINGSTON (8/30) CHRIS WENNOGLE (8/30) (T)		FIELD OPERATIONS		JON GLOVER (8/30)
DIVISION/GROUP SUPERVISOR		TIM RITCHEY (9/11) LOGAN BALLESTEROS (T) (9/7)		PLANNING OPERATIONS		KAREN SCHOLL (8/30) RANDY FOLAND (T) (8/30)
5. Resources Assigned this Period						
Strike Team / Task Force / Resource Designator		LWD	Leader	Number Persons	Drop Off PT./Time	Pick Up PT./Time
O-653 TFLD		09/04	TODD HYATT	1	WEAVERVILLE/0700	WEAVERVILLE/1900
C-108 HC1 LOLO IHC (SWING)		09/09	SHAWN FAIELLA	22	WEAVERVILLE/1000	WEAVERVILLE/2200
C-116 HC2 FRANCO REFORESTATION		09/08	ALBERTO FRANCO-QUEVEDO	20	BAR 717/0700	BAR 717/1900
O-785 FMOD CHARLIE FALLERS		09/09	TACOMA MANUEL	2	WEAVERVILLE/0700	WEAVERVILLE/1900
E-10370 ENG3 MNF 352		09/08	MATHEW ADAMS	5	WEAVERVILLE/0700	WEAVERVILLE/1900
E-662 ENG6 PEANUT PIE		09/06	WADE VISSER	3	WEAVERVILLE/0700	WEAVERVILLE/1900
E-664 ENG6 TIMBER RIDGE FIRE LLC		09/08	JEFF TODD	3	WEAVERVILLE/0700	WEAVERVILLE/1900
E-666 ENG6 ALTERGOTT FORESTRY LLC		09/06	MARCIE MORRE	3	WEAVERVILLE/0700	WEAVERVILLE/1900
E-669 ENG6 LOOMIS FIRE CONTROL		09/08	JAMES DEGEN	3	WEAVERVILLE/0700	WEAVERVILLE/1900
E-636 WTS2 CRAIG MARTIN		09/07	CRAIG MARTIN	1	WEAVERVILLE/0700	WEAVERVILLE/1900
E-480 DOZ3 DIRT WORKS UNLIMITED		09/07	TIM PAULEY	1	BAR 717/0700	BAR 717/1900
E-478 DOZ3 ALVORD		09/07	MATT DAVIS	2	WEAVERVILLE/0700	WEAVERVILLE/1900
E-716 CHIP T2 RAPID RESPONSE FORCE		09/09	EVER SANDOVAL	3	WEAVERVILLE/0700	WEAVERVILLE/1900
E-717 CHIP T2 CTS VENTURES		09/10	SONJA CYRUS	3	WEAVERVILLE/0700	WEAVERVILLE/1900
O-805 REAF		09/09	BRENNA MONTAGNE	1	WEAVERVILLE/0700	WEAVERVILLE/1900
O-858 REAF		09/08	THERESA SCHAFFNER	1	WEAVERVILLE/0700	WEAVERVILLE/1900
6. Control Operations/Work Assignments:						
8. Division/Group Communication Summary						
Function	Channel	RX Frequency N/W	RX Tone/NAC	TX Frequency N/W	TX Tone/NAC	Mode
COMMAND	2	171.5375 N	107.2	164.8625 N	107.2	
TACTICAL	CH 8/ TAC 8	166.7250 N	107.2	166.7250 N	107.2	
TACTICAL	CALCORD - CH 15	156.0750 N	156.7	156.0750 N	156.7	
AIR GUARD	16	168.6250 N		168.6250 N	110.9	
9. Prepared By (Resource Unit Leader)			Approved By (Planning Section Chief)		Date	Time
JULIE VORACHEK, RESL (T)			PETER BUTTERI, PSC1		08/28/2021	1626

Division/Group Assignment List (ICS 204 WF)
Controlled Unclassified Information//Basic

1. Incident Name:		3.	
MONUMENT NORTH		Branch:	Division/Group
2. Operational Period: 24 HR		40	W
Date/Time From: 08/29/2021 0700 SUN	Date/Time To: 08/30/2021 0700 MON		

4. Operations Personnel			
BRANCH DIRECTOR	JAKE LIVINGSTON (8/30) CHRIS WENNOGLE (8/30) (T)	FIELD OPERATIONS	JON GLOVER (8/30)
DIVISION/GROUP SUPERVISOR	TIM RITCHEY (9/11) LOGAN BALLESTEROS (T) (9/7)	PLANNING OPERATIONS	KAREN SCHOLL (8/30) RANDY FOLAND (T) (8/30)

6. Control Operations/Work Assignments:

TASK: Coordinate with Branch 30 and Division RR as South Zone brings their control line west towards Division W. Identify control lines and contingency lines to connect suppression actions with Division RR, Division Z and North Contingency.

PURPOSE: Minimize fire spread to the South and West while reducing impact to the infrastructure and values at risk.

END STATE: Keep fire spread to the North of Hayfork Creek and East of Pattison Peak Ridge.

7. Special Instructions:

MEDICAL RESPONSE:
Ambulance 3 (Day) at Big Bar
Ambulance 4 (Day) at Willow Creek

Safety Keogh and Safety Kudo - Branch 40
Safety Cowie - All Branches

On this incident CALCORD is to be used as a local medical tactical channel if needed to communicate with non-incident resources. The command channel is the primary channel for all medical emergencies. CALCORD also may be used for A/G communications with non-incident aircraft. Resources assisting in South Zone division should continue to use regularly assigned tactical channels.

8. Division/Group Communication Summary						
Function	Channel	RX Frequency N/W	RX Tone/NAC	TX Frequency N/W	TX Tone/NAC	Mode
COMMAND	2	171.5375 N	107.2	164.8625 N	107.2	
TACTICAL	CH 8/ TAC 8	166.7250 N	107.2	166.7250 N	107.2	
TACTICAL	CALCORD - CH 15	156.0750 N	156.7	156.0750 N	156.7	
AIR GUARD	16	168.6250 N		168.6250 N	110.9	

9. Prepared By (Resource Unit Leader)	Approved By (Planning Section Chief)	Date	Time
JULIE VORACHEK, RESL (T)	PETER BUTTERFIELD, PSC1	08/28/2021	1626

Division/Group Assignment List (ICS 204 WF)
Controlled Unclassified Information//Basic

1. Incident Name:			3.			
MONUMENT NORTH			Branch:		Division/Group	
2. Operational Period: 24 HR			40		Z	
Date/Time From: 08/29/2021 0700 SUN	Date/Time To: 08/30/2021 0700 MON					
4. Operations Personnel						
BRANCH DIRECTOR		JAKE LIVINGSTON (8/30) CHRIS WENNOGLE (T) (8/30)		FIELD OPERATIONS		JON GLOVER (8/30)
DIVISION/GROUP SUPERVISOR		KRIS DUDLEY (8/30) JUSTEN JOHANSEN (T) (8/30)		PLANNING OPERATIONS		KAREN SCHOLL (8/30) RANDY FOLAND (T) (8/30)
5. Resources Assigned this Period						
Strike Team / Task Force / Resource Designator		LWD	Leader	Number Persons	Drop Off PT./Time	Pick Up PT./Time
C-113 HC1 TRINITY IHC		09/02	TRISTAN DIAS	20	WEAVERVILLE/0700	WEAVERVILLE/1900
C-96 HC2I ASI ARDEN SOLUTIONS		09/04	JEFF HARRISON	20	WEAVERVILLE/0700	WEAVERVILLE/1900
E-598 ENG6 ARIES FIRE SERVICE		08/31	DAN MARTIN	3	WEAVERVILLE/0700	WEAVERVILLE/1900
E-72 WTS1 NORTHSTATE 72		09/01	STEVE SANDERS	1	WEAVERVILLE/0700	WEAVERVILLE/1900
E-21 WTS2 CATTLE LACK RANCH (DS)		09/03	EUGENE GRAHAM	2	WEAVERVILLE/0700	WEAVERVILLE/1900
E-23 WTS2 FORTNER EXCAVATION		08/30	BOB FORTNER	1	WEAVERVILLE/0700	WEAVERVILLE/1900
E-436 DOZ2 SPRATT 436		09/02	ERIC SPRATT	2	WEAVERVILLE/0700	WEAVERVILLE/1900
E-168 DOZ3 BRAD INGRAM CONST		08/29	MIKE UNDERHILL	2	WEAVERVILLE/0700	WEAVERVILLE/1900
E-475 DOZ3 LONESTAR ENTERPRISES, INC.		09/02	COREY SUPACK	2	WEAVERVILLE/0700	WEAVERVILLE/1900
E-50 SKG1 SOFT TRACK ATTACK 50 (DS)		08/31	JEREMY NELSON	1	WEAVERVILLE/0700	WEAVERVILLE/1900
E-771 SKG2 HART VENTURES		09/10	DAVE FISH	1	WEAVERVILLE/0700	WEAVERVILLE/1900
E-761 SKG2 BULL CREEK FORESTRY		09/10	TYLEN DIAL	2	WEAVERVILLE/0700	WEAVERVILLE/1900
O-729 SOFR		09/04	KAY KUDO	1	WEAVERVILLE/0700	WEAVERVILLE/1900
O-517 MED TEAM 1		09/05	MACARTHUR/JOHNSON	2	WEAVERVILLE/0700	WEAVERVILLE/1900
6. Control Operations/Work Assignments:						
8. Division/Group Communication Summary						
Function	Channel	RX Frequency N/W	RX Tone/NAC	TX Frequency N/W	TX Tone/NAC	Mode
COMMAND	2	171.5375 N	107.2	164.8625 N	107.2	
TACTICAL	CH 10/ TAC 10	168.2500 N	107.2	168.2500 N	107.2	
AIR TO GROUND	13	171.0375 N		171.0375 N		
TACTICAL	CALCORD - CH 15	156.0750 N	156.7	156.0750 N	156.7	
AIR GUARD	16	168.6250 N		168.6250 N	110.9	
9. Prepared By (Resource Unit Leader)			Approved By (Planning Section Chief)		Date	Time
JULIE VORACHEK, RESL (T)			PETER BUTTERI, PSC1		08/28/2021	1626

Division/Group Assignment List (ICS 204 WF)
Controlled Unclassified Information//Basic

1. Incident Name:		3.	
MONUMENT NORTH		Branch:	Division/Group
2. Operational Period: 24 HR		40	Z
Date/Time From: 08/29/2021 0700 SUN	Date/Time To: 08/30/2021 0700 MON		

4. Operations Personnel			
BRANCH DIRECTOR	JAKE LIVINGSTON (8/30) CHRIS WENNOGLE (T) (8/30)	FIELD OPERATIONS	JON GLOVER (8/30)
DIVISION/GROUP SUPERVISOR	KRIS DUDLEY (8/30) JUSTEN JOHANSEN (T) (8/30)	PLANNING OPERATIONS	KAREN SCHOLL (8/30) RANDY FOLAND (T) (8/30)

6. Control Operations/Work Assignments:

TASK: Hold existing containment lines from the A/Z break to Pattison Ridge. Hold fire South of Pattison Ridge; utilize checklines when needed to slow fire advancement to the west. Coordinate with the North Contingency Group.

PURPOSE: Minimize fire spread to the South and West while reducing impact to the infrastructure and other values at risk.

END STATE: Hyampom and Hayfork communities are protected.

7. Special Instructions:

- Resources with (DS) after name work 24 hours, double shifts
- Contact Kent Collard Bar 717 for information concerning previous dozer lines north of his property.
- Store equipment at Drop Points. Secure all equipment to prevent theft.
- GPS all pump locations and turn into Division.
- Backhaul all trash to appropriate disposal site.
- Document any area that may have hazmat of unknown chemicals.

Safety Keogh and Safety Kudo - Branch 40
Safety Cowie - All Branches

MEDICAL RESPONSE:
Ambulance 3 (Day) at Big Bar
Ambulance 4 (Day) at Willow Creek

On this incident CALCORD is to be used as a local medical tactical channel if needed to communicate with non-incident resources. The command channel is the primary channel for all medical emergencies. CALCORD also may be used for A/G communications with non-incident aircraft. Resources assisting in South Zone division should continue to use regularly assigned tactical channels.

8. Division/Group Communication Summary						
Function	Channel	RX Frequency N/W	RX Tone/NAC	TX Frequency N/W	TX Tone/NAC	Mode
COMMAND	2	171.5375 N	107.2	164.8625 N	107.2	
TACTICAL	CH 10/ TAC 10	168.2500 N	107.2	168.2500 N	107.2	
AIR TO GROUND	13	171.0375 N		171.0375 N		
TACTICAL	CALCORD - CH 15	156.0750 N	156.7	156.0750 N	156.7	
AIR GUARD	16	168.6250 N		168.6250 N	110.9	

9. Prepared By (Resource Unit Leader)	Approved By (Planning Section Chief)	Date	Time
JULIE VORACHEK, RESL (T)	PETER BUTTERFIELD	08/28/2021	1626

Division/Group Assignment List (ICS 204 WF)
Controlled Unclassified Information//Basic

1. Incident Name:				3.		
MONUMENT NORTH				Branch:		Division/Group
2. Operational Period: 24 HR				NIGHT		W / Z
Date/Time From: 08/29/2021 0700 SUN		Date/Time To: 08/30/2021 0700 MON				
4. Operations Personnel						
BRANCH DIRECTOR		TOGIE WIEHL (8/30) TRENT GIRARD (T) (8/30)		FIELD OPERATIONS		JON GLOVER (8/30)
DIVISION/GROUP SUPERVISOR		HUGH FAIRFIELD-SMITH (8/30) JULIE PODANY (T) (9/6)		PLANNING OPERATIONS		KAREN SCHOLL (8/30) RANDY FOLAND (T) (8/30)
5. Resources Assigned this Period						
Strike Team / Task Force / Resource Designator		LWD	Leader	Number Persons	Drop Off PT./Time	Pick Up PT./Time
E-673.1 TFLD (T)		09/03	ERIC JACKSON	1	WEAVERVILLE/1900	WEAVERVILLE/0700
C-71 HC2 FRANCO REFORESTATION 71		08/29	JOAN ALCANTAR	20	WEAVERVILLE/1900	WEAVERVILLE/0700
C-125 HC2 TRI-CITIES FORESTRY		09/11	JOSE SILVA	20	WEAVERVILLE/1900	WEAVERVILLE/0700
E-505 ENG3 GREY WOLF		08/30	JEFF CAMPBELL	4	WEAVERVILLE/1900	WEAVERVILLE/0700
E-673 ENG3 SACRAMENTO DISTRICT		09/03	HUGO ERHEWAYN	4	WEAVERVILLE/1900	WEAVERVILLE/0700
E-793 ENG6 E 607		09/11	DOUG LESH	6	WEAVERVILLE/1900	WEAVERVILLE/0700
E-787 ENG6 WOODPECKER		09/11	ED FAULKNER	3	WEAVERVILLE/1900	WEAVERVILLE/0700
E-80 WTT1 ROCK CREEK (24 HR)		09/02	TIM DANIEL	2	WEAVERVILLE/1900	WEAVERVILLE/0700
E-21 WTS2 CATTLE LACK RANCH (DS)		08/30	JAMES GOLDIE	2	WEAVERVILLE/1900	WEAVERVILLE/0700
E-22 WTS2 CATTLE LACK RANCH		09/08	CLANCY ENLOW	1	WEAVERVILLE/1900	WEAVERVILLE/0700
E-484 DOZ2 BROWN DOZER		09/07	BARRY BROWN	2	WEAVERVILLE/1900	WEAVERVILLE/0700
E-629 DOZ2 ROWBERRY DOZER		09/06	JIM VARWIG	2	WEAVERVILLE/1900	WEAVERVILLE/0700
E-50 SKG1 SOFT TRACK ATTACK 50 (DS)		09/07	FREDDIE TEDDER	1	WEAVERVILLE/1900	WEAVERVILLE/0700
E-770 SKG2 RIM ROCK EQUIPMENT		09/08	ROBERT TOBIASON	2	WEAVERVILLE/1900	WEAVERVILLE/0700
S-21 EQD PUMPZILLA 2 TRINITY DAY (DS)		09/08	JOHN VELEZ	2	WEAVERVILLE/1900	WEAVERVILLE/0700
O-418.111 SOF2		09/06	TOM NASH	1	WEAVERVILLE/1900	WEAVERVILLE/0700
O-93 RES REMS 2		08/31	BENNETT/DOUGHTERY/WE NTZELL/DECKER	4	WEAVERVILLE/1900	WEAVERVILLE/0700
8. Division/Group Communication Summary						
Function	Channel	RX Frequency N/W	RX Tone/NAC	TX Frequency N/W	TX Tone/NAC	Mode
COMMAND	2	171.5375 N	107.2	164.8625 N	107.2	
TACTICAL	CH 10/ TAC 10	168.2500 N	107.2	168.2500 N	107.2	
TACTICAL	CALCORD - CH 15	156.0750 N	156.7	156.0750 N	156.7	
AIR GUARD	16	168.6250 N		168.6250 N	110.9	
9. Prepared By (Resource Unit Leader)			Approved By (Planning Section Chief)		Date	Time
JULIE VORACHEK, RESL (T)			PETER BUTTERI		08/28/2021	1626

Division/Group Assignment List (ICS 204 WF)
Controlled Unclassified Information//Basic

1. Incident Name:		3.	
MONUMENT NORTH		Branch:	Division/Group
2. Operational Period: 24 HR		NIGHT	W / Z
Date/Time From: 08/29/2021 0700 SUN	Date/Time To: 08/30/2021 0700 MON		

4. Operations Personnel			
BRANCH DIRECTOR	TOGIE WIEHL (8/30) TRENT GIRARD (T) (8/30)	FIELD OPERATIONS	JON GLOVER (8/30)
DIVISION/GROUP SUPERVISOR	HUGH FAIRFIELD-SMITH (8/30) JULIE PODANY (T) (9/6)	PLANNING OPERATIONS	KAREN SCHOLL (8/30) RANDY FOLAND (T) (8/30)

5. Resources Assigned this Period					
Strike Team / Task Force / Resource Designator	LWD	Leader	Number Persons	Drop Off PT./Time	Pick Up PT./Time
O-768 EMPF MEDIC 3	09/08	SHAWN CLARK	1	WEAVERVILLE/1900	WEAVERVILLE/0700
O-677 EMTF EMT 4	09/04	WEDGE WARFORD	1	WEAVERVILLE/1900	WEAVERVILLE/0700

6. Control Operations/Work Assignments:

TASK: Hold existing containment lines from DP50 east and south to Haypress. Continue to patrol and mop up as needed in Division W/Z. Provide support to South Zone Divisions DD and RR. Hold fire south of Pattison Ridge.

PURPOSE: Minimize fire spread to the south and west while reducing impact to the infrastructure and other values at risk.

END STATE: Keep fire spread south and east of Pattison Ridge.

7. Special Instructions:

Resources with (DS) after name work 24 hours, double shifts

Safety Nash - Night Safety

On this incident CALCORD is to be used as a local medical tactical channel if needed to communicate with non-incident resources. The command channel is the primary channel for all medical emergencies. CALCORD also may be used for A/G communications with non-incident aircraft. Resources assisting in South Zone division should continue to use regularly assigned tactical channels.

8. Division/Group Communication Summary						
Function	Channel	RX Frequency N/W	RX Tone/NAC	TX Frequency N/W	TX Tone/NAC	Mode
COMMAND	2	171.5375 N	107.2	164.8625 N	107.2	
TACTICAL	CH 10/ TAC 10	168.2500 N	107.2	168.2500 N	107.2	
TACTICAL	CALCORD - CH 15	156.0750 N	156.7	156.0750 N	156.7	
AIR GUARD	16	168.6250 N		168.6250 N	110.9	

9. Prepared By (Resource Unit Leader)	Approved By (Planning Section Chief)	Date	Time
JULIE VORACHEK, RESL (T)	PETER BUTTEF'	08/28/2021	1626

AIR OPERATIONS SUMMARY ICS-220

Incident Name and Incident Number NORTH AND SOUTH ZONES/ Monument SHF 001187	Sunrise 633	Startup 703	Cutoff 1917	Sunset 1947	Time Prepared 1800	Date Prepared Saturday, August 28, 2021	Prepared By Niko Matteoli
General Remarks, Safety Notes, Hazards, Air Operations Special Equipment, etc. TRACK ALL DIPSITE LOCATIONS / NUMBER OF DIPS / GALLONS TAKEN. TRACK ALL DROP LOCATIONS / NUMBER OF DROPS / GALLONS DROPPED ALL GPS DATA TO BE COLLECTED IN DEGREES, MINUTES, DECIMAL MINUTES, FORMAT. AVOID Aerial Application of Retardant / Foam / Agent within 300' of Waterways, Bodies of Water, etc. If Retardant / Foam / Agent is Dropped Within These Areas Immediately Notify the AOB and Provide the Following Information: Lat / Long, Estimated Number of Gallons and a Map Detailing The Area.							
Operational Period - Date Sunday, August 29, 2021		Operational Period - Time 0700-0700		Rescue Ship Information			
TFR Information Request # A-205 Radius: Polygon NM Altitude: 11500' Centerpoint: Lat Long NOTAMS: 1/0550 Frequency 126.2750 http://lfr.faa.gov/lfr2/list.html		Day G822		Night G822			
Make/Model UH60		Location Redding		Request Procedure for These Aircraft: Through Incident Communications See Medical Plan For Additional Info			

SOUTH-(SOUTH COMMUNICATIONS)											
Frequencies	RX	Tone	TX	Tone	AM / FM	Frequencies	RX	Tone	TX	Tone	AM / FM
AIR TACTICS	169.7250		169.7250		FM	AIR TACTICS	169.7250		169.7250		FM
AIR / AIR TFR	126.2750		126.2750		AM	AIR / AIR TFR	126.2750		126.2750		AM
SOUTH COMMAND CDF C2	151.2650	103.5 (8)	159.3300	151.4 (14)	FM	NORTH COMMAND	173.8125	107.2 (10)	168.4750	107.2 (10)	FM
SOUTH CMD CDF C11 DIV RR	151.1675	103.5 (8)	159.3975	151.4 (14)	FM						
SOUTH ROTOR VICTOR	128.7750		128.7750		AM	NORTH ROTOR VICTOR	123.7750		123.7750		AM
SOUTH ROTOR BRIEFING	134.1750		134.1750		AM						
A/G - Command	171.8625		171.8625		FM	A/G - Command	171.8625		171.8625		FM
SOUTH A/G - Tactical CDF T25	159.2775	192.8 (16)	159.2775	192.8 (16)	FM	NORTH A/G - Tactical	171.0375		171.0375		FM
TOLC (Sky Ranch)	167.9500	151.4 (14)	167.9500	151.4 (14)	FM						
DECK (Sky Ranch)	163.1000		163.1000		FM	DECK (Willow Creek)	168.3500		168.3500		FM
CALCORD - MEDICAL	156.0750	156.7 (6)	156.0750	156.7 (6)	FM	CALCORD - MEDICAL	156.0750	156.7 (6)	156.0750	156.7 (6)	FM
UARGD - Emergency Only	168.6250		168.6250	110.9 (1)	FM	AIRGUARD - Emergency Only	168.6250		168.6250	110.9 (1)	FM

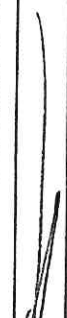
North Zone Helibase									
FAA #	Type	Make/Model	Helibase	Avail	Start	Remarks			
1CK	I	S61	Willow	800	830	A-11			
5TH	I	KMAX	Willow	800	830	A-10			
8AC	I	S64F	Willow	800	830	A-34			
520	II	B-205	Willow	800	830	A-68			
3HT	II	B-205	Willow	800	830	A-97			
503	III	B-407	Willow	800	830	A-152			
UR32	UAS		Willow	800	830				

South Zone					
Position	Name	Phone	Trainee	Phone	
AOBD	Niko Matteoli	(704) 488-2460			
AOBD (D)	Tim Shiffer	(530) 448-2418			
ASGS	Josh Faulkner	(530) 356-1351			
HEBM	Gary Engen	(707) 229-7699			
HLCO	Rudy Ynigues	(530) 515-4440			
HLCO	Tim Shiffer	(530) 448-2418			

Niko Matteoli

ICS 205 - INCIDENT RADIO COMMUNICATIONS PLAN

CONTROLLED UNCLASSIFIED
INFORMATION//BASIC

1. Incident Name: Monument Fire South Zone Incident Channels		2. Date/Time Prepared Date: 08/28/2021 Time: 1930		3. Operational Period: Date From: 08/29/21 Time From: 0700 Date To: 08/30/21 Time To: 0700				
4. Communications								
Ch#	Function	Name	Assigned To	Rx Freq	Rx Tone	Tx Freq	Tx Tone	Notes
1	COMMAND	GDF C2	ALL DIVS	151.2650	103.5 (T8)	159.3300	151.4 (T14)	
2	COMMAND	GDF C11	BRANCH 30	151.1675	103.5 (T8)	159.3975	151.4 (T14)	TO BE USED IN BRANCH 30 ONLY
3								
4	TACTICAL	VFIRE 23	DIV DD / HH	154.2950N	156.7 (T6)	154.2950N	156.7 (T6)	
5	TACTICAL	VFIRE 24	DIV NN	154.2725N	156.7 (T6)	154.2725N	156.7 (T6)	
6	TACTICAL	CDF T26	DIV RR	159.2925N	192.8 (T16)	159.2925N	192.8 (T16)	
7	TACTICAL	CDF T27	SOUTH CONT 1	159.3075N	192.8 (T16)	159.3075N	192.8 (T16)	
8	TACTICAL	CDF T28	SOUTH CONT 2	151.1825	192.8 (T16)	151.1825	192.8 (T16)	
9	TACTICAL	CDF T15	DIV MRB	159.2700	192.8 (T16)	159.2700	192.8 (T16)	
10	TACTICAL	CDF T23	Monument Fuels	159.4500	192.8 (T16)	159.4500	192.8 (T16)	Travel Net for Monument Fuels
11								
12								
13	A/G CMD	A/G CMD	ALL DIVS	171.8625N		171.8625N		A/G COMMAND
14	AIR TO GROUND	CDF T25	ALL DIVS	159.2775	192.8 (T16)	159.2775	192.8 (T16)	A/G TACTICAL
15	MEDICAL	CALCORD	ALL DIVS	156.0750N	156.7 (T6)	156.0750N	156.7 (T6)	MEDICAL COORDINATION
16	AIRGUARD	GUARD 26	ALL DIVS	168.6250N		168.6250N	110.9 (T1)	EMERGENCY USE ONLY
17								
18								
19								
20	AIRGUARD	GUARD 26	ALL DIVS	168.6250N		168.6250N	110.9 (T1)	EMERGENCY USE ONLY
5. Special Instructions								
<p>TO CONFIRM YOU HAVE THE MOST CURRENT CLONE, ENSURE YOUR DISPLAY OF CHANNEL 16 OR 20 MATCHES CHANNEL 16 OR 20 OF THE 205 - HEIGHT AND POWER ARE KEY WHEN USING RADIOS; BE AT A HIGH POINT, USE A MOBILE IF POSSIBLE, AND USE RADIO RELAYS WHEN NEEDED</p>								
6. Prepared by (Communications Unit Leader): Name: Chris Johns			Signature: 					
ICS 205 - CONTROLLED UNCLASSIFIED INFORMATION//BASIC			NIMS IAP Date/Time: 08/28/21 1930					

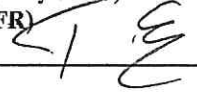
INCIDENT RADIO COMMUNICATIONS PLAN ICS 205		Incident Name Monument North Fire		Date/Time Prepared 8/28/21 @ 1800		Operational Period Date/Time Day-Night 8/29/21 0600 - 8/30/21 0600			
4. BASIC RADIO CHANNEL UTILIZATION									
Ch #	Channel Name	Assignment	RX Frequency Narrowband (N) Wideband (W)	RX Tone/NAC	TX Frequency Narrowband (N) Wideband (W)	TX Tone/NAC	Mode Digital (D) Analog (A) Mixed (M)	Remarks	
1	CMD 1	ALL DIVISIONS	173.8125	N	168.4750	N	A	CMD Located on Weaver Bally	
2	CMD 2	ALL DIVISIONS	171.5375	N	164.8625	N	A	CMD located On Hayfork Bally	
3	CMD 3	ALL DIVISIONS	171.0875	N	164.6000	N	A	CMD Located on Bully Choop	
4	CMD 4	ALL DIVISIONS	173.5000	N	165.8125	N	A	CMD Located on Brush Mt.	
5	CMD 5	ALL DIVISIONS	173.6500	N	164.8125	N	A	CMD Located on Ironside Lookout	
6	TAC 6	DIV A	168.0500	N	168.0500	N	A		
7	TAC 7	DIV U, River Group West	168.6000	N	168.6000	N	A		
8	TAC 8	DIV G, DIV W Staging	166.7250	N	166.7250	N	A		
9	TAC 9	DIV E	166.7750	N	166.7750	N	A	NIGHT DIVISION A/E	
10	TAC 10	DIV Z, DIV M	168.2500	N	168.2500	N	A	NIGHT DIVISION W/Z	
11	TAC 11	NORTH CONTINGENCY	168.2375	N	168.2375	N	A		
12	A/G CMD	A/G CMD	171.8625	N	171.8625	N	A	Incident Air to Ground Command	
13	A/G TAC	ALL DIVISIONS	171.0375	N	171.0375	N	A	Incident Air to Ground Tactical	
14	IA-CMD	IA-CMD	171.5750	N	165.0125	N	A	Shasta Forest Repeater	
15	CALCORD	MEDICAL COORDINATION	156.0750	N	156.0750	N	A	(TONE 6)	
16	EMERGENCY AIR	GUARD	168.6250	N	168.6250	N	A	EMERGENCY HAILING OF AIRCRAFT	
I-205 Prepared By		Gregory S Loquist - COM1 (t) Gregory S Loquist						USE HUMAN REPEATERS WHEN NEEDED.	

**INCIDENT RADIO COMMUNICATIONS
PLAN ICS 205**

Incident Name		Date/Time Prepared		Operational Period Date/Time							
Monument North IA		8/28/21 @ 1800		Day-Night 8/29/21 0600 - 8/30/21 0600							
4. BASIC RADIO CHANNEL UTILIZATION											
Ch #	Channel Name	Assignment	RX Frequency Narrowband (N) Wideband (W)	RX Tone/NAC	TX Frequency Narrowband (N) Wideband (W)	TX Tone/NAC	Mode Digital (D) Analog (A) Mixed (M)	Remarks			
1	COMMAND	SHF-R	171.5750	N	165.0125	N	OST	A	Shasta Forest Repeater (Tone 4,5,6,9)		
2	COMMAND	SERV-R	171.5000	N	164.8250	N	OST	A	Shasta Service Net (Tone 4,6)		
3	COMMAND	SHU-L	151.1600	N	159.2700	N	OST	A	CALFIRE Shasta Command (Tone 3,7)		
4	COMMAND	SRF-R	172.3750	N	164.1750	N	OST	A	Six Rivers Forest Repeater (Tone 5,6)		
5	TACTICAL	NIFC T2	168.2000	N	168.2000	N		A	I/A Tactical		
6	TACTICAL	RS TAC 4	166.5500	N	166.5500	N		A	I/A Tactical		
7	TACTICAL	RS TAC 5	167.1125	N	167.1125	N		A	I/A Tactical		
8	TACTICAL	CDF T11	151.4450	N	151.4450	N	192.8	A	I/A Tactical (Tone 16)		
9	LOCAL GOV RPT	XTR-R	154.7850	N	158.7600	N		A	Trinity County Command (Tone 10,13)		
10	MONUMENT CMD	MON CM2	171.5375	N	164.8626	N	107.2	A	Monument Command Hayfork Bally (Tone 10)		
11	MONUMENT CMD	MON CM4	173.5000	N	165.8125	N	107.2	A	Monument North Command Brush Mountain (Tone 10)		
12	MONUMENT AIR TO GROUND	AG TAC	171.0375	N	171.0375	N		A	Monument North A/G Brush Mountain		
13	AIR TO GROUND SECONDARY	AG08 SEC	166.8750	N	166.8750	N		A	IA A/G Secondary		
14	AIR TO GROUND PRIMARY	AG43 PRI	167.6000	N	167.6000	N		A	IA A/G Primary		
15	CALCORD	MEDICAL COORDINATION	156.0750	N	156.0750	N	156.7	A	MEDIVAC Coordination (Tone 6)		
16	EMERGENCY AIR	GUARD	168.6250	N	168.6250	N	110.9	A	Emergency (Tone 1)		
I-205 Prepared By						Gregory Loquist COML (t) <i>Gregory S Loquist</i> USE HUMAN REPEATERS WHEN NEEDED.					

MEDICAL PLAN ICS 206	1. INCIDENT NAME MONUMENT	2. DATE PREPARED 08/28/2021	3. TIME PREPARED 1800	4. OPERATIONAL PERIOD 08/29-08/30, 0700-0700				
5. INCIDENT MEDICAL AID STATIONS								
MEDICAL SUPPLY STATIONS	LOCATION			PARAMEDICS				
CAL MAT	ANDERSON BASE CAMP			YES MD				
MERT	TRINITY RIVER CAMP			NO PA				
6. TRANSPORTATION								
A. AMBULANCE SERVICES								
NAME	LOCATION	PHONE	PARAMEDICS					
			YES	NO				
AMBULANCE 103	BRANCH 30	CMD CHANNEL	X					
AMBULANCE 104	BRANCH 30	CMD CHANNEL	X					
REMS 1	BR 30 DIV NN	CMD CHANNEL	X					
REMS 5 (UTV)	BR 30 DIV RR	CMD CHANNEL	X					
B. AIR AMBULANCES								
NAME	LOCATION		PARAMEDICS					
			YES	NO				
CALIFORNIA GUARD 822 (24 HOUR HOIST)	Redding Airport		--Contact CMD--					
			X					
7. HOSPITALS								
NAME	ADDRESS	TRAVEL TIME		PHONE	HELIPAD		BURN CENTER	
		AIR	GRd	Frequency	YES	NO	YES	NO
SHASTA REG MED CTR TRAUMA LVL 3	1100 BUTTE ST, REDDING 40° 35.106'N, -122° 23.268'W	15 Min	60 Min	(530) 244-5400 468.025 Tx, 468.025 Rx	X			X
MERCY MED CTR TRAUMA LVL 2	2175 ROSALINE AVE, REDDING 40° 34.332'N, -122° 23.796'W	15 Min	60 Min	(530) 225-7201 468.075 Tx, 463.000 Rx	X			X
UC DAVIS TRAUMA LVL 1	2315 STOCKTON BLVD, SACRAMENTO 38° 33.360'N, -121° 27.330'W	1.25 Hour	4 Hour	(916) 734-2011 446.525 Tx, 203.5 Rx	X		X	
TRINITY HOSPITAL WEAVERVILLE	60 EASTER AVENUE, WEAVERVILLE 40° 44.275'N, -122° 56.359'W	10 Min	30 Min	(530) 623-5541 x1	X			X
8. MEDICAL EMERGENCY PROCEDURES								
<p style="text-align:center;">EMERGENCY FREQUENCY: "LINE EMERGENCY"</p> <p>Crew Supervisor will contact Division Supervisor with patient complaint/condition, location and resource needs.</p> <ul style="list-style-type: none"> • Division/Group Supervisor contacts: <ul style="list-style-type: none"> 1. Closest EMS resource 2. Communications Unit • Communications Unit contacts: <ul style="list-style-type: none"> 1. Ground or Air ambulance as requested 2. Operations 3. Safety 4. Medical Unit • Division Supervisor or designee will serve as point of contact and run medical emergency on assigned channel. <ul style="list-style-type: none"> 1. A pre-assigned COMMAND frequency and CALCORD should be used for TWI and only for duration of need. • Communications Unit will clear command channel for emergency traffic as needed and only for duration of need. <p style="text-align:center;">CAMP EMERGENCY:</p> <p>Contact Medical Unit with patient complaint/condition and location. Medical Staff will respond to stabilize incident:</p> <ul style="list-style-type: none"> • Medical Unit contacts: <ul style="list-style-type: none"> 1. Communications 2. Safety 3. Logistics 4. Operations 5. Crew Supervisor 6. Comps/Claims 					<p style="text-align:center;">INJURY REPORTING PROCEDURES</p> <p>CHIEF COMPLAINT _____</p> <p>LOCATION OF PATIENT _____</p> <p>POINT OF CONTACT _____</p> <p>TRANSPORTATION REQUESTED BY: AIR ___ GROUND ___</p> <p>POINT OF PICKUP _____</p> <p>LAT _____ LONG _____</p> <p>PATIENT UNIT ID _____</p> <p>IS AN EMT/P WITH PATIENT: YES ___ NO ___</p> <p>AGE _____</p> <p>SEX: MALE ___ FEMALE ___</p> <p style="text-align:center;">ALL EMERGENCIES---Secure the area and identify witnesses for later investigation. Keep an accurate log of events.</p> <p style="text-align:center;">EMERGENCY # 916-883-0934</p>			
ICS 206	9. PREPARED BY: (Medical Unit Leader) JOSH STALEY-(MEDL)				10. REVIEWED BY: (Safety Officer) TIM ERWIN-(SOFR)			

-38-



\$ FINANCE MESSAGE \$

****Please No Off Site Feeding Unless Approved by a Finance Section Chief. Certain circumstances will need to apply for our approval.****

CAL FIRE PERSONNEL

Make sure to create a paper FC-33 so we can update.
If anyone has any CalCard travel receipts and meal/lodging sign in sheets, please get a copy to Finance.

LOCAL GOVERNMENT RESOURCES

Make sure you check in with TIME Unit for ABH or F-42 Paperwork.

ALL HIRED EQUIPMENT

Make sure you get your shift ticket filled out by your **Division Group Supervisor or Supervisor.**

ALL SUPERVISORS OF HIRED EQUIPMENT

Shift Tickets for hired equipment need to be signed and turned in to TIME daily. Ensure the shift ticket is filled out completely (including evaluation), accurately and legibly. **Example included in IAP.**

PROPERTY DAMAGE or INJURIES

Please report any property damage caused by suppression activities and/or injuries to the Comp/Claims Unit.

MONUMENT NORTH FIRE
Finance Process
CA-SHF-001187



For resources hired out of state and have VIPR agreement scan QR code

IMPORTANT INFORMATION: If you are a Monument North Resource, i.e., you have a RO # four digits or less (E-489), and you are 'loaned' to the South Zone, please note **SOUTH ZONE** or **Monument South Zone** on your Shift Ticket / CTR.

Please send all documents to 2021.monument.finance@firenet.gov for all resources.

Email Subject Line: TIME/Resource Order No./ Resource Name/Position Code – Put TIME, CTR, SHIFT TICKET in the subject line with your information

(Example: TIME/O-200/SBear/Safety)

Email all documents that pertain to your assignment:

Agency Overhead	Agency ADs / EFFs	VIPR Resources	Contract / Agency Crews	Cooperators
Resource Order Shift Tickets	Resource Order Casual Hire Form Shift Tickets	Resource Order VIPR Agreement Schedule of Items Inspections Shift Tickets	Resource Order Manifest Agreement / Contract Schedule of Items Inspections Crew Time Reports	Resource Order Agreement Shift Tickets / CTRs

Submit Equipment Shift Tickets or Crew Time Reports (CTRs) daily to 2021.monument.finance@firenet.gov

Please include your email address and phone number in the body of the email when sending your documents.

Any questions, please call: FINANCE – (213) 431-4035 – Weaverville
(425) 500-9464 – Weaverville
(425) 500-9475 – Willow Creek
(360) 624-2315 – Luann Grover

COMP / CLAIMS

Weaverville

Barb Haxby
barbara_haxby@firenet.gov
(360) 601-8820

Willow Creek

Susan Haggerty
susan_haggerty@firenet.gov
(586) 943-3016

24 Hour Shift

EMERGENCY SHIFT TICKET and EVALUATION FORM					Contractor Name				
The responsible Government Officer will complete this form each shift					Fireline Builders				
Incident or Project Name		Incident Number		Request Number		Operator #1		Operator #2	
August Complex West Zone		CAMEU010843		E-99		Jim Smith		John Jones	
Agreement Number					Operator Furnished By:				
LNU01234567					<input checked="" type="checkbox"/> Contractor <input type="checkbox"/> Government				
Equipment Make			Equipment Model / Type			Operating Supplies Furnished By:			
CAT			Dozer D6H			<input checked="" type="checkbox"/> Contractor <input type="checkbox"/> Government			
Serial Number			Licence Number			Equipment Status			
6LN3344						<input checked="" type="checkbox"/> Inspected <input checked="" type="checkbox"/> Under Agreement			
Equipment Use					Remarks/Comments **				
(Circle) Hours / Days / Miles					Released by Government				
Date Mo / Day					Withdrawn by Contractor				
Start		Stop		Work		Assignment			
8/2		0700		2400		17 Division J			
8/3		0001		0700		7 Division J			
Vendor Rating					Govt. Rep. Name and Position - PRINT				
Poor* Avg. Good Exc. N/A					Mike Brown Div J				
Met Performance Expectations					Govt. Rep. Signature				
Equipment in Safe Working Condition					Mike Brown				
Operator Skill Level					Contractor Signature				
Operates Safely					Jim Smith				
Operator's Cooperation Level					Date				
Overall Performance					Time				
					08/03/16 0700				
* NOTE: Any rating of POOR requires an explanation in Comment Section. **Final evaluation or for more documentation, use an ICS Form 230 or equivalent.					CALFIRE 297 (Rev 3-2011)				
Pink - Finance		Blue - Home Unit HE Coordinator		Yellow - Vendor		White - Govt Representative			

12 Hour Shift

EMERGENCY SHIFT TICKET and EVALUATION FORM					Contractor Name				
The responsible Government Officer will complete this form each shift					H2O For You				
Incident or Project Name		Incident Number		Request Number		Operator #1		Operator #2	
August Complex West Zone		CAMEU010843		E-89		James Russell			
Agreement Number					Operator Furnished By:				
LNU11111199					<input checked="" type="checkbox"/> Contractor <input type="checkbox"/> Government				
Equipment Make			Equipment Model / Type			Operating Supplies Furnished By:			
Peterbilt			2000 Gallon			<input checked="" type="checkbox"/> Contractor <input type="checkbox"/> Government			
Serial Number			Licence Number			Equipment Status			
11145N			SE653574			<input checked="" type="checkbox"/> Inspected <input checked="" type="checkbox"/> Under Agreement			
Equipment Use					Remarks/Comments **				
(Circle) Hours / Days / Miles					Released by Government				
Date Mo / Day					Withdrawn by Contractor				
Start		Stop		Work		Assignment			
8/2		0001		0700		7 Off Shift			
8/2		0700		2000		13 Division B			
8/2		2000		2400		4 Off Shift			
Vendor Rating					Govt. Rep. Name and Position - PRINT				
Poor* Avg. Good Exc. N/A					Steve Hampton, Div B				
Met Performance Expectations					Govt. Rep. Signature				
Equipment in Safe Working Condition					Steve Hampton				
Operator Skill Level					Contractor Signature				
Operates Safely					James Russell				
Operator's Cooperation Level					Date				
Overall Performance					Time				
					08/02/16 2000				
* NOTE: Any rating of POOR requires an explanation in Comment Section. **Final evaluation or for more documentation, use an ICS Form 230 or equivalent.					CALFIRE 297 (Rev 3-2011)				
Pink - Finance		Blue - Home Unit HE Coordinator		Yellow - Vendor		White - Govt Representative			

24 Hour Shift to 12 Hour Shift

EMERGENCY SHIFT TICKET and EVALUATION FORM						Contractor Name	
The responsible Government Officer will complete this form each shift						Fireline Builders	
Incident or Project Name		Incident Number		Request Number		Operator #1	Operator #2
August Complex West Zone		CAMEU010843		E-99		Jim Smith	John Jones
Agreement Number						Operator Furnished By:	
LNU01234567						<input checked="" type="checkbox"/> Contractor <input type="checkbox"/> Government	
Equipment Make		Equipment Model / Type				Operating Supplies Furnished By:	
CAT		Dozer D6H				<input checked="" type="checkbox"/> Contractor <input type="checkbox"/> Government	
Serial Number		Licence Number				Equipment Status	
6LN3344						<input checked="" type="checkbox"/> Inspected <input type="checkbox"/> Released by Government <input checked="" type="checkbox"/> Under Agreement <input type="checkbox"/> Withdrawn by Contractor	
Equipment Use						Remarks/Comments **	
(Circle) <u>Hours</u> / Days / Miles						Supplier went from 24 hour to 12 hour shift	
Date	Start	Stop	Work	Assignment			
8/2	0001	700	7	Division J			
8/2	0700	2300	16	Division J			
8/2	2300	2400	1	OFF SHIFT			
Vendor Rating						Govt. Rep. Name and Position - PRINT	
		Poor*	Avg.	Good	Exc.	N/A	
Met Performance Expectations		Vendor Rating must be completed				Govt. Rep. Signature	
Equipment In Safe Working Condition						Mike Brown Div J	
Operator Skill Level						Mike Brown	
Operates Safely						Contractor Signature	
Operator's Cooperation Level						Jim Smith	
Overall Performance						Date	
* NOTE: Any rating of POOR requires an explanation in Comment Section.						CALFIRE 297	
**Final evaluation or for more documentation, use an ICS Form 230 or equivalent.						(Rev 3-2011)	
Pink - Finance		Blue - Home Unit HE Coordinator		Yellow - Vendor		White - Govt Representative	

12 Hour Shift

EMERGENCY SHIFT TICKET and EVALUATION FORM						Contractor Name	
The responsible Government Officer will complete this form each shift						H2O For You	
Incident or Project Name		Incident Number		Request Number		Operator #1	Operator #2
August Complex West Zone		CAMEU010843		E-89		James Russell	
Agreement Number						Operator Furnished By:	
LNU11111199						<input checked="" type="checkbox"/> Contractor <input type="checkbox"/> Government	
Equipment Make		Equipment Model / Type				Operating Supplies Furnished By:	
Peterbilt		2000 Gallon				<input checked="" type="checkbox"/> Contractor <input type="checkbox"/> Government	
Serial Number		Licence Number				Equipment Status	
11145N		SE653574				<input checked="" type="checkbox"/> Inspected <input type="checkbox"/> Released by Government <input checked="" type="checkbox"/> Under Agreement <input type="checkbox"/> Withdrawn by Contractor	
Equipment Use						Remarks/Comments **	
(Circle) <u>Hours</u> / Days / Miles							
Date	Start	Stop	Work	Assignment			
8/3	0001	0700	7	Off Shift			
8/3	0700	2000	13	Division B			
8/3	2000	2400	4	Off Shift			
Vendor Rating						Govt. Rep. Name and Position - PRINT	
		Poor*	Avg.	Good	Exc.	N/A	
Met Performance Expectations		Vendor Rating must be completed				Govt. Rep. Signature	
Equipment In Safe Working Condition						Steve Hampton, Div B	
Operator Skill Level						Steve Hampton	
Operates Safely						Contractor Signature	
Operator's Cooperation Level						James Russell	
Overall Performance						Date	
* NOTE: Any rating of POOR requires an explanation in Comment Section.						CALFIRE 297	
**Final evaluation or for more documentation, use an ICS Form 230 or equivalent.						(Rev 3-2011)	
Pink - Finance		Blue - Home Unit HE Coordinator		Yellow - Vendor		White - Govt Representative	



PUBLIC INFORMATION SECTION



Incident Information Line:
South Zone (949)433-2638 North Zone (530)628-0039

Status	
Incident Start Date: 7/30/2021	Incident Start Time: 6:00 p.m.
Total acres:	Containment:
Cause: Lightning	Total Personnel:

MEDIA – The California State Penal Code Section 409.5(d) allows the news media to enter scenes of disaster, riot or civil disturbance. Properly identified members of the news media should not be restricted from entering locations specified within the code. However, this does not include crime scenes, private property and does not imply that the news media may interfere with incident operations while they are in the areas of concern. More information can be found [here](#).



CAL FIRE SOCIAL MEDIA POLICY – When assigned to a CAL FIRE incident, you will adhere to the CAL FIRE Social Media Policy, Section 0691. You can find further information about the CAL FIRE Social Media Policy [here](#).



PHOTOGRAPHS AND VIDEOS OF INCIDENT – We are in a new era of media. Media no longer means news/broadcast industry, but now refers to anyone that has the capability to shoot video, photographs and post them onto social media sites in a matter of minutes. Unfortunately, we have seen some instances of photographs or videos that have depicted unsafe, unprofessional or embarrassing circumstances which are a serious breach of ethics. When this happens, it reflects poorly on all that are attached to this incident. Posting an inappropriate video, photo or blog comment could expose oneself to unwanted ramifications. It may be unsafe to shoot photos or video and a firefighter who is concentrating on a camera loses their situational awareness.

The Public Information Office would like copies of the video and pictures that you safely took while not in an emergency situation, fire suppression activity or in an overhead assignment. Bring your video and pictures to the Public Information trailer; they will be reviewed and possibly uploaded to our many CAL FIRE social media sites. Remember, we don't want photographs or videos that depict unsafe, unprofessional or embarrassing circumstances, which are a serious breach of ethics.



LOST AND FOUND – The Information Section will manage lost and found items for the incident.

MAIL SERVICE – The Information Section can assist you with sending and receiving mail.

Anderson Fairgrounds
 ATTN: South Zone Monument Fire Information
 (Your Name)
 1890 Briggs Street
 Anderson, CA 96007

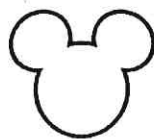
TRAINING MESSAGE

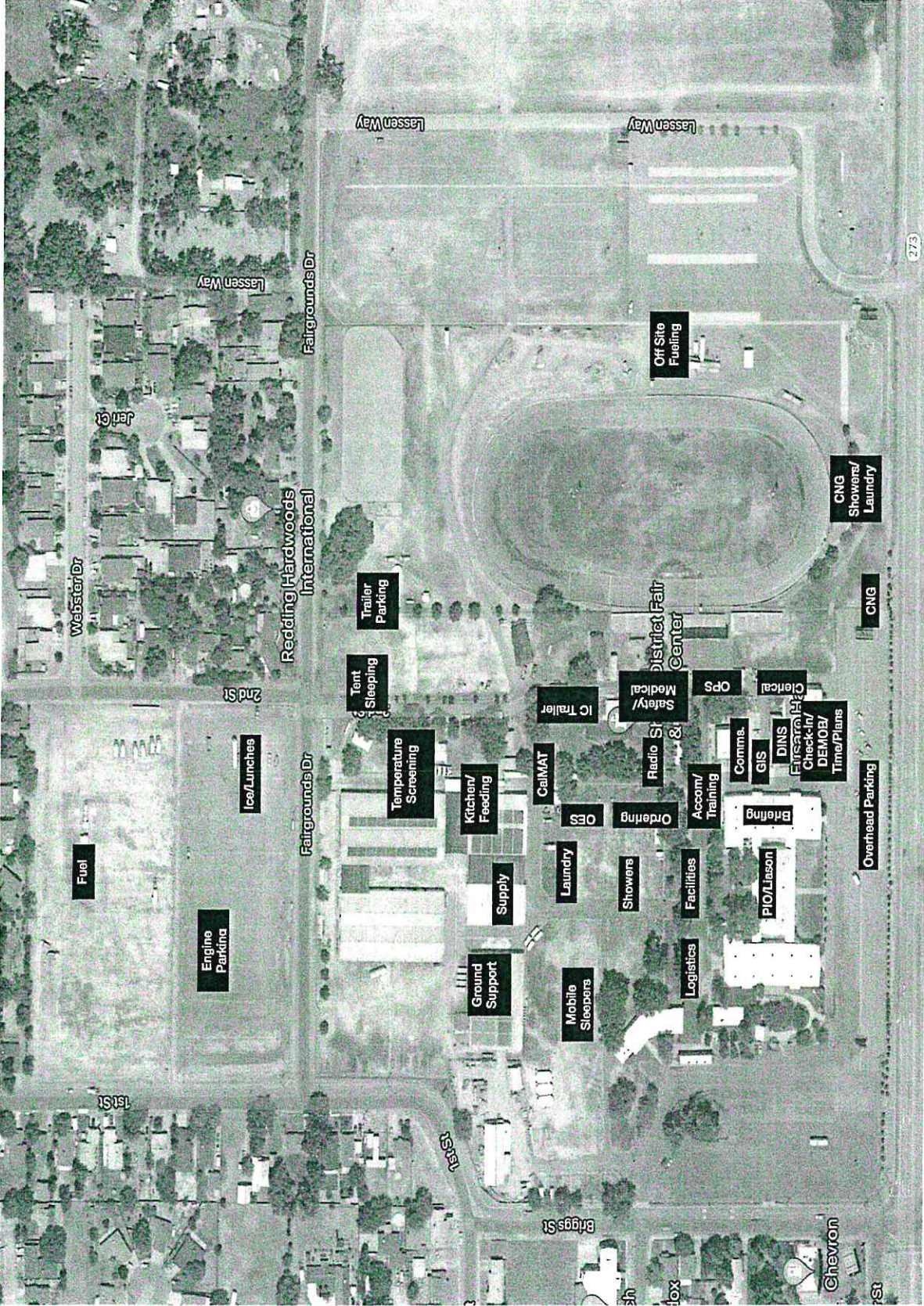
If you have just arrived at The Monument Fire as a Trainee, please don't forget to check in with the Training Specialist.

Do you want credit for this assignment?

Please make sure to check out with Training before you demob

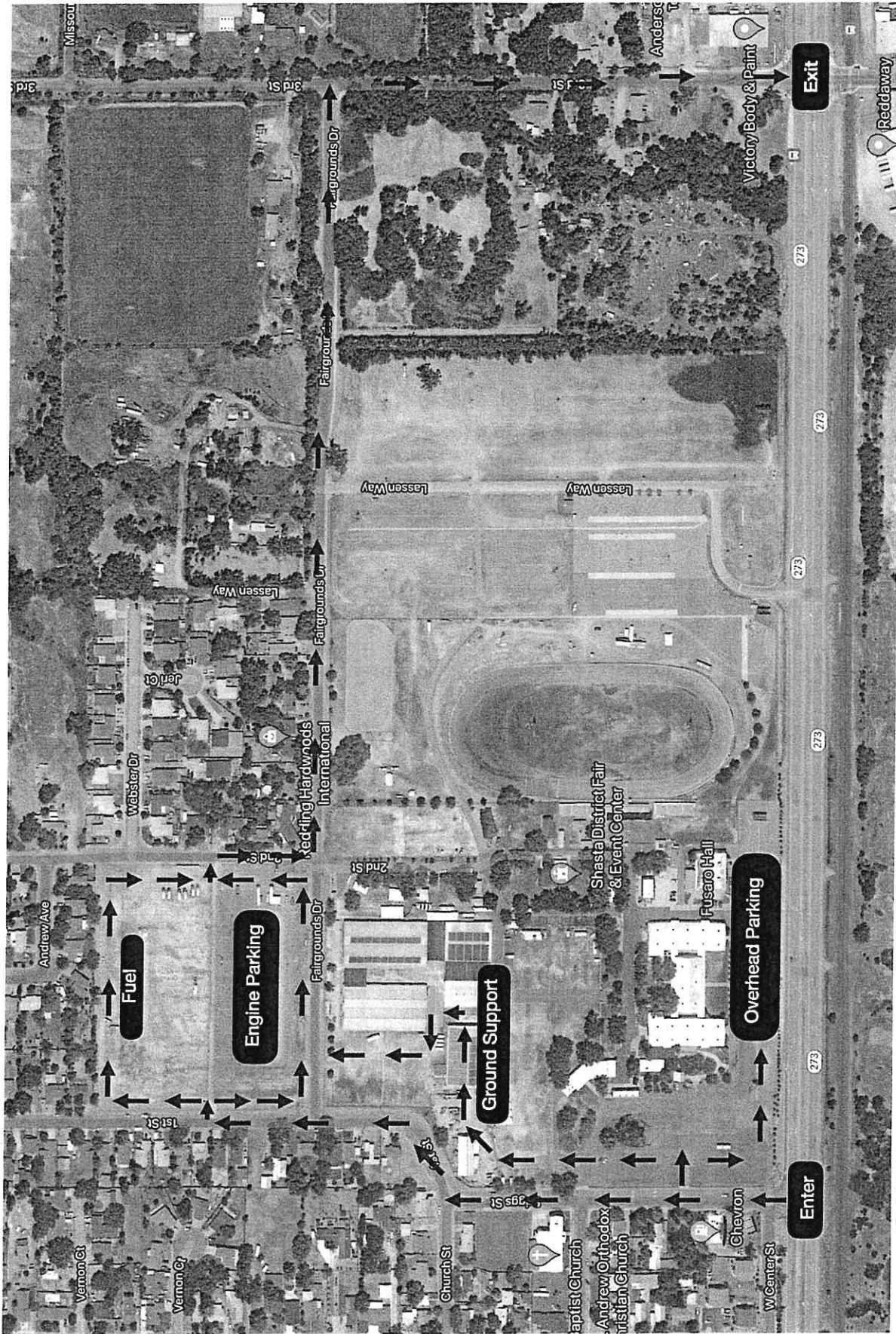
Training is located behind the Briefing Hall
It only takes a few minutes to check in.





MONUMENT FIRE
 ANDERSON FAIRGROUNDS
 FACILITIES MAP
 CA-SHF-001187





MONUMENT FIRE
ANDERSON FAIRGROUNDS
FACILITIES MAP
CA-SHF-001187





Transportation

Monument Fire
 CA-SHF-00187
 0700 - 0700 NAD 83

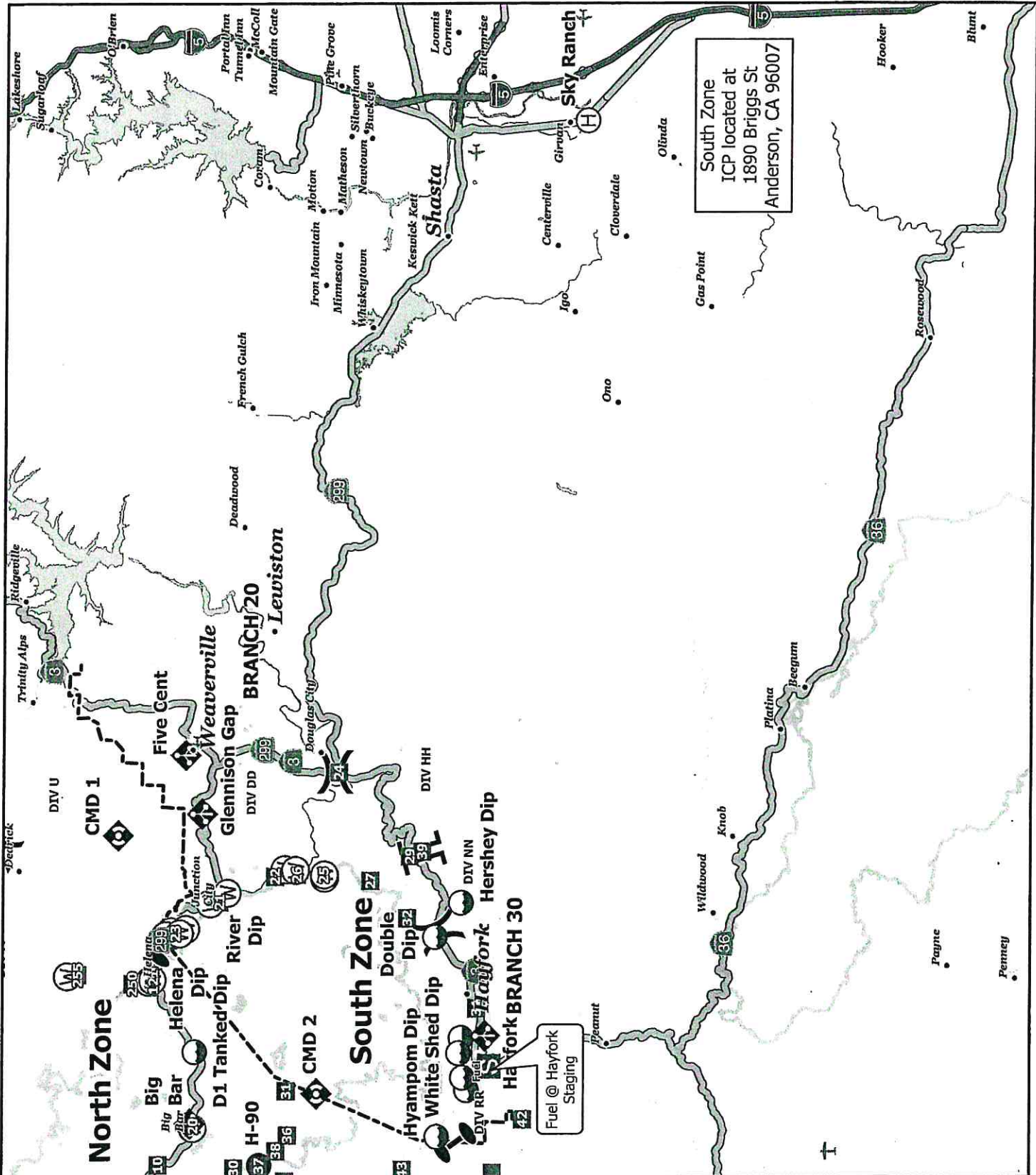
- Dip Site
- Mobile Retardant Base
- Helispot
- Helibase
- ⊕ Division Break
- ⊕ Branch Break
- ⊕ Zone Break
- ⊕ Drop Point
- ⊕ Staging Area
- ⊕ Mobile Weather Unit
- ⊕ Repeater
- ⊕ Water Source
- ⊕ Zone Break
- ⊕ Controlled access
- ⊕ Highway or ramp
- ⊕ Wildfire Fire Perimeter



0 1 2 4 Miles



IMT 5
 9/25/2021
 2:11 PM



South Zone
 ICP located at
 1890 Briggs St
 Anderson, CA 96007



**DEMOBILIZATION PLAN
MONUMENT INCIDENT
CA-SHF-001187**



DEMOB PROCEDURES

- Check the demob list daily. You can find the demob list posted around camp or by utilizing the QR code on your IAP.
- **Please report to demob only at your scheduled time.**
- **Only one person per resource is to report to demob.**
- **Every effort will be made to provide a remote demob.**
- The Demob Unit will provide you with an ICS-221 check-out form.
- For the following units, demob personnel will make radio contact to ensure you are clear for demobilization:
 - Supply Unit
 - Communications Unit
 - Accommodations Unit (If applicable)
- For the following units, you will report in person to complete your check-out:
 - Time Unit
 - Documentation Unit
 - Training Specialist (If applicable)
 - Ground Support Unit
- Return your completed ICS 221 to the Demob Unit and you will be advised of your status (released home, reassigned, etc.)

Greg Barnhart
Demobilization Unit Leader
CAL FIRE Incident Management Team 5

FIRING OPERATION CHECKLIST

Location: _____

Date: _____ Time: _____

Firing Supervisor _____

1. Personnel Briefing

- Objectives
- Conditions (fire environment)
- Resource assignments identified
 - Firing personnel
 - Holding forces
 - Lookouts
- Ignition plan/sequence
- Communication Plan
- Contingency Plan
- Safety issues

2. Go / No-Go

- All personnel briefed
- Weather forecast reviewed
- Resources in place
- Lookouts posted as needed
- Anchor and termination firing points identified
- Communications systems in place
- Fire behavior forecast reviewed
- Escape routes and safety zones established and made known
- Adjoining forces/Air Attack notified

3. Approval Prior To Firing

- Division Supervisor
- Branch Director
- Operations

4. Other Notifications

- Other: _____
- Other: _____

Attach Firing Operations Checklist to ICS-214

Rev 2.8.2011

