

INCIDENT ACTION PLAN MONUMENT FIRE SOUTH ZONE INCIDENT

CA-SHF-001187

Tuesday



OPERATIONAL PERIOD



8/31/2021 0700

to


9/1/2021 0700



North Zone

South Zone

ORGANIZATION ASSIGNMENT LIST (ICS 203)

1. Incident Name: Monument Fire South Zone		2. Operational Period: Date From: 8/31/2021 Time From: 0700		Date To: 9/1/2021 Time To: 0700	
3. Incident Commander(s) and Command Staff:			7. Operation Section:		
IC/UC's	Mike Parkes / Chris Trindade (T)		Operations	Andy Turner	
Deputy	Todd Hopkins		Deputy Operations	Jim Hudson	
Safety Officer	Jack Piccinini / Tim Irwin		Night Ops	Steven Ward	
Information Officer	Scott McLean / K. Haskett (T)		Staging Area		
Liaison Officer	M. Urquides / J. Davis		Branch	20	R. Rynolds (T)
4. Agency/Organization Representatives:			Division/Group	DD / HH	Ryan Pack / Darrell Johnson (T)
Agency/Organization	Name		Division/Group		
Cal Fire SHU	Dan Dennett		Division/Group		
Trinity Sheriffs Office	Bryan Ward		Division/Group		
CHP	Brandon Lale		Division/Group		
SPI	Herb Baldwin		Branch	30	Mark League / Jeff Loveless (T)
PG&E	David Hotchkiss		Division/Group	NN	John Capen
CDCR	Byron Connor		Division/Group	RR	Clint Swensen
CCC	Jose Murillo		Division/Group		
Wildfire Def. System	Ross Fillmore		Division/Group		
OES	Pat Titus		Division/Group		
CNA	Mason Chinowith		Branch	Contingency	Bryan Farrell 12HR
DOT / DIST. 1	Tom Fitzgerald		Division/Group	South Cont 1	Levi Randolph 12HR
DOT / DIST. 2	Eric Akana		Division/Group	South Cont 2	Mike Watner 12HR
			Division/Group		
			Division/Group		
			Division/Group		
			Branch		
			Staging Area	Hayfork	Brandyn Labrue 12HR
5. Planning Section:			Division/Group		
Chief	Ryan Davis / David Wood (T)		Division/Group		
Deputy	Sean Griffis		Division/Group		
Resource Unit	McCarroll / Holliday (T) / Roland (T)		Division/Group		
Situation Unit	SeLegue / Day / Scheeline (T)		Branch		
Documentation Unit	Kim Moore / Vicki Day		Division/Group	FSR	Jed Washburn 12HR
Demobilization Unit	Greg Barnhart		Division/Group		
GISS	Matt Turner		Division/Group		
FBAN	Troy Velin		Division/Group		
IMET	Royce Fontenot		Division/Group		
Training Tech Spec	Morgan Madruga		Air Operations Branch		Director: Niko Matteoli
Hired Equipment Tech Spec.	Danial Hu / Brian Bowman		Air Support Group Supervisor		Josh Faulkner
Crew Tech Spec.			Air Tactical Group Supervisor		
6. Logistics Section			Helibase Manager Gary Engen		
Chief	Tim Fitzgerald				
Supply Unit	Mike Worford		8. Finance/Administration Section:		
Facilities Unit	Heather Thurston / Josh Randol (T)		Chief	Tiffany Tracy	
Ground Support Unit	Steve Langston / Matt Bellows		Time Unit	Matt Rea / Heather Constable (T)	
Communications Unit	Chris Johns		Procurement Unit	Tammy Nolan	
Medical Unit	Josh Staley		Comp/Claims Unit	Bud Sullins	
Motel Unit	Angel Hendrie		Cost Unit	Mike Kennefic	
Food Unit	Steve Chapin				
Prepared By: Name:	David Wood	Position/Title:	PSC	Signature:	
ICS 203		Date/Time:	8/30/2021 2300 hours		



Monument South Zone Fire Weather Forecast



FORECAST NO: 13
PREDICTION FOR: Tue 0700 to Wed 0700
SHIFT DATE: August 31, 2021
FORECAST ISSUED: 2000 PDT August 30, 2021

NAME OF FIRE: Monument Fire
UNIT: SHF
SIGNED: *Royce Fontenot*
 Incident Meteorologist

WEATHER DISCUSSION: A return to more seasonal temperatures is expected today with humidity values falling into the mid-teens. Temperatures and low humidity values will be moderated somewhat in areas of dense smoke. Winds are expected to increase from the west this afternoon with the usual afternoon up canyon push before diminishing and becoming easterly/down canyon overnight. Terrain driven winds may be locally enhanced in areas with partial clearing. Humidity values will begin a slow recovery shortly after sunset in lower elevations and after midnight along ridgetops.

TUESDAY:

WEATHER: Smoke with areas of partial clearing in the afternoon.
MAX TEMPERATURES: 86-90°F full sunshine, 79-84°F elsewhere under smoke.
MIN HUMIDITY: 15-26%, highest values where heavy smoke lingers.
20 FT WINDS: Ridges: W-WNW 4-6 mph increasing to 9-13 mph with occasional gusts to 20 mph by 1500. Higher winds along interior high terrain in Branch 20.
Drainages: Branch 20: W/Up canyon 2-4 mph increasing to 4-8 mph gusts 12 mph by 1500.
Branch 30: W/Up canyon 2-4 mph gusts 6 mph by 1000. Winds increasing 5-9 mph gusts 13 mph by 1200 in Div RR and by 1500 in Div NN.
LAL: 1
CWR: 0%
HAINES INDEX: 4
MIXING HEIGHT: 500 ft AGL increasing to 5,500 ft AGL in the afternoon.
TRANSPORT WIND: W 10-15 mph.

TUESDAY NIGHT:

WEATHER: Smoke, dense at times with low visibility.
MIN TEMPERATURES: 48-58°F, warmest in thermal belts above 1000 feet.
MAX HUMIDITY: Valley 60-70%. Ridges 35-45%
20 FT WINDS: Ridges: W-WNW 8-12 mph with gusts 20 mph becoming 4-8 mph gusts 13 mph by 2200. Winds becoming easterly 2-4 mph by 0300
Drainages: W/Up Canyon winds 4-8 mph with gusts 12 mph becoming 3-5 mph by 2200. Winds becoming E/Down canyon 1-3 mph by 0100
LAL: 1
CWR: 0%
HAINES INDEX: 2
MIXING HEIGHT: 5,500 ft AGL decreasing to 500 ft AGL overnight.
TRANSPORT WIND: WSW 10-15 mph.

Wednesday/Thursday Outlook: Temperatures will cool to more seasonal values through Thursday. Afternoon humidity values will remain in the mid-teens with moderate recoveries. Winds are expected to return to a typical diurnal wind pattern.


RAWS Observations



Submit Observation



FIRE BEHAVIOR FORECAST

FORECAST NUMBER: 14	TYPE OF FIRE: Wildland Fire
FIRE NAME: Monument	OPERATIONAL PERIOD: 24hr 08-31-2021
DATE ISSUED: 08-30-2021	TIME ISSUED: 2100
UNIT: SHU	SIGNED:  Troy Velin - FBAN

INPUTS

WEATHER SUMMARY

Continued Hot and Dry
See Incident Weather Forecast in IAP

FIRE BEHAVIOR:

GENERAL: **Fuels and Fire Behavior Advisory issued 07-17-2021**

Topography is steep and rugged ranging from 2000' in the valleys and 6000' on higher peaks. Slope in many instances is 100%. This terrain promotes fire growth through roll out and slope reversal. Many of the drainages align with predominant wind patterns for the region. The Trinity River corridor is a major drainage that funnels wind primarily East and West. There are major bends in the river that will create eddy's and swirling winds.

Fuels in the fire area range from timber and timber understory in higher elevations, heavy brush in mid elevations and grass oak woodland in valley bottoms. Extreme Drought this year has stressed fuels to critical fuel moistures. 1000 hr fuels recorded July 15 were 7%, LFM in brush is now at 80%. The dryness of the fuels in the area are a major contributor to the Monument Fire's growth.

Fires in this area commonly have large growth periods of 1 to 2 days usually aided by windy conditions. Following the large growth periods there are usually several days of slowed growth due to heavy smoke inversions. This has been the scenario for the Monument Fire. September is generally hot and dry during the day and we begin to see more temperate overnight conditions.

SPECIFIC:

Branch 20

Smoldering fire interior of the line. Monitor for roll out.

Branch 30

DIV NN – Minimal fire behavior under smoke inversion. Monitor Little Barker Creek for fire in the bottom to move up through the drainage with normal upslope winds. Fuels are light within the drainage, but movement is still possible.

DIV RR – In the Little Creek drainage fire along the Sims Gap Ridge in Sections 20, 21 and 29 will back into the drainage from the west. Monitor for rollout and eventual runs back up slope to the ridge. Short high intensity runs will be possible when this happens. As firing continues down the 50 rd ridge towards Hyampom rd expect the mouth of the drainage to pickup some of the Westerly influence and you will see parallel winds with that ridge. Winds aloft will continue to be an avenue for ember to land in the green on the lee side of that ridge system.

South Zone Contingency

Be cautious operating equipment in critically dry fuels.

AIR OPERATION:

Smoke is expected to be over most of the fire area today. Best chance for clearing is DIV RR

SAFETY

The smoke inversion cleared considerably yesterday. As it did, fire behavior increased dramatically in a short space of time. Expect this to happen again today. Clearing beginning by lunch.

Fuels and Fire Behavior Advisory

Northern California

July 17, 2021



Subject: Potential for extreme fire behavior due to critically low live and dead fuel moistures, very dry conditions resulting from persistent drought, minimal snowpack and spring precipitation, and elevated fire danger rating values across much of northern California.

Discussion: Fires burning in northern California are exhibiting extreme fire growth based on critical fuel conditions. Fire spread is fuel driven and does not depend on wind to spread. Surface fuels are very receptive to embers. Long range spotting, area ignition, and group torching is occurring on large fires frequently.

Difference from normal conditions: Northern California is in a drought; currently with 90% at Extreme to Exceptional levels. The drought is expected to persist or intensify throughout the fire season. Deficient rainfall and snowpack with early melt off has resulted in fuels that are 4-6 weeks ahead of normal drying/curing rates.

Concerns to Firefighters and the Public:

- Energy Release Component (ERC) at numerous weather stations set record maximums already this year and are running at or above the 97th percentile in most cases. Expect increased fire intensity and spread rates in these areas. Early season extreme fire behavior has been observed in both light and heavy fuels. **Anticipate increased spread rates, spotting, and active nighttime burning.**
- The combination of persistent drought and record-low rainfall and snowpack amounts has led to very low live and dead fuel moistures. Low 1000-hour fuel moistures have been evidenced by complete consumption of dead fuels on recent fires. Live fuel moistures in grasses, shrubs and trees, have already reached critical levels in many areas of Northern California due to limited green-up this spring. **Expect fires to ignite easier and spread faster. Do not expect fires to exhibit reduced fire behavior when entering areas of live fuels; anticipate increased spread rates and spotting.**
- Direct attack is often not feasible under regular diurnal wind conditions with ground resources. And aviation utilization is often insufficient in moderating rate of spread without immediate heavy ground resource response. **Anticipate higher resistance to control in all fuel types.**
- Already this year, Northern California has experienced large fire activity and multiple team deployments. California will likely experience an extended fire season. It is important to be mindful of and manage fatigue for all resources. **Everyone, every day, returns home safely.**

Mitigation Measures:

- Local and inbound fire personnel need to be aware that fire behavior across the state is exceeding normal expectations for this time of the year. **Local briefings need to be thorough and highlight specific fire environment conditions. These include but are not limited to local weather forecasts, Pocket Cards, ERC's, live and dead fuel moistures.**
- Suppression actions need to be based on good anchor points, escape routes, and safety zones. **Remember LCES. Experienced lookouts are essential under these conditions.**
- Base all actions on current and expected behavior of the fire. **Augment initial attack resources as incident activity dictates.**

Area of Concern: Northern California except for the following Predictive Service Areas: North Coast and Bay Marine, west of Highway 101 in Mid-Coast to Mendocino and Diablo-Santa Cruz, and the north eastern portion of Far Eastside.



**Monument Fire South Zone
HEALTH AND SAFETY MESSAGE**



INCIDENT: Monument – CA SHF-001187

DATE: August 31, 2021

TIME: 0700-0700

**24 HOUR SAFETY EMPHASIS
FIRING OPERATIONS – FATIGUE – COMPLACENCY**

Firing Operations

Watch Out

- Firing plan not communicated down the line
- Go-No-Go check list not followed or communicated
- Poor communications with division resources

Mitigation

- Ensure firing plan is understood by all before implementation
- Ensure Go-No-Go check list is adhered to and communicated up the line
- Confirm correct tactical frequency for firing operation with all personnel involved

Fatigue

Watch Out

- Impaired decision process or driving skills
- Poor physical output and motivation of assigned personnel
- Emotional stressors surfacing in anger or depression

Mitigation

- Spot check and monitor all personnel, ensure proper shade and rest is taking place
- Hydration and Nutrition are keys to energy stores in the body
- Monitor all personnel, ensure mental and physical health with adequate work/rest cycles

Complacency

Watch Out

- Improper or no PPE being used on the fire line
- Lack of awareness to safety or conditions on the fire
- Repeated assignments can lead to complacency making personnel more vulnerable to accidents

Mitigation

- Ensure all necessary PPE is always being utilized when appropriate
- Spot check personnel and reaffirm operational tactics and safety for the assignment
- Reassess usefulness of the personnel and ensure situational awareness is maintained

Each Safety Message is designed for a daily Tailgate Safety discussion

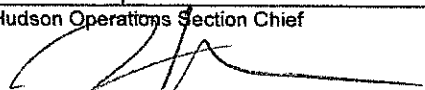
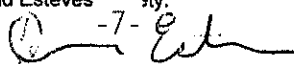
REMAIN FIRE FOCUSED AND COVID-19 AWARE

David Esteves

IMT 5 SAFETY OFFICER



Monument South Zone RISK ANALYSIS (ICS 215a)

DIV	HAZARDOUS ACTIONS/CONDITIONS	MITIGATIONS / WARNINGS / REMEDIES
ALL	FATIGUE/DEHYDRATION	<p>Be alert for signs of fatigue and take breaks as necessary. Monitor incoming resources for level of fatigue. Drink water before, during and after shifts, up to 1.5 gal. per shift. Be alert for signs of heat stress in yourself and others; use the buddy system. Eat small meals often and when possible. Find shade when you can. Drink electrolyte drinks at a 2 water to 1 sport drink ratio.</p>
ALL	HAZARD TREES/TREE FELLING SAFETY	<p>Look up, look down, look around when entering timber. Identify and isolate the area to provide for the safety of others. Flag and make proper notifications. Do not leave incomplete falling operations. Monitor when mopping up. Watch where you park. Size up and mitigate concerns, work within your qualifications.</p>
RR	FIRING OPERATIONS	<p>Have Firing Plan known to all and ensure it is understood before implementation. Ensure Go-No-Go checklist is adhered to and communicated to operations. Confirm correct tactical frequency for firing operation. Communicate start and finish firing times to all personnel.</p>
ALL	COMPLACENCY	<p>Don't underestimate the task at hand. Wear full PPE while on the line. Everyone should be briefed on the conditions and circumstances regarding the fire and their assignments per the IRPG. Today is different than last shift, even if in the same area.</p>
NN/RR	INCREASING FIRE BEHAVIOR	<p>Know your LCES and maintain Situational Awareness. Use experienced Lookouts. Monitor weather for changes in the wind, temp, and RH during the shift. Have a contingency plan with established decision points and safety zones.</p>
ICP Ground Support	GENERAL TRAFFIC	<p>Watch out for pedestrian and vehicle congestion. Provide spotters when backing or driving in tight places. Adhere to the 5-mph speed limit while in base camp.</p>
NN/RR	AIRCRAFT OPERATIONS	<p>Monitor air-to-ground frequency, they are your eyes in the sky. Use air-to-ground frequency to communicate with aircraft. Use clear, concise statements when directing aircraft. Clear the area for incoming water and retardant drops.</p>
NN/RR	HEAVY EQUIPMENT	<p>Watch for rolling material avoid working below heavy equipment. Monitor safe working distances provide adequate working space. Utilize communication with the operators, stop if poor visibility (via radio)</p>
ALL	WEATHER CHANGES	<p>Monitor for increased temperatures on the fireline. Expect erratic winds. Communicate weather changes on the fireline as winds shifts are expected over the next few days</p>
ALL	DRIVING HAZARDS	<p>Complete appropriate DOT daily vehicle inspection. Slow Down! Long travel times to the line, stay alert. Stop if fatigued. Drive defensively and responsibly, not distracted or impaired. Drive with headlights and seatbelts on. Narrow roads with limited passing room. Expect roads to deteriorate over the shift.</p>
ALL	COMMUNICATIONS	<p>Confirm correct tactical and command channel. No unassigned radio channels. Check your Air to Ground to make sure it is correct for your branch. Check your command and tactical frequencies if you have moved branches or divisions. Ensure correct communication with neighboring federal zones.</p>
ALL	COVID 19	<p>Wear a mask when applicable. Utilize hand sanitizer and wash hands frequently. Maintain social distancing. Disinfect apparatus and coolers frequently. Adhere to local, state and federal Covid-19 guidelines. Advise supervisor if you feel sick.</p>
ALL	ENVIRONMENTAL HAZARDS	<p>Maintain situational awareness for illegal activity and hunters. Wash poison oak off hands and clothes. Harvest time in certain areas of the fire. Increase your situational awareness.</p>
Jim Hudson Operations Section Chief 		David Esteves - City: 
		DATE PREPARED: August 31, 2021 Operational Period

ASSIGNMENT LIST (ICS 204 WF)

CONTROLLED UNCLASSIFIED
INFORMATION//BASIC

1. Incident Name: Monument Fire South Zone	2. Operational Period: Date From: 08/31/21 Date To: 09/01/21 Time From: 0700 Time To: 0700	3. Branch Division 20 DD / HH Page 1 of 2 Delta-Delta
---	---	--

4. Operations Personnel:	
Operations Section Chief: Andy Turner	Night Ops: Steven Ward
Branch Director: R. Rynolds (T)	Branch Safety:
Division/Group Supervisor: Ryan Pack / Darrell Johnson (T)	Air Attack:

5. Resources Assigned:		** Resources Below in Bold are 12 Hour **					
Resource Identifier	ALS	LWD	Leader	Personnel	Request #	Hours	Reporting Location
TF MONUMENT 1			Raymond Barber		O-10390	0700-1900	HWY 3 X HWY 299
-ENG MDC 1 E-10376					E-10376	0700-1900	HWY 3 X HWY 299
-ENG LEC R MTN 1 E-10389					E-10389	0700-1900	HWY 3 X HWY 299
-ENG OR IFC E-10392					E-10392	0700-1900	HWY 3 X HWY 299
-ENG PVT INBOUN E-10527					E-10527	0700-1900	HWY 3 X HWY 299
-ENG PVT E320 E-10531					E-10531	0700-1900	HWY 3 X HWY 299
-ENG PVT RTW65 E-10551					E-10551	0700-1900	HWY 3 X HWY 299
-ENG PVT SCHOLL E-10553					E-10553	0700-1900	HWY 3 X HWY 299
ENG PVT ALLIED*			JOHN KNIGHT	3	E-10525	1900-0700	HWY 3 X HWY 299
ENG PVT E29			JAKE PODILLA	3	E-10536	0700-0700	HWY 3 X HWY 299
DOZ PVT E-10100 SIERRAVILLE			CHASE HAUBER	3	E-10100	0700-0700	HWY 3 X HWY 299
DOZ PVT E-10259 DIRECT			KEVIN FOX	2	E-10259	0700-0700	HWY 3 X HWY 299
DOZ PVT 73 SHASTA			ROB STRIEFF	1	E-10305	0700-1900	HWY 3 X HWY 299
W/T PVT E-10115 GRISWOLD			GARY GRISWOLD	2	E-10115	0700-0700	HWY 3 X HWY 299
W/T PVT E-10119 CLASS 1			DARRIN ENOCH	2	E-10119	0700-0700	HWY 3 X HWY 299
W/T PVT E-10123 CNH			JAMES CALDWELL	1	E-10123	0700-1900	HWY 3 X HWY 299
W/T PVT E-10132 GREER			IRA GREER	2	E-10132	0700-0700	HWY 3 X HWY 299
CHIP PVT E-10486 A CUT			JEFF BAKER	2	E-10486	0700-1900	HWY 3 X HWY 299

6. Work Assignments:
Mop up 300ft from control lines.
Fall hazard trees that threaten control lines.
Hold fire within planned control lines.
Backhaul all trash.

7. Special Instructions:
For emergency fueling please work with your division to contact monument fueling on command.
REAF Cynthia Armentrout and REAF Molly Breitmun will be working in this Division.
*ENG PVT ALLIED will be on a night 12hr shift.

8. Communications							
Name	Ch	Function	Rx Freq	Rx Tone	Tx Freq	Tx Tone	Notes
CDF C2	1	COMMAND	151.2650	103.5 (T8)	159.3300	151.4 (T14)	
VFIRE 23	4	TACTICAL	154.2950N	156.7 (T6)	154.2950N	156.7 (T6)	
CDF T25	14	AIR TO GROUND	159.2775	192.8 (T16)	159.2775	192.8 (T16)	A/G TACTICAL
CALCORD	15	MEDICAL	156.0750N	156.7 (T6)	156.0750N	156.7 (T6)	MEDICAL COORDINATION
GUARD 31	16	AIRGUARD	168.6250N		168.6250N	110.9 (T1)	EMERGENCY USE ONLY

9. Prepared by: Name:	Dana McCarroll	RESL	Signature:
ICS 204	Date/Time: 8/30/2021	2200	Personnel Count: 21

ASSIGNMENT LIST (ICS 204 WF)

CONTROLLED UNCLASSIFIED
INFORMATION/BASIC

1. Incident Name: Monument Fire South Zone	2. Operational Period: Date From: 08/31/21 Date To: 09/01/21 Time From: 0700 Time To: 0700	3. Branch Division 30 NN
---	---	---

4. Operations Personnel:		Page 2 of 2 November-November
Operations Section Chief: Andy Turner	Night Ops: Steven Ward	
Branch Director: Mark League / Jeff Loveless (T)	Branch Safety:	
Division/Group Supervisor: John Capen	Air Attack:	

5. Resources Assigned:		** Resources Below in Bold are 12 Hour **						
Resource Identifier	ALS	LWD	Leader	Personnel	Request #	Hours	Reporting Location	
W/T PVT E-10133 PANKEY			CHAD PANKEY	2	E-10133	0700-0700	BARKER CRK X HWY 3	
W/T PVT E-10201 WELLS			JEFF WELLS	1	E-10201	0700-0700	BARKER CRK X HWY 3	
W/T PVT E-10285 SAGE			KAELUN KARMEN	2	E-10285	0700-0700	BARKER CRK X HWY 3	
W/T PVT E-10293 CVR			PAUL CLEAVER	1	E-10293	0700-1900	BARKER CRK X HWY 3	
W/T PVT E-10450 AMERICAN			VINCENT REALI	2	E-10450	0700-0700	BARKER CRK X HWY 3	
FALM PVT BUNDY'S				2	O-10139	0700-1900	BARKER CRK X HWY 3	
FALM PVT HUGHES				2	O-10359	0700-1900	BARKER CRK X HWY 3	
HEQB CRANDALL			KEVIN CRANDALL	1	O-10330	0700-0700	BARKER CRK X HWY 3	
HEQB HUGHES				1		0700-0700	BARKER CRK X HWY 3	
HEQB						0700-0700	BARKER CRK X HWY 3	
HEQB						0700-0700	BARKER CRK X HWY 3	
SOFR CRADOCK			DAVID CRADOCK	1	O-10393	0700-0700	BARKER CRK X HWY 3	
SOFR WILLIAMS						0700-0700	BARKER CRK X HWY 3	
REMS 1 MONRONGO			BEN KRONE	4	O-10033.1	0700-0700	BARKER CRK X HWY 3	

6. Work Assignments:
 Construct contingency line from Maxwell Creek to Hyampom Road.
 Mop up 100'. Cut and improve line where needed.
 Perform Tactical Patrol around structures.
 Backhaul all trash.

7. Special Instructions:
 For emergency fueling please work with your division to contact monument fueling on command.
 REAF Cynthia Armentrout and REAF Molly Breitmun will be working in this Division.


8. Communications

Name	Ch	Function	Rx Freq	Rx Tone	Tx Freq	Tx Tone	Notes
CDF C2	1	COMMAND	151.2650	103.5 (T8)	159.3300	151.4 (T14)	
VFIRE 24	5	TACTICAL	154.2725N	156.7 (T6)	154.2725N	156.7 (T6)	
CDF T25	14	AIR TO GROUND	159.2775	192.8 (T16)	159.2775	192.8 (T16)	A/G TACTICAL
CALCORD	15	MEDICAL	156.0750N	156.7 (T6)	156.0750N	156.7 (T6)	MEDICAL COORDINATION
GUARD 31	16	AIRGUARD	168.6250N		168.6250N	110.9 (T1)	EMERGENCY USE ONLY

9. Prepared by: Name:	Dana McCarroll	RESL	Signature: <i>Dana McCarroll</i>
ICS 204	Date/Time: 8/30/2021	2200	Personnel Count: 19

ASSIGNMENT LIST (ICS 204 WF)

CONTROLLED UNCLASSIFIED
INFORMATION//BASIC

1. Incident Name: Monument Fire South Zone		2. Operational Period: Date From: 08/31/21 Date To: 09/01/21 Time From: 0700 Time To: 0700				3. Branch 30		Division RR	
4. Operations Personnel:						Page 1 of 2		Romeo-Romeo	
Operations Section Chief: Andy Turner					Night Ops: Steven Ward				
Branch Director: Mark League / Jeff Loveless (T)					Branch Safety:				
Division/Group Supervisor: Clint Swensen					Air Attack:				
5. Resources Assigned:		** Resources Below in Bold are 12 Hour **							
Resource Identifier	ALS	LWD	Leader	Personnel	Request #	Hours	Reporting Location		
STA OES 4804A			TAYLOR, JEFF	18	E-10243	0700-0700	CEDAR GULCH		
STC LNU 9141C			JIM CHRISTISON	17	E-10534	0700-0700	CEDAR GULCH		
STC SHU 9242C			TIM WHITEHURST	16	E-10183	0700-0700	CEDAR GULCH		
STC SHU 9246C			GARRET QUIGGLEY	20	E-10181	0700-0700	CEDAR GULCH		
STC RRU 9310C			A. BENNETT	16	E-10078	0700-0700	CEDAR GULCH		
T/F XLF 1341			JIM UNDERWOOD	17	E-10355	0700-0700	CEDAR GULCH		
ENG XTR HYF 3161			LEROY	2	E-10350	0700-0700	CEDAR GULCH		
ENG PVT NM 805			BRETT BOWER	1	E-10307	0700-1900	CEDAR GULCH		
ENG BRS 464			BRAD BOLTON	3	E-10507	0700-1900	CEDAR GULCH		
ENG BIA 441			DERRICK TINNO	3	E-10508	0700-1900	CEDAR GULCH		
ENG GBF 69			DAVIS GRASS	3	E-10552	0700-1900	CEDAR GULCH		
STG LNU 9147G			JOSH LAW	36	C-10012	0700-0700	CEDAR GULCH		
STG SHU 9240G CNA			MASON CHENOWITH	38	C-10006	0700-0700	CEDAR GULCH		
STG TGU 9254G			JASON LONG	32	C-10014	0700-0700	CEDAR GULCH		
STG BDU 9351G			JOSEPH HATCH	32	C-10004	0700-0700	CEDAR GULCH		
STG						0700-0700	CEDAR GULCH		
CRW LNU DELTA 3			JASE INDREBO	15	C-10010	0700-0700	CEDAR GULCH		
DOZ NEU 2340			KATY MCMANUS	2	E-10164	0700-0700	CEDAR GULCH		
6. Work Assignments:									
Construct control lines as direct as possible.									
Improve direct fire line. Mop up 300' in from control line.									
Fall hazard trees and trees that threaten control lines.									
Backhaul all trash.									
7. Special Instructions:									
For emergency fueling please work with your Division to contact Mounument fueling on command.									
Roads are becoming soft please stay on the high side of the road.									
REAF Forest Coots, ARCH Allison Young and REAF Anna Young will be working in Branch 30 Division RR.									
8. Communications									
Name	Ch	Function	Rx Freq	Rx Tone	Tx Freq	Tx Tone	Notes		
CDF C2	1	COMMAND	151.2650	103.5 (T8)	159.3300	151.4 (T14)			
CDF C11 (T11)	3	COMMAND	151.1675	103.5 (T8)	159.3975	114.8 (T11)	FOR RR ONLY		
CDF T25	14	AIR TO GROUND	159.2775	192.8 (T16)	159.2775	192.8 (T16)	A/G TACTICAL		
CALCORD	15	MEDICAL	156.0750N	156.7 (T6)	156.0750N	156.7 (T6)	MEDICAL COORDINATION		
GUARD 31	16	AIRGUARD	168.6250N		168.6250N	110.9 (T1)	EMERGENCY USE ONLY		
9. Prepared by: Name: Dana McCarroll RESL									
Signature: 									
ICS 204		Date/Time: 8/30/2021 2200				Personnel Count: 271			

ASSIGNMENT LIST (ICS 204 WF)

CONTROLLED UNCLASSIFIED
INFORMATION//BASIC

1. Incident Name: Monument Fire South Zone	2. Operational Period: Date From: 08/31/21 Date To: 09/01/21 Time From: 0700 Time To: 0700	3. Branch Division 30 RR
---	---	---

4. Operations Personnel:		Page 2 of 2 Romeo-Romeo
Operations Section Chief: Andy Turner	Night Ops: Steven Ward	
Branch Director: Mark League / Jeff Loveless (T)	Branch Safety:	
Division/Group Supervisor: Clint Swensen	Air Attack:	

5. Resources Assigned:	** Resources Below in Bold are 12 Hour **						
Resource Identifier	ALS	LWD	Leader	Personnel	Request #	Hours	Reporting Location
DOZ MVU 3345			MARTY ADAMS	2	E-10543	0700-0700	CEDAR GULCH
DOZ PVT E-10090 T & S			SEBASTIAN MAYNARD	2	E-10090	0700-0700	CEDAR GULCH
DOZ PVT E-10097 JOHNSON			MATT JOHNSON	2	E-10097	0700-0700	CEDAR GULCH
DOZ PVT E-10104 A&CC			CLYTON MOORE	2	E-10104	0700-0700	CEDAR GULCH
W/T - HYF 3141			LEROY	2	E-10349	0700-0700	CEDAR GULCH
W/T PVT E-10006 BURGESS			DAVID BURGESS	1	E-10006	0700-0700	CEDAR GULCH
W/T PVT E-10011 HARRIS			JOHN ZAUBIRER	1	E-10011	0700-1900	CEDAR GULCH
W/T PVT E-10116 5 STAR			ASA BENNETT	1	E-10116	0700-0700	CEDAR GULCH
W/T PVT E-10118 DUNLAP			DAVID POLE	2	E-10118	0700-0700	CEDAR GULCH
W/T PVT E-10120 CLASS 1			CRAIG TARELLO	1	E-10120	0700-1900	CEDAR GULCH
W/T PVT E-10122 FIRE WATER			DANA CLEER	1	E-10122	0700-1900	CEDAR GULCH
W/T PVT E-10129 GASSAWAY			JULIO LOPEZ	2	E-10129	0700-0700	CEDAR GULCH
FALM PVT CTS VENTURES				2	O-10358	0700-1900	CEDAR GULCH
FALM PVT CAL VEG				1	O-10360	0700-1900	CEDAR GULCH
FALM						0700-1900	CEDAR GULCH
SOFR SOLAK			JASON SOLAK		O-10394	0700-0700	CEDAR GULCH
SOFR MARGIOTT			KEN MARGIOTT	1	O-10376	0700-0700	CEDAR GULCH
REMS 5 HIGH PRIORITY				1	O-10035	0700-0700	CEDAR GULCH

6. Work Assignments:
 Construct control lines as direct as possible.
 Improve direct fire line. Mop up 300' in from control line.
 Fall hazard trees and trees that threaten control lines.
 Backhaul all trash.

7. Special Instructions:
 For emergency fueling please work with your Division to contact Mounument fueling on command.
 Roads are becoming soft please stay on the high side of the road.
 REAF Forest Coots and Arch Allison young will be working in Branch 30 Division RR.

8. Communications

Name	Ch	Function	Rx Freq	Rx Tone	Tx Freq	Tx Tone	Notes
CDF C2	1	COMMAND	151.2650	103.5 (T8)	159.3300	151.4 (T14)	
CDF C11 (T11)	3	COMMAND	151.1675	103.5 (T8)	159.3975	114.8 (T11)	FOR RR ONLY
CDF T25	14	AIR TO GROUND	159.2775	192.8 (T16)	159.2775	192.8 (T16)	A/G TACTICAL
CALCORD	15	MEDICAL	156.0750N	156.7 (T6)	156.0750N	156.7 (T6)	MEDICAL COORDINATION
GUARD 31	16	AIRGUARD	168.6250N		168.6250N	110.9 (T1)	EMERGENCY USE ONLY

9. Prepared by: Name: Dana McCarroll RESL Signature: *Dana McCarroll*

ICS 204 Date/Time: 8/30/2021 2200 Personnel Count: 24

ASSIGNMENT LIST (ICS 204 WF)

CONTROLLED UNCLASSIFIED
INFORMATION//BASIC

1. Incident Name: Monument Fire South Zone	2. Operational Period: Date From: 08/31/21 Date To: 09/01/21 Time From: 0700 Time To: 0700	3. Branch Division Contingency South Cont 1
4. Operations Personnel:		Page 1 of 1

Operations Section Chief: Andy Turner	Night Ops: Steven Ward
Branch Director: Bryan Farrell 12HR	Branch Safety:
Division/Group Supervisor: Levi Randolph 12HR	Air Attack:

5. Resources Assigned:	** Resources Below in Bold are 12 Hour **						
Resource Identifier	ALS	LWD	Leader	Personnel	Request #	Hours	Reporting Location
ENG J3 CONTRACTING			SHAWN MODICA	3	E-10308	0700-1900	ICP
DOZ PVT E-10095 MN MILLER			LELLO MARTINEZ	2	E-10095	0700-0700	ICP
DOZ PVT E-10099 MULLER			CHARLES MULLER	2	E-10099	0700-0700	ICP
DOZ PVT E-10106 K5 RANCH			JAMES KLAUER	2	E-10106	0700-0700	ICP
DOZ PVT E-10107 K5 RANCH			MITCH GILS	2	E-10107	0700-0700	ICP
DOZ PVT E-10109 PEARSON			JIMMY LUST	2	E-10109	0700-0700	ICP
DOZ PVT E-10110 LEWIS			TYLER LEWIS	2	E-10110	0700-1900	ICP
DOZ						0700-0700	ICP
DOZ						0700-0700	ICP
DOZ						0700-0700	ICP
DOZ						0700-0700	ICP
W/T PVT E-10131 PALMER			STANLEY MIRANDA	1	E-10131	0700-1900	ICP
W/T PVT E-10276 D&G			GARY BROCK	2	E-10276	0700-0700	ICP
MAST PVT E-10156 STONE FLY			MICHAEL PURENI	1	E-10156	0700-1900	ICP
FELB						0700-1900	ICP
FELB						0700-1900	ICP
FALM PVT TREEWORX				1	O-10136	0700-1900	ICP
FALM PVT KLEE TREE			JASON KLEE	2	O-10138	0700-1900	ICP
HEQB POBURKO			JASON POBURKO	1		0700-1900	ICP

6. Work Assignments:
 Contract contingency line from Sims Gap to NE quarter of section 33.
 Fall hazard trees that will threaten control lines.
 Fall hazard trees.
 Improve contingency line previously completed.

7. Special Instructions:
 REAF Andrew Christie and REAF Rudy Uribe will be working in this Division.

8. Communications

Name	Ch	Function	Rx Freq	Rx Tone	Tx Freq	Tx Tone	Notes
CDF C2	1	COMMAND	151.2650	103.5 (T8)	159.3300	151.4 (T14)	
CDF T27	7	TACTICAL	159.3075N	192.8 (T16)	159.3075N	192.8 (T16)	
CDF T25	14	AIR TO GROUND	159.2775	192.8 (T16)	159.2775	192.8 (T16)	A/G TACTICAL
CALCORD	15	MEDICAL	156.0750N	156.7 (T6)	156.0750N	156.7 (T6)	MEDICAL COORDINATION
GUARD 31	16	AIRGUARD	168.6250N		168.6250N	110.9 (T1)	EMERGENCY USE ONLY

9. Prepared by: Name:	Dana McCarroll	RESL	Signature:
ICS 204	Date/Time: 8/30/2021 2200		Personnel Count: 23

ASSIGNMENT LIST (ICS 204 WF)

CONTROLLED UNCLASSIFIED
INFORMATION//BASIC

1. Incident Name: Monument Fire South Zone	2. Operational Period: Date From: 08/31/21 Date To: 09/01/21 Time From: 0700 Time To: 0700	3. Branch Division Contingency South Cont 2
---	---	--

4. Operations Personnel:		Page 1 of 1
Operations Section Chief: Andy Turner	Night Ops: Steven Ward	
Branch Director: Bryan Farrell 12HR	Branch Safety:	
Division/Group Supervisor: Mike Watner 12HR	Air Attack:	

5. Resources Assigned:	** Resources Below in Bold are 12 Hour **							
Resource Identifier	ALS	LWD	Leader	Personnel	Request #	Hours	Reporting Location	
DOZ MEU 1145			MATT WILSON	4	E-10548	0700-0700	TC FAIRGROUNDS	
DOZ PVT E-10094 MARSH			DAN MARSH	4	E-10094	0700-0700	TC FAIRGROUNDS	
DOZ PVT E-10102 CHUCK FRY			CHUCK FRY	2	E-10102	0700-0700	TC FAIRGROUNDS	
DOZ PVT E-10103 MEEKER			JONATHAN MEEKER	2	E-10103	0700-0700	TC FAIRGROUNDS	
DOZ PVT E-10105 PHELAN			JAROD WELLS	1	E-10105	1900-0700	TC FAIRGROUNDS	
DOZ PVT E-10108 SAGE			CARMEN, Kaelum	4	E-10108	0700-0700	TC FAIRGROUNDS	
DOZ PVT E-10111 HERMAN			LARRY HERMAN	3	E-10111	0700-0700	TC FAIRGROUNDS	
DOZ PVT E-10174 COTTON			MIKE STAHEL	2	E-10174	0700-0700	TC FAIRGROUNDS	
W/T PVT E-10005 JOHNSON			DAVE LAMAR	1	E-10005	0700-1900	TC FAIRGROUNDS	
W/T PVT E-10289 Act Fast			ANGELO CATTANEO	1	E-10289	0700-1900	TC FAIRGROUNDS	
MAST PVT E-10368 JOHNS			VIRGIL JOHNS	1	E-10368	0700-1900	TC FAIRGROUNDS	
MAST PVT E-10437 SUNRISE			BRANDON WILLIAMS	2	E-10437	0700-1900	TC FAIRGROUNDS	
FELB						0700-1900	TC FAIRGROUNDS	
FELB						0700-1900	TC FAIRGROUNDS	
SKID						0700-1900	TC FAIRGROUNDS	
FALM PVT NIGHT FIRE			ANDREW DUROCHER	1	O-10137	0700-1900	TC FAIRGROUNDS	
FALM PVT GARTH FOSTER			GARTH FOSTER	1	O-10140	0700-1900	TC FAIRGROUNDS	
HEQB						0700-0700	TC FAIRGROUNDS	

Construct contingency line.
Plan secondary control lines, begin if possible.
Fall hazard trees.
Construct safety islands.

7. Special Instructions:
REAF Andrew Christie and REAF Rudy Uribe will be working in this Division

3. Communications							
Name	Ch	Function	Rx Freq	Rx Tone	Tx Freq	Tx Tone	Notes
PDF C2	1	COMMAND	151.2650	103.5 (T8)	159.3300	151.4 (T14)	
PDF T28	8	TACTICAL	151.1825	192.8 (T16)	151.1825	192.8 (T16)	
PDF T25	14	AIR TO GROUND	159.2775	192.8 (T16)	159.2775	192.8 (T16)	AG TACTICAL
CALCORD	15	MEDICAL	156.0750N	156.7 (T6)	156.0750N	156.7 (T6)	MEDICAL COORDINATION
GUARD 31	16	AIRGUARD	168.6250N		168.6250N	110.9 (T1)	EMERGENCY USE ONLY

1. Prepared by: Name: Dana McCarroll RESL Signature: *Dana McCarroll*

CS 204 Date/Time: 8/30/2021 2200 Personnel Count: 29

ASSIGNMENT LIST (ICS 204 WF)

CONTROLLED UNCLASSIFIED
INFORMATION//BASIC

1. Incident Name: Monument Fire South Zone	2. Operational Period: Date From: 08/31/21 Date To: 09/01/21 Time From: 0700 Time To: 0700	3. Branch Division FSR
4. Operations Personnel:		Page 1 of 1

Operations Section Chief: Andy Turner	Night Ops: Steven Ward
Branch Director:	Branch Safety:
Division/Group Supervisor: Jed Washburn 12HR	Air Attack:

5. Resources Assigned:	** Resources Below in Bold are 12 Hour **						
Resource Identifier	ALS	LWD	Leader	Personnel	Request #	Hours	Reporting Location
DOZ PVT E-10112 DAVIS			LELAND DAVIS	1	E-10112	0700-1900	
DOZ PVT E-10438 PACKWAY			RICHARD HATHAWAY	3	E-10438	0700-1900	
DOZ PVT E-10439 SCHREDER			CORY HALL	4	E-10439	0700-1900	
DOZ PVT E-10440 SUNRISE			JOHN WILLIAMS	2	E-10440	0700-1900	
W/T PVT E-10124 IGRAM			RYAN GRABLE	1	E-10124	0700-1900	
W/T PVT E-10126 BURTON			LARRY BURTON	1	E-10126	0700-1900	
W/T PVT E-10128 ON SITE			RICK WALTON	1	E-10128	0700-1900	
W/T PVT E-10281 CONCRETE			SCOTT HEAD	2	E-10281	0700-1900	
W/T PVT E-10452 CSURE			RON LANDSBURG	2	E-10452	0700-1900	
MAST PVT E-10356 RJW			WADE FIELDS	1	E-10356	0700-1900	
MAST PVT E-10357 RJW			WADE FIELDS	1	E-10357	0700-1900	
EXC PVT E-10446 TWO BRO'S			STEVE CLARK	1	E-10446	0700-1900	
MAST PVT E-10454 INGRAM			MARK ESCALERA	2	E-10454	0700-1900	
EXC PVT E10484 WALBERG			BRIAN BELOIT	1	E-10484	0700-1900	
CHIP PVT E-10485 BUNDY			JUSTIN GARRET	2	E-10485	0700-1900	

6. Work Assignments:
Conduct Fire Suppression Repair operations as directed by the FSR Division.

7. Special Instructions:

8. Communications							
Name	Ch	Function	Rx Freq	Rx Tone	Tx Freq	Tx Tone	Notes
CDF C2	1	COMMAND	151.2650	103.5 (T8)	159.3300	151.4 (T14)	
CDF T15	9	TACTICAL	159.2700	192.8 (T16)	159.2700	192.8 (T16)	
CDF T25	14	AIR TO GROUND	159.2775	192.8 (T16)	159.2775	192.8 (T16)	AVG TACTICAL
CALCORD	15	MEDICAL	156.0750N	156.7 (T6)	156.0750N	156.7 (T6)	MEDICAL COORDINATION
GUARD 31	16	AIRGUARD	168.6250N		168.6250N	110.9 (T1)	EMERGENCY USE ONLY

9. Prepared by: Name: Dana McCarroll RESL Signature: *Dana McCarroll*

ICS 204 Date/Time: 8/30/2021 2200 Personnel Count: 25

ASSIGNMENT LIST (ICS 204 WF)

CONTROLLED UNCLASSIFIED
INFORMATION//BASIC

1. Incident Name: <p style="text-align: center; font-weight: bold;">MONUMENT FIRE</p>		2. Operational Period: Date From: 08/31/21 Date To: 09/01/21 Time From: 0700 Time To: 0700				3. Branch Division <p style="text-align: center; font-size: 2em; font-weight: bold;">X U</p>	
4. Operations Personnel: Operations Section Chief: Don Fregulia Branch Director: Kim Olson Division/Group Supervisor: Jimmy Hidalgo					Night Ops: Corey Rose, Jesse Knox(T) Branch Safety: Air Attack:		
5. Resources Assigned:		** Resources Below in Bold are 12 Hour **					
Resource Identifier	ALS	LWD	Leader	Personnel	Request #	Hours	Reporting Location
HC1 LEWIS & CLARK IHC		9/10	NICK WYDRE	21	C-118	0700-1900	Weaverville Camp
HC2IA FIRESTORM 15A		9/3	BEN PAVAN	20	C-5	0700-1900	Weaverville Camp
HC2 PVT R&R CONTRACTING 99		9/5	ASUBENE AGUILERA	20	C-99	0700-1900	Weaverville Camp
SMOD DENVER SUPPRESSION		9/12		11	O-828	0700-1900	Weaverville Camp
WFM1 BLACK TOOTH WFM		9/11	CONNOR ERICKSON	10	O-830	0700-1900	Weaverville Camp
ENG3 JUNCTION CITY 2531		9/4	JUSTIN KERWICK	3	E-44	0700-1900	Weaverville Camp
ENG3 JUNCTION CITY 2533		9/3	JASON DARDON	3	E-381	0700-1900	Weaverville Camp
ENG3 PVT BLACK RANGE ENTERPRISES		9/20	TIMOTHY PEARSON	3	E-674	0700-1900	Weaverville Camp
ENG6 PVT BLAZE RUNNER 06		9/21	JOHN VINCENT	3	E-595	0700-1900	Weaverville Camp
DOZ2 PVT BUD GARMAN CONSTRUCTION		9/9	JEREMY SNEED	1	E-632	0700-1900	Weaverville Camp
DOZ3 PVT C M CONSTRUCTION		9/7	STEVEN EDSALL	2	E-481	0700-1900	Weaverville Camp
WTT1 ROCK CREEK		9/2	TIM DANIEL	2	E-80	0700-1900	Weaverville Camp
WTS2 FORTNER EXCAVATION 24		9/11	DANIEL JONES	1	E-24	0700-1900	Weaverville Camp
WTS2 GLENN'S TENS EQUIPMENT		9/11	ROBERT MESSNER	1	E-638	0700-1900	Weaverville Camp
WTS2 PVT K.K.'S WATER SERVICE		8/31	ZACH SHINKLE	1	E-688	0700-1900	Weaverville Camp
FALM PVT REDWOOD EMPIRE		9/6	JESSE GONZALEZ	2	O-86	0700-1900	Weaverville Camp
MAST PVT HIGH POWER ENTERPRISES		9/9	MARSHALL COX	2	E-486	0700-1900	Weaverville Camp
SKG2 LET-ER-BUCK 385		9/9	DAREN WARD	2	E-385	0700-1900	Weaverville Camp
6. Work Assignments: - Keep the fire west of the North Fork of the Trinity River. - Continue prep on Hobo Gulch Road, Backbone Ridge Trail and Contingency line between East Fork Road and Canyon Creek Road. - Maintain a presence on Hwy. 299 and Dutch Creek Road. - Support CAL FIRE Division DD with any needs.							
7. Special Instructions:							
8. Communications							
Name	Ch	Function	Rx Freq	Rx Tone	Tx Freq	Tx Tone	Notes
CMD 1	1	COMMAND	173.8125N	107.2	168.4750N	107.2	CMD Located on Weaver Bally
TAC 6	6	TACTICAL	168.0500N	107.2	168.0500N	107.2	
A/G CMD	12	A/G CMD	171.8625N		171.8625N		Incident A/G Command
CALCORD	15	MEDICAL	156.0750N	156.7	156.0750N	156.7	(TONE 6)
GUARD	16	AIRGUARD	168.6250N		168.6250N	110.9	EMERGENCY HAILING OF AIRCRAFT
9. Prepared by: Name:		Ryan Resnick, Harry Kelmanson, Marisa Williams(T), Kelly Smyth(T) John Hunter (T)			RESL	Signature: _____	
ICS 204		Date/Time: 8/30/2021 2200		Personnel Count: 108			

ASSIGNMENT LIST (ICS 204 WF)

CONTROLLED UNCLASSIFIED
INFORMATION/BASIC

1. Incident Name: <p style="text-align: center; font-weight: bold;">MONUMENT FIRE</p>	2. Operational Period: Date From: 08/31/21 Date To: 09/01/21 Time From: 0700 Time To: 0700	3. Branch Division <p style="text-align: center; font-size: 2em; font-weight: bold;">X U</p>
---	---	--

4. Operations Personnel: Operations Section Chief: Don Fregulia Branch Director: Kim Olson Division/Group Supervisor: Jimmy Hidalgo	Night Ops: Corey Rose, Jesse Knox(T) Branch Safety: Air Attack:
--	--

5. Resources Assigned:	** Resources Below in Bold are 12 Hour **						
Resource Identifier	ALS	LWD	Leader	Personnel	Request #	Hours	Reporting Location
PVT PUMPZILLA 2 TI		9/8	JOHN VELEZ	2	S-21	0700-1900	Weaverville Camp
TFLD FINNEGAN		9/3	BRENDAN FINNEGAN	1	O-646	0700-1900	Weaverville Camp
HEQB CORDTZ		8/31	ERIK CORDTZ	1	O-262	0700-1900	Weaverville Camp
FELB(T) DUNCAN		9/11	JARED DUNCAN	1	O-806	0700-1900	Weaverville Camp
REMS2 ADVENTURE MEDICS 93	X	9/4	BENNETT	4	O-93	0700-1900	Weaverville Camp
EMPF GILMORE	X	9/10	CODY GILMORE	1	O-781	0700-1900	Weaverville Camp
REAF RADEMACHER		9/1	ERIK RADEMACHER	1	O-57	0700-1900	Weaverville Camp
REAF BARTZOKIS		9/2	KATHERINE BARTZOKIS	1	O-453	0700-1900	Weaverville Camp
ARCH SHAHEEN-MCCONNELL		9/8	EO SHAHEEN-MCCONNE	1	O-624	0700-1900	Weaverville Camp
REAF MCFADIN		9/11	MICHAEL MCFADIN	1	O-857	0700-1900	Weaverville Camp

6. Work Assignments:

- Keep the fire west of the North Fork of the Trinity River.
- Continue prep on Hobo Gulch Road, Backbone Ridge Trail and Contingency line between East Fork Road and Canyon Creek Road.
- Maintain a presence on Hwy. 299 and Dutch Creek Road.
- Support CAL FIRE Division DD with any needs.

7. Special Instructions:

8. Communications							
Name	Ch	Function	Rx Freq	Rx Tone	Tx Freq	Tx Tone	Notes
CMD 1	1	COMMAND	173.8125N	107.2	168.4750N	107.2	CMD Located on Weaver Bally
TAC 6	6	TACTICAL	168.0500N	107.2	168.0500N	107.2	
A/G CMD	12	A/G CMD	171.8625N		171.8625N		Incident A/G Command
CALCORD	15	MEDICAL	156.0750N	156.7	156.0750N	156.7	(TONE 6)
GUARD	16	AIRGUARD	168.6250N		168.6250N	110.9	EMERGENCY HAILING OF AIRCRAFT

9. Prepared by: Name: Ryan Resnick, Harry Kelmanson, Marisa Williams(T), Kelly Smyth(T), John Hunter (T) RESL Signature: _____

ICS 204 Date/Time: 8/30/2021 2200 Personnel Count: 14

ASSIGNMENT LIST (ICS 204 WF)

CONTROLLED UNCLASSIFIED
INFORMATION//BASIC

1. Incident Name: MONUMENT FIRE		2. Operational Period: Date From: 08/31/21 Date To: 09/01/21 Time From: 0700 Time To: 0700			3. Branch Division XL W Page 1 of 2 Whiskey		
4. Operations Personnel: Operations Section Chief: Don Fregulia Branch Director: Gary Monday Division/Group Supervisor: Tim Ritchey, Logan Ballesteros(T)				Night Ops: Corey Rose, Jesse Knox(T) Branch Safety: Air Attack:			
5. Resources Assigned:		** Resources Below in Bold are 12 Hour **					
Resource Identifier	ALS	LWD	Leader	Personnel	Request #	Hours	Reporting Location
HC1 IDAHO CITY IHC		9/11	BRIAN CORDOZA	20	C-119	0700-1900	Bar 717
HC2 FRANCO REFORESTATION		9/8	ALBERTO FRANCO-QUEVDO	20	C-116	0700-1900	Bar 717
ENG3 MNF 352		9/4	MATHEW DAVIS	5	E-776	0700-1900	Weaverville Camp
ENG3 CORTEZ FPD E23		9/11	BRAD FINCH	3	E-788	0700-1900	Weaverville Camp
ENG6 ROCK SPRINGS E463		9/6	JASON CRISTANELLI	3	E-828	0700-1900	Weaverville Camp
ENG6 PVT PEANUT PIE		9/6	WADE VISSER	3	E-662	0700-1900	Weaverville Camp
ENG6 PVT TIMBER RIDGE FIRE LLC		9/8	JEFF TODD	3	E-664	0700-1900	Weaverville Camp
ENG6 PVT LOOMIS FIRE		9/8	JAMES DEGEN	3	E-669	0700-1900	Weaverville Camp
ENG6 PVT ALTERGOTT FORESTRY		9/6	MARCIE MOORE	3	E-666	0700-1900	Weaverville Camp
DOZ3 PVT DIRT WORKS UNLIMITED		9/7	TIM PAULEY	1	E-480	0700-1900	Bar 717
DOZ3 PVT ALVORD		9/7	MATT DAVIS	2	E-478	0700-1900	Weaverville Camp
WTS2 PVT CRAIG MARTIN		9/7	CRAIG MARTIN	1	E-636	0700-1900	Weaverville Camp
FALM PVT CHARLIE FALLERS		9/9	TACOMA MANUEL	2	O-785	0700-1900	Weaverville Camp
CHIP2 PVT RAPID RESPONSE		9/9	EVER SANDOVAL	3	E-716	0700-1900	Weaverville Camp
CHIP2 CTS VENTURES		9/10	SONJA CYRUS	3	E-717	0700-1900	Weaverville Camp
TFLD HYATT		9/4	TODD HYATT	1	O-653	0700-1900	Weaverville Camp
EMPF RAYMOND		9/11	JENNIFER RAYMOND	1	O-850.1	0700-1900	Weaverville Camp
EMTF ISON		9/11	TY ISON	1	O-850.2	0700-1900	Weaverville Camp
6. Work Assignments: - Monitor the fire's edge at zone break. - Continue prep on Hyampom Road from the Zone break to DP 45. - Identify check lines on Hyampom Road from Zone break to DP 45.							
7. Special Instructions:							
8. Communications							
Name	Ch	Function	Rx Freq	Rx Tone	Tx Freq	Tx Tone	Notes
CMD 2	2	COMMAND	171.5375N	107.2	164.8625N	107.2	CMD located On Hayfork Bally
TAC 8	8	TACTICAL	166.7250N	107.2	166.7250N	107.2	
A/G CMD	12	A/G CMD	171.8625N		171.8625N		Incident A/G Command
CALCORD	15	MEDICAL	156.0750N	156.7	156.0750N	156.7	(TONE 6)
GUARD	16	AIRGUARD	168.6250N		168.6250N	110.9	EMERGENCY HAILING OF AIRCRAFT
9. Prepared by: Name: Ryan Resnick, Harry Kelmanson, Marisa Williams(T), Kelly Smyth(T) John Hunter (T) RESL							
				Signature: _____			
ICS 204		Date/Time: 8/30/2021 2200		Personnel Count: 78			

NIMS IAP

CONTROLLED UNCLASSIFIED INFORMATION//BASIC

ASSIGNMENT LIST (ICS 204 WF)

CONTROLLED UNCLASSIFIED
INFORMATION//BASIC

1. Incident Name: <p style="text-align: center; font-weight: bold;">MONUMENT FIRE</p>		2. Operational Period: Date From: 08/31/21 Date To: 09/01/21 Time From: 0700 Time To: 0700				3. Branch Division <p style="text-align: center; font-size: 2em; font-weight: bold;">XL Z</p>	
4. Operations Personnel:					Page 1 of 2 Zulu		
Operations Section Chief: Don Fregulia Branch Director: Gary Monday Division/Group Supervisor: Dennis Wilson, Danny Kamamakani(T)				Night Ops: Corey Rose, Jesse Knox(T) Branch Safety: Air Attack:			
5. Resources Assigned:		** Resources Below in Bold are 12 Hour **					
Resource Identifier	ALS	LWD	Leader	Personnel	Request #	Hours	Reporting Location
HC1 TRINITY IHC		9/2	TRISTAN DIAS	20	C-113	0700-1900	Weaverville
HC2I BITTERROOT IHC		9/12		21	C-121	0700-1900	Weaverville
HC2I ASI ARDEN SOLUTIONS		9/4	JEFF HARRISON	20	C-96	0700-1900	Weaverville
WFM1 HELLS CANYON		9/4	BRIAN BATES	9	O-894	0700-1900	Weaverville
ENG6 PVT ARIES FIRE SERVICE		8/31	DAN MARTIN	3	E-598	0700-1900	Weaverville
DOZ2 PVT SPRATT 436		9/2	ERIC SPRATT	2	E-436	0700-1900	Weaverville
DOZ2 PVT RITTBERGER TRUCKING 801		9/13			E-801	0700-1900	Weaverville
DOZ3 PVT GREENWOOD 479		9/9	JAY GREENWOOD	2	E-479	0700-1900	Weaverville
DOZ3 PVT LONESTAR ENTERPRISES 475		9/2	COREY SUPACK	2	E-475	0700-1900	Weaverville
DOZ3 PVT BRAD INGRAM CONST 168		9/12	MIKE UNDERHILL	2	E-168	0700-1900	Weaverville
WTS1 PVT NORTHSTATE 72		9/4	BOB GETZ	1	E-72	0700-1900	Weaverville
WTS2 PVT CATTLE LACK RANCH 21		9/11	JAMES GOLDIE	2	E-21	0700-0700	Weaverville
WTS2 PVT FORTNER EXCAVATION 23		9/11	BOB FORTNER	1	E-23	0700-1900	Weaverville
WTS2 PVT GLENN'S TENS 637		9/11	GLENN LAQUAGLIA	1	E-637	0700-1900	Weaverville
SKG1 SOFT TRACK ATTACK 50		9/7	FREDDIE TEDDER	1	E-50	0700-0700	Weaverville
SKG1 PVT SPENCER LOGGING 807		9/6	JAKE SPENCER	2	E-807	0700-1900	Weaverville
SKG2 PVT PITMAN RESOURCES 760		9/11	BLAZE WALTER	2	E-760	0700-1900	Weaverville
SKG2 PVT BULL CREEK FORESTRY 761		9/10	TYLEN DIAL	2	E-761	0700-1900	Weaverville
6. Work Assignments:							
<ul style="list-style-type: none"> - Mop-up and secure the fire's edge on Pattison Ridge. - Grid and patrol for spots on green side of Pattison Ridge. - Monitor the fire's edge on Pattison Ridge to maintain pace with main fire. 							
7. Special Instructions:							
8. Communications							
Name	Ch	Function	Rx Freq	Rx Tone	Tx Freq	Tx Tone	Notes
CMD 2	2	COMMAND	171.5375N	107.2	164.8625N	107.2	CMD located On Hayfork Bally
TAC 10	10	TACTICAL	168.2500N	107.2	168.2500N	107.2	NIGHT DIVISION W/Z
A/G CMD	12	A/G CMD	171.8625N		171.8625N		Incident A/G Command
CALCORD	15	MEDICAL	156.0750N	156.7	156.0750N	156.7	(TONE 6)
GUARD	16	AIRGUARD	168.6250N		168.6250N	110.9	EMERGENCY HAILING OF AIRCRAFT
9. Prepared by: Name:		Ryan Resnick, Harry Kelmanson, Marisa Williams(T), Kelly Smyth(T) John Hunter (T)			RESL		Signature: _____
ICS 204		Date/Time: 8/30/2021 2200		Personnel Count: 93			

NIMS IAP

CONTROLLED UNCLASSIFIED INFORMATION//BASIC

ASSIGNMENT LIST (ICS 204 WF)

CONTROLLED UNCLASSIFIED
INFORMATION//BASIC

1. Incident Name: <p style="text-align: center; font-weight: bold;">MONUMENT FIRE</p>		2. Operational Period: Date From: 08/31/21 Date To: 09/01/21 Time From: 0700 Time To: 0700			3. Branch Division <p style="text-align: center; font-weight: bold;">NIGHT (Monument) W/Z</p> <p style="text-align: right;">Page 1 of 1 Whiskey/Zulu</p>		
4. Operations Personnel:					Night Ops: Corey Rose, Jesse Knox(T)		
Operations Section Chief: Don Fregulia					Branch Safety: Tom Nash		
Branch Director:					Air Attack:		
Division/Group Supervisor: Cheveyo Munk, Julie Podony(T)							
5. Resources Assigned:		** Resources Below in Bold are 12 Hour **					
Resource Identifier	ALS	LWD	Leader	Personnel	Request #	Hours	Reporting Location
HC1 LOLO IHC		9/9	SHAWN FAELLA	22	C-108	1900-0700	Weaverville Camp
HC2 PVT TRI-CITIES FORESTRY		9/11	JOSE SILVA	20	C-125	1900-0700	Weaverville Camp
ENG3 SACRAMENTO DISTRICT		9/3	HUGO ERHEWAYN	5	E-673	1900-0700	Weaverville Camp
ENG3 PVT GREY WOLF		9/11	JEFF CAMPBELL	4	E-505	1900-0700	Weaverville Camp
ENG4 BOISE E413		9/11	JONATHAN BLODGETT	6	E-10555	1900-0700	Weaverville Camp
ENG6 E607		9/11	DOUG LESH	6	E-793	1900-0700	Weaverville Camp
ENG6 STONEWALL FPD E610		9/11	KEVIN YEATTS	3	E-795	1900-0700	Weaverville Camp
ENG6 BITTERROOT E641		9/12	RUSSELL BUZZELL	6	E-10537	1900-0700	Weaverville Camp
ENG6 PVT WOODPECKER		9/11	ED FAULKNER	3	E-787	1900-0700	Weaverville Camp
DO22 PVT BROWN		9/7	BARR BROWN	2	E-484	1900-0700	Weaverville Camp
DO22 PVT ROWBERRY		9/6	JIM VARWIG	2	E-629	1900-0700	Weaverville Camp
WTT1 ROCK CREEK		9/2	TIM DANIEL	2	E-80	0700-0700	Weaverville Camp
WTS2 PVT CATTLE LACK RANCH 21		9/11	JAMES GOLDIE	2	E-21	0700-0700	Weaverville Camp
WTS2 PVT CATTLE LACK RANCH 22		9/8	CLANCY ENLOW	1	E-22	1900-0700	Weaverville Camp
SKG1 SOFT TRACK ATTACK 50		9/7	FREDDIE TEDDER	1	E-50	0700-0700	Weaverville Camp
SKG2 RIM ROCK EQUIP.		9/8	ROBERT TOBIASON	2	E-770	1900-0700	Weaverville Camp
PVT PUMPZILLA 2 TRINITY		9/8	JOHN VELEZ	2	S-21	0700-0700	Weaverville Camp
TFLD JACKSON		9/3	ERIC JACKSON	1	E-673.1	1900-0700	Weaverville Camp
6. Work Assignments: - Mop up to the extent necessary to maintain containment.							
7. Special Instructions:							
8. Communications							
Name	Ch	Function	Rx Freq	Rx Tone	Tx Freq	Tx Tone	Notes
CMD 1	1	COMMAND	173.8125N	107.2	168.4750N	107.2	CMD Located on Weaver Bally
TAC 10	10	TACTICAL	168.2500N	107.2	168.2500N	107.2	NIGHT DIVISION W/Z
A/G CMD	12	A/G CMD	171.8625N		171.8625N		Incident A/G Command
CALCORD	15	MEDICAL	156.0750N	156.7	156.0750N	156.7	(TONE 6)
GUARD	16	AIRGUARD	168.6250N		168.6250N	110.9	EMERGENCY HAILING OF AIRCRAFT
9. Prepared by: Name:		Ryan Resnick, Harry Kelmanson, Marisa Williams(T), Kelly Smyth(T) John Hunter (T)			RESL	Signature: _____	
ICS 204	Date/Time: 8/30/2021 2200		Personnel Count: 90				

AIR OPERATIONS SUMMARY ICS-220

Incident Name and Incident Number
 NORTH AND SOUTH ZONES/ Monument SHF 001187 **Sunrise** 633 **Startup** 703 **Cutoff** 1917 **Sunset** 1947

General Remarks, Safety Notes, Hazards, Air Operations Special Equipment, etc.
 TRACK ALL DIPSITE LOCATIONS / NUMBER OF DIPS / GALLONS TAKEN.
 TRACK ALL DROP LOCATIONS / NUMBER OF DROPS / GALLONS DROPPED
 ALL GPS DATA TO BE COLLECTED IN DEGREES, MINUTES, DECIMAL MINUTES FORMAT.
 AVOID Aerial Application of Retardant / Foam / Agent within 300' of Waterways, Bodies of Water, etc.
 If Retardant / Foam / Agent is Dropped Within These Areas Immediately Notify the AOB/D and Provide the Following Information:
 Lat / Long, Estimated Number of Gallons and a Map Detailing The Area.

Time Prepared
 1800

Date Prepared
 Monday, August 30, 2021

Prepared By
 Niko Matteoli

Operational Period - Time
 Tuesday, August 31, 2021

Operational Period - Date
 Tuesday, August 31, 2021


Rescue Ship Information
 Request # A-205
 Radius: Polygon NM
 Altitude: 11500' MSL
 Centerpoint: Lat Long
 NOTAMS: 1/0550
 Frequency 126.2750
<http://tfr.faa.gov/tfr2/list.html>
 Through Incident Communications
 See Medical Plan For Additional Info

SOUTH-(SOUTH COMMUNICATIONS)				NORTH ZONE-(NORTH COMMUNICATIONS)			
Frequencies	RX	Tone	TX	Frequencies	RX	Tone	TX
AIR TACTICS	169.4875		169.4875	AIR TACTICS	169.7250		169.7250
AIR / AIR TFR	126.2750		126.2750	AIR / AIR TFR	126.2750		126.2750
SOUTH COMMAND CDF C2	151.2650	103.5 (8)	159.3300	NORTH COMMAND	173.8125	107.2 (10)	168.4750
SOUTH CMD CDF C11 DIV RR	151.1675	103.5 (8)	159.3875				
SOUTH ROTOR VICTOR	128.7750		128.7750	NORTH ROTOR VICTOR	123.7750		123.7750
SOUTH ROTOR BRIEFING	134.1750		134.1750				
South A/G- Command CDF T13	151.3775	192.8 (16)	151.3775	North A/G - Command	171.8625		171.8625
South A/G - Tactical CDF T25	159.2775	192.8 (16)	159.2775	North A/G - Tactical	171.0375		171.0375
TOLC (Sky Ranch)	167.9500	151.4 (14)	167.9500				
DECK (Sky Ranch)	163.1000		163.1000	DECK (Willow Creek)	168.3500		168.3500
CALCORD - MEDICAL	156.0750	156.7 (6)	156.0750	CALCORD - MEDICAL	156.0750	156.7 (6)	156.0750
AIRGUARD - Emergency Only	168.6250	110.9 (1)	168.6250	AIRGUARD - Emergency Only	168.6250		168.6250

South Zone Helibase										North Zone Helibase									
FAA #	Type	Make/Model	Helibase	Avail	Start	Remarks	FAA #	Type	Make/Model	Helibase	Avail	Start	Remarks						
1CK	I	BV 107 II	Sky Ranch	800	830	A-10015	1CK	I	S61	Willow	800	830	A-11						
5CK	I	UH-60	Sky Ranch	800	830	A-10016	5TH	I	KMAX	Willow	800	830	A-10						
4CK	I	UH-60	Sky Ranch	800	830	A-10000	8AC	I	S64F	Willow	800	830	A-34						
7FH	I	UH-60	Sky Ranch	800	830	A-10001													
3TW	I	UH-60	Sky Ranch	800	830	A-10002	520	II	B-205	Willow	800	830	A-68						
9CH	I	BV 107 II	Sky Ranch	800	830	A-10003	3HT	II	B-205	Willow	800	830	A-97						
0FG	II	UH-1H	Sky Ranch	800	830	A-10017													
68U	II	S58T	Sky Ranch	800	830	A-10009	503	III	B-407	Willow	800	830	A-152						
3CS	II	UH-1H	Sky Ranch	800	830	A-10008													
6LH	II	B-212	Sky Ranch	800	830	A-10010													
7TK	III	B-407	Sky Ranch	800	830	A-10035													
2BH	III	BH206L+	Sky Ranch	800	830	A-10029													
9TA	III	AS350B3	Sky Ranch	800	830	A-10014	UR32	UAS		Willow	800	830							

South Zone					North Zone				
Position	Name	Phone	Trainee	Phone	Position	Name	Phone	Trainee	Phone
AOBD	Niko Matteoli	(704) 488-2460			AOBD	John Keesee	(605) 551-6422		
AOBD (D)	Tim Shiffer	(530) 448-2418			ASGS	Greg Scully	(907) 240-4660		
ASGS	Josh Faulkner	(530) 356-1351			HEBM	Seth Ross	(907) 419-4627		
HEBM	Kody Hill	(530) 917-1438	Gary Engen	(707) 299-7699	ATGS	Gordon Amundson	(907) 712-4769		
HLCO	Rudy Ynigues	(530) 515-4440			ATGS	Jay Walker	(263) 696-8530		
HLCO	Tim Shiffer	(530) 448-2418			HLCO	Casey Jones	(559) 696-3878		

ICS 205 - INCIDENT RADIO COMMUNICATIONS PLAN

1. Incident Name: Monument Fire South Zone Incident Channels		2. Date/Time Prepared Date: 08/30/2021 Time: 1930		3. Operational Period: Date From: 08/31/21 Date To: 09/01/21 Time From: 0700 Time To: 0700				
4. Communications								
Ch#	Function	Name	Assigned To	Rx Freq	Rx Tone	Tx Freq	Tx Tone	Notes
1	COMMAND	CDF C2	ALL DIVS	151.2650	103.5 (T8)	159.3300	151.4 (T14)	
2	COMMAND	CDF C11 (T14)	BRANCH 30	151.1675	103.5 (T8)	159.3975	151.4 (T14)	TO BE USED IN BRANCH 30 ONLY
3	COMMAND	CDF C11 (T11)	DIV RR	151.1675	103.5 (T8)	159.3975	114.8 (T11)	FOR RR ONLY
4	TACTICAL	VFIRE 23	DIV DD / HH	154.2950N	156.7 (T6)	154.2950N	156.7 (T6)	
5	TACTICAL	VFIRE 24	DIV NN	154.2725N	156.7 (T6)	154.2725N	156.7 (T6)	
6	TACTICAL	CDF T26	DIV RR	159.2925N	192.8 (T16)	159.2925N	192.8 (T16)	
7	TACTICAL	CDF T27	SOUTH CONT 1	159.3075N	192.8 (T16)	159.3075N	192.8 (T16)	
8	TACTICAL	CDF T28	SOUTH CONT 2	151.1825	192.8 (T16)	151.1825	192.8 (T16)	
9	TACTICAL	CDF T15	DIV FSR	159.2700	192.8 (T16)	159.2700	192.8 (T16)	
10	TACTICAL	CDF T23	MONUMENT FUELS	159.4500	192.8 (T16)	159.4500	192.8 (T16)	TRAVEL NET FOR MONUMENT FUELS
11								
12								
13	TACTICAL	CDF T13	ALL DIVS	151.3775	192.8 (T16)	151.3775	192.8 (T16)	A/G COMMAND
14	AIR TO GROUND	CDF T25	ALL DIVS	159.2775	192.8 (T16)	159.2775	192.8 (T16)	A/G TACTICAL
15	MEDICAL	CALCORD	ALL DIVS	156.0750N	156.7 (T6)	156.0750N	156.7 (T6)	MEDICAL COORDINATION
16	AIRGUARD	GUARD 31	ALL DIVS	168.6250N		168.6250N	110.9 (T1)	EMERGENCY USE ONLY
17								
18								
19								
20	AIRGUARD	GUARD 31	ALL DIVS	168.6250N		168.6250N	110.9 (T1)	EMERGENCY USE ONLY
5. Special Instructions								
TO CONFIRM YOU HAVE THE MOST CURRENT CLONE, ENSURE YOUR DISPLAY OF CHANNEL 16 OR 20 MATCHES CHANNEL 16 OR 20 OF THE 205 - HEIGHT AND POWER ARE KEY WHEN USING RADIOS; BE AT A HIGH POINT, USE A MOBILE IF POSSIBLE, AND USE RADIO RELAYS WHEN NEEDED								
6. Prepared by (Communications Unit Leader): Name: Chris Johns			Signature: 					
ICS 205 - CONTROLLED UNCLASSIFIED INFORMATION/BASIC			Date/Time: 08/30/21 1930					

INCIDENT RADIO COMMUNICATIONS PLAN
ICS 205

Incident Name		Date/Time Prepared		Operational Period Date/Time				
Monument North IA		8/30/21 @ 1800		Day-Night 8/31/21 0600 - 9/1/21 0600				
Ch #	Channel Name	Assignment	RX Frequency Narrowband (N) Wideband (W)	RX Tone/NAC	TX Frequency Narrowband (N) Wideband (W)	TX Tone/NAC	Mode Digital (D) Analog (A) Mixed (M)	Remarks
1	COMMAND	SHF-R	171.5750 N		165.0125 N	OST	A	Shasta Forest Repeater (Tone 4,5,6,9)
2	COMMAND	SERV-R	171.5000 N		164.8250 N	OST	A	Shasta Service Net (Tone 4,6)
3	COMMAND	SHU-L	151.1600 N		159.2700 N	OST	A	CALFIRE Shasta Command (Tone 3,7)
4	COMMAND	SRF-R	172.3750 N		164.1750 N	OST	A	Six Rivers Forest Repeater (Tone 5,6)
5	TACTICAL	NIFC T2	168.2000 N		168.2000 N		A	I/A Tactical
6	TACTICAL	RS TAC 4	166.5500 N		166.5500 N		A	I/A Tactical
7	TACTICAL	RS TAC 5	167.1125 N		167.1125 N		A	I/A Tactical
8	TACTICAL	CDF T11	151.4450 N	192.8	151.4450 N	192.8	A	I/A Tactical (Tone 16)
9	LOCAL GOV RPT	XTR-R	154.7850 N		158.7600 N		A	Trinity County Command (Tone 10,13)
10	MONUMENT CMD	MON CM2	171.5375 N	107.2	164.8626 N	107.2	A	Monument Command Hayfork Bally (Tone 10)
11	MONUMENT CMD	MON CM4	173.5000 N	107.2	165.8125 N	107.2	A	Monument North Command Brush Mountain (Tone 10)
12	MONUMENT AIR TO GROUND	AG TAC	171.0375 N		171.0375 N		A	Monument North A/G Brush Mountain
13	AIR TO GROUND SECONDARY	AG08 SEC	166.8750 N		166.8750 N		A	IA A/G Secondary
14	AIR TO GROUND PRIMARY	AG43 PRI	167.6000 N		167.6000 N		A	IA A/G Primary
15	CALCORD	MEDICAL COORDINATION	156.0750 N	156.7	156.0750 N	156.7	A	MEDIVAC Coordination (Tone 6)
16	GUARD	GUARD	168.6250 N		168.6250 N		A	Emergency (Tone 1)
I-205 Prepared By		Kevin Throop COML		USE HUMAN REPEATERS WHEN NEEDED.				

**INCIDENT RADIO COMMUNICATIONS PLAN
ICS 205**

Incident Name		Date/Time Prepared		Operational Period Date/Time					
Monument North Fire		8/30/21 @ 1800		Day-Night 8/31/21 0600 - 9/1/21 0600					
4. BASIC RADIO CHANNEL UTILIZATION									
Ch #	Channel Name	Assignment	RX Frequency Narrowband (N) Wideband (W)	RX Tone/NAC	TX Frequency Narrowband (N) Wideband (W)	TX Tone/NAC	Mode Digital (D) Analog (A) Mixed (M)	Remarks	
1	CMD 1	ALL DIVISIONS	173.8125 N	107.2	168.4750 N	107.2	A	CMD Located on Weaver Bally	
2	CMD 2	ALL DIVISIONS	171.5375 N	107.2	164.8625 N	107.2	A	CMD located On Hayfork Bally	
3	CMD 3	ALL DIVISIONS	171.0875 N	107.2	164.6000 N	107.2	A	CMD Located on Bully Chooop	
4	CMD 4	ALL DIVISIONS	173.5000 N	107.2	165.8725 N	107.2	A	CMD Located on Brush Mt.	
5	CMD 5	ALL DIVISIONS	173.6500 N	107.2	164.8125 N	107.2	A	CMD Located on Ironside Lookout	
6	TAC 6	DIV A, DIV U	168.0500 N	107.2	168.0500 N	107.2	A		
7	TAC 7	DIV E,	168.6000 N	107.2	168.6000 N	107.2	A		
8	TAC 8	DIV J, DIV W	166.7250 N	107.2	166.7250 N	107.2	A		
9	TAC 9	DIV K, DIV L	166.7750 N	107.2	166.7750 N	107.2	A	NIGHT DIVISION K	
10	TAC 10	DIV M, DIV Z	168.2500 N	107.2	168.2500 N	107.2	A	NIGHT DIVISION WIZ	
11	TAC 11	NORTH CONTINGENCY	168.2375 N	107.2	168.2375 N	107.2	A		
12	A/G CMD	A/G CMD	171.8625 N		171.8625 N		A	Incident Air to Ground Command	
13	A/G TAC	ALL DIVISIONS	171.0375 N		171.0375 N		A	Incident Air to Ground Tactical	
14	IA-CMD	IA-CMD	171.5750 N		165.0125 N	136.5	A	Shasta Forest Repeater	
15	CALCORD	MEDICAL COORDINATION	156.0750 N	156.7	156.0750 N	156.7	A	(TONE 6)	
16	GUARD	GUARD	168.6250 N		168.6250 N	110.9	A	EMERGENCY HAILING OF AIRCRAFT	
I-205 Prepared By		Kevin Throop - COML					USE HUMAN REPEATERS WHEN NEEDED.		

MEDICAL PLAN ICS 206	1. INCIDENT NAME MONUMENT	2. DATE PREPARED 08/30/2021	3. TIME PREPARED 1800	4. OPERATIONAL PERIOD 08/31-09/01, 0700-0700
---------------------------------	--------------------------------------	--	----------------------------------	---

5. INCIDENT MEDICAL AID STATIONS				
MEDICAL SUPPLY STATIONS		LOCATION		PARAMEDICS
				YES NO
CAL MAT		ANDERSON BASE CAMP		MD
MERT		TRINITY RIVER CAMP		PA

6. TRANSPORTATION					
A. AMBULANCE SERVICES					
NAME		LOCATION		PHONE	PARAMEDICS
					YES NO
AMBULANCE 104		BRANCH 30		CMD CHANNEL	X
REMS 1		BR 30 DIV NN		CMD CHANNEL	X
REMS 5 (UTV)		BR 30 DIV RR		CMD CHANNEL	X

B. AIR AMBULANCES					
NAME		LOCATION		PHONE	PARAMEDICS
					YES NO
CALIFORNIA GUARD 822 (24 HOUR HOIST)		Redding Airport		--Contact CMD--	X

7. HOSPITALS								
NAME	ADDRESS	TRAVEL TIME		PHONE Frequency	HELIPAD		BURN CENTER	
		AIR	GRd		YES	NO	YES	NO
SHASTA REG MED CTR TRAUMA LVL 3	1100 BUTTE ST, REDDING 40' 35.106'N, -122' 23.268'W	15 Min	60 Min	(530) 244-5400 468.025 Tx, 468.025 Rx	X			X
MERCY MED CTR TRAUMA LVL 2	2175 ROSALINE AVE, REDDING 40' 34.332'N, -122' 23.796'W	15 Min	60 Min	(530) 225-7201 468.075 Tx, 463.000 Rx	X			X
UC DAVIS TRAUMA LVL 1	2315 STOCKTON BLVD, SACRAMENTO 38' 33.360'N, -121' 27.330'W	1.25 Hour	4 Hour	(916) 734-2011 446.525 Tx, 203.5 Rx	X		X	
TRINITY HOSPITAL WEAVERVILLE	60 EASTER AVENUE, WEAVERVILLE 40' 44.275'N, -122'56.359'W	10 Min	30 Min	(530) 623-5541 x1	X			X

8. MEDICAL EMERGENCY PROCEDURES

**EMERGENCY FREQUENCY:
"LINE EMERGENCY"**

The Crew Supervisor will contact the Division Supervisor with patient complaint/condition, location and resource needs.

- Division/Group Supervisor contacts:
 1. Closest EMS resource
 2. Communications Unit
- Communications Unit contacts:
 1. Ground or Air ambulance as requested
 2. Operations
 3. Safety
 4. Medical Unit
- Division Supervisor or designee will serve as point of contact and run medical emergencies on the assigned channel.
 1. A pre-assigned COMMAND frequency and CALCORD should be used for ITWI and only for duration of need.
- Communications Unit will clear the command channel for emergency traffic as needed and only for the duration of need.

CAMP EMERGENCY:

Contact the Medical Unit with a patient complaint/condition and location. Medical Staff will respond to stabilize incident:

- Medical Unit contacts:

1. Communications	4. Operations
2. Safety	5. Crew Supervisor
3. Logistics	6. Comps/Claims

INJURY REPORTING PROCEDURES

CHIEF COMPLAINT _____
 LOCATION OF PATIENT _____
 POINT OF CONTACT _____
 TRANSPORTATION REQUESTED BY: AIR ___ GROUND ___
 POINT OF PICKUP _____
 LAT _____ LONG _____
 PATIENT UNIT ID _____
 IS AN EMT/P WITH PATIENT: YES ___ NO ___
 AGE _____
 SEX: MALE ___ FEMALE ___

**ALL EMERGENCIES---Secure the area
and identify witnesses for later investigation.
Keep an accurate log of events.**

**EMERGENCY
916-883-0934**

ICS 206

9. PREPARED BY: (Medical Unit Leader)
JOSH STALEY-(MEDL)

10. REVIEWED BY: (Safety Officer)
TIM IRWIN-(SOFR)

\$ FINANCE MESSAGE \$

Please No Off Site Feeding Unless Approved by the Finance Section Chief.

CAL FIRE PERSONNEL

Make sure to create a paper FC-33 so we can update.
If anyone has any CalCard travel receipts and meal/lodging sign in sheets, please get a copy to Finance.

LOCAL GOVERNMENT RESOURCES

Make sure you check in with TIME Unit for ABH or F-42 Paperwork.

ALL HIRED EQUIPMENT

Make sure you get your shift ticket filled out by your **Division Group Supervisor or Supervisor.**

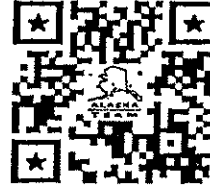
ALL SUPERVISORS OF HIRED EQUIPMENT

Shift Tickets for hired equipment need to be signed and turned in to TIME daily. Ensure the shift ticket is filled out completely (including evaluation), accurately and legibly. **Example included in IAP.**

PROPERTY DAMAGE or INJURIES

Please report any property damage caused by suppression activities and/or injuries to the Comp/Claims Unit.

MONUMENT NORTH FIRE
Finance Process
CA-SHF-001187



For resources hired out of state and have VIPR agreement scan QR code

IMPORTANT INFORMATION: If you are a Monument North Resource, i.e., you have a RO # four digits or less (E-489), and you are 'loaned' to the South Zone, please note **SOUTH ZONE** or **Monument South Zone** on your Shift Ticket / CTR.

Please send all documents to 2021.monument.finance@firenet.gov for all resources.

Email Subject Line: TIME/Resource Order No./ Resource Name/Position Code – Put TIME, CTR, SHIFT TICKET in the subject line with your information

(Example: TIME/O-200/SBear/Safety)

Email all documents that pertain to your assignment:

Agency Overhead	Agency ADs / EFFs	VIPR Resources	Contract / Agency Crews	Cooperators
Resource Order Shift Tickets	Resource Order Casual Hire Form Shift Tickets	Resource Order VIPR Agreement Schedule of Items Inspections Shift Tickets	Resource Order Manifest Agreement / Contract Schedule of Items Inspections Crew Time Reports	Resource Order Agreement Shift Tickets / CTRs

Submit Equipment Shift Tickets or Crew Time Reports (CTRs) daily to 2021.monument.finance@firenet.gov

Please include your email address and phone number in the body of the email when sending your documents.

Any questions, please call: FINANCE – (213) 431-4035 – Weaverville
 (425) 500-9464 – Weaverville
 (425) 500-9475 – Willow Creek
 (360) 624-2315 – Luann Grover

COMP / CLAIMS

Weaverville

Barb Haxby
barbara_haxby@firenet.gov
 (360) 601-8820

Willow Creek

Susan Haggerty
susan_haggerty@firenet.gov
 (586) 943-3016

24 Hour Shift

EMERGENCY SHIFT TICKET and EVALUATION FORM					Contractor Name								
The responsible Government Officer will complete this form each shift							Fireline Builders						
Incident or Project Name August Complex West Zone		Incident Number CAMEU010843		Request Number E-99		Operator #1 Jim Smith	Operator #2 John Jones						
Agreement Number LNU01234567							Operator Furnished By: <input checked="" type="checkbox"/> Contractor <input type="checkbox"/> Government						
Equipment Make CAT			Equipment Model / Type Dozer D6H				Operating Supplies Furnished By: <input checked="" type="checkbox"/> Contractor <input type="checkbox"/> Government						
Serial Number 6LN3344			Licence Number				Equipment Status <input checked="" type="checkbox"/> Inspected <input checked="" type="checkbox"/> Under Agreement						
Equipment Use (Circle) hours / Days / Miles							Released by Government <input type="checkbox"/> Withdrawn by Contractor <input type="checkbox"/>						
Date Mo / Day	Start	Stop	Work	Assignment				Remarks/Comments **					
8/2	0700	2400	17	Division J									
8/3	0001	0700	7	Division J									
Vendor Rating							Govt. Rep. Name and Position - PRINT Mike Brown Div J						
<table border="1" style="width: 100%; border-collapse: collapse;"> <tr> <td>Poor*</td> <td>Avg.</td> <td>Good</td> <td>Exc.</td> <td>N/A</td> </tr> </table>							Poor*	Avg.	Good	Exc.	N/A	Govt. Rep. Signature <i>Mike Brown</i>	
Poor*	Avg.	Good	Exc.	N/A									
Met Performance Expectations							Contractor Signature <i>Jim Smith</i>						
Equipment in Safe Working Condition							Date 08/03/16 Time 0700						
Operator Skill Level													
Operates Safely													
Operator's Cooperation Level													
Overall Performance													
<p>Vendor Rating must be completed</p>							<p>* NOTE: Any rating of POOR requires an explanation in Comment Section. **Final evaluation or for more documentation, use an ICS Form 230 or equivalent.</p>						
							<p>CALFIRE 297 (Rev 3-2011)</p>						
Pink - Finance		Blue - Home Unit HE Coordinator		Yellow - Vendor		White - Govt Representative							

12 Hour Shift

EMERGENCY SHIFT TICKET and EVALUATION FORM					Contractor Name								
The responsible Government Officer will complete this form each shift							H2O For You						
Incident or Project Name August Complex West Zone		Incident Number CAMEU010843		Request Number E-89		Operator #1 James Russell	Operator #2						
Agreement Number LNU11111199							Operator Furnished By: <input checked="" type="checkbox"/> Contractor <input type="checkbox"/> Government						
Equipment Make Peterbilt			Equipment Model / Type 2000 Gallon				Operating Supplies Furnished By: <input checked="" type="checkbox"/> Contractor <input type="checkbox"/> Government						
Serial Number 11145N			Licence Number SE653574				Equipment Status <input checked="" type="checkbox"/> Inspected <input checked="" type="checkbox"/> Under Agreement						
Equipment Use (Circle) hours / Days / Miles							Released by Government <input type="checkbox"/> Withdrawn by Contractor <input type="checkbox"/>						
Date Mo / Day	Start	Stop	Work	Assignment				Remarks/Comments **					
8/2	0001	0700	7	Off Shift									
8/2	0700	2000	13	Division B									
8/2	2000	2400	4	Off Shift									
Vendor Rating							Govt. Rep. Name and Position - PRINT Steve Hampton, Div B						
<table border="1" style="width: 100%; border-collapse: collapse;"> <tr> <td>Poor*</td> <td>Avg.</td> <td>Good</td> <td>Exc.</td> <td>N/A</td> </tr> </table>							Poor*	Avg.	Good	Exc.	N/A	Govt. Rep. Signature <i>Steve Hampton</i>	
Poor*	Avg.	Good	Exc.	N/A									
Met Performance Expectations							Contractor Signature <i>James Russell</i>						
Equipment in Safe Working Condition							Date 08/02/16 Time 2000						
Operator Skill Level													
Operates Safely													
Operator's Cooperation Level													
Overall Performance													
<p>Vendor Rating must be completed</p>							<p>* NOTE: Any rating of POOR requires an explanation in Comment Section. **Final evaluation or for more documentation, use an ICS Form 230 or equivalent.</p>						
							<p>CALFIRE 297 (Rev 3-2011)</p>						
Pink - Finance		Blue - Home Unit HE Coordinator		Yellow - Vendor		White - Govt Representative							

24 Hour Shift to 12 Hour Shift

EMERGENCY SHIFT TICKET and EVALUATION FORM					Contractor Name				
The responsible Government Officer will complete this form each shift					Fireline Builders				
Incident or Project Name		Incident Number		Request Number		Operator #1		Operator #2	
August Complex West Zone		CAMEU010843		E-99		Jim Smith		John Jones	
Agreement Number					Operator Furnished By:				
LNU01234567					<input checked="" type="checkbox"/> Contractor <input type="checkbox"/> Government				
Equipment Make			Equipment Model / Type			Operating Supplies Furnished By:			
CAT			Dozer D6H			<input checked="" type="checkbox"/> Contractor <input type="checkbox"/> Government			
Serial Number			Licence Number			Equipment Status			
6LN3344						<input checked="" type="checkbox"/> Inspected <input checked="" type="checkbox"/> Under Agreement			
Equipment Use					Remarks/Comments **				
(Circle) <u>Hours</u> / Days / Miles					Supplier went from 24 hour to 12 hour shift				
Date	Start	Stop	Work	Assignment					
8/2	0001	700	7	Division J					
8/2	0700	2300	16	Division J					
8/2	2300	2400	1	OFF SHIFT					
Vendor Rating					Govt. Rep. Name and Position - PRINT				
Poor* Avg. Good Exc. N/A					Mike Brown, Div J				
Met Performance Expectations					Govt. Rep. Signature				
Equipment in Safe Working Condition					Mike Brown				
Operator Skill Level					Contractor Signature				
Operates Safely					Jim Smith				
Operator's Cooperation Level					Date				
Overall Performance					08/02/20 Time 0700				
* NOTE: Any rating of POOR requires an explanation in Comment Section.					CALFIRE 297				
**Final evaluation or for more documentation, use an ICS Form 230 or equivalent.					(Rev 3-2011)				
Pink - Finance		Blue - Home Unit HE Coordinator		Yellow - Vendor		White - Govt Representative			

12 Hour Shift

EMERGENCY SHIFT TICKET and EVALUATION FORM					Contractor Name				
The responsible Government Officer will complete this form each shift					H2O For You				
Incident or Project Name		Incident Number		Request Number		Operator #1		Operator #2	
August Complex West Zone		CAMEU010843		E-89		James Russell			
Agreement Number					Operator Furnished By:				
LNU1111199					<input checked="" type="checkbox"/> Contractor <input type="checkbox"/> Government				
Equipment Make			Equipment Model / Type			Operating Supplies Furnished By:			
Peterbilt			2000 Gallon			<input checked="" type="checkbox"/> Contractor <input type="checkbox"/> Government			
Serial Number			Licence Number			Equipment Status			
11145N			SE653574			<input checked="" type="checkbox"/> Inspected <input checked="" type="checkbox"/> Under Agreement			
Equipment Use					Remarks/Comments **				
(Circle) <u>Hours</u> / Days / Miles									
Date	Start	Stop	Work	Assignment					
8/3	0001	0700	7	Off Shift					
8/3	0700	2000	13	Division B					
8/3	2000	2400	4	Off Shift					
Vendor Rating					Govt. Rep. Name and Position - PRINT				
Poor* Avg. Good Exc. N/A					Steve Hampton, Div B				
Met Performance Expectations					Govt. Rep. Signature				
Equipment in Safe Working Condition					Steve Hampton				
Operator Skill Level					Contractor Signature				
Operates Safely					James Russell				
Operator's Cooperation Level					Date				
Overall Performance					08/03/20 Time 2000				
* NOTE: Any rating of POOR requires an explanation in Comment Section.					CALFIRE 297				
**Final evaluation or for more documentation, use an ICS Form 230 or equivalent.					(Rev 3-2011)				
Pink - Finance		Blue - Home Unit HE Coordinator		Yellow - Vendor		White - Govt Representative			



PUBLIC INFORMATION SECTION



**Incident Information Line:
 South Zone (949)433-2638 North Zone (530)628-0039**

Status	
Incident Start Date: 7/30/2021	Incident Start Time: 6:00 p.m.
Total acres:	Containment:
Cause: Lightning	Total Personnel:

MEDIA – The California State Penal Code Section 409.5(d) allows the news media to enter scenes of disaster, riot or civil disturbance. Properly identified members of the news media should not be restricted from entering locations specified within the code. However, this does not include crime scenes, private property and does not imply that the news media may interfere with incident operations while they are in the areas of concern. More information can be found [here](#).



CAL FIRE SOCIAL MEDIA POLICY – When assigned to a CAL FIRE incident, you will adhere to the CAL FIRE Social Media Policy, Section 0691. You can find further information about the CAL FIRE Social Media Policy [here](#).



PHOTOGRAPHS AND VIDEOS OF INCIDENT – We are in a new era of media. Media no longer means news/broadcast industry, but now refers to anyone that has the capability to shoot video, photographs and post them onto social media sites in a matter of minutes. Unfortunately, we have seen some instances of photographs or videos that have depicted unsafe, unprofessional or embarrassing circumstances which are a serious breach of ethics. When this happens, it reflects poorly on all that are attached to this incident. Posting an inappropriate video, photo or blog comment could expose oneself to unwanted ramifications. It may be unsafe to shoot photos or video and a firefighter who is concentrating on a camera loses their situational awareness.

The Public Information Office would like copies of the video and pictures that you safely took while not in an emergency situation, fire suppression activity or in an overhead assignment. Bring your video and pictures to the Public Information trailer; they will be reviewed and possibly uploaded to our many CAL FIRE social media sites. Remember, we don't want photographs or videos that depict unsafe, unprofessional or embarrassing circumstances, which are a serious breach of ethics.



LOST AND FOUND – The Information Section will manage lost and found items for the incident.

MAIL SERVICE – The Information Section can assist you with sending and receiving mail.

Anderson Fairgrounds
 ATTN: South Zone Monument Fire Information
 (Your Name)
 1890 Briggs Street
 Anderson, CA 96007

TRAINING MESSAGE

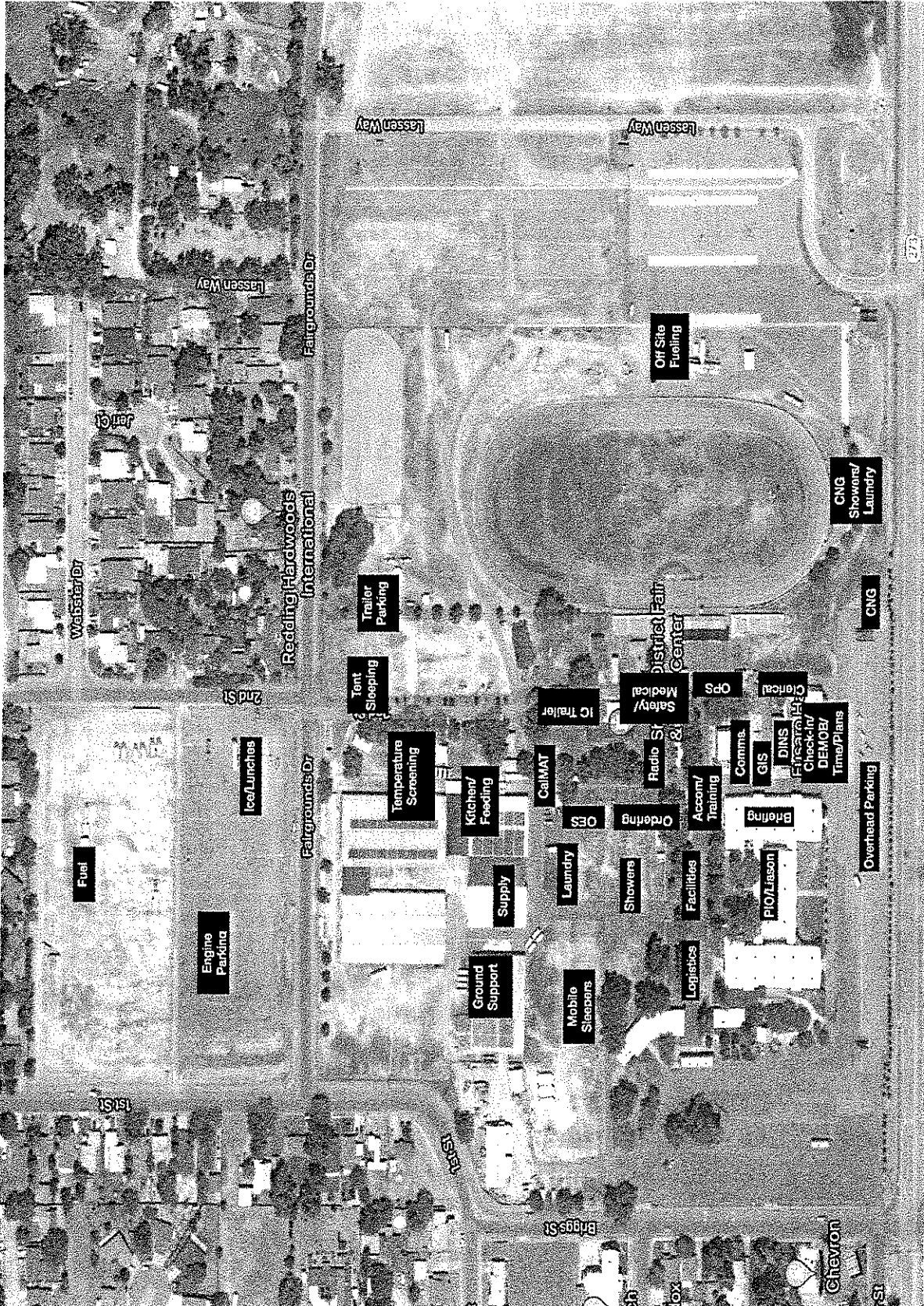
If you have just arrived at The Monument Fire as a Trainee, please don't forget to check in with the Training Specialist.

Do you want credit for this assignment?

Please make sure to check out with Training before you demob

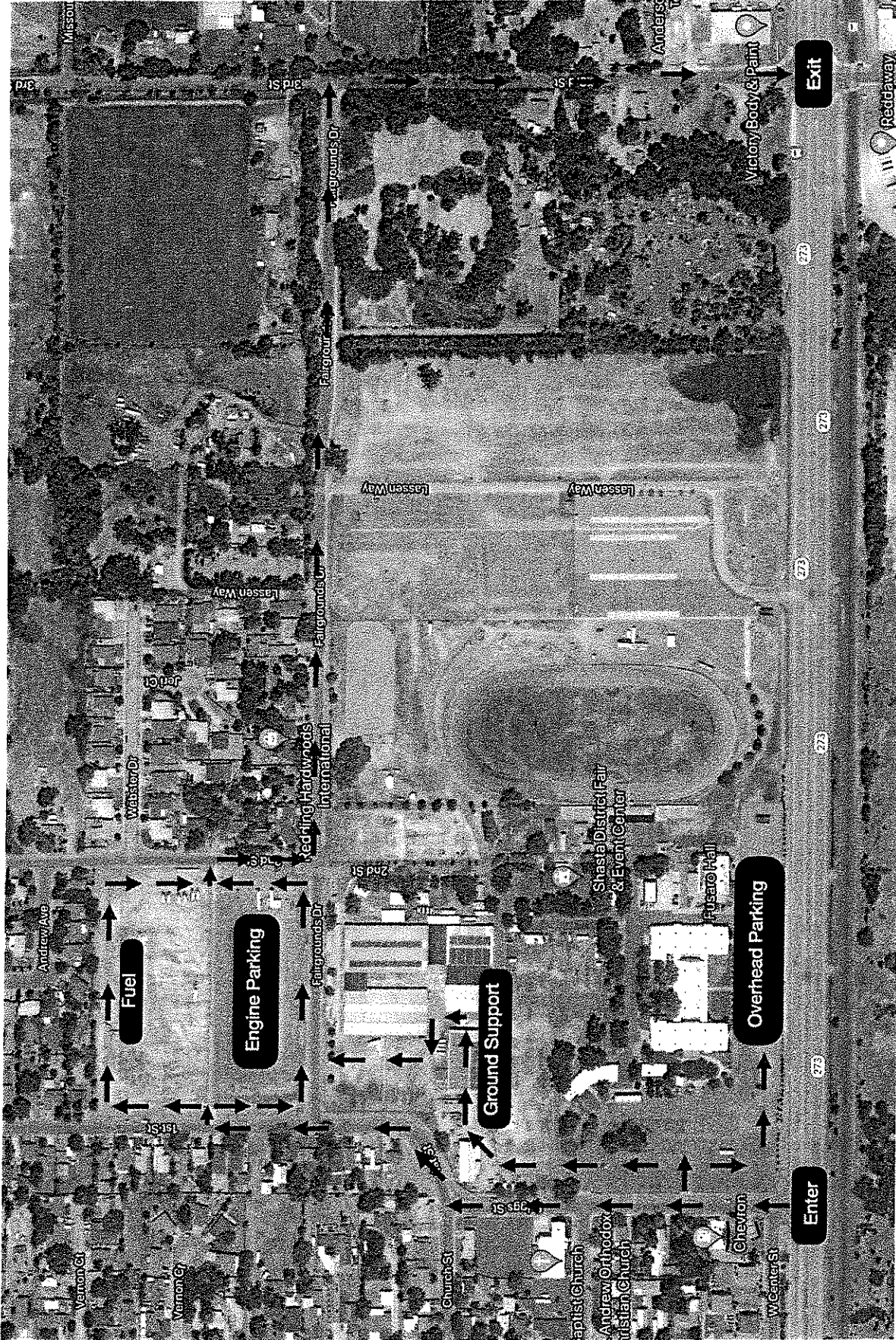
Training is located behind the Briefing Hall
It only takes a few minutes to check in.





**MONUMENT FIRE
ANDERSON FAIRGROUNDS
FACILITIES MAP**
CA-SHF-001187





**MONUMENT FIRE
ANDERSON FAIRGROUNDS
FACILITIES MAP**
CA-SHF-001187





Transportation

Monument Fire

CA-SHF-00187

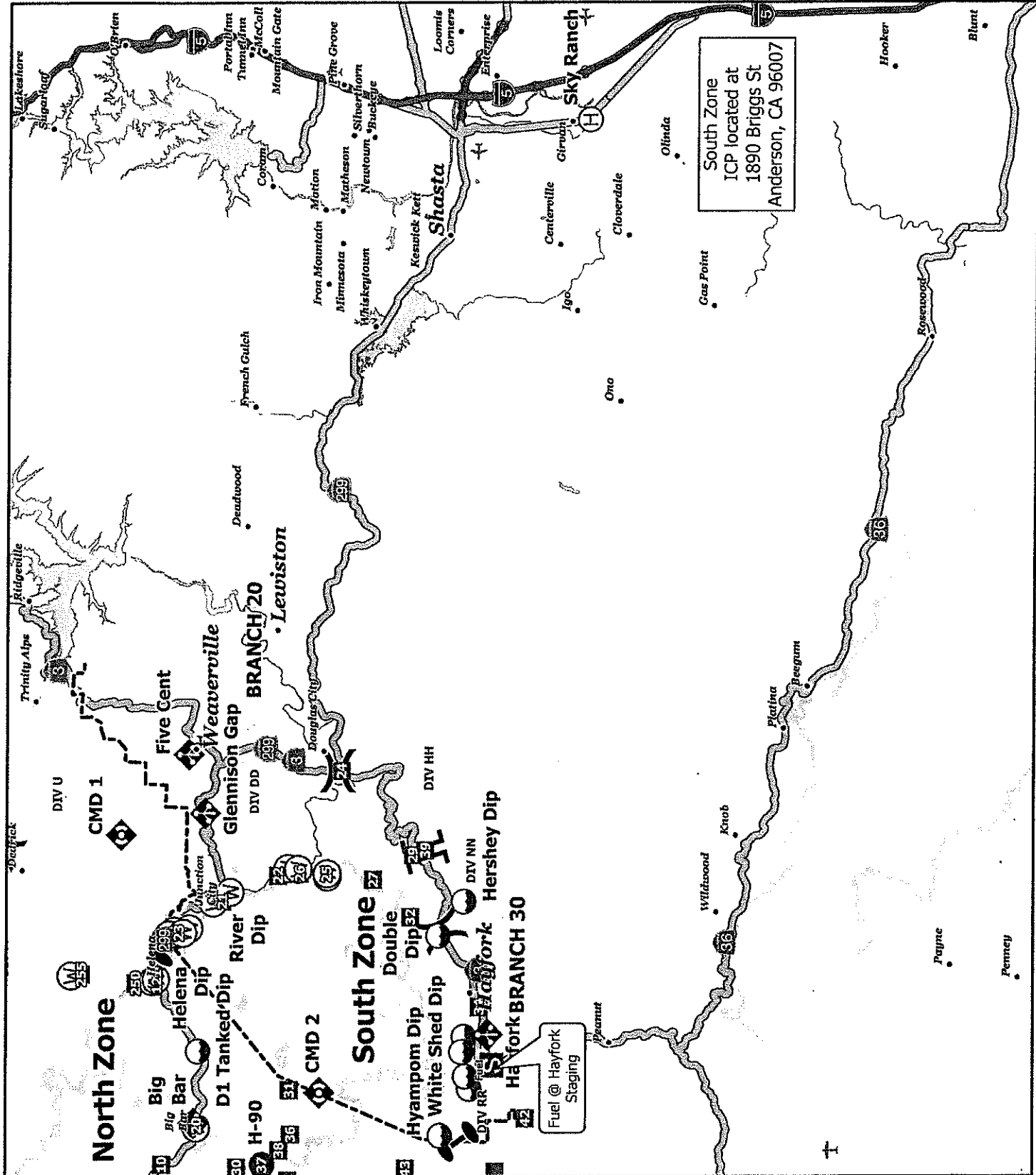
0700 - 0700 NAD 83

- Dip Site
- Mobile Retardant Base
- Helispot
- Helibase
- Division Break
- Branch Break
- Zone Break
- Drop Point
- Staging Area
- Mobile Weather Unit
- Repeater
- Water Source
- Zone Break
- Controlled access
- Highway or ramp
- Wildfire Fire Perimeter



0 1 2 4 Miles

INM 5
8/22/2021
22:11 hr





DEMOBILIZATION PLAN
MONUMENT INCIDENT
CA-SHF-001187

DEMOB PROCEDURES



- Check the demob list daily. You can find the demob list posted around camp or by utilizing the QR code on your IAP.
- **Please report to demob only at your scheduled time.**
- **Only one person per resource is to report to demob.**
- **Every effort will be made to provide a remote demob.**
- The Demob Unit will provide you with an ICS-221 check-out form.
- For the following units, demob personnel will make radio contact to ensure you are clear for demobilization:
 - Supply Unit
 - Communications Unit
 - Accommodations Unit (If applicable)
- For the following units, you will report in person to complete your check-out:
 - Time Unit
 - Documentation Unit
 - Training Specialist (If applicable)
 - Ground Support Unit
- Return your completed ICS 221 to the Demob Unit and you will be advised of your status (released home, reassigned, etc.)

Greg Barnhart
Demobilization Unit Leader
CAL FIRE Incident Management Team 5

FIRING OPERATION CHECKLIST

Location: _____

Date: _____ Time: _____

Firing Supervisor _____

1. Personnel Briefing

- Objectives
- Conditions (fire environment)
- Resource assignments identified
 - Firing personnel
 - Holding forces
 - Lookouts
- Ignition plan/sequence
- Communication Plan
- Contingency Plan
- Safety issues

2. Go / No-Go

- All personnel briefed
- Weather forecast reviewed
- Resources in place
- Lookouts posted as needed
- Anchor and termination firing points identified
- Communications systems in place
- Fire behavior forecast reviewed
- Escape routes and safety zones established and made known
- Adjoining forces/Air Attack notified

3. Approval Prior To Firing

- Division Supervisor
- Branch Director
- Operations

4. Other Notifications

- Other: _____
- Other: _____

Attach Firing Operations Checklist to ICS-214

