

# INCIDENT ACTION PLAN MONUMENT FIRE SOUTH ZONE INCIDENT

CA-SHF-001187

Wednesday



## OPERATIONAL PERIOD



9/1/2021 0700  
to  
9/2/2021 0700



North Zone

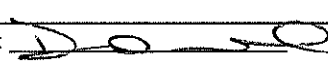
South Zone



# INCIDENT OBJECTIVES (ICS 202)

<b>1. Incident Name:</b> Monument Fire South Zone	<b>2. Operational Period:</b>	Date From: 9/1/2021 Time From: 0700	Date To: 9/2/2021 Time To: 0700
<b>3. Objective(s):</b>			
<u>Management Objectives</u> <ul style="list-style-type: none"> <li>- Ensure that the strategies and tactics provide for firefighter and public safety through the application of sound risk management.</li> <li>- Minimize the threat to private property, communities, businesses, and critical infrastructure.</li> <li>- Establish and strengthen cooperator, partner, and stakeholder relationships.</li> <li>- Follow identified standard procedures to minimize the spread of Covid-19.</li> <li>- Communicate effectively and often with the public and surrounding communities.</li> <li>- Minimize the cost of the incident by employing tactics that have the highest probability of success while minimizing firefighter exposure.</li> </ul>			
<u>Control Objectives</u> <ul style="list-style-type: none"> <li>- Keep the fire North of Highway 3 and Highway 36</li> <li>- Keep the fire South of Siskiyou and Trinity County line, while preserving wilderness characteristics.</li> <li>- Keep the fire East of South Fork of the Trinity River and the New River.</li> <li>- Keep the fire West of Highway 3.</li> </ul>			
<b>General Situational Awareness:</b> <ul style="list-style-type: none"> <li>- See attached Safety Message</li> </ul>			
<b>5. Site Safety Plan Required?</b> Yes <input type="checkbox"/> No			
<b>Approved Site Safety Plan(s) Located at:</b>			
<b>6. Incident Action Plan</b>			
<input checked="" type="checkbox"/> ICS 203	<input checked="" type="checkbox"/> ICS 215A	<input type="checkbox"/> ICS 205 A	<input type="checkbox"/>
<input checked="" type="checkbox"/> ICS 204	<input checked="" type="checkbox"/> ICS 220	<input checked="" type="checkbox"/> Training Message	<input type="checkbox"/>
<input checked="" type="checkbox"/> ICS 205	<input checked="" type="checkbox"/> Facility Maps	<input checked="" type="checkbox"/> Travel Map	<input type="checkbox"/>
<input checked="" type="checkbox"/> ICS 206	<input checked="" type="checkbox"/> Weather Forecast	<input checked="" type="checkbox"/> Demob Plan	<input type="checkbox"/> County Health Message
<input checked="" type="checkbox"/> ICS 208	<input checked="" type="checkbox"/> Fire Behavior	<input checked="" type="checkbox"/> Finance Message	<input checked="" type="checkbox"/> ICS 214
<b>7. Prepared By:</b> Ryan Davis	<b>Position/Title:</b> PSC	<b>Signature:</b>	
<b>8. Approved by Incident Commander:</b>	Mike Parkes	<b>Signature:</b>	
ICS 202			

## ORGANIZATION ASSIGNMENT LIST (ICS 203)

<b>1. Incident Name:</b> Monument Fire South Zone		<b>2. Operational Period: Date From:</b> 9/1/2021 Time From: 0700		<b>Date To:</b> 9/2/2021 Time To: 0700	
<b>3. Incident Commander(s) and Command Staff:</b>			<b>7. Operation Section:</b>		
IC/UC's	Mike Parkes / Chris Trindade (T)	Operations	Andy Turner		
Deputy	Todd Hopkins	Deputy Operations	Jim Hudson		
Safety Officer	Jack Piccinini / Tim Irwin	Night Ops	Steven Ward		
Information Officer	Scott McLean / Ken Haskett (T)	Staging Area			
Liaison Officer	Mike Urquides / John Davis	Branch	20	Chris Martinelli	
<b>4. Agency/Organization Representatives:</b>		Division/Group	DD / HH	Steve Chapman	
Agency/Organization	Name	Division/Group			
Cal Fire SHU	Dan Dennett	Division/Group			
Trinity Sheriffs Office	Bryan Ward	Division/Group			
CHP	Brandon Lale	Division/Group			
SPI	Herb Baldwin	Branch	30	J. Macomb / J. Greenberg (T)	
PG&E	David Hotchkiss	Division/Group	NN	Nickolas Ciapponi	
CDCR	Byron Connor	Division/Group	RR	Hight / Rushing / Niederberger	
CCC	Jose Murillo	Division/Group			
Wildfire Def. System	Ross Fillmore	Division/Group			
OES	Pat Titus	Division/Group			
CNA	Mason Chinowith	Branch	Contingency	Bryan Farrell 12HR	
DOT / DIST. 1	Tom Fitzgerald	Division/Group	South Cont 1	Levi Randolph 12HR	
DOT / DIST. 2	Eric Akana	Division/Group	South Cont 2	Mike Watner 12HR	
		Division/Group			
		Division/Group			
		Division/Group			
		Branch			
		Staging Area	Hayfork	Brandyn Labrue 12HR	
<b>5. Planning Section:</b>		Division/Group			
Chief	Ryan Davis / David Wood (T)	Division/Group			
Deputy	Sean Griffiths	Division/Group			
Resource Unit	McCarroll / Holliday (T) / Roland (T)	Division/Group			
Situation Unit	SeLegue / Day / Scheeline (T)	Branch			
Documentation Unit	Kim Moore / Vicki Day	Division/Group	FSR	Jed Washburn 12HR	
Demobilization Unit	Greg Barnhart	Division/Group			
GISS	Matt Turner	Division/Group			
FBAN	Troy Velin	Division/Group			
IMET	Royce Fontenot	Division/Group			
Training Tech Spec	Morgan Madruga	<b>Air Operations Branch</b>		Director:	Niko Matteoli
Hired Equipment Tech Spec.	Danial Hu / Brian Bowman	Air Support Group Supervisor		Josh Faulkner	
Crew Tech Spec.		Air Tactical Group Supervisor			
<b>6. Logistics Section</b>		Helibase Manager		Gary Engen	
Chief	Tim Fitzgerald				
Supply Unit	Mike Worford	<b>8. Finance/Administration Section:</b>			
Facilities Unit	Heather Thurston / Josh Randol (T)	Chief	Tiffany Tracy		
Ground Support Unit	Steve Langston / Matt Bellows	Time Unit	Matt Rea / Heather Constable (T)		
Communications Unit	Chris Johns	Procurement Unit	Tammy Nolan		
Medical Unit	Josh Staley	Comp/Claims Unit	Bud Sullins		
Motel Unit	Angel Hendrie	Cost Unit	Mike Kennefic		
Food Unit	Steve Chapin				
<b>Prepared By: Name:</b>	David Wood	<b>Position/Title:</b>	PSC	<b>Signature:</b>	
<b>ICS 203</b>		<b>Date/Time:</b>	8/31/2021 2300 hours		



# Monument South Zone Fire Weather Forecast



**FORECAST NO:** 14  
**PREDICTION FOR:** Wed 0700 to Thu 0700  
**SHIFT DATE:** September 1, 2021  
**FORECAST ISSUED:** 2000 PDT August 31, 2021

**NAME OF FIRE:** Monument Fire  
**UNIT:** SHF  
**SIGNED:** *Royce Fontenot*  
 Incident Meteorologist

**WEATHER DISCUSSION:** Seasonal temperatures are expected today with humidity values falling into the mid-teens. Temperatures and low humidity values will be moderated somewhat in areas of dense smoke. Winds will be terrain driven today with an easterly/down canyon flow in the morning switching to a westerly/up canyon flow late in the afternoon before returning to an easterly flow around midnight. Terrain driven winds may be locally enhanced in areas with partial clearing. Humidity values will begin to recover shortly after sunset in lower elevations and after midnight along ridgetops.

### WEDNESDAY:

**WEATHER:** Smoke with areas of partial clearing in the afternoon.  
**MAX TEMPERATURES:** 85-89°F full sunshine, 78-83°F elsewhere under smoke.  
**MIN HUMIDITY:** 15-26%, highest values where heavy smoke lingers.  
**20 FT WINDS:** Ridges: E-ESE 4-6 mph with gusts to 8 mph. Winds increasing to 6-9 mph with gusts to 12 mph by 1100. Winds shifting to the W-WNW and becoming 8-12 mph gusts to 15 mph around 1500. Gusts to 20 mph on high ridges.  
Drainages: Branch 20: E/Down canyon 2-4 mph increasing to 4-6 mph 1200. Winds becoming W/Up canyon 4-6 mph gusts to 8 mph around 1600.  
Branch 30: E/Down canyon 2-4 mph increasing to 4-6 1200. Winds becoming west 4-7 mph gusts 10 mph around in Div RR and by 1800 in Div NN.  
**LAL:** 1  
**CWR:** 0%  
**MIXING HEIGHT:** 500 ft AGL increasing to 7,500 ft AGL in the afternoon.  
**TRANSPORT WIND:** Variable 5-10 mph.

### WEDNESDAY NIGHT:

**WEATHER:** Smoke, dense at times with low visibility.  
**MIN TEMPERATURES:** 48-58°F, warmest in thermal belts above 1000 feet.  
**MAX HUMIDITY:** Valley 60-70%. Ridges 40-55%  
**20 FT WINDS:** Ridges: W-WNW 8-12 mph with gusts 18 mph diminishing and becoming E-ESE 4-6 mph by 2300  
Drainages: W/Up Canyon winds 4-7 mph with gusts 10 mph becoming E/Down Canyon 3-5 mph by 2300.  
**LAL:** 1  
**CWR:** 0%  
**MIXING HEIGHT:** 7,500 ft AGL decreasing to 500 ft AGL overnight.  
**TRANSPORT WIND:** Variable 5-10 mph.

**Thursday/Friday Outlook:** Temperatures remain near seasonal values through Friday. Afternoon humidity values will remain in the mid-teens with moderate recoveries. Winds will remain in a typical diurnal wind pattern.

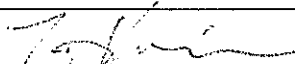
### RAWS Observations



### Submit Observation



# FIRE BEHAVIOR FORECAST

FORECAST NUMBER: 15	TYPE OF FIRE: Wildland Fire
FIRE NAME: Monument	OPERATIONAL PERIOD: 24hr 09-01-2021
DATE ISSUED: 08-31-2021	TIME ISSUED: 2100
UNIT: SHU	SIGNED:  Troy Velin - FBAN

## INPUTS

### WEATHER SUMMARY

Light Easterly and then West today.  
See Incident Weather Forecast in IAP

### FIRE BEHAVIOR:

**GENERAL:** *\*Fuels and Fire Behavior Advisory issued 07-17-2021\**

Topography is steep and rugged ranging from 2000' in the valleys and 6000' on higher peaks. Slope in many instances is 100%. This terrain promotes fire growth through roll out and slope reversal. Many of the drainages align with predominant wind patterns for the region. The Trinity River corridor is a major drainage that funnels wind primarily East and West. There are major bends in the river that will create eddy's and swirling winds.

Fuels in the fire area range from timber and timber understory in higher elevations, heavy brush in mid elevations and grass oak woodland in valley bottoms. Extreme Drought this year has stressed fuels to critical fuel moistures. 1000 hr fuels recorded July 15 were 7%, LFM in brush is now at 80%. The dryness of the fuels in the area are a major contributor to the Monument Fire's growth.

Fires in this area commonly have large growth periods of 1 to 2 days usually aided by windy conditions. Following the large growth periods there are usually several days of slowed growth due to heavy smoke inversions. This has been the scenario for the Monument Fire. September is generally hot and dry during the day and we begin to see more temperate overnight conditions.

### SPECIFIC:

#### Branch 20

Smoldering fire interior of the line. Monitor for roll out.

#### Branch 30

**DIV NN** – Minimal fire behavior under smoke inversion. Monitor Little Barker Creek for fire in the bottom to move up through the drainage with normal upslope winds. Fuels are light within the drainage, but movement is still possible.

**DIV RR** – It will be much different in the Little Creek drainage today. A return of East-Northeast winds will return to the area this morning. This puts the bottom half of the drainage in a downslope alignment with the general wind. This means winds parallel with the control line and fire from the upper portion of the drainage will move downslope and fill in the bottom of the creek drainage. Spots on the lee side of the ridge in Sections 32 and 33 may be sheltered except for the upper regions close to the ridge. Monitor the opening of the drainage at Hyampom road. This will be a likely area for spots across the road. By mid to late afternoon upcanyon West-Northwest winds will prevail, this will be a 180-degree wind shift in the prime burn hours.

#### South Zone Contingency

Be cautious operating equipment in critically dry fuels.

### AIR OPERATION:

Smoke is expected to be over most of the fire area today. Best chance for clearing is DIV RR

## SAFETY

Wind increases or changes direction... Easterly flow returns to the fire area today after several days without it. Monitor for spots and heat in places that have been relatively quiet. DIV RR is a funnel for winds

# Fuels and Fire Behavior Advisory

## Northern California

July 17, 2021



**Subject:** Potential for extreme fire behavior due to critically low live and dead fuel moistures, very dry conditions resulting from persistent drought, minimal snowpack and spring precipitation, and elevated fire danger rating values across much of northern California.

**Discussion:** Fires burning in northern California are exhibiting extreme fire growth based on critical fuel conditions. Fire spread is fuel driven and does not depend on wind to spread. Surface fuels are very receptive to embers. Long range spotting, area ignition, and group torching is occurring on large fires frequently.

**Difference from normal conditions:** Northern California is in a drought; currently with 90% at Extreme to Exceptional levels. The drought is expected to persist or intensify throughout the fire season. Deficient rainfall and snowpack with early melt off has resulted in fuels that are 4-6 weeks ahead of normal drying/curing rates.

### Concerns to Firefighters and the Public:

- Energy Release Component (ERC) at numerous weather stations set record maximums already this year and are running at or above the 97<sup>th</sup> percentile in most cases. Expect increased fire intensity and spread rates in these areas. Early season extreme fire behavior has been observed in both light and heavy fuels. **Anticipate increased spread rates, spotting, and active nighttime burning.**
- The combination of persistent drought and record-low rainfall and snowpack amounts has led to very low live and dead fuel moistures. Low 1000-hour fuel moistures have been evidenced by complete consumption of dead fuels on recent fires. Live fuel moistures in grasses, shrubs and trees, have already reached critical levels in many areas of Northern California due to limited green-up this spring. **Expect fires to ignite easier and spread faster. Do not expect fires to exhibit reduced fire behavior when entering areas of live fuels; anticipate increased spread rates and spotting.**
- Direct attack is often not feasible under regular diurnal wind conditions with ground resources. And aviation utilization is often insufficient in moderating rate of spread without immediate heavy ground resource response. **Anticipate higher resistance to control in all fuel types.**
- Already this year, Northern California has experienced large fire activity and multiple team deployments. California will likely experience an extended fire season. It is important to be mindful of and manage fatigue for all resources. **Everyone, every day, returns home safely.**

### Mitigation Measures:

- Local and inbound fire personnel need to be aware that fire behavior across the state is exceeding normal expectations for this time of the year. **Local briefings need to be thorough and highlight specific fire environment conditions. These include but are not limited to local weather forecasts, Pocket Cards, ERC's, live and dead fuel moistures.**
- Suppression actions need to be based on good anchor points, escape routes, and safety zones. **Remember LCES. Experienced lookouts are essential under these conditions.**
- Base all actions on current and expected behavior of the fire. **Augment initial attack resources as incident activity dictates.**

**Area of Concern:** Northern California except for the following Predictive Service Areas: North Coast and Bay Marine, west of Highway 101 in Mid-Coast to Mendocino and Diablo-Santa Cruz, and the north eastern portion of Far Eastside.



**INCIDENT:** Monument – CA SHF-001187

**DATE:** September 1, 2021

**TIME:** 0700-0700

**24 HOUR SAFETY EMPHASIS**  
**FIRING OPERATIONS – FATIGUE – COMPLACENCY**

**Firing Operations**

**Watch Out**

- Firing plan not communicated down the line
- Go-No-Go check list not followed or communicated
- Poor communications with division resources

**Mitigation**

- Ensure firing plan is understood by all before implementation
- Ensure Go-No-Go check list is adhered to and communicated up the line
- Confirm correct tactical frequency for firing operation with all personnel involved

**Fatigue**

**Watch Out**

- Impaired decision process or driving skills
- Poor physical output and motivation of assigned personnel
- Emotional stressors surfacing in anger or depression

**Mitigation**

- Spot check and monitor all personnel, ensure proper shade and rest is taking place
- Hydration and Nutrition are keys to energy stores in the body
- Monitor all personnel, ensure mental and physical health with adequate work/rest cycles

**Complacency**

**Watch Out**

- Improper or no PPE being used on the fire line
- Lack of awareness to safety or conditions on the fire
- Repeated assignments can lead to complacency making personnel more vulnerable to accidents

**Mitigation**

- Ensure all necessary PPE is always being utilized when appropriate
- Spot check personnel and reaffirm operational tactics and safety for the assignment
- Reassess usefulness of the personnel and ensure situational awareness is maintained

**Each Safety Message is designed for a daily Tailgate Safety discussion**

**REMAIN FIRE FOCUSED AND COVID-19 AWARE**

**David Esteves**



**IMT 5 SAFETY OFFICER**





## Monument South Zone RISK ANALYSIS (ICS 215a)



DIV	HAZARDOUS ACTIONS/CONDITIONS	MITIGATIONS / WARNINGS / REMEDIES
ALL	<b>FATIGUE/DEHYDRATION</b>	Be alert for signs of fatigue and take breaks as necessary. Monitor incoming resources for level of fatigue. Drink water before, during and after shifts, up to 1.5 gal. per shift. Be alert for signs of heat stress in yourself and others; use the buddy system. Eat small meals often and when possible. Find shade when you can. Drink electrolyte drinks at a 2 water to 1 sport drink ratio.
ALL	<b>HAZARD TREES/TREE FELLING SAFETY</b>	Look up, look down, look around when entering timber. Identify and isolate the area to provide for the safety of others. Flag and make proper notifications. Do not leave incomplete falling operations. Monitor when mopping up. Watch where you park. Size up and mitigate concerns, work within your qualifications.
RR	<b>FIRING OPERATIONS</b>	Have Firing Plan known to all and insure it is understood before implementation. Ensure Go-No-Go checklist is adhered to and communicated to operations. Confirm correct tactical frequency for firing operation. Communicate start and finish firing times to all personnel.
ALL	<b>COMPLACENCY</b>	Don't underestimate the task at hand. Wear full PPE while on the line. Everyone should be briefed on the conditions and circumstances regarding the fire and their assignments per the IRPG. Today is different than last shift, even if in the same area.
NN/RR	<b>INCREASING FIRE BEHAVIOR</b>	Know your LCES and maintain Situational Awareness. Use experienced Lookouts. Monitor weather for changes in the wind, temp, and RH during the shift. Have a contingency plan with established decision points and safety zones.
ICP Ground Support	<b>GENERAL TRAFFIC</b>	Watch out for pedestrian and vehicle congestion. Provide spotters when backing or driving in tight places. Adhere to the 5-mph speed limit while in base camp.
NN/RR	<b>AIRCRAFT OPERATIONS</b>	Monitor air-to-ground frequency, they are your eyes in the sky. Use air-to-ground frequency to communicate with aircraft. Use clear, concise statements when directing aircraft. Clear the area for incoming water and retardant drops.
NN/RR	<b>HEAVY EQUIPMENT</b>	Watch for rolling material avoid working below heavy equipment. Monitor safe working distances provide adequate working space. Utilize communication with the operators, stop if poor visibility (via radio)
ALL	<b>DRIVING HAZARDS</b>	Complete appropriate DOT daily vehicle inspection. <b>Slow Down!</b> Long travel times to the line, stay alert. Stop if fatigued. Drive defensively and responsibly, <b>not distracted or impaired.</b> Drive with headlights and seatbelts on. Narrow roads with limited passing room. Expect roads to deteriorate over the shift.
ALL	<b>COMMUNICATIONS</b>	Confirm correct tactical and command channel. No unassigned radio channels. Check your Air to Ground to make sure it is correct for your branch. Check your command and tactical frequencies if you have moved branches or divisions. Ensure correct communication with neighboring federal zones.
ALL	<b>COVID 19</b>	Wear a mask when applicable. Utilize hand sanitizer and wash hands frequently. Maintain social distancing. Disinfect apparatus and coolers frequently. Adhere to local, state and federal Covid-19 guidelines. Advise supervisor if you feel sick.
ALL	<b>DEMOBILIZATION</b>	Ensure a minimum of 8 hours of sleep off shift prior to leaving incident. Safe vehicle operation during demob, includes, safe speed, and the use of backing personnel when appropriate. Understand and communicate travel route before leaving the incident. Ensure all supplies are obtained prior to departure.
Jim Hudson, Operations Section Chief 		David Esteves, Safety Officer: 
		DATE PREPARED: <b>September 01, 2021</b> <b>Operation Period</b>



# ASSIGNMENT LIST (ICS 204 WF)

CONTROLLED UNCLASSIFIED  
INFORMATION//BASIC

<b>1. Incident Name:</b> <b>Monument Fire South Zone</b>	<b>2. Operational Period:</b> Date From: 09/01/21    Date To: 09/02/21 Time From: 0700    Time To: 0700	<b>3. Branch</b> <b>Division</b> <b>20</b> <b>DD / HH</b>
---	---	--

**4. Operations Personnel:** Page 1 of 1    Delta-Delta

Operations Section Chief: <b>Andy Turner</b>	Night Ops: <b>Steven Ward</b>
Branch Director: <b>Chris Martinelli 12HR</b>	Branch Safety: <b></b>
Division/Group Supervisor: <b>Steve Chapman</b>	Air Attack: <b></b>

5. Resources Assigned:		** Resources Below in Bold are 12 Hour **					
Resource Identifier	ALS	LWD	Leader	Personnel	Request #	Hours	Reporting Location
STC OES 1880C			GREG AVERY	22	E-10547	0700-0700	HWY 3 X HWY 299
T/F						0700-0700	HWY 3 X HWY 299
STG						0700-0700	HWY 3 X HWY 299
STG						0700-0700	HWY 3 X HWY 299
DOZ PVT E-10100 SIERRAVILLE			CHASE HAUBER	3	E-10100	0700-0700	HWY 3 X HWY 299
DOZ PVT E-10259 DIRECT			KEVIN FOX	2	E-10259	0700-0700	HWY 3 X HWY 299
<b>DOZ PVT 73 SHASTA</b>			<b>ROB STRIEFF</b>	<b>1</b>	<b>E-10305</b>	<b>0700-1900</b>	<b>HWY 3 X HWY 299</b>
W/T PVT E-10115 GRISWOLD			GARY GRISWOLD	2	E-10115	0700-0700	HWY 3 X HWY 299
W/T PVT E-10119 CLASS 1			DARRIN ENOCH	2	E-10119	0700-0700	HWY 3 X HWY 299
W/T PVT E-10132 GREER			IRA GREER	2	E-10132	0700-0700	HWY 3 X HWY 299
W/T PVT E-10276 D&G			GARY BROCK	2	E-10276	0700-0700	HWY 3 X HWY 299
<b>CHIP PVT E-10486 A CUT</b>			<b>JEFF BAKER</b>	<b>2</b>	<b>E-10486</b>	<b>0700-1900</b>	<b>HWY 3 X HWY 299</b>
HEQB						0700-0700	HWY 3 X HWY 299
HEQB						0700-0700	HWY 3 X HWY 299
<b>FALM PVT CAL VEG</b>			<b>DEREK STANDLEE</b>	<b>1</b>	<b>O-10357</b>	<b>0700-1900</b>	<b>HWY 3 X HWY 299</b>

**6. Work Assignments:**  
 Patrol.  
 Fall hazard trees that threaten control lines.  
 Pull hoselays.  
 Backhaul garbage and hose.

**7. Special Instructions:**  
 For emergency fueling please work with your Division to contact Monument fueling on Command.  
 REAF Cynthia Armentrout and REAF Anna Plumb will be working in Branch 20 Division DD/HH.

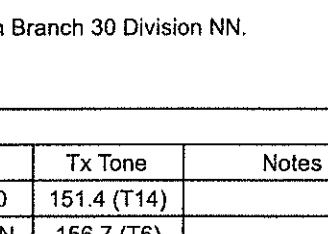
**8. Communications**

Name	Ch	Function	Rx Freq	Rx Tone	Tx Freq	Tx Tone	Notes
CDF C2	1	COMMAND	151.2650	103.5 (T8)	159.3300	151.4 (T14)	
VFIRE 23	4	TACTICAL	154.2950N	156.7 (T6)	154.2950N	156.7 (T6)	
CDF T25	14	AIR TO GROUND	159.2775	192.8 (T16)	159.2775	192.8 (T16)	AG TACTICAL
CALCORD	15	MEDICAL	156.0750N	156.7 (T6)	156.0750N	156.7 (T6)	MEDICAL COORDINATION
GUARD 31	16	AIRGUARD	168.6250N		168.6250N	110.9 (T1)	EMERGENCY USE ONLY

**9. Prepared by: Name:** Dana McCarroll    RESL    Signature:   
**ICS 204**    Date/Time: 8/31/2021 2200    Personnel Count: 39

# ASSIGNMENT LIST (ICS 204 WF)

CONTROLLED UNCLASSIFIED  
INFORMATION//BASIC

<b>1. Incident Name:</b> <b>Monument Fire South Zone</b>		<b>2. Operational Period:</b> Date From: 09/01/21    Date To: 09/02/21 Time From: 0700    Time To: 0700				<b>3. Branch</b> <b>30</b>		<b>Division</b> <b>NN</b>	
<b>4. Operations Personnel:</b>						Page 1 of 2    November-November			
Operations Section Chief: <b>Andy Turner</b>					Night Ops: <b>Steven Ward</b>				
Branch Director: <b>J. Macomb / J. Greenberg (T)</b>					Branch Safety:				
Division/Group Supervisor: <b>Nickolas Ciapponi</b>					Air Attack:				
<b>5. Resources Assigned:</b>		<b>** Resources Below in Bold are 12 Hour **</b>							
Resource Identifier	ALS	LWD	Leader	Personnel	Request #	Hours	Reporting Location		
STC HUU 9121C			DRIGGS, IVAN	16	E-10180	0700-0700	DP 33		
STC						0700-0700	DP 33		
T/F PVT BFA 6210			BRIAN PARHAM	14	E-10219	0700-0700	DP 33		
ENG PVT GCT 80			KEN DELYRIA	3	E-10506	0700-1900	DP 33		
ENG PVT SMOKEHOUND			CORY GRAHAM	3	E-10532	0700-1900	DP 33		
ENG PVT E3			ROBERT MCGIRR	3	E-10550	0700-1900	DP 33		
ENG FIF 612			RHETT BAILEY	5	E-10554	0700-1900	DP 33		
STG						0700-0700	DP 33		
STG						0700-0700	DP 33		
CRW HUU FORTUNA 1			ORLANDO PAYNE	16	C-10032	0700-0700	DP 33		
CRW						0700-0700	DP 33		
W/T PVT E-10114 TRAHAN			ROBERT LATHAM	1	E-10114	0700-1900	DP 33		
W/T PVT E-10127 CLOVIS			CORY CHERRY	1	E-10127	0700-1900	DP 33		
W/T PVT E-10133 PANKEY			CHAD PANKEY	2	E-10133	0700-0700	DP 33		
W/T PVT E-10201 WELLS			JEFF WELLS	1	E-10201	0700-1900	DP 33		
W/T PVT E-10293 CVR			PAUL CLEAVER	1	E-10293	0700-1900	DP 33		
W/T PVT E-10450 AMERICAN			VINCENT REALI	2	E-10450	0700-1900	DP 33		
CHIP						0700-1900	DP 33		
<b>6. Work Assignments:</b> Mop up 300' in from control line. Fall trees that will threaten control lines. Identify Heli-Spots. Backhaul all trash.									
<b>7. Special Instructions:</b> For emergency fueling please work with your Division to contact Monument fueling on Command. REAF Cynthia Armentrout, REAF Anna Plumb and ARCH Allison Young will be working in Branch 30 Division NN.									
<b>8. Communications</b>									
Name	Ch	Function	Rx Freq	Rx Tone	Tx Freq	Tx Tone	Notes		
CDF C2	1	COMMAND	151.2650	103.5 (T8)	159.3300	151.4 (T14)			
VFIRE 24	5	TACTICAL	154.2725N	156.7 (T6)	154.2725N	156.7 (T6)			
CDF T25	14	AIR TO GROUND	159.2775	192.8 (T16)	159.2775	192.8 (T16)	AVG TACTICAL		
CALCORD	15	MEDICAL	156.0750N	156.7 (T6)	156.0750N	156.7 (T6)	MEDICAL COORDINATION		
GUARD 31	16	AIRGUARD	168.6250N		168.6250N	110.9 (T1)	EMERGENCY USE ONLY		
<b>9. Prepared by: Name:</b>		Dana McCarroll			RESL		Signature: 		
<b>ICS 204</b>		Date/Time: 8/31/2021			2200		Personnel Count: 68		



## ASSIGNMENT LIST (ICS 204 WF)

CONTROLLED UNCLASSIFIED  
INFORMATION//BASIC

<b>1. Incident Name:</b> <b>Monument Fire South Zone</b>	<b>2. Operational Period:</b> Date From: 09/01/21    Date To: 09/02/21 Time From: 0700    Time To: 0700	<b>3. Branch</b> <b>Division</b> <b>30</b> <b>RR</b>
<b>4. Operations Personnel:</b>		Page 1 of 3    Romeo-Romeo

Operations Section Chief: <b>Andy Turner</b>	Night Ops: <b>Steven Ward</b>
Branch Director: <b>J. Macomb / J. Greenberg (T)</b>	Branch Safety:
Division/Group Supervisor: <b>Hight / Rushing / Niederberger</b>	Air Attack:

5. Resources Assigned:		** Resources Below in Bold are 12 Hour **					
Resource Identifier	ALS	LWD	Leader	Personnel	Request #	Hours	Reporting Location
STA OES 2800A			CHRIS HARPER	21	E-10353	0700-0700	DP 35
STC SHU 9245C			DENNIS BOIC	16	E-10184	0700-0700	DP 35
STC AEU 9270C			CHRIS PLACKE	17	E-10077	0700-0700	DP 35
STC MMU 9420C			ROBERT CARVALHO	17	E-10165	0700-0700	DP 35
<b>T/F MONUMENT 1</b>			<b>RAYMOND BARBER</b>		<b>E-9145</b>	<b>0700-1900</b>	<b>DP 35</b>
T/F EMAC WASH 1			ALEX HICKLEY	16	E-10343	0700-0700	DP 35
T/F EMAC WASH 2			NICH SACHA	17	E-10344	0700-0700	DP 35
ENG PVT NM 805			BRETT BOWER	3	E-10307	0700-1900	DP 35
ENG BRS 464			JAMES MARTINEZ	3	E-10507	0700-1900	DP 35
ENG BIA 441			DERRICK TINNO	3	E-10508	0700-1900	DP 35
ENG BLM 8603			MATT SPECHT	3	E-10533	0700-1900	DP 35
ENG GBF 69			DAVIS GRASS	3	E-10552	0700-1900	DP 35
STG HUU 9124G			ED PEEBLES	26	C-10033	0700-0700	DP 35
STG SHU 9244G			ANTHONY PESCIATORE	34	C-10007	0700-0700	DP 35
STG BDU 9352G			DAVE NISH	37	C-10053	0700-0700	DP 35
STG						0700-0700	DP 35
STG						0700-0700	DP 35
DOZ NEU 2340			KATY MCMANUS	2	E-10164	0700-0700	DP 35

**6. Work Assignments:**  
 Construct control lines as direct as possible.  
 Improve direct fire line. Mop up 300' in from control line.  
 Fall hazard trees and trees that threaten control lines.  
 Plan secondary control lines, begin if possible.

**7. Special Instructions:**  
 For emergency fueling please work with your Division to contact Mounument fueling on Command.  
 Roads are becoming soft please stay on the high side of the road.  
 REAF Forest Coots, ARCH Joe Stokes and ARCH Allison Young will be working in Branch 30 Division RR.

**8. Communications**

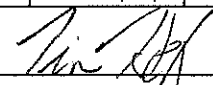
Name	Ch	Function	Rx Freq	Rx Tone	Tx Freq	Tx Tone	Notes
CDF C2	1	COMMAND	151.2650	103.5 (T8)	159.3300	151.4 (T14)	
CDF C11 (T11)	3	COMMAND	151.1675	103.5 (T8)	159.3975	114.8 (T11)	FOR RR ONLY
CDF T25	14	AIR TO GROUND	159.2775	192.8 (T16)	159.2775	192.8 (T16)	AVG TACTICAL
CALCORD	15	MEDICAL	156.0750N	156.7 (T6)	156.0750N	156.7 (T6)	MEDICAL COORDINATION
GUARD 31	16	AIRGUARD	168.6250N		168.6250N	110.9 (T1)	EMERGENCY USE ONLY

**9. Prepared by: Name:** Dana McCarroll    RESL    Signature: \_\_\_\_\_

**ICS 204**    Date/Time: 8/31/2021 2200    Personnel Count: 218

# ASSIGNMENT LIST (ICS 204 WF)

CONTROLLED UNCLASSIFIED  
INFORMATION/BASIC

<b>1. Incident Name:</b> <b>Monument Fire South Zone</b>		<b>2. Operational Period:</b> Date From: 09/01/21    Date To: 09/02/21 Time From: 0700    Time To: 0700				<b>3. Branch</b> <b>30</b>		<b>Division</b> <b>RR</b>	
<b>4. Operations Personnel:</b>						Page 2 of 3		Romeo-Romeo	
Operations Section Chief: <b>Andy Turner</b>					Night Ops: <b>Steven Ward</b>				
Branch Director: <b>J. Macomb / J. Greenberg (T)</b>					Branch Safety:				
Division/Group Supervisor: <b>Hight / Rushing / Niederberger</b>					Air Attack:				
<b>5. Resources Assigned:</b>		<b>** Resources Below in Bold are 12 Hour **</b>							
Resource Identifier	ALS	LWD	Leader	Personnel	Request #	Hours	Reporting Location		
DOZ TGU 2540			CHARLES BRYANT	3	E-10546	0700-0700	DP35		
DOZ MVU 3345			MARTY ADAMS	2	E-10543	0700-0700	DP35		
DOZ PVT E-10090 T & S			SEBASTIAN MAYNARD	2	E-10090	0700-0700	DP35		
DOZ PVT E-10097 JOHNSON			MATT JOHNSON	2	E-10097	0700-0700	DP35		
DOZ PVT E-10104 A&CC			CLYTON MOORE	2	E-10104	0700-0700	DP35		
W/T PVT E-10006 BURGESS			DAVID BURGESS	1	E-10006	0700-0700	DP35		
<b>W/T PVT E-10011 HARRIS</b>			<b>JOHN ZAUBIRER</b>	1	<b>E-10011</b>	<b>0700-1900</b>	<b>DP35</b>		
W/T PVT E-10116 5 STAR			ASA BENNETT	1	E-10116	0700-0700	DP35		
W/T PVT E-10118 DUNLAP			DAVID POLE	2	E-10118	0700-0700	DP35		
<b>W/T PVT E-10120 CLASS 1</b>			<b>CRAIG TARELLO</b>	1	<b>E-10120</b>	<b>0700-1900</b>	<b>DP35</b>		
<b>W/T PVT E-10122 FIRE WATER</b>			<b>DANA CLEER</b>	1	<b>E-10122</b>	<b>0700-1900</b>	<b>DP35</b>		
W/T PVT E-10129 GASSAWAY			JULIO LOPEZ	2	E-10129	0700-0700	DP35		
W/T PVT E-10285 SAGE			KAELUN KARMEN	2	E-10285	0700-0700	DP35		
HEQB						0700-0700	DP35		
HEQB						0700-0700	DP35		
FALM PVT BUNDY'S					<b>O-10139</b>	<b>0700-1900</b>	<b>DP35</b>		
FALM PVT CTS VENTURES				2	<b>O-10358</b>	<b>0700-1900</b>	<b>DP35</b>		
FALM PVT HUGHES				2	<b>O-10359</b>	<b>0700-1900</b>	<b>DP35</b>		
<b>6. Work Assignments:</b>									
Construct control lines as direct as possible.									
Improve direct fire line. Mop up 300' in from control line.									
Fall hazard trees and trees that threaten control lines.									
Plan secondary control lines, begin if possible.									
<b>7. Special Instructions:</b>									
For emergency fueling please work with your Division to contact Mounument fueling on Command.									
Roads are becoming soft please stay on the high side of the road.									
REAF Forrest Coots, ARCH Joe Stokes and ARCH Allison Young will be working in Branch 30 DIV RR									
<b>8. Communications</b>									
Name	Ch	Function	Rx Freq	Rx Tone	Tx Freq	Tx Tone	Notes		
CDF C2	1	COMMAND	151.2650	103.5 (T8)	159.3300	151.4 (T14)			
CDF C11 (T11)	3	COMMAND	151.1675	103.5 (T8)	159.3975	114.8 (T11)	FOR RR ONLY		
CDF T25	14	AIR TO GROUND	159.2775	192.8 (T16)	159.2775	192.8 (T16)	A/G TACTICAL		
CALCORD	15	MEDICAL	156.0750N	156.7 (T6)	156.0750N	156.7 (T6)	MEDICAL COORDINATION		
GUARD 31	16	AIRGUARD	168.6250N		168.6250N	110.9 (T1)	EMERGENCY USE ONLY		
<b>9. Prepared by: Name:</b> Dana McCarroll    RESL									
					Signature: 				
<b>ICS 204</b>		Date/Time: 8/31/2021 2200			Personnel Count: 26				

NIMS IAP

CONTROLLED UNCLASSIFIED INFORMATION/BASIC





# ASSIGNMENT LIST (ICS 204 WF)

CONTROLLED UNCLASSIFIED  
INFORMATION/BASIC

<b>1. Incident Name:</b> <b>Monument Fire South Zone</b>	<b>2. Operational Period:</b> Date From: 09/01/21    Date To: 09/02/21 Time From: 0700    Time To: 0700	<b>3. Branch</b> <b>Division</b> <b>Contingency</b> <b>South Cont 1</b>
<b>4. Operations Personnel:</b>		Page 1 of 1

Operations Section Chief: <b>Andy Turner</b>	Night Ops: <b>Steven Ward</b>
Branch Director: <b>Bryan Farrell 12HR</b>	Branch Safety:
Division/Group Supervisor: <b>Levi Randolph 12HR</b>	Air Attack:

5. Resources Assigned:	** Resources Below in Bold are 12 Hour **							
Resource Identifier	ALS	LWD	Leader	Personnel	Request #	Hours	Reporting Location	
<b>ENG J3 CONTRACTING</b>			<b>SHAWN MODICA</b>	3	<b>E-10308</b>	<b>0700-1900</b>	ICP	
DOZ PVT E-10095 MN MILLER			LELLO MARTINEZ	2	E-10095	0700-0700	ICP	
DOZ PVT E-10099 MULLER			CHARLES MULLER	2	E-10099	0700-0700	ICP	
DOZ PVT E-10106 K5 RANCH			JAMES KLAUER	2	E-10106	0700-0700	ICP	
DOZ PVT E-10107 K5 RANCH			MITCH GILS	2	E-10107	0700-0700	ICP	
DOZ PVT E-10109 PEARSON			JIMMY LUST	2	E-10109	0700-0700	ICP	
<b>DOZ PVT E-10110 LEWIS</b>			<b>TYLER LEWIS</b>	2	<b>E-10110</b>	<b>0700-1900</b>	ICP	
DOZ						0700-0700	ICP	
DOZ						0700-0700	ICP	
<b>W/T PVT E-10131 PALMER</b>			<b>STANLEY MIRANDA</b>	1	<b>E-10131</b>	<b>0700-1900</b>	ICP	
<b>MAST PVT E-10156 STONE FLY</b>			<b>MICHAEL PURENI</b>	1	<b>E-10156</b>	<b>0700-1900</b>	ICP	
MAST						0700-0700	ICP	
SKID						0700-0700	ICP	
FELB						0700-1900	ICP	
FELB						0700-1900	ICP	
<b>HEQB POBURKO</b>			<b>JASON POBURKO</b>	1		<b>0700-1900</b>	ICP	
HEQB						0700-0700	ICP	
<b>FALM PVT KLEE TREE</b>			<b>JASON KLEE</b>	2	<b>O-10138</b>	<b>0700-1900</b>	ICP	
<b>FALM PVT GARTH FOSTER</b>			<b>GARTH FOSTER</b>	1	<b>O-10140</b>	<b>0700-1900</b>	ICP	

**6. Work Assignments:**  
 Construct contingency line.  
 Construct control line as needed.  
 Fall hazard trees and trees that will threaten control line.  
 Improve contingency line previously completed.

**7. Special Instructions:**  
 REAF Andrew Christie and REAF Rudy Uribe will be working in Contingency South I.

**8. Communications**

Name	Ch	Function	Rx Freq	Rx Tone	Tx Freq	Tx Tone	Notes
CDF C2	1	COMMAND	151.2650	103.5 (T8)	159.3300	151.4 (T14)	
CDF T27	7	TACTICAL	159.3075N	192.8 (T16)	159.3075N	192.8 (T16)	
CDF T25	14	AIR TO GROUND	159.2775	192.8 (T16)	159.2775	192.8 (T16)	A/G TACTICAL
CALCORD	15	MEDICAL	156.0750N	156.7 (T6)	156.0750N	156.7 (T6)	MEDICAL COORDINATION
GUARD 31	16	AIRGUARD	168.6250N		168.6250N	110.9 (T1)	EMERGENCY USE ONLY

<b>9. Prepared by: Name:</b>	Dana McCarroll	RESL	Signature:
<b>ICS 204</b>	Date/Time: 8/31/2021 2200	Personnel Count: 21	

# ASSIGNMENT LIST (ICS 204 WF)

CONTROLLED UNCLASSIFIED  
INFORMATION//BASIC

<b>1. Incident Name:</b> <b>Monument Fire South Zone</b>	<b>2. Operational Period:</b> Date From: 09/01/21    Date To: 09/02/21 Time From: 0700            Time To: 0700	<b>3. Branch</b> <b>Division</b> <b>Contingency</b> <b>South Cont 2</b>
---	---	--

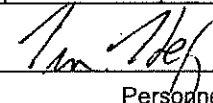
<b>4. Operations Personnel:</b>		Page 1 of 1
Operations Section Chief: <b>Andy Turner</b>	Night Ops: <b>Steven Ward</b>	
Branch Director: <b>Bryan Farrell 12HR</b>	Branch Safety:	
Division/Group Supervisor: <b>Mike Watner 12HR</b>	Air Attack:	

5. Resources Assigned:	** Resources Below in Bold are 12 Hour **							
Resource Identifier	ALS	LWD	Leader	Personnel	Request #	Hours	Reporting Location	
DOZ MEU 1145			MATT WILSON	4	E-10548	0700-0700	ICP	
DOZ PVT E-10102 CHUCK FRY			CHUCK FRY	2	E-10102	0700-0700	ICP	
DOZ PVT E-10103 MEEKER			JONATHAN MEEKER	2	E-10103	0700-0700	ICP	
DOZ PVT E-10108 SAGE			CARMEN, KAE LUM	4	E-10108	0700-0700	ICP	
DOZ PVT E-10174 COTTON			MIKE STAHEL	2	E-10174	0700-0700	ICP	
W/T PVT E-10005 JOHNSON			DAVE LAMAR	1	E-10005	0700-1900	ICP	
W/T PVT E-10289 Act Fast			ANGELO CATTANEO	1	E-10289	0700-1900	ICP	
MAST						0700-1900	ICP	
MAST						0700-1900	ICP	
MAST						0700-1900	ICP	
CHIP						0700-1900	ICP	
SKID						0700-1900	ICP	
FELB						0700-1900	ICP	
HEQB						0700-0700	ICP	
HEQB						0700-0700	ICP	
FALM PVT NIGHT FIRE			ANDREW DUROCHER	1	O-10137	0700-1900	ICP	

Construct contingency line.  
Plan secondary control lines, begin if possible.  
Fall hazard trees.  
Construct safety islands.

**7. Special Instructions:**  
REAF Andrew Christie and REAF Rudy Uribe will be working in Contingency South 2.

8. Communications							
Name	Ch	Function	Rx Freq	Rx Tone	Tx Freq	Tx Tone	Notes
CDF C2	1	COMMAND	151.2650	103.5 (T8)	159.3300	151.4 (T14)	
CDF T28	8	TACTICAL	151.1825	192.8 (T16)	151.1825	192.8 (T16)	
CDF T25	14	AIR TO GROUND	159.2775	192.8 (T16)	159.2775	192.8 (T16)	A/G TACTICAL
CALCORD	15	MEDICAL	156.0750N	156.7 (T6)	156.0750N	156.7 (T6)	MEDICAL COORDINATION
GUARD 31	16	AIRGUARD	168.6250N		168.6250N	110.9 (T1)	EMERGENCY USE ONLY

**9. Prepared by: Name:** Dana McCarroll                      RESL                      Signature: 

**ICS 204**                      Date/Time: 8/31/2021 2200                      Personnel Count: 17

# ASSIGNMENT LIST (ICS 204 WF)

CONTROLLED UNCLASSIFIED  
INFORMATION/BASIC

<b>1. Incident Name:</b> <b>Monument Fire South Zone</b>	<b>2. Operational Period:</b> Date From: 09/01/21    Date To: 09/02/21 Time From: 0700    Time To: 0700	<b>3. Branch</b> <b>Division</b>  <b>FSR</b>
---	---	--

**4. Operations Personnel:** Page 1 of 2

Operations Section Chief: <b>Andy Turner</b>	Night Ops: <b>Steven Ward</b>
Branch Director:	Branch Safety:
Division/Group Supervisor: <b>Jed Washburn 12HR</b>	Air Attack:

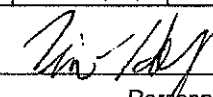
5. Resources Assigned:		** Resources Below in Bold are 12 Hour **					
Resource Identifier	ALS	LWD	Leader	Personnel	Request #	Hours	Reporting Location
DOZ PVT E-10112 DAVIS			<b>LELAND DAVIS</b>	1	<b>E-10112</b>	<b>0700-1900</b>	<b>HAYFORK STAGING</b>
DOZ PVT E-10438 PACKWAY			<b>RICHARD HATHAWAY</b>	3	<b>E-10438</b>	<b>0700-1900</b>	<b>HAYFORK STAGING</b>
DOZ PVT E-10439 SCHREDER			<b>CORY HALL</b>	4	<b>E-10439</b>	<b>0700-1900</b>	<b>HAYFORK STAGING</b>
DOZ PVT E-10440 SUNRISE			<b>JOHN WILLIAMS</b>	2	<b>E-10440</b>	<b>0700-1900</b>	<b>HAYFORK STAGING</b>
DOZ						<b>0700-1900</b>	<b>HAYFORK STAGING</b>
W/T PVT E-10117 MCGARR			<b>DENNIS MCGARR</b>	1	<b>E-10117</b>	<b>0700-1900</b>	<b>HAYFORK STAGING</b>
W/T PVT E-10124 IGRAM			<b>RYAN GRABLE</b>	1	<b>E-10124</b>	<b>0700-1900</b>	<b>HAYFORK STAGING</b>
W/T PVT E-10128 ON SITE			<b>RICK WALTON</b>	1	<b>E-10128</b>	<b>0700-1900</b>	<b>HAYFORK STAGING</b>
W/T PVT E-10130 H2O			<b>GARRETT MCINNIS</b>	2	<b>E-10130</b>	<b>0700-1900</b>	<b>HAYFORK STAGING</b>
W/T PVT E-10281 CONCRETE			<b>SCOTT HEAD</b>	2	<b>E-10281</b>	<b>0700-1900</b>	<b>HAYFORK STAGING</b>
W/T PVT E-10291 ZABEL			<b>FRANK ZABEL</b>	1	<b>E-10291</b>	<b>0700-1900</b>	<b>HAYFORK STAGING</b>
W/T PVT E-10452 CSURE			<b>RON LANDSBURG</b>	2	<b>E-10452</b>	<b>0700-1900</b>	<b>HAYFORK STAGING</b>
MAST PVT E-10155 BUNDYS			<b>NICK BUNDY</b>	1	<b>E-10155</b>	<b>0700-1900</b>	<b>HAYFORK STAGING</b>
MAST PVT E-10356 RJW			<b>WADE FIELDS</b>	1	<b>E-10356</b>	<b>0700-1900</b>	<b>HAYFORK STAGING</b>
MAST PVT E-10357 RJW			<b>WADE FIELDS</b>	1	<b>E-10357</b>	<b>0700-1900</b>	<b>HAYFORK STAGING</b>
MAST PVT E-10368 JOHNS			<b>VIRGIL JOHNS</b>	1	<b>E-10368</b>	<b>0700-1900</b>	<b>HAYFORK STAGING</b>
MAST PVT E-10437 SUNRISE			<b>BRANDON WILLIAMS</b>	2	<b>E-10437</b>	<b>0700-1900</b>	<b>HAYFORK STAGING</b>
MAST PVT E-10454 INGRAM			<b>MARK ESCALERA</b>	2	<b>E-10454</b>	<b>0700-1900</b>	<b>HAYFORK STAGING</b>

**6. Work Assignments:**  
 Rehab dozerline.  
 Repair crossings.

**7. Special Instructions:**

**8. Communications**

Name	Ch	Function	Rx Freq	Rx Tone	Tx Freq	Tx Tone	Notes
CDF C2	1	COMMAND	151.2650	103.5 (T8)	159.3300	151.4 (T14)	
CDF T15	9	TACTICAL	159.2700	192.8 (T16)	159.2700	192.8 (T16)	
CDF T25	14	AIR TO GROUND	159.2775	192.8 (T16)	159.2775	192.8 (T16)	AVG TACTICAL
CALCORD	15	MEDICAL	156.0750N	156.7 (T6)	156.0750N	156.7 (T6)	MEDICAL COORDINATION
GUARD 31	16	AIRGUARD	168.6250N		168.6250N	110.9 (T1)	EMERGENCY USE ONLY

**9. Prepared by: Name:** Dana McCarroll    RESL    Signature: 

ICS 204    Date/Time: 8/31/2021 2200    Personnel Count: 28

# ASSIGNMENT LIST (ICS 204 WF)

CONTROLLED UNCLASSIFIED  
INFORMATION//BASIC

<b>1. Incident Name:</b> <b>Monument Fire South Zone</b>	<b>2. Operational Period:</b> Date From: 09/01/21    Date To: 09/02/21 Time From: 0700    Time To: 0700	<b>3. Branch</b> <b>Division</b>  <b>FSR</b>
<b>4. Operations Personnel:</b>		Page 2 of 2

Operations Section Chief: <b>Andy Turner</b>	Night Ops: <b>Steven Ward</b>
Branch Director:	Branch Safety:
Division/Group Supervisor: <b>Jed Washburn 12HR</b>	Air Attack:

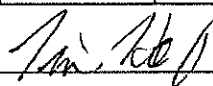
5. Resources Assigned:	** Resources Below in Bold are 12 Hour **						
Resource Identifier	ALS	LWD	Leader	Personnel	Request #	Hours	Reporting Location
<b>EXC PVT E-10446 TWO BRO'S</b>			<b>STEVE CLARK</b>	<b>1</b>	<b>E-10446</b>	<b>0700-1900</b>	<b>HAYFORK STAGING</b>
<b>EXC PVT E-10484 WALBERG</b>							<b>HAYFORK STAGING</b>
<b>CHIP PVT E-10485 BUNDY</b>			<b>JUSTIN GARRET</b>	<b>2</b>	<b>E-10485</b>	<b>0700-1900</b>	<b>HAYFORK STAGING</b>

**6. Work Assignments:**  
 Rehab dozerline.  
 Repair crossings.

**7. Special Instructions:**

**8. Communications**

Name	Ch	Function	Rx Freq	Rx Tone	Tx Freq	Tx Tone	Notes
CDF C2	1	COMMAND	151.2650	103.5 (T8)	159.3300	151.4 (T14)	
CDF T15	9	TACTICAL	159.2700	192.8 (T16)	159.2700	192.8 (T16)	
CDF T25	14	AIR TO GROUND	159.2775	192.8 (T16)	159.2775	192.8 (T16)	AVG TACTICAL
CALCORD	15	MEDICAL	156.0750N	156.7 (T6)	156.0750N	156.7 (T6)	MEDICAL COORDINATION
GUARD 31	16	AIRGUARD	168.6250N		168.6250N	110.9 (T1)	EMERGENCY USE ONLY

<b>9. Prepared by: Name:</b>	Dana McCarroll	RESL	Signature: 
<b>ICS 204</b>	Date/Time: 8/31/2021 2200		Personnel Count: 3

# ASSIGNMENT LIST (ICS 204 WF)

CONTROLLED UNCLASSIFIED  
INFORMATION//BASIC

<b>1. Incident Name:</b> <b>Monument Fire South Zone</b>	<b>2. Operational Period:</b> Date From: 09/01/21    Date To: 09/02/21 Time From: .0700        Time To: 0700	<b>3. Branch</b> <b>Staging</b>  <b>Hayfork</b>
---	--	---

**4. Operations Personnel:** Page 1 of 1

Operations Section Chief: <b>Andy Turner</b>	Night Ops: <b>Steven Ward</b>
Branch Director:	Branch Safety:
Division/Group Supervisor: <b>Brandyn Labrue 12HR</b>	Air Attack:

5. Resources Assigned:	** Resources Below in Bold are 12 Hour **							
Resource Identifier	ALS	LWD	Leader	Personnel	Request #	Hours	Reporting Location	
DOZ PVT E-10093 SGS			<b>ERIC HEFTE</b>	1	<b>E-10093</b>	<b>0700-1900</b>	<b>HAYFORK STAGING</b>	
W/T PVT E-10007 ROGERS			<b>DAN BRADY</b>	1	<b>E-10007</b>	<b>0700-1900</b>	<b>HAYFORK STAGING</b>	
W/T PVT E-10125 JOHNSON			KEN JOHNSON	2	E-10125	0700-0700	HAYFORK STAGING	
W/T PVT E-10202 TULE RIVER			<b>KEVIN FRANCO</b>	1	<b>E-10202</b>	<b>0700-1900</b>	<b>HAYFORK STAGING</b>	

**6. Work Assignments:**

**7. Special Instructions:**

**8. Communications**

Name	Ch	Function	Rx Freq	Rx Tone	Tx Freq	Tx Tone	Notes
CDF C2	1	COMMAND	151.2650	103.5 (T8)	159.3300	151.4 (T14)	
CDF T25	14	AIR TO GROUND	159.2775	192.8 (T16)	159.2775	192.8 (T16)	A/G TACTICAL
CALCORD	15	MEDICAL	156.0750N	156.7 (T6)	156.0750N	156.7 (T6)	MEDICAL COORDINATION
GUARD 31	16	AIRGUARD	168.6250N		168.6250N	110.9 (T1)	EMERGENCY USE ONLY

**9. Prepared by: Name:** Dana McCarroll                      RESL                      Signature: \_\_\_\_\_

ICS 204                      Date/Time: 8/31/2021 2200                      Personnel Count: 5

# ASSIGNMENT LIST (ICS 204 WF)

CONTROLLED UNCLASSIFIED  
INFORMATION/BASIC

<b>1. Incident Name:</b> <b>MONUMENT FIRE</b>		<b>2. Operational Period:</b> Date From: 09/01/21    Date To: 09/02/21 Time From: 0700    Time To: 0700				<b>3. Branch</b> <b>10</b>		<b>Division</b> <b>U</b>	
<b>4. Operations Personnel:</b>						Page 1 of 2		Uniform	
Operations Section Chief: <b>Don Fregulia</b> Branch Director: <b>Kim Olson</b> Division/Group Supervisor: <b>Jimmy Hidalgo</b>					Night Ops: <b>Corey Rose, Jesse Knox(T)</b> Branch Safety: Air Attack:				
<b>5. Resources Assigned:</b>			<b>** Resources Below in Bold are 12 Hour **</b>						
Resource Identifier	ALS	LWD	Leader	Personnel	Request #	Hours	Reporting Location		
HC1 LEWIS & CLARK IHC		9/10	<b>NICK WYDRE</b>	21	<b>C-118</b>	0700-1900	<b>Weaverville Camp</b>		
HC2IA FIRESTORM 15A		9/14	<b>BEN PAVAN</b>	20	<b>C-5</b>	0700-1900	<b>Weaverville Camp</b>		
HC2 PVT R&R CONTRACTING 99		9/5	<b>ASUBENE AGUILERA</b>	20	<b>C-99</b>	0700-1900	<b>Weaverville Camp</b>		
WFM1 BLACK TOOTH WFM		9/11	<b>CONNOR ERICKSON</b>	10	<b>O-830</b>	0700-1900	<b>Weaverville Camp</b>		
SMOD DENVER SUPPRESSION		9/13		11	<b>O-828</b>	0700-1900	<b>Weaverville Camp</b>		
ENG3 JUNCTION CITY 2531		9/4	<b>JUSTIN KERWICK</b>	3	<b>E-44</b>	0700-1900	<b>Weaverville Camp</b>		
ENG3 PVT BLACK RANGE ENTERPRISES		9/20	<b>TIMOTHY PEARSON</b>	3	<b>E-674</b>	0700-1900	<b>Weaverville Camp</b>		
ENG6 PVT BLAZE RUNNER 06		9/21	<b>JOHN VINCENT</b>	3	<b>E-595</b>	0700-1900	<b>Weaverville Camp</b>		
DO22 PVT BUD GARMAN CONSTRUCTION		9/9	<b>JEREMY SNEED</b>	1	<b>E-632</b>	0700-1900	<b>Weaverville Camp</b>		
DO23 PVT C M CONSTRUCTION		9/7	<b>STEVEN EDSALL</b>	2	<b>E-481</b>	0700-1900	<b>Weaverville Camp</b>		
WTT1 ROCK CREEK		9/2	<b>TIM DANIEL</b>	2	<b>E-80</b>	0700-1900	<b>Weaverville Camp</b>		
WTS2 FORTNER EXCAVATION 24		9/11	<b>DANIEL JONES</b>	1	<b>E-24</b>	0700-1900	<b>Weaverville Camp</b>		
WTS2 GLENN'S TENS EQUIPMENT		9/11	<b>ROBERT MESSNER</b>	1	<b>E-638</b>	0700-1900	<b>Weaverville Camp</b>		
WTS2 PVT K.K.'S WATER SERVICE		9/10	<b>ZACH SHINKLE</b>	1	<b>E-688</b>	0700-1900	<b>Weaverville Camp</b>		
FALM PVT REDWOOD EMPIRE		9/1	<b>JESSE GONZALEZ</b>	2	<b>O-86</b>	0700-1900	<b>Weaverville Camp</b>		
MAST PVT HIGH POWER ENTERPRISES		9/9	<b>MARSHALL COX</b>	2	<b>E-486</b>	0700-1900	<b>Weaverville Camp</b>		
SKG2 LET-ER-BUCK 385		9/9	<b>DAREN WARD</b>	2	<b>E-385</b>	0700-1900	<b>Weaverville Camp</b>		
PVT PUMPZILLA 2 TRINITY		9/8	<b>JOHN VELEZ</b>	2	<b>S-21</b>	0700-1900	<b>Weaverville Camp</b>		
<b>6. Work Assignments:</b>									
<ul style="list-style-type: none"> <li>- Keep the fire west of the North Fork of the Trinity River.</li> <li>- Continue prep on Hobo Gulch Road, Backbone Ridge Trail and contingency line between East Fork Road and Canyon Creek Road.</li> <li>- Maintain a presence on Highway 299 and Dutch Creek Road.</li> <li>- Support CAL FIRE Division DD as necessary.</li> <li>- Scout for indirect line control options east of the East Fork of the Trinity River.</li> </ul>									
<b>7. Special Instructions:</b>									
<b>8. Communications</b>									
Name	Ch	Function	Rx Freq	Rx Tone	Tx Freq	Tx Tone	Notes		
CMD 1	1	COMMAND	173.8125N	107.2	168.4750N	107.2	CMD Located on Weaver Bally		
TAC 6	6	TACTICAL	168.0500N	107.2	168.0500N	107.2	NIGHT DIVISION A		
A/G CMD	12	A/G CMD	171.8625N		171.8625N		Incident A/G Command		
CALCORD	15	MEDICAL	156.0750N	156.7	156.0750N	156.7	(TONE 6)		
GUARD	16	AIRGUARD	168.6250N		168.6250N	110.9	EMERGENCY HAILING OF AIRCRAFT		
<b>9. Prepared by: Name:</b>									
Ryan Resnick, Harry Kelmanson, Marisa Williams(T), Kelly Smyth(T) John Hunter (T)				RESL		Signature: _____			
<b>ICS 204</b>		Date/Time: 8/31/2021 2200		Personnel Count: 107					

# ASSIGNMENT LIST (ICS 204 WF)

CONTROLLED UNCLASSIFIED  
INFORMATION/BASIC

<b>1. Incident Name:</b> <b>MONUMENT FIRE</b>	<b>2. Operational Period:</b> Date From: 09/01/21    Date To: 09/02/21 Time From: 0700    Time To: 0700	<b>3. Branch</b> <b>Division</b> <b>10</b> <b>U</b>
--	---	--

<b>4. Operations Personnel:</b> Operations Section Chief: <b>Don Fregulia</b> Branch Director: <b>Kim Olson</b> Division/Group Supervisor: <b>Jimmy Hidalgo</b>		Night Ops: <b>Corey Rose, Jesse Knox(T)</b> Branch Safety: Air Attack:
--	--	--

<b>5. Resources Assigned:</b>		<b>** Resources Below in Bold are 12 Hour **</b>					Hours	Reporting Location
Resource Identifier	ALS	LWD	Leader	Personnel	Request #			
TFLD FINNEGAN		9/3	<b>BRENDAN FINNEGAN</b>	1	<b>O-646</b>	0700-1900	Weaverville Camp	
TFLD DANIEL		9/3	<b>CHARLES DANIEL</b>	1	<b>O-950</b>	0700-1900	Weaverville Camp	
FELB(T) DUNCAN		9/11	<b>JARED DUNCAN</b>	1	<b>O-806</b>	0700-1900	Weaverville Camp	
EMTF BENNETT			<b>JARREN BENNETT</b>	1		0700-1900	Weaverville Camp	
EMPF GILMORE	X	9/10	<b>CODY GILMORE</b>	1	<b>O-781</b>	0700-1900	Weaverville Camp	
SOFR HARKER		9/4	<b>DANIEL HARKER</b>	1	<b>O-469</b>	0700-1900	Weaverville Camp	
REAF RADEMACHER		9/1	<b>ERIK RADEMACHER</b>	1	<b>O-57</b>	0700-1900	Weaverville Camp	
REAF BREITMUN		9/9	<b>MOLLY BREITMUN</b>	1	<b>O-325</b>	0700-1900	Weaverville Camp	
REAF BARTZOKIS		9/2	<b>KATHERINE BARTZOKIS</b>	1	<b>O-453</b>	0700-1900	Weaverville Camp	
ARCH SHAHEEN-MCCONNELL		9/8	<b>EO SHAHEEN-MCCONNE</b>	1	<b>O-624</b>	0700-1900	Weaverville Camp	
REAF MCFADIN		9/11	<b>MICHAEL MCFADIN</b>	1	<b>O-857</b>	0700-1900	Weaverville Camp	

**6. Work Assignments:**

- Keep the fire west of the North Fork of the Trinity River.
- Continue prep on Hobo Gulch Road, Backbone Ridge Trail and contingency line between East Fork Road and Canyon Creek Road.
- Maintain a presence on Highway 299 and Dutch Creek Road.
- Support CAL FIRE Division DD as necessary.
- Scout for indirect line control options east of the East Fork of the Trinity River.

**7. Special Instructions:**

<b>8. Communications</b>							
Name	Ch	Function	Rx Freq	Rx Tone	Tx Freq	Tx Tone	Notes
CMD 1	1	COMMAND	173.8125N	107.2	168.4750N	107.2	CMD Located on Weaver Bally
TAC 6	6	TACTICAL	168.0500N	107.2	168.0500N	107.2	NIGHT DIVISION A
A/G CMD	12	A/G CMD	171.8625N		171.8625N		Incident A/G Command
CALCORD	15	MEDICAL	156.0750N	156.7	156.0750N	156.7	(TONE 6)
GUARD	16	AIRGUARD	168.6250N		168.6250N	110.9	EMERGENCY HAILING OF AIRCRAFT

**9. Prepared by: Name:** Ryan Resnick, Harry Kelmanson, Marisa Williams(T), Kelly Smyth(T), John Hunter (T)      RESL      Signature: \_\_\_\_\_

ICS 204      Date/Time: 8/31/2021    2200      Personnel Count: 11

# ASSIGNMENT LIST (ICS 204 WF)

CONTROLLED UNCLASSIFIED  
INFORMATION//BASIC

<b>1. Incident Name:</b> <b>MONUMENT FIRE</b>		<b>2. Operational Period:</b> Date From: 09/01/21      Date To: 09/02/21 Time From: 0700              Time To: 0700				<b>3. Branch</b> <b>40</b>		<b>Division</b> <b>W</b>		
<b>4. Operations Personnel:</b>						Page 1 of 2		Whiskey		
Operations Section Chief: <b>Don Fregulia</b> Branch Director: <b>Gary Monday</b> Division/Group Supervisor: <b>Tim Ritchey, Logan Ballesteros(T)</b>				Night Ops: <b>Corey Rose, Jesse Knox(T)</b> Branch Safety: Air Attack:						
<b>5. Resources Assigned:</b>		<b>** Resources Below in Bold are 12 Hour **</b>								
Resource Identifier	ALS	LWD	Leader	Personnel	Request #	Hours	Reporting Location			
HC1 IDAHO CITY IHC		9/11	<b>BRIAN CORDOZA</b>	20	C-119	0700-1900	<b>BAR 717</b>			
HC2 FRANCO REFORESTATION		9/8	<b>ALBERTO FRANCO-QUEVDO</b>	20	C-116	0700-1900	<b>BAR 717</b>			
ENG3 CORTEZ FPD E23		9/11	<b>BRAD FINCH</b>	3	E-788	0700-1900	<b>Weaverville Camp</b>			
ENG6 ROCK SPRINGS E463		9/6	<b>JASON CRISTANELLI</b>	3	E-828	0700-1900	<b>Weaverville Camp</b>			
ENG6 PVT PEANUT PIE		9/6	<b>WADE VISSER</b>	3	E-662	0700-1900	<b>Weaverville Camp</b>			
ENG6 PVT TIMBER RIDGE FIRE LLC		9/8	<b>JEFF TODD</b>	3	E-664	0700-1900	<b>Weaverville Camp</b>			
ENG6 PVT LOOMIS FIRE		9/8	<b>JAMES DEGEN</b>	3	E-669	0700-1900	<b>Weaverville Camp</b>			
ENG6 PVT ALTERGOTT FORESTRY		9/6	<b>MARCIE MOORE</b>	3	E-666	0700-1900	<b>Weaverville Camp</b>			
DOZ3 PVT DIRT WORKS UNLIMITED		9/7	<b>TIM PAULEY</b>	1	E-480	0700-1900	<b>BAR 717</b>			
DOZ3 PVT ALVORD		9/7	<b>MATT DAVIS</b>	2	E-478	0700-1900	<b>Weaverville Camp</b>			
WTS2 PVT CRAIG MARTIN		9/7	<b>CRAIG MARTIN</b>	1	E-636	0700-1900	<b>Weaverville Camp</b>			
FALM PVT CHARLIE FALLERS		9/9	<b>TACOMA MANUEL</b>	2	O-785	0700-1900	<b>Weaverville Camp</b>			
CHIP2 PVT RAPID RESPONSE		9/9	<b>EVER SANDOVAL</b>	3	E-716	0700-1900	<b>Weaverville Camp</b>			
TFLD HYATT		9/6	<b>TODD HYATT</b>	1	O-653	0700-1900	<b>Weaverville Camp</b>			
EMPF RAYMOND		9/11	<b>JENNIFER RAYMOND</b>	1	O-850.1	0700-1900	<b>Weaverville Camp</b>			
EMTF ISON		9/11	<b>TY ISON</b>	1	O-850.2	0700-1900	<b>Weaverville Camp</b>			
SOFR KEOGH		9/7	<b>RYAN KEOGH</b>	1	O-418.64	0700-1900	<b>Weaverville Camp</b>			
REAF ARMENTROUT		9/5	<b>CYNTHIA ARMENTROUT</b>	1	O-688	0700-1900	<b>Weaverville Camp</b>			
<b>6. Work Assignments:</b>										
<ul style="list-style-type: none"> <li>- Monitor fires edge and keep fire north of Hyampom Road.</li> <li>- Continue to prepare Hyampom Road from Little Creek to Bar 717 to hold fire north of Hyampom Road.</li> <li>- Identify check lines to be constructed for potential future firing operations along and north of Hyampom Road.</li> </ul>										
<b>7. Special Instructions:</b>										
<b>8. Communications</b>										
Name	Ch	Function	Rx Freq	Rx Tone	Tx Freq	Tx Tone	Notes			
CMD 2	2	COMMAND	171.5375N	107.2	164.8625N	107.2	CMD located On Hayfork Bally			
TAC 8	8	TACTICAL	166.7250N	107.2	166.7250N	107.2				
A/G CMD	12	A/G CMD	171.8625N		171.8625N		Incident A/G Command			
CALCORD	15	MEDICAL	156.0750N	156.7	156.0750N	156.7	(TONE 6)			
GUARD	16	AIRGUARD	168.6250N		168.6250N	110.9	EMERGENCY HAILING OF AIRCRAFT			
<b>9. Prepared by: Name:</b>			Ryan Resnick, Harry Kelmanson, Marisa Williams(T), Kelly Smyth(T) John Hunter (T) RESL				Signature: _____			
<b>ICS 204</b>		Date/Time: 8/31/2021		2200		Personnel Count: 72				

NIMS IAP

CONTROLLED UNCLASSIFIED INFORMATION//BASIC



## ASSIGNMENT LIST (ICS 204 WF)

CONTROLLED UNCLASSIFIED  
INFORMATION/BASIC

<b>1. Incident Name:</b> <b>MONUMENT FIRE</b>	<b>2. Operational Period:</b> Date From: 09/01/21      Date To: 09/02/21 Time From: 0700              Time To: 0700	<b>3. Branch</b> <b>Division</b> <b>40</b> <b>W</b>
--	---	--

<b>4. Operations Personnel:</b>		Page 2 of 2      Whiskey
Operations Section Chief: <b>Don Fregulia</b> Branch Director: <b>Gary Monday</b> Division/Group Supervisor: <b>Tim Ritchey, Logan Ballesteros(T)</b>	Night Ops: <b>Corey Rose, Jesse Knox(T)</b> Branch Safety: Air Attack:	

5. Resources Assigned:		** Resources Below in Bold are 12 Hour **					
Resource Identifier	ALS	LWD	Leader	Personnel	Request #	Hours	Reporting Location
REAF SHAW		9/5	<b>CHRIS SHAW</b>	1	<b>O-704</b>	<b>0700-1900</b>	<b>Weaverville Camp</b>
REAF CHRISTIE		9/7	<b>ANDREW CHRISTIE</b>	1	<b>O-735</b>	<b>0700-1900</b>	<b>Weaverville Camp</b>
REAF MONTAGNE		9/9	<b>BRENNA MONTAGNE</b>	1	<b>O-805</b>	<b>0700-1900</b>	<b>Weaverville Camp</b>
REAF COOTS			<b>FORREST COOTS</b>	1	<b>O-891</b>	<b>0700-1900</b>	<b>Weaverville Camp</b>
ARCH YOUNG		9/3	<b>ALLISON YOUNG</b>	1	<b>O-892</b>	<b>0700-1900</b>	<b>Weaverville Camp</b>

**6. Work Assignments:**

- Monitor fires edge and keep fire north of Hyampom Road.
- Continue to prepare Hyampom Road from Little Creek to Bar 717 to hold fire north of Hyampom Road.
- Identify check lines to be constructed for potential future firing operations along and north of Hyampom Road.

**7. Special Instructions:**

**8. Communications**

Name	Ch	Function	Rx Freq	Rx Tone	Tx Freq	Tx Tone	Notes
CMD 2	2	COMMAND	171.5375N	107.2	164.8625N	107.2	CMD located On Hayfork Bally
TAC 8	8	TACTICAL	166.7250N	107.2	166.7250N	107.2	
A/G CMD	12	A/G CMD	171.8625N		171.8625N		Incident A/G Command
CALCORD	15	MEDICAL	156.0750N	156.7	156.0750N	156.7	(TONE 8)
GUARD	16	AIRGUARD	168.6250N		168.6250N	110.9	EMERGENCY HAILING OF AIRCRAFT

**9. Prepared by: Name:** Ryan Resnick, Harry Kelmanson, Marisa Williams(T), Kelly Smyth(T) John Hunter (T) RESL

Signature: \_\_\_\_\_

ICS 204                                      Date/Time: 8/31/2021                      2200                                      Personnel Count: 5

# ASSIGNMENT LIST (ICS 204 WF)

CONTROLLED UNCLASSIFIED  
INFORMATION//BASIC

<b>1. Incident Name:</b> <p style="text-align: center; font-weight: bold;">MONUMENT FIRE</p>		<b>2. Operational Period:</b> Date From: 09/01/21    Date To: 09/02/21 Time From: 0700    Time To: 0700				<b>3. Branch</b> <b>Division</b> <p style="text-align: center; font-size: 1.2em; font-weight: bold;">40                      Z</p>	
<b>4. Operations Personnel:</b> Operations Section Chief: <b>Don Fregulia</b> Branch Director: <b>Gary Monday</b> Division/Group Supervisor: <b>Dennis Wilson, Danny Kamamakani(T)</b>					Night Ops: <b>Corey Rose, Jesse Knox(T)</b> Branch Safety: Air Attack:		
<b>5. Resources Assigned:</b>		<b>** Resources Below in Bold are 12 Hour **</b>					
Resource Identifier	ALS	LWD	Leader	Personnel	Request #	Hours	Reporting Location
HC1 TRINITY IHC		9/2	<b>TRISTAN DIAS</b>	20	<b>C-113</b>	<b>0700-1900</b>	Weaverville
HC2I BITTERROOT IHC		9/12		21	<b>C-121</b>	<b>0700-1900</b>	Weaverville
HC2I PVT ASI ARDEN SOLUTIONS		9/4	<b>JEFF HARRISON</b>	20	<b>C-96</b>	<b>0700-1900</b>	Weaverville
WFM1 HELLS CANYON		9/4	<b>BRIAN BATES</b>	9	<b>O-894</b>	<b>0700-1900</b>	Weaverville
DOZ2 PVT SPRATT 436		9/2	<b>ERIC SPRATT</b>	2	<b>E-436</b>	<b>0700-1900</b>	Weaverville
DOZ2 PVT RITTBERGER TRUCKING 801		9/13			<b>E-801</b>	<b>0700-1900</b>	Weaverville
DOZ3 PVT GREENWOOD 479		9/9	<b>JAY GREENWOOD</b>	2	<b>E-479</b>	<b>0700-1900</b>	Weaverville
DOZ3 PVT LONESTAR ENTERPRISES 475		9/2	<b>COREY SUPACK</b>	2	<b>E-475</b>	<b>0700-1900</b>	Weaverville
DOZ3 PVT BRAD INGRAM CONST 168		9/12	<b>MIKE UNDERHILL</b>	2	<b>E-168</b>	<b>0700-1900</b>	Weaverville
WTS1 PVT NORTHSTATE 72		9/4	<b>BOB GETZ</b>	1	<b>E-72</b>	<b>0700-1900</b>	Weaverville
WTS2 PVT CATTLE LACK RANCH 21		9/11	<b>JAMES GOLDIE</b>	2	<b>E-21</b>	<b>0700-0700</b>	Weaverville
WTS2 PVT FORTNER EXCAVATION 23		9/11	<b>BOB FORTNER</b>	1	<b>E-23</b>	<b>0700-1900</b>	Weaverville
WTS2 PVT GLENN'S TENS 637		9/11	<b>GLENN LAQUAGLIA</b>	1	<b>E-637</b>	<b>0700-1900</b>	Weaverville
WTS2 PVT JOHN RYAN 640		9/13	<b>BUD MARTIN</b>	1	<b>E-640</b>	<b>0700-1900</b>	Weaverville
SKG1 PVT SOFT TRACK ATTACK 50		9/7	<b>FREDDIE TEDDER</b>	1	<b>E-50</b>	<b>0700-0700</b>	Weaverville
SKG1 PVT SPENCER LOGGING 807		9/6	<b>JAKE SPENCER</b>	2	<b>E-807</b>	<b>0700-1900</b>	Weaverville
SKG2 PVT PITMAN RESOURCES 760		9/11	<b>BLAZE WALTER</b>	2	<b>E-760</b>	<b>0700-1900</b>	Weaverville
SKG2 PVT BULL CREEK FORESTRY 761		9/10	<b>TYLEN DIAL</b>	2	<b>E-761</b>	<b>0700-1900</b>	Weaverville
<b>6. Work Assignments:</b> - Mop-up and secure fires edge on Pattison Ridge. - Grid and patrol for spots on green side of Pattison Ridge. - Monitor fires edge on Pattison Ridge to recommend need for firing operations to maintain pace with main fire east of West Fork and Miners Creek.							
<b>7. Special Instructions:</b>							
<b>8. Communications</b>							
Name	Ch	Function	Rx Freq	Rx Tone	Tx Freq	Tx Tone	Notes
CMD 2	2	COMMAND	171.5375N	107.2	164.8625N	107.2	CMD located On Hayfork Bally
TAC 10	10	TACTICAL	168.2500N	107.2	168.2500N	107.2	NIGHT DIVISION W/Z
A/G CMD	12	A/G CMD	171.8625N		171.8625N		Incident A/G Command
CALCORD	15	MEDICAL	156.0750N	156.7	156.0750N	156.7	(TONE 6)
GUARD	16	AIRGUARD	168.6250N		168.6250N	110.9	EMERGENCY HAILING OF AIRCRAFT
<b>9. Prepared by: Name:</b> Ryan Resnick, Harry Kelmanson, Marisa Williams(T), Kelly Smyth(T), John Hunter (T)      RESL							
						Signature: _____	
ICS 204		Date/Time: 8/31/2021 2200		Personnel Count: 91			

NIMS IAP

CONTROLLED UNCLASSIFIED INFORMATION//BASIC

# ASSIGNMENT LIST (ICS 204 WF)

CONTROLLED UNCLASSIFIED  
INFORMATION/BASIC

<b>1. Incident Name:</b> MONUMENT FIRE		<b>2. Operational Period:</b> Date From: 09/01/21    Date To: 09/02/21 Time From: 0700    Time To: 0700				<b>3. Branch</b> 40		<b>Division</b> Z	
<b>4. Operations Personnel:</b> Operations Section Chief: Don Fregulia Branch Director: Gary Monday Division/Group Supervisor: Dennis Wilson, Danny Kamamakani(T)						Night Ops: Corey Rose, Jesse Knox(T) Branch Safety: Air Attack:			
<b>5. Resources Assigned:</b>		<b>** Resources Below in Bold are 12 Hour **</b>							
Resource Identifier	ALS	LWD	Leader	Personnel	Request #	Hours	Reporting Location		
SKG2 PVT HART VENTURES 771		9/10	DAVE FISH	1	E-771	0700-1900	Weaverville Camp		
HEQB(T) LLOYD			CHRISTOPHER LLOYD	1	O-866	0700-1900	Weaverville Camp		
EMPF MACARTHUR	X	9/6	KANDACE MACARTHUR	1	E-824	0700-1900	Weaverville Camp		
EMTF JOHNSON		9/6	DANIEL JOHNSON	1	O-517	0700-1900	Weaverville Camp		
SOFR KUDO		9/4	KAY KUDO	1	O-729	0700-1900	Weaverville Camp		
<b>6. Work Assignments:</b> - Mop-up and secure fires edge on Pattison Ridge. - Grid and patrol for spots on green side of Pattison Ridge. - Monitor fires edge on Pattison Ridge to recommend need for firing operations to maintain pace with main fire east of West Fork and Miners Creek.									
<b>7. Special Instructions:</b>									
<b>8. Communications</b>									
Name	Ch	Function	Rx Freq	Rx Tone	Tx Freq	Tx Tone	Notes		
CMD 2	2	COMMAND	171.5375N	107.2	164.8625N	107.2	CMD located On Hayfork Bally		
TAC 10	10	TACTICAL	168.2500N	107.2	168.2500N	107.2	NIGHT DIVISION W/Z		
A/G CMD	12	A/G CMD	171.8625N		171.8625N		Incident A/G Command		
CALCORD	15	MEDICAL	156.0750N	156.7	156.0750N	156.7	(TONE 6)		
GUARD	16	AIRGUARD	168.6250N		168.6250N	110.9	EMERGENCY HAILING OF AIRCRAFT		
<b>9. Prepared by: Name:</b>		Ryan Resnick, Harry Kelmanson, Marisa Williams(T), Kelly Smyth(T) John Hunter (T)			RESL	Signature: _____			
ICS 204	Date/Time: 8/31/2021			2200	Personnel Count: 5				

# ASSIGNMENT LIST (ICS 204 WF)

CONTROLLED UNCLASSIFIED  
INFORMATION//BASIC

<b>1. Incident Name:</b> <p style="text-align: center; font-weight: bold;">MONUMENT FIRE</p>	<b>2. Operational Period:</b> Date From: 09/01/21    Date To: 09/02/21 Time From: 0700    Time To: 0700	<b>3. Branch</b> <b>Division</b> <p style="text-align: center; font-weight: bold;">40    NORTH CONTINGENCY</p>
---	---	---

**4. Operations Personnel:** Page 1 of 2

Operations Section Chief: <b>Don Fregulia</b> Branch Director: <b>Gary Monday</b> Division/Group Supervisor:	Night Ops: <b>Corey Rose, Jesse Knox(T)</b> Branch Safety: Air Attack:
--	--

5. Resources Assigned:	** Resources Below in Bold are 12 Hour **						
Resource Identifier	ALS	LWD	Leader	Personnel	Request #	Hours	Reporting Location
HC2 PVT J FRANCO REFORESTATION 105		9/5	<b>ESEQUIAL TAPIA</b>	20	<b>C-105</b>	0700-1900	Bar 717
ENG3 8333		9/6	<b>VICTOR PRECIADO</b>	5	<b>E-618</b>	0700-1900	Bar 717
ENG6 KENTUCKY 555		9/16	<b>TIM COWELL</b>		<b>E-555</b>	0700-1900	Bar 717
ENG6 PVT GCT E5		9/5	<b>JASON CAMPBELL</b>	3	<b>E-648</b>	0700-1900	Bar 717
ENG6 PVT CLEARWATER FIRE 62		9/6	<b>BRIAN TERRY</b>	3	<b>E-661</b>	0700-1900	Weaverville Camp
DOZ1 PVT R. BROWN CONSTRUCTION 170		9/3	<b>GARY HARRIS</b>	2	<b>E-170</b>	0700-1900	Weaverville Camp
DOZ2 PVT BENS TRUCK & EQUIPMENT 13		9/6	<b>BILL SCARBROUGH</b>	2	<b>E-13</b>	0700-1900	Weaverville Camp
DOZ2 PVT NORTHSTATE 14		8/29	<b>WADE FLORY</b>	1	<b>E-14</b>	0700-1900	Weaverville Camp
DOZ2 PVT BUD GARMAN CONSTRUCTION 25		8/31	<b>BEDA GARMAN</b>	2	<b>E-25</b>	0700-1900	Weaverville Camp
DOZ2 PVT R. BROWN CONSTRUCTION 171		9/11	<b>JAROD FULLERTON</b>	2	<b>E-171</b>	0700-1900	Weaverville Camp
DOZ3 PVT BRATCHER SERVICES 482		9/7	<b>RON DARBY</b>	2	<b>E-482</b>	0700-1900	Weaverville Camp
DOZ3 PVT LET-ER-BUCK 477		9/10	<b>DON ANDREWS</b>	2	<b>E-477</b>	0700-1900	Weaverville Camp
WTT2 CA-TNF 31		9/9	<b>DANNY RASMUSSEN</b>	2	<b>E-769</b>	0700-1900	Weaverville Camp
WTS3 PVT PJ&R 641		9/11	<b>PAUL YOKOYAMA</b>	1	<b>E-641</b>	0700-1900	Weaverville Camp
FALM PVT TIMBERWOLF 83		9/4	<b>ROCKY SULLIVAN</b>	1	<b>O-83</b>	0700-1900	Weaverville Camp
MAST PVT KIT CONTRACTING 31		8/31	<b>IKE TOMLINSON</b>	2	<b>E-31</b>	0700-1900	Weaverville Camp
MAST PVT EVANS RIGHT OF 32		9/3	<b>TEO GONZALEZ</b>	1	<b>E-32</b>	0700-1900	Weaverville Camp
MAST PVT EVANS RIGHT OF 33		9/1	<b>ROBERT TAYLOR</b>	1	<b>E-33</b>	0700-1900	Weaverville Camp

**6. Work Assignments:**  
- Continue contingency lines south of Hyampon Road from Creek Road to Bar 717.

**7. Special Instructions:**

**8. Communications**

Name	Ch	Function	Rx Freq	Rx Tone	Tx Freq	Tx Tone	Notes
CMD 1	1	COMMAND	173.8125N	107.2	168.4750N	107.2	CMD Located on Weaver Bally
CMD 5	5	COMMAND	173.6500N	107.2	164.8125N	107.2	CMD Located on Ironside Lookout
TAC 11	11	TACTICAL	168.2375N	107.2	168.2375N	107.2	
A/G CMD	12	A/G CMD	171.8625N		171.8625N		Incident A/G Command
CALCORD	15	MEDICAL	156.0750N	156.7	156.0750N	156.7	(TONE 6)
GUARD	16	AIRGUARD	168.6250N		168.6250N	110.9	EMERGENCY HAILING OF AIRCRAFT

**9. Prepared by: Name:** Ryan Resnick, Harry Kelmanson, Marisa Williams(T), Kelly Smyth(T), John Hunter (T)    RESL

Signature: \_\_\_\_\_

ICS 204    Date/Time: 8/31/2021 2200    Personnel Count: 52

# ASSIGNMENT LIST (ICS 204 WF)

CONTROLLED UNCLASSIFIED  
INFORMATION/BASIC

<b>1. Incident Name:</b> <p style="text-align: center;"><b>MONUMENT FIRE</b></p>	<b>2. Operational Period:</b> Date From: 09/01/21    Date To: 09/02/21 Time From: 0700    Time To: 0700	<b>3. Branch</b> <b>Division</b> <p style="text-align: center;"><b>40</b>    <b>NORTH CONTINGENCY</b></p>
---	---	--

<b>4. Operations Personnel:</b> Operations Section Chief: <b>Don Fregulia</b> Branch Director: <b>Gary Monday</b> Division/Group Supervisor:		Night Ops: <b>Corey Rose, Jesse Knox(T)</b> Branch Safety: Air Attack:
---	--	--

5. Resources Assigned:		** Resources Below in Bold are 12 Hour **					
Resource Identifier	ALS	LWD	Leader	Personnel	Request #	Hours	Reporting Location
MAST PVT EVANS RIGHT OF 34		9/13	<b>MIKE EVANS</b>	2	<b>E-34</b>	0700-1900	Weaverville Camp
MAST PVT CUTTING EDGE 428		9/4	<b>SERGIO RENTERIA</b>	2	<b>E-428</b>	0700-1900	Weaverville Camp
MAST PVT HACKERS MACHINES 429		9/4	<b>CHAD METE</b>	2	<b>E-429</b>	0700-1900	Weaverville Camp
MAST PVT NORTHSTATE 463		9/12	<b>KAYLEE WHEELER</b>	2	<b>E-463</b>	0700-1900	Weaverville Camp
GRDR PVT LET-ER-BUCK 217		9/5	<b>DON ANDREWS</b>	2	<b>E-217</b>	0700-1900	Weaverville Camp
LDFR SHF 7045		9/5	<b>DAVE BROWN</b>	2	<b>E-684</b>	0700-1900	Weaverville Camp
TFLD ZAVALLA		9/7	<b>ANTHONY ZAVALLA</b>	1	<b>O-782</b>	0700-1900	Weaverville Camp
TFLD ROHRS		9/6	<b>KEITH ROHRS</b>	1	<b>O-783</b>	0700-1900	Weaverville Camp
HEQB DOMINI		9/6	<b>HAN DOMINI</b>	1	<b>O-744</b>	0700-1900	Weaverville Camp

**6. Work Assignments:**  
- Continue contingency lines south of Hyampon Road from Creek Road to Bar 717.

**7. Special Instructions:**

8. Communications							
Name	Ch	Function	Rx Freq	Rx Tone	Tx Freq	Tx Tone	Notes
CMD 1	1	COMMAND	173.8125N	107.2	168.4750N	107.2	CMD Located on Weaver Bally
CMD 5	5	COMMAND	173.6500N	107.2	164.8125N	107.2	CMD Located on Ironside Lookout
TAC 11	11	TACTICAL	168.2375N	107.2	168.2375N	107.2	
A/G CMD	12	A/G CMD	171.8625N		171.8625N		Incident A/G Command
CALCORD	15	MEDICAL	156.0750N	156.7	156.0750N	156.7	(TONE 6)
GUARD	16	AIRGUARD	168.6250N		168.6250N	110.9	EMERGENCY HAILING OF AIRCRAFT

**9. Prepared by: Name:** Ryan Resnick, Harry Kelmanson, Marisa Williams(T), Kelly Smyth(T), John Hunter (T)    RESL    Signature: \_\_\_\_\_

# ASSIGNMENT LIST (ICS 204 WF)

CONTROLLED UNCLASSIFIED  
INFORMATION//BASIC

<b>1. Incident Name:</b> <b>MONUMENT FIRE</b>		<b>2. Operational Period:</b> Date From: 09/01/21    Date To: 09/02/21 Time From: 0700    Time To: 0700			<b>3. Branch</b> <b>Division</b> <b>NIGHT</b> <b>WIZ</b> (Monument) Page 1 of 2    Whiskey/Zulu		
<b>4. Operations Personnel:</b> Operations Section Chief: <b>Don Fregulia</b> Branch Director: Division/Group Supervisor: <b>Cheveyo Munk, Julie Podony(T)</b>				Night Ops: <b>Corey Rose, Jesse Knox(T)</b> Branch Safety: <b>Tom Nash</b> Air Attack:			
<b>5. Resources Assigned:</b>		<b>** Resources Below in Bold are 12 Hour **</b>					
Resource Identifier	ALS	LWD	Leader	Personnel	Request #	Hours	Reporting Location
HC1 LOLO IHC		9/9	<b>SHAWN FAELLA</b>	22	<b>C-108</b>	1900-0700	Weaverville Camp
HC2 PVT TRI-CITIES FORESTRY		9/11	<b>JOSE SILVA</b>	20	<b>C-125</b>	1900-0700	Weaverville Camp
ENG3 SACRAMENTO DISTRICT		9/3	<b>HUGO ERHEWAYN</b>	5	<b>E-673</b>	1900-0700	Weaverville Camp
ENG3 PVT GREY WOLF		9/11	<b>JEFF CAMPBELL</b>	4	<b>E-505</b>	1900-0700	Weaverville Camp
ENG3 AZ 303		9/2	<b>JIMMY NIESEN</b>	4	<b>E-789</b>	1900-0700	Weaverville Camp
ENG4 BOISE E413		9/11	<b>JONATHAN BLODGETT</b>	6	<b>E-10611</b>	1900-0700	Weaverville Camp
ENG6 E607		9/11	<b>DOUG LESH</b>	6	<b>E-793</b>	1900-0700	Weaverville Camp
ENG6 STONEWALL FPD E610		9/11	<b>KEVIN YEATTS</b>	3	<b>E-795</b>	1900-0700	Weaverville Camp
ENG6 BITTERROOT E641		9/12	<b>RUSSELL BUZZELL</b>	6	<b>E-10537</b>	1900-0700	Weaverville Camp
ENG6 PVT WOODPECKER		9/11	<b>ED FAULKNER</b>	3	<b>E-787</b>	1900-0700	Weaverville Camp
DOZ2 PVT BROWN		9/7	<b>BARR BROWN</b>	2	<b>E-484</b>	1900-0700	Weaverville Camp
DOZ2 PVT ROWBERRY		9/6	<b>JIM VARWIG</b>	2	<b>E-629</b>	1900-0700	Weaverville Camp
WTT1 ROCK CREEK		9/2	<b>TIM DANIEL</b>	2	<b>E-80</b>	0700-0700	Weaverville Camp
WTS2 PVT CATTLE LACK RANCH 21		9/11	<b>JAMES GOLDIE</b>	2	<b>E-21</b>	0700-0700	Weaverville Camp
WTS2 PVT CATTLE LACK RANCH 22		9/8	<b>CLANCY ENLOW</b>	1	<b>E-22</b>	1900-0700	Weaverville Camp
SKG1 PVT SOFT TRACK ATTACK 50		9/7	<b>FREDDIE TEDDER</b>	1	<b>E-50</b>	0700-0700	Weaverville Camp
SKG2 RIM ROCK EQUIP.		9/8	<b>ROBERT TOBIASON</b>	2	<b>E-770</b>	1900-0700	Weaverville Camp
PVT PUMPZILLA 2 TRINITY		9/8	<b>JOHN VELEZ</b>	2	<b>S-21</b>	0700-0700	Weaverville Camp
<b>6. Work Assignments:</b> - Mop up to the extent necessary to maintain containment. - Provide structure defense and point protection as needed.							
<b>7. Special Instructions:</b>							
<b>8. Communications</b>							
Name	Ch	Function	Rx Freq	Rx Tone	Tx Freq	Tx Tone	Notes
CMD 1	1	COMMAND	173.8125N	107.2	168.4750N	107.2	CMD Located on Weaver Bally
TAC 10	10	TACTICAL	168.2500N	107.2	168.2500N	107.2	NIGHT DIVISION WIZ
A/G CMD	12	A/G CMD	171.8625N		171.8625N		Incident A/G Command
CALCORD	15	MEDICAL	156.0750N	156.7	156.0750N	156.7	(TONE 6)
GUARD	16	AIRGUARD	168.6250N		168.6250N	110.9	EMERGENCY HAILING OF AIRCRAFT
<b>9. Prepared by: Name:</b> Ryan Resnick, Harry Kelmanson, Marisa Williams(T), Kelly Smyth(T) John Hunter (T)			RESL		Signature: _____		
ICS 204		Date/Time: 8/31/2021		2200		Personnel Count: 93	

# ASSIGNMENT LIST (ICS 204 WF)

CONTROLLED UNCLASSIFIED  
INFORMATION//BASIC

<b>1. Incident Name:</b> <p style="text-align: center;"><b>MONUMENT FIRE</b></p>	<b>2. Operational Period:</b> Date From: 09/01/21      Date To: 09/02/21 Time From: 0700              Time To: 0700	<b>3. Branch</b> <b>Division</b> <p style="text-align: center;"><b>NIGHT</b> <b>(Monument)</b></p> <p style="text-align: center;"><b>WIZ</b></p>
---	---	---

<b>4. Operations Personnel:</b> Operations Section Chief: <b>Don Fregulia</b> Branch Director: Division/Group Supervisor: <b>Cheveyo Munk, Julie Podony(T)</b>	Night Ops: <b>Corey Rose, Jesse Knox(T)</b> Branch Safety: <b>Tom Nash</b> Air Attack:
---	--

<b>5. Resources Assigned:</b>		<b>** Resources Below in Bold are 12 Hour **</b>					
Resource Identifier	ALS	LWD	Leader	Personnel	Request #	Hours	Reporting Location
TFLD JACKSON		9/3	<b>ERIC JACKSON</b>	1	<b>E-673.1</b>	1900-0700	Weaverville Camp
TFLD(T) BALE-RUDNITSKI		9/9	<b>WAYNE BALE-RUDNITSKI</b>	1	<b>C-108.6</b>	1900-0700	Weaverville Camp
EMPF CLARK		9/8	<b>SHAWN CLARK</b>	1	<b>O-768</b>	1900-0700	Weaverville Camp
EMTF WARFORD		9/12	<b>WEDGE WARFORD</b>	1	<b>O-677</b>	1900-0700	Weaverville Camp
SOF2 NASH		9/6	<b>TOM NASH</b>	1	<b>O-418.111</b>	1900-0700	Weaverville Camp

<b>6. Work Assignments:</b>
- Mop up to the extent necessary to maintain containment.
- Provide structure defense and point protection as needed.

<b>7. Special Instructions:</b>
---------------------------------

<b>8. Communications</b>							
Name	Ch	Function	Rx Freq	Rx Tone	Tx Freq	Tx Tone	Notes
CMD 1	1	COMMAND	173.8125N	107.2	168.4750N	107.2	CMD Located on Weaver Bally
TAC 10	10	TACTICAL	168.2500N	107.2	168.2500N	107.2	NIGHT DIVISION WIZ
A/G CMD	12	A/G CMD	171.8625N		171.8625N		Incident A/G Command
CALCORD	15	MEDICAL	156.0750N	156.7	156.0750N	156.7	(TONE 6)
GUARD	16	AIRGUARD	168.6250N		168.6250N	110.9	EMERGENCY HAILING OF AIRCRAFT

<b>9. Prepared by: Name:</b>	Ryan Resnick, Harry Kelmanson, Marisa Williams(T), Kelly Smyth(T) John Hunter (T)	RESL	Signature: _____
------------------------------	---	------	------------------

ICS 204	Date/Time: 8/31/2021	2200	Personnel Count: 5
---------	----------------------	------	--------------------

# AIR OPERATIONS SUMMARY ICS-220

**Incident Name and Incident Number**  
 NORTH AND SOUTH ZONES/ Monument SHF 001187  
**Sunrise** 639 **Startup** 709 **Cutoff** 1907 **Sunset** 1937

**General Remarks, Safety Notes, Hazards, Air Operations Special Equipment, etc.**  
 TRACK ALL DIPSITE LOCATIONS / NUMBER OF DIPS / GALLONS TAKEN.  
 TRACK ALL DROP LOCATIONS / NUMBER OF DROPS / GALLONS DROPPED  
 ALL GPS DATA TO BE COLLECTED IN DEGREES, MINUTES, DECIMAL MINUTES FORMAT.  
 AVOID Aerial Application of Retardant / Foam / Agent within 300' of Waterways, Bodies of Water, etc.  
 If Retardant / Foam / Agent is Dropped Within These Areas Immediately Notify the AOB and Provide the Following Information:  
 Lat / Long, Estimated Number of Gallons and a Map Detailing The Area.

Address to MRB is- 1 Wizard way Hayfork CA 96041

**Time Prepared**  
 1800  
**Shutdown**  
 2007  
 Willow Creek  
 40 56.570 123 38.055  
 Sky Ranch  
 40 30.077 122 22.655  
 Hayfork MRB  
 40 32.787 123 12.075

**Date Prepared**  
 Tuesday, August 31, 2021  
**Operational Period - Date**  
 Wednesday, September 1, 2021  
**Request #** A-205  
**Radius:** Polygon NM  
**Altitude:** 11500' MSL  
**Centerpoint:** Lat Long  
 NOTAMS: 1/0550  
 Frequency 126.2750  
<http://tfr.faa.gov/tfr-2/list.html>

**Prepared By**  
 Niko Matteoli  
**Operational Period - Time**  
 0700-0700  
**Rescue Ship Information**  
 Name \_\_\_\_\_  
 Phone \_\_\_\_\_  
 Make/Model \_\_\_\_\_  
 Location \_\_\_\_\_  
 Request Procedure For These Aircraft:  
 Through Incident Communications  
 See Medical Plan For Additional Info

## SOUTH-(SOUTH COMMUNICATIONS)

Frequencies	RX	Tone	TX	Tone	AM / FM
AIR TACTICS	169.4875		169.4875		FM
AIR / AIR TFR	126.2750		126.2750		AM
SOUTH COMMAND CDF C2	151.2650	103.5 (8)	159.3300	151.4 (14)	FM
SOUTH CMD CDF C11 DIV RR	151.1675	103.5 (8)	159.3975	151.4 (14)	FM
SOUTH ROTOR VICTOR	128.7750		128.7750		AM
SOUTH ROTOR BRIEFING	134.1750		134.1750		AM
South A/G - Command CDF T13	151.3775	192.8 (16)	151.3775	192.8 (16)	FM
South A/G - Tactical CDF T25	159.2775	192.8 (16)	159.2775	192.8 (16)	FM
TOLC (Sky Ranch)	170.7625	151.4 (14)	170.7625	151.4 (14)	FM
DECK (Sky Ranch)	163.1000		163.1000		FM
CALCORD - MEDICAL	156.0750	156.7 (6)	156.0750	156.7 (6)	FM
WARD - Emergency Only	168.6250		168.6250		FM

## South Zone Helibase

FAA #	Type	Make/Model	Helibase	Avail	Start	Remarks
1CK	I	BV 107 II	Sky Ranch	800	830	A-10015
5CK	I	UH-60	Sky Ranch	800	830	A-10016
4CK	I	UH-60	Sky Ranch	800	830	A-10000
7FH	I	UH-60	Sky Ranch	800	830	A-10001
3TW	I	UH-60	Sky Ranch	800	830	A-10002
9CH	I	BV 107 II	Sky Ranch	800	830	A-10003
0FG	II	UH-1H	Sky Ranch	800	830	A-10017
68U	II	S58T	Sky Ranch	800	830	A-10009
3CS	II	UH-1H	Sky Ranch	800	830	A-10008
6LH	II	B-212	Sky Ranch	800	830	A-10010
7TK	III	B-407	Sky Ranch	800	830	A-10035
2BH	III	BH206L+	Sky Ranch	800	830	A-10029
9TA	III	AS350B3	Sky Ranch	800	830	A-10014

## South Zone

Position	Name	Phone	Trainee	Phone
AOBD	Niko Matteoli	(704) 488-2460		
AOBD (D)	Tim Shiffer	(530) 448-2418		
ASGS	Josh Faulkner	(530) 356-1351		
HEBM	Kody Hill	(530) 917-1438	Gary Engen	(707) 299-7699
HLCO	Rudy Ynigues	(530) 515-4440		
HLCO	Tim Shiffer	(530) 448-2418		

## North Zone


Position	Name	Phone	Trainee	Phone
AOBD	John Keesee	(805) 551-6422		
ASGS	Greg Scully	(907) 240-4660		
HEBM	Seth Ross	(907) 419-4627		
ATGS	Gordon Annudson	(907) 712-4789		
ATGS	Jay Waller	(263) 696-8530		
HLCO	Casey Jones	(559) 696-3878		

*Niko Matteoli*



# ICS 205 - INCIDENT RADIO COMMUNICATIONS PLAN

CONTROLLED UNCLASSIFIED  
INFORMATION/BASIC

<b>1. Incident Name:</b> Monument Fire South Zone Incident Channels		<b>2. Date/Time Prepared</b> Date: 08/31/2021 Time: 1930		<b>3. Operational Period:</b> Date From: 09/01/21 Time From: 0700		Date To: 09/02/21 Time To: 0700		
<b>4. Communications</b>								
Ch#	Function	Name	Assigned To	Rx Freq	Rx Tone	Tx Freq	Tx Tone	Notes
1	COMMAND	CDF C2	ALL DIVS	151.2650	103.5 (T8)	159.3300	151.4 (T14)	
2	COMMAND	CDF C11 (T14)	BRANCH 30	151.1675	103.5 (T8)	159.3975	151.4 (T14)	TO BE USED IN BRANCH 30 ONLY
3	COMMAND	CDF C11 (T11)	DIV RR	151.1675	103.5 (T8)	159.3975	114.8 (T11)	FOR RR ONLY
4	TACTICAL	VFIRE 23	DIV DD / HH	154.2950N	156.7 (T6)	154.2950N	156.7 (T6)	
5	TACTICAL	VFIRE 24	DIV NN	154.2725N	156.7 (T6)	154.2725N	156.7 (T6)	
6	TACTICAL	CDF T26	DIV RR	159.2925N	192.8 (T16)	159.2925N	192.8 (T16)	
7	TACTICAL	CDF T27	SOUTH CONT 1	159.3075N	192.8 (T16)	159.3075N	192.8 (T16)	
8	TACTICAL	CDF T28	SOUTH CONT 2	151.1825	192.8 (T16)	151.1825	192.8 (T16)	
9	TACTICAL	CDF T15	DIV FSR	159.2700	192.8 (T16)	159.2700	192.8 (T16)	
10	TACTICAL	CDF T23	MONUMENT FUELS	159.4500	192.8 (T16)	159.4500	192.8 (T16)	TRAVEL NET FOR MONUMENT FUELS
11								
12								
13	TACTICAL	CDF T13	ALL DIVS	151.3775	192.8 (T16)	151.3775	192.8 (T16)	A/G COMMAND
14	AIR TO GROUND	CDF T25	ALL DIVS	159.2775	192.8 (T16)	159.2775	192.8 (T16)	A/G TACTICAL
15	MEDICAL	CALCORD	ALL DIVS	156.0750N	156.7 (T6)	156.0750N	156.7 (T6)	MEDICAL COORDINATION
16	AIRGUARD	GUARD 31	ALL DIVS	168.6250N		168.6250N	110.9 (T1)	EMERGENCY USE ONLY
17								
18								
19								
20	AIRGUARD	GUARD 31	ALL DIVS	168.6250N		168.6250N	110.9 (T1)	EMERGENCY USE ONLY
<b>5. Special Instructions</b>								
TO CONFIRM YOU HAVE THE MOST CURRENT CLONE, ENSURE YOUR DISPLAY OF CHANNEL 16 OR 20 MATCHES CHANNEL 16 OR 20 OF THE 205 - HEIGHT AND POWER ARE KEY WHEN USING RADIOS; BE AT A HIGH POINT, USE A MOBILE IF POSSIBLE, AND USE RADIO RELAYS WHEN NEEDED								
<b>6. Prepared by (Communications Unit Leader):</b> Name: Chris Johns				Signature: 				
ICS 205 - CONTROLLED UNCLASSIFIED INFORMATION/BASIC				Date/Time: 08/31/21 1930				

# INCIDENT RADIO COMMUNICATIONS PLAN ICS 205

<b>Incident Name</b> <b>Monument North Fire</b>	<b>Date/Time Prepared</b> 8/31/21 @ 1830	<b>Operational Period Date/Time</b> Day-Night 9/1/21 0700 - 9/2/21 0700
--	---	--

## 4. BASIC RADIO CHANNEL UTILIZATION

Ch #	Channel Name	Assignment	RX Frequency Narrowband (N) Wideband (W)	RX Tone/NAC	TX Frequency Narrowband (N) Wideband (W)	TX Tone/NAC	Mode Digital (D) Analog (A) Mixed (M)	Remarks
1	CMD 1	ALL DIVISIONS	173.8125	107.2	168.4750	107.2	A	CMD Located on Weaver Bally
2	CMD 2	ALL DIVISIONS	171.5375	107.2	164.8625	107.2	A	CMD located On Hayfork Bally
3	CMD 3	ALL DIVISIONS	171.0875	107.2	164.6000	107.2	A	CMD Located on Bully Choop
4	CMD 4	ALL DIVISIONS	173.5000	107.2	165.8125	107.2	A	CMD Located on Brush Mt.
5	CMD 5	ALL DIVISIONS	173.6500	107.2	164.8125	107.2	A	CMD Located on Ironside Lookout
6	TAC 6	DIV A, DIV U	168.0500	107.2	168.0500	107.2	A	NIGHT DIVISION A
7	TAC 7	DIV E,	168.6000	107.2	168.6000	107.2	A	
8	TAC 8	DIV J, DIV W	166.7250	107.2	166.7250	107.2	A	
9	TAC 9	DIV K, DIV L	166.7750	107.2	166.7750	107.2	A	NIGHT DIVISION K
10	TAC 10	DIV M, DIV Z	168.2500	107.2	168.2500	107.2	A	NIGHT DIVISION WIZ
11	TAC 11	NORTH CONTINGENCY	168.2375	107.2	168.2375	107.2	A	
12	A/G CMD	A/G CMD	171.8625		171.8625		A	Incident Air to Ground Command
13	A/G TAC	ALL DIVISIONS	171.0375		171.0375		A	Incident Air to Ground Tactical
14	IA-CMD	IA-CMD	171.5750		165.0125	136.5	A	Shasta Forest Repeater
15	CALCORD	MEDICAL COORDINATION	156.0750	156.7	156.0750	156.7	A	(TONE 6)
16	GUARD	GUARD	168.6250		168.6250	110.9	A	EMERGENCY HAILING OF AIRCRAFT

I-205 Prepared By **Kevin Throop - COML**

**USE HUMAN REPEATERS WHEN NEEDED.**

**INCIDENT RADIO COMMUNICATIONS PLAN  
ICS 205**

Incident Name  
**Monument North IA**

Date/Time Prepared  
8/31/21 @ 1830

Operational Period Date/Time  
Day-Night 9/1/21 0700 - 9/2/21 0700

**4. BASIC RADIO CHANNEL UTILIZATION**

Ch #	Channel Name	Assignment	RX Frequency Narrowband (N) Wideband (W)	RX Tone/NAC	TX Frequency Narrowband (N) Wideband (W)	TX Tone/NAC	Mode Digital (D) Analog (A) Mixed (M)	Remarks
1	COMMAND	SHF-R	171.5750 N		165.0125 N	OST	A	Shasta Forest Repeater (Tone 4,5,6,9)
2	COMMAND	SERV-R	171.5000 N		164.8250 N	OST	A	Shasta Service Net (Tone 4,6)
3	COMMAND	SHU-L	151.1600 N		159.2700 N	OST	A	CALFIRE Shasta Command (Tone 3,7)
4	COMMAND	SRF-R	172.3750 N		164.1750 N	OST	A	Six Rivers Forest Repeater (Tone 5,6)
5	TACTICAL	NIFC T2	168.2000 N		168.2000 N		A	I/A Tactical
6	TACTICAL	RS TAC 4	166.5500 N		166.5500 N		A	I/A Tactical
7	TACTICAL	RS TAC 5	167.1125 N		167.1125 N		A	I/A Tactical
8	TACTICAL	CDF T11	151.4450 N	192.8	151.4450 N	192.8	A	I/A Tactical (Tone 16)
9	LOCAL GOV RPT.	XTR-R	154.7850 N		158.7600 N		A	Trinity County Command (Tone 10,13)
10	MONUMENT CMD	MON CM2	171.5375 N	107.2	164.8626 N	107.2	A	Monument Command Hayfork Bally (Tone 10)
11	MONUMENT CMD	MON CM4	173.5000 N	107.2	165.8125 N	107.2	A	Monument North Command Brush Mountain (Tone 10)
12	MONUMENT AIR TO GROUND	AG TAC	171.0375 N		171.0375 N		A	Monument North A/G Brush Mountain
13	AIR TO GROUND SECONDARY	AG08 SEC	166.8750 N		166.8750 N		A	IA A/G Secondary
14	AIR TO GROUND PRIMARY	AG43 PRI	167.6000 N		167.6000 N		A	IA A/G Primary
15	CALCORD	CALCORD	156.0750 N	156.7	156.0750 N	156.7	A	MEDEVAC Coordination (Tone 6)
16	GUARD	GUARD	168.6250 N		168.6250 N	110.9	A	Emergency (Tone 1)

Prepared By  
**Kevin Throop COM1**

**USE HUMAN REPEATERS WHEN NEEDED.**

<b>MEDICAL PLAN ICS 206</b>	1. INCIDENT NAME <b>MONUMENT</b>	2. DATE PREPARED <b>08/31/2021</b>	3. TIME PREPARED <b>1800</b>	4. OPERATIONAL PERIOD <b>09/01-09/02, 0700-0700</b>									
<b>5. INCIDENT MEDICAL AID STATIONS</b>													
MEDICAL SUPPLY STATIONS	LOCATION			PARAMEDICS									
				YES NO									
<b>CAL MAT</b>	<b>ANDERSON BASE CAMP</b>			<b>MD</b>									
<b>MERT</b>	<b>TRINITY RIVER CAMP</b>			<b>PA</b>									
<b>6. TRANSPORTATION</b>													
<b>A. AMBULANCE SERVICES</b>													
NAME	LOCATION	PHONE	PARAMEDICS										
			YES	NO									
<b>AMBULANCE 104</b>	<b>BRANCH 30</b>	<b>CMD CHANNEL</b>	<b>X</b>										
<b>REMS 5 (UTV)</b>	<b>BRANCH 30 DIV RR</b>	<b>CMD CHANNEL</b>	<b>X</b>										
<b>B. AIR AMBULANCES</b>													
NAME	LOCATION			PARAMEDICS									
				YES NO									
<b>CALIFORNIA GUARD 822 (24 HOUR HOIST)</b>	<b>Redding Airport --Contact CMD--</b>			<b>X</b>									
<b>7. HOSPITALS</b>													
NAME	ADDRESS	TRAVEL TIME	PHONE	CNG 822	HELIPAD	BURN CENTER							
		AIR GRD	Frequency		YES NO	YES	NO						
<b>SHASTA REG MED CTR TRAUMA LVL 3</b>	1100 BUTTE ST, REDDING 40' 35.10'N, -122' 23.28'W	15 Min	60 Min	(530) 244-5353 468.025 Tx, 468.025 Rx	<b>X</b>		<b>X</b>						
<b>MERCY MED CTR TRAUMA LVL 2</b>	2175 ROSALINE AVE, REDDING 40' 34.332'N, -122' 23.796'W	15 Min	60 Min	(530) 225-7201 468.075 Tx, 463.000 Rx	<b>X</b>	<b>X</b>	<b>X</b>						
<b>UC DAVIS TRAUMA LVL 1</b>	2315 STOCKTON BLVD, SACRAMENTO 38' 33.360'N, -121' 27.330'W	1.25 Hour	4 Hour	(916) 734-2011 446.525 Tx, 203.5 Rx	<b>X</b>	<b>X</b>	<b>X</b>						
<b>TRINITY HOSPITAL WEAVERVILLE</b>	60 EASTER AVENUE, WEAVERVILLE 40' 44.275'N, -122'56.359'W	10 Min	30 Min	(530) 623-5541 x1	<b>X</b>		<b>X</b>						
<b>8. MEDICAL EMERGENCY PROCEDURES</b>													
<p style="text-align:center;"><b><u>EMERGENCY FREQUENCY:</u></b> <b><u>"LINE EMERGENCY"</u></b></p> <p>The Crew Supervisor will contact the Division Supervisor with patient complaint/condition, location and resource needs.</p> <ul style="list-style-type: none"> <li>• Division/Group Supervisor contacts: <ol style="list-style-type: none"> <li>1. Closest EMS resource</li> <li>2. Communications Unit</li> </ol> </li> <li>• Communications Unit contacts: <ol style="list-style-type: none"> <li>1. Ground or Air ambulance as requested</li> <li>2. Operations</li> <li>3. Safety</li> <li>4. Medical Unit</li> </ol> </li> <li>• Division Supervisor or designee will serve as point of contact and run medical emergencies on the assigned channel. <ol style="list-style-type: none"> <li>1. A pre-assigned <b>COMMAND</b> frequency and <b>CALCORD</b> should be used for IWI and only for duration of need.</li> </ol> </li> <li>• Communications Unit will clear the command channel for emergency traffic as needed and only for the duration of need.</li> </ul> <p style="text-align:center;"><b><u>CAMP EMERGENCY:</u></b></p> <p>Contact the Medical Unit with a patient complaint/condition and location. Medical Staff will respond to stabilize incident:</p> <ul style="list-style-type: none"> <li>• Medical Unit contacts: <table style="width:100%; border:none;"> <tr> <td style="width:50%;">1. Communications</td> <td style="width:50%;">4. Operations</td> </tr> <tr> <td>2. Safety</td> <td>5. Crew Supervisor</td> </tr> <tr> <td>3. Logistics</td> <td>6. Comps/Claims</td> </tr> </table> </li> </ul>				1. Communications	4. Operations	2. Safety	5. Crew Supervisor	3. Logistics	6. Comps/Claims	<p style="text-align:center;"><b><u>INJURY REPORTING PROCEDURES</u></b></p> <p>CHIEF COMPLAINT _____  LOCATION OF PATIENT _____  POINT OF CONTACT _____  TRANSPORTATION REQUESTED BY: AIR ___ GROUND ___  POINT OF PICKUP _____  LAT _____ LONG _____  PATIENT UNIT ID _____  IS AN EMT/P WITH PATIENT: YES ___ NO ___  AGE _____  SEX: MALE ___ FEMALE ___</p> <p style="text-align:center;"><b>ALL EMERGENCIES---Secure the area and identify witnesses for later investigation. Keep an accurate log of events.</b></p> <p style="text-align:center;"><b>EMERGENCY # 916-883-0934</b></p>			
1. Communications	4. Operations												
2. Safety	5. Crew Supervisor												
3. Logistics	6. Comps/Claims												
<b>ICS 206</b>	9. PREPARED BY: (Medical Unit Leader) <b>JOSH STALEY-(MEDL)</b>	10. REVIEWED BY: (Safety Officer) <b>TIM IRWIN-(SOBK)</b>											

# \$ FINANCE MESSAGE \$

*\*Please No Off Site Feeding Unless Approved by the Finance Section Chief.\**

## CAL FIRE PERSONNEL

Make sure to create a paper FC-33 so we can update.  
If anyone has any CalCard travel receipts and meal/lodging sign in sheets, please get a copy to Finance.

## LOCAL GOVERNMENT RESOURCES

Make sure you check in with TIME Unit for ABH or F-42 Paperwork.

## ALL HIRED EQUIPMENT

Make sure you get your shift ticket filled out by your Division Group Supervisor or Supervisor.

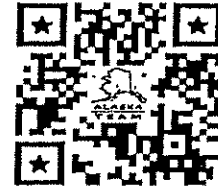
## ALL SUPERVISORS OF HIRED EQUIPMENT

Shift Tickets for hired equipment need to be signed and turned in to TIME daily. Ensure the shift ticket is filled out completely (including evaluation), accurately and legibly. **Example included in IAP.**

## PROPERTY DAMAGE or INJURIES

Please report any property damage caused by suppression activities and/or injuries to the Comp/Claims Unit.

**MONUMENT NORTH FIRE**  
**Finance Process**  
**CA-SHF-001187**



For resources hired out of state and have VIPR agreement scan QR code

**IMPORTANT INFORMATION:** If you are a Monument North Resource, i.e., you have a RO # four digits or less (E-489), and you are 'loaned' to the South Zone, please note **SOUTH ZONE** or **Monument South Zone** on your **Shift Ticket / CTR**.

Please send all documents to [2021.monument.finance@firenet.gov](mailto:2021.monument.finance@firenet.gov) for all resources.

Email Subject Line: TIME/Resource Order No./ Resource Name/Position Code – Put TIME, CTR, SHIFT TICKET in the subject line with your information

(Example: TIME/O-200/SBear/Safety)

Email all documents that pertain to your assignment:

Agency Overhead	Agency ADs / EFFs	VIPR Resources	Contract / Agency Crews	Cooperators
Resource Order Shift Tickets	Resource Order Casual Hire Form Shift Tickets	Resource Order VIPR Agreement Schedule of Items Inspections Shift Tickets	Resource Order Manifest Agreement / Contract Schedule of Items Inspections Crew Time Reports	Resource Order Agreement Shift Tickets / CTRs

Submit Equipment Shift Tickets or Crew Time Reports (CTRs) daily to [2021.monument.finance@firenet.gov](mailto:2021.monument.finance@firenet.gov)

Please include your email address and phone number in the body of the email when sending your documents.

Any questions, please call: FINANCE – (213) 431-4035 – Weaverville  
 (425) 500-9464 – Weaverville  
 (425) 500-9475 – Willow Creek  
 (360) 624-2315 – Luann Grover

**COMP / CLAIMS**

Weaverville

Barb Haxby  
[barbara\\_haxby@firenet.gov](mailto:barbara_haxby@firenet.gov)  
 (360) 601-8820

Willow Creek

Susan Haggerty  
[susan\\_haggerty@firenet.gov](mailto:susan_haggerty@firenet.gov)  
 (586) 943-3016

# 24 Hour Shift to 12 Hour Shift

EMERGENCY SHIFT TICKET and EVALUATION FORM						Contractor Name	
The responsible Government Officer will complete this form each shift						Fireline Builders	
Incident or Project Name		Incident Number		Request Number		Operator #1	Operator #2
August Complex West Zone		CAMEU010843		E-99		Jim Smith	John Jones
Agreement Number						Operator Furnished By:	
LNU01234567						<input checked="" type="checkbox"/> Contractor	<input type="checkbox"/> Government
Equipment Make		Equipment Model / Type				Operating Supplies Furnished By:	
CAT		Dozer D6H				<input checked="" type="checkbox"/> Contractor	<input type="checkbox"/> Government
Serial Number		Licence Number				Equipment Status	
6LN3344						<input checked="" type="checkbox"/> Inspected	<input checked="" type="checkbox"/> Under Agreement
Equipment Use						Released by Government	
(Circle) <u>hours</u> / Days / Miles						Withdrawn by Contractor	
Date	Start	Stop	Work	Assignment			
Mo / Day							
8/2	0001	700	7	Division J			
8/2	0700	2300	16	Division J			
8/2	2300	2400	1	OFF SHIFT			
Vendor Rating						Govt. Rep. Name and Position - PRINT	
		Poor*	Avg.	Good	Exc.	N/A	Mike Brown, Div J
Met Performance Expectations						Govt. Rep. Signature	
Equipment in Safe Working Condition						Mike Brown	
Operator Skill Level						Contractor Signature	
Operates Safely						Jim Smith	
Operator's Cooperation Level						Date	Time
Overall Performance						08/02/20	0700
* NOTE: Any rating of POOR requires an explanation in Comment Section.						CALFIRE 297	
**Final evaluation or for more documentation, use an ICS Form 230 or equivalent.						(Rev 3-2011)	

Pink - Finance

Blue - Home Unit HE Coordinator

Yellow - Vendor

White - Govt Representative

# 12 Hour Shift

EMERGENCY SHIFT TICKET and EVALUATION FORM						Contractor Name	
The responsible Government Officer will complete this form each shift						H2O For You	
Incident or Project Name		Incident Number		Request Number		Operator #1	Operator #2
August Complex West Zone		CAMEU010843		E-89		James Russell	
Agreement Number						Operator Furnished By:	
LNU11111199						<input checked="" type="checkbox"/> Contractor	<input type="checkbox"/> Government
Equipment Make		Equipment Model / Type				Operating Supplies Furnished By:	
Peterbilt		2000 Gallon				<input checked="" type="checkbox"/> Contractor	<input type="checkbox"/> Government
Serial Number		Licence Number				Equipment Status	
11145N		SE653574				<input checked="" type="checkbox"/> Inspected	<input checked="" type="checkbox"/> Under Agreement
Equipment Use						Released by Government	
(Circle) <u>hours</u> / Days / Miles						Withdrawn by Contractor	
Date	Start	Stop	Work	Assignment			
Mo / Day							
8/3	0001	0700	7	Off Shift			
8/3	0700	2000	13	Division B			
8/3	2000	2400	4	Off Shift			
Vendor Rating						Govt. Rep. Name and Position - PRINT	
		Poor*	Avg.	Good	Exc.	N/A	Steve Hampton, Div B
Met Performance Expectations						Govt. Rep. Signature	
Equipment in Safe Working Condition						Steve Hampton	
Operator Skill Level						Contractor Signature	
Operates Safely						James Russell	
Operator's Cooperation Level						Date	Time
Overall Performance						08/03/20	2000
* NOTE: Any rating of POOR requires an explanation in Comment Section.						CALFIRE 297	
**Final evaluation or for more documentation, use an ICS Form 230 or equivalent.						(Rev 3-2011)	

Pink - Finance

Blue - Home Unit HE Coordinator

Yellow - Vendor

White - Govt Representative

# 24 Hour Shift

EMERGENCY SHIFT TICKET and EVALUATION FORM					Contractor Name	
The responsible Government Officer will complete this form each shift						
Incident or Project Name		Incident Number		Request Number		Contractor Name
August Complex West Zone		CAMEU010843		E-99		Fireline Builders
Operator #1		Operator #2		Operator Furnished By:		
Jim Smith		John Jones		<input checked="" type="checkbox"/> Contractor <input type="checkbox"/> Government		
Agreement Number		Equipment Make		Operating Supplies Furnished By:		
LNU01234567		CAT		<input checked="" type="checkbox"/> Contractor <input type="checkbox"/> Government		
Equipment Model / Type		Serial Number		Equipment Status		
Dozer D6H		6LN3344		<input checked="" type="checkbox"/> Inspected <input checked="" type="checkbox"/> Under Agreement		
Licence Number		Equipment Use		Released by Government		
		(Circle) <u>hours</u> / Days / Miles		Withdrawn by Contractor		
Date	Start	Stop	Work	Assignment		
Mo / Day						
8/2	0700	2400	17	Division J		
8/3	0001	0700	7	Division J		
Remarks/Comments **						
Vendor Rating						
Poor*		Avg.		Good		Exc. N/A
						Mike Brown Div J
Met Performance Expectations		Equipment in Safe Working Condition		Operator Skill Level		Govt. Rep. Signature
						<i>Mike Brown</i>
Operates Safely		Operator's Cooperation Level		Overall Performance		Contractor Signature
						<i>Jim Smith</i>
						Date
						08/03/16
						Time
						0700
* NOTE: Any rating of POOR requires an explanation in Comment Section.						CALFIRE 297
**Final evaluation or for more documentation, use an ICS Form 230 or equivalent.						(Rev 3-2011)
Pink - Finance		Blue - Home Unit HE Coordinator		Yellow - Vendor		White - Govt Representative

# 12 Hour Shift

EMERGENCY SHIFT TICKET and EVALUATION FORM					Contractor Name	
The responsible Government Officer will complete this form each shift						
Incident or Project Name		Incident Number		Request Number		Contractor Name
August Complex West Zone		CAMEU010843		E-89		H2O For You
Operator #1		Operator #2		Operator Furnished By:		
James Russell				<input checked="" type="checkbox"/> Contractor <input type="checkbox"/> Government		
Agreement Number		Equipment Make		Operating Supplies Furnished By:		
LNU1111199		Peterbilt		<input checked="" type="checkbox"/> Contractor <input type="checkbox"/> Government		
Equipment Model / Type		Serial Number		Equipment Status		
2000 Gallon		11145N		<input checked="" type="checkbox"/> Inspected <input checked="" type="checkbox"/> Under Agreement		
Licence Number		Equipment Use		Released by Government		
SE653574		(Circle) <u>hours</u> / Days / Miles		Withdrawn by Contractor		
Date	Start	Stop	Work	Assignment		
Mo / Day						
8/2	0001	0700	7	Off Shift		
8/2	0700	2000	13	Division B		
8/2	2000	2400	4	Off Shift		
Remarks/Comments **						
Vendor Rating						
Poor*		Avg.		Good		Exc. N/A
						Steve Hampton, Div B
Met Performance Expectations		Equipment in Safe Working Condition		Operator Skill Level		Govt. Rep. Signature
						<i>Steve Hampton</i>
Operates Safely		Operator's Cooperation Level		Overall Performance		Contractor Signature
						<i>James Russell</i>
						Date
						08/02/16
						Time
						2000
* NOTE: Any rating of POOR requires an explanation in Comment Section.						CALFIRE 297
**Final evaluation or for more documentation, use an ICS Form 230 or equivalent.						(Rev 3-2011)
Pink - Finance		Blue - Home Unit HE Coordinator		Yellow - Vendor		White - Govt Representative



# CAL FIRE

## INCIDENT MANAGEMENT TEAM

### WATER USAGE LOG

DATE: \_\_\_\_\_

Division / Group: \_\_\_\_\_

AGENCY ID / VENDOR: \_\_\_\_\_

I.e., Strike Team 1110C, Acme Water Tenders

REQUEST # \_\_\_\_\_

**TURN INTO FINANCE DAILY**

WATER SOURCE LOCATION	Hydrant	Open source i.e. pond	Tank	Gallon s Used	Property Owner / Contact Number if known **

**\*\*Please note if you made contact with property owner and their contact.**

Information: \_\_\_\_\_

This document is intended to track, record and validate the amount of water used on a incident. It's not intended to review the performance of equipment using the water on an incident.



# PUBLIC INFORMATION SECTION



**Incident Information Line:**  
**South Zone (949)433-2638    North Zone (530)628-0039**

Status	
Incident Start Date: 7/30/2021	Incident Start Time: 6:00 p.m.
Total acres:	Containment:
Cause: Lightning	Total Personnel:

**MEDIA** – The California State Penal Code Section 409.5(d) allows the news media to enter scenes of disaster, riot or civil disturbance. Properly identified members of the news media should not be restricted from entering locations specified within the code. However, this does not include crime scenes, private property and does not imply that the news media may interfere with incident operations while they are in the areas of concern. More information can be found [here](#).



**CAL FIRE SOCIAL MEDIA POLICY** – When assigned to a CAL FIRE incident, you will adhere to the CAL FIRE Social Media Policy, Section 0691. You can find further information about the CAL FIRE Social Media Policy [here](#).



**PHOTOGRAPHS AND VIDEOS OF INCIDENT** – We are in a new era of media. Media no longer means news/broadcast industry, but now refers to anyone that has the capability to shoot video, photographs and post them onto social media sites in a matter of minutes. Unfortunately, we have seen some instances of photographs or videos that have depicted unsafe, unprofessional or embarrassing circumstances which are a serious breach of ethics. When this happens, it reflects poorly on all that are attached to this incident. Posting an inappropriate video, photo or blog comment could expose oneself to unwanted ramifications. It may be unsafe to shoot photos or video and a firefighter who is concentrating on a camera loses their situational awareness.

The Public Information Office would like copies of the video and pictures that you safely took while not in an emergency situation, fire suppression activity or in an overhead assignment. Bring your video and pictures to the Public Information trailer; they will be reviewed and possibly uploaded to our many CAL FIRE social media sites. Remember, we don't want photographs or videos that depict unsafe, unprofessional or embarrassing circumstances, which are a serious breach of ethics.



**LOST AND FOUND** – The Information Section will manage lost and found items for the incident.

**MAIL SERVICE** – The Information Section can assist you with sending and receiving mail.

**Anderson Fairgrounds**  
 ATTN: South Zone Monument Fire Information  
 (Your Name)  
 1890 Briggs Street  
 Anderson, CA 96007

## TRAINING MESSAGE

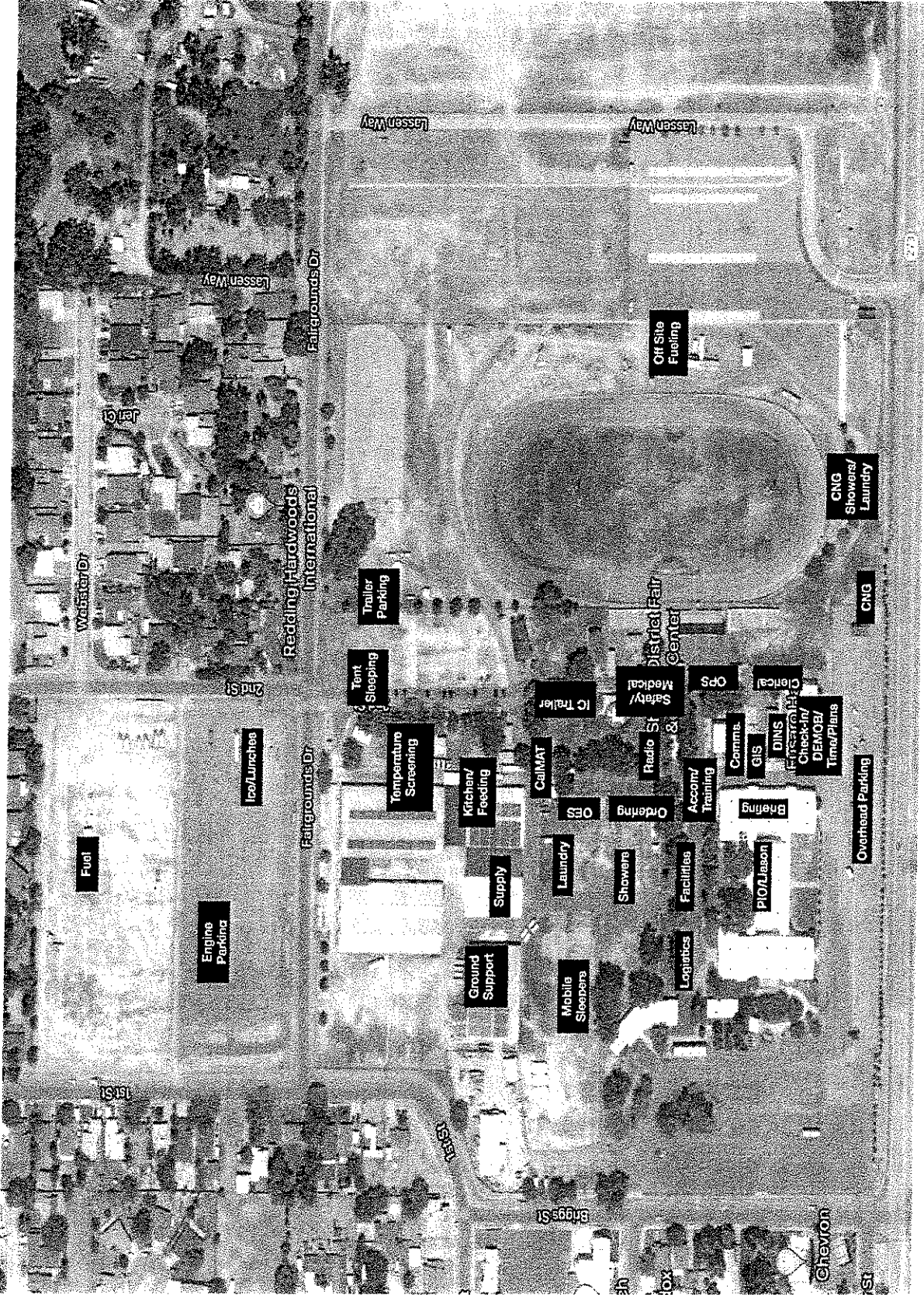
If you have just arrived at The Monument Fire as a Trainee, please don't forget to check in with the Training Specialist.

**Do you want credit for this assignment?**

Please make sure to check out with Training before you demob

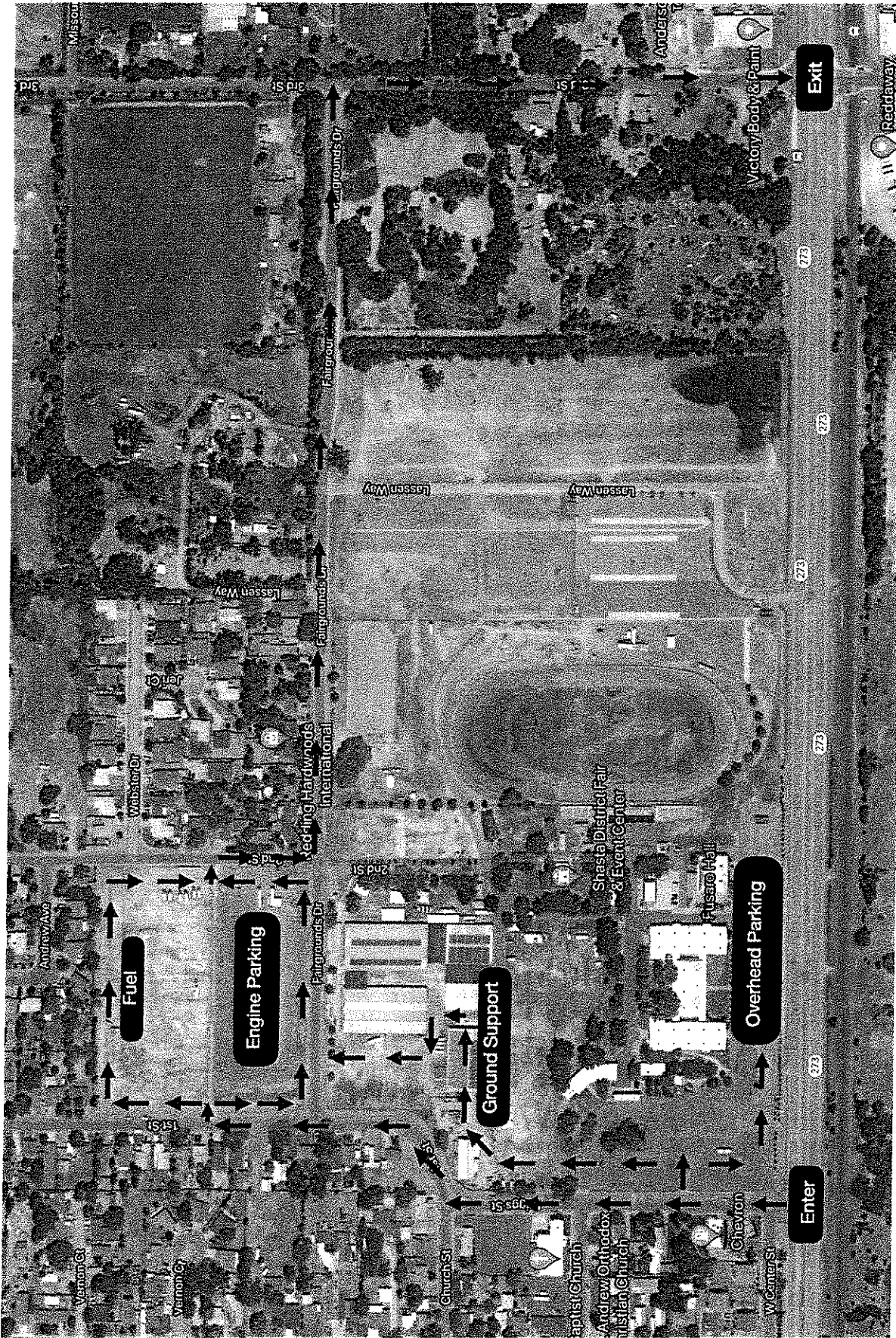
Training is located behind the Briefing Hall  
It only takes a few minutes to check in.





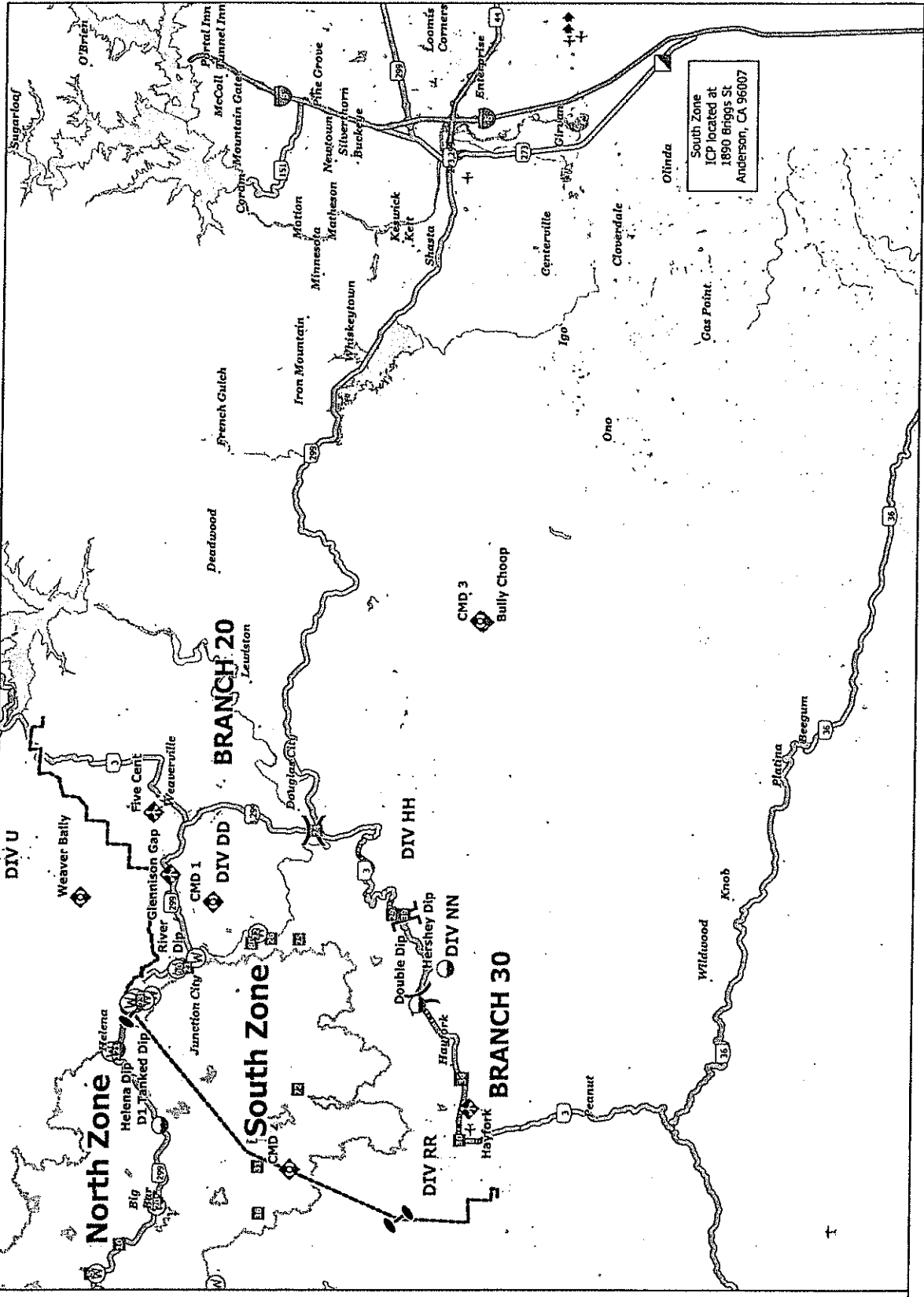
MONUMENT FIRE  
 ANDERSON FAIRGROUNDS  
 FACILITIES MAP  
 CA-SHF-001187






**MONUMENT FIRE  
ANDERSON FAIRGROUNDS  
FACILITIES MAP  
CA-SHF-001187**




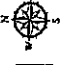



South Zone  
ICP located at  
1890 Briggs St  
Anderson, CA 96007



**Transportation**  
Monument Fire  
CA-SHF-001187

- Dip Site
- X Division Break
- | Branch Break
- I Zone Break
- Incident Command Post
- Drop Point
- ◇ Mobile Weather Unit
- ⊕ Repeater
- ⊕ Water Source
- ⊕ Other
- ▭ Wildlife Daily Fire Perimeter



DEMOBILIZATION PLAN  
MONUMENT INCIDENT  
CA-SHF-001187

DEMOM PROCEDURES



- Check the demob list daily. You can find the demob list posted around camp or by utilizing the QR code on your IAP.
- **Please report to demob only at your scheduled time.**
- **Only one person per resource is to report to demob.**
- **Every effort will be made to provide a remote demob.**
- The Demob Unit will provide you with an ICS-221 check-out form.
- For the following units, demob personnel will make radio contact to ensure you are clear for demobilization:
  - Supply Unit
  - Communications Unit
  - Accommodations Unit (If applicable)
- For the following units, you will report in person to complete your check-out:
  - Time Unit
  - Documentation Unit
  - Training Specialist (If applicable)
  - Ground Support Unit
- Return your completed ICS 221 to the Demob Unit and you will be advised of your status (released home, reassigned, etc.)

Greg Barnhart  
Demobilization Unit Leader  
CAL FIRE Incident Management Team 5

## FIRING OPERATION CHECKLIST

Location: \_\_\_\_\_

Date: \_\_\_\_\_ Time: \_\_\_\_\_

Firing Supervisor \_\_\_\_\_

### 1. Personnel Briefing

- Objectives
- Conditions (fire environment)
- Resource assignments identified
  - Firing personnel
  - Holding forces
  - Lookouts
- Ignition plan/sequence
- Communication Plan
- Contingency Plan
- Safety issues

### 2. Go / No-Go

- All personnel briefed
- Weather forecast reviewed
- Resources in place
- Lookouts posted as needed
- Anchor and termination firing points identified
- Communications systems in place
- Fire behavior forecast reviewed
- Escape routes and safety zones established and made known
- Adjoining forces/Air Attack notified

### 3. Approval Prior To Firing

- Division Supervisor
- Branch Director
- Operations

### 4. Other Notifications

- Other: \_\_\_\_\_
- Other: \_\_\_\_\_

Attach Firing Operations Checklist to ICS-214





