

INCIDENT ACTION PLAN MONUMENT SOUTH INCIDENT

CA-SHF-001187

Thursday



9/2/2021 0700

to

9/3/2021 0700



North Zone

South Zone

INCIDENT OBJECTIVES (ICS 202)

1. Incident Name: <p style="text-align: center;">Monument South</p>	2. Operational Period:	Date From: 9/2/2021 Time From: 0700	Date To: 9/3/2021 Time To: 0700
---	-------------------------------	--	------------------------------------

3. Objective(s):

Management Objectives

- Ensure that the strategies and tactics provide for firefighter and public safety through the application of sound risk management.
- Minimize the threat to private property, communities, businesses, and critical infrastructure.
- Establish and strengthen cooperators, partners, and stakeholder relationships.
- Follow identified standard procedures to minimize the spread of Covid-19.
- Communicate effectively and often with the public and surrounding communities.
- Minimize the cost of the incident by employing tactics that have the highest probability of success while minimizing firefighter exposure.

Control Objectives

- Keep the fire North of Highway 3 and Highway 36.
- Keep the fire South of Siskiyou and Trinity County line, while preserving wilderness characteristics.
- Keep the fire East of the South Fork of the Trinity River and the New River.
- Keep the fire West of Highway 3.

General Situational Awareness:

- See attached Safety Message.

5. Site Safety Plan Required? Yes No

Approved Site Safety Plan(s) Located at:

6. Incident Action Plan

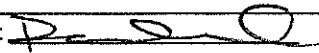
<input checked="" type="checkbox"/> ICS 203	<input checked="" type="checkbox"/> ICS 215A	<input type="checkbox"/> ICS 205 A	<input type="checkbox"/>
<input checked="" type="checkbox"/> ICS 204	<input checked="" type="checkbox"/> ICS 220	<input checked="" type="checkbox"/> Training Message	<input type="checkbox"/>
<input checked="" type="checkbox"/> ICS 205	<input type="checkbox"/> Facility Maps	<input checked="" type="checkbox"/> Travel Map	<input type="checkbox"/>
<input checked="" type="checkbox"/> ICS 206	<input checked="" type="checkbox"/> Weather Forecast	<input checked="" type="checkbox"/> Demob Plan	<input type="checkbox"/> County Health Message
<input checked="" type="checkbox"/> ICS 208	<input checked="" type="checkbox"/> Fire Behavior	<input checked="" type="checkbox"/> Finance Message	<input checked="" type="checkbox"/> ICS 214

7. Prepared By: Ryan Davis **Position/Title:** PSC **Signature:**

8. Approved by Incident Commander: Chris Trindade **Signature:**

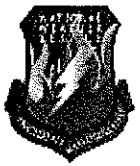
ICS 202 NIMS IAP

ORGANIZATION ASSIGNMENT LIST (ICS 203)

1. Incident Name: Monument South		2. Operational Period: Date From: 9/2/2021		Date To: 9/3/2021	
		Time From: 0700		Time To: 0700	
3. Incident Commander(s) and Command Staff:			7. Operation Section:		
IC/UC's	Mike Parkes / Chris Trindade (T)	Operations	Andy Turner		
Deputy	Todd Hopkins	Deputy Operations	Jim Hudson		
Safety Officer	Jack Piccinini / Tim Irwin	Night Ops	Steven Ward		
Information Officer	Scott McLean / Ken Haskett (T)	Staging Area			
Liaison Officer	Mike Urquides / John Davis	Branch	20	R. Reynolds 12HR	
4. Agency/Organization Representatives:		Division/Group	DD / HH	Ryan Pack	
Agency/Organization	Name	Division/Group			
Cal Fire SHU	Dan Dennett	Division/Group			
Trinity Sherriffs Office	Bryan Ward	Division/Group			
CHP	Brandon Lale	Division/Group			
SPI	Herb Baldwin	Branch	30	Mark League / Jeff Loveless (T)	
PG&E	David Hotchkiss	Division/Group	NN	John Capen	
CDCR	Byron Connor	Division/Group	RR	Clint Swensen	
CCC	Jose Murillo	Division/Group			
Wildfire Def. System	Ross Fillmore	Division/Group			
OES	Pat Titus	Division/Group			
CNA	Mason Chinowith	Branch	Contingency	Bryan Farrell 12HR	
DOT / DIST. 1	Tom Fitzgerald	Division/Group	South Cont 1	Levi Randolph 12HR	
DOT / DIST. 2	Eric Akana	Division/Group	South Cont 2	Mike Watner 12HR	
ISP LIASON	Paul Armstrong	Division/Group			
		Division/Group			
		Division/Group			
		Branch			
		Staging Area	Hayfork	Brandyn Labrue 12HR	
5. Planning Section:		Division/Group			
Chief	Ryan Davis / David Wood (T)	Division/Group			
Deputy	Sean Griffis	Division/Group			
Resource Unit	McCarroll / Holliday (T) / Roland (T)	Division/Group			
Situation Unit	SeLegue / Day / Scheeline (T)	Branch			
Documentation Unit	Kim Moore / Vicki Day	Division/Group	FSR	Jed Washburn 12HR	
Demobilization Unit	Greg Barnhart	Division/Group			
GISS	Matt Turner	Division/Group			
FBAN	Troy Vlein	Division/Group			
IMET	Royce Fontenot	Division/Group			
Training Tech Spec	Morgan Madruga	Air Operations Branch	Director:	Niko Matteoli	
Hired Equipment Tech Spec	Danial Hu / Brian Bowman	Air Support Group Supervisor	Josh faulkner		
Crew Tech Spec		Air Tactical Group Supervisor			
6. Logistics Section			Helibase Manager	Gary Engen	
Chief	Tim Fitzgerald				
Supply Unit	Mike Worford	8. Finance/Administration Section:			
Facilities Unit	Heather Thurston / Josh Randol (T)	Chief	Tiffany Tracy		
Ground Support Unit	Steve Langston / Matt Bellows	Time Unit	Matt Rea / Heather Constable (T)		
Communications Unit	Chris Johns	Procurement Unit	Tammy Nolan		
Medical Unit	Josh Staley	Comp/Claims Unit	Bud Sulins		
Motel Unit	Angel Hendrie	Cost Unit	Mike Kennefic		
Food Unit	Steve Chapin				
Prepared By: Name:	David Wood	Position/Title:	PSC	Signature:	
ICS 203		Date/Time:	9/1/2021 2300 hours		



Monument South Zone Fire Weather Forecast



FORECAST NO: 15
PREDICTION FOR: Thu 0700 to Fri 0700
SHIFT DATE: September 2, 2021
FORECAST ISSUED: 2000 PDT September 1, 2021

NAME OF FIRE: Monument Fire
UNIT: SHF
SIGNED: *Royce Fontenot*
 Incident Meteorologist

WEATHER DISCUSSION: Seasonal temperatures are expected today with humidity values falling into the mid-teens. Temperatures and low humidity values will be moderated somewhat in areas of dense smoke. Winds will be terrain driven today with an easterly/down canyon flow in the morning switching to a westerly/up canyon flow late in the afternoon before returning to an easterly flow around midnight. Terrain driven winds may be locally enhanced in areas with partial clearing. Humidity values will begin to recover shortly after sunset in lower elevations and after midnight along ridgetops.

THURSDAY:

WEATHER: Smoke, dense at times. Areas of partial clearing along ridges.
MAX TEMPERATURES: 85-89°F full sunshine, 78-83°F elsewhere under smoke.
MIN HUMIDITY: 15-26%, highest values where heavy smoke lingers.
20 FT WINDS: Ridges: E-ESE 4-7 mph with gusts to 8 mph. Winds shifting to the W-WNW and becoming 8-12 mph gusts to 15 mph around 1500.
Drainages: Branch 20: E/Down canyon 1-3 mph increasing to 3-5 mph 1200. Winds becoming W/Up canyon 4-6 mph gusts to 8 mph around 1600.
Branch 30: E/Down canyon 2-4 mph increasing to 3-5 1200. Winds becoming west 4-7 mph gusts 10 mph around in Div RR by 1400 and by 1600 in Div NN.
LAL: 1
CWR: 0%
MIXING HEIGHT: 500 ft AGL increasing to 8,000 ft AGL in the afternoon.
TRANSPORT WIND: E 5-10 mph becoming W 5-10 in the afternoon

THURSDAY NIGHT:

WEATHER: Smoke, dense at times with low visibility.
MIN TEMPERATURES: 48-58°F, warmest in thermal belts above 1000 feet.
MAX HUMIDITY: Valley 60-70%. Ridges 40-55%
20 FT WINDS: Ridges: W-WNW 7-11 mph with gusts 13 mph diminishing and becoming E-ESE 4-6 mph by 2300
Drainages: W/Up Canyon winds 4-7 mph with gusts 10 mph becoming E/Down Canyon 2-4 mph by 2300.
LAL: 1
CWR: 0%
MIXING HEIGHT: 8,000 ft AGL decreasing to 500 ft AGL overnight.
TRANSPORT WIND: W 5-10 mph becoming E 5-10 overnight.

Friday/Saturday Outlook: Temperatures remain near seasonal values through Friday but will start to rise on Saturday. Afternoon humidity values will remain in the mid-teens with moderate recoveries. Winds will remain in a typical diurnal wind pattern.

RAWS Observations



Submit Observation



FIRE BEHAVIOR FORECAST

FORECAST NUMBER: 16

TYPE OF FIRE: Wildland Fire

FIRE NAME: Monument

OPERATIONAL PERIOD: 24hr 09-02-2021

DATE ISSUED: 09-01-2021

TIME ISSUED: 2100

UNIT: SHU

SIGNED:  Troy Velin - FBAN

INPUTS

WEATHER SUMMARY

Light Easterly and then West today.
See Incident Weather Forecast in IAP

FIRE BEHAVIOR:

GENERAL:

Fuels and Fire Behavior Advisory issued 07-17-2021

Topography is steep and rugged ranging from 2000' in the valleys and 6000' on higher peaks. Slope in many instances is 100%. This terrain promotes fire growth through roll out and slope reversal. Many of the drainages align with predominant wind patterns for the region. The Trinity River corridor is a major drainage that funnels wind primarily East and West. There are major bends in the river that will create eddy's and swirling winds.

Fuels in the fire area range from timber and timber understory in higher elevations, heavy brush in mid elevations and grass oak woodland in valley bottoms. Extreme Drought this year has stressed fuels to critical fuel moistures. 1000 hr fuels recorded July 15 were 7%, LFM in brush is now at 80%. The dryness of the fuels in the area are a major contributor to the Monument Fire's growth.

Fires in this area commonly have large growth periods of 1 to 2 days usually aided by windy conditions. Following the large growth periods there are usually several days of slowed growth due to heavy smoke inversions. This has been the scenario for the Monument Fire. September is generally hot and dry during the day and we begin to see more temperate overnight conditions.

SPECIFIC:

Branch 20

Smoldering fire interior of the line. Monitor for roll out.

Branch 30

DIV NN – Minimal fire behavior under smoke inversion.

DIV RR – As the fire continues to back down toward Hyampom Rd, roll out and slope runs will be possible. Hyampom road is the wind corridor for up-canyon / down-canyon winds in the Hayfork valley. A previous burn scar has left numerous snags in the area which will need to be monitored as they will be likely to cast embers across the road. The little Creek drainage will continue to burn out and this will add smoke to the already stubborn inversion. Although not likely today, any disruption to the smoke inversion will promote rapid increases in fire behavior.

South Zone Contingency

Be cautious operating equipment in critically dry fuels.

AIR OPERATION:

Smoke is expected to be over most of the fire area today. Best chance for clearing is DIV RR

SAFETY

Poor visibility will remain through the shift today. Spots will be difficult to identify and fire activity further West in the North Zone will be a challenge to monitor.

Fuels and Fire Behavior Advisory

Northern California

September 1, 2021 to September 15, 2021



Subject: Potential for extreme fire behavior due to critically low live and dead fuel moistures, very dry conditions resulting from persistent drought, minimal snowpack and spring precipitation, and elevated fire danger rating values across much of northern California.

Discussion: Fires burning in northern California are exhibiting extreme fire growth based on critical fuel conditions. Fire spread is fuel driven and does not depend on wind to spread. Events with wind have led to extreme rates of spread. Surface fuels are very receptive to embers. Long range spotting, area ignition, and group torching is occurring on large fires frequently.

Difference from normal conditions: Northern California is in a drought; currently with 90% at Extreme to Exceptional levels. The drought is expected to persist or intensify thorough out the fire season. Deficient rainfall and snowpack with early melt off has resulted in fuels that are below average in dryness, with record setting conditions for most areas.

Concerns to Firefighters and the Public:

- Energy Release Component (ERC) at numerous weather stations set record maximums already this year and are running at or above the 97th percentile in most cases. Expect increased fire intensity and spread rates in these areas. Early season extreme fire behavior has been observed in both light and heavy fuels. **Anticipate increased spread rates, spotting, and active nighttime burning.**
- The combination of persistent drought and record-low rainfall and snowpack amounts has led to very low live and dead fuel moistures. Low 1000-hour fuel moistures have been evidenced by complete consumption of dead fuels on recent fires. Live fuel moistures in grasses, shrubs and trees, have already reached critical levels in many areas of Northern California due to limited green-up this spring. **Expect fires to ignite easier and spread faster. Do not expect fires to exhibit reduced fire behavior when entering areas of live fuels; anticipate increased spread rates and spotting.**
- Direct attack is often not feasible under regular diurnal wind conditions with ground resources. And aviation utilization is often insufficient in moderating rate of spread without immediate heavy ground resource response. **Anticipate higher resistance to control in all fuel types.**
- Already this year, Northern California has experienced large fire activity and multiple team deployments. California will likely experience an extended fire season. It is important to be mindful of and manage fatigue for all resources. **Everyone, every day, returns home safely.**

Mitigation Measures:

- Local and inbound fire personnel need to be aware that fire behavior across the state is exceeding normal expectations for this time of the year. **Local briefings need to be thorough and highlight specific fire environment conditions. These include but are not limited to local weather forecasts, Pocket Cards, ERC's, live and dead fuel moistures.**
- Suppression actions need to be based on good anchor points, escape routes, and safety zones. **Remember LCES. Experienced lookouts are essential under these conditions.**
- Base all actions on current and expected behavior of the fire. **Augment initial attack resources as incident activity dictates.**

Area of Concern: Northern California except for the following Predictive Service Areas: North Coast and Bay Marine, west of Highway 101 in Mid-Coast to Mendocino and Diablo-Santa Cruz, and the north eastern portion of Far Eastside.



Monu Monument Fire South Zone
HEALTH AND SAFETY MESSAGE



INCIDENT: Monument – CA SHF-001187

DATE: September 2, 2021

TIME: 0700-0700

24 HOUR SAFETY EMPHASIS
ROCKS AND BOULDERS – EMOTIONAL FATIGUE – COMPLACENCY

ROCKS AND BOULDERS

GROUND COVER HAS BURNED EXPOSING LOSE ROCKS AND BOLDERS

Watch Out - Be on the lookout for lose rocks and boulders

- Rocks may roll for great distances down slope
- Rocks and boulders may even become airborne
- Lose gravel, rocks and boulders may end up on roadways

Mitigation – Maintain high level of situational awareness for rolling rock and boulders

- Watch out in areas with steep slopes
- Drive safely and be on the lookout for roadway hazards
- Listen for rolling rocks, and boulders and 'yell out' to others around you

EMOTIONAL FATIGUE

FATIGUE CAN CAUSE US TO SACRIFICE SAFETY FOR THE SAKE OF THE TASK

Watch Out - Emotional fatigue can disguise itself

- Look for short fuse attitudes, sharp tongue responses and change in overall behavior
- Feeling anxious, difficulty concentrating, increased cynicism or pessimism, and sense of dread
- Look for signs and symptoms among your fellow workers, irritability, anger, depression

Mitigation - Promote open discussions

- Get as much quality rest as possible
- Practice mindfulness
- Talk about difficult situations amongst your peers

COMPLACENCY

DON'T GET LULLED INTO SLACKING OFF ON LINE LEADERSHIP

Watch Out – Remain focused on the right stuff

- Improper or no PPE being used on the fire line
- Lack of awareness to safety or conditions on the fire
- Repeated assignments can lead to complacency making personnel more vulnerable to accidents

Mitigation - Stay in the game

- Ensure all necessary PPE is always being utilized when appropriate
- Spot check personnel and reaffirm operational tactics and safety for the assignment
- Reassess usefulness of the personnel and ensure situational awareness is maintained

Each Safety Message is designed for a daily Tailgate Safety discussion

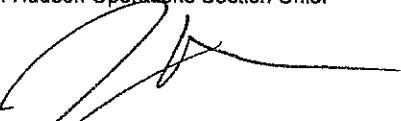
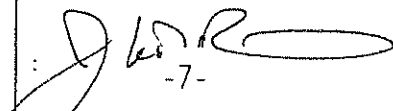
REMAIN FIRE FOCUSED AND COVID-19 AWARE

Jack Piccinini

IMT 5 SAFETY OFFICER



Monument South Zone RISK ANALYSIS (ICS 215a)

DIV	HAZARDOUS ACTIONS/CONDITIONS	MITIGATIONS / WARNINGS / REMEDIES
ALL	PHYSICAL FATIGUE EMOTIONAL FATIGUE DEHYDRATION	Be alert for signs of fatigue and take breaks as necessary. Monitor incoming resources for level of fatigue. Drink water before, during and after shifts, up to 1.5 gal. per shift. Be alert for signs of heat stress in yourself and others; use the buddy system. Eat small meals often and when possible. Find shade when you can. Drink electrolyte drinks at a 2 water to 1 sport drink ratio.
ALL	HAZARD TREES/TREE FELLING SAFETY	Look up, look down, look around when entering timber. Identify and isolate the area to provide for the safety of others. Flag and make proper notifications. Do not leave incomplete falling operations. Monitor when mopping up. Watch where you park. Size up and mitigate concerns, work within your qualifications.
RR	FIRING OPERATIONS	Have Firing Plan known to all and insure it is understood before implementation. Ensure Go-No-Go checklist is adhered to and communicated to operations. Confirm correct tactical frequency for firing operation. Communicate start and finish firing times to all personnel.
ALL	COMPLACENCY	Don't underestimate the task at hand. Wear full PPE while on the line. Everyone should be briefed on the conditions and circumstances regarding the fire and their assignments per the IRPG. Today is different than last shift, even if in the same area.
NN/RR	INCREASING FIRE BEHAVIOR	Know your LCES and maintain Situational Awareness. Use experienced Lookouts. Monitor weather for changes in the wind, temp, and RH during the shift. Have a contingency plan with established decision points and safety zones.
ICP Ground Support	GENERAL TRAFFIC	Watch out for pedestrian and vehicle congestion. Provide spotters when backing or driving in tight places. Adhere to the 5-mph speed limit while in base camp.
NN/RR	AIRCRAFT OPERATIONS	Monitor air-to-ground frequency, they are your eyes in the sky. Use air-to-ground frequency to communicate with aircraft. Use clear, concise statements when directing aircraft. Clear the area for incoming water and retardant drops.
NN/RR	HEAVY EQUIPMENT	Watch for rolling material avoid working below heavy equipment. Monitor safe working distances provide adequate working space. Utilize communication with the operators, stop if poor visibility (via radio)
ALL	DRIVING HAZARDS	Complete appropriate DOT daily vehicle inspection. Slow Down! Long travel times to the line, stay alert. Stop if fatigued. Drive defensively and responsibly, not distracted or impaired. Drive with headlights and seatbelts on. Narrow roads with limited passing room. Expect roads to deteriorate over the shift.
ALL	COMMUNICATIONS	Confirm correct tactical and command channel. No unassigned radio channels. Check your Air to Ground to make sure it is correct for your branch. Check your command and tactical frequencies if you have moved branches or divisions. Ensure correct communication with neighboring federal zones.
ALL	COVID 19	Wear a mask when applicable. Utilize hand sanitizer and wash hands frequently. Maintain social distancing. Disinfect apparatus and coolers frequently. Adhere to local, state and federal Covid-19 guidelines. Advise supervisor if you feel sick.
ALL	DEMOBILIZATION	Ensure a minimum of 8 hours of sleep off shift prior to leaving incident. Safe vehicle operation during demob, includes, safe speed, and the use of backing personnel when appropriate. Understand and communicate travel route before leaving the incident. Ensure all supplies are obtained prior to departure.
Jim Hudson Operations Section Chief 		Jack Piccinini, Safety Officer: 

DATE PREPARED:
September 01, 2021
 Operation Period
September 2, 2021

ASSIGNMENT LIST (ICS 204 WF)

CONTROLLED UNCLASSIFIED
INFORMATION//BASIC

1. Incident Name: Monument South	2. Operational Period: Date From: 09/02/21 Date To: 09/03/21 Time From: 0700 Time To: 0700	3. Branch Division 30 NN
---	---	---

4. Operations Personnel: Page 1 of 1 November-November

Operations Section Chief: Andy Turner	Night Ops: Steven Ward
Branch Director: Mark League / Jeff Loveless (T)	Branch Safety:
Division/Group Supervisor: John Capen	Air Attack:

5. Resources Assigned:		** Resources Below in Bold are 12 Hour **					
Resource Identifier	ALS	LWD	Leader	Personnel	Request #	Hours	Reporting Location
STC OES 6808C			STEVE KEAN	19	E-10250	0700-0700	DP 33
STC						0700-0700	DP 33
ENG PVT GCT 80			KEN DELYRIA	3	E-10506	0700-1900	DP 33
ENG BIA 441			DERRICK TINNO	3	E-10508	0700-1900	DP 33
ENG PVT SMOKEHOUND			CORY GRAHAM	3	E-10532	0700-1900	DP 33
ENG BLM 8603			MATT SPECHT	3	E-10533	0700-1900	DP 33
ENG PVT E3			ROBERT MCGIRR	3	E-10550	0700-1900	DP 33
ENG GBF 69			DAVIS GRASS	3	E-10552	0700-1900	DP 33
STG MEU 9115G			JEREMY ORNELAS	35	C-10005	0700-0700	DP 33
CRW LNU DELTA 3			JASE INDREBO	15	C-10010	0700-0700	DP 33
W/T PVT E-10114 TRAHAN			ROBERT LATHAM	1	E-10114	0700-1900	DP 33
W/T PVT E-10133 PANKEY			CHAD PANKEY	2	E-10133	0700-0700	DP 33
CHIP						0700-1900	DP 33
HEQB CRANDALL			KEVIN CRANDALL	1	O-10330	0700-0700	DP 33
SOFR WILLIAMS						0700-0700	DP 33
SOFR CRADOCK			DAVID CRADOCK	1	O-10393	0700-0700	

6. Work Assignments:
 Hold fire in planned control lines.
 Mop up 200' in from control lines or 100%.
 Backhaul all trash.

7. Special Instructions:
 ARCH Allison Young, ARCH Joe Stokes, REAF Forrest Coots, REAF Anna Plumb and REAF Cynthia Armentrout will be working in BRANCH XXX DIV NN.

8. Communications

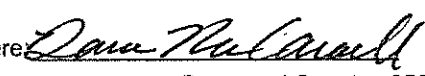
Name	Ch	Function	Rx Freq	Rx Tone	Tx Freq	Tx Tone	Notes
CDF C2	1	COMMAND	151.2650	103.5 (T8)	159.3300	151.4 (T14)	
VFIRE 24	5	TACTICAL	154.2725	156.7 (T6)	154.2725	156.7 (T6)	
CDF T25	14	AIR TO GROUND	159.2775	192.8 (T16)	159.2775	192.8 (T16)	A/G TACTICAL
CALCORD	15	MEDICAL	156.0750	156.7 (T6)	156.0750	156.7 (T6)	MEDICAL COORDINATION
GUARD 31	16	AIRGUARD	168.6250		168.6250	110.9 (T1)	EMERGENCY USE ONLY

9. Prepared by: Name: Dana McCarroll RESL
 Signature:

ICS 204 Date/Time: 9/1/2021 2200 Personnel Count: 92

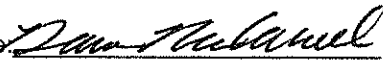
ASSIGNMENT LIST (ICS 204 WF)

CONTROLLED UNCLASSIFIED
INFORMATION//BASIC

1. Incident Name: Monument South		2. Operational Period: Date From: 09/02/21 Date To: 09/03/21 Time From: 0700 Time To: 0700			3. Branch 30		Division RR		
4. Operations Personnel:				Page 1 of 3		Romeo-Romeo			
Operations Section Chief: Andy Turner				Night Ops: Steven Ward					
Branch Director: Mark League / Jeff Loveless (T)				Branch Safety:					
Division/Group Supervisor: Clint Swensen				Air Attack:					
5. Resources Assigned:		** Resources Below in Bold are 12 Hour **							
Resource Identifier	ALS	LWD	Leader	Personnel	Request #	Hours	Reporting Location		
STC LNU 9141C			JIM CHRISTISON	17	E-10534	0700-0700	CEDAR GULCH		
STC SHU 9242C			TIM WHITEHURST	16	E-10183	0700-0700	CEDAR GULCH		
STC SHU 9246C			GARRET QUIGGLEY	20	E-10181	0700-0700	CEDAR GULCH		
STC RRU 9310C			A. BENNETT	16	E-10078	0700-0700	CEDAR GULCH		
T/F MONUMENT 1			RAYMOND BARBER		O-10390	0700-1900	CEDAR GULCH		
-ENG MDC 1 E-10376					E-10376	0700-1900	CEDAR GULCH		
-ENG LEC R MTN 1 E-10389					E-10389	0700-1900	CEDAR GULCH		
-ENG OR IFC E-10392					E-10392	0700-1900	CEDAR GULCH		
-ENG PVT INBOUND E-10527					E-10527	0700-1900	CEDAR GULCH		
-ENG PVT SCHOLL E-10553					E-10553	0700-1900	CEDAR GULCH		
T/F XLF 1341			JIM UNDERWOOD	17	E-10355	0700-0700	CEDAR GULCH		
ENG PVT NM 805			BRETT BOWER	3	E-10307	0700-1900	CEDAR GULCH		
ENG BRS 464			JAMES MARTINEZ	3	E-10507	0700-1900	CEDAR GULCH		
STG LNU 9146G			SEAN CASSATT	28	C-10013	0700-0700	CEDAR GULCH		
STG LNU 9147G			JOSH LAW	36	C-10012	0700-0700	CEDAR GULCH		
STG SHU 9240G CNA			MASON CHENOWITH	38	C-10006	0700-0700	CEDAR GULCH		
STG TGU 9254G			JASON LONG	32	C-10014	0700-0700	CEDAR GULCH		
STG BDU 9351G			JOSEPH HATCH	32	C-10004	0700-0700	CEDAR GULCH		
6. Work Assignments:									
Construct control lines as direct as possible.									
Prepare indirect control line for possible firing operation.									
Hold fire in planned lines.									
Mop up 200' in from control line or 100%.									
7. Special Instructions:									
ARCH Allison Young, ARCH Joe Stokes and REAF Forrest Coats will be working in BRANCH XXX DIV RR.									
Division RR will have a secondary command channel CDF C11 (Tone 11).									
T/F Monument 1 is an incident formed task force that includes the single increment engines listed below the task force in the 204.									
8. Communications									
Name	Ch	Function	Rx Freq	Rx Tone	Tx Freq	Tx Tone	Notes		
CDF C2	1	COMMAND	151.2650	103.5 (T8)	159.3300	151.4 (T14)			
CDF T26	6	TACTICAL	159.2925	192.8 (T16)	159.2925	192.8 (T16)			
CDF T25	14	AIR TO GROUND	159.2775	192.8 (T16)	159.2775	192.8 (T16)	AVG TACTICAL		
CALCORD	15	MEDICAL	156.0750	156.7 (T6)	156.0750	156.7 (T6)	MEDICAL COORDINATION		
GUARD 31	16	AIRGUARD	168.6250		168.6250	110.9 (T1)	EMERGENCY USE ONLY		
9. Prepared by: Name: Dana McCarroll			RESL		Signature: 				
ICS 204		Date/Time: 9/1/2021 2200		Personnel Count: 258					

ASSIGNMENT LIST (ICS 204 WF)

CONTROLLED UNCLASSIFIED
INFORMATION//BASIC

1. Incident Name: Monument South		2. Operational Period: Date From: 09/02/21 Date To: 09/03/21 Time From: 0700 Time To: 0700				3. Branch Division 30 RR	
4. Operations Personnel:						Page 2 of 3 Romeo-Romeo	
Operations Section Chief: Andy Turner				Night Ops: Steven Ward			
Branch Director: Mark League / Jeff Loveless (T)				Branch Safety:			
Division/Group Supervisor: Clint Swensen				Air Attack:			
5. Resources Assigned:		** Resources Below in Bold are 12 Hour **					
Resource Identifier	ALS	LWD	Leader	Personnel	Request #	Hours	Reporting Location
STG						0700-0700	CEDAR GULCH
DOZ MEU 1145			MATT WILSON	4	E-10548	0700-0700	CEDAR GULCH
DOZ NEU 2340			KATY MCMANUS	2	E-10164	0700-0700	CEDAR GULCH
DOZ TGU 2540			CHARLES BRYANT	3	E-10546	0700-0700	CEDAR GULCH
DOZ MVU 3345			MARTY ADAMS	2	E-10543	0700-0700	CEDAR GULCH
DOZ PVT E-10090 T & S			SEBASTIAN MAYNARD	2	E-10090	0700-0700	CEDAR GULCH
DOZ PVT E-10093 SGS			ERIC HEFTE	1	E-10093	0700-1900	CEDAR GULCH
DOZ PVT E-10097 JOHNSON			MATT JOHNSON	2	E-10097	0700-0700	CEDAR GULCH
DOZ PVT E-10103 MEEKER			JONATHAN MEEKER	2	E-10103	0700-0700	CEDAR GULCH
W/T PVT E-10006 BURGESS			DAVID BURGESS	1	E-10006	0700-0700	CEDAR GULCH
W/T PVT E-10011 HARRIS			JOHN ZAUBIRER	1	E-10011	0700-1900	CEDAR GULCH
W/T PVT E-10116 5 STAR			ASA BENNETT	1	E-10116	0700-0700	CEDAR GULCH
W/T PVT E-10118 DUNLAP			DAVID POLE	2	E-10118	0700-0700	CEDAR GULCH
W/T PVT E-10120 CLASS 1			CRAIG TARELLO	1	E-10120	0700-1900	CEDAR GULCH
W/T PVT E-10122 FIRE WATER			DANA CLEER	1	E-10122	0700-1900	CEDAR GULCH
W/T PVT E-10129 GASSAWAY			JULIO LOPEZ	2	E-10129	0700-0700	CEDAR GULCH
W/T PVT E-10276 D&G			GARY BROCK	2	E-10276	0700-0700	CEDAR GULCH
W/T PVT E-10285 SAGE			KAELUN KARMEN	2	E-10285	0700-0700	CEDAR GULCH
6. Work Assignments:							
Construct control lines as direct as possible.							
Prepare indirect control line for possible firing operation.							
Hold fire in planned lines.							
Mop up 200' in from control line or 100%.							
7. Special Instructions:							
ARCH Allison Young, ARCH Joe Stokes and REAF Forrest Coats will be working in BRANCH XXX DIV RR.							
Division RR will have a secondary command channel CDF C11 (Tone 11).							
8. Communications							
Name	Ch	Function	Rx Freq	Rx Tone	Tx Freq	Tx Tone	Notes
CDF C2	1	COMMAND	151.2650	103.5 (T8)	159.3300	151.4 (T14)	
CDF T26	6	TACTICAL	159.2925	192.8 (T16)	159.2925	192.8 (T16)	
CDF T25	14	AIR TO GROUND	159.2775	192.8 (T16)	159.2775	192.8 (T16)	AIG TACTICAL
CALCORD	15	MEDICAL	156.0750	156.7 (T6)	156.0750	156.7 (T6)	MEDICAL COORDINATION
GUARD 31	16	AIRGUARD	168.6250		168.6250	110.9 (T1)	EMERGENCY USE ONLY
9. Prepared by: Name: Dana McCarroll RESL							
						Signature: 	
ICS 204		Date/Time: 9/1/2021 2200			Personnel Count: 31		

ASSIGNMENT LIST (ICS 204 WF)

CONTROLLED UNCLASSIFIED
INFORMATION/BASIC

1. Incident Name: Monument South	2. Operational Period: Date From: 09/02/21 Date To: 09/03/21 Time From: 0700 Time To: 0700	3. Branch Division Contingency South Cont 1
---	---	--

4. Operations Personnel:		
Operations Section Chief: Andy Turner	Night Ops: Steven Ward	
Branch Director: Bryan Farrell 12HR	Branch Safety:	
Division/Group Supervisor: Levi Randolph 12HR	Air Attack:	

5. Resources Assigned:		** Resources Below in Bold are 12 Hour **					
Resource Identifier	ALS	LWD	Leader	Personnel	Request #	Hours	Reporting Location
ENG J3 CONTRACTING			SHAWN MODICA	3	E-10308	0700-1900	ICP
ENG PVT TIMBERLINE			JEROME ANTONIO		E-10563	0700-1900	ICP
CRW						0700-0700	ICP
CRW						0700-0700	ICP
DOZ PVT E-10095 MN MILLER			LELLO MARTINEZ	2	E-10095	0700-0700	ICP
DOZ PVT E-10099 MULLER			CHARLES MULLER	2	E-10099	0700-0700	ICP
DOZ PVT E-10106 K5 RANCH			JAMES KLAUER	2	E-10106	0700-0700	ICP
DOZ PVT E-10107 K5 RANCH			MITCH GILS	2	E-10107	0700-0700	ICP
DOZ PVT E-10109 PEARSON			JIMMY LUST	2	E-10109	0700-0700	ICP
DOZ PVT E-10110 LEWIS			TYLER LEWIS	2	E-10110	0700-1900	ICP
DOZ						0700-0700	ICP
W/T PVT E-10131 PALMER			STANLEY MIRANDA	1	E-10131	0700-1900	ICP
MAST PVT E-10156 STONE FLY			MICHAEL PURENI	1	E-10156	0700-1900	ICP
MAST						0700-0700	ICP
EXC						0700-0700	ICP
EXC						0700-0700	ICP
HEQB POBURKO			JASON POBURKO	1		0700-1900	ICP
HEQB CLEMENTINO			BRIAN CLEMENTINO	1	O-10400	0700-1900	ICP

6. Work Assignments:
 Plan secondary Control lines, begin if possible.
 Fall trees that will threaten control lines.
 Fall hazard trees.
 Improve contingency line previously completed.

7. Special Instructions:
 REAF Rudy Uribe, Reaf Andrew Christie and ARCH William Kerwin will be working in CONTINGENCY SOUTH I.

8. Communications							
Name	Ch	Function	Rx Freq	Rx Tone	Tx Freq	Tx Tone	Notes
CDF C2	1	COMMAND	151.2650	103.5 (T8)	159.3300	151.4 (T14)	
CDF T27	7	TACTICAL	159.3075	192.8 (T16)	159.3075	192.8 (T16)	
CDF T25	14	AIR TO GROUND	159.2775	192.8 (T16)	159.2775	192.8 (T16)	A/G TACTICAL
CALCORD	15	MEDICAL	156.0750	156.7 (T6)	156.0750	156.7 (T6)	MEDICAL COORDINATION
GUARD 31	16	AIRGUARD	168.6250		168.6250	110.9 (T1)	EMERGENCY USE ONLY

9. Prepared by: Name: Dana McCarroll RESL Signature: *Dana McCarroll*

ICS 204 Date/Time: 9/1/2021 2200 Personnel Count: 19

ASSIGNMENT LIST (ICS 204 WF)

CONTROLLED UNCLASSIFIED
INFORMATION//BASIC

1. Incident Name: Monument South	2. Operational Period: Date From: 09/02/21 Date To: 09/03/21 Time From: 0700 Time To: 0700	3. Branch Division Contingency South Cont 2
---	---	--

4. Operations Personnel:		Page 1 of 1
Operations Section Chief: Andy Turner	Night Ops: Steven Ward	
Branch Director: Bryan Farrell 12HR	Branch Safety:	
Division/Group Supervisor: Mike Watner 12HR	Air Attack:	

5. Resources Assigned:	** Resources Below in Bold are 12 Hour **						
Resource Identifier	ALS	LWD	Leader	Personnel	Request #	Hours	Reporting Location
DOZ PVT E-10102 CHUCK FRY			CHUCK FRY	2	E-10102	0700-0700	HAYFORK
DOZ PVT E-10104 A&CC			CLYTON MOORE	2	E-10104	0700-0700	HAYFORK
DOZ PVT E-10174 COTTON			MIKE STAHEL	2	E-10174	0700-0700	HAYFORK
DOZ						0700-0700	HAYFORK
W/T PVT E-10005 JOHNSON			DAVE LAMAR	1	E-10005	0700-1900	HAYFORK
W/T PVT E-10289 Act Fast			ANGELO CATTANEO	1	E-10289	0700-1900	HAYFORK
MAST						0700-0700	HAYFORK
HEQB						0700-0700	HAYFORK
HEQB						0700-0700	HAYFORK
FALM PVT NIGHT FIRE			ANDREW DUROCHER	1	O-10137	0700-1900	HAYFORK

6. Work Assignments:
 Construct control lines as direct as possible.
 Plan secondary control lines, begin if possible.
 Fall trees that will threaten control lines.
 Fall hazard trees.

7. Special Instructions:
 REAF Rudy Uribe, REAF Andrew Christie and ARCH William Kerwin will be working in CONTENGENCY SOUTH 2.

8. Communications

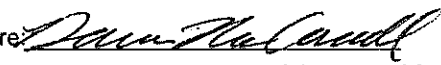
Name	Ch	Function	Rx Freq	Rx Tone	Tx Freq	Tx Tone	Notes
CDF C2	1	COMMAND	151.2650	103.5 (T8)	159.3300	151.4 (T14)	
CDF T28	8	TACTICAL	151.1825	192.8 (T16)	151.1825	192.8 (T16)	
CDF T25	14	AIR TO GROUND	159.2775	192.8 (T16)	159.2775	192.8 (T16)	A/G TACTICAL
CALCORD	15	MEDICAL	156.0750	156.7 (T6)	156.0750	156.7 (T6)	MEDICAL COORDINATION
GUARD 31	16	AIRGUARD	168.6250		168.6250	110.9 (T1)	EMERGENCY USE ONLY

9. Prepared by: Name: Dana McCarroll RESL Signature: *Dana McCarroll*

ICS 204 Date/Time: 9/1/2021 2200 Personnel Count: 9

ASSIGNMENT LIST (ICS 204 WF)

CONTROLLED UNCLASSIFIED
INFORMATION//BASIC

1. Incident Name: Monument South		2. Operational Period: Date From: 09/02/21 Date To: 09/03/21 Time From: 0700 Time To: 0700				3. Branch FSR		Division	
4. Operations Personnel:						Page 1 of 2			
Operations Section Chief: Andy Turner					Night Ops: Steven Ward				
Branch Director:					Branch Safety:				
Division/Group Supervisor: Jed Washburn 12HR					Air Attack:				
5. Resources Assigned:		** Resources Below in Bold are 12 Hour **							
Resource Identifier	ALS	LWD	Leader	Personnel	Request #	Hours	Reporting Location		
DOZ PVT E-10100 SIERRAVILLE			CHASE HAUBER	3	E-10100	0700-0700	HAYFORK STAGING		
DOZ PVT E-10112 DAVIS			LELAND DAVIS	1	E-10112	0700-1900	HAYFORK STAGING		
DOZ PVT E-10259 DIRECT			KEVIN FOX	2	E-10259	0700-0700	HAYFORK STAGING		
DOZ PVT 73 SHASTA			ROB STRIEFF	1	E-10305	0700-1900	HAYFORK STAGING		
DOZ PVT E-10438 PACKWAY			RICHARD HATHAWAY	3	E-10438	0700-0700	HAYFORK STAGING		
DOZ PVT E-10439 SCHREDER			CORY HALL	4	E-10439	0700-0700	HAYFORK STAGING		
DOZ PVT E-10440 SUNRISE			JOHN WILLIAMS	2	E-10440	0700-0700	HAYFORK STAGING		
W/T PVT E-10117 MCGARR			DENNIS MCGARR	1	E-10117	0700-1900	HAYFORK STAGING		
W/T PVT E-10124 IGRAM			RYAN GRABLE	1	E-10124	0700-1900	HAYFORK STAGING		
W/T PVT E-10128 ON SITE			RICK WALTON	1	E-10128	0700-1900	HAYFORK STAGING		
W/T PVT E-10281 CONCRETE			SCOTT HEAD	2	E-10281	0700-0700	HAYFORK STAGING		
W/T PVT E-10291 ZABEL			FRANK ZABEL	1	E-10291	0700-1900	HAYFORK STAGING		
W/T PVT E-10130 H2O			GARRETT MCINNIS	2	E-10130	0700-0700	HAYFORK STAGING		
W/T PVT E-10452 CSURE			RON LANDSBURG	2	E-10452	0700-1900	HAYFORK STAGING		
MAST PVT E-10155 BUNDYS			NICK BUNDY	1	E-10155	0700-1900	HAYFORK STAGING		
MAST PVT E-10356 RJW			WADE FIELDS	1	E-10356	0700-1900	HAYFORK STAGING		
MAST PVT E-10357 RJW			WADE FIELDS	1	E-10357	0700-1900	HAYFORK STAGING		
MAST PVT E-10368 JOHNS			VIRGIL JOHNS	1	E-10368	0700-1900	HAYFORK STAGING		
6. Work Assignments: Rehab dozerline. Repair crossings.									
7. Special Instructions:									
8. Communications									
Name	Ch	Function	Rx Freq	Rx Tone	Tx Freq	Tx Tone	Notes		
CDF C2	1	COMMAND	151.2650	103.5 (T8)	159.3300	151.4 (T14)			
CDF T15	9	TACTICAL	159.2700	192.8 (T16)	159.2700	192.8 (T16)			
CDF T25	14	AIR TO GROUND	159.2775	192.8 (T16)	159.2775	192.8 (T16)	AVG TACTICAL		
CALCORD	15	MEDICAL	156.0750	156.7 (T6)	156.0750	156.7 (T6)	MEDICAL COORDINATION		
GUARD 31	16	AIRGUARD	168.6250		168.6250	110.9 (T1)	EMERGENCY USE ONLY		
9. Prepared by: Name: Dana McCarroll RESL									
						Signature: 			
ICS 204		Date/Time: 9/1/2021 2200				Personnel Count: 30			

ASSIGNMENT LIST (ICS 204 WF)

CONTROLLED UNCLASSIFIED
INFORMATION//BASIC

1. Incident Name: <p style="text-align: center; font-weight: bold;">MONUMENT FIRE</p>		2. Operational Period: Date From: 09/02/21 Date To: 09/03/21 Time From: 0700 Time To: 0700				3. Branch Division <p style="text-align: center; font-weight: bold;">10 U</p>	
4. Operations Personnel: Operations Section Chief: Don Fregulia Branch Director: Kim Olson, Doug Cupp(T) Division/Group Supervisor: Jimmy Hidalgo		Night Ops: Corey Rose, Jesse Knox(T) Branch Safety: Air Attack:				Page 1 of 2 Uniform	
5. Resources Assigned:		** Resources Below in Bold are 12 Hour **					
Resource Identifier	ALS	LWD	Leader	Personnel	Request #	Hours	Reporting Location
HC1 LEWIS & CLARK IHC		9/9	NICK WYDRE	21	C-118	0700-1900	Weaverville Camp
HC2IA FIRESTORM 15A		9/4	BEN PAVAN	20	C-5	0700-1900	Weaverville Camp
HC2 PVT R&R CONTRACTING 99		9/5	ASUBENE AGUILERA	20	C-99	0700-1900	Weaverville Camp
WFM1 BLACK TOOTH WFM		9/11	CONNOR ERICKSON	10	O-830	0700-1900	Weaverville Camp
SMOD DENVER SUPPRESSION		9/13	KRIS MACDONALD	11	O-828	0700-1900	Weaverville Camp
ENG3 JUNCTION CITY 2531		9/4	JUSTIN KERWICK	3	E-44	0700-1900	Weaverville Camp
ENG3 PVT BLACK RANGE ENTERPRISES		9/20	TIMOTHY PEARSON	3	E-674	0700-1900	Weaverville Camp
ENG6 PVT BLAZE RUNNER 06		9/21	JOHN VINCENT	3	E-595	0700-1900	Weaverville Camp
DOZ2 PVT BUD GARMAN CONSTRUCTION		9/9	JEREMY SNEED	1	E-632	0700-1900	Weaverville Camp
DOZ3 PVT C M CONSTRUCTION		9/7	STEVEN EDSALL	2	E-481	0700-1900	Weaverville Camp
WTT1 ROCK CREEK		9/2	TIM DANIEL	2	E-80	0700-0700	Weaverville Camp
WTS2 FORTNER EXCAVATION 24		9/11	DANIEL JONES	1	E-24	0700-1900	Weaverville Camp
WTS2 GLENN'S TENS EQUIPMENT		9/11	ROBERT MESSNER	1	E-638	0700-1900	Weaverville Camp
WTS2 PVT K.K.'S WATER SERVICE		9/6	MIKE WOOD	1	E-688	0700-1900	Weaverville Camp
FALM PVT REDWOOD EMPIRE		9/6	JESSE GONZALEZ	2	O-86	0700-1900	Weaverville Camp
MAST PVT HIGH POWER ENTERPRISES		9/9	MARSHALL COX	2	E-486	0700-1900	Weaverville Camp
SKG2 LET-ER-BUCK 385		9/9	DAREN WARD	2	E-385	0700-1900	Weaverville Camp
PVT PUMPZILLA 2 TRINITY		9/8	JOHN VELEZ	2	S-21	0700-0700	Weaverville Camp
6. Work Assignments:							
<ul style="list-style-type: none"> - Keep the fire west of the North Fork of the Trinity River. - Continue prep on Hobo Gulch Road, Backbone Ridge Trail and contingency line between East Fork Road and Canyon Creek Road. - Maintain a presence on Highway 299 and Dutch Creek Road. - Support CAL FIRE Division DD with any needs. - Scout for indirect line control options east of the East Fork of the Trinity River. 							
7. Special Instructions:							
<ul style="list-style-type: none"> -Work with READS for approval when planning mechanical work inside of the Wilderness boundary. -Document work that is approved and complete within the wilderness boundary both on the map and with assigned READS. 							
8. Communications							
Name	Ch	Function	Rx Freq	Rx Tone	Tx Freq	Tx Tone	Notes
CMD 1	1	COMMAND	173.8125N	107.2	168.4750N	107.2	CMD Located on Weaver Baldy
TAC 6	6	TACTICAL	168.0500N	107.2	168.0500N	107.2	NIGHT DIVISION A
A/G CMD	12	A/G CMD	171.8625N		171.8625N		Incident A/G Command
CALCORD	15	MEDICAL	156.0750N	156.7	156.0750N	156.7	(TONE 6)
GUARD	16	AIRGUARD	168.6250N		168.6250N	110.9	EMERGENCY HAILING OF AIRCRAFT
9. Prepared by: Name:							
Ryan Resnick, Harry Kelmanson, Marisa Williams(T), Kelly Smyth(T) John Hunter (T)			RESL		Signature: _____		
ICS 204	Date/Time: 9/1/2021 2200					Personnel Count: 107	

ASSIGNMENT LIST (ICS 204 WF)

CONTROLLED UNCLASSIFIED
INFORMATION//BASIC

1. Incident Name: MONUMENT FIRE	2. Operational Period: Date From: 09/02/21 Date To: 09/03/21 Time From: 0700 Time To: 0700	3. Branch Division 40 W
--	---	--

4. Operations Personnel: Operations Section Chief: Don Fregulia Branch Director: Gary Monday Division/Group Supervisor: Tim Ritchey, Logan Ballesteros(T)	Night Ops: Corey Rose, Jesse Knox(T) Branch Safety: Air Attack:
--	--

5. Resources Assigned:	** Resources Below in Bold are 12 Hour **						
Resource Identifier	ALS	LWD	Leader	Personnel	Request #	Hours	Reporting Location
HC1 IDAHO CITY IHC		9/11	BRIAN CORDOZA	20	C-119	0700-1900	BAR 717
HC2 FRANCO REFORESTATION		9/8	ALBERTO FRANCO-QUEVDO	20	C-116	0700-1900	BAR 717
ENG3 CORTEZ FPD E23		9/11	BRAD FINCH	3	E-788	0700-1900	BAR 717
ENG6 ROCK SPRINGS E463		9/6	JASON CRISTANELLI	3	E-828	0700-1900	Weaverville Camp
ENG6 PVT PEANUT PIE		9/6	WADE VISSER	3	E-662	0700-1900	Weaverville Camp
ENG6 PVT TIMBER RIDGE FIRE LLC		9/8	JEFF TODD	3	E-664	0700-1900	BAR 717
ENG6 PVT ALTERGOTT FORESTRY		9/6	MARCIE MOORE	3	E-666	0700-1900	Weaverville Camp
ENG6 PVT LOOMIS FIRE		9/7	PAUL HUDDLESTON	3	E-669	0700-1900	Weaverville Camp
DOZ3 PVT ALVORD		9/7	MATT DAVIS	2	E-478	0700-1900	Weaverville Camp
DOZ3 PVT DIRT WORKS UNLIMITED		9/7	TIM PAULEY	1	E-480	0700-1900	BAR 717
WTS2 PVT CRAIG MARTIN		9/7	CRAIG MARTIN	1	E-636	0700-1900	BAR 717
FALM PVT CHARLIE FALLERS		9/9	TACOMA MANUEL	2	O-785	0700-1900	Weaverville Camp
TFLD HYATT		9/6	TODD HYATT	1	O-653	0700-1900	Weaverville Camp
EMPF RAYMOND		9/11	JENNIFER RAYMOND	1	O-850.1	0700-1900	BAR 717
EMTF ISON		9/11	TY ISON	1	O-850.2	0700-1900	BAR 717
SOFR KEOGH		9/7	RYAN KEOGH	1	O-418.64	0700-1900	Weaverville Camp

6. Work Assignments:

- Monitor fires edge and keep fire north of Hyampom Road.
- Continue to prepare Hyampom Road from Little Creek to Bar 717 to hold fire north of Hyampom Road.
- Identify check lines to be constructed for potential future firing operations along and north of Hyampom Road.

7. Special Instructions:

8. Communications							
Name	Ch	Function	Rx Freq	Rx Tone	Tx Freq	Tx Tone	Notes
CMD 2	2	COMMAND	171.5375N	107.2	164.8625N	107.2	CMD located On Hayfork Bally
TAC 8	8	TACTICAL	166.7250N	107.2	166.7250N	107.2	NIGHT DIVISION J
A/G CMD	12	A/G CMD	171.8625N		171.8625N		Incident A/G Command
CALCORD	15	MEDICAL	156.0750N	156.7	156.0750N	156.7	(TONE 6)
GUARD	16	AIRGUARD	168.6250N		168.6250N	110.9	EMERGENCY HAILING OF AIRCRAFT

9. Prepared by: Name: Ryan Resnick, Harry Kelmanson, Marisa Williams(T), Kelly Smyth(T) John Hunter (T) RESL

Signature: _____

ICS 204 Date/Time: 9/1/2021 2200 Personnel Count: 68

ASSIGNMENT LIST (ICS 204 WF)

CONTROLLED UNCLASSIFIED
INFORMATION//BASIC

1. Incident Name: <p style="text-align: center;">MONUMENT FIRE</p>	2. Operational Period: Date From: 09/02/21 Date To: 09/03/21 Time From: 0700 Time To: 0700	3. Branch Division <p style="text-align: center;">40 Z</p>
---	---	--

4. Operations Personnel: Page 1 of 2 Zulu

Operations Section Chief: Don Fregulia Branch Director: Gary Monday Division/Group Supervisor: Dennis Wilson, Danny Kamakani(T)	Night Ops: Corey Rose, Jesse Knox(T) Branch Safety: Air Attack:
--	--

5. Resources Assigned:		** Resources Below in Bold are 12 Hour **					
Resource Identifier	ALS	LWD	Leader	Personnel	Request #	Hours	Reporting Location
HC1 TRINITY IHC		9/2	TRISTAN DIAS	20	C-113	0700-1900	Weaverville
HC2IA BITTERROOT IHC *SWING*		9/12	TERESA NORTH	21	C-121	1000-0200	Weaverville
HC2IA PVT ASI ARDEN SOLUTIONS		9/4	JEFF HARRISON	20	C-96	0700-1900	Weaverville
WFM1 HELLS CANYON *SWING*		9/4	BRIAN BATES	9	O-894	1000-0200	Weaverville
DOZ2 PVT SPRATT 436		9/2	ERIC SPRATT	2	E-436	0700-1900	Weaverville
DOZ2 PVT RITTBERGER TRUCKING 801		9/13	KLINTON BITTBERGER	2	E-801	0700-1900	Weaverville
DOZ3 PVT BRAD INGRAM CONST 168		9/12	MIKE UNDERHILL	2	E-168	0700-1900	Weaverville
DOZ3 PVT LONESTAR ENTERPRISES 475		9/2	COREY SUPACK	2	E-475	0700-1900	Weaverville
DOZ3 PVT GREENWOOD 479		9/9	JAY GREENWOOD	2	E-479	0700-1900	Weaverville
WTS1 PVT NORTHSTATE 72		9/4	BOB GETZ	1	E-72	0700-1900	Weaverville
WTS2 PVT CATTLE LACK RANCH 21		9/11	JAMES GOLDIE	2	E-21	0700-0700	Weaverville
WTS2 PVT FORTNER EXCAVATION 23		9/11	BOB FORTNER	1	E-23	0700-1900	Weaverville
WTS2 PVT GLENN'S TENS 637		9/11	GLENN LAQUAGLIA	1	E-637	0700-1900	Weaverville
WTS2 PVT JOHN RYAN 640		9/13	BUD MARTIN	1	E-640	0700-1900	Weaverville
SKG1 PVT SOFT TRACK ATTACK 50		9/8	JESSE STARK	1	E-50	0700-0700	Weaverville
SKG1 PVT SPENCER LOGGING 807		9/6	JAKE SPENCER	2	E-807	0700-1900	Weaverville
SKG2 PVT PITMAN RESOURCES 760		9/11	BLAZE WALTER	2	E-760	0700-1900	Weaverville
SKG2 PVT BULL CREEK FORESTRY 761		9/10	TYLEN DIAL	2	E-761	0700-1900	Weaverville

6. Work Assignments:

- Mop-up and secure fires edge on Pattison Ridge.
- Grid and patrol for spots on green side of Pattison Ridge.
- Monitor fires edge on Pattison Ridge to recommend need for firing operations to maintain pace with main fire east of West Fork and Miners Creek.
- Continue to prep Pattison Ridge south towards Hyampom Road.

7. Special Instructions:

8. Communications							
Name	Ch	Function	Rx Freq	Rx Tone	Tx Freq	Tx Tone	Notes
CMD 2	2	COMMAND	171.5375N	107.2	164.8625N	107.2	CMD located On Hayfork Bally
TAC 10	10	TACTICAL	168.2500N	107.2	168.2500N	107.2	NIGHT DIVISION W/Z
A/G CMD	12	A/G CMD	171.8625N		171.8625N		Incident A/G Command
CALCORD	15	MEDICAL	156.0750N	156.7	156.0750N	156.7	(TONE 6)
GUARD	16	AIRGUARD	168.6250N		168.6250N	110.9	EMERGENCY HAILING OF AIRCRAFT

9. Prepared by: Name: Ryan Resnick, Harry Kelmanson, Marisa Williams(T), Kelly Smyth(T), John Hunter (T) RESL Signature: _____

ICS 204 Date/Time: 9/1/2021 2200 Personnel Count: 93

ASSIGNMENT LIST (ICS 204 WF)

CONTROLLED UNCLASSIFIED
INFORMATION//BASIC

1. Incident Name: <p style="text-align: center; font-weight: bold;">MONUMENT FIRE</p>	2. Operational Period: Date From: 09/02/21 Date To: 09/03/21 Time From: 0700 Time To: 0700	3. Branch Division <p style="text-align: center; font-weight: bold;">40 NORTH CONTINGENCY</p>
4. Operations Personnel:		Page 1 of 2

Operations Section Chief: Don Fregulia Branch Director: Gary Monday Division/Group Supervisor: Anthony Zavalla	Night Ops: Corey Rose, Jesse Knox(T) Branch Safety: Air Attack:
---	--

5. Resources Assigned:	** Resources Below in Bold are 12 Hour **						
Resource Identifier	ALS	LWD	Leader	Personnel	Request #	Hours	Reporting Location
HC2 PVT J FRANCO REFORESTATION 105		9/5	ESEQUIAL TAPIA	20	C-105	0700-1900	Weaverville Camp
ENG3 8333		9/6	VICTOR PRECIADO	5	E-618	0700-1900	Bar 717
ENG6 KENTUCKY 555		9/16	TIM COWELL	4	E-555	0700-1900	Bar 717
ENG6 PVT GCT E5		9/5	JASON CAMPBELL	3	E-648	0700-1900	Bar 717
ENG6 PVT CLEARWATER FIRE 62		9/6	BRIAN TERRY	3	E-661	0700-1900	Bar 717
DOZ2 PVT BENS TRUCK & EQUIPMENT 13		9/6	BILL SCARBROUGH	2	E-13	0700-1900	Weaverville Camp
DOZ2 PVT NORTHSTATE 14		8/12	WADE FLORY	1	E-14	0700-1900	Weaverville Camp
DOZ2 PVT BUD GARMAN CONSTRUCTION 25		9/6	BEDA GARMAN	2	E-25	0700-1900	Weaverville Camp
DOZ2 PVT R. BROWN CONSTRUCTION 171		9/15	DENNIS FULLERTON	2	E-171	0700-1900	Weaverville Camp
DOZ3 PVT LET-ER-BUCK 477		9/10	DON ANDREWS	2	E-477	0700-1900	Weaverville Camp
DOZ3 PVT BRATCHER SERVICES 482		9/7	RON DARBY	2	E-482	0700-1900	Weaverville Camp
WTT2 CA-TNF 31		9/9	DANNY RASMUSSEN	2	E-769	0700-1900	Weaverville Camp
WTS3 PVT PJ&R 641		9/11	PAUL YOKOYAMA	1	E-641	0700-1900	Weaverville Camp
FALM PVT TIMBERWOLF 83		9/4	ROCKY SULLIVAN	1	O-83	0700-1900	Weaverville Camp
MAST PVT KIT CONTRACTING 31		9/13	IKE TOMLINSON	2	E-31	0700-1900	Weaverville Camp
MAST PVT EVANS RIGHT OF 32		9/3	TEO GONZALEZ	1	E-32	0700-1900	Weaverville Camp
MAST PVT EVANS RIGHT OF 34		9/13	MIKE EVANS	2	E-34	0700-1900	Weaverville Camp
MAST PVT CUTTING EDGE 428		9/4	SERGIO RENTERIA	2	E-428	0700-1900	Weaverville Camp

6. Work Assignments:
 - Continue contingency lines south of Hyampon Road from Creek Road to Bar 717.

7. Special Instructions:

8. Communications

Name	Ch	Function	Rx Freq	Rx Tone	Tx Freq	Tx Tone	Notes
CMD 1	1	COMMAND	173.8125N	107.2	168.4750N	107.2	CMD Located on Weaver Baily
CMD 5	5	COMMAND	173.6500N	107.2	164.8125N	107.2	CMD Located on Ironside Lookout
TAC 11	11	TACTICAL	168.2375N	107.2	168.2375N	107.2	
A/G CMD	12	A/G CMD	171.8625N		171.8625N		Incident A/G Command
CALCORD	15	MEDICAL	156.0750N	156.7	156.0750N	156.7	(TONE 6)
GUARD	16	AIRGUARD	168.6250N		168.6250N	110.9	EMERGENCY HAILING OF AIRCRAFT

9. Prepared by: Name: Ryan Resnick, Harry Kelmanson, Marisa Williams(T), Kelly Smyth(T), John Hunter (T) RESL Signature: _____

ICS 204 Date/Time: 9/1/2021 2200 Personnel Count: 57

ASSIGNMENT LIST (ICS 204 WF)

CONTROLLED UNCLASSIFIED
INFORMATION/BASIC

1. Incident Name: MONUMENT FIRE	2. Operational Period: Date From: 09/02/21 Date To: 09/03/21 Time From: 0700 Time To: 0700	3. Branch Division NIGHT WIZ (Monument)
--	---	---

4. Operations Personnel: Operations Section Chief: Don Fregulia Branch Director: Division/Group Supervisor: Cheveyo Munk, Julie Podony(T)	Night Ops: Corey Rose, Jesse Knox(T) Branch Safety: Tom Nash Air Attack:
---	--

5. Resources Assigned:	** Resources Below in Bold are 12 Hour **							
Resource Identifier	ALS	LWD	Leader	Personnel	Request #	Hours	Reporting Location	
HC1 LOLO IHC		9/9	SHAWN FAELLA	22	C-108	1900-0700	Weaverville Camp	
HC2 PVT TRI-CITIES FORESTRY		9/11	JOSE SILVA	20	C-125	1900-0700	Weaverville Camp	
ENG3 SACRAMENTO DISTRICT		9/3	HUGO ERHEWAYN	4	E-673	1900-0700	Weaverville Camp	
ENG3 AZ 303		9/4	JIMMY NIESEN	4	E-789	1900-0700	Weaverville Camp	
ENG6 E607		9/11	DOUG LESH	6	E-793	1900-0700	Weaverville Camp	
ENG6 STONEWALL FPD E610		9/11	KEVIN YEATTS	3	E-795	1900-0700	Weaverville Camp	
ENG6 BITTERROOT E641		9/12	RUSSELL BUZZELL	6	E-10537	1900-0700	Weaverville Camp	
ENG6 PVT WOODPECKER		9/11	ED FAULKNER	3	E-787	1900-0700	Weaverville Camp	
DOZ2 PVT BROWN		9/7	BARRY BROWN	2	E-484	1900-0700	Weaverville Camp	
DOZ2 PVT ROWBERRY		9/6	JIM VARWIG	2	E-629	1900-0700	Weaverville Camp	
WTT1 ROCK CREEK		9/2	TIM DANIEL	2	E-80	0700-0700	Weaverville Camp	
WTS2 PVT CATTLE LACK RANCH 21		9/11	JAMES GOLDIE	2	E-21	0700-0700	Weaverville Camp	
WTS2 PVT CATTLE LACK RANCH 22		9/8	CLANCY ENLOW	1	E-22	1900-0700	Weaverville Camp	
WTS2 PVT LUKE BURNHAM 768		9/12	LUKE BURNHAM	1	E-768	0700-1900	Weaverville Camp	
SKG1 PVT SOFT TRACK ATTACK 50		9/8	JESSE STARK	1	E-50	0700-0700	Weaverville Camp	
SKG2 RIM ROCK EQUIP.		9/8	ROBERT TOBIASON	2	E-770	1900-0700	Weaverville Camp	
PVT PUMPZILLA 2 TRINITY		9/8	JOHN VELEZ	2	S-21	0700-0700	Weaverville Camp	
TFLD JACKSON		9/3	ERIC JACKSON	1	E-673.1	1900-0700	Weaverville Camp	

6. Work Assignments:
 - Mop up to the extent necessary to maintain containment.
 - Provide structure defense and point protection as needed.

7. Special Instructions:

8. Communications							
Name	Ch	Function	Rx Freq	Rx Tone	Tx Freq	Tx Tone	Notes
CMD 2	2	COMMAND	171.5375N	107.2	164.8625N	107.2	CMD located On Hayfork Bally
TAC 10	10	TACTICAL	168.2500N	107.2	168.2500N	107.2	NIGHT DIVISION W/Z
A/G CMD	12	A/G CMD	171.8625N		171.8625N		Incident A/G Command
CALCORD	15	MEDICAL	156.0750N	156.7	156.0750N	156.7	(TONE 6)
GUARD	16	AIRGUARD	168.6250N		168.6250N	110.9	EMERGENCY HAILING OF AIRCRAFT

9. Prepared by: Name: Ryan Resnick, Harry Kelmanson, Marisa Williams(T), Kelly Smyth(T), John Hunter (T) RESL Signature: _____

ICS 204 Date/Time: 9/1/2021 2200 Personnel Count: 84

AIR OPERATIONS SUMMARY ICS-220

Incident Name and Incident Number
 NORTH AND SOUTH ZONES/ Monument SHF 001187 Sunrise **639** Startup **709** Cutoff **1907** Sunset **1937**

General Remarks, Safety Notes, Hazards, Air Operations Special Equipment, etc.
 TRACK ALL DIPSITE LOCATIONS / NUMBER OF DIPS / GALLONS TAKEN.
 TRACK ALL DROP LOCATIONS / NUMBER OF DROPS / GALLONS DROPPED
 ALL GPS DATA TO BE COLLECTED IN DEGREES, MINUTES, DECIMAL MINUTES, FORMAT.
*AVOID Aerial Application of Retardant / Foam / Agent within 300' of Waterways, Bodies of Water, etc.
 If Retardant / Foam / Agent is Dropped Within These Areas Immediately Notify the AOBDS and Provide the Following Information:
 Lat / Long, Estimated Number of Gallons and a Map Delineating The Area.*

Address to MRB is - 1 Wizard way Hayfork CA 96041

Time Prepared
 1800
 Shutdown
 2007
 Willow Creek
 40 56.570 123 38.055
 Sky Ranch
 40 30.077 122 22.855
 Hayfork MRB
 40 32.787 123 12.075

Date Prepared
 Wednesday, September 1, 2021
 Operational Period - Date
 Thursday, September 2, 2021

Request # A-307
Radius: Polygon NM
Altitude: 11500' MSL
Centerpoint: Lat Long
 NOTAMS: 1/9486
 Frequency 126.2750
<http://efr.faa.gov/efr2/list.html>

Prepared By
 Niko Matteoli

Operational Period - Time
 0700-0700

Rescue Ship Information
 Name _____ Day _____
 Phone _____ G822 _____
 Make/Model _____ UH60 _____
 Location _____ Redding _____
 Request Procedure for These Aircraft: _____
 Through Incident Communications _____
 See Medical Plan For Additional Info _____

SOUTH-(SOUTH COMMUNICATIONS)

Frequencies	RX	Tone	TX	AM / FM
AIR TACTICS	169.4875		169.4875	FM
AIR / AIR TFR	126.2750		126.2750	AM
SOUTH COMMAND CDF C2	151.2650	103.5 (8)	151.4 (14)	FM
SOUTH CMD CDF C11 DIV RR	151.1675	103.5 (8)	151.4 (14)	FM
SOUTH ROTOR VICTOR	128.7750		128.7750	AM
SOUTH ROTOR BRIEFING	134.1750		134.1750	AM
South A/G- Command CDF T13	151.3775	192.8 (16)	192.8 (16)	FM
South A/G - Tactical CDF T25	159.2775	192.8 (16)	192.8 (16)	FM
TOLC (Sky Ranch)	170.7625	151.4 (14)	170.7625	FM
DECK (Sky Ranch)	163.1000		163.1000	FM
CALCORD - MEDICAL	156.0750	156.7 (6)	156.7 (6)	FM
ARD - Emergency Only	168.6250		168.6250	FM

NORTH ZONE-(NORTH COMMUNICATIONS)

Frequencies	RX	Tone	TX	AM / FM
AIR TACTICS	169.7250		169.7250	FM
AIR / AIR TFR	126.2750		126.2750	AM
NORTH COMMAND	173.8125	107.2 (10)	168.4750	FM
NORTH ROTOR VICTOR	123.7750		123.7750	AM
North A/G - Command	171.8625		171.8625	FM
North A/G - Tactical	171.0375		171.0375	FM
DECK (Willow Creek)	168.3500		168.3500	FM
CALCORD - MEDICAL	156.0750	156.7 (6)	156.7 (6)	FM
AIRGUARD - Emergency Only	168.6250		168.6250	FM

South Zone Helibase

FAA #	Type	Make/Model	Helibase	Avail	Start	Remarks
1CK	I	BV 107 II	Sky Ranch	800	830	A-10015
5CK	I	UH-60	Sky Ranch	800	830	A-10016
4CK	I	UH-60	Sky Ranch	800	830	A-10000
7FH	I	UH-60	Sky Ranch	800	830	A-10001
3TW	I	UH-60	Sky Ranch	800	830	A-10002
9CH	I	BV 107 II	Sky Ranch	800	830	A-10003
0FG	II	UH-1H	Sky Ranch	800	830	A-10017
68U	II	S58T	Sky Ranch	800	830	A-10009
3CS	II	UH-1H	Sky Ranch	800	830	A-10008
6LH	II	B-212	Sky Ranch	800	830	A-10010
7TK	III	B-407	Sky Ranch	800	830	A-10035
2BH	III	BH206L+	Sky Ranch	800	830	A-10029
9TA	III	ASS50B3	Sky Ranch	800	830	A-10014

North Zone Helibase

FAA #	Type	Make/Model	Helibase	Avail	Start	Remarks
1CK	I	S61	Willow	800	830	A-11
5TH	I	KMAX	Willow	800	830	A-10
8AC	I	S64F	Willow	800	830	A-34
520	II	B-205	Willow	800	830	A-68
3HT	II	B-205	Willow	800	830	A-97
503	III	B-407	Willow	800	830	A-152

South Zone

Position	Name	Phone	Trainee	Phone
AOBD	Niko Matteoli	(704) 488-2460		
AOBD (D)	Josh Faulkner	(530) 356-1351		
ASGS	Kosy Hill	(530) 917-1438		
HEBM	Gary Engen	(707) 299-7699		
HLCO	Rudy Ynigues	(530) 515-4440		
HLCO	Chris Wilson	(530) 448-2408		

North Zone

Position	Name	Phone	Trainee	Phone
AOBD	John Keesee	(805) 551-6422		
ASGS	JR Sullivan	(210) 396-3304		
HEBM	JR Sullivan	(210) 396-3304		
ATGS	Justin Regline	(530) 630-1734		
ATGS	Jay Waller	(263) 696-8530		
HLCO	Casey Jones	(559) 696-3878		

1. Incident Name: Monument South Incident Channels

2. Date/Time Prepared: Date: 09/01/2021 Time: 1930

3. Operational Period: Date From: 09/02/21 Date To: 09/03/21 Time From: 0700 Time To: 0700

Ch#	Function	Name	Assigned To	Rx Freq	Rx Tone	Tx Freq	Tx Tone	Notes
1	COMMAND	CDF C2	ALL DIVS	151.2650	103.5 (T8)	159.3300	151.4 (T14)	
2	COMMAND	CDF C11 (T14)	BRANCH 30	151.1675	103.5 (T8)	159.3975	151.4 (T14)	TO BE USED IN BRANCH 30 ONLY
3	COMMAND	CDF C11 (T11)	DIV RR	151.1675	103.5 (T8)	159.3975	114.8 (T11)	FOR RR ONLY
4	TACTICAL	VFIRE 23	DIV DD / HH	154.2950	156.7 (T6)	154.2950	156.7 (T6)	
5	TACTICAL	VFIRE 24	DIV NN	154.2725	156.7 (T6)	154.2725	156.7 (T6)	
6	TACTICAL	CDF T26	DIV RR	159.2925	192.8 (T16)	159.2925	192.8 (T16)	
7	TACTICAL	CDF T27	SOUTH CONT 1	159.3075	192.8 (T16)	159.3075	192.8 (T16)	
8	TACTICAL	CDF T28	SOUTH CONT 2	151.1825	192.8 (T16)	151.1825	192.8 (T16)	
9	TACTICAL	CDF T15	DIV FSR	159.2700	192.8 (T16)	159.2700	192.8 (T16)	
10	TACTICAL	CDF T23	MONUMENT FUELS	159.4500	192.8 (T16)	159.4500	192.8 (T16)	TRAVEL NET FOR MONUMENT FUELS
11								
12								
13	TACTICAL	CDF T13	ALL DIVS	151.3775	192.8 (T16)	151.3775	192.8 (T16)	A/G COMMAND
14	AIR TO GROUND	CDF T25	ALL DIVS	159.2775	192.8 (T16)	159.2775	192.8 (T16)	A/G TACTICAL
15	MEDICAL	CALCORD	ALL DIVS	156.0750	156.7 (T6)	156.0750	156.7 (T6)	MEDICAL COORDINATION
16	AIRGUARD	GUARD 31	ALL DIVS	168.6250		168.6250	110.9 (T1)	EMERGENCY USE ONLY
17								
18								
19								
20	AIRGUARD	GUARD 31	ALL DIVS	168.6250		168.6250	110.9 (T1)	EMERGENCY USE ONLY

5. Special Instructions

TO CONFIRM YOU HAVE THE MOST CURRENT CLONE, ENSURE YOUR DISPLAY OF CHANNEL 16 OR 20 MATCHES CHANNEL 16 OR 20 OF THE 205 - HEIGHT AND POWER ARE KEY WHEN USING RADIOS; BE AT A HIGH POINT, USE A MOBILE IF POSSIBLE, AND USE RADIO RELAYS WHEN NEEDED

6. Prepared by (Communications Unit Leader): Name: Chris Johns

Signature: 

NIMS IAP Date/Time: 09/01/21 1930

ICS 205 - CONTROLLED UNCLASSIFIED INFORMATION/BASIC

**INCIDENT RADIO COMMUNICATIONS
PLAN ICS 205**

Incident Name		Date/Time Prepared		Operational Period Date/Time				
Monument North Fire		9/1/21 @ 1830		Day-Night 9/2/21 0700 - 9/3/21 0700				
4. BASIC RADIO CHANNEL UTILIZATION								
Ch #	Channel Name	Assignment	RX Frequency Narrowband (N) Wideband (W)	RX Tone/NAC	TX Frequency Narrowband (N) Wideband (W)	TX Tone/NAC	Mode Digital (D) Analog (A) Mixed (M)	Remarks
1	CMD 1	ALL DIVISIONS	173.8125	N 107.2	168.4750	N 107.2	A	CMD Located on Weaver Bally
2	CMD 2	ALL DIVISIONS	171.5375	N 107.2	164.8625	N 107.2	A	CMD located On Hayfork Bally
3	CMD 3	ALL DIVISIONS	171.0875	N 107.2	164.6000	N 107.2	A	CMD Located on Bully Choop
4	CMD 4	ALL DIVISIONS	173.5000	N 107.2	165.8125	N 107.2	A	CMD Located on Brush Mt.
5	CMD 5	ALL DIVISIONS	173.6500	N 107.2	164.8125	N 107.2	A	CMD Located on Ironside Lookout
6	TAC 6	DIV A, DIV U	168.0500	N 107.2	168.0500	N 107.2	A	NIGHT DIVISION A
7	TAC 7	DIV E,	168.6000	N 107.2	168.6000	N 107.2	A	NIGHT DIVISION E
8	TAC 8	DIV J, DIV W	166.7250	N 107.2	166.7250	N 107.2	A	NIGHT DIVISION J
9	TAC 9	DIV K, DIV L	166.7750	N 107.2	166.7750	N 107.2	A	NIGHT DIVISION K
10	TAC 10	DIV Z	168.2500	N 107.2	168.2500	N 107.2	A	NIGHT DIVISION WIZ
11	TAC 11	NORTH CONTINGENCY	168.2375	N 107.2	168.2375	N 107.2	A	
12	A/G CMD	A/G CMD	171.8625	N	171.8625	N	A	Incident Air to Ground Command
13	A/G TAC	ALL DIVISIONS	171.0375	N	171.0375	N	A	Incident Air to Ground Tactical
14	IA-CMD	IA-CMD	171.5750	N	165.0125	N	A	Shasta Forest Repeater
15	CALCORD	MEDICAL COORDINATION	156.0750	N 156.7	156.0750	N 156.7	A	MEDEVAC Coordination (Tone 6)
16	GUARD	GUARD	168.6250	N	168.6250	N	A	EMERGENCY HAILING OF AIRCRAFT
Special Instructions								
This group is tone locked and tone protected with Tone 10 (107.2) on the receive and transmit sides due to exceptional fire activity and shared tactical frequency use in the immediate vicinity. You must tone protect both sides of the frequencies.								
Communications Trailer phone number: (925) 817-9955								
I-205 Prepared By		Kevin Throop - COML		USE HUMAN REPEATERS WHEN NEEDED.				

INCIDENT RADIO COMMUNICATIONS PLAN ICS 205

Incident Name		Date/Time Prepared		Operational Period Date/Time					
Monument North IA		8/3/121 @ 1830		Day-Night 9/1/21 0700 - 9/2/21 0700					
4. BASIC RADIO CHANNEL UTILIZATION									
Ch #	Channel Name	Assignment	RX Frequency Narrowband (N) Wideband (W)	RX Tone/NAC	TX Frequency Narrowband (N) Wideband (W)	TX Tone/NAC	Mode Digital (D) Analog (A) Mixed (M)	Remarks	
1	COMMAND	SFR-R	171.5750	N	165.0125	N	OST	A	Shasta Forest Repeater (Tone 4,5,6,9)
2	COMMAND	SFR-R	171.5000	N	164.8250	N	OST	A	Shasta Service Net (Tone 4,6)
3	COMMAND	SHU-L	151.1600	N	159.2700	N	OST	A	CALFIRE Shasta Command (Tone 3,7)
4	COMMAND	SFR-R	172.8750	N	164.1750	N	OST	A	Six Rivers Forest Repeater (Tone 5,6)
5	TACTICAL	NIFC T2	168.2000	N	168.2000	N		A	I/A Tactical
6	TACTICAL	RS TAC 4	166.5500	N	166.5500	N		A	I/A Tactical
7	TACTICAL	RS TAC 5	167.1125	N	167.1125	N		A	I/A Tactical
8	TACTICAL	CDF T11	151.4450	N	151.4450	N	192.8	A	I/A Tactical (Tone 16)
9	LOCAL GOV RPT	XTR-R	154.7850	N	158.7600	N		A	Trinity County Command (Tone 10,13)
10	MONUMENT CMD	MON CM2	171.5375	N	107.2	N	107.2	A	Monument Command Hayfork Bally (Tone 10)
11	MONUMENT CMD	MON CM4	173.5000	N	107.2	N	107.2	A	Monument North Command Brush Mountain (Tone 10)
12	MONUMENT AIR TO GROUND	AG TAC	171.0375	N	171.0375	N		A	Monument North A/G Brush Mountain
13	AIR TO GROUND SECONDARY	AG08 SEC	166.8750	N	166.8750	N		A	IA A/G Secondary
14	AIR TO GROUND PRIMARY	AG43 PRI	167.6000	N	167.6000	N		A	IA A/G Primary
15	CALCORD	CALCORD	156.0750	N	156.0750	N	156.7	A	MEDEVAC Coordination (Tone 6)
16	GUARD	GUARD	168.6250	N	168.6250	N	110.9	A	Emergency (Tone 1)
Special Instructions									
IMPORTANT This IA group is tone selectable. Older legacy radios (DPH/GPH) will need to select the proper tone for each channel as it is selected, including Guard and Calcord. Due to how the tone list is programmed into the legacy radios, they should only be cloned by like radios that were cloned by Communications. Tones for the Command channels are recommendations.									
i-205 Prepared By		Kevin Throop COML				USE HUMAN REPEATERS WHEN NEEDED.			

MEDICAL PLAN ICS 206	1. INCIDENT NAME MONUMENT	2. DATE PREPARED 09/01/2021	3. TIME PREPARED 1800	4. OPERATIONAL PERIOD 09/02-09/03, 0700-0700
---------------------------------------	-------------------------------------	---------------------------------------	---------------------------------	--

5. INCIDENT MEDICAL AID STATIONS

MEDICAL SUPPLY STATIONS	LOCATION	PARAMEDICS	
		YES	NO
CAL MAT	ANDERSON BASE CAMP	MD	
MERT	TRINITY RIVER CAMP	PA	

6. TRANSPORTATION

A. AMBULANCE SERVICES

NAME	LOCATION	PHONE	PARAMEDICS	
			YES	NO
AMBULANCE 104	BRANCH 30	CMD CHANNEL	X	
REMS 5 (UTV)	BRANCH 30 DIV RR	CMD CHANNEL	X	

B. AIR AMBULANCES

NAME	LOCATION	PARAMEDICS	
		YES	NO
CALIFORNIA GUARD 822 (24 HOUR HOIST)	Redding Airport --Contact CMD--	X	

7. HOSPITALS

NAME	ADDRESS	TRAVEL TIME		PHONE Frequency	CNG 822	HELIPAD		BURN CENTER	
		ATR	GRD			YES	NO	YES	NO
SHASTA REG MED CTR TRAUMA LVL 3	1100 BUTTE ST, REDDING 40' 35.10'N, -122' 23.28'W	15 Min	60 Min	(530) 244-5353 468.025 Tx, 468.025 Rx		X			X
MERCY MED CTR TRAUMA LVL 2	2175 ROSALINE AVE, REDDING 40' 34.332'N, -122' 23.796'W	15 Min	60 Min	(530) 225-7201 468.075 Tx, 463.000 Rx	X	X			X
UC DAVIS TRAUMA LVL 1	2315 STOCKTON BLVD, SACRAMENTO 38' 33.360'N, -121' 27.330'W	1.25 Hour	4 Hour	(916) 734-2011 446.525 Tx, 203.5 Rx	X	X		X	
TRINITY HOSPITAL WEAVERVILLE	60 EASTER AVENUE, WEAVERVILLE 40' 44.275'N, -122' 56.359'W	10 Min	30 Min	(530) 623-5541 x1		X			X

8. MEDICAL EMERGENCY PROCEDURES

EMERGENCY FREQUENCY:
"LINE EMERGENCY"

The Crew Supervisor will contact the Division Supervisor with patient complaint/condition, location and resource needs.

- Division/Group Supervisor contacts:
 1. Closest EMS resource
 2. Communications Unit
- Communications Unit contacts:
 1. Ground or Air ambulance as requested
 2. Operations
 3. Safety
 4. Medical Unit
- Division Supervisor or designee will serve as point of contact and run medical emergencies on the assigned channel.
 1. A pre-assigned **COMMAND** frequency and **CALCORD** should be used for **IWI** and only for duration of need.
- Communications Unit will clear the command channel for emergency traffic as needed and only for the duration of need.

CAMP EMERGENCY:

Contact the Medical Unit with a patient complaint/condition and location. Medical Staff will respond to stabilize incident:

- Medical Unit contacts:

1. Communications	4. Operations
2. Safety	5. Crew Supervisor
3. Logistics	6. Comps/Claims

INJURY REPORTING PROCEDURES

CHIEF COMPLAINT _____
 LOCATION OF PATIENT _____
 POINT OF CONTACT _____
 TRANSPORTATION REQUESTED BY: AIR ___ GROUND ___
 POINT OF PICKUP _____
 LAT _____ LONG _____
 PATIENT UNIT ID _____
 IS AN EMT/P WITH PATIENT: YES ___ NO ___
 AGE _____
 SEX: MALE ___ FEMALE ___

**ALL EMERGENCIES---Secure the area
and identify witnesses for later investigation.
Keep an accurate log of events.**

EMERGENCY
916-883-0934

CS 206	9. PREPARED BY: (Medical Unit Leader) JOSH STALEY-(MEDL)	10. REVIEWED BY: (Safety Officer) TIM IRWIN-(SOFR)
---------------	--	--

\$ FINANCE MESSAGE \$

****Please No Off Site Feeding Unless Approved by the Finance Section Chief.****

CAL FIRE PERSONNEL

Make sure to create a paper FC-33 so we can update.
If anyone has any CalCard travel receipts and meal/lodging sign in sheets, please get a copy to Finance.

LOCAL GOVERNMENT RESOURCES

Make sure you check in with TIME Unit for ABH or F-42 Paperwork.

ALL HIRED EQUIPMENT

Make sure you get your shift ticket filled out by your **Division Group Supervisor or Supervisor.**

ALL SUPERVISORS OF HIRED EQUIPMENT

Shift Tickets for hired equipment need to be signed and turned in to TIME daily. Ensure the shift ticket is filled out completely (including evaluation), accurately and legibly. **Example included in IAP.**

PROPERTY DAMAGE or INJURIES

Please report any property damage caused by suppression activities and/or injuries to the Comp/Claims Unit.

**MONUMENT FIRE
Federal Finance Process
CA-SHF-001187**

For resources hired out of state and have VIPR agreement scan QR code

IMPORTANT INFORMATION: If you are a Monument North Resource, i.e., you have a RO # four digits or less (E-489), and you are 'loaned' to the South Zone, please note **SOUTH ZONE** or **Monument South Zone** on your Shift Ticket / CTR.

Please send all documents to 2021.monument.finance@firenet.gov for all resources.

Email Subject Line: TIME/Resource Order No./ Resource Name/Position Code – Put TIME, CTR, SHIFT TICKET in the subject line with your information

(Example: TIME/O-200/SBear/Safety)

Email all documents that pertain to your assignment:

Agency Overhead	Agency ADs / EFFs	VIPR Resources	Contract / Agency Crews	Cooperators
Resource Order	Resource Order	Resource Order	Resource Order	Resource Order
Shift Tickets	Casual Hire Form	VIPR Agreement	Manifest	Agreement
	Shift Tickets	Schedule of Items	Agreement / Contract	Shift Tickets / CTRs
		Inspections	Schedule of Items	
		Shift Tickets	Inspections	
			Crew Time Reports	

Submit Equipment Shift Tickets or Crew Time Reports (CTRs) daily to 2021.monument.finance@firenet.gov

Please include your email address and phone number in the body of the email when sending your documents.

Any questions, please call: FINANCE – Teresa Fork - FSC1
530-941-4226

Janice Brown - TIME
503-524-2699

COMP / CLAIMS

Weaverville

Elaine Downing
928-486-5295

24 Hour Shift

EMERGENCY SHIFT TICKET and EVALUATION FORM						Contractor Name	
The responsible Government Officer will complete this form each shift						Fireline Builders	
Incident or Project Name August Complex West Zone		Incident Number CAMEU010843		Request Number E-99		Operator #1 Jim Smith	Operator #2 John Jones
Agreement Number LNU01234567						Operator Furnished By: <input checked="" type="checkbox"/> Contractor <input type="checkbox"/> Government	
Equipment Make CAT			Equipment Model / Type Dozer D6H			Operating Supplies Furnished By: <input checked="" type="checkbox"/> Contractor <input type="checkbox"/> Government	
Serial Number 6LN3344			Licence Number			Equipment Status <input checked="" type="checkbox"/> Inspected <input checked="" type="checkbox"/> Under Agreement	
Equipment Use						Released by Government <input type="checkbox"/>	
(Circle) Hours / Days / Miles						Withdrawn by Contractor <input type="checkbox"/>	
Date	Start	Stop	Work	Assignment		Remarks/Comments **	
8/2	0700	2400	17	Division J			
8/3	0001	0700	7	Division J			
Vendor Rating						Govt. Rep. Name and Position - PRINT Mike Brown, Div J	
Met Performance Expectations						Govt. Rep. Signature <i>Mike Brown</i>	
Equipment in Safe Working Condition						Contractor Signature <i>Jim Smith</i>	
Operator Skill Level						Date 08/03/16	
Operates Safely						Time 0700	
Operator's Cooperation Level						Date 08/03/16	
Overall Performance						Time 0700	
* NOTE: Any rating of POOR requires an explanation in Comment Section.						CALFIRE 297	
**Final evaluation or for more documentation, use an ICS Form 230 or equivalent.						(Rev 3-2011)	
Pink - Finance		Blue - Home Unit HE Coordinator		Yellow - Vendor		White - Govt Representative	

12 Hour Shift

EMERGENCY SHIFT TICKET and EVALUATION FORM						Contractor Name	
The responsible Government Officer will complete this form each shift						H2O For You	
Incident or Project Name August Complex West Zone		Incident Number CAMEU010843		Request Number E-89		Operator #1 James Russell	Operator #2
Agreement Number LNU11111199						Operator Furnished By: <input checked="" type="checkbox"/> Contractor <input type="checkbox"/> Government	
Equipment Make Peterbilt			Equipment Model / Type 2000 Gallon			Operating Supplies Furnished By: <input checked="" type="checkbox"/> Contractor <input type="checkbox"/> Government	
Serial Number 11145N			Licence Number SE653574			Equipment Status <input checked="" type="checkbox"/> Inspected <input checked="" type="checkbox"/> Under Agreement	
Equipment Use						Released by Government <input type="checkbox"/>	
(Circle) Hours / Days / Miles						Withdrawn by Contractor <input type="checkbox"/>	
Date	Start	Stop	Work	Assignment		Remarks/Comments **	
8/2	0001	0700	7	Off Shift			
8/2	0700	2000	13	Division B			
8/2	2000	2400	4	Off Shift			
Vendor Rating						Govt. Rep. Name and Position - PRINT Steve Hampton, Div B	
Met Performance Expectations						Govt. Rep. Signature <i>Steve Hampton</i>	
Equipment in Safe Working Condition						Contractor Signature <i>James Russell</i>	
Operator Skill Level						Date 08/02/16	
Operates Safely						Time 2000	
Operator's Cooperation Level						Date 08/02/16	
Overall Performance						Time 2000	
* NOTE: Any rating of POOR requires an explanation in Comment Section.						CALFIRE 297	
**Final evaluation or for more documentation, use an ICS Form 230 or equivalent.						(Rev 3-2011)	
Pink - Finance		Blue - Home Unit HE Coordinator		Yellow - Vendor		White - Govt Representative	

24 Hour Shift to 12 Hour Shift

EMERGENCY SHIFT TICKET and EVALUATION FORM						Contractor Name	
The responsible Government Officer will complete this form each shift!						Fireline Builders	
Incident or Project Name		Incident Number		Request Number		Operator #1	Operator #2
August Complex West Zone		CAMEU010843		E-99		Jim Smith	John Jones
Agreement Number						Operator Furnished By:	
LNU01234567						<input checked="" type="checkbox"/> Contractor	<input type="checkbox"/> Government
Equipment Make			Equipment Model / Type			Operating Supplies Furnished By:	
CAT			Dozer D6H			<input checked="" type="checkbox"/> Contractor	<input type="checkbox"/> Government
Serial Number			Licence Number			Equipment Status	
6LN3344						<input checked="" type="checkbox"/> Inspected	<input checked="" type="checkbox"/> Under Agreement
Equipment Use						Released by Government	
(Circle) Hours / Days / Miles						Withdrawn by Contractor	
Date	Start	Stop	Work	Assignment			
Mo / Day							
8/2	0001	700	7	Division J			
8/2	0700	2300	16	Division J			
8/2	2300	2400	1	OFF SHIFT			
Vendor Rating						Remarks/Comments **	
		Poor*	Avg.	Good	Exc.	N/A	Supplier went from 24 hour to 12 hour shift
Met Performance Expectations		Vendor Rating must be completed					Govt. Rep. Name and Position - PRINT
Equipment in Safe Working Condition							Mike Brown Div. J
Operator Skill Level							Govt. Rep. Signature
Operates Safely							Mike Brown
Operator's Cooperation Level							Contractor Signature
Overall Performance							Jim Smith
						Date	Time
						08/02/20	0700
* NOTE: Any rating of POOR requires an explanation in Comment Section.						CALFIRE 297	
**Final evaluation or for more documentation, use an ICS Form 230 or equivalent.						(Rev 3-2011)	
Pink - Finance		Blue - Home Unit HE Coordinator		Yellow - Vendor		White - Govt Representative	

12 Hour Shift

EMERGENCY SHIFT TICKET and EVALUATION FORM						Contractor Name	
The responsible Government Officer will complete this form each shift!						H2O For You	
Incident or Project Name		Incident Number		Request Number		Operator #1	Operator #2
August Complex West Zone		CAMEU010843		E-89		James Russell	
Agreement Number						Operator Furnished By:	
LNU1111199						<input checked="" type="checkbox"/> Contractor	<input type="checkbox"/> Government
Equipment Make			Equipment Model / Type			Operating Supplies Furnished By:	
Peterbilt			2000 Gallon			<input checked="" type="checkbox"/> Contractor	<input type="checkbox"/> Government
Serial Number			Licence Number			Equipment Status	
11145N			SE653574			<input checked="" type="checkbox"/> Inspected	<input checked="" type="checkbox"/> Under Agreement
Equipment Use						Released by Government	
(Circle) Hours / Days / Miles						Withdrawn by Contractor	
Date	Start	Stop	Work	Assignment			
Mo / Day							
8/3	0001	0700	7	Off Shift			
8/3	0700	2000	13	Division B			
8/3	2000	2400	4	Off Shift			
Vendor Rating						Remarks/Comments **	
		Poor*	Avg.	Good	Exc.	N/A	Govt. Rep. Name and Position - PRINT
Met Performance Expectations		Vendor Rating must be completed					Steve Hampton, Div B
Equipment in Safe Working Condition							Govt. Rep. Signature
Operator Skill Level							Steve Hampton
Operates Safely							Contractor Signature
Operator's Cooperation Level							James Russell
Overall Performance							
						Date	Time
						08/03/20	2000
* NOTE: Any rating of POOR requires an explanation in Comment Section.						CALFIRE 297	
**Final evaluation or for more documentation, use an ICS Form 230 or equivalent.						(Rev 3-2011)	
Pink - Finance		Blue - Home Unit HE Coordinator		Yellow - Vendor		White - Govt Representative	



PUBLIC INFORMATION SECTION



Incident Information Line:
South Zone (949)433-2638 North Zone (530)628-0039

Status	
Incident Start Date: 7/30/2021	Incident Start Time: 6:00 p.m.
Total acres:	Containment:
Cause: Lightning	Total Personnel:

MEDIA – The California State Penal Code Section 409.5(d) allows the news media to enter scenes of disaster, riot or civil disturbance. Properly identified members of the news media should not be restricted from entering locations specified within the code. However, this does not include crime scenes, private property and does not imply that the news media may interfere with incident operations while they are in the areas of concern. More information can be found [here](#).



CAL FIRE SOCIAL MEDIA POLICY – When assigned to a CAL FIRE incident, you will adhere to the CAL FIRE Social Media Policy, Section 0691. You can find further information about the CAL FIRE Social Media Policy [here](#).



PHOTOGRAPHS AND VIDEOS OF INCIDENT – We are in a new era of media. Media no longer means news/broadcast industry, but now refers to anyone that has the capability to shoot video, photographs and post them onto social media sites in a matter of minutes. Unfortunately, we have seen some instances of photographs or videos that have depicted unsafe, unprofessional or embarrassing circumstances which are a serious breach of ethics. When this happens, it reflects poorly on all that are attached to this incident. Posting an inappropriate video, photo or blog comment could expose oneself to unwanted ramifications. It may be unsafe to shoot photos or video and a firefighter who is concentrating on a camera loses their situational awareness.

The Public Information Office would like copies of the video and pictures that you safely took while not in an emergency situation, fire suppression activity or in an overhead assignment. Bring your video and pictures to the Public Information trailer; they will be reviewed and possibly uploaded to our many CAL FIRE social media sites. Remember, we don't want photographs or videos that depict unsafe, unprofessional or embarrassing circumstances, which are a serious breach of ethics.



LOST AND FOUND – The Information Section will manage lost and found items for the incident.

MAIL SERVICE – The Information Section can assist you with sending and receiving mail.

Anderson Fairgrounds
 ATTN: South Zone Monument Fire Information
 (Your Name)
 1890 Briggs Street
 Anderson, CA 96007

TRAINING MESSAGE

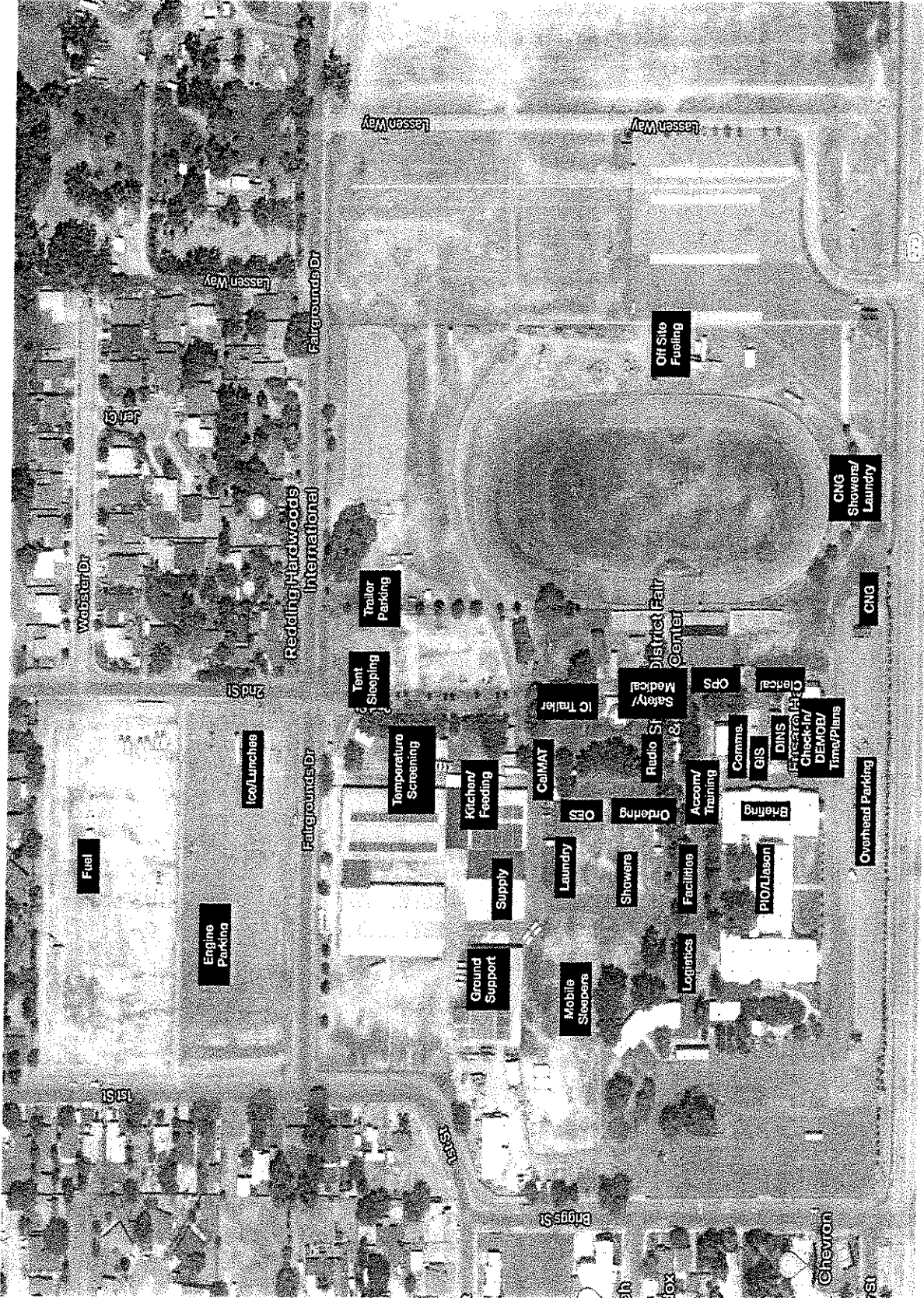
If you have just arrived at The Monument Fire as a Trainee, please don't forget to check in with the Training Specialist.

Do you want credit for this assignment?

Please make sure to check out with Training before you demob

Training is located behind the Briefing Hall
It only takes a few minutes to check in.





MONUMENT FIRE
 ANDERSON FAIRGROUNDS
 FACILITIES MAP
 CA-SHF-001187





DEMOBILIZATION PLAN
MONUMENT INCIDENT
CA-SHF-001187



DEMOB PROCEDURES

- Check the demob list daily. You can find the demob list posted around camp or by utilizing the QR code on your IAP.
- **Please report to demob only at your scheduled time.**
- **Only one person per resource is to report to demob.**
- **Every effort will be made to provide a remote demob.**
- The Demob Unit will provide you with an ICS-221 check-out form.
- For the following units, demob personnel will make radio contact to ensure you are clear for demobilization:
 - Supply Unit
 - Communications Unit
 - Accommodations Unit (If applicable)
- For the following units, you will report in person to complete your check-out:
 - Time Unit
 - Documentation Unit
 - Training Specialist (If applicable)
 - Ground Support Unit
- Return your completed ICS 221 to the Demob Unit and you will be advised of your status (released home, reassigned, etc.)

Greg Barnhart
Demobilization Unit Leader
CAL FIRE Incident Management Team 5

FIRING OPERATION CHECKLIST

Location: _____

Date: _____ Time: _____

Firing Supervisor _____

1. Personnel Briefing

- Objectives
- Conditions (fire environment)
- Resource assignments identified
 - Firing personnel
 - Holding forces
 - Lookouts
- Ignition plan/sequence
- Communication Plan
- Contingency Plan
- Safety issues

2. Go / No-Go

- All personnel briefed
- Weather forecast reviewed
- Resources in place
- Lookouts posted as needed
- Anchor and termination firing points identified
- Communications systems in place
- Fire behavior forecast reviewed
- Escape routes and safety zones established and made known
- Adjoining forces/Air Attack notified

3. Approval Prior To Firing

- Division Supervisor
- Branch Director
- Operations

4. Other Notifications

- Other: _____
- Other: _____

Attach Firing Operations Checklist to ICS-214

