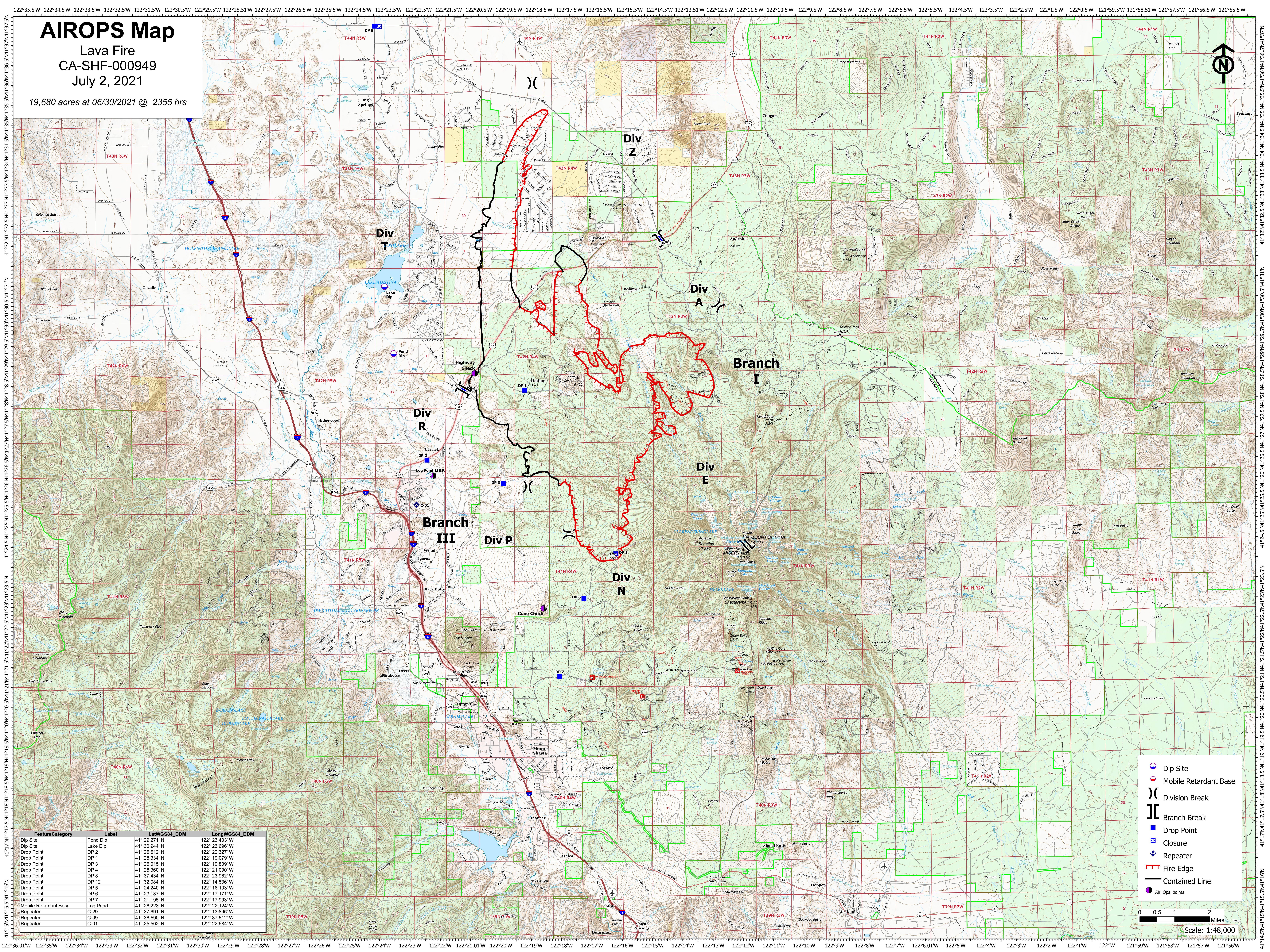


AIROPS Map

Lava Fire
CA-SHF-000949
July 2, 2021

19,680 acres at 06/30/2021 @ 2355 hrs



Feature	Category	Label	LatWGS84_DDM	LongWGS84_DDM
Dip Site	Pond Dip		41° 29.271' N	122° 23.403' W
Dip Site	Lake Dip		41° 30.944' N	122° 23.698' W
Drop Point	DP 2		41° 26.612' N	122° 22.327' W
Drop Point	DP 1		41° 28.334' N	122° 19.079' W
Drop Point	DP 3		41° 26.015' N	122° 19.809' W
Drop Point	DP 4		41° 28.360' N	122° 21.090' W
Drop Point	DP 8		41° 37.434' N	122° 23.962' W
Drop Point	DP 12		41° 32.084' N	122° 14.536' W
Drop Point	DP 5		41° 24.240' N	122° 16.103' W
Drop Point	DP 6		41° 23.137' N	122° 17.171' W
Drop Point	DP 7		41° 21.195' N	122° 17.993' W
Drop Point	DP 9		41° 26.223' N	122° 22.124' W
Repeater	C-29		41° 37.691' N	122° 13.896' W
Repeater	C-09		41° 36.590' N	122° 37.512' W
Repeater	C-01		41° 25.502' N	122° 22.684' W

- Dip Site
- Mobile Retardant Base
- Division Break
- Branch Break
- Drop Point
- Closure
- Repeater
- Fire Edge
- Contained Line
- Air_Ops_points

0 0.5 1 2 Miles
Scale: 1:48,000