

Branch V

Div Z

Div T

Div A

Branch I

Div R

Div E

Div P

Div N

Branch III

Weed

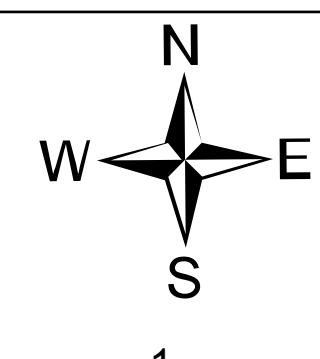
Lava ICP

Mount Shasta City



OPERATIONS MOBILE MAP

Lava Fire
CA-SHF-000949
July 5, 2021 Day



0 0.5 1 1.5 2 Miles
Approximate fire perimeter from infrared and GPS as of 7/4/2021 @ 2130
NAD 1983 UTM Zone 10N
Contour Interval 40 ft.

- Uncontrolled Fire Edge
- Contained Fire Edge
- Completed Dozer Line
- Completed Hand Line
- Completed Road as Line
- Branch Break
- Division Break
- Dip Site
- Incident Command Post
- Drop Point
- Repeater
- Water Source
- National Forest Boundary
- Wilderness Boundary
- Non-FS Land within Forest Boundary
- Direct Protection Areas
- Local
- CAL FIRE
- U.S. Forest Service
- Timberland Owner
- Campbell Global LLC
- Fruit Growers Supply Company
- Hancock Timber Resource Group
- Michigan-California Timber Company
- Roseburg Resources Company
- Shasta Cascade Timberlands LLC
- Sierra Pacific Industries
- Siller Brothers Inc.