

# LAVA FIRE IAP



**CA-SHF-000949**

**P5N3XW (0514)**

**JUNE 30, 2021**

**NIGHT SHIFT**

**1800 – 0600**

**NIGHT IAP**



**MAPS**

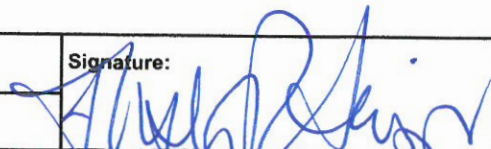




## INCIDENT OBJECTIVES (ICS 202)

<b>1. Incident Name:</b>		<b>2. Operational Period:</b> NIGHT	
LAVA		Date/Time From: 06/30/2021 1800      WED	Date/Time To: 07/01/2021 0600      THU
<b>3. Objective(s):</b>			
<b>Management Objectives:</b>			
<ol style="list-style-type: none"> <li>1. Ensure firefighter and public safety by using strategies and tactics that mitigate known and anticipated hazards while providing for highest probability of success.</li> <li>2. Maintain and enhance relationships with represented agencies, local landowners, and the general public.</li> <li>3. Provide timely and accurate fire information to cooperators and affected communities.</li> <li>4. Protect the natural resources in the fire area to create risk-based decisions while utilizing M.I.S.T. in the Mt. Shasta wilderness area.</li> <li>5. Effectively manage cost by implementing strategies and tactics that have a high probability of success.</li> </ol>			
<b>Control Objectives:</b>			
Keep fire:			
<ul style="list-style-type: none"> <li>· North of Cascade Gulch</li> <li>· East of Big Spring Road</li> <li>· South of Deer Mt Road</li> <li>· West of the North Gate Trailhead</li> </ul>			
<b>4. Operational Period Command Emphasis:</b>			
<b>General Situational Awareness:</b>			
<b>5. Site Safety Plan Required?</b> Yes <input type="checkbox"/> No <input checked="" type="checkbox"/>			
Approved Site Safety Plan(s) Located			
<b>6. Incident Action Plan</b> (the items checked below are included in this Incident Action Plan):			
<input checked="" type="checkbox"/> ICS 202	<input type="checkbox"/> ICS 207	Other Attachments:	
<input checked="" type="checkbox"/> ICS 203	<input type="checkbox"/> ICS 208	<input checked="" type="checkbox"/> SAFETY MESSAGE	_____
<input checked="" type="checkbox"/> ICS 204	<input checked="" type="checkbox"/> ICS 220	<input checked="" type="checkbox"/> 215A	_____
<input checked="" type="checkbox"/> ICS 205	<input checked="" type="checkbox"/> Map/Chart	<input checked="" type="checkbox"/> HR MESSAGE	_____
<input type="checkbox"/> ICS 205A	<input checked="" type="checkbox"/> Weather Forecast/Tides/Currents	<input checked="" type="checkbox"/> MIST	_____
<input checked="" type="checkbox"/> ICS 206			
<b>7. Prepared by:</b> ARTIE COLSON		Position/Title:    PSC2	Signature: <i>Artie Colson</i>
<b>8. Approved by Incident Commander:</b>		Name:    STEVE WATKINS	Signature: <i>Steve Watkins</i>
ICS 202		IAP Page	Date/Time:    06/30/2021 1400

## ORGANIZATION ASSIGNMENT LIST (ICS 203)

<b>1. Incident Name:</b>		<b>2. Operational Period:</b> NIGHT	
LAVA		Date/Time From: 06/30/2021 1800 WED	Date/Time To: 07/01/2021 0600 THU
<b>3. Incident Commander(s) and Command Staff:</b>		<b>7. Operations Section:</b>	
IC/UC	STEVE WATKINS; DARRYL LAWS CLINTON GOULD (T)	DAY OPS SECTION CHIEF	JEFF HINSON CHANCE TRAUB (T)
DEPUTY	MICHAEL STRAWHUN	NIGHT OPS SECTION CHIEF	JACK FROGGATT PAT BELL (T)
SAFETY OFFICER	GREG MARFIL	PLANNING OPS	ALEC LANE GORDON MEYER (T)
INFORMATION OFFICER	RAY SINGH; MICHELLE CARBONARO	DEPUTY OPS SECTION CHIEF	STEVE WALKER
LIAISON OFFICER	DAVID COOPER; DENNIS REIN	<b>Branch I</b>	
<b>4. Agency/Organization Representative(s):</b>		BRANCH DIRECTOR	
Agency/Organization	Name	DEPUTY	
SHF AGENCY ADMINISTRATOR	CAROLYN NAPPER	DIVISION/GROUP	A PHILIP GERHARDSON
CHP	ROBERT LYNAM	<b>Branch III</b>	
TIMBER INDUSTRY LIAISON	DARIN QUIGLEY	BRANCH DIRECTOR	
ROSEBURG FOREST PRODUCTS	RYAN DUCHI	DEPUTY	
UNION PACIFIC RAILROAD	GENE WOMACK	DIVISION/GROUP	M MIKE ANDERSON
LAKE SHASTINA FIRE	STEVEN PAPPAS	DIVISION/GROUP	R ABEL MATA
WEED FIRE	BRIAN CARTER	<b>Branch V</b>	
SISKIYOU COUNTY SHERIFF	LT. BEN WHETSTINE	BRANCH DIRECTOR	KENT CUNNINGHAM
OES	PATRICK TITUS	DEPUTY	
<b>5. Planning Section:</b>		DIVISION/GROUP	T KENT CUNNINGHAM
CHIEF	ARTIE COLSON	DIVISION/GROUP	Z BILL STRITON
READ	NICK MEYERS	<b>7b. Air Operations Branch:</b>	
RESOURCES UNIT	A.SINGER; S.SOLIS N.PHILLIPE; J.LEBLANC(T)	AIR OPS BRANCH DIRECTOR	STACI DICKSON
SITUATION UNIT	MARK LEMON; ROBERT HERRERA	AIR ATTACK SUPERVISOR	
DEMOB	MARIAN KADOTA	AIR SUPPORT SUPERVISOR	CURT WARNER
TRAINING SPECIALIST	BRAD SMITH	HELICOPTER COORDINATOR	
GISS	STEVE ROGNESS; DAVID GABALDON	AIR TANKER COORDINATOR	
ITSS	R. WATSON; A. HENNEN; J.ZAPATA(T)	<b>8. Finance/Administration Section:</b>	
IMET	ERIC KURTH	CHIEF	JOAN DISNEY LISA DOW (T)
FBAN	TARO PUSINA; JOSH EICHAMER (T)	DEPUTY	
DOCL	JOHANNA OSTLING	TIME UNIT	TIFFANIE SACHSE-SANTI PAULLA STEPHENS
<b>6. Logistics Section:</b>		PROCUREMENT UNIT	
CHIEF	MARK RATEKIN	COMPENSATION UNIT	
DEPUTY	RANDY JACKSON	COST UNIT	SANDRA TARVIN (T)
SUPPLY UNIT	D. GERSTUNG; J. MIDDLETON		
FACILITIES UNIT	MATTHEW WIGGINS		
GSUL	LARRY AMERJAN; VERNON SMITH		
COML	JOE MEHCIZ		
MEDICAL UNIT	MICKEY BRUNELLI		
FOOD UNIT	MICHAEL CHAPMAN		
<b>9. Prepared By:</b>		<b>Position/Title:</b> RESL	<b>Signature:</b>
Name:	ANSLEY SINGER	Date/Time:	06/30/2021 1400
ICS 203	IAP Page		



## Fire Weather Forecast



FORECAST NO: 4  
PREDICTION FOR: 6/30-7/1/2021  
SHIFT DATE: Night  
FORECAST ISSUED: 1130 6/30/2021

NAME OF FIRE: Lava Fire  
UNIT: CA-SHF  
SIGNED: *Eric C. Kurth*,  
Incident Meteorologist  
[eric.kurth@noaa.gov](mailto:eric.kurth@noaa.gov) (240)-778-5292

---

...Wind Shifts to Northwesterly Early Evening...

**WEATHER DISCUSSION:** Clear skies tonight. Prevailing winds shift to the northwest in the evening around 1900 PDT, with gusts up to 15-20 mph possible through 2100 PDT. This could bring a brief period of plume growth around sunset. Winds decrease through late evening, with downslope winds developing after midnight. An inversion is expected to develop around midnight, with smoke thickening under the inversion. Morning low temperatures should trend a few degrees cooler, with increased humidity recoveries.

---

**WEATHER FORECAST:**

**WEATHER:** Mostly clear. Areas smoke thickening under inversion.

**TEMPERATURES:** 58-63 valleys and 56-63 ridges.

**HUMIDITY:** 50-65 percent valleys and 40-50 percent ridges.

**20 FT WINDS:**

**UPPER SLOPE/RIDGETOP** - South winds 5 to 10 mph with gusts to 15 mph becoming Northwest 4 to 8 mph with gusts to 15 mph in the evening around 1800 PDT. Winds decrease after 2200 PDT, becoming downslope 2 to 5 mph overnight.

**LOWER SLOPE/VALLEY** - South 5 to 8 mph with gusts to 15 mph becoming Northwest 5 to 12 mph with gusts to 20 mph in the evening around 1900 PDT. Winds decrease after 2100 PDT, becoming variable 1 to 4 mph overnight,

**HAINES INDEX:** 4  
**LAL:** 1

**STABILITY/INVERSION:** Inversion with smoke laying down after midnight.

---

Please send Surface observations to [Eric.Kurth@noaa.gov](mailto:Eric.Kurth@noaa.gov) or text to (240)-778-5292

# FIRE BEHAVIOR FORECAST

FORECAST NUMBER: 5	TYPE OF FIRE: Wildfire
FIRE NAME: Lava, CA-SHF-000949	OPERATIONAL PERIOD: Night 1800 - 0600, 6/30/21 - 7/1/21
DATE ISSUED: June 30, 2021	TIME ISSUED: 1200
UNIT: Shasta Trinity NF, Shasta RD	SIGNED: /s/ Taro Pusina, FBAN Josh Eichamer FBAN (T)

## INPUTS

### WEATHER SUMMARY

See Incident IMET Weather Forecast

- Expect winds to become northerly around 1900 decreasing late evening becoming down slope after midnight.

## FIRE BEHAVIOR

### GENERAL:

\*\*\*Mt. Shasta ERC is 72\*\*\*

**Fuels:** Below average winter snowpack and very hot, dry windy conditions have created conditions one to two months ahead of average. Surface fuels consist of manzanita and shrubs with second growth ponderosa pine and mixed conifer in the overstory best represented by Scott and Burgan's SH5 and TL8 fuel models. ERC's and 1000-hour fuel moistures are at the 90<sup>th</sup> percentile and setting records for dryness for this time of year. 1000-hour dead fuel moistures are below 10% and live brush fuel moistures are below 100%.

**Topography:** Aspect are mostly west and north on the rugged, lava flow flanks of Mt. Shasta. The elevation range is 3000' - 7000' and slopes range from 20 to 70%. The lava rock creates difficult access and a high resistance to control.

### SPECIFIC FIRE BEHAVIOR:

- Expect active burning and resistance to control along uncontained flanks with moderate northerly winds impacting the fire around sunset shifting back to the south then east in the early morning.
- Unburned eyebrows and green islands adjacent to containment lines have the potential to flare up and slop over outside control lines. Moderate duration runs where slope and topography align will be possible with spotting distances of ½ to 1 mile before midnight. All fuels should be considered receptive to spotting, however, higher elevation brush fields are still curing and may slow fire spread
- Burning conditions expected to moderate after midnight as a moderate smoke inversion sets in mid-slope. Areas above and below the smoke inversion and within thermal belts may continue to consume actively through the evening with diurnally driven winds.

Potential daytime maximum head fire behavior:

- Shrub: 14 - 24' flame lengths, 64-200 chains/hr. rate of spread. Mixed conifer understory: 4 - 7' flame lengths, 9 - 30 chains/hr. rate of spread.
- Torching and short duration timber crown fire: 100 - 150' flame lengths, over 90 chains/hr rate of spread

**Timbered and higher elevations of the fire:** Fire will continue to consume where left unchecked. There is no significant fire history within the mid to upper elevations of the fire and critically dry fuels will lead to continued rapid rates of fire spread.

**Bush, Juniper, grass, and lower elevations of the fire:** Where the fire has crossed Hwy 97, interior pockets of unburned fuels will continue to consume and may pose spotting challenges. Rapid rates of spread can be expected in low lying areas should the fire escape containment line.

## AIR OPERATIONS

- Smoky conditions likely in the fire area until the inversion lifts around 1100 hours

## SAFETY

- Fire behavior may dictate indirect tactics in very challenging terrain. Resources are reminded that being in country not seen in daylight with unburned fuel in-between resources and the fire is a watchout situation.

**Division/Group Assignment List (ICS 204 WF)**  
**Controlled Unclassified Information//Basic**

<b>1. Incident Name:</b>				<b>3.</b>		
LAVA				<b>I</b>	<b>A</b>	
<b>2. Operational Period:</b> NIGHT						
Date/Time From: 06/30/2021 1800 WED		Date/Time To: 07/01/2021 0600 THU				
<b>4. Operations Personnel</b>						
<b>OPERATIONS CHIEF</b>		JACK FROGGATT PAT BELL (T)		<b>BRANCH DIRECTOR</b>		
<b>DIVISION/GROUP SUPERVISOR</b>		PHILIP GERHARDSON		<b>FIELD SAFETY</b> NICK BIANCHINI		
<b>5. Resources Assigned this Period</b>						
Strike Team / Task Force / Resource Designator		LWD	Leader	Number Persons	Drop Off PT./Time	Pick Up PT./Time
HC1 DEL ROSA IHC C-18		07/11	DAVID BORERO	18	ICP/1800	ICP/0600
HC1 BECKWOURTH IHC C-7		07/10	MIKE WINTCH	20	ICP/1800	ICP/0600
ENG3 SHF E 323 E-46		07/10	KENNETH VAUGHN	5	ICP/1800	ICP/0600
ENG3 MNF 353 E-77		07/12	CONROY COLEMAN	5	ICP/1800	ICP/0600
DOZER 15 NEED INFO					ICP/1800	ICP/0600
DOZER 12 NEED INFO					ICP/1800	ICP/0600
EMPF O-83		07/13	SHANE SCHUSTER	1	ICP/1800	ICP/0600
EMPF O-79		07/13	LUIS ARANA	1	ICP/1800	ICP/0600
<b>6. Control Operations/Work Assignments:</b> Continue to progress south with line construction. Mop up and hold to secure the fire edge.						
<b>7. Special Instructions:</b>						
<b>8. Division/Group Communication Summary</b>						
Function	Channel	RX Frequency N/W	RX Tone/NAC	TX Frequency N/W	TX Tone/NAC	Mode
COMMAND	1 (SHFR)	171.5750	15 (162.2)	165.0125	15 (162.2)	
TACTICAL	6 (NIFC TAC1)	168.0500		168.0500		
AIR TO GROUND	13 (A/G TAC)	169.1500		169.1500		
<b>9. Prepared By (Resource Unit Leader)</b>			<b>Approved By (Planning Section Chief)</b>		<b>Date</b>	<b>Time</b>
SHANNON SOLIS <i>Solis</i>			ARTIE COLSON <i>Artie Colson</i>		06/30/2021	1400

## Division/Group Assignment List (ICS 204 WF)

Controlled Unclassified Information//Basic

<b>1. Incident Name:</b>		<b>3.</b>	
LAVA		<b>Branch:</b>	<b>Division/Group</b>
<b>2. Operational Period:</b> NIGHT		<b>III</b>	<b>M</b>
Date/Time From: 06/30/2021 1800 WED	Date/Time To: 07/01/2021 0600 THU		

4. Operations Personnel			
<b>OPERATIONS CHIEF</b>	JACK FROGGATT PAT BELL (T)	<b>BRANCH DIRECTOR</b>	
<b>DIVISION/GROUP SUPERVISOR</b>	MIKE ANDERSON	<b>FIELD SAFETY</b>	NICK BIANCHINI

5. Resources Assigned this Period					
Strike Team / Task Force / Resource Designator	LWD	Leader	Number Persons	Drop Off PT./Time	Pick Up PT./Time
HC1 ARROYO GRANDE IHC C-20	07/12	PHIL HERNANDEZ	19		
HC2I LASSEN C-2	07/10	ALLEN SCHULTZE	19		
ENG3 SHF E 321 E-51	07/10	BOB TONEY	8		
WTS3 PJ AND R E-27	07/10	PAUL YOKOYAMA	1		
ENG6 IMPERIAL FORESTRY E-64	07/13	JORGE CHAPARRO	3		

**6. Control Operations/Work Assignments:**  
 Continue with direct line construction to the Wilderness boundary.  
 Ensure adequate mop up of completed line to keep fire from progressing southwest toward the community of Weed.

**7. Special Instructions:**

8. Division/Group Communication Summary						
Function	Channel	RX Frequency N/W	RX Tone/NAC	TX Frequency N/W	TX Tone/NAC	Mode
COMMAND	1 (SHFR)	171.5750	15 (162.2)	165.0125	15 (162.2)	
TACTICAL	10 (NIFC TAC7)	168.2500		168.2500		
AIR TO GROUND	13 (A/G TAC)	169.1500		169.1500		

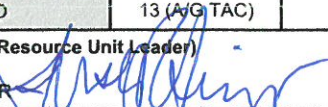

<b>9. Prepared By (Resource Unit Leader)</b>	<b>Approved By (Planning Section Chief)</b>	<b>Date</b>	<b>Time</b>
SHANNON SOLIS <i>Sesolis</i>	ARTIE COLSON <i>Artie Colson</i>	06/30/2021	1026



**Division/Group Assignment List (ICS 204 WF)**  
Controlled Unclassified Information//Basic

<b>1. Incident Name:</b>			<b>3.</b>			
LAVA			<b>Branch:</b>		<b>Division/Group</b>	
<b>2. Operational Period:</b> NIGHT			<b>III</b>		<b>R</b>	
Date/Time From: 06/30/2021 1800	WED	Date/Time To: 07/01/2021 0600				
<b>4. Operations Personnel</b>						
<b>OPERATIONS CHIEF</b>		JACK FROGGATT PAT BELL (T)		<b>BRANCH DIRECTOR</b>		
<b>DIVISION/GROUP SUPERVISOR</b>		ABEL MATA		<b>FIELD SAFETY</b>		NICK BIANCHINI
<b>5. Resources Assigned this Period</b>						
Strike Team / Task Force / Resource Designator		LWD	Leader	Number Persons	Drop Off PT./Time	Pick Up PT./Time
WTS2 PRO-DUMP AND EXCAVATING E-31		07/10	MIKE SEABOURNE	1	LAVA ICP/1800	LAVA ICP/0600
ENG6 GRAYBACK FORESTRY E-1 E-65		07/13	JOHN FISH	3	LAVA ICP/1800	LAVA ICP/0600
ENG6 EARTH INDUSTRIES E-67		07/12	ARRON ABEL	3	LAVA ICP/1800	LAVA ICP/0600
ES3 SHF 3675C E-107		07/11	TERRY R WILLIAMSON	27	LAVA ICP/1800	LAVA ICP/0600
EMPF O-81		07/13	JOSHUA DART	1	LAVA ICP/1800	LAVA ICP/0600
EMTF O-92		07/13	ANDREW LOVEJOY	1	LAVA ICP/1800	LAVA ICP/0600
<b>6. Control Operations/Work Assignments:</b>						
Ensure adequate mop up of completed line construction and defensive firing operations from last shift to keep fire from progressing south/southwest toward the community of Weed.						
<b>7. Special Instructions:</b>						
<b>8. Division/Group Communication Summary</b>						
Function	Channel	RX Frequency N/W	RX Tone/NAC	TX Frequency N/W	TX Tone/NAC	Mode
COMMAND	1 (SHFR)	171.5750	15 (162.2)	165.0125	15 (162.2)	
TACTICAL	8 (NIFC TAC5)	166.7250		166.7250		
AIR TO GROUND	13 (A/G TAC)	169.1500		169.1500		
<b>9. Prepared By (Resource Unit Leader)</b>			<b>Approved By (Planning Section Chief)</b>		<b>Date</b>	<b>Time</b>
NANCY PHILLIPE <i>Nancy Phillippe</i>			ARTIE COLSON <i>Artie Colson</i>		06/30/2021	1400

**Division/Group Assignment List (ICS 204 WF)**  
**Controlled Unclassified Information//Basic**

<b>1. Incident Name:</b>				<b>3.</b>			
LAVA				<b>Branch:</b>		<b>Division/Group</b>	
<b>2. Operational Period:</b> NIGHT				V		T	
Date/Time From: 06/30/2021 1800 WED		Date/Time To: 07/01/2021 0600 THU					
<b>4. Operations Personnel</b>							
<b>OPERATIONS CHIEF</b>		JACK FROGGATT		<b>BRANCH DIRECTOR</b>		KENT CUNNINGHAM	
<b>DIVISION/GROUP SUPERVISOR</b>		KENT CUNNINGHAM		<b>FIELD SAFETY</b>			
<b>5. Resources Assigned this Period</b>							
Strike Team / Task Force / Resource Designator		LWD	Leader	Number Persons	Drop Off PT./Time	Pick Up PT./Time	
ES3 NEU 9231C E-10007			LONDON HAACK		FIRELINE/1800	LAVA ICP/0600	
ES3 HUU 9120C E-10008					FIRELINE/1800	LAVA ICP/0600	
ES3 SKU 9261C E-50		10/03	KENT CUNNINGHAM	19	FIRELINE/1800	LAVA ICP/0600	
ENG3 3112					FIRELINE/1800	LAVA ICP/0600	
S/T 9250L					FIRELINE/1800	LAVA ICP/0600	
DZS2 LNU 9142L E-10005			NATE GRAY	8	FIRELINE/1800	LAVA ICP/0600	
DZS2 BTU 9213L E-10006				7	FIRELINE/1800	LAVA ICP/0600	
S/T 9213L					FIRELINE/1800	LAVA ICP/0600	
S/T 9242L					FIRELINE/1800	LAVA ICP/0600	
DOZ 2640					FIRELINE/1800	LAVA ICP/0600	
DOZ2 SKU 2642 E-5					FIRELINE/1800	LAVA ICP/0600	
DOZ2 SKU 2640 E-4					FIRELINE/1800	LAVA ICP/0600	
WT 28					FIRELINE/1800	LAVA ICP/0600	
WTS2 WATER WETTER E-10009			MICHAËL SISSON	1	FIRELINE/1800	LAVA ICP/0600	
HEQB O-10012			SARAH COLLAMER	1	FIRELINE/1800	LAVA ICP/0600	
<b>6. Control Operations/Work Assignments:</b>							
Continue line construction and mopup.							
<b>7. Special Instructions:</b>							
<b>8. Division/Group Communication Summary</b>							
Function	Channel	RX Frequency N/W	RX Tone/NAC	TX Frequency N/W	TX Tone/NAC	Mode	
COMMAND	1 (SHFR)	171.5750	15 (162.2)	165.0125	15 (162.2)		
TACTICAL	11 (CDF TAC24)	151.3325	16 (192.8)	151.3325	16 (192.8)		
AIR TO GROUND	13 (A/G TAC)	169.1500		169.1500			
<b>9. Prepared By (Resource Unit Leader)</b>				<b>Approved By (Planning Section Chief)</b>		<b>Date</b>	<b>Time</b>
ANSLEY SINGER 				ARTIE COLSON 		06/30/2021	1400

**Division/Group Assignment List (ICS 204 WF)**  
Controlled Unclassified Information//Basic

<b>1. Incident Name:</b>			<b>3.</b>			
LAVA			<b>Branch:</b>		<b>Division/Group</b>	
<b>2. Operational Period:</b> NIGHT			V		Z	
Date/Time From: 06/30/2021 1800 WED		Date/Time To: 07/01/2021 0600 THU				
<b>4. Operations Personnel</b>						
<b>OPERATIONS CHIEF</b> JACK FROGGATT		<b>BRANCH DIRECTOR</b> KENT CUNNINGHAM				
<b>DIVISION/GROUP SUPERVISOR</b> BILL STRITON		<b>FIELD SAFETY</b>				
<b>5. Resources Assigned this Period</b>						
Strike Team / Task Force / Resource Designator		LWD	Leader	Number Persons	Drop Off PT./Time	Pick Up PT./Time
HS1 9262G					FIRELINE/1800	LAVA ICP/0600
HS1 9221G					FIRELINE/1800	LAVA ICP/0600
ES3 SHU 9240C					FIRELINE/1800	LAVA ICP/0600
ES3 9250C					FIRELINE/1800	LAVA ICP/0600
ES3 9241C					FIRELINE/1800	LAVA ICP/0600
ES3 3151C					FIRELINE/1800	LAVA ICP/0600
DOZ2 MORGAN CREEK E-10014					FIRELINE/1800	LAVA ICP/0600
DOZ2 9250L					FIRELINE/1800	LAVA ICP/0600
DOZ2 DON DAVIS TOWING E-10015					FIRELINE/1800	LAVA ICP/0600
WTT2 530					FIRELINE/1800	LAVA ICP/0600
WTT2 29					FIRELINE/1800	LAVA ICP/0600
WTT2 30					FIRELINE/1800	LAVA ICP/0600
WTT2 E-31					FIRELINE/1800	LAVA ICP/0600
WTT2 27					FIRELINE/1800	LAVA ICP/0600
HEQB O-10013			DAN BONFANTE	1	FIRELINE/1800	LAVA ICP/0600
<b>6. Control Operations/Work Assignments:</b>						
Continue line construction and mopup.						
<b>7. Special Instructions:</b>						
<b>8. Division/Group Communication Summary</b>						
Function	Channel	RX Frequency N/W	RX Tone/NAC	TX Frequency N/W	TX Tone/NAC	Mode
COMMAND	1 (SHFR)	171.5750	15 (162.2)	165.0125	15 (162.2)	
TACTICAL	12 (CDF TAC25)	159.2775	16 (192.8)	159.2775	16 (192.8)	
AIR TO GROUND	13 (A/G TAC)	169.1500		169.1500		
<b>9. Prepared By (Resource Unit Leader)</b>		<b>Approved By (Planning Section Chief)</b>		<b>Date</b>	<b>Time</b>	
SHANNON SOLIS <i>S Solis</i>		ARTIE COLSON <i>Artie Colson</i>		06/30/2021	1400	

# HEALTH AND SAFETY MESSAGE

*SAFETY* starts with *YOU*

We are ALL accountable for SAFE behaviors

June 30-July 1, 2021

INCIDENT: Lava

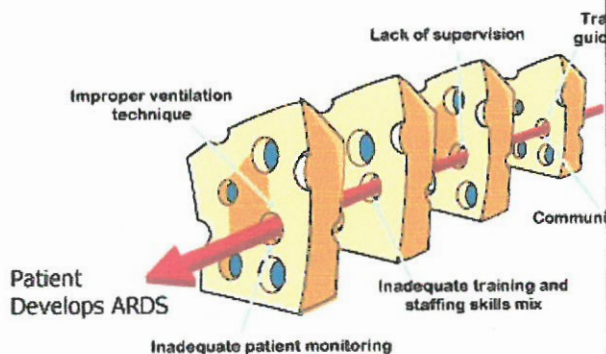
Night Operations:

## Major Hazards and Risks:

- **Marijuana Grows:** Do not enter areas unless there is a police presence, and be aware toxic chemicals may be present.
- **Lava Beds:** Work slowly and ALWAYS wear your gloves. If you trip and fall your hands will have some protection from the lava rock.
- **Hazard Trees:** Assess ALL Trees in Work Areas....In addition to suppression and mop-up operations, assess hazard trees when you take breaks and park vehicles. Check out your IRPG pgs. 22-23.
- **Heat Related Injuries:** Stay Hydrated, drink plenty of fluids, take frequent breaks, and listen to your body.
- **Driving:** Practice “defensive driving” and always use headlights and observe posted speed limits.

## Situation Awareness

- **Speak up if you see something that looks wrong!!!**
- **Get a good briefing prior to beginning task**
- **Ask if you don't understand!!!!**



**HELP BREAK THE “ERROR CHAIN”!!**

## Human Factors Barriers to Situation Awareness and Decision Making

### Hazardous Attitudes:

- Invulnerable – This can't happen to us
- Anti-authority – Disregard of the team effort
- Impulsive- Do something even if its wrong
- Macho- Trying to impress or prove something
- Complacent-Just another routine fire
- Resigned-We can't make a difference
- Group Think-Afraid to speak up or disagree



**Thanks from your Safety Team!!**

Greg Marfil, Nick Bianchini, Pedro Martinez

**Know the medical plan before you need it. Three answers to know.**

- **What are you going to do if someone gets hurt?**
- **How will you get them out of here?**
- **How long will it take to get them to a hospital?**

BR/DIV	HAZARDOUS ACTIONS/CONDITIONS	MITIGATIONS/WARNINGS/REMEDIES
All	Lava Beds	<ul style="list-style-type: none"> <li>• Slow down, and be sure of where you are stepping.</li> <li>• Wear gloves at all times to protect your hands from the sharp lava rock.</li> <li>• Flag and identify vertical tubes.</li> <li>• Be cautious when driving through lava beds.</li> </ul>
All	Hazard Trees	<ul style="list-style-type: none"> <li>• Follow "Hazard Tree Safety" guidelines, IRPG pages 22-23.</li> <li>• Post lookouts, or use a spotter in mop-up areas with personnel.</li> <li>• Don't park vehicles or take breaks in high concentrations of hazard trees.</li> <li>• Establish trigger points for disengagement during high wind events.</li> <li>• Remember that the hazard zone extends a minimum of 2 1/2 tree heights.</li> <li>• Post road guards when appropriate.</li> </ul>
All	Air Operations	<ul style="list-style-type: none"> <li>• Follow "Aviation Watch-Out Situations" on page 46, IRPG.</li> <li>• Don't plan on air resources for medical transport or resupply.</li> <li>• Refer to page 58, IRPG for directing bucket drops.</li> <li>• Ensure positive communication with all air resources.</li> <li>• Ensure Drone Operations are coordinated with air resources</li> </ul>
All	Steep Terrain & Rolling Debris	<ul style="list-style-type: none"> <li>• Maintain 8-10' spacing when working and walking.</li> <li>• Don't work above any personnel.</li> <li>• Be on the lookout for rolling rocks, debris, or burning material.</li> </ul>
All	Power Utilities	<ul style="list-style-type: none"> <li>• Refer to the IRPG pages 24-25 for Power Line Safety.</li> <li>• Notify all personnel of down electrical lines.</li> <li>• Always treat downed wires as energized.</li> <li>• Identify and avoid high tension transmission lines.</li> </ul>
All	Heat Related Injury (HRI)& Dehydration	<ul style="list-style-type: none"> <li>• Drink Fluids throughout operational period (6-8 quarts/shift).</li> <li>• Maintain water/electrolyte ratio of 3 to 1.</li> <li>• Carry extra water on line and cache water at drop points.</li> <li>• Take frequent breaks, minimum of 10 minutes every hour.</li> <li>• Allow out of area resources to acclimate before expecting peak performance.</li> <li>• Recognize symptoms of <b>HEAT RELATED INJURY</b>.</li> </ul>
All	Extended Medical Extraction Times	<ul style="list-style-type: none"> <li>• Identify helispots and communicate Lats/Longs to DIVS.</li> <li>• Be familiar with the Medical Plan and communicate 8 line promptly.</li> <li>• Evaluate the necessity to send personnel into areas with limited access.</li> <li>• Be aware of weather conditions (i.e. smoke inversions, high winds etc.), that could affect the ability of helicopters to reach you.</li> <li>• Don't rely on helicopters exclusively.</li> </ul>
T & Z	Marijuana Grows	<ul style="list-style-type: none"> <li>• Do not enter areas unless there is a law enforcement presence.</li> <li>• Be aware of the presence of toxic chemicals.</li> <li>• Local criminal elements and organized crime can be involved in the organization.</li> <li>• Anti-Personnel Devices (APD) may be present.</li> </ul>
All	COVID-19 Environment	<ul style="list-style-type: none"> <li>• Utilize social distancing (6 feet). Wear a facemask if you can't social distance.</li> <li>• Maintain the "module of one" concept.</li> <li>• Disinfect vehicle interiors, and commonly touched surfaces frequently.</li> <li>• Do not share devices (i.e. cellphones, laptops, radios etc.).</li> <li>• Utilize technology to communicate while maintaining social distance.</li> <li>• Wash your hands frequently.</li> </ul>

Incident Name:

Lava

Operational Period: Night

June 30-July 1, 2021

OSC2:

Jeff Hinson/Alec lane

SOF2:

Greg Marfil

Date and Time Prepared:

June 30th, 2021 0800 Hours





# INCIDENT RADIO COMMUNICATIONS PLAN (ICS 205)

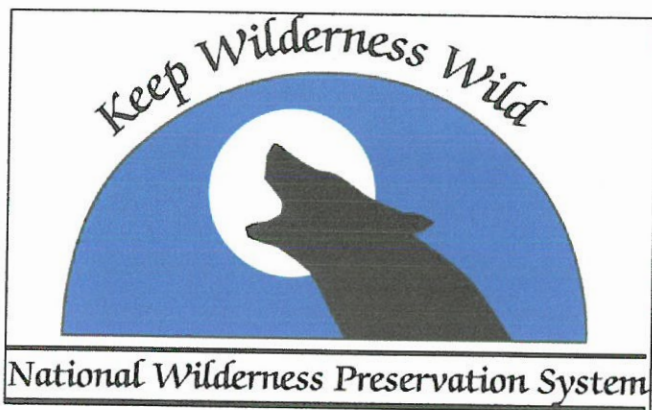
## Controlled Unclassified Information//Basic

<b>1. Incident Name:</b>		<b>2. Date/Time Prepared:</b>		<b>3. Operational Period:</b>	
LAVA		Date: 06/30/2021	Time: 1243	Date/Time From: 06/30/2021 1800	Date/Time To: 07/01/2021 0600
				WED	THU

4. Basic Radio Channel Use:										
Zone Group	Ch #	Function	Channel Name/Trunked Radio System Talkgroup	Assignment	RX Freq	RX Tone/NAC	TX Freq	TX Tone/NAC	Mode (A, D, or M)	Remarks
1	1	COMMAND	SHFR	COMMAND	171.5750		165.0125	15(162.2)	A	
1	2	COMMAND	NIFC C1	NOT IN USE	170.9750	1(110.9)	168.7000	1(110.9)	A	NOT IN USE
1	3	COMMAND	NIFC C9	NOT IN USE	170.0125	1(110.9)	165.2500	1(110.9)	A	NOT IN USE
1	4	COMMAND	NIFC C29	NOT IN USE	171.5375	1(110.9)	164.8625	1(110.9)	A	NOT IN USE
1	5	TACTICAL	NIFC TAC 2	I/A ONLY	168.2000		168.2000		A	I/A Only
1	6	TACTICAL	NIFC TAC 1	DIV A	168.0500		168.0500		A	Branch 1
1	7	TACTICAL	NIFC TAC 3	AVAILABLE	168.6000		168.6000		A	Branch 1 / DIV D (day)
1	8	TACTICAL	NIFC TAC 5	DIV R	166.7250		166.7250		A	Branch 3
1	9	TACTICAL	NIFC TAC 6	AVAILABLE	166.7750		166.7750		A	Branch 3 / DIV H (day)
1	10	TACTICAL	NIFC TAC 7	DIV M	168.2500		168.2500		A	Branch 3
1	11	TACTICAL	CDF TAC 24	DIV T	151.3325	16(192.8)	151.3325	16(192.8)	A	Branch 5
1	12	TACTICAL	CDF TAC 25	DIV Z	159.2775	16(192.8)	159.2775	16(192.8)	A	Branch 5
1	13	AIR TO GROUND	A/G TAC	ALL DIVS	169.1500		169.1500		A	
1	14	AIR TO GROUND	A/G CMD	ALL DIVS	167.9500		167.9500		A	Div/Branch use with Air
1	15	TACTICAL	CALCORD	ALL DIVS	156.0750	6(156.7)	156.0750	6(156.7)	A	Medical
1	16	AIR GUARD	AIR GUARD	ALL DIVS	168.6250		168.6250	1(110.9)	A	Emergency Use Only

<b>5. Special Instructions:</b>	
<b>6. Prepared By</b> (Communications Unit Leader)	
Name: JOE MEHCIZ, COM1 661-332-7608	
Signature:	
Date/Time: 06/30/2021 1243	
<b>ICS 205</b>	
<b>IAP Page</b>	

## MINIMUM IMPACT SUPPRESSION TECHNIQUES (MIST) – “Do the least damage”



Firefighter and public safety is always the first priority in any suppression action, including operations in wilderness. Use of MIST provides guidelines for preserving wilderness areas for present and future generations.

When evaluating fire management actions, the potential degradation of wilderness character should be considered before, and given significantly more weight than, economic efficiency, and convenience. Unless human life or private property is immediately threatened, only those actions that preserve wilderness character and/or have localized, short-term adverse impacts to wilderness character should be implemented.

# MOUNT SHASTA WILDERNESS

## FIRELINE CONSTRUCTION

- Take advantage of natural barriers wherever possible.
- Use cold-trail and/or wet line when appropriate.
- If the decision is made to construct line, use only the width and depth necessary for halting the fire spread. Minimize ground disturbance.
- Minimize bucking and cutting of trees to establish fire line; build line around logs when feasible and effective.
- Limb vegetation only to the extent necessary to stop fire spread.
- Avoid cutting live trees whenever possible.
- As an alternative to felling, consider allowing ignited trees and snags to burn themselves out. Ensure adequate safety measures are communicated to those affected by this decision.
- If burning trees or snags pose a serious threat of spreading firebrands, extinguish the fire with water and/or dirt wherever possible.
- Use cross cut saws unless use of chain saws is approved.

## AIR OPERATIONS

- Limit retardant or foam use, use water instead. If retardant and foam is appropriate, avoid drops near water.
- Minimize the number of helispots in wilderness. Use alternate sites outside wilderness. Use natural openings as much as possible.
- Size the helispots for the appropriate size helicopter. Consider long line remote hook operations instead of helispots for logistical support.

## REHABILITATION

- Remove signs of human activity. Remove signs, flagging, garbage, and equipment.
- Restore disturbed areas.
- Scarify the top 2-4" of soil in heavily compacted areas and scatter needles, twigs, branches, over the area.
- Rehabilitate newly established trails on slopes <6%, water bar trails created on steeper slopes.
- Scatter cut material and camouflage cut surfaces with dirt.
- Do not use non-native materials, avoid introducing invasive species.



## ***Lava Fire Incident Training Program***

A TNSP is assigned to this incident and will be performing the majority of duties "virtually".

To receive documented credit for your assignment, scan the QR Code or click on the link below to access and complete the Trainee Registration Form. Once registered you will receive additional instructions via text. For training related questions, call Brad Smith (TNSP) at 209-770-4809 or email [bradley\\_smith@firenet.gov](mailto:bradley_smith@firenet.gov)



[Lava Fire - Trainee Registration Form](#)



# Facilities Map

College of the Siskiyous  
Lava Fire - CA-SHF000949

June 30, 2021

Entrance  
& Exit

No Access

College of the Siskiyous

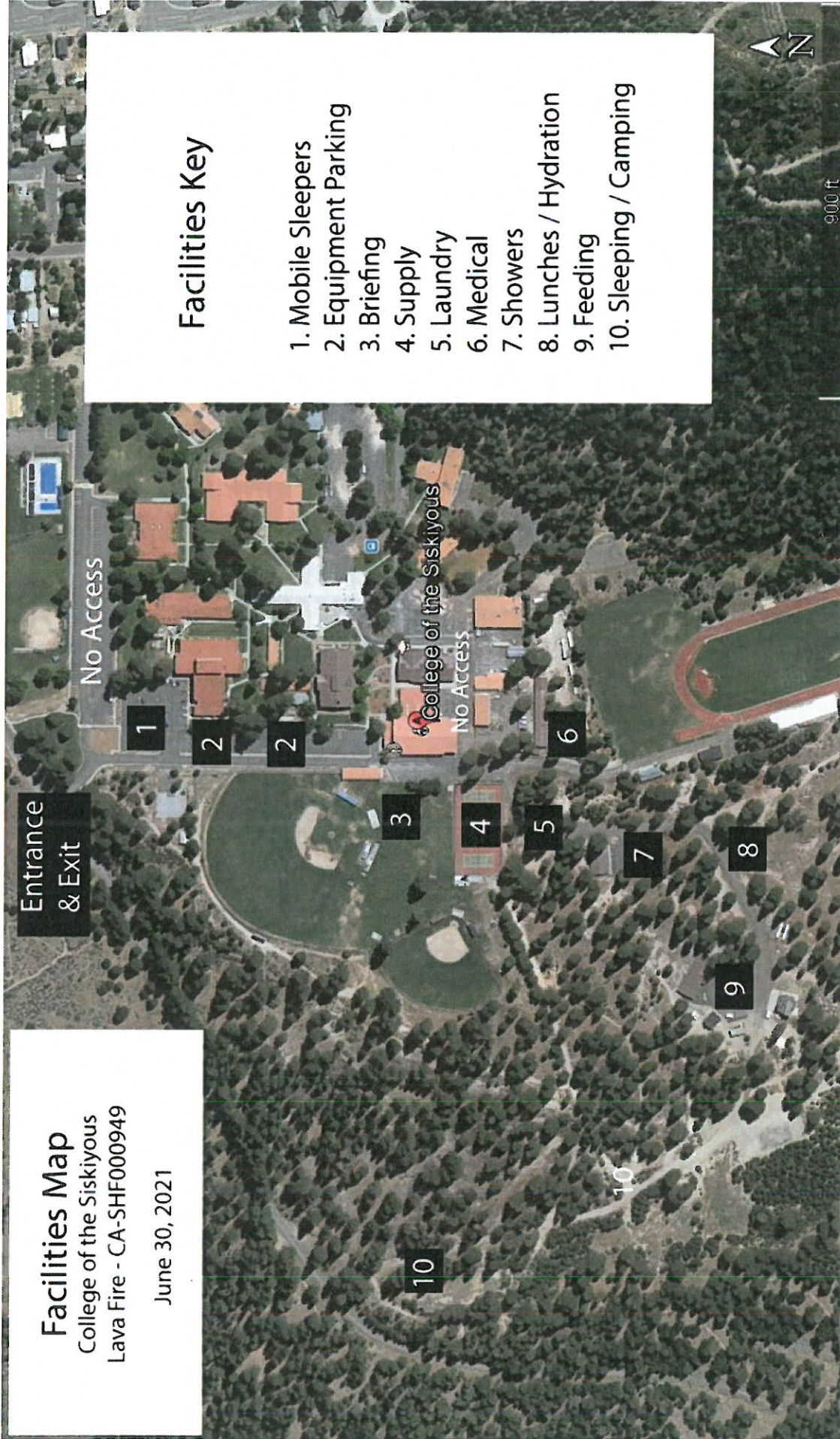
No Access

## Facilities Key

1. Mobile Sleepers
2. Equipment Parking
3. Briefing
4. Supply
5. Laundry
6. Medical
7. Showers
8. Lunches / Hydration
9. Feeding
10. Sleeping / Camping



900 ft

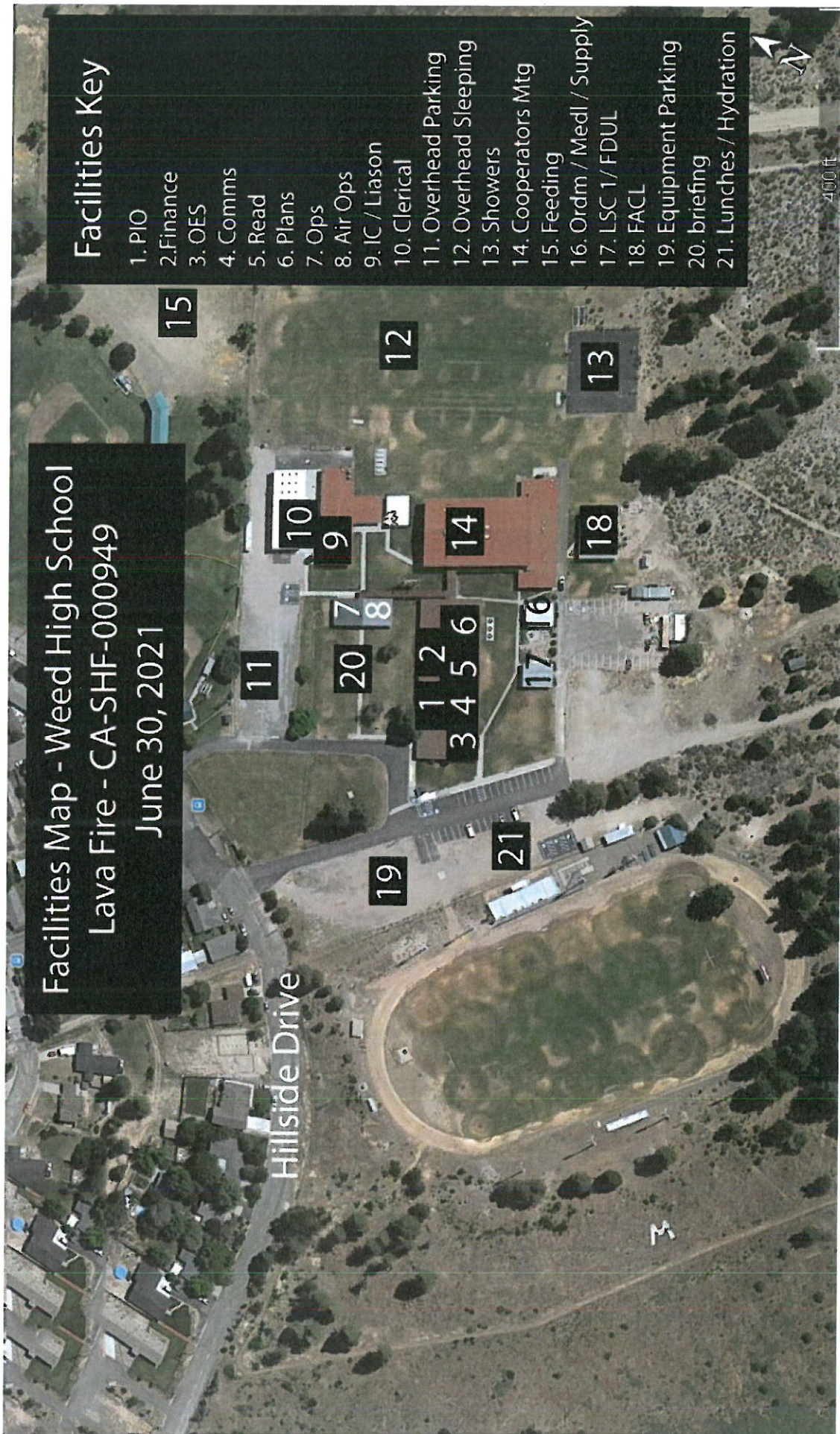


Facilities Map - Weed High School  
Lava Fire - CA-SHF-000949  
June 30, 2021

Hillside Drive


### Facilities Key

- 1. PIO
- 2. Finance
- 3. OES
- 4. Comms
- 5. Read
- 6. Plans
- 7. Ops
- 8. Air Ops
- 9. IC / Liason
- 10. Clerical
- 11. Overhead Parking
- 12. Overhead Sleeping
- 13. Showers
- 14. Cooperators Mtg
- 15. Feeding
- 16. Ordsm / Medl / Supply
- 17. LSC 1 / FDUL
- 18. FAFL
- 19. Equipment Parking
- 20. briefing
- 21. Lunches / Hydration







1. Incident Name				2. Operational Period				
<b>Lava Incident</b>				Date/Time: <b>6/30/2021 - 7/1/2021 (1800-0600)</b>				
3. EMS / Ambulance Services/Aid Stations/REMS								
Name		Location		Frequency/Phone		Advanced Life Support (ALS) Yes No		
Mountain Medics 4x4 ALS Ambulance (24 hours)		Hwy 97 & 42N15		Command		X		
Mt. Shasta Ambulance		1020 Oak St. Mt. Shasta, CA 96067		911		X		
4. Air Rescue / Air Ambulance Services								
Name		Location		Type of Aircraft & Capability				
PHI Air Medical		Redding, CA (530) 221-0646		Type 3 Air Ambulance, ALS				
Reach 5		Redding, CA (800) 252-5050		Type 3 Air Ambulance, ALS				
CHP H14/H16		Redding, CA (530) 225-2040		Type 3, ALS, Hoist (Day Time Only)				
Coast Guard		Arcadia, CA (707) 839-6100		Type 2, ALS, Hoist (Night)				
5. Hospitals (all times estimated from incident location)								
Name & Level	GPS Datum – WGS 84 Degrees Decimal Minutes		Travel Time Air Gnd		Phone	Helipad Yes No		Address
Mercy Mt. Shasta (Level 3)	Lat:	N 41° 19.117'		5	20	(530) 926-6111	X	914 Pine St. Mt. Shasta, CA
	Long:	W 122° 19.203'		MINS	MINS			
Fairchild Medical Center (Level 4)	Lat:	N 41° 43.164'		10	35	(530) 842-4121	X	444 Bruce Street Yreka, CA
	Long:	W 122° 38.741'		MINS	MINS			
Shasta Regional (Level 3)	Lat:	N 40° 53.72		20	1..25	(530) 244-5400	X	1100 Butte St. Redding, CA
	Long:	W 124° 05.45		MINS	HRS			
Mercy Medical Center Redding (Level 2)	Lat:	N 40° 34.33		20	1.25	530-225-6000	X	2175 Rosaline Ave. Redding CA
	Long:	W 122° 23.80		MINS	HRS			
U.C. Davis Medical Center (Level 1 Trauma/Burn)	Lat:	N 38° 33.293		1.75	3.5	916-734-3636	X	2315 Stockton Blvd. Sacramento, CA
	Long:	W 121° 27.317		HRS	HRS			
6. Division / Crew Emergency Pre-Plan								
<i>Update and discuss with assigned resources daily.</i>								
Fireline EMT / Medic's Division / Branch Location								
Air Hoist site location site: Lat: / Long: / Elevation:								
Helispot: Lat: / Long: / Elevation:								
7. Prepared By (Medical Unit Leader)			8. Date/Time		9. Reviewed By (Safety Officer)		10. Date/Time	
Mickey Brunelli - MEDL 			6/30/2021 1200		Greg Marfil - SOF2		6/30/2021 1200	

**Medical Incident Report**

FOR A **NON-EMERGENCY INCIDENT**: WORK THROUGH CHAIN OF COMMAND TO REPORT AND TRANSPORT INJURED PERSONNEL AS NECESSARY.

FOR A **MEDICAL EMERGENCY**: IDENTIFY ON SCENE INCIDENT COMMANDER BY NAME AND POSITION AND ANNOUNCE "MEDICAL EMERGENCY" TO INITIATE RESPONSE FROM COMMUNICATIONS

**Use the following items to communicate situation to communications/dispatch.**

**1. CONTACT COMMUNICATIONS / DISPATCH** (Verify correct frequency prior to starting report)

*Ex: "Communications, Div. Alpha. Stand-by for Emergency Traffic."*

**2. INCIDENT STATUS:** Provide incident summary (including number of patients) and command structure.

*Ex: "Communications, I have a Red priority patient, unconscious, struck by a falling tree.*

*Requesting air ambulance to Forest Road 1 at (Lat./Long.)*

*"This will be the Trout Meadow Medical Incident, IC is TFLD Jones. EMT Smith is providing medical care."*

Severity of Emergency  
AND  
Transport Priority  
(priority 1, 2, 3)

- RED / PRIORITY 1 Life or limb threatening injury or illness. Evacuation need is IMMEDIATE**  
*Ex: Unconscious, difficulty breathing, bleeding severely, 2° - 3° burns more than 4 palm sizes, heat stroke, disoriented.*
- YELLOW / PRIORITY 2 Serious injury or illness. Evacuation may be DELAYED if necessary.**  
*Ex: Significant trauma, unable to walk, 2° - 3° burns not more than 1-3 palm sizes.*
- GREEN / PRIORITY 3 Minor Injury or illness. Non-Emergency transport**  
*Ex: Sprains, strains, minor heat-related illness.*

Nature of Injury or Illness  
&  
Mechanism of Injury

*Brief Summary of Injury or Illness  
(Ex: Unconscious, Struck by Falling Tree)*

Transport Request

*Air Ambulance / Short Haul/Hoist  
Ground Ambulance / Other*

Patient Location

*Descriptive Location & Lat. / Long. (WGS84)*

Incident Name

*Geographic Name + "Medical"  
(Ex: Trout Meadow Medical)*

On-Scene Incident Commander

*Name of on-scene IC of Incident within an  
Incident (Ex: TFLD Jones)*

Crew Patient Care

*Name of Care Provider  
(Ex: EMT Smith)*

**3. INITIAL PATIENT ASSESSMENT:** Complete this section for each patient as applicable (start with the most severe patient)

Patient Assessment:      Age:      Weight:      Chief Complaint:  
(IRPG PAGE 106)

Skin Signs: (color/moisture/temp)      Level of Consciousness:      BP:      HR:      Respirations:

Treatment:

**4. TRANSPORT PLAN:**

Evacuation Location (drop point, intersection, helispot, Lat. / Long, hazards)      Patient's ETA to Location:

**5. ADDITIONAL RESOURCES / EQUIPMENT NEEDS:**

*Paramedic / EMT - Crews - Immobilization Devices - AED - Oxygen - Trauma Bag - IV/Fluid(s) - Splints - Rope rescue - Wheeled litter - HAZMAT - Extrinsic*

**6. COMMUNICATIONS: Identify State Air/Ground EMS Frequencies and Hospital Contacts as applicable**

Function	Channel Name/Number	Receive (RX)	Tone/NAC *	Transmit (TX)	Tone/NAC *
COMMAND					
AIR-TO-GRND					
TACTICAL	Calcord	156.0750	6 (156.7)	156.0750	6 (156.7)

**7. CONTINGENCY: Considerations:** If primary options fail, what actions can be implemented in conjunction with primary evacuation method?  
*Be thinking ahead.*

**8. ADDITIONAL INFORMATION:** Updates/Changes, etc.

**REMEMBER: Confirm ETA's of resources ordered. Act according to your level of training**  
**Be Alert - Keep Calm - Think Clearly - Act Decisively**  
**\*\*\* Follow up with MEDL upon return to ICP \*\*\***