

# LAVA FIRE



# IAP



**INCIDENT  
ACTION PLAN**



**MAPS**



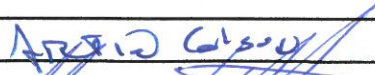
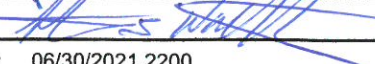
**CA-SHF-000949**

**P5N3XW (0514)**

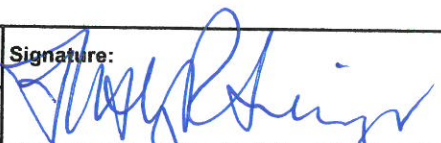
**JULY 1, 2021**

**DAY SHIFT 0600 – 1800**

# INCIDENT OBJECTIVES (ICS 202)

<b>1. Incident Name:</b>		<b>2. Operational Period: DAY</b>	
LAVA		Date/Time From: 07/01/2021 0600 THU	Date/Time To: 07/01/2021 1800 THU
<b>3. Objective(s):</b>			
<b>Management Objectives:</b>			
<ol style="list-style-type: none"> <li>1. Ensure firefighter and public safety by using strategies and tactics that mitigate known and anticipated hazards while providing for highest probability of success.</li> <li>2. Maintain and enhance relationships with represented agencies, local landowners, and the general public.</li> <li>3. Provide timely and accurate fire information to cooperators and affected communities.</li> <li>4. Protect the natural resources in the fire area to create risk-based decisions while utilizing M.I.S.T. in the Mt. Shasta wilderness area.</li> <li>5. Effectively manage cost by implementing strategies and tactics that have a high probability of success.</li> </ol>			
<b>Control Objectives:</b>			
Keep fire:			
<ul style="list-style-type: none"> <li>· North of Cascade Gulch</li> <li>· East of Big Spring Road</li> <li>· South of Deer Mt Road</li> <li>· West of the North Gate Trailhead</li> </ul>			
<b>4. Operational Period Command Emphasis:</b>			
<b>General Situational Awareness:</b>			
<b>5. Site Safety Plan Required?</b> Yes <input type="checkbox"/> No <input checked="" type="checkbox"/>			
<b>Approved Site Safety Plan(s) Located</b>			
<b>6. Incident Action Plan</b> (the items checked below are included in this Incident Action Plan):			
<input checked="" type="checkbox"/> ICS 202	<input type="checkbox"/> ICS 207	Other Attachments:	
<input checked="" type="checkbox"/> ICS 203	<input type="checkbox"/> ICS 208	<input checked="" type="checkbox"/> SAFETY MESSAGE	
<input checked="" type="checkbox"/> ICS 204	<input checked="" type="checkbox"/> ICS 220	<input checked="" type="checkbox"/> 215A	
<input checked="" type="checkbox"/> ICS 205	<input checked="" type="checkbox"/> Map/Chart	<input checked="" type="checkbox"/> HR MESSAGE	
<input type="checkbox"/> ICS 205A	<input checked="" type="checkbox"/> Weather Forecast/Tides/Currents	<input checked="" type="checkbox"/> MIST	
<input checked="" type="checkbox"/> ICS 206			
<b>7. Prepared by:</b> ARTIE COLSON		<b>Position/Title:</b> PSC2	<b>Signature:</b> 
<b>8. Approved by Incident Commander:</b>		<b>Name:</b> STEVE WATKINS	<b>Signature:</b> 
<b>ICS 202</b>		<b>IAP Page</b>	<b>Date/Time:</b> 06/30/2021 2200

## ORGANIZATION ASSIGNMENT LIST (ICS 203)

<b>1. Incident Name:</b>		<b>2. Operational Period:</b> DAY	
LAVA		Date/Time From: 07/01/2021 0600 THU	Date/Time To: 07/01/2021 1800 THU
<b>3. Incident Commander(s) and Command Staff:</b>		<b>7. Operations Section:</b>	
IC/UC	STEVE WATKINS; DARRYL LAWS CLINTON GOULD (T)	DAY OPS SECTION CHIEF	JEFF HINSON CHANCE TRAUB (T)
DEPUTY	MICHAEL STRAWHUN	NIGHT OPS SECTION CHIEF	JACK FROGGATT PAT BELL (T)
SAFETY OFFICER	GREG MARFIL	PLANNING OPS	ALEC LANE GORDON MEYER (T)
INFORMATION OFFICER	RAJ SINGH; MICHELLE CARBONARO	DEPUTY OPS SECTION CHIEF	STEVE WALKER
LIAISON OFFICER	DAVID COOPER; DENNIS REIN	<b>Branch</b> I	
<b>4. Agency/Organization Representative(s):</b>		BRANCH DIRECTOR	STEVE BURNS
<b>Agency/Organization</b>	<b>Name</b>	DIVISION/GROUP	A DANIEL GUSE JOSHUA DOMINGUEZ (T)
SHF AGENCY ADMINISTRATOR	CAROLYN NAPPER	DIVISION/GROUP	E UNSTAFFED
CHP	ROBERT LYNAM	<b>Branch</b> III	
TIMBER INDUSTRY LIAISON	DARIN QUIGLEY	BRANCH DIRECTOR	DREW GRAHAM
ROSEBURG FOREST PRODUCTS	RYAN DUCHI	DIVISION/GROUP	N MIKE CARTER JOHNATHAN DUNCAN (T)
UNION PACIFIC RAILROAD	GENE WOMACK	DIVISION/GROUP	P MIKE MARTINEZ JOHN HUNT (T)
LAKE SHASTINA FIRE	STEVEN PAPPAS	DIVISION/GROUP	R CHRIS VERO NOLAN ROTH (T)
WEED FIRE	BRIAN CARTER	<b>Branch</b> V	
SISKIYOU COUNTY SHERIFF	LT. BEN WHETSTINE	BRANCH DIRECTOR	LARRY TURMAN
OES	PATRICK TITUS	DIVISION/GROUP	T LARRY TURMAN
<b>5. Planning Section:</b>		DIVISION/GROUP	Z SHAWN RALEY
CHIEF	ARTIE COLSON	<b>Branch</b> .	
READ	NICK MEYERS	DIVISION/GROUP	CONTINGENCY
RESOURCES UNIT	S. SOLIS; A. SINGER; N.PHILLIPE; J.LEBLANC (T)	<b>7b. Air Operations Branch:</b>	
SITUATION UNIT	MARK LEMON; ROBERT HERRERA	AIR OPS BRANCH DIRECTOR	STACI DICKSON
DEMOB	MARIAN KADOTA	AIR ATTACK SUPERVISOR	
TRAINING SPECIALIST	JOHN LEBLANC	AIR SUPPORT SUPERVISOR	CURT WARNER
GISS	STEVE ROGNESS; DAVID GABALDON	HELICOPTER COORDINATOR	
ITSS	R.WATSON; A.HENNEN; J.ZAPATA(T)	<b>8. Finance/Administration Section:</b>	
IMET	ERIC KURTH	CHIEF	JOAN DISNEY LISA DOW (T)
FBAN	TARO PUSINA; JOSH EICHAMER(T)	DEPUTY	
DOCL	JOHANNA OSTLING	TIME UNIT	TIFFANIE SACHSE-SANTI PAULLA STEPHENS
<b>6. Logistics Section:</b>		COST UNIT	SANDRA TARVIN (T)
CHIEF	MARK RATEKIN		
DEPUTY	RANDY JACKSON		
SUPPLY UNIT	DAVID GERSTUNG; JIM MIDDLETON		
FACILITIES UNIT	MATTHEW WIGGINS		
GSUL	LARRY AMERJAN; VERNON SMITH		
COML	JOE MEHCIZ		
MEDICAL UNIT	MICKEY BRUNELLI		
FOOD UNIT	MICHAEL CHAPMAN		
<b>9. Prepared By:</b>		<b>Position/Title:</b> RESL	<b>Signature:</b>
ICS 203	Name: ANSLEY SINGER	Date/Time: 06/30/2021 2200	
	IAP Page		



## Fire Weather Forecast



FORECAST NO: 5  
PREDICTION FOR: 7/1/2021  
SHIFT DATE: Day  
FORECAST ISSUED: 2030 6/30/2021

NAME OF FIRE: Lava Fire  
UNIT: CA-SHF  
SIGNED: Eric C. Kurth,  
Incident Meteorologist  
eric.kurth@noaa.gov

---

...Hot and Dry Weather Continues...

**WEATHER DISCUSSION:** Sunny with smoke and hazy conditions. Morning inversion will break shortly after sunrise. Afternoon high temperatures will again be hot, but continue to trend a little less hot. Winds are expected to be light and variable in the early morning, becoming south by mid-morning. These winds increase in the afternoon with gusts to 17 to 25 mph by early afternoon. Winds shift to northwest by early evening for the northern portion of the fire.

---

**WEATHER FORECAST:**

**WEATHER:** Sunny. Areas of smoke.

**TEMPERATURES:** 94-98 valleys and 83-89 ridges.

**HUMIDITY:** 12-16 percent valleys and 20-30 percent ridges.

**20 FT WINDS:**

**UPPER SLOPE/RIDGETOP** - South winds 5 to 10 mph gusting up to 15 mph around noon, becoming southeast 2 to 5 mph by sunset for the southern portion of the fire. For the northern portion of the fire are winds shift to the north 5 to 10 mph with gusts to 15 mph in the early evening, starting around 1800 PDT.

**LOWER SLOPE/VALLEY** - Light variable winds becoming southwest 8 to 15 mph with gusts to 25 mph in the afternoon. For the northern portion of the fire area winds shift to northwest 4 to 8 mph in the early evening starting around 1800 PDT.

**HAINES INDEX:** 4  
**LAL:** 1

**STABILITY/INVERSION:** Morning inversion with smoke laying down, breaking shortly after dawn.

---

# FIRE BEHAVIOR FORECAST

FORECAST NUMBER: 6	TYPE OF FIRE: Wildfire
FIRE NAME: Lava, CA-SHF-000949	OPERATIONAL PERIOD: 0600 – 1800 7/1/21
DATE ISSUED: June 30, 2021	TIME ISSUED: 2030
UNIT: Shasta Trinity NF, Shasta RD	SIGNED: /s/ Taro Pusina, FBAN Josh Eichamer FBAN (T)

## INPUTS

### WEATHER SUMMARY

*See Incident IMET Weather Forecast*

- Expect diurnal winds, initially light, downslope/down drainage, shifting to the south and southwest with gusts to 25 during the heat of the day, then decreasing and becoming light and downslope after dark.
- Northerly winds will again surface over the northern half of the fire around 1800 becoming calm shortly after sunset.

## FIRE BEHAVIOR

**GENERAL:** *\*\*\*Highly unstable atmosphere (Haines 4) = very high to extreme, plume dominated fire behavior\*\*\**

**Mt. Shasta ERC is 72**

**Fuels:** Below average winter snowpack and very hot, dry windy conditions have created conditions one to two months ahead of average. Surface fuels consist of manzanita and shrubs with second growth ponderosa pine and mixed conifer in the overstory best represented by Scott and Burgan's SH5 and TL8 fuel models. ERC's and 1000-hour fuel moistures are *at the 90<sup>th</sup> percentile and setting records for dryness for this time of year.*

Live Fuel Sampling for July 1<sup>st</sup>

District	Manzanita (live)	Ponderosa Pine Needles	1000-Hour (dead)
Mount Shasta	116%	105%	4%
McCloud	112%	123%	8%

**Topography:** Aspect are mostly, west and north on the rugged, lava flow flanks of Mt. Shasta. The elevation range is 3000' - 9000' and slopes range from 20 to 70%. The lava rock creates difficult access and a high resistance to control.

### SPECIFIC FIRE BEHAVIOR:

- Expect active burning and resistance to control along uncontained flanks.
- Unburned eyebrows and green islands adjacent to containment lines have the potential to flare up and slop over outside control lines.
- Moderate to high duration runs are possible where slope and topography align will be possible with spotting distances of ½ to 1 mile.
- All fuels should be considered receptive to spotting, however, higher elevation brush fields are still curing and may slow fire spread.

### Potential daytime maximum head fire behavior:

- Shrub: 14 - 24' flame lengths, 64-200 chains/hr. rate of spread. Mixed conifer understory: 4 - 7' flame lengths, 9 - 30 chains/hr. rate of spread.
- Torching and short duration timber crown fire: 100 - 150' flame lengths, over 90 chains/hr rate of spread

## AIR OPERATIONS

- Smoky conditions likely in the fire area in the morning until the inversion lifts around 1100 hours.

## SAFETY

- Special consideration should be given to large column development particularly prior to sunset. Column collapse can result in strong outflow gusty and erratic winds and fire growth.

## Division/Group Assignment List (ICS 204 WF)

Controlled Unclassified Information//Basic

<b>1. Incident Name:</b>		<b>3.</b>	
LAVA		<b>Branch:</b>	<b>Division/Group</b>
<b>2. Operational Period:</b> DAY		I	A
Date/Time From: 07/01/2021 0600	THU	Date/Time To: 07/01/2021 1800	THU

4. Operations Personnel			
<b>OPERATIONS CHIEF</b>	JEFF HINSON CHANCE TRAUB (T)	<b>BRANCH DIRECTOR</b>	STEVE BURNS
<b>DIVISION/GROUP SUPERVISOR</b>	DANIEL GUSE JOSHUA DOMINGUEZ (T)	<b>FIELD SAFETY</b>	PEDRO MARTINEZ

5. Resources Assigned this Period					
Strike Team / Task Force / Resource Designator	LWD	Leader	Number Persons	Drop Off PT./Time	Pick Up PT./Time
HC1 ELK MT IHC C-4	07/10	REYMUNDO REYES	21	LAVA ICP/0600	LAVA ICP/1800
HC2I FIRESTORM 15A C-13	07/13	BEN PAVAN	20	LAVA ICP/0600	LAVA ICP/1800
HC2I FIRESTORM 15B C-14	07/13	LEVI CARDIFF	19	LAVA ICP/0600	LAVA ICP/1800
HC2I FIRESTORM NCC-17 C-31	07/12	ALEX RHEA	20	LAVA ICP/0600	LAVA ICP/1800
HC2I FIRESTORM NCC-19 C-33	07/12	GENE LOPEZ	20	LAVA ICP/0600	LAVA ICP/1800
ENG3 TMU E 341 E-47	07/11	TED KING	5	LAVA ICP/0600	LAVA ICP/1800
ENG3 INF 331 E-71	07/13	BLAKE HUBBARD	5	LAVA ICP/0600	LAVA ICP/1800
ENG3 BAILEY E-79	07/13	GREG BAILEY	3	LAVA ICP/0600	LAVA ICP/1800
ENG6 EARTH E-66	07/13	RUDY VOSS	3	LAVA ICP/0600	LAVA ICP/1800
DOZ2 ENF 3 E-57	07/11	DANIEL STARK	4	LAVA ICP/0600	LAVA ICP/1800
DOZ2 E-112				LAVA ICP/0600	LAVA ICP/1800
WTT1 MSH 4 E-1	07/09	TYLER CERVELLI	1	LAVA ICP/0600	LAVA ICP/1800
TFLD O-190	07/13	MATTHEW MILLER	1	LAVA ICP/0600	LAVA ICP/1800
TFLD(T) O-27	07/06	DAVE FOSTER	1	LAVA ICP/0600	LAVA ICP/1800
EMTF O-94	07/12	NATHAN BENNER	1	LAVA ICP/0600	LAVA ICP/1800
EMTF O-87	07/12	BRANDEN WILSON	1	LAVA ICP/0600	LAVA ICP/1800

8. Division/Group Communication Summary						
Function	Channel	RX Frequency N/W	RX Tone/NAC	TX Frequency N/W	TX Tone/NAC	Mode
COMMAND	1 (SHFR)	171.5750	15 (162.2)	165.0125	15 (162.2)	
TACTICAL	6 (NIFC TAC1)	168.0500		168.0500		
AIR TO GROUND	13 (A/G TAC)	169.1500		169.1500		

<b>9. Prepared By (Resource Unit Leader)</b>	<b>Approved By (Planning Section Chief)</b>	<b>Date</b>	<b>Time</b>
NANCY PHILLIPE <i>Nancy Phillippe</i>	ARTIE COLSON <i>Artie Colson</i>	06/30/2021	2200

**Division/Group Assignment List (ICS 204 WF)**  
**Controlled Unclassified Information//Basic**

<b>1. Incident Name:</b>		<b>3.</b>	
LAVA		<b>Branch:</b>	<b>Division/Group</b>
<b>2. Operational Period:</b> DAY		I	A
Date/Time From: 07/01/2021 0600 THU	Date/Time To: 07/01/2021 1800 THU		

4. Operations Personnel			
<b>OPERATIONS CHIEF</b>	JEFF HINSON CHANCE TRAUB (T)	<b>BRANCH DIRECTOR</b>	STEVE BURNS
<b>DIVISION/GROUP SUPERVISOR</b>	DANIEL GUSE JOSHUA DOMINGUEZ (T)	<b>FIELD SAFETY</b>	PEDRO MARTINEZ

5. Resources Assigned this Period					
Strike Team / Task Force / Resource Designator	LWD	Leader	Number Persons	Drop Off PT./Time	Pick Up PT./Time

**6. Control Operations/Work Assignments:**

Continue direct and/or indirect line construction to the Whitney Falls Trail Head.  
 Ensure adequate mop-up to prevent spread to the north east.  
 Scout and identify contingency line.

**7. Special Instructions:**

All hired equipment passing through evacuated areas with staffed road closures will be required to present a current Lava Fire Access Pass. Divisions will distribute the passes at briefing breakouts. Do not display, give away, or transfer your pass! Write your E# on the pass and present it to law enforcement when requested.

8. Division/Group Communication Summary						
Function	Channel	RX Frequency N/W	RX Tone/NAC	TX Frequency N/W	TX Tone/NAC	Mode
COMMAND	1 (SHFR)	171.5750	15 (162.2)	165.0125	15 (162.2)	
TACTICAL	6 (NIFC TAC1)	168.0500		168.0500		
AIR TO GROUND	13 (A/G TAC)	169.1500		169.1500		

<b>9. Prepared By (Resource Unit Leader)</b>	<b>Approved By (Planning Section Chief)</b>	<b>Date</b>	<b>Time</b>
NANCY PHILLIPE <i>Nancy Phillippe</i>	ARTIE COLSON <i>Artie Colson</i>	06/30/2021	2200





## Division/Group Assignment List (ICS 204 WF)

Controlled Unclassified Information//Basic

<b>1. Incident Name:</b>			<b>3.</b>			
LAVA			<b>Branch:</b>		<b>Division/Group</b>	
<b>2. Operational Period:</b> <b>DAY</b>			<b>III</b>		<b>N</b>	
Date/Time From: 07/01/2021 0600                      THU		Date/Time To: 07/01/2021 1800                      THU				
<b>4. Operations Personnel</b>						
<b>OPERATIONS CHIEF</b>		JEFF HINSON CHANCE TRAUB (T)		<b>DIVISION/GROUP SUPERVISOR</b>		
				MIKE CARTER JOHNATHAN DUNCAN (T)		
<b>BRANCH DIRECTOR</b>		DREW GRAHAM		<b>FIELD SAFETY</b>		
				PEDRO MARTINEZ		
<b>5. Resources Assigned this Period</b>						
Strike Team / Task Force / Resource Designator		LWD	Leader	Number Persons	Drop Off PT./Time	Pick Up PT./Time
HC1 TAHOE IHC C-5		07/10	TOBIAS GREENBERG	21	LAVA ICP/0600	LAVA ICP/1800
HC1 TALLAC IHC C-23		07/03	KYLE BETTY	19	LAVA ICP/0600	LAVA ICP/1800
HC1 TRINITY IHC C-1		07/09	TRISTAN DIAS	20	LAVA ICP/0600	LAVA ICP/1800
ENG3 HEK JONES E-76		07/13	BRINN JONES	3	LAVA ICP/0600	LAVA ICP/1800
DOZ2 NORTHSTATE E-58		07/12	CARSON METZ	2	LAVA ICP/0600	LAVA ICP/1800
DOZ2 SPRATT EXCAVATING E-118		07/13	ERIC SPRATT	2	LAVA ICP/0600	LAVA ICP/1800
DOZ2 BRAUN EQUIPMENT E-114 *24HR*		07/13	RYAN BRAUN	4	LAVA ICP/0600	LAVA ICP/1800
DOZ2 T&S DUBE E-69		07/13	JAMES ONTANO	4	LAVA ICP/0600	LAVA ICP/1800
DOZ3 LONE STAR ENTERPRIZE E-121 *24HR*		07/13	HARRIS JACKSON	4	LAVA ICP/0600	LAVA ICP/1800
DOZ2 BARRY BROWN E-116		07/13	BARRY BROWN	2	LAVA ICP/0600	LAVA ICP/1800
HEQB O-40		07/11	RIAN FABBR	1	LAVA ICP/0600	LAVA ICP/1800
HEQB O-41		07/13	TYSON LARGE	1	LAVA ICP/0600	LAVA ICP/1800
EMTF O-88		07/12	JONATHAN OBERG	1	LAVA ICP/0600	LAVA ICP/1800
EMTF (T) O-85		07/12	JUSTIN JOHNSON	1	LAVA ICP/0600	LAVA ICP/1800
<b>6. Control Operations/Work Assignments:</b>						
Continue direct line construction on the south side of Diller Canyon into the wilderness. Ensure adequate mop up to keep fire spreading south to Everitt Memorial Hwy.						
<b>7. Special Instructions:</b>						
All hired equipment passing through evacuated areas with staffed road closures will be required to present a current Lava Fire Access Pass. Divisions will distribute the passes at briefing breakouts. Do not display, give away, or transfer your pass! Write your E# on the pass and present it to law enforcement when requested.						
<b>8. Division/Group Communication Summary</b>						
Function	Channel	RX Frequency N/W	RX Tone/NAC	TX Frequency N/W	TX Tone/NAC	Mode
COMMAND	1 (SHFR)	171.5750		165.0125	15(162.2)	A
TACTICAL	9 (NIFC TAC6)	166.7750	1(110.9)	166.7750	1(110.9)	A
AIR TO GROUND	13 (A/G TAC)	169.1500		169.1500		A
<b>9. Prepared By (Resource Unit Leader)</b>			<b>Approved By (Planning Section Chief)</b>		<b>Date</b>	<b>Time</b>
NANCY PHILLIPE <i>Nancy Phillippe</i>			ARTIE COLSON <i>Artie Colson</i>		06/30/2021	2200

**Division/Group Assignment List (ICS 204 WF)**  
**Controlled Unclassified Information//Basic**

<b>1. Incident Name:</b>		<b>3.</b>	
LAVA		<b>III</b>	<b>P</b>
<b>2. Operational Period: DAY</b>			
Date/Time From: 07/01/2021 0600	THU	Date/Time To: 07/01/2021 1800	THU

4. Operations Personnel			
<b>OPERATIONS CHIEF</b>	JEFF HINSON CHANCE TRAUB (T)	<b>DIVISION/GROUP SUPERVISOR</b>	MICHAEL MARTINEZ JOHN HUNT (T)
<b>BRANCH DIRECTOR</b>	DREW GRAHAM	<b>FIELD SAFETY</b>	PEDRO MARTINEZ

5. Resources Assigned this Period					
Strike Team / Task Force / Resource Designator	LWD	Leader	Number Persons	Drop Off PT./Time	Pick Up PT./Time
HC1 KLAMATH IHC C-12	07/06	ANDREW ZINK	19	LAVA ICP/0600	LAVA ICP/1800
HC2I DIAMOND FIRE NCC 16 C-30	07/12	JERROD PHILLIPS	20	LAVA ICP/0600	LAVA ICP/1800
HC1 VALYERMO IHC C-19	07/12	MATTHEW RAMSTEAD	20	LAVA ICP/0600	LAVA ICP/1800
ENG3 LPF 354 E-75	07/13	SNOW TALIFERO	5	LAVA ICP/0600	LAVA ICP/1800
ENG6 GE FORESTRY E-63	07/13	EDGAR AQUILAR	3	LAVA ICP/0600	LAVA ICP/1800
DOZ2 STRIKE FIRST E-117 *24HR*	07/13	MIKE CHAVEZ	2	LAVA ICP/0600	LAVA ICP/1800
DOZ SHF 79	07/10	JOSH HERNANDEZ	2	LAVA ICP/0600	LAVA ICP/1800
DOZ3 CODY LAMB E-123	07/13	CODY LAMB	3	LAVA ICP/0600	LAVA ICP/1800
DOZ3 SUNRISE EXCAVATING E-125	07/13	BRYON ANDREW	2	LAVA ICP/0600	LAVA ICP/1800
WTT2 ENF W235 E-87	07/13	JOSHUA BOYD	2	LAVA ICP/0600	LAVA ICP/1800
TFLD(T) O-131	07/12	COLIN GUNDLE	1	LAVA ICP/0600	LAVA ICP/1800
EMTF O-84	07/12	JASON BARKER	1	LAVA ICP/0600	LAVA ICP/1800
EMTF O-86	07/12	JEFF OLIVER	1	LAVA ICP/0600	LAVA ICP/1800

**6. Control Operations/Work Assignments:**

**7. Special Instructions:**

All hired equipment passing through evacuated areas with staffed road closures will be required to present a current Lava Fire Access Pass. Divisions will distribute the passes at briefing breakouts. Do not display, give away, or transfer your pass! Write your E# on the pass and present it to law enforcement when requested.

8. Division/Group Communication Summary						
Function	Channel	RX Frequency N/W	RX Tone/NAC	TX Frequency N/W	TX Tone/NAC	Mode
COMMAND	1 (SHFR)	171.5750		165.0125	15(162.2)	A
TACTICAL	10 (NIFC TAC7)	168.2500	1(110.9)	168.2500	1(110.9)	A
AIR TO GROUND	13 (A/G TAC)	169.1500		169.1500		A

<b>9. Prepared By (Resource Unit Leader)</b>	<b>Approved By (Planning Section Chief)</b>	<b>Date</b>	<b>Time</b>
NANCY PHILLIPE	ARTIE COLSON	06/30/2021	2200

**Division/Group Assignment List (ICS 204 WF)**  
**Controlled Unclassified Information//Basic**

<b>1. Incident Name:</b>				<b>3.</b>			
LAVA				<b>Branch:</b>		<b>Division/Group</b>	
<b>2. Operational Period: DAY</b>				<b>III</b>		<b>R</b>	
Date/Time From: 07/01/2021 0600      THU		Date/Time To: 07/01/2021 1800      THU					
<b>4. Operations Personnel</b>							
<b>OPERATIONS CHIEF</b>		JEFF HINSON CHANCE TRAUB (T)		<b>DIVISION/GROUP SUPERVISOR</b>		CHRIS VERO NOLAN ROTH (T)	
<b>BRANCH DIRECTOR</b>		DREW GRAHAM		<b>FIELD SAFETY</b>		PEDRO MARTINEZ	
<b>5. Resources Assigned this Period</b>							
Strike Team / Task Force / Resource Designator		LWD	Leader	Number Persons	Drop Off PT./Time	Pick Up PT./Time	
HC1 SALMON RIVER IHC C-6		07/09	GEORGE CORREA	20	LAVA ICP/0600	LAVA ICP/1800	
HC2I GFP ENTERPRISES 15D C-15		07/01	TORI MASON	20	LAVA ICP/0600	LAVA ICP/1800	
HC2I GFP 15C C-29		07/13	JASON CAMPBELL	20	LAVA ICP/0600	LAVA ICP/1800	
WFM2 GRASS LAKE KNF O-2		07/09	WILLIAM JOHNSON	7	LAVA ICP/0600	LAVA ICP/1800	
ES3 S/T LNF 3615C E-33		07/10	BRIAN MARTIN	27	LAVA ICP/0600	LAVA ICP/1800	
ENG3 SQF 332 E-74		07/13	DALTON WORKMAN	5	LAVA ICP/0600	LAVA ICP/1800	
ENG3 SNF 314 E-73		07/12	RIGOBERTO TORRES	5	LAVA ICP/0600	LAVA ICP/1800	
WTT1 XTR 2141 E-101		07/12	TODD CORBETT	2	LAVA ICP/0600	LAVA ICP/1800	
DOZ3 CATTANEO ANGELO E-122		07/13	MIKE GORDON	2	LAVA ICP/0600	LAVA ICP/1800	
DOZ3 COTTONWOOD EQUIPMENT E-124		07/13	COLTON HILL	4	LAVA ICP/0600	LAVA ICP/1800	
WTT1 MRO 5490 E-103		07/12	SHAWN JOHNSON	2	LAVA ICP/0600	LAVA ICP/1800	
WTT1 SON 3392 E-104		07/12	JASON CAMPBELL	2	LAVA ICP/0600	LAVA ICP/1800	
WTT2 LNF 3 E-7		07/10	HENRY CASE	2	LAVA ICP/0600	LAVA ICP/1800	
WTS2 PRO-DUMP E-31		07/10	MIKE SEABOURNE	1	LAVA ICP/0600	LAVA ICP/1800	
WTS2 LENAHAN E-83		07/13	HANK SPURLOCK	1	LAVA ICP/0600	LAVA ICP/1800	
WTS3 COTTONWOOD EQUIPMENT E-29		07/10	RICHIE VARGAS	1	LAVA ICP/0600	LAVA ICP/1800	
WTS3 ALAN'S WATER TRUCK E-28		07/10	ALAN WHARFF	1	LAVA ICP/0600	LAVA ICP/1800	
EMTF O-90		07/12	DUSTIN KUNTZ	1	LAVA ICP/0600	LAVA ICP/1800	
EMTF O-93		07/12	MATT BAKER	1	LAVA ICP/0600	LAVA ICP/1800	
<b>8. Division/Group Communication Summary</b>							
Function	Channel	RX Frequency N/W	RX Tone/NAC	TX Frequency N/W	TX Tone/NAC	Mode	
COMMAND	1 (SHFR)	171.5750	15 (162.2)	165.0125	15 (162.2)		
TACTICAL	8 (NIFC TAC5)	166.7250		166.7250			
AIR TO GROUND	13 (A/G TAC)	169.1500		169.1500			
<b>9. Prepared By (Resource Unit Leader)</b>			<b>Approved By (Planning Section Chief)</b>			<b>Date</b>	<b>Time</b>
SHANNON SOLIS <i>Ssolis</i>			ARTIE COLSON <i>Artie Colson</i>			06/30/2021	2200



## Division/Group Assignment List (ICS 204 WF)

Controlled Unclassified Information//Basic

<b>1. Incident Name:</b>				<b>3.</b>			
LAVA				<b>Branch:</b>		<b>Division/Group</b>	
<b>2. Operational Period:</b> <b>DAY</b>				<b>V</b>		<b>T</b>	
Date/Time From: 07/01/2021 0600                      THU		Date/Time To: 07/01/2021 1800                      THU					
<b>4. Operations Personnel</b>							
<b>OPERATIONS CHIEF</b>		JEFF HINSON CHANCE TRAUB (T)		<b>BRANCH DIRECTOR</b>		SHAWN RALEY	
<b>DIVISION/GROUP SUPERVISOR</b>		LARRY TURNMAN					
<b>5. Resources Assigned this Period</b>							
Strike Team / Task Force / Resource Designator		LWD	Leader	Number Persons	Drop Off PT./Time	Pick Up PT./Time	
S/T 3800C					LAVA ICP/0600	FIRELINE/1800	
S/T 9143C					LAVA ICP/0600	FIRELINE/1800	
S/T 9212C					LAVA ICP/0600	FIRELINE/1800	
S/T 3225C					LAVA ICP/0600	FIRELINE/1800	
DOZ E-4					LAVA ICP/0600	FIRELINE/1800	
DOZ2 SKU 2640 E-4					LAVA ICP/0600	FIRELINE/1800	
DOZ E-13					LAVA ICP/0600	FIRELINE/1800	
WT E-31					LAVA ICP/0600	FIRELINE/1800	
WT E-32					LAVA ICP/0600	FIRELINE/1800	
WT E-25					LAVA ICP/0600	FIRELINE/1800	
WT E-10009					LAVA ICP/0600	FIRELINE/1800	
<b>6. Control Operations/Work Assignments:</b>							
Continue line construction and mop up.							
<b>7. Special Instructions:</b>							
All hired equipment passing through evacuated areas with staffed road closures will be required to present a current Lava Fire Access Pass. Divisions will distribute the passes at briefing breakouts. Do not display, give away, or transfer your pass! Write your E# on the pass and present it to law enforcement when requested.							
<b>8. Division/Group Communication Summary</b>							
Function	Channel	RX Frequency N/W	RX Tone/NAC	TX Frequency N/W	TX Tone/NAC	Mode	
COMMAND	1 (SHFR)	171.5750	15 (162.2)	165.0125	15 (162.2)		
TACTICAL	11 (CDF TAC24)	151.3325	16 (192.8)	151.3325	16 (192.8)		
AIR TO GROUND	13 (A/G TAC)	169.1500		169.1500			
<b>9. Prepared By (Resource Unit Leader)</b>				<b>Approved By (Planning Section Chief)</b>		<b>Date</b>	<b>Time</b>
SHANNON SOLIS <i>Ssolis</i>				ARTIE COLSON <i>Artie Colson</i>		06/30/2021	1455

**Division/Group Assignment List (ICS 204 WF)**  
**Controlled Unclassified Information//Basic**

<b>1. Incident Name:</b>		<b>3.</b>	
LAVA		<b>Branch:</b>	<b>Division/Group</b>
<b>2. Operational Period:</b> DAY		V	Z
Date/Time From: 07/01/2021 0600 THU	Date/Time To: 07/01/2021 1800 THU		

4. Operations Personnel			
<b>OPERATIONS CHIEF</b>	JEFF HINSON CHANCE TRAUB (T)	<b>BRANCH DIRECTOR</b>	SHAWN RALEY
<b>DIVISION/GROUP SUPERVISOR</b>	SHAWN RALEY		

5. Resources Assigned this Period					
Strike Team / Task Force / Resource Designator	LWD	Leader	Number Persons	Drop Off PT./Time	Pick Up PT./Time
S/T 3151C				LAVA ICP/0600	LAVA ICP/1800
S/T 9222C				LAVA ICP/0600	LAVA ICP/1800
S/T 9121C				LAVA ICP/0600	LAVA ICP/1800
S/T 9440C				LAVA ICP/0600	LAVA ICP/1800
S/T 9220G				LAVA ICP/0600	LAVA ICP/1800
S/T 9252C				LAVA ICP/0600	LAVA ICP/1800
WT 29				LAVA ICP/0600	LAVA ICP/1800
WTS2 DIETZ EQUIPMENT E-30	07/10	THOMAS CLUP	1	LAVA ICP/0600	LAVA ICP/1800
WTS3 PJ AND R E-27	07/10	PAUL YOKOYAMA	1	LAVA ICP/0600	LAVA ICP/1800
WT 10018				LAVA ICP/0600	LAVA ICP/1800
WT E-28				LAVA ICP/0600	LAVA ICP/1800
DOZ E-13				LAVA ICP/0600	LAVA ICP/1800
WTT1 SSL 23 E-105	07/12	SHAWN EHRENBERG	2	LAVA ICP/0600	LAVA ICP/1800
HEQB O-10013		DAN BONFANTE	1	LAVA ICP/0600	LAVA ICP/1800

**6. Control Operations/Work Assignments:**  
 Continue line construction and mop up.

**7. Special Instructions:**  
 All hired equipment passing through evacuated areas with staffed road closures will be required to present a current Lava Fire Access Pass. Divisions will distribute the passes at briefing breakouts. Do not display, give away, or transfer your pass! Write your E# on the pass and present it to law enforcement when requested.

8. Division/Group Communication Summary						
Function	Channel	RX Frequency N/W	RX Tone/NAC	TX Frequency N/W	TX Tone/NAC	Mode
COMMAND	1 (SHFR)	171.5750	15 (162.2)	165.0125	15 (162.2)	
TACTICAL	12 (CDF TAC25)	159.2775	16 (192.8)	159.2775	16 (192.8)	
AIR TO GROUND	13 (A/G TAC)	169.1500		169.1500		

<b>9. Prepared By (Resource Unit Leader)</b>	<b>Approved By (Planning Section Chief)</b>	<b>Date</b>	<b>Time</b>
SHANNON SOLIS <i>Solis</i>	ARTIE COLSON <i>Artie Colson</i>	06/30/2021	1455

**Division/Group Assignment List (ICS 204 WF)**  
 Controlled Unclassified Information//Basic

<b>1. Incident Name:</b>		<b>3.</b>	
LAVA		<b>Branch:</b>	<b>Division/Group</b>
<b>2. Operational Period: DAY</b>			
Date/Time From: 07/01/2021 0600 THU	Date/Time To: 07/01/2021 1800 THU	<b>CONTINGENCY</b>	

4. Operations Personnel			
<b>OPERATIONS CHIEF</b>	JEFF HINSON CHANCE TRAUB (T)	<b>BRANCH DIRECTOR</b>	
<b>DIVISION/GROUP SUPERVISOR</b>			

5. Resources Assigned this Period					
Strike Team / Task Force / Resource Designator	LWD	Leader	Number Persons	Drop Off PT./Time	Pick Up PT./Time

**6. Control Operations/Work Assignments:**

**7. Special Instructions:**

All hired equipment passing through evacuated areas with staffed road closures will be required to present a current Lava Fire Access Pass. Divisions will distribute the passes at briefing breakouts. Do not display, give away, or transfer your pass! Write your E# on the pass and present it to law enforcement when requested.

8. Division/Group Communication Summary						
Function	Channel	RX Frequency N/W	RX Tone/NAC	TX Frequency N/W	TX Tone/NAC	Mode
COMMAND						
TACTICAL						
LOGISTICS						
AIR TO GROUND						

<b>9. Prepared By (Resource Unit Leader)</b>	<b>Approved By (Planning Section Chief)</b>	<b>Date</b>	<b>Time</b>
ANSLEY SINGER	ARTIE COLSON	06/30/2021	2200

### AIR OPERATIONS SUMMARY ICS-220

<b>Incident Name and Incident Number</b> Lava CA-SHF-0949	<b>Sunrise</b> 539	<b>Startup</b>	<b>Cutoff</b>	<b>Sunset</b> 2047	<b>Time Prepared</b> 1730	<b>Date Prepared</b> Wednesday, June 30, 2021	<b>Prepared By</b> Staci Dickson
<b>General Remarks, Safety Notes, Hazards, Air Operations Special Equipment, etc.</b> TRACK ALL DIPSITE LOCATIONS / NUMBER OF DIPS / GALLONS TAKEN TRACK ALL DROP LOCATIONS / NUMBER OF DROPS / GALLONS DROPPED ALL GPS DATA TO BE COLLECTED IN DEGREES, MINUTES, DECIMAL MINUTES, FORMAT. AVOID Aerial Application of Retardant / Foam / Agent within 300' of Waterways, Bodies of Water, etc. If Retardant / Foam / Agent is Dropped Within These Areas Immediately Notify the AOB and Provide the Following Information: Lat / Long, Estimated Number of Gallons and a Map Detailing The Area.				<b>Operational Period - Date</b> Thursday, July 1, 2021		<b>Operational Period - Time</b> 0700-2100	

<b>Helibase Information</b> Name LAVA Latitude 41° 15.87 Longitude 122° 16.34  Name SISKIYOU Latitude 41° 46.16' Longitude 122° 28.64' (use page 2, if needed)	<b>TFR Information</b> Request # A- Radius: POLYGON NM Altitude: 12000' MSL Centerpoint: Lat Long NOTAMS: 1/2923 Frequency 120.025 <a href="http://tfr.faa.gov/tfr2/dist.html">http://tfr.faa.gov/tfr2/dist.html</a>
--	---

FAA #	Type	Make/Model	Helibase	Avail	Start	Remarks / A - #
8AC	1	S-64	LAVA	700	800	
73U	1	S-61	LAVA	700	800	
H506	2	205++	LAVA	700	800	
82D	2	UH-1F	LAVA	700	800	
H517	2	212HP	LAVA	700	800	
H509	2	BELL 109	LAVA	700	800	
3JR	3	AS-350-B3E	LAVA	700	800	
2JG	3	Bell L3	LAVA	700	800	

FAA #	Type	Make/Model	Helibase	Avail	Start	Remarks / A - #
		BV-234	SISKIYOU	700	800	
		S-64	SISKIYOU	700	800	
		UH-60	SISKIYOU	700	800	
		UH-60	SISKIYOU	700	800	
		S-64	SISKIYOU	700	800	
		S-64	SISKIYOU	700	800	
		212HP	SISKIYOU	700	800	

FAA #	Type	Make/Model	Base	Avail	Start	Remarks
AA 50		REDDING		800	900	Primary AA


Mission	Aircraft	Start Time	Departure Point	Destination
WATER DROPPING				
RECON				AS REQUESTED
RETARDANT				AS REQUESTED

**Notes:** WATER TENDERS ASSIGNED TO DIPSITE: E-23,E-24,E-25,E-26,E-30 CRASH RESCUE E-32 at Lava Helibase  
WATER TENDER assigned to Siskiyou Helibase: E-138  
FIREWATCH GOES ON MAINTENANCE PHASE FOR A FEW DAYS



# INCIDENT RADIO COMMUNICATIONS PLAN (ICS 205)

## Controlled Unclassified Information//Basic

<b>1. Incident Name:</b>		<b>2. Date/Time Prepared:</b>		<b>3. Operational Period:</b>		<b>DAY</b>					
LAVA		Date: 06/30/2021 Time: 1455		Date/Time From: 07/01/2021 0600 THU		Date/Time To: 07/01/2021 1800 THU					
<b>4. Basic Radio Channel Use:</b>											
Zone Group	Ch #	Function	Channel Name/Trunked Radio System Talkgroup	Assignment	RX Freq	RX Tone/NAC	TX Freq	TX Tone/NAC	Mode (A, D, or M)	Remarks	
1	1	COMMAND	SHFR	COMMAND	171.5750		165.0125	15(162.2)	A		
1	2	COMMAND	NIFC C1	NOT IN USE	170.9750	1(110.9)	168.7000	1(110.9)	A	NOT IN USE	
1	3	COMMAND	NIFC C9	NOT IN USE	170.0125	1(110.9)	165.2500	1(110.9)	A	NOT IN USE	
1	4	COMMAND	NIFC C29	NOT IN USE	171.5375	1(110.9)	164.8625	1(110.9)	A	NOT IN USE	
1	5	TACTICAL	NIFC TAC 2	I/A ONLY	168.2000		168.2000		A	I/A Only	
1	6	TACTICAL	NIFC TAC 1	DIV A	168.0500		168.0500		A	Branch 1	
1	7	TACTICAL	NIFC TAC 3	DIV E / CONTINGENCY	168.6000		168.6000		A	Branch 1 / DIV E, Contingency	
1	8	TACTICAL	NIFC TAC 5	DIV R	166.7250		166.7250		A	Branch 3	
1	9	TACTICAL	NIFC TAC 6	DIV N	166.7750		166.7750		A	Branch 3	
1	10	TACTICAL	NIFC TAC 7	DIV P	168.2500		168.2500		A	Branch 3	
1	11	TACTICAL	CDF TAC 24	DIV T	151.3325	16(192.8)	151.3325	16(192.8)	A	Branch 5	
1	12	TACTICAL	CDF TAC 25	DIV Z	159.2775	16(192.8)	159.2775	16(192.8)	A	Branch 5	
1	13	AIR TO GROUND	A/G TAC	ALL DIVS	169.1500		169.1500		A		
1	14	AIR TO GROUND	A/G CMD	ALL DIVS	167.9500		167.9500		A	Div/Branch use with Air	
1	15	TACTICAL	CALCORD	ALL DIVS	156.0750	6(156.7)	156.0750	6(156.7)	A	Medical	
1	16	AIR GUARD	AIR GUARD	ALL DIVS	168.6250		168.6250	1(110.9)	A	Emergency Use Only	
<b>5. Special Instructions:</b>											
<b>6. Prepared By</b>				Name: JOE MEHCIZ, COM1 661-332-7608				Signature: 			
(Communications Unit Leader)				IAP Page				Date/Time: 06/30/2021 1455			
ICS 205											

# HEALTH AND SAFETY MESSAGE

**SAFETY** starts with **YOU**

We are **ALL** accountable for **SAFE** behaviors

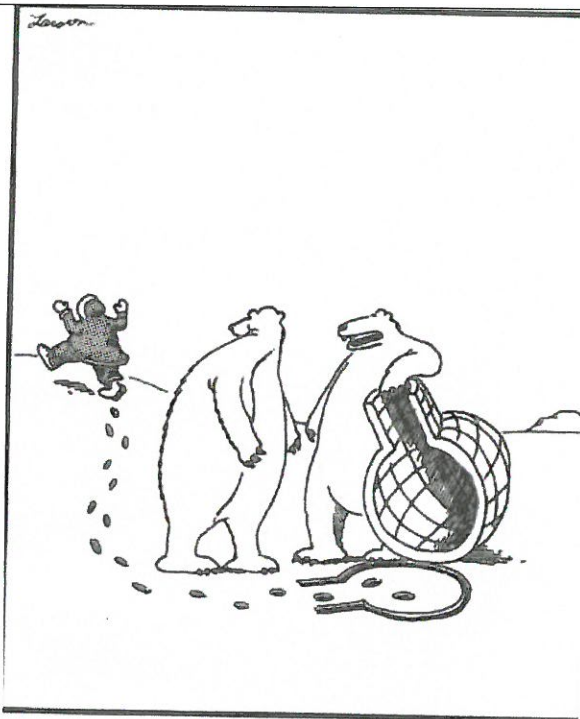
July 1, 2021

INCIDENT: Lava

Day Operations

## Major Hazards and Risks:

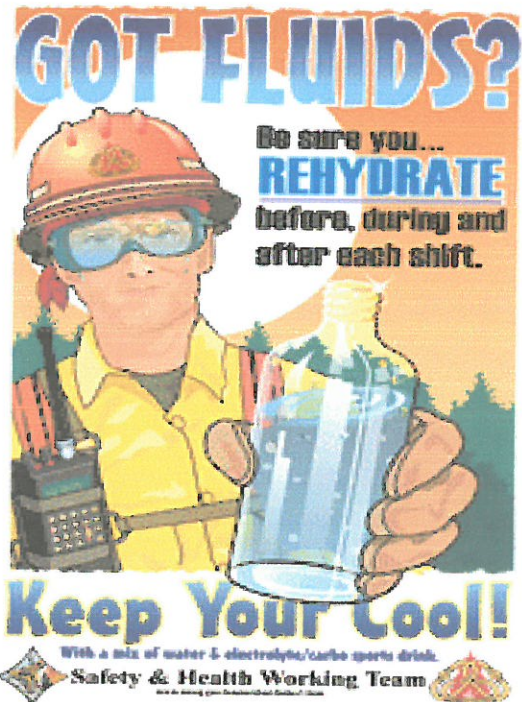
- **Marijuana Grows:** Do not enter areas unless there is a police presence, and be aware toxic chemicals may be present.
- **Lava Beds:** Work slowly and **ALWAYS** wear your gloves. If you trip and fall your hands will have some protection from the lava rock.
- **Hazard Trees:** Assess ALL Trees in Work Areas....In addition to suppression and mop-up operations, assess hazard trees when you take breaks and park vehicles. Check out your IRPG pgs. 22-23.
- **Driving:** Practice “defensive driving” and always use headlights and observe posted speed limits.



“I lift, you grab. ... Was that concept just a little too complex, Carl?”

**Give clear instructions and insure they are understood!!!**

## HYDRATE YOURSELF!



- Take 6 quarts of water to the line
- Cache extra water ahead on the line
- Recognize dehydration symptoms

**Thanks from your Safety Team!!**

Greg Marfil, Nick Bianchini, Pedro Martinez

*Greg Marfil* SOF2

Use the Risk Management Process in all your decision making.....IRPG page 1

BR/DIV	HAZARDOUS ACTIONS/CONDITIONS	MITIGATIONS/WARNINGS/REMEDIES
All	Lava Beds	<ul style="list-style-type: none"> <li>• Slow down, and be sure of where you are stepping.</li> <li>• Wear gloves at all times to protect your hands from the sharp lava rock.</li> <li>• Flag and identify vertical tubes.</li> <li>• Be cautious when driving through lava beds.</li> </ul>
All	Hazard Trees	<ul style="list-style-type: none"> <li>• Follow "Hazard Tree Safety" guidelines, IRPG pages 22-23.</li> <li>• Post lookouts, or use a spotter in mop-up areas with personnel.</li> <li>• Don't park vehicles or take breaks in high concentrations of hazard trees.</li> <li>• Establish trigger points for disengagement during high wind events.</li> <li>• Remember that the hazard zone extends a minimum of 2 1/2 tree heights.</li> <li>• Post road guards when appropriate.</li> </ul>
All	Air Operations	<ul style="list-style-type: none"> <li>• Follow "Aviation Watch-Out Situations" on page 46, IRPG.</li> <li>• Don't plan on air resources for medical transport or resupply.</li> <li>• Refer to page 58, IRPG for directing bucket drops.</li> <li>• Ensure positive communication with all air resources.</li> <li>• Ensure Drone Operations are coordinated with air resources</li> </ul>
All	Steep Terrain & Rolling Debris	<ul style="list-style-type: none"> <li>• Maintain 8-10' spacing when working and walking.</li> <li>• Don't work above any personnel.</li> <li>• Be on the lookout for rolling rocks, debris, or burning material.</li> </ul>
All	Power Utilities	<ul style="list-style-type: none"> <li>• Refer to the IRPG pages 24-25 for Power Line Safety.</li> <li>• Notify all personnel of down electrical lines.</li> <li>• Always treat downed wires as energized.</li> <li>• Identify and avoid high tension transmission lines.</li> </ul>
All	Heat Related Injury (HRI)& Dehydration	<ul style="list-style-type: none"> <li>• Drink Fluids throughout operational period (6-8 quarts/shift).</li> <li>• Maintain water/electrolyte ratio of 3 to 1.</li> <li>• Carry extra water on line and cache water at drop points.</li> <li>• Take frequent breaks, minimum of 10 minutes every hour.</li> <li>• Allow out of area resources to acclimate before expecting peak performance.</li> <li>• Recognize symptoms of <b>HEAT RELATED INJURY</b>.</li> </ul>
All	Extended Medical Extraction Times	<ul style="list-style-type: none"> <li>• Identify helispots and communicate Lats/Longs to DIVS.</li> <li>• Be familiar with the Medical Plan and communicate 8 line promptly.</li> <li>• Evaluate the necessity to send personnel into areas with limited access.</li> <li>• Be aware of weather conditions (i.e. smoke inversions, high winds etc.), that could affect the ability of helicopters to reach you.</li> <li>• Don't rely on helicopters exclusively.</li> </ul>
T & Z	Marijuana Grows	<ul style="list-style-type: none"> <li>• Do not enter areas unless there is a law enforcement presence.</li> <li>• Be aware of the presence of toxic chemicals.</li> <li>• Local criminal elements and organized crime can be involved in the organization.</li> <li>• Anti-Personnel Devices (APD) may be present.</li> </ul>
All	COVID-19 Environment	<ul style="list-style-type: none"> <li>• Utilize social distancing (6 feet). Wear a facemask if you can't social distance.</li> <li>• Maintain the "module of one" concept.</li> <li>• Disinfect vehicle interiors, and commonly touched surfaces frequently.</li> <li>• Do not share devices (i.e. cellphones, laptops, radios etc.).</li> <li>• Utilize technology to communicate while maintaining social distance.</li> <li>• Wash your hands frequently.</li> </ul>

Incident Name:

Lava

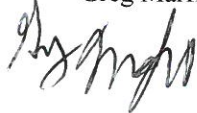
Operational Period: Day

July 1, 2021

OSC2:  
Jeff Hinson/Alec lane



SOF2:  
Greg Marfil

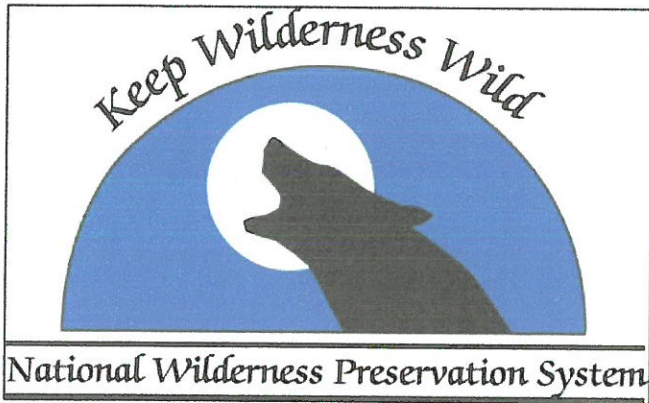


Date and Time Prepared:

June 30th, 2021 1600 Hours



## MINIMUM IMPACT SUPPRESSION TECHNIQUES (MIST) – “Do the least damage”



Firefighter and public safety is always the first priority in any suppression action, including operations in wilderness. Use of MIST provides guidelines for preserving wilderness areas for present and future generations.

When evaluating fire management actions, the potential degradation of wilderness character should be considered before, and given significantly more weight than, economic efficiency, and convenience. Unless human life or private property is immediately threatened, only those actions that preserve wilderness character and/or have localized, short-term adverse impacts to wilderness character should be implemented.

# MOUNT SHASTA WILDERNESS

## FIRELINE CONSTRUCTION

- Take advantage of natural barriers wherever possible.
- Use cold-trail and/or wet line when appropriate.
- If the decision is made to construct line, use only the width and depth necessary for halting the fire spread. Minimize ground disturbance.
- Minimize bucking and cutting of trees to establish fire line; build line around logs when feasible and effective.
- Limb vegetation only to the extent necessary to stop fire spread.
- Avoid cutting live trees whenever possible.
- As an alternative to felling, consider allowing ignited trees and snags to burn themselves out. Ensure adequate safety measures are communicated to those affected by this decision.
- If burning trees or snags pose a serious threat of spreading firebrands, extinguish the fire with water and/or dirt wherever possible.
- Use cross cut saws unless use of chain saws is approved.

## AIR OPERATIONS

- Limit retardant or foam use, use water instead. If retardant and foam is appropriate, avoid drops near water.
- Minimize the number of helispots in wilderness. Use alternate sites outside wilderness. Use natural openings as much as possible.
- Size the helispots for the appropriate size helicopter. Consider long line remote hook operations instead of helispots for logistical support.

## REHABILITATION

- Remove signs of human activity. Remove signs, flagging, garbage, and equipment.
- Restore disturbed areas.
- Scarify the top 2-4" of soil in heavily compacted areas and scatter needles, twigs, branches, over the area.
- Rehabilitate newly established trails on slopes <6%, water bar trails created on steeper slopes.
- Scatter cut material and camouflage cut surfaces with dirt.
- Do not use non-native materials, avoid introducing invasive species.



## ***Lava Fire Incident Training Program***

A TNSP is assigned to this incident and will be performing the majority of duties "virtually".

To receive documented credit for your assignment, scan the QR Code or click on the link below to access and complete the Trainee Registration Form. Once registered you will receive additional instructions via text. For training related questions, call Brad Smith (TNSP) at 209-770-4809 or email [bradley\\_smith@firenet.gov](mailto:bradley_smith@firenet.gov)



[Lava Fire - Trainee Registration Form](#)

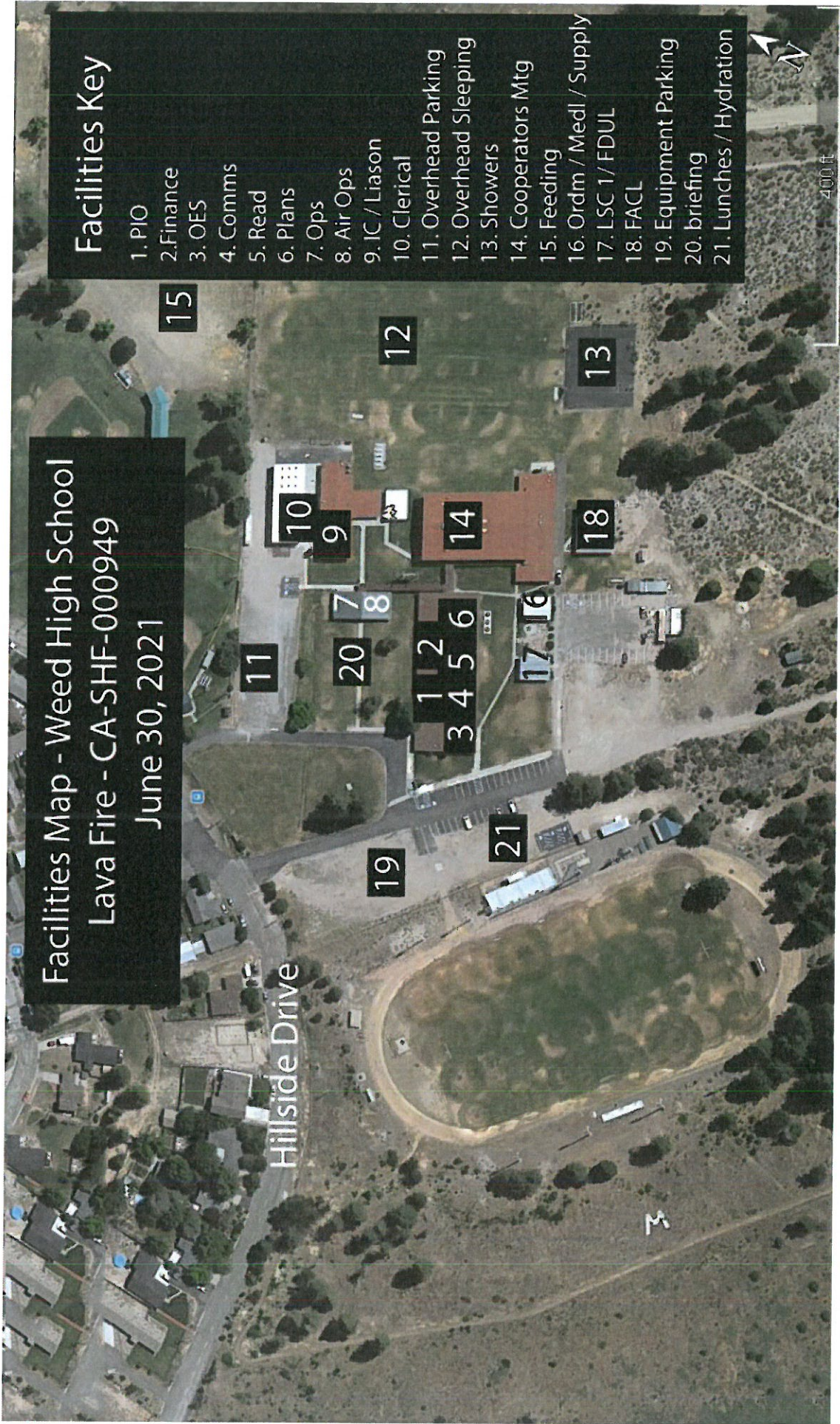
Facilities Map - Weed High School  
Lava Fire - CA-SHF-000949  
June 30, 2021

Hillside Drive

- ### Facilities Key
- 1. PIO
  - 2. Finance
  - 3. OES
  - 4. Comms
  - 5. Read
  - 6. Plans
  - 7. Ops
  - 8. Air Ops
  - 9. IC / Liason
  - 10. Clerical
  - 11. Overhead Parking
  - 12. Overhead Sleeping
  - 13. Showers
  - 14. Cooperators Mtg
  - 15. Feeding
  - 16. Ordsm / Medl / Supply
  - 17. LSC 1 / FDUL
  - 18. FACL
  - 19. Equipment Parking
  - 20. briefing
  - 21. Lunches / Hydration

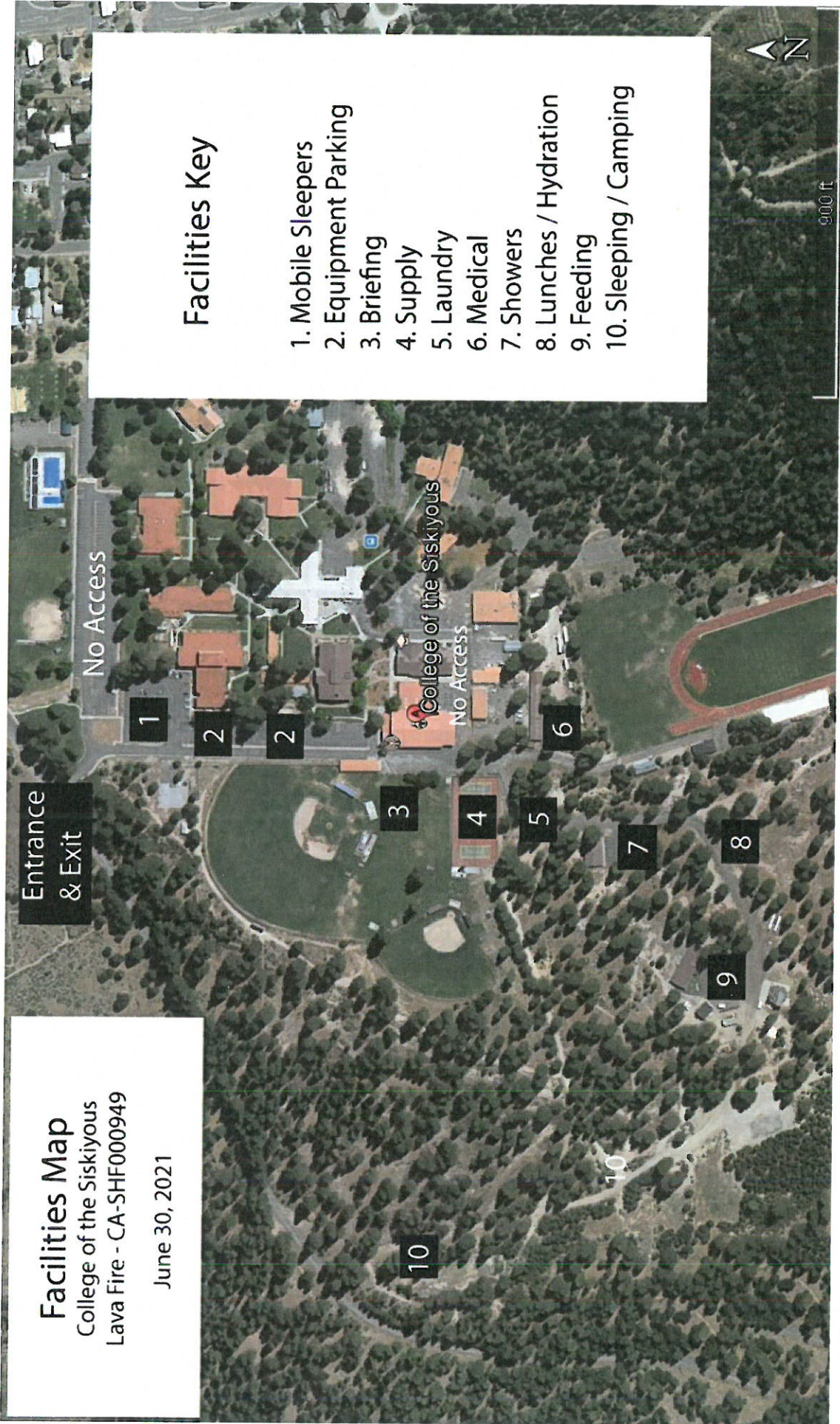


400 ft



**Facilities Map**  
College of the Siskiyous  
Lava Fire - CA-SHF000949

June 30, 2021



**Facilities Key**


- 1. Mobile Sleepers
- 2. Equipment Parking
- 3. Briefing
- 4. Supply
- 5. Laundry
- 6. Medical
- 7. Showers
- 8. Lunches / Hydration
- 9. Feeding
- 10. Sleeping / Camping

900 ft







1. Incident Name		2. Operational Period					
Lava Incident		Date/Time: 7/01/2021 - 7/01/2021 (0600-1800)					
3. EMS / Ambulance Services/Aid Stations/REMS							
Name	Location	Frequency/Phone	Advanced Life Support (ALS) Yes No				
Mountain Medics 4x4 ALS Ambulance (24 hours)	DP 1	Command	X				
Mountain Medics Rapid Extraction Module Support (REMS)	Reference 204 for REMS Location	Command	X				
Mt. Shasta Ambulance	1020 Oak St. Mt. Shasta, CA 96067	Redding ECC	X				
4. Air Rescue / Air Ambulance Services							
Name	Location	Type of Aircraft & Capability					
Helicopter 3JR	Lava Helibase	Type 3, BLS, Shorthaul (Daytime Only)					
PHI Air Medical	Redding, CA (530) 221-0646	Type 3 Air Ambulance, ALS					
Reach 5	Redding, CA (800) 252-5050	Type 3 Air Ambulance, ALS					
CHP H14/H16	Redding, CA (530) 225-2040	Type 3, ALS, Hoist (Day Time Only)					
Coast Guard	Arcadia, CA (707) 839-6100	Type 2, ALS, Hoist (Night)					
5. Hospitals (all times estimated from incident location)							
Name & Level	GPS Datum – WGS 84 Degrees Decimal Minutes		Travel Time Air Ground		Phone	Helipad Yes No	Address
Mercy Mt. Shasta Medical Center (Level 3 Trauma)	Lat:	N 41° 19.117	5 MINS	20 MINS	(530) 926-6111	X	914 Pine St. Mt. Shasta, CA
	Long:	W 122° 19.203					
Fairchild Medical Center (Level 4 Trauma)	Lat:	N 41° 43.164	10 MINS	35 MINS	(530) 842-4121	X	444 Bruce Street Yreka, CA
	Long:	W 122° 38.741					
Shasta Regional Medical Center (Level 3 Trauma)	Lat:	N 40°53.72	20 MINS	1.25 HRS	(530) 244-5400	X	1100 Butte St. Redding, CA
	Long:	W 124°05.45					
Mercy Medical Center Redding (Level 2 Trauma)	Lat:	N 40°34.33	20 MINS	1.25 HRS	(530) 225-6000	X	2175 Rosaline Ave. Redding CA
	Long:	W 122°23.80					
U.C. Davis Medical Center (Level 1 Trauma/Burn)	Lat:	N 38°33.293	1.75 HRS	3.5 HRS	(916) 734-3636	X	2315 Stockton Blvd. Sacramento, CA
	Long:	W 121°27.317					
6. Division / Crew Emergency Pre-Plan <i>Update and discuss with assigned resources daily.</i>							
Fireline EMT / Medic's Division / Branch Location							
Air Hoist site location site: Lat: / Long: / Elevation:							
Helispot: Lat: / Long: / Elevation:							
7. Prepared By (Medical Unit Leader)		8. Date/Time	9. Reviewed By (Safety Officer)		10. Date/Time		
Mickey Brunelli, MEDL 		6/30/2021 2000	Greg Marfil, SOF2		6/30/2021 2000		

### Medical Incident Report

FOR A **NON-EMERGENCY INCIDENT**: WORK THROUGH CHAIN OF COMMAND TO REPORT AND TRANSPORT INJURED PERSONNEL AS NECESSARY.

FOR A **MEDICAL EMERGENCY**: IDENTIFY ON SCENE INCIDENT COMMANDER BY NAME AND POSITION AND ANNOUNCE **"MEDICAL EMERGENCY"** TO INITIATE RESPONSE FROM COMMUNICATIONS

**Use the following items to communicate situation to communications/dispatch.**

**1. CONTACT COMMUNICATIONS / DISPATCH** (Verify correct frequency prior to starting report)

*Ex: "Communications, Div. Alpha. Stand-by for Emergency Traffic."*

**2. INCIDENT STATUS:** Provide incident summary (including number of patients) and command structure.

*Ex: "Communications, I have a Red priority patient, unconscious, struck by a falling tree.*

*Requesting air ambulance to Forest Road 1 at (Lat./Long.)*

*"This will be the Trout Meadow Medical Incident, IC is TFLD Jones. EMT Smith is providing medical care."*

Severity of Emergency AND Transport Priority (priority 1, 2, 3)	<input type="checkbox"/> <b>RED / PRIORITY 1</b> Life or limb threatening injury or illness. Evacuation need is <b>IMMEDIATE</b> <i>Ex: Unconscious, difficulty breathing, bleeding severely, 2° – 3° burns more than 4 palm sizes, heat stroke, disoriented.</i>	
	<input type="checkbox"/> <b>YELLOW / PRIORITY 2</b> Serious Injury or illness. Evacuation may be <b>DELAYED</b> if necessary. <i>Ex: Significant trauma, unable to walk, 2° – 3° burns not more than 1-3 palm sizes.</i>	
	<input type="checkbox"/> <b>GREEN / PRIORITY 3</b> Minor Injury or illness. <b>Non-Emergency transport</b> <i>Ex: Sprains, strains, minor heat-related illness.</i>	
Nature of Injury or Illness & Mechanism of Injury		Brief Summary of Injury or Illness <i>(Ex: Unconscious, Struck by Falling Tree)</i>
Transport Request		Air Ambulance / Short Haul/Hoist Ground Ambulance / Other
Patient Location		Descriptive Location & Lat. / Long. (WGS84)
Incident Name		Geographic Name + "Medical" <i>(Ex: Trout Meadow Medical)</i>
On-Scene Incident Commander		Name of on-scene IC of Incident within an Incident <i>(Ex: TFLD Jones)</i>
Crew Patient Care		Name of Care Provider <i>(Ex: EMT Smith)</i>

**3. INITIAL PATIENT ASSESSMENT:** Complete this section for each patient as applicable (start with the most severe patient)

Patient Assessment: (IRPG PAGE 106)      Age:      Weight:      Chief Complaint:

Skin Signs: (color/moisture/temp)      Level of Consciousness:      BP:      HR:      Respirations:

Treatment:

**4. TRANSPORT PLAN:**

Evacuation Location (drop point, intersection, helispot, Lat. / Long, hazards)      Patient's ETA to Location:

**5. ADDITIONAL RESOURCES / EQUIPMENT NEEDS:**

*Paramedic / EMT - Crews - Immobilization Devices - AED - Oxygen - Trauma Bag - IV/Fluid(s) - Splints - Rope rescue - Wheeled litter - HAZMAT - Extrication*

**6. COMMUNICATIONS:** Identify State Air/Ground EMS Frequencies and Hospital Contacts as applicable

Function	Channel Name/Number	Receive (RX)	Tone/NAC *	Transmit (TX)	Tone/NAC *
COMMAND					
AIR-TO-GRND					
TACTICAL					

**7. CONTINGENCY:** *Considerations: If primary options fail, what actions can be implemented in conjunction with primary evacuation method? Be thinking ahead.*

**8. ADDITIONAL INFORMATION:** *Updates/Changes, etc.*

**REMEMBER: Confirm ETA's of resources ordered. Act according to your level of training  
Be Alert - Keep Calm - Think Clearly - Act Decisively  
\*\*\* Follow up with MEDL upon return to ICP \*\*\***