



# INCIDENT ACTION PLAN

OPERATIONAL PERIOD

7/4/2021 0600 – 7/5/2021 0600

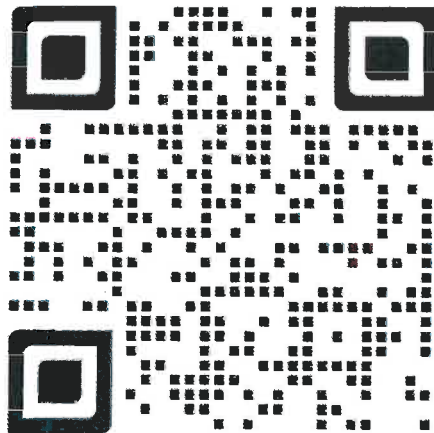
**Sunday**

MAPs

IAP'S

DMOB LIST

TRAINING CHECK-IN



## LAVA FIRE

CA-SHF-000949  
P5 N3XW (0514)



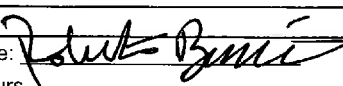
0600 – Day Shift Ops Briefing  
1700 – Planning Meeting  
1800 - Operations Briefing







## ORGANIZATION ASSIGNMENT LIST (ICS 203)

<b>1. Incident Name:</b> LAVA FIRE		<b>2. Operational Period: Date From:</b> 7/4/2021 Time From: 0600		<b>Date To:</b> 7/5/2021 <b>Time To:</b> 0600	
<b>3. Incident Commander(s) and Command Staff:</b>			<b>7. Operation Section:</b>		
IC/UC's	Jerry McGowan / Darryl Laws / Curtis Coots(t)	Operations	Chad Cook / Kerri Gilliland(t)		
Deputy	Ken Kempster	Planning Ops	Chris Childers / Shane Santos (t)		
Safety Officer	John Nickey / Doug McKelvey	Night Ops	Billy Steers		
Information Officer	Kristin Allison / Derek Tsigner	Staging Area			
Liaison Officer	Jake Fuller	<b>Branch</b>	<b>I</b>	<b>Travis Thane</b>	
<b>4. Agency/Organization Representatives:</b>		Division/Group	A	Daniel Guse/ Joshua Dominguez(t)	
Agency/Organization	Name	Division/Group	E	Rich Ingram / Mathew Muller(t)	
SHF Agency Admin	Carolyn Napper	Division/Group	CONTINGENCY EAST	Billy Covert	
CHP	Robert Lynam	Division/Group			
Timber Industries Lia	Darin Quigley	Division/Group			
Roseburg Forest	Ryan Duchi	<b>Branch</b>	<b>III</b>	<b>Peter Tolosano</b>	
Union Pacific RR	Gene Womack	Division/Group	N	Mike Carter / Jonathon Duncan(t)	
Lake Shatina FD	Steven Pappas	Division/Group	P/R	Juan Molve / John Hunt(t)/ Nolan Roth(t)	
Weed Fire	Brian Carter	Division/Group	CONTINGENCY WEST	Larry Turman	
Siskiyou County SO	Lt Ben Whetstine	Division/Group			
OES	Patrick Titus	Division/Group			
		<b>Branch</b>	<b>V</b>	<b>Kent Cunningham</b>	
		Division/Group	T/Z	Scott Irvine	
		Division/Group			
		Division/Group			
<b>5. Planning Section:</b>		Division/Group			
Chief	Robert Burnside	Division/Group			
Deputy	Carol O'Bryan	Division/Group			
Resource Unit	Danny Douglas / Gwyndolyn Ozard	Division/Group			
Situation Unit	Robert Verdie / Jonathon Pangburn	<b>Branch</b>	<b>NIGHT</b>		
Documentation Unit		Division/Group	A	Phillip Gerhardson	
Demobilization Unit	Brian Dameron	Division/Group	E	Abel Mata/Mike Anderson/Jason Obannon(t)	
GISS	James Roberts / M. Hans / S. Dinar(t)	Division/Group	N/P/R	Daniel Cedeno	
FBAN	Mike Beasley / Patrick Doyle (T)	Division/Group			
IMET	Eric Kurth	Division/Group			
Training Tech Spec	Bob Rivelle	<b>Air Operations Branch</b>		<b>Director:</b>	<b>Jason Nava</b>
ITTS	Ulysses Huerta / Jake Huerta	Air Support Group Supervisor		Tyler Detrick	
READ	Nick Meyers	Helibase Manager			
COVID Advisor	Melissa Ann Conway				
HR	Janine Summy				
<b>6. Logistics Section</b>					
Chief	Richie Davis / Dan Turner				
Supply Unit	Mani Bouslaugh	<b>8. Finance/Administration Section:</b>			
Facilities Unit	Nick Sablan	Chief			
Ground Support Unit	David Trussell	Time Unit	Renee Smith		
Communications Unit	Scott LaRue	Procurement Unit	Paul Wood		
Medical Unit	Rod Mascis / Brian Wisler	Comp/Claims Unit	Jodi Glover		
		Cost Unit	Lee Piper		
<b>Prepared By: Name:</b> Robert Burnside		<b>Position/Title:</b> PSC		<b>Signature:</b> 	
<b>ICS 203</b>		<b>Date/Time:</b> 7/3/2021 2300 hours			



## Fire Weather Forecast



**FORECAST NO:** 10  
**PREDICTION FOR:** 7/4-5/2021  
**SHIFT DATE:** Day & Night (0700-0700)  
**FORECAST ISSUED:** 1900 7/3/2021

**NAME OF FIRE:** Lava Fire  
**UNIT:** CA-SHF  
**SIGNED:** Eric C. Kurth,  
Incident Meteorologist  
[eric.kurth@noaa.gov](mailto:eric.kurth@noaa.gov) (240)-778-5292

---Hot, Dry and Unstable Weather...      ...Slight Chance of Afternoon and Evening Thunderstorms---

**WEATHER DISCUSSION:** Sunny with smoke and hazy conditions. Inversion will break mid-morning with smoke clearing around 1100. Winds are expected to be light and variable in the early morning, becoming south by mid-morning. These winds look less breezy than on Saturday, increase in the afternoon with gusts to 10 to 15 mph in the afternoon. Afternoon high temperatures will again be hot, though some cloud cover could decrease this slightly. Conditions will be unstable, with potential plume development in the afternoon. There could be an isolated shower or thunderstorm that develop in the afternoon and evening. The best potential for isolated thunderstorms is over any plume that develops. Gusty and erratic winds are possible with any thunderstorms that do form. General winds over the northern portion of the fire shift to northwest earlier than usual, around 17-19z. Winds decrease becoming downslope/down canyon winds after midnight. Morning low temperatures should be fairly mild and humidity recoveries moderate.

### **WEATHER FORECAST TODAY:**

**WEATHER:** Sunny early with areas of smoke becoming partly cloudy in the afternoon. Slight chance (10%) of an isolated thunderstorm.

**TEMPERATURES:** 95-98 valleys and 85-91 ridges.

**HUMIDITY:** 10-15 percent valleys and 20-30 percent ridges.

#### **20 FT WINDS:**

**UPPER SLOPE/RIDGETOP** – Light downslope winds becoming southwest 5 to 10 mph gusting up to 15 mph mid-afternoon, becoming southeast 2 to 5 mph by sunset for the southern portion of the fire. For the northern portion of the fire winds shift to the west northwest 5 to 10 mph with gusts to 17 mph in the early evening, starting around 1700 PDT.

**LOWER SLOPE/VALLEY** - Light downslope winds becoming southwest 5 to 10 mph with gusts to 16 mph in the afternoon. For the northern portion of the fire area winds shift to west northwest 4 to 8 mph around 1700 PDT.

**HAINES INDEX:** 5

LAL: 2

**STABILITY/INVERSION:** Morning inversion with smoke laying down, breaking around 1100 PDT.

### **WEATHER FORECAST TONIGHT:**

**WEATHER:** Partly cloudy with a slight chance of an isolated shower or thunderstorm in the evening.

**TEMPERATURES:** 62-67 valleys and 59-65 ridges.

**HUMIDITY:** 45-55 percent valleys and 40-50 percent ridges.

#### **20 FT WINDS:**

**UPPER SLOPE/RIDGETOP** - South winds 5 to 10 mph with gusts to 12 mph early evening. For the northern portion of the fire winds shift to the west north 5 to 10 mph with gusts to 15 mph in the early evening, starting around 1800 PDT. Winds overall decrease after 2200 PDT, becoming downslope 2 to 5 mph overnight.

**LOWER SLOPE/VALLEY** - South 5 to 8 mph with gusts to 15 mph early evening. For the northern portion of the fire area winds shift to northwest 5 to 10 mph with gusts to 18 mph in the early evening, starting around 1800 PDT. Winds overall decrease after 2100 PDT, becoming variable 1 to 4 mph overnight.

**HAINES INDEX:** 4

LAL: 2

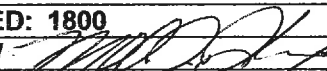
**STABILITY/INVERSION:** Inversion develops after midnight with smoke laying down.

**Outlook:** Hot and dry weather next week, with slightly less hot weather mid-week.

**Scan for current local weather observations:**



# FIRE BEHAVIOR FORECAST

FORECAST NUMBER: 11	TYPE OF FIRE: Wildfire
FIRE NAME: Lava	OPERATIONAL PERIOD: Day 0600 – 1800, 7/4/2021 Night 1800 - 0600, 7/4 - 5/2021
DATE ISSUED: July 3, 2021	TIME ISSUED: 1800
UNIT: Shasta Trinity NF, Mt. Shasta RD	SIGNED: /s/  Mike Beasley, FBAN

## INPUTS

### WEATHER SUMMARY

\*See IMET Weather Forecast\*

**Discussion:** Sunny with smoke and hazy conditions. Inversion will break midmorning with smoke clearing around 1100. Increasing afternoon winds with unstable conditions. 10% chance of an isolated thunderstorm. A brief shift to northwest winds over the northern portion of the fire in the evening around 17-1900 hrs. Winds decrease through late evening becoming downslope/downcanyon after midnight.

**Max. Daytime Temps:** 95-98° valleys, 85-92° ridges      **Min. Nighttime Temps:** 62-67° valleys, 59-65° ridges  
**Min Daytime RH:** 10-15% valleys and 20-30% ridges      **Max. Nighttime RH:** 45-55% valleys, 40-50% ridges  
**20' Winds:** Upper elevations: SW 5-10 mph w/ gusts to 15 mph. On northern portions of the fire, 5-10 mph winds shift out of the WNW starting around 1700, then decreasing to downslope 2-5 mph overnight after 2200 PDT. Lower elevations: SW 5-10 mph w/ gusts to 16 mph, becoming WNW 4-8 mph over northern portions of the fire starting around 1700 PDT. Winds overall decrease after 2100 PDT then becoming variable 1-4 mph overnight.

## FIRE BEHAVIOR

**GENERAL:** \*\*\*Any slopover or spot fires will burn very actively with potential plume domination late in the burn period. Haines Index = 5\*\*\*

**ERC is 72** (Mt. Shasta RAWS #40217)

- **Fuels:** Below average winter snowpack and very hot, dry windy conditions have created burning conditions one to two months ahead of average. Surface fuels consist of manzanita and shrubs with second growth ponderosa pine and mixed conifer in the overstory best represented by Scott and Burgan's SH5 and TL8 fuel models. ERC's and 1000-hour fuel moistures are *between the 90<sup>th</sup> and 97<sup>th</sup> percentile, setting records for dryness for this time of year.* 1000-hour dead fuel moistures are below 10% and live brush fuel moistures are near 100%.
- **Topography:** Aspect is primarily west and north on the rugged, lava flow flanks of Mt. Shasta. The elevation range is 2800' - 7800' and slopes range from 20 to 70%. The lava rock creates difficult access and a high resistance to control.

### SPECIFIC FIRE BEHAVIOR:

Be aware of interior islands that might burn causing torching and spotting outside control lines. If current lines hold, the following fire behavior would be for a spot fire or other slopover. Isolated and short duration crown fire runs in mixed conifer and shrub understory remain possible. Potential *daytime maximum headfire behavior* (reduce these numbers by approximately 1/2 for flanking fire and 3/4 for backing fire):

- Shrub: 8 - 30' flame lengths, 14 - 150 chs/hr rate of spread
- Mixed Conifer: 3 - 10' flame lengths, 6 - 35 chs/hr rate of spread
- Torching/short duration timber crownfire: 100 - 150' flame lengths, 90 chs/hr rate of spread
- Spotting distance up to 3/4 mile spotting distances with 70-92% probability of ignition

**DIV's P/R/T/Z:** Direct dozer and handlines continue to hold w/ additional mop-up. Escapes could spread toward Weed, Carrick and Lake Shastina.

**DIV's A/E:** This remains the most active portion of fire throughout the day under southwesterly and, briefly, northerly winds around 1800-2200 PDT. Lingering monsoonal moisture and instability could cause plume dominated fire behavior from midafternoon until around 2200 PDT when conditions moderate. Watch for battling winds and unexpected wind shifts, especially under thunder cells or smoke plumes.

**DIV N:** Some heat remaining in the rocks near Diller Canyon generating interior smokes with a low likelihood of escape. Escape could threaten Mt. Shasta City.

## AIR OPERATIONS

- Sunset 07/04 @ 2046 hours, Sunrise 7/05 @ 0542 hours. Smoke inversion likely setting in around 2300 hours.

## SAFETY

- Plumes or thunderstorms overhead can collapse unexpectedly creating gusty and erratic winds and rapid rates of spread in any direction. Outflow winds can travel long distances following terrain.

# ASSIGNMENT LIST (ICS 204 WF)

CONTROLLED UNCLASSIFIED  
INFORMATION//BASIC

<b>1. Incident Name:</b> <p style="text-align: center;"><b>LAVA FIRE</b></p>	<b>2. Operational Period:</b> Date From: 07/04/21    Date To: 07/05/21 Time From: 0600            Time To: 0600	<b>3. Branch</b> <b>Division</b> <p style="text-align: center;"><b>I</b>                                      <b>A</b></p>
---	---	---

<b>4. Operations Personnel:</b> Operations Section Chief: <b>Chad Cook / Kerri Gilliland(t)</b> Branch Director: <b>Travis Thane</b> Division/Group Supervisor: <b>Daniel Guse/ Joshua Dominguez(t)</b>	Night Ops: <b>Billy Steers / Pat Bell(t)</b> Branch Safety: Air Attack:
--	---

5. Resources Assigned:	** Resources Below in Bold are 12 Hour **							
Resource Identifier	ALS	LWD	Leader	Personnel	Request #	Hours	Reporting Location	
CRW1 ELK MT IHC		7/10	<b>REYES, REYMUNDO</b>	21	<b>C-4</b>	0600-1800	LAVA ICP	
CRW1 KLAMATH IHC		7/6	<b>ZINK, ANDREW S</b>	19	<b>C-12</b>	0600-1800	LAVA ICP	
CRW2IA TRINITY		7/9	<b>DIAS, TRISTAN</b>	20	<b>C-1</b>	0600-1800	LAVA ICP	
CRW2IA PVT FIRESTORM 15A		7/13	<b>BEN PAVAN</b>	20	<b>C-13</b>	0600-1800	LAVA ICP	
CRW2IA PVT FIRESTORM 17		7/12	<b>ALEX RHEA</b>	20	<b>C-31</b>	0600-1800	LAVA ICP	
CRW2 BIRRUETA CREW 2 C-61		7/16	<b>PAZ, CHRISTIAN</b>	12	<b>C-61</b>	0600-1800	LAVA ICP	
ENG3 TMU 341		7/11	<b>KING, TED J</b>	5	<b>E-47</b>	0600-1800	LAVA ICP	
ENG3 INF 331		7/13	<b>HUBBARD, BLAKE</b>	5	<b>E-71</b>	0600-1800	LAVA ICP	
ENG3 NORTHWEST FPD 423		7/14	<b>RAFFERTY, TREVOR</b>	4	<b>E-78</b>	0600-1800	LAVA ICP	
ENG3 PVT E-79 BAILEY ENT		7/13	<b>GREG BAILEY</b>	3	<b>E-79</b>	0600-1800	LAVA ICP	
ENG6 PVT EARTH IND ENG 1		7/13	<b>RUDY VOSS</b>	3	<b>E-66</b>	0600-1800	LAVA ICP	
ENG3 PVT ENGINE CAMINOS E-24			<b>ROADS, JOHN</b>	3	<b>E-252</b>	0600-1800	LAVA ICP	
DOZ2 SKU 2642					<b>E-5</b>	0600-1800	LAVA ICP	
DOZ2 ENF 3		7/11	LANGENDERFER, DAN	4	E-57	0600-0600	LAVA ICP	
DOZ2 PVT E-69 T & S		7/13	ONTANO, JAMES	4	E-69	0600-0600	LAVA ICP	
DOZ2 PVT E-114 BRAUN		7/13	RYAN BRAUN	2	E-114	0600-0600	LAVA ICP	
DOZ2 PVT E-117 STRIKE FIRST		7/13	CHAVEZ, MIKE	3	E-117	0600-0600	LAVA ICP	
DOZ2 PVT E-120 ROWBERRY		7/15	BARWIG, JIM	3	E-120	0600-0600	LAVA ICP	

**6. Work Assignments:**  
**TASK:** Mop up to the extent necessary to minimize the likelihood of escape from control lines.  
**PURPOSE:** Ensure adequate mop-up to prevent spread to the north east.  
**END STATE:** Fire containment.

**7. Special Instructions:**  
 All hired equipment passing through evacuated areas with staffed road closures will be required to present a current LAVA Fire Access pass. Divisions will distribute the passes at briefing breakout. Do not display, give away, or transfer your pass! Write your E# on the pass and present it to law enforcement when requested.

8. Communications							
Name	Ch	Function	Rx Freq	Rx Tone	Tx Freq	Tx Tone	Notes
NIFC C29	4	COMMAND	171.5375	110.9 (T1)	164.8625	110.9 (T1)	
NIFC TAC 1	6	TACTICAL	168.0500	110.9 (T1)	168.0500	110.9 (T1)	
A/G TAC	13	AIR TO GROUND	169.1500	CSQ	169.1500	NONE	
A/G CMD	14	AIR TO GROUND	167.9500	CSQ	167.9500	NONE	
AIR GUARD	16	EMERGENCY	168.6250	CSQ	168.6250	110.9 (T1)	

**9. Prepared by: Name:** Danny Douglas                      RESL  
 Signature:

**ICS 204**                                      Date/Time: 7/3/2021    2200                                      Personnel Count: 151



# ASSIGNMENT LIST (ICS 204 WF)

CONTROLLED UNCLASSIFIED  
INFORMATION//BASIC

<b>1. Incident Name:</b> <b>LAVA FIRE</b>	<b>2. Operational Period:</b> Date From: 07/04/21    Date To: 07/05/21 Time From: 0600            Time To: 0600	<b>3. Branch</b> <b>Division</b> <b>I</b> <b>A</b>
--	---	---

**Page 2 of 2**            **Alpha**

<b>4. Operations Personnel:</b> Operations Section Chief: <b>Chad Cook / Kerri Gilliland(t)</b> Branch Director: <b>Travis Thane</b> Division/Group Supervisor: <b>Daniel Guse/ Joshua Dominguez(t)</b>	Night Ops: <b>Billy Steers / Pat Bell(t)</b> Branch Safety: Air Attack:
--	---

<b>5. Resources Assigned:</b>		<b>** Resources Below in Bold are 12 Hour **</b>					
Resource Identifier	ALS	LWD	Leader	Personnel	Request #	Hours	Reporting Location
DOZ PVT E-10014 MORGAN CRK			BRINK, DONNIE	4	E-10014	0600-0600	LAVA ICP
<b>DOZ PVT E-10015 DON DAVIS</b>		<b>7/13</b>	<b>MIKE MILLER</b>	2	<b>E-10015</b>	<b>0600-1800</b>	<b>LAVA ICP</b>
<b>W/T MSH 4630</b>			<b>BEEM, JIM</b>	1	<b>E-1</b>	<b>0600-1800</b>	<b>LAVA ICP</b>
W/T 38			SELIG, GEORGE	2	E-106	0600-0600	LAVA ICP
W/T SSL 23					E-105	0600-0600	LAVA ICP
W/T PVT E-30 DIETZ			REUSZE, TOM	2	E-30	0600-0600	LAVA ICP
<b>W/T PVT E-84 CARLTON</b>			<b>MARGLON, RON</b>	1	<b>E-84</b>	<b>0600-1800</b>	<b>LAVA ICP</b>
<b>W/T PVT E-242 FORTNER</b>		<b>7/16</b>	<b>FORTNER, BOB</b>	1	<b>E-242</b>	<b>0600-1800</b>	<b>LAVA ICP</b>
W/T PVT E-10059 ROLL'N ROCK		7/12	HEILLE, BRIAN	2	E-10059	0600-0600	LAVA ICP
W/T PVT E-10064 MCLANE			MCCLANE, BILL	2	E-10064	0600-0600	LAVA ICP
<b>TFLD DANIEL</b>		<b>7/15</b>	<b>DANIEL, CHARLES</b>	1	<b>O-214</b>	<b>0600-1800</b>	<b>LAVA ICP</b>
<b>TFLD FOSTER (t)</b>		<b>7/6</b>	<b>FOSTER, DAVID</b>	1	<b>O-27</b>	<b>0600-1800</b>	<b>LAVA ICP</b>
<b>EMTF BENNER</b>		<b>7/17</b>	<b>BENNER, NATHAN</b>	1	<b>O-94</b>	<b>0600-1800</b>	<b>LAVA ICP</b>
<b>EMTF WILSON</b>		<b>7/12</b>	<b>WILSON, BRANDON</b>	1	<b>O-87</b>	<b>0600-1800</b>	<b>LAVA ICP</b>
<b>SOFR MOTT</b>		<b>7/14</b>	<b>MOTT, TODD C</b>	1	<b>O-44</b>	<b>0600-1800</b>	<b>LAVA ICP</b>

**6. Work Assignments:**  
**TASK:** Mop up to the extent necessary to minimize the likelihood of escape from control lines.  
**PURPOSE:** Ensure adequate mop-up to prevent spread to the north east.  
**END STATE:** Fire containment.

**7. Special Instructions:**  
 All hired equipment passing through evacuated areas with staffed road closures will be required to present a current LAVA Fire Access pass. Divisions will distribute the passes at briefing breakout. Do not display, give away, or transfer your pass! Write your E# on the pass and present it to law enforcement when requested.

<b>8. Communications</b>							
Name	Ch	Function	Rx Freq	Rx Tone	Tx Freq	Tx Tone	Notes
NIFC C29	4	COMMAND	171.5375	110.9 (T1)	164.8625	110.9 (T1)	
NIFC TAC 1	6	TACTICAL	168.0500	110.9 (T1)	168.0500	110.9 (T1)	
A/G TAC	13	AIR TO GROUND	169.1500	CSQ	169.1500	NONE	
A/G CMD	14	AIR TO GROUND	167.9500	CSQ	167.9500	NONE	
AIR GUARD	16	EMERGENCY	168.6250	CSQ	168.6250	110.9 (T1)	

**9. Prepared by: Name:**                      Danny Douglas                      RESL                      Signature:

**ICS 204**                      Date/Time: 7/3/2021    2200                      Personnel Count: 22



# ASSIGNMENT LIST (ICS 204 WF)

CONTROLLED UNCLASSIFIED  
INFORMATION//BASIC

<b>1. Incident Name:</b> <b>LAVA FIRE</b>	<b>2. Operational Period:</b> Date From: 07/04/21    Date To: 07/05/21 Time From: 0600    Time To: 0600	<b>3. Branch</b> <b>Division</b> <b>I</b> <b>E</b>
<b>4. Operations Personnel:</b>		Page 1 of 2    Echo

Operations Section Chief: <b>Chad Cook / Kerri Gilliland(t)</b> Branch Director: <b>Travis Thane</b> Division/Group Supervisor: <b>Rich Ingram / Mathew Muller(t)</b>	Night Ops: <b>Billy Steers / Pat Bell(t)</b> Branch Safety: Air Attack:
---	---


5. Resources Assigned:		** Resources Below in Bold are 12 Hour **					
Resource Identifier	ALS	LWD	Leader	Personnel	Request #	Hours	Reporting Location
CRW1 TAHOE IHC		7/10	<b>GERBER, DANNY</b>	21	<b>C-5</b>	<b>0600-1800</b>	<b>LAVA ICP</b>
CRW1 SALMON RIVER IHC		7/9	<b>STOCKER, CODY</b>	19	<b>C-6</b>	<b>0600-1800</b>	<b>LAVA ICP</b>
CRW1 VALYERMO IHC		7/12	<b>RAMSTEAD, MATT</b>	20	<b>C-19</b>	<b>0600-1800</b>	<b>LAVA ICP</b>
CRW2IA MILLER TIMBER 11B		7/13	<b>SCOTT, TANNER</b>	20	<b>C-26</b>	<b>0600-1800</b>	<b>LAVA ICP</b>
CRW2IA PVT PATRICK 20A		7/12	<b>AUSTIN HERGERT</b>	20	<b>C-46</b>	<b>0600-1800</b>	<b>LAVA ICP</b>
WFM KNF GRASS LAKE		7/9	<b>JOHNSON, WILLIAM</b>	7	<b>O-2</b>	<b>0600-1800</b>	<b>LAVA ICP</b>
STC LNF 3615C		7/10	<b>BRIAN MARTIN</b>	27	<b>E-33</b>	<b>0600-1800</b>	<b>LAVA ICP</b>
ENG6 PVT R2K E-254			<b>STILLSMOKING, STILL</b>	3	<b>E-254</b>	<b>0600-1800</b>	<b>LAVA ICP</b>
ENG3 BRUSH 4632 E-255			<b>DENNISON, PAUL</b>	3	<b>E-255</b>	<b>0600-1800</b>	<b>LAVA ICP</b>
STL LNU 9142L			<b>GRAY, NATE</b>	8	E-10005	0600-0600	LAVA ICP
STL TGU 9250L			<b>JONSSON, MAGNUS</b>		E-10050	0600-0600	LAVA ICP
DOZ2 SKU 2640					<b>E-4</b>	<b>0600-1800</b>	<b>LAVA ICP</b>
DOZ2 PVT E-116 BARRY BROWN		7/13	<b>BROWN, BARRY</b>	2	<b>E-116</b>	<b>0600-1800</b>	<b>LAVA ICP</b>
DOZ3 PVT E-121 LONESTAR		7/13	<b>HARRIS JACKSON</b>	4	E-121	0600-0600	LAVA ICP
DOZ3 PVT E-122 CATTANEO		7/13	<b>GORDON, MIKE</b>	2	<b>E-122</b>	<b>0600-1800</b>	<b>LAVA ICP</b>
DOZ3 PVT E-124 COTTONWOOD		7/13	<b>HILL COLTON</b>	4	E-124	0600-0600	LAVA ICP
W/T OES 31		8/1	<b>KEVIN RICHARDSON</b>	2	E-102	0600-0600	LAVA ICP
MAS PVT E-203		7/12	<b>WRIGHT, TIM</b>	1	<b>E-203</b>	<b>0600-1800</b>	<b>LAVA ICP</b>

**6. Work Assignments:**  
**TASK:** Continue direct and/or indirect line construction to Bolam Creek. Mop up control line to extent necessary.  
**PURPOSE:** To minimize the likelihood of escape from control lines.  
**END STATE:** Fire containment.

**7. Special Instructions:**  
 All hired equipment passing through evacuated areas with staffed road closures will be required to present a current LAVA Fire Access pass. Divisions will distribute the passes at briefing breakout. Do not display, give away, or transfer your pass! Write your E# on the pass and present it to law enforcement when requested.

**8. Communications**

Name	Ch	Function	Rx Freq	Rx Tone	Tx Freq	Tx Tone	Notes
NIFC C29	4	COMMAND	171.5375	110.9 (T1)	164.8625	110.9 (T1)	
NIFC TAC 3	7	TACTICAL	168.6000	110.9 (T1)	168.6000	110.9 (T1)	
A/G TAC	13	AIR TO GROUND	169.1500	CSQ	169.1500	NONE	
A/G CMD	14	AIR TO GROUND	167.9500	CSQ	167.9500	NONE	
AIR GUARD	16	EMERGENCY	168.6250	CSQ	168.6250	110.9 (T1)	

**9. Prepared by: Name:** Danny Douglas    RESI    Signature: 

ICS 204    Date/Time: 7/3/2021 2200    Personnel Count: 163





# ASSIGNMENT LIST (ICS 204 WF)

CONTROLLED UNCLASSIFIED  
INFORMATION//BASIC

<b>1. Incident Name:</b> <b>LAVA FIRE</b>	<b>2. Operational Period:</b> Date From: 07/04/21    Date To: 07/05/21 Time From: 0600        Time To: 0600	<b>3. Branch</b> <b>Division</b> <b>III</b> <b>N</b>  Page 1 of 2                      November
--	---	--

<b>4. Operations Personnel:</b> Operations Section Chief: <b>Chad Cook / Kerri Gilliland(t)</b> Branch Director: <b>Peter Tolosano</b> Division/Group Supervisor: <b>Mike Carter / Jonathan Duncan(t)</b>	Night Ops: <b>Billy Steers / Pat Bell(t)</b> Branch Safety: Air Attack:
--	---

5. Resources Assigned:		** Resources Below in Bold are 12 Hour **					
Resource Identifier	ALS	LWD	Leader	Personnel	Request #	Hours	Reporting Location
<b>CRW2IA PVT FIRESTORM 6</b>		<b>7/12</b>	<b>LOPEZ, GENE</b>	20	<b>C-33</b>	<b>0600-1800</b>	<b>LAVA ICP</b>
<b>STC OES 4800C</b>		<b>7/14</b>	<b>CANFIELD, WILLIAM</b>	21	<b>E-10054</b>	<b>0600-1800</b>	<b>LAVA ICP</b>
<b>ENG MT SHASTA FPD 4615</b>		<b>7/14</b>	<b>SMITH, MARQUIS</b>	3	<b>E-10030</b>	<b>0600-1800</b>	<b>LAVA ICP</b>
<b>ENG3 AZ-GOR 1634</b>		<b>7/14</b>	<b>LABAS, BRANDY GAY</b>	3	<b>E-80</b>	<b>0600-1800</b>	<b>LAVA ICP</b>
<b>ENG5 PVT E-199 A&amp;H</b>		<b>7/14</b>	<b>SAMS, DANIEL</b>	3	<b>E-199</b>	<b>0600-1800</b>	<b>LAVA ICP</b>
<b>ENG3 PVT E-76 HEK JONES</b>		<b>7/13</b>	<b>JONES, BRINN</b>	3	<b>E-76</b>	<b>0600-1800</b>	<b>LAVA ICP</b>
<b>ENG6 WEED CITY 1212</b>		<b>7/14</b>		2	<b>E-214</b>	<b>0600-1800</b>	<b>LAVA ICP</b>
<b>DOZ2 PVT E-58 NORTHSTATE</b>		<b>7/12</b>	<b>METZ, CARSON</b>	2	<b>E-58</b>	<b>0600-1800</b>	<b>LAVA ICP</b>
<b>W/T ENF 235</b>		<b>7/13</b>	<b>BOYD, JOSHUA</b>	2	<b>E-87</b>	<b>0600-1800</b>	<b>LAVA ICP</b>
<b>W/T WEA 2141</b>		<b>7/12</b>		2	<b>E-101</b>	<b>0600-1800</b>	<b>LAVA ICP</b>
<b>W/T MRO 5490</b>		<b>7/12</b>	<b>JOHNSON, SHAWN</b>	2	<b>E-103</b>	<b>0600-1800</b>	<b>LAVA ICP</b>
<b>W/T PVT E-31 PROPUMP</b>		<b>7/10</b>	<b>SEABOURNE, MIKE</b>	2	<b>E-31</b>	<b>0600-0600</b>	<b>LAVA ICP</b>
<b>W/T PVT E-83 LENAHAH</b>				1	<b>E-83</b>	<b>0600-1800</b>	<b>LAVA ICP</b>
<b>W/T PVT E-240 DAVID</b>			<b>PRICE, DAVID</b>	1	<b>E-240</b>	<b>0600-1800</b>	<b>LAVA ICP</b>
<b>W/T PVT E-241 DAVID</b>			<b>SMITH, LARRY</b>	1	<b>E-241</b>	<b>0600-1800</b>	<b>LAVA ICP</b>
<b>TFLD FABBRI</b>		<b>7/11</b>	<b>FABBRI, BRIAN J</b>	1	<b>O-40</b>	<b>0600-1800</b>	<b>LAVA ICP</b>
<b>HEQB LARGE</b>		<b>7/10</b>	<b>LARGE, TYSON Z</b>	1	<b>O-41</b>	<b>0600-1800</b>	<b>LAVA ICP</b>
<b>EMTF OBERG</b>			<b>OBERG, JONATHAN</b>	1	<b>O-88</b>	<b>0600-1800</b>	<b>LAVA ICP</b>

**6. Work Assignments:**  
**TASK:** Mop up to the extent necessary to minimize the likelihood of escape from control lines.  
**PURPOSE:** To keep fire in control lines  
**END STATE:** Fire containment.

**7. Special Instructions:**  
 All hired equipment passing through evacuated areas with staffed road closures will be required to present a current LAVA Fire Access pass. Divisions will distribute the passes at briefing breakout. Do not display, give away, or transfer your pass! Write your E# on the pass and present it to law enforcement when requested.

8. Communications							
Name	Ch	Function	Rx Freq	Rx Tone	Tx Freq	Tx Tone	Notes
NIFC C9	3	COMMAND	170.0125	110.9 (T1)	168.2500	110.9 (T1)	
NIFC TAC 6	9	TACTICAL	166.7750	110.9 (T1)	166.7750	110.9 (T1)	
A/G TAC	13	AIR TO GROUND	169.1500	CSQ	169.1500	NONE	
A/G CMD	14	AIR TO GROUND	167.9500	CSQ	167.9500	NONE	
AIR GUARD	16	EMERGENCY	168.6250	CSQ	168.6250	110.9 (T1)	

**9. Prepared by: Name:** Danny Douglas                      RESL                      Signature:

**ICS 204**                      Date/Time: 7/3/2021    2200                      Personnel Count: 71



# ASSIGNMENT LIST (ICS 204 WF)

CONTROLLED UNCLASSIFIED  
INFORMATION//BASIC

<b>1. Incident Name:</b> <b>LAVA FIRE</b>	<b>2. Operational Period:</b> Date From: 07/04/21    Date To: 07/05/21 Time From: 0600            Time To: 0600	<b>3. Branch</b> <b>Division</b>  <b>III</b> <b>P/R</b>  Page 1 of 2                      Papa/Romeo
--	---	--

<b>4. Operations Personnel:</b> Operations Section Chief: <b>Chad Cook / Kerri Gilliland(t)</b> Branch Director: <b>Peter Tolosano</b> Division/Group Supervisor: <b>Juan Molve / John Hunt(t)/ Nolan Roth(t)</b>	Night Ops: <b>Billy Steers / Pat Bell(t)</b> Branch Safety: Air Attack:
--	---

5. Resources Assigned:	** Resources Below in Bold are 12 Hour **							
Resource Identifier	ALS	LWD	Leader	Personnel	Request #	Hours	Reporting Location	
CRW2IA PVT FIRESTORM 15B		7/13	<b>CARDIFF, LEVI</b>	19	<b>C-14</b>	<b>0600-1800</b>	<b>LAVA ICP</b>	
CRW2IA PVT DIAMOND FIRE 16		7/12	<b>PHILLIPS, JERROD</b>	20	<b>C-30</b>	<b>0600-1800</b>	<b>LAVA ICP</b>	
CRW2 PVT PACIFIC OASIS #8			<b>PINDLER, ZANE</b>	20	<b>C-58</b>	<b>0600-1800</b>	<b>LAVA ICP</b>	
CRW2 PVT PACIFIC OASIS #15			<b>ZIEGLER, JACOB</b>	20	<b>C-59</b>	<b>0600-1800</b>	<b>LAVA ICP</b>	
CRW2 C-60 OC 23			<b>BLANCAS, RUDY</b>	16 +/-	<b>C-60</b>	<b>0600-1800</b>	<b>LAVA ICP</b>	
STC SRF 2600C			<b>RUIZ, ANDRES</b>	18 +/-	<b>E-3</b>	<b>0600-1800</b>	<b>LAVA ICP</b>	
ENG3 ENF 314		7/14	<b>HOFFMAN, CASEY</b>	5	<b>E-72</b>	<b>1800-0600</b>	<b>LAVA ICP</b>	
ENG3 LPF 354		7/13	<b>TALIFERO, SNOW</b>	5	<b>E-75</b>	<b>0600-1800</b>	<b>LAVA ICP</b>	
ENG4 PVT E-198 PACIFIC HABITA		7/14	<b>ROBINSON, GARY</b>	3	<b>E-198</b>	<b>0600-1800</b>	<b>LAVA ICP</b>	
STF OES 2861F			<b>CARDOSI, STEVE</b>	18	<b>E-10052</b>	<b>0600-1800</b>	<b>LAVA ICP</b>	
ENG6 PVT GE ENG 1		7/13	<b>AGUILAR, EDGAR</b>	3	<b>E-63</b>	<b>0600-1800</b>	<b>LAVA ICP</b>	
DOZ2 SHF 29		7/10	<b>HENDERSON, JOSH</b>	4	<b>E-204</b>	<b>0600-0600</b>	<b>LAVA ICP</b>	
DOZ2 PVT E-88 STONY CRK			<b>ANDREWS, LUKE</b>		<b>E-88</b>	<b>0600-1800</b>	<b>LAVA ICP</b>	
W/T LNF 3			<b>KARALIS, JOSHUA P</b>		<b>E-7</b>	<b>0600-1800</b>	<b>LAVA ICP</b>	
W/T SON 3392		7/12	<b>CAMPBELL, JASON</b>		<b>E-104</b>	<b>0600-1800</b>	<b>LAVA ICP</b>	
W/T PVT E-28 ALAN'S			<b>LOGUE, RICKY</b>		<b>E-28</b>	<b>0600-1800</b>	<b>LAVA ICP</b>	
W/T PVT E-29 COTTONWOOD		7/10	<b>VARGAS, RICHIE</b>		<b>E-29</b>	<b>0600-1800</b>	<b>LAVA ICP</b>	
W/T PVT E-81 LENAHAH					<b>E-81</b>	<b>0600-1800</b>	<b>LAVA ICP</b>	

**6. Work Assignments:**  
**TASK:** Mop up to the extent necessary to minimize the likelihood of escape from control lines.  
**PURPOSE:** Remove any heat.  
**END STATE:** Fire containment.

**7. Special Instructions:**  
 All hired equipment passing through evacuated areas with staffed road closures will be required to present a current LAVA Fire Access pass. Divisions will distribute the passes at briefing breakout. Do not display, give away, or transfer your pass! Write your E# on the pass and present it to law enforcement when requested.

8. Communications							
Name	Ch	Function	Rx Freq	Rx Tone	Tx Freq	Tx Tone	Notes
NIFC C9	3	COMMAND	170.0125	110.9 (T1)	168.2500	110.9 (T1)	
NIFC TAC 5	8	TACTICAL	166.7250	110.9 (T1)	166.7520	110.9 (T1)	
A/G TAC	13	AIR TO GROUND	169.1500	CSQ	169.1500	NONE	
A/G CMD	14	AIR TO GROUND	167.9500	CSQ	167.9500	NONE	
AIR GUARD	16	EMERGENCY	168.6250	CSQ	168.6250	110.9 (T1)	

<b>9. Prepared by: Name:</b>	Danny Douglas	RESL	Signature:
------------------------------	---------------	------	------------

<b>ICS 204</b>	Date/Time: 7/3/2021 2200	Personnel Count: 151
----------------	--------------------------	----------------------







# ASSIGNMENT LIST (ICS 204 WF)

CONTROLLED UNCLASSIFIED  
INFORMATION//BASIC

<b>1. Incident Name:</b> <b>LAVA FIRE</b>	<b>2. Operational Period:</b> Date From: 07/04/21    Date To: 07/05/21 Time From: 0600    Time To: 0600	<b>3. Branch</b> <b>Division</b> <b>III</b> <b>CONTINGENCY WEST</b>
--	---	--

<b>4. Operations Personnel:</b>		Page 1 of 1
Operations Section Chief: <b>Chad Cook / Kerri Gilliland(t)</b>	Night Ops: <b>Billy Steers / Pat Bell(t)</b>	
Branch Director: <b>Peter Tolosano</b>	Branch Safety:	
Division/Group Supervisor: <b>Larry Turman</b>	Air Attack:	

5. Resources Assigned:	** Resources Below in Bold are 12 Hour **					
Resource Identifier	ALS	LWD	Leader	Personnel	Request #	Hours    Reporting Location
ENG3 SQF 332			<b>WORKMAN, DALTON J</b>	5	<b>E-74</b>	<b>0600-1800 LAVA ICP</b>
DOZ2 PVT E-116 BARRY BROWN		7/13	<b>BROWN, BARRY</b>	2	<b>E-116</b>	<b>0600-1800 LAVA ICP</b>
DOZ3 PVT E-123 CODY LAMB			<b>LAMB, CODY</b>	3	<b>E-123</b>	<b>0600-1800 LAVA ICP</b>
DOZ3 PVT E-125 SUNRISE			<b>ANDREW, BYRON</b>	2	<b>E-125</b>	<b>0600-1800 LAVA ICP</b>
DOZ PVT E-10042 DARRAH				1	<b>E-10042</b>	<b>0600-1800 LAVA ICP</b>
DOZ PVT E-10043 DARRAH				1	<b>E-10043</b>	<b>0600-1800 LAVA ICP</b>
DOZ PVT E-10044 DARRAH				1	<b>E-10044</b>	<b>0600-1800 LAVA ICP</b>
DOZ PVT E-10045 SW MAINT				1	<b>E-10045</b>	<b>0600-1800 LAVA ICP</b>
W/T PVT E-10057 SW MAINT				1	<b>E-10057</b>	<b>0600-1800 LAVA ICP</b>
W/T PVT E-10060 HARRIS				1	<b>E-10060</b>	<b>0600-1800 LAVA ICP</b>
W/T PVT E-10063 HARRIS				1	<b>E-10063</b>	<b>0600-1800 LAVA ICP</b>
FEL PVT E-10083 DIVERSIFIED				1	<b>E-10083</b>	<b>0600-1800 LAVA ICP</b>
FEL PVT E-10084 DIVERSIFIED			<b>PERGERSON, JAROD</b>	1	<b>E-10084</b>	<b>0600-1800 LAVA ICP</b>
HEQB BONFANTE			<b>BONFANTE, DAN P</b>	1	<b>O-10013</b>	<b>0600-1800 LAVA ICP</b>
HEQB COLLAMER			<b>COLLAMER, SARAH A</b>	1	<b>O-10012</b>	<b>0600-1800 LAVA ICP</b>
HEQB DENMAN			<b>DENMAN, DAMON</b>	1	<b>O-10067</b>	<b>0600-1800 LAVA ICP</b>

**6. Work Assignments:**  
**TASK:** Identify and construct contingency line.  
**PURPOSE:** Coordinate with Michigan California Timberland representative to ensure contingency line locations are consistent with landowner objectives.  
**END STATE:** Complete all contingency lines to establish a secondary line.

**7. Special Instructions:**  
 All hired equipment passing through evacuated areas with staffed road closures will be required to present a current LAVA Fire Access pass. Divisions will distribute the passes at briefing breakout. Do not display, give away, or transfer your pass! Write your E# on the pass and present it to law enforcement when requested.

**8. Communications**

Name	Ch	Function	Rx Freq	Rx Tone	Tx Freq	Tx Tone	Notes
NIFC C29	4	COMMAND	171.5375	110.9 (T1)	164.8625	110.9 (T1)	
CDF TAC 25	12	TACTICAL	159.2775	192.8 (T16)	159.2775	192.8 (T16)	
A/G TAC	13	AIR TO GROUND	169.1500	CSQ	169.1500	NONE	
A/G CMD	14	AIR TO GROUND	167.9500	CSQ	167.9500	NONE	
AIR GUARD	16	EMERGENCY	168.6250	CSQ	168.6250	110.9 (T1)	

**9. Prepared by: Name:**    Danny Douglas    RESL    Signature:

**ICS 204**    Date/Time: 7/3/2021    2200    Personnel Count: 24





**NIGHT**

**204s**

# ASSIGNMENT LIST (ICS 204 WF)

CONTROLLED UNCLASSIFIED  
INFORMATION//BASIC

<b>1. Incident Name:</b> <p style="text-align: center;"><b>LAVA FIRE</b></p>	<b>2. Operational Period:</b> Date From: 07/04/21    Date To: 07/05/21 Time From: 0600        Time To: 0600	<b>3. Branch</b> <b>Division</b> <p style="text-align: center;"><b>NIGHT</b>                              <b>A</b></p> <p style="text-align: center;"><b>Page 1 of 2</b>                      <b>Alpha</b></p>
---	---	---

<b>4. Operations Personnel:</b> Operations Section Chief: <b>Chad Cook / Kerri Gilliland(t)</b> Branch Director: Division/Group Supervisor: <b>Phillip Gerhardson</b>	Night Ops: <b>Billy Steers</b> Branch Safety: Air Attack:
--	---

5. Resources Assigned:		** Resources Below in Bold are 12 Hour **					
Resource Identifier	ALS	LWD	Leader	Personnel	Request #	Hours	Reporting Location
<b>CRW2IA PVT PATRICK 13B</b>		<b>7/10</b>	<b>DOMBI, JOSH</b>	20	<b>C-37</b>	<b>1800-0600</b>	<b>LAVA ICP</b>
<b>ENG3 SHF 313</b>		<b>7/10</b>	<b>VAUGHN, KENNETH W</b>	5	<b>E-46</b>	<b>1800-0600</b>	<b>LAVA ICP</b>
<b>ENG3 ENF 314</b>		<b>7/14</b>	<b>HOFFMAN, CASEY</b>	5	<b>E-72</b>	<b>1800-0600</b>	<b>LAVA ICP</b>
<b>ENG3 353 #6219</b>		<b>7/17</b>	<b>KOLKMANN, MATTHEW</b>	5	<b>E-77</b>	<b>1800-0600</b>	<b>LAVA ICP</b>
<b>DOZ3 PVT E-127 ADAMS</b>					<b>E-127</b>	<b>1800-0600</b>	<b>LAVA ICP</b>
DOZ2 ENF 3		7/11	LANGENDERFER, DAN	4	E-57	0600-0600	LAVA ICP
DOZ2 PVT E-69 T & S		7/13	ONTANO, JAMES	4	E-69	0600-0600	LAVA ICP
DOZ2 PVT E-114 BRAUN		7/13	RYAN BRAUN	2	E-114	0600-0600	LAVA ICP
DOZ2 PVT E-117 STRIKE FIRST		7/13	CHAVEZ, MIKE	3	E-117	0600-0600	LAVA ICP
DOZ2 PVT E-120 ROWBERRY		7/15	BARWIG, JIM	3	E-120	0600-0600	LAVA ICP
DOZ PVT E-10014 MORGAN CRK			BRINK, DONNIE		E-10014	0600-0600	LAVA ICP
W/T SSL 23					E-105	0600-0600	LAVA ICP
W/T 38			SELIG, GEORGE	2	E-106	0600-0600	LAVA ICP
<b>W/T PVT E-26 DIETZ EQUIP</b>			<b>RICHARDSON, DAVID</b>	1	<b>E-26</b>	<b>1800-0600</b>	<b>LAVA ICP</b>
W/T PVT E-30 DIETZ			REUSZE, TOM	2	E-30	0600-0600	LAVA ICP
W/T PVT E-10059 ROLL'N ROCK		7/12	HEILLE, BRIAN	2	E-10059	0600-0600	LAVA ICP
W/T PVT E-10064 MCLANE			MCCLANE, BILL	2	E-10064	0600-0600	LAVA ICP

**6. Work Assignments:**  
**TASK:** Hold and mop up fireline from Lava Bed at Big Springs to Military Pass Rd. Patrol and Mop up from the 42 N18AA West to the Railroad tracks.  
**PURPOSE:** To keep fire within containment lines.  
**END STATE:** Fire containment.

**7. Special Instructions:**  
 All hired equipment passing through evacuated areas with staffed road closures will be required to present a current LAVA Fire Access pass. Divisions will distribute the passes at briefing breakout. Do not display, give away, or transfer your pass! Write your E# on the pass and present it to law enforcement when requested.

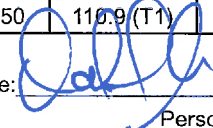
8. Communications							
Name	Ch	Function	Rx Freq	Rx Tone	Tx Freq	Tx Tone	Notes
NIFC C29	4	COMMAND	171.5375	110.9 (T1)	164.8625	110.9 (T1)	
NIFC TAC 1	6	TACTICAL	168.0500	110.9 (T1)	168.0500	110.9 (T1)	
A/G TAC	13	AIR TO GROUND	169.1500	CSQ	169.1500	NONE	
A/G CMD	14	AIR TO GROUND	167.9500	CSQ	167.9500	NONE	
AIR GUARD	16	EMERGENCY	168.6250	CSQ	168.6250	110.9 (T1)	

<b>9. Prepared by: Name:</b>	Danny Douglas	RESL	Signature:
<b>ICS 204</b>	Date/Time: 7/3/2021 2200	Personnel Count: 60	



# ASSIGNMENT LIST (ICS 204 WF)

CONTROLLED UNCLASSIFIED  
INFORMATION//BASIC

<b>1. Incident Name:</b> <b>LAVA FIRE</b>		<b>2. Operational Period:</b> Date From: 07/04/21    Date To: 07/05/21 Time From: 0600    Time To: 0600				<b>3. Branch</b> <b>NIGHT</b>		<b>Division</b> <b>E</b>	
<b>4. Operations Personnel:</b>						Page 1 of 1		Echo	
Operations Section Chief: <b>Chad Cook / Kerri Gilliland(t)</b> Branch Director: Division/Group Supervisor: <b>Abel Mata/Mike Anderson/Jason Obannon(t)</b>					Night Ops: <b>Billy Steers</b> Branch Safety: Air Attack:				
<b>5. Resources Assigned:</b>			<b>** Resources Below in Bold are 12 Hour **</b>						
Resource Identifier	ALS	LWD	Leader	Personnel	Request #	Hours	Reporting Location		
<b>CRW2IA LASSEN CREW 9</b>		<b>7/10</b>	<b>HERNANDEZ, JAKE</b>	19	<b>C-2</b>	<b>1800-0600</b>	<b>LAVA ICP</b>		
<b>CRW1 BECKWOURTH IHC</b>		<b>7/10</b>	<b>WINTCH, MIKE</b>	20	<b>C-7</b>	<b>1800-0600</b>	<b>LAVA ICP</b>		
<b>CRW1 DEL ROSA IHC</b>		<b>7/11</b>	<b>David Borero</b>	18	<b>C-18</b>	<b>1800-0600</b>	<b>LAVA ICP</b>		
<b>CRW1 ARROYO GRANDE IHC</b>		<b>7/12</b>	<b>Phil Hernandez</b>	19	<b>C-20</b>	<b>1800-0600</b>	<b>LAVA ICP</b>		
<b>CRW2IA PVT PATRICK 20B</b>			<b>Neil Raifkon</b>		<b>C-45</b>	<b>1800-0600</b>	<b>LAVA ICP</b>		
STL LNU 9142L			GRAY, NATE	8	E-10005	0600-0600	LAVA ICP		
STL TGU 9250L			JONSSON, MAGNUS		E-10050	0600-0600	LAVA ICP		
<b>DO22 PVT E-116 BARRY BROWN</b>		<b>7/13</b>	<b>BROWN, BARRY</b>	2	<b>E-116</b>	<b>0600-1800</b>	<b>LAVA ICP</b>		
DO23 PVT E-121 LONESTAR		7/13	HARRIS JACKSON	4	E-121	0600-0600	LAVA ICP		
DO23 PVT E-124 COTTONWOOD		7/13	HILL COLTON	4	E-124	0600-0600	LAVA ICP		
W/T OES 31		8/1	KEVIN RICHARDSON	2	E-102	0600-0600	LAVA ICP		
<b>EMPF POPE</b>			<b>POPE, ROBERT</b>	1	<b>O-82</b>	<b>1800-0600</b>	<b>LAVA ICP</b>		
<b>EMTF INMAN</b>		<b>7/14</b>	<b>COWIE, CRAIG G</b>	1	<b>O-135</b>	<b>1800-0600</b>	<b>LAVA ICP</b>		
<b>SOF2 COWIE</b>				1		<b>1800-0600</b>	<b>LAVA ICP</b>		
<b>6. Work Assignments:</b>									
TASK: Build direct fireline from 42N18AA road south to the rocks on Mount Shasta.									
PURPOSE: to contain fire spread.									
END STATE: Fire containment.									
New improvements with dozer lines need to be approved by the lead READ and send information to GISS and SITL.									
*No dozer line in the wilderness without approval.*									
<b>7. Special Instructions:</b>									
All hired equipment passing through evacuated areas with staffed road closures will be required to present a current LAVA Fire Access pass. Divisions will distribute the passes at briefing breakout. Do not display, give away, or transfer your pass! Write your E# on the pass and present it to law enforcement when requested.									
Backhaul all trash, modules need to take all trash back to ICP.									
<b>8. Communications</b>									
Name	Ch	Function	Rx Freq	Rx Tone	Tx Freq	Tx Tone	Notes		
NIFC C29	4	COMMAND	171.5375	110.9 (T1)	164.8625	110.9 (T1)			
NIFC TAC 3	7	TACTICAL	168.6000	110.9 (T1)	168.6000	110.9 (T1)			
A/G TAC	13	AIR TO GROUND	169.1500	CSQ	169.1500	NONE			
A/G CMD	14	AIR TO GROUND	167.9500	CSQ	167.9500	NONE			
AIR GUARD	16	EMERGENCY	168.6250	CSQ	168.6250	110.9 (T1)			
<b>9. Prepared by: Name:</b>		Danny Douglas			RESL				
Signature:									
<b>ICS 204</b>		Date/Time: 7/3/2021			2200		Personnel Count: 99		



# ASSIGNMENT LIST (ICS 204 WF)

CONTROLLED UNCLASSIFIED  
INFORMATION/BASIC

<b>1. Incident Name:</b> <b>LAVA FIRE</b>	<b>2. Operational Period:</b> Date From: 07/04/21    Date To: 07/05/21 Time From: 0600    Time To: 0600	<b>3. Branch</b> <b>Division</b> <b>NIGHT</b> <b>N/P/R</b>
<b>4. Operations Personnel:</b>		Page 1 of 1

Operations Section Chief: <b>Chad Cook / Kerri Gilliland(t)</b>	Night Ops: <b>Billy Steers</b>
Branch Director:	Branch Safety:
Division/Group Supervisor: <b>Daniel Cedeno</b>	Air Attack:


5. Resources Assigned:		** Resources Below in Bold are 12 Hour **						
Resource Identifier	ALS	LWD	Leader	Personnel	Request #	Hours	Reporting Location	
STC SHF 3675C		7/11	<b>WILLIAMSON, TERRY</b>	27	<b>E-107</b>	<b>1800-0600</b>	<b>LAVA ICP</b>	
ENG3 SHF 321		7/10	<b>TONEY, BOB</b>	6	<b>E-51</b>	<b>1800-0600</b>	<b>LAVA ICP</b>	
ENG3 PNF 323		7/10	<b>BRENZOVIK, THOMAS</b>	5	<b>E-48</b>	<b>1800-0600</b>	<b>LAVA ICP</b>	
ENG6 PVT IMPERIAL ENG 1		7/13	<b>CHAPARRO, JORGE</b>	3	<b>E-64</b>	<b>1800-0600</b>	<b>LAVA ICP</b>	
ENG6 PVT GRAYBACK ENG 1		7/13	<b>FISH, JOHN</b>	3	<b>E-65</b>	<b>1800-0600</b>	<b>LAVA ICP</b>	
ENG6 PVT EARTH IND ENG 2		7/12	<b>ABEL, ARRON</b>	3	<b>E-67</b>	<b>1800-0600</b>	<b>LAVA ICP</b>	
DO22 SHF 29		7/10	HENDERSON, JOSH	4	E-204	0600-0600	LAVA ICP	
DO22 PVT E-118 SPRATT		7/13	SPRATT, ERIC	2	E-118	0600-0600	LAVA ICP	
W/T PVT E-27 PJ&R		7/10	<b>YOKOYAMA, PAUL</b>	1	<b>E-27</b>	<b>1800-0600</b>	<b>LAVA ICP</b>	
W/T PVT E-31 PROPUMP		7/10	SEABOURNE, MIKE	2	E-31	0600-0600	LAVA ICP	
EMPF DART			<b>DART, JOSHUA</b>	1	<b>O-81</b>	<b>1800-0600</b>	<b>LAVA ICP</b>	
EMTF LOVEJOY			<b>LOVEJOY, ANDREW J</b>	1	<b>O-92</b>	<b>1800-0600</b>	<b>LAVA ICP</b>	
SOFR LUCAS		7/14	<b>UCAS, MATTHEW ALLEN</b>	1	<b>O-80</b>	<b>1800-0600</b>	<b>LAVA ICP</b>	

**6. Work Assignments:**  
**TASK:** Mop up only to the extent necessary. Monitor slop overs and spot fires along control lines from DP5 to DP3.  
**PURPOSE:** To minimize the likelihood of escape from control line.  
**END STATE:** Fire containment.

**7. Special Instructions:**  
 All hired equipment passing through evacuated areas with staffed road closures will be required to present a current LAVA Fire Access pass. Divisions will distribute the passes at briefing breakout. Do not display, give away, or transfer your pass! Write your E# on the pass and present it to law enforcement when requested.  
  
 Backhaul all trash, modules need to take all trash back to ICP.

**8. Communications**

Name	Ch	Function	Rx Freq	Rx Tone	Tx Freq	Tx Tone	Notes
NIFC C9	3	COMMAND	170.0125	110.9 (T1)	168.2500	110.9 (T1)	
NIFC TAC 6	9	TACTICAL	166.7750	110.9 (T1)	166.7750	110.9 (T1)	
A/G TAC	13	AIR TO GROUND	169.1500	CSQ	169.1500	NONE	
A/G CMD	14	AIR TO GROUND	167.9500	CSQ	167.9500	NONE	
AIR GUARD	16	EMERGENCY	168.6250	CSQ	168.6250	110.9 (T1)	

**9. Prepared by: Name:** Danny Douglas    RESL    Signature: 

**ICS 204**    Date/Time: 7/3/2021    2200    Personnel Count: 59

### AIR OPERATIONS SUMMARY ICS-220

<b>Incident Name and Incident Number</b> Lava CA-SHF-0949	<b>Sunrise</b> 540	<b>Startup</b> 612	<b>Cutoff</b> 2016	<b>Sunset</b> 2046	<b>Date Prepared</b> Saturday, July 03, 2021	<b>Time Prepared</b> 1630	<b>Prepared By</b> Jason Nava	
<b>General Remarks, Safety Notes, Hazards, Air Operations Special Equipment, etc.</b> TRACK ALL DIPSITE LOCATIONS / NUMBER OF DIPS / GALLONS TAKEN. TRACK ALL DROP LOCATIONS / NUMBER OF DROPS / GALLONS DROPPED ALL GPS DATA TO BE COLLECTED IN DEGREES, MINUTES, DECIMAL MINUTES FORMAT. AVOID Aerial Application of Retardant / Foam / Agent within 300' of Waterways, Bodies of Water, etc. If Retardant / Foam / Agent is Dropped Within These Areas Immediately Notify the AOBED and Provide the Following Information: Lat / Long, Estimated Number of Gallons and a Map Detailing The Area.					<b>Operational Period - Date</b> Sunday, July 04, 2021			<b>Operational Period - Time</b> 0700-2100
<b>Helibase Information</b> Name LAVA Latitude 41° 15.87 Longitude 122° 16.34  Name SISKIYOU Latitude 41° 45.16' Longitude 122° 28.64' (Use page 2 if needed)					<b>TFR Information</b> Request # A- Radius: POLYGON NM Altitude: 12000' MSL Lat Long Centerpoint: NOTAMS: 1/3867 Frequency 120.025 <a href="http://tfr.faa.gov/tfrz/list.html">http://tfr.faa.gov/tfrz/list.html</a>			<b>Rescue Ship Information</b> Name Todd Tollefsrud Phone 509-860-2074 Make/Model AS=350-B3E Location Request Procedure for These Aircraft: See Medical Plan For Additional Info

Frequencies	RX	Tone	TX	Tone	AM / FM	Position	Name	Phone	Trainee Name	Phone
AIR TACTICS	168.3375		168.3375		FM	AOBD	Jason Nava	661-805-4750		
AIR / AIR Rotary Wing	124.0250		124.0250		AM	ASGS (T)			TYLER DETRICK	530-925-8688
AIR / AIR - Briefing	120.0250		120.0250		AM	HEBM	Lava BLAINE COYLE	209-459-9245	CHRIS BAVEITA	530-339-8687
AIR / GROUND - Command	167.9500		167.9500		FM	HEBM	Siskiyou MIKE STELP	530-306-5711		
AIR / GROUND - Tactical	169.1500		169.1500		FM	ATGS	ERIC HASKINS	909-553-4702	LEONARD DIMACULANGAN	626-941-4578
COMMAND 1	170.9750	110.9 (1)	168.7000	110.9 (1)	FM	HLCO				
COMMAND 9	170.0125	110.9 (1)	165.2500	110.9 (1)	FM					
COMMAND 29	171.5375	110.9 (1)	164.8625	110.9 (1)	FM					
DECK-LAVA	163.1000		163.1000		AM	HLCO	BILL LAMPERT	530-598-4128		
DECK-SISKIYOU	168.3500		168.3500		FM					
CALCORD - MEDICAL	156.0750	156.7 (6)	156.0750	156.7 (6)	FM	UAS UR31	Edmond Yue	304-906-9065		
FAA Tower	120.2750		120.2750		AM	UAS UR31	Julio Campos	559-480-9401		

FAA #	Type	Make/Model	Helibase	Avail	Start	Remarks / A - #	FAA #	Type	Make/Model	Helibase	Avail	Start	Remarks / A - #
8AC	1	S-64	LAVA	700	800		3CH	1	BV-234	SISKIYOU	TBD	TBD	
73U	1	S-61	LAVA	700	800		3AC	1	S-64	SISKIYOU	700	800	
H506	2	205++	LAVA	700	800		2PJ	1	UH-60	SISKIYOU	700	800	
82D	2	UH-1F	LAVA	700	800		3TW	1	UH-60	SISKIYOU	700	800	Days Off Fri-Sat
H517	2	212HP	LAVA	700	800		25M	1	S-64	SISKIYOU	700	800	
H509	2	BELL 209	LAVA	700	800	Maintenance Phase							
3JR	3	AS-350-B3E	LAVA	700	800	SHORTHAUL							
2JG	3	Bell L3	LAVA	700	800	HLCO							

FIXED WING ( Use Page 2 if Needed )													
FAA #	Type	Make/Model	Base	Avail	Start	Remarks	FAA #	Type	Make/Model	Base	Avail	Start	Remarks
AA 52			REDDING	800	900	Primary AA							

Planned Missions ( Includes: Water Dropping, Retardant, Recon, Rescue, Cargo, Personnel Transport, Air Attack, HLCO, etc.)					
Mission	Aircraft	Start Time	Departure Point	Destination	Instructions For Aircraft or Name of Personnel or Type of Cargo (if applicable)
WATER DROPPING					AS REQUESTED
RECON					AS REQUESTED
RETARDANT					AS REQUESTED

**Notes:**  
 WATER TENDERS ASSIGNED TO DIPSITE: E-23,E-24,E-25,E-26,E-30,E-239 CRASH RESCUE E-32 at Lava Helibase  
 WATER TENDER assigned to Siskiyou Helibase: E-138 CRASH RESCUE E-205 at Siskiyou  
 FIREWATCH ON MAINTENANCE PHASE FOR A FEW DAYS

**Incident:**  
Lava CA-SHF-000949

**Date:**  
7-4-21 thru 7-5-21

**Operational Period:**  
0600-0600



# ***SAFETY MESSAGE***

*Firefighter safety comes first on every fire, every time*



## **Weather Environment**

- Thunderstorm chances are diminishing, but Haines values are still high.
- Weather is remaining hot and dry and fuels moistures are 2 months ahead of normal for drying.
- Wind patterns around Mt Shasta are unique, be sure you understand the forecast and brief all crews on expected weather.

## **Fireline:**

- As mop up duties increase, remember fire weakened trees are more at risk of coming down as time passes. Evaluate and re-evaluate your work area for hazards and mitigate before engaging deep interior mopping up.
- FBAN continues to remind us of consecutive days of record ERCs and critical fuel moistures. Consider that info with the expected weather during your planning (see weather above).
- **Another reason why a strong LCES plan is critical.** It is your best tool to avoid an entrapment.

## **Transportation issues:**

- Highway 97 may be closed, but there are still a lot of resources on it. Drive slower than you think and if your working on the side of the road **watch for traffic (fire).**
- Forest roads in the fire area are getting very dusty and after dark the smoke exacerbates the problem. Slow your speed, use your lights and work with DIVS to get some dust abatement.
- Lava rocks are very tough on tires. Be especially mindful when traversing rocky areas and when out there alone. Make sure someone knows where you are in case you damage a tire.
- **Night driving:** Combination of smoke inversion and dust makes visibility issues more problematic. Adjust your driving accordingly.

HAVE A SAFE SHIFT

Doug McKelvey/John Nickey Team 1 Safety

# INCIDENT ACTION PLAN RISK ASSESSMENT (ICS 215A)

1. Incident Name:		2. Incident Number:		3. Operational Period:		4. Location:				
Lava		CA-SHF-000949		July 4-5, 2021 0600-0600		Weed, Ca/Shasta National Forest				
5. Prepared by: (Last, First)		6. Prepared by: (Last, First)		7. Decision by: (Last, First)						
SOF1 Doug McKelvey/John Nickey		OSC1 Chad Cook/Billy Steers/Shane Santos(t)		ICT1 Jerry McGowan/Ken Kempter/Curtis Coots(t)						
Identify Hazards		Assess Hazards		Develop Controls		Make Risk Decisions		Implement		
8. Task	9. Hazard	10. Hazard Probability	11. Severity	12. RAC	13. Identify hazard mitigations & controls (press full + enter to act, a line)	14. Hazard Probability	15. Severity	16. RAC	17. Task Necessary?	18. Hazard Control Assigned to:
Line Construction All	Entrapment - Rapid Change in Fire Behavior	Possible	Catastrophic	Extremely High	<ul style="list-style-type: none"> <li>Utilized full PPE in fire area at all times</li> <li>Implement LCES plan that accounts for extreme conditions.</li> <li>Disengage at first sight of trouble and reassess.</li> <li>Monitor Vx hourly and communicate findings to all.</li> <li>Identify or construct safety zones adequate for personnel assigned to the area.</li> </ul>	Unlikely	Critical	Moderate	YES	SUPERVISORS
Direct Line Construction - Hand tools/Saws	Lava Beds	Likely	Moderate	High	<ul style="list-style-type: none"> <li>Slow down and be sure of your footing.</li> <li>Wear gloves at all times</li> <li>Flag vehicle tubes and pass on info.</li> <li>Be mindful of tire damage when driving through lava beds.</li> </ul>	Possible	Moderate	Moderate	YES	DIVS
Multiple	Hit by Tree/ snag/Branch	Possible	Critical	High	<ul style="list-style-type: none"> <li>Follow "Hazard Tree Safety" guidelines, IRPG page 22-23.</li> <li>Post lookouts or use a spotter in mop-up areas that have hazard trees</li> <li>Don't park vehicles or take breaks in high concentrations of hazard trees.</li> <li>Establish trigger points for disengagement during high wind events.</li> <li>Maintain a hazard zone of a minimum of 2 1/2 tree heights.</li> <li>Perform a risk assessment before entering area and ask why and is the gain worth the risk.</li> </ul>	Unlikely	Critical	Moderate	YES	DIVS
Bucket Work	Aircraft Mishap - General	Possible	Critical	High	<ul style="list-style-type: none"> <li>Ensure positive communication with all air resources</li> <li>Don't plan on air resources for medical transport or resupply</li> <li>Follow "Aviation Watch-Out Situations" IRPG Pg 46</li> <li>Refer to "Directing Bucket or Retardant Drops IRPG Pg 58</li> <li>Refer to "Aerial Retardant Safety" IRPG Pg 57</li> <li>Refer to "Aircraft Mishap Response Procedure" IRPG Pg 62</li> </ul>	Unlikely	Critical	Moderate	YES	INDIVIDUALS
Patrol/Secure Fires Edge/Mop-up	Marjuana Grows/Criminally Active Area	Likely	Moderate	High	<ul style="list-style-type: none"> <li>Do not enter areas unless there is a law enforcement presence.</li> <li>Be aware of the presence of toxic chemicals.</li> <li>Local criminal elements and organized crime can be involved in the organization.</li> <li>Anti-Personnel Devices (APD) may be present.</li> </ul>	Possible	Moderate	Moderate	YES	SUPERVISORS
Indirect Line Construction - Mechanical	Equipment - Crushed by Heavy Equipment/Rollover	Possible	Critical	High	<ul style="list-style-type: none"> <li>When working around a dozer or tractor plow, stay at least 100 feet in front or 50 feet behind the equipment.</li> <li>Allow no one but the operator to ride on the equipment.</li> <li>Operators will wear required personal protective equipment (PPE) and carry a fire snuffer.</li> <li>Refer to Pg 66 of IRPG.</li> </ul>	Unlikely	Critical	Moderate	YES	INDIVIDUALS
Direct Line Construction - Hand tools/Saws	Hit by Rolling Material in Steep Terrain	Possible	Moderate	Moderate	<ul style="list-style-type: none"> <li>Have a lookout in place for rolling material</li> <li>Place crewmembers in a staggered pattern to avoid moving debris on fire personnel</li> </ul>	Possible	Moderate	Moderate	YES	INDIVIDUALS

# INCIDENT ACTION PLAN RISK ASSESSMENT (ICS 215A)

All Incident Operational Tasks	Weather - Thunderstorms	Possible	Moderate	Moderate	Moderate	Possible	Moderate	Moderate	YES	INDIVIDUALS
					<ul style="list-style-type: none"> <li>• Reference IRPG P. 21 Thunderstorm Safety</li> <li>• Potential for localized heavy rain is increased. Prepare for wet, slippery roads.</li> <li>• Review and follow Thunderstorm Safety guidelines in IRPG page 21</li> <li>• Observe 30/30 Rule for lightning safety..... page 21, IRPG</li> </ul>					
Line Construction All	Medical - Heat Related Illness	Likely	Moderate	High	<ul style="list-style-type: none"> <li>~ Drink Fluids throughout operational period (6-8 quarts/shift).</li> <li>~ Maintain water/electrolyte ratio of 3 to 1.</li> <li>~ Carry extra water on line and cache water at drop points.</li> <li>~ Take frequent breaks, minimum of 10 minutes every hour.</li> <li>~ Allow out of area resources to acclimate before expecting peak performance.</li> <li>~ Recognize symptoms of HEAT RELATED INJURY.</li> </ul>	Unlikely	Moderate	Low	YES	INDIVIDUALS
Multiple	Power Utilities	Unlikely	Critical	Moderate	<ul style="list-style-type: none"> <li>~ Refer to the IRPG pages 24-25 for Power Line Safety.</li> <li>~ Notify all personnel of down electrical lines.</li> <li>~ Always treat downed wires as energized, even old telegraph lines.</li> <li>~ Identify and avoid high tension transmission lines.</li> </ul>	Unlikely	Moderate	Low	YES	INDIVIDUALS
Line Construction All	Railway Activity	Possible	Moderate	Moderate	<ul style="list-style-type: none"> <li>• Post a lookout when working on or near tracks</li> <li>• Only spend as much time on or crossing tracks as absolutely necessary.</li> <li>• Look up and down tracks at crossings.</li> </ul>	Unlikely	Moderate	Low	YES	INDIVIDUALS

<b>INCIDENT RADIO COMMUNICATIONS PLAN (ICS 205)</b>		Incident Name <b>LAVA</b>		Date/Time Prepared <b>7/03/2021 1500</b>		Operational Period Date/Time <b>7/04/2021 0600 - 7/05/2021 0600</b>	
---	--	------------------------------	--	---	--	--	--

**Utilization of any frequency other than those listed on this form are prohibited, subject to fines by the FCC and demobilization from the incident.**

Zn Ch	Function	Channel Name/Trunked Radio System Talkgroup	Assignment	RX Freq	N or W	RX Tone/NAC	TX Freq	N or W	TX Tone/NAC	Dev	Pwr	Mode	Remarks
1	COMMAND	SHFR	SHASTA FOREST	171.5750		CSQ	165.0125		Tone 15 162.2	N	H	A	BACK-UP, I/A ONLY
2	COMMAND	NIFC C1	ALL DIVS	170.9750		CSQ	168.7000		Tone 1 110.9	N	H	A	WEED
3	COMMAND	NIFC C9	ALL DIVS	170.0125		Tone 1 110.9	165.2500		Tone 1 110.9	N	H	A	ANTELOPE
4	COMMAND	NIFC C29	ALL DIVS	171.5375		Tone 1 110.9	164.8625		Tone 1 110.9	N	H	A	HERD PEAK
5	TACTICAL	NIFC TAC 2	I/A ONLY	168.2000		CSQ	168.2000		NONE	N	H	A	I/A ONLY
6	TACTICAL	NIFC TAC 1	DIV A	168.0500		Tone 1 110.9	168.0500		Tone 1 110.9	N	L	A	BRANCH I
7	TACTICAL	NIFC TAC 3	DIV E / CONTINGENCY EAST	168.6000		Tone 1 110.9	168.6000		Tone 1 110.9	N	L	A	BRANCH I
8	TACTICAL	NIFC TAC 5	DIV P/R DAY	166.7250		Tone 1 110.9	166.7250		Tone 1 110.9	N	L	A	BRANCH III
9	TACTICAL	NIFC TAC 6	DIV N & NIGHT DIV N/P/R	166.7750		Tone 1 110.9	166.7750		Tone 1 110.9	N	L	A	BRANCH III
10	TACTICAL	NIFC TAC 7	AVAILABLE	168.2500		Tone 1 110.9	168.2500		Tone 1 110.9	N	L	A	BRANCH III
11	TACTICAL	CDF TAC 24	DIV T / Z	151.3325		Tone 16 192.8	151.3325		Tone 16 192.8	N	L	A	BRANCH V
12	TACTICAL	CDF TAC 25	CONTINGENCY WEST	159.2775		Tone 16 192.8	159.2775		Tone 16 192.8	N	L	A	BRANCH III
13	Air-to-Ground	A/G TAC	ALL DIVS	169.1500		CSQ	169.1500		NONE	N	L	A	
14	Air-to-Ground	A/G CMD	ALL DIVS	167.9500		CSQ	167.9500		NONE	N	H	A	INCIDENT WIDE
15	TACTICAL	CALCORD	ALL DIVS	156.0750		Tone 6 156.7	156.0750		Tone 6 156.7	N	L	A	MEDICAL
16	EMERGENCY	AIR GUARD	EMERGENCY	168.6250		CSQ	168.6250		Tone 1 110.9	N	L	A	EMERGENCY ONLY

Prepared By (Communications Unit Leader) *Scott La Rue*  
**Scott La Rue and Jeff Carter, COM1 (279) 203-4498 24/7 Number**

Incident Location: WEED  
 Forest / Unit / Jurisdiction: SHASTA NF  
 County: Siskiyou State: CA  
 Latitude: " N Longitude: W

The convention calls for frequency lists to show four digits after the decimal place (five digits for 700 MHz frequencies). The letter "U", "N", or "W" in the deviation (Dev) column reflects whether the frequency is ultranarrow (6.25 kHz), narrow (12.5 kHz) or wide band (25 kHz). Mode refers to either "A" indicating Analog, "D" indicating Digital (e.g. Project 25) or "M" indicating Mixed Mode. All channels are shown as if programmed in a control station, mobile or portable radio. Repeaters (and depending on use, base stations) must be programmed with the Rx and Tx reversed.







# ***Training Specialist - Lava Fire***

## **The Training Specialist is working remotely. Training Specialist Contact Information:**

- Bob Rivelle
- Call/Text: 707.498.1761 (Available daily between 0600 and 2200)
- Email: robert\_rivelle@nps.gov

## **How to register as a Trainee:**

1. Use the QR code below. If you're unable to register using the QR code, please call me anytime at 707.498.1761.
2. Once registered, you will receive text and email updates.

## **How to close-out your training assignment:**

1. **Trainer:** Complete and Evaluation Record in the back of the Position Task Book and make as many entries as possible within the individual tasks. Discuss this with your Trainee.
2. **Trainer:** Complete an individual performance rating (ICS 225) and go over the performance rating with your Trainee.
3. **Trainee:** Text or email a photo of your Evaluation Record from the back of the Task Book that your Trainer just completed for this assignment.
4. **Trainee:** Text or email a photo of your individual performance rating (ICS 225) to the Training Specialist.
5. **Trainee:** Once completed, the Trainee and the Training Specialist will have a brief conversation to discuss the Task Book and assignment.
6. **Done**, except for safe travels home!

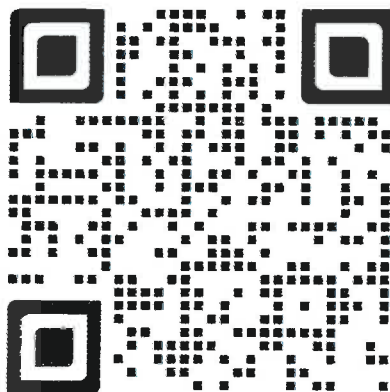
**Training Registration QR Code:**



## LAVA DMOB PROCESS

The Lava Fire DMOB list will be available in the evenings using the QR Code found on the cover of the IAP– DMOB List

- I. ALL Federal Agency, Local Government and OES resources
  - A. Report to ICP at College of the Siskiyous for DMOB to Include
    1. Communications Unit
    2. Supply Unit
      - a) Provide a detailed completed ICS 213 signed by appropriate Division/Group Supervisor for equipment replacement.
      - b) All ICS 213 requests for S#'s need to be approved through Fed Finance for approval
    3. Ground Support ( 1 ½ Miles North of the 5 Fwy on the Hwy 97 at the Old Mill)
    4. Finance (OES Rep for Local Government and OES)
    5. DMOB Unit
- II. Cal Fire Resources (10000 #'s)
  - A. Report to ground support 1<sup>st</sup> at Siskiyou County Roads Department (279 Sharps Road, Yreka) for mechanical inspection
  - B. When complete with ground report Cal Fire Finance (Building 8) at the College of the Siskiyous.
  - C. When complete with Finance report to incident DMOB to complete the DMOB Process.



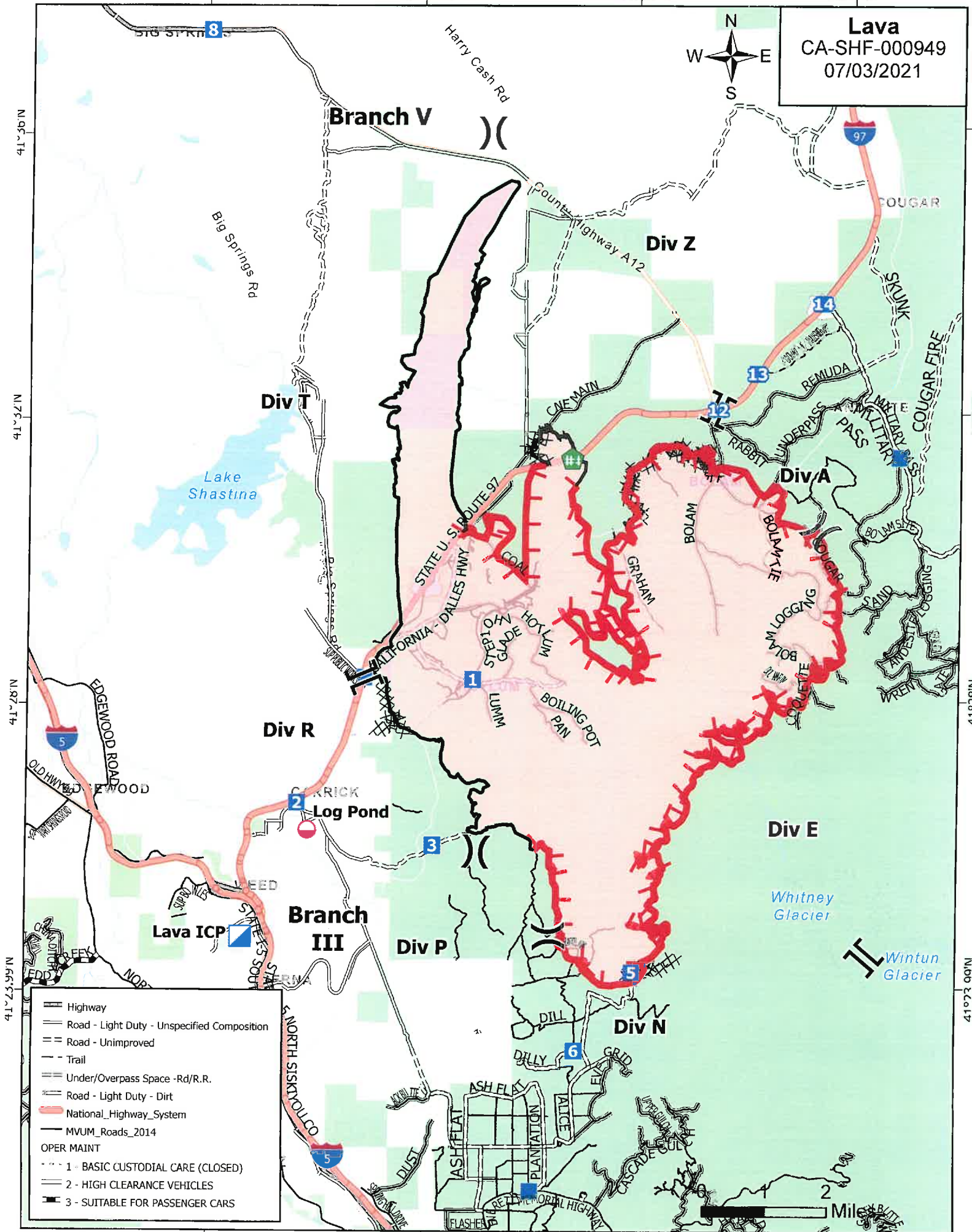
122°24'W

122°20'W

122°16'W

122°12'W

**Lava**  
 CA-SHF-000949  
 07/03/2021



41°36'N  
 41°32'N  
 41°28'N  
 41°23.99'N

121°56'W  
 121°52'W  
 121°48'W  
 121°43.99'W

122°24'W

122°20'W

122°16'W


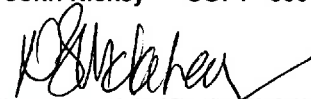
122°12'W







# MEDICAL PLAN (ICS 206 WF) CIIMT 1

<b>1. Incident Name</b>				<b>2. Operational Period</b>				
<b>Lava Fire</b>				Date/Time: <b>07/04/2021 24 Hours 0600-0600</b>				
<b>3. EMS / Ambulance Services</b>								
Name	Location		Contact Method		Advanced Life Support (ALS) Yes No			
Mountain Medics	ICP		Walk Up 530-605-5205		XX			
Medic 3 – 24 Hours	DP 12		Contact on Command		XX			
Medic 5 – 24 Hours	DP 17		Contact on Command		XX			
REMS 1 – 12 Hour Day Only	Reference 204 for REMS Location		Contact on Command		XX			
Mt. Shasta Ambulance	1020 Oak St. Mt. Shasta, CA 96067		530-842-7066		XX			
<b>4. Air Rescue / Air Ambulance Services</b>								
Name	Contact		Type of Aircraft & Capability					
Helicopter 3JR	Lava Helibase		Type 3, BLS, Short Haul ( Day Only )					
CHP H14 / H16	Redding 530-226-2400		Type 3, ALS, Hoist ( Day Only )					
PHI Air Medical	Redding 530-226-2400		Type 3 Air Ambulance, ALS					
Reach 5	Redding 530-226-2400		Type 3 Air Ambulance, ALS					
<b>5. Hospitals (all times estimated from incident location)</b>								
Name & Level	GPS Datum – WGS 84 Degrees Decimal Minutes		Travel Time Air Ground		Phone	Helipad Yes No		Address
Mercy Mt. Shasta Medical Center	Lat:	N 41° 19.117'	5 Mins	20 Min s	ER 530-926-9360	XX		914 Pine St. Mt. Shasta, CA
	Long:	W 122° 19.203'						
Fairchild Medical Center	Lat:	N 41° 43.164'	10 Mins	30 Min s	ER 530-841-6292	XX		444 Bruce St. Yreka, CA
	Long:	W 122° 38.741'						
Mercy Medical Center Level 2 Trauma STEMI / Stroke	Lat:	N 40°34.33	20 Mins	1.25 Hrs	ER 530-225-7201	XX		2175 Rosaline Ave. Redding, CA
	Long:	W 122°23.80						
Shasta Regional Medical Center	Lat:	N 40°35.160	20 Mins	1.25 Hrs	ER 530-244-5353	XX		1100 Butte St. Redding, CA
	Long:	W 122°23.262						
UC Davis Medical Center Level I Trauma / Burn	Lat:	N 38°33.293	1.75 Hrs	3.5 Hrs	ER 916-734-3790 Burn 916-734-3636	XX		2315 Stockton Blvd. Sacramento, CA
	Long:	W 121°27.317						
<b>6. Division / Crew Emergency Pre-Plan</b>								<i>Update and discuss with assigned resources daily.</i>
Fireline EMT / Medic's Division / Branch Location								
Air Hoist site location site: Lat: / Long: / Elevation:								
Helispot: Lat: / Long: / Elevation:								
<b>7. Prepared By (Medical Unit Leader)</b>			<b>8. Date/Time</b>		<b>9. Reviewed By (Safety Officer)</b>		<b>10. Date/Time</b>	
Brian Wisler MEDL 209-620-0660 Rodd Mascis MEDL 909-630-3969  			07/03/2021 1900		Doug McKelvey SOF1 510-453-3817 John Nickey SOF1 530-310-3537  		07/03/2021 1900	



# MEDICAL PLAN (ICS 206 WF) CIIMT 1

Medical Incident Report					
<b>FOR A NON-EMERGENCY INCIDENT, WORK THROUGH CHAIN OF COMMAND TO REPORT AND TRANSPORT INJURED PERSONNEL AS NECESSARY.</b>					
<b>FOR A MEDICAL EMERGENCY: IDENTIFY ON SCENE INCIDENT COMMANDER BY NAME AND POSITION AND ANNOUNCE "MEDICAL EMERGENCY" TO INITIATE RESPONSE FROM IMT COMMUNICATIONS/DISPATCH.</b>					
<b>Use the following items to communicate situation to communications/dispatch.</b>					
<b>1. CONTACT COMMUNICATIONS / DISPATCH</b> (Verify correct frequency prior to starting report) <i>Ex: "Communications, Div. Alpha. Stand-by for Emergency Traffic."</i>					
<b>2. INCIDENT STATUS:</b> Provide incident summary (including number of patients) and command structure. <i>Ex: "Communications, I have a Red priority patient, unconscious, struck by a falling tree. Requesting air ambulance to Forest Road 1 at (Lat./Long.) This will be the Trout Meadow Medical, IC is TFLD Jones. EMT Smith is providing medical care."</i>					
Severity of Emergency / Transport Priority	<input type="checkbox"/> <b>RED / PRIORITY 1 Life or limb threatening injury or illness. Evacuation need is IMMEDIATE</b> <i>Ex: Unconscious, difficulty breathing, bleeding severely, 2° – 3° burns more than 4 palm sizes, heat stroke, disoriented.</i> <input type="checkbox"/> <b>YELLOW / PRIORITY 2 Serious Injury or illness. Evacuation may be DELAYED if necessary.</b> <i>Ex: Significant trauma, unable to walk, 2° – 3° burns not more than 1-3 palm sizes.</i> <input type="checkbox"/> <b>GREEN / PRIORITY 3 Minor Injury or illness. Non-Emergency transport</b> <i>Ex: Sprains, strains, minor heat-related illness.</i>				
Nature of Injury or Illness & Mechanism of Injury			Brief Summary of Injury or Illness <i>(Ex: Unconscious, Struck by Falling Tree)</i>		
Transport Request			Air Ambulance / Short Haul/Hoist Ground Ambulance / Other		
Patient Location			Descriptive Location & Lat. / Long. <i>(WGS84)</i>		
Incident Name			Geographic Name + "Medical" <i>(Ex: Trout Meadow Medical)</i>		
On-Scene Incident Commander			Name of on-scene IC of Incident within an Incident <i>(Ex: TFLD Jones)</i>		
Patient Care			Name of Care Provider <i>(Ex: EMT Smith)</i>		
<b>3. INITIAL PATIENT ASSESSMENT:</b> Complete this section for each patient as applicable (start with the most severe patient) Patient Assessment: See IRPG PAGE 106					
Treatment:					
<b>4. TRANSPORT PLAN:</b> Evacuation Location (if different): <i>(Descriptive Location (drop point, intersection, etc.) or Lat. / Long.)</i> Patient's ETA to Evacuation Location:					
Helispot / Extraction Site Size and Hazards:					
<b>5. ADDITIONAL RESOURCES / EQUIPMENT NEEDS:</b> <i>Example: Paramedic/EMT, Crews, Immobilization Devices, AED, Oxygen, Trauma Bag, IV/Fluid(s), Splints, Rope rescue, Wheeled litter, HAZMAT, Extrication</i>					
<b>6. COMMUNICATIONS: Identify State Air/Ground EMS Frequencies and Hospital Contacts as applicable</b>					
Function	Channel Name/Number	Receive (RX)	Tone/NAC *	Transmit (TX)	Tone/NAC *
COMMAND					
AIR-TO-GRND					
TACTICAL					
<b>7. CONTINGENCY: Considerations:</b> If primary options fail, what actions can be implemented in conjunction with primary evacuation method? Be thinking ahead.					
<b>8. ADDITIONAL INFORMATION:</b> Updates/Changes, et c.					
<b>REMEMBER:</b> Confirm ETA's of resources ordered. Act according to your level of training. Be Alert. Keep Calm. Think Clearly. Act Decisively.					