



*CORRECTED*

*0930*

# INCIDENT ACTION PLAN

OPERATIONAL PERIOD

7/6/2021 0600 – 7/7/2021 0600

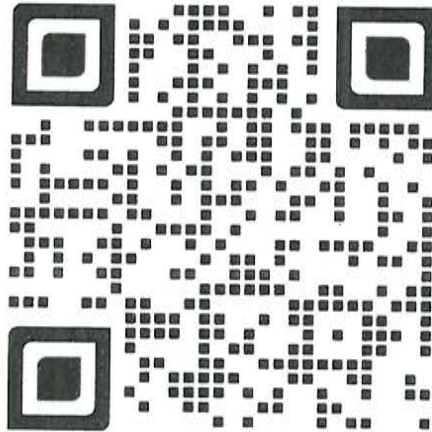
**Tuesday**

MAPs

IAP'S

DMOB LIST

TRAINING CHECK-IN



**LAVA FIRE**  
CA-SHF-000949  
P5 N3XW (0514)

0600 – Day Shift Ops Briefing

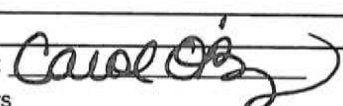
1700 – Planning Meeting

1800 - Operations Briefing





## ORGANIZATION ASSIGNMENT LIST (ICS 203)

<b>1. Incident Name:</b> LAVA FIRE		<b>2. Operational Period: Date From:</b> 7/6/2021 Time From: 0600		<b>Date To:</b> 7/7/2021 <b>Time To:</b> 0600	
<b>3. Incident Commander(s) and Command Staff:</b>			<b>7. Operation Section:</b>		
IC/UC's	Jerry McGowan / Darryl Laws / Curtis Coots(t)	Operations	Chad Cook / Kerri Gilliland(t)		
Deputy	Ken Kempter	Planning Ops	Chris Childers / Shawn Raley / Trevor Johnson (t)		
Safety Officer	John Nickey / Doug McKelvey	Night Ops	Billy Steers		
Information Officer	Kristin Allison / Derek Tsigner	Staging Area			
Liaison Officer	Jake Fuller	<b>Branch</b>	<b>I</b>	<b>Travis Thane</b>	
<b>4. Agency/Organization Representatives:</b>		Division/Group	A	Abel Mata / Joshua Dominguez(t)	
Agency/Organization	Name	Division/Group	E	Rich Ingram / Mathew Muller(t)	
SHF Agency Admin	Carolyn Napper	Division/Group	ROADS GROUP	Billy Covert	
CHP	Robert Lynam	Division/Group			
Timber Industries Lia	Darin Quigley	Division/Group			
Roseburg Forest	Ryan Duchii	<b>Branch</b>	<b>III</b>	<b>Peter Tolosano / Shane Santos(t)</b>	
Union Pacific RR	Gene Womack	Division/Group	N	Mike Carter / Jonathan Duncan(t)	
Lake Shatina FD	Steven Pappas	Division/Group	P/R	Juan Molve / John Hunt(t)	
Weed Fire	Brian Carter	Division/Group			
Siskiyou County SO	Lt Ben Whetstine	Division/Group			
OES	Patrick Titus	Division/Group			
		<b>Branch</b>	<b>V</b>	<b>Kent Cunningham</b>	
		Division/Group			
		Division/Group			
		Division/Group			
<b>5. Planning Section:</b>		Division/Group			
Chief	Robert Burnside	Division/Group			
Deputy	Carol O'Bryan	Division/Group			
Resource Unit	Danny Douglas / Gwyndolyn Ozard	<b>Branch</b>			
Situation Unit	Robert Verdie / Jonathon Pangburn	Division/Group	NIGHT	Daniel Cedeno	
Documentation Unit	Jocelyn Howell (t)	Division/Group			
Demobilization Unit	Brian Dameron	Division/Group			
GISS	James Roberts / M. Hans / S. Dinar(t)	Division/Group			
FBAN	Mike Beasley / Patrick Doyle (T)	Division/Group			
IMET	Eric Kurth	Division/Group			
Training Tech Spec	Bob Rivelle	<b>Air Operations Branch</b>		<b>Director:</b>	<b>Jason Nava</b>
ITTS	Ulysses Huerta / Jake Huerta	Air Support Group Supervisor		Tyler Detrick	
READ	Nick Meyers	Helibase Manager			
COVID Advisor	Melissa Ann Conway				
HR	Janine Summy				
<b>6. Logistics Section</b>					
Chief	Rich Davis / Dan Turner				
Supply Unit	Mani Bouslaugh				
Facilities Unit	Nick Sablan	<b>8. Finance/Administration Section:</b>			
Ground Support Unit	David Trussell	Chief	Amy Lee		
Communications Unit	Scott LaRue	Time Unit	Renee Smith		
Medical Unit	Rod Mascis / Brian Wisler	Procurement Unit	Paul Wood		
		Comp/Claims Unit	Jodi Glover		
		Cost Unit	Lee Piper		
<b>Prepared By: Name:</b> Robert Burnside		<b>Position/Title:</b> PSC		<b>Signature:</b> 	
<b>ICS 203</b>		<b>Date/Time:</b> 7/5/2021 2300 hours			



**Fire Weather Forecast**



**FORECAST NO:** 11  
**PREDICTION FOR:** 7/6-7/2021  
**SHIFT DATE:** Day & Night (0700-0700)  
**FORECAST ISSUED:** 1930 7/5/2021

**NAME OF FIRE:** Lava Fire  
**UNIT:** CA-SHF  
**SIGNED:** *Eric C. Kurth*,  
Incident Meteorologist  
[eric.kurth@noaa.gov](mailto:eric.kurth@noaa.gov) (240)-778-5292

...Hot and Dry Weather Continues...  
...Breezy Afternoon Winds...

**WEATHER DISCUSSION:** Sunny with some local patchy smoke and haze. Inversion will break shortly after dawn. Winds are expected to be light and variable in the early morning, becoming breezy southerly by mid-morning. South winds increase in the afternoon with gusts to 15 to 25 mph, peaking in the mid-afternoon. Hot weather is expected, with afternoon high temperatures near 100 in the valleys and a little lower minimum humidity. Unstable conditions with Haines 5. General winds over the northern portion of the fire shift to northwest around 1900 PDT. Winds decrease after midnight becoming downslope/down-canyon winds after midnight. Morning low temperatures should be fairly mild and humidity recoveries moderate.

**WEATHER FORECAST TODAY:**

**WEATHER:** Sunny. Haze with local smoke near active fire.  
**MAX TEMPERATURES:** 98-101 valleys and 86-92 ridges.  
**MIN HUMIDITY:** 9-15 percent valleys and 18-24 percent ridges.

**20 FT WINDS:**

**UPPER SLOPE/RIDGETOP** – Light downslope winds becoming southwest 5 to 10 mph by mid-morning, gusting up to 20 mph mid-afternoon into the evening for the southern portion of the fire. For the northern portion of the fire winds shift to the west northwest 5 to 10 mph with gusts to 18 mph in the mid-afternoon.

**LOWER SLOPE/VALLEY** - Light downslope winds becoming southwest 6 to 12 mph with gusts to 25 mph in the afternoon. For the northern portion of the fire area winds shift to west northwest 4 to 8 mph around 1900 PDT.

**HAINES INDEX:** 5

LAL: 1

**STABILITY/INVERSION:** Morning inversion with smoke laying down, breaking around 1100 PDT.

**WEATHER FORECAST TONIGHT:**

**WEATHER:** Mostly clear with smoke.  
**MIN TEMPERATURES:** 63-68 valleys and 60-66 ridges.  
**MAX HUMIDITY:** 40-50 percent valleys and 35-45 percent ridges.

**20 FT WINDS:**

**UPPER SLOPE/RIDGETOP** - South winds 6 to 12 mph with gusts to 20 mph early evening, becoming south 5 to 10 mph after 2000 PDT. For the northern portion of the fire winds shift to the west north 5 to 10 mph with gusts to 15 mph in the early evening, starting around 1800 PDT. Winds overall decrease after 2200 PDT, becoming downslope 2 to 5 mph overnight.

**LOWER SLOPE/VALLEY** - South 5 to 8 mph with gusts to 15 mph early evening. For the northern portion of the fire area winds shift to northwest 5 to 10 mph with gusts to 18 mph in the early evening, starting around 2000 PDT. Winds overall decrease after 2400 PDT, becoming variable 1 to 4 mph overnight.

**HAINES INDEX:** 5

LAL: 1


**STABILITY/INVERSION:** Inversion develops after midnight with smoke laying down.

**Outlook:** Hot and dry weather early this week, with slightly less hot weather mid-week. More significant heat returns for the weekend.

Scan for current local weather observations:



# FIRE BEHAVIOR FORECAST

FORECAST NUMBER: 13	TYPE OF FIRE: Wildfire
FIRE NAME: Lava	OPERATIONAL PERIOD: Day 0600 – 1800, 7/6/2021 Night 1800 - 0600, 7/6 - 7/2021
DATE ISSUED: July 5, 2021	TIME ISSUED: 1800
UNIT: Shasta Trinity NF, Mt. Shasta RD	SIGNED: /s/  Mike Beasley, FBAN

## INPUTS

### WEATHER SUMMARY

**\*See IMET Weather Forecast\***

**Discussion:** Sunny with some local patchy smoke and haze. Inversion will break shortly after dawn. Increasing afternoon winds. A brief shift to northwest winds over the northern portion of the fire in the evening around 1900 hrs. Winds decrease through late evening becoming downslope/downcanyon after midnight.

**Max. Daytime Temps:** 98-101° valleys, 86-92° ridges      **Min. Nighttime Temps:** 63-68° valleys, 60-66° ridges  
**Min Daytime RH:** 9-15% valleys and 18-24% ridges      **Max. Nighttime RH:** 40-50% valleys, 35-45% ridges  
**20' Winds:** Upper elevations: SW 5-12 mph w/ gusts to 20 mph. On northern portions of the fire, 5-10 mph winds shift out of the WNW starting around 1800, then decreasing to downslope 2-5 mph overnight.  
Lower elevations: SW 6-12 mph w/ gusts to 25 mph, becoming NW 5-10 mph over northern portions of the fire starting around 200 PDT. Winds overall decrease after 2400 PDT then becoming variable 1-4 mph overnight.

## FIRE BEHAVIOR

**GENERAL: \*\*\*Any slopover or spot fires will burn very actively with stronger winds. Haines Index = 5\*\*\***

**ERC is 72 (Mt. Shasta RAWS #40217)**

- **Fuels:** Below average winter snowpack and very hot, dry windy conditions have created burning conditions one to two months ahead of average. Surface fuels consist of manzanita, mountain mahogany & sage and with scattered second growth ponderosa pine and mixed conifer in the overstory best represented by Scott and Burgan's SH5 and TL8 fuel models. ERC's and 1000-hour fuel moistures are *between the 90<sup>th</sup> and 97<sup>th</sup> percentile, setting records for dryness for this time of year.* 1000-hour dead fuel moistures are below 10% and live brush fuel moistures are near 100%.
- **Topography:** Aspect is primarily west and north on the rugged, lava flow flanks of Mt. Shasta. The elevation range is 2800' - 7800' and slopes range from 20 to 70%. The lava rock creates difficult access and a high resistance to control.

### SPECIFIC FIRE BEHAVIOR:

Isolated torching near the head of the fire after winds pick up in the afternoon. Be aware of interior islands that might burn causing spot fires outside control lines. If current lines hold, the following fire behavior would be for a spot fire or other slopover. Isolated and short duration crown fire runs in mixed conifer and shrub understory remain possible in the afternoon if winds and continuous fuels align. Shrub fuels alone w/o a timber litter component are a wind-dependent fuel due to patches of bare ground. Potential *daytime maximum headfire behavior* (reduce these numbers by approximately ½ for flanking fire and ¾ for backing fire):

- Shrub: 12 - 30' flame lengths, 40 - 180 chs/hr rate of spread
- Mixed Conifer: 3 - 10' flame lengths, 6 - 28 chs/hr rate of spread
- Torching/short duration timber crownfire: 100 - 150' flame lengths, 90 chs/hr rate of spread
- Spotting distance up to ½ mile spotting distances with 70-93% probability of ignition

**DIV's P/R/T/Z:** Direct dozer and handlines continue to hold w/ additional mop-up. Escapes could spread toward Weed, Carrick and Lake Shastina.

**DIV's A/E:** This remains the most active portion of fire throughout the day under southwesterly and, briefly, northerly winds around 1800-2200 PDT. Perimeter in Div A is near a large patch of whitebark pine mortality east of Bolam Creek at the 7400' level. Fire behavior would increase dramatically in this area due to a heavy loading of dead & down fuel. Watch for battling winds as diurnal winds turn from the south (upslope) to north (downslope).

**DIV N:** Some heat remaining in the rocks near Diller Canyon generating interior smokes with a low likelihood of escape. Escape could threaten Mt. Shasta City.

## AIR OPERATIONS

- Sunset 07/06 @ 2046 hours, Sunrise 7/07 @ 0543 hours. Light smoke inversion likely setting in after midnight, but should not impact morning air operations.

## SAFETY

- Seeing many dust devils in the burn interior is an indicator of atmospheric instability. This is conducive to the development of large plumes over fires.

# ASSIGNMENT LIST (ICS 204 WF)

CONTROLLED UNCLASSIFIED  
INFORMATION//BASIC

<b>1. Incident Name:</b> <b>LAVA FIRE</b>	<b>2. Operational Period:</b> Date From: 07/06/21    Date To: 07/07/21 Time From: 0600    Time To: 0600	<b>3. Branch</b> <b>Division</b>  <b>I</b> <b>A</b>
--	---	---


<b>4. Operations Personnel:</b> Operations Section Chief: <b>Chad Cook / Kerri Gilliland(t)</b> Branch Director: <b>Travis Thane</b> Division/Group Supervisor: <b>Abel Mata / Joshua Dominguez(t)</b>	Night Ops: <b>Billy Steers</b> Branch Safety: Air Attack:
---	---

5. Resources Assigned:	** Resources Below in Bold are 12 Hour **							
Resource Identifier	ALS	LWD	Leader	Personnel	Request #	Hours	Reporting Location	
CRW2IA PVT FIRESTORM 15A		<del>7/13</del>	<del>BEN PAVAN</del>	20	C-13	0600-1800	LAVA ICP	
CRW2IA PVT FIRESTORM 17		7/12	ALEX RHEA	20	C-31	0600-1800	LAVA ICP	
CRW2 PVT C-61 BIRRUETA		7/16	PAZ, CHRISTIAN	12	C-61	0600-1800	LAVA ICP	
CRW2 PVT C-63 R & R		7/18	MARCO ROCHA	20	C-63	0600-1800	LAVA ICP	
CRW2 PVT C-64 R & R		7/18	RANGEL, ISMAEL	20	C-64	0600-1800	LAVA ICP	
CRW2 PVT C-68 FRANCO		7/18	ALCANTAR, JOAN	20	C-68	0600-1800	LAVA ICP	
CRW2 PVT MOUNTAINEER C-69		7/18	MARICIO	20	C-69	0600-1800	LAVA ICP	
CRW2 PVT C-76 COBRAS		<del>7/18</del>	<del>ALVAREZ, FIDEL</del>	19	C-76	0600-1800	LAVA ICP	
STC SHF 3675C		7/11	FLYN, SCOTT	27	E-107	1800-0600	LAVA ICP	
ENG3 ENF 314		7/14	HOFFMAN, CASEY	5	E-72	0600-1800	LAVA ICP	
ENG3 PNF 323		7/10	BRENZOVICH, THOMAS	5	E-48	0600-1800	LAVA ICP	
ENG3 INF 331		7/13	HUBBARD, BLAKE	5	E-71	0600-1800	LAVA ICP	
ENG3 SQF 332		7/13	WORKMAN, DALTON J	5	E-74	0600-1800	LAVA ICP	
ENG3 TMU 341		7/11	KING, TED J	5	E-47	0600-1800	LAVA ICP	
ENG3 353 #6219		7/7	KOLKMANN, MATTHEW	5	E-77	0600-1800	LAVA ICP	
ENG3 NORTHWEST FPD 423		7/14	RAFFERTY, TREVOR	4	E-78	0600-1800	LAVA ICP	
DOZ2 ENF 3		7/11	LANGENDERFER, DAN	4	E-57	0600-1800	LAVA ICP	
DOZ2 PVT E-69 T & S		7/13	ONTANO, JAMES	4	E-69	0600-1800	LAVA ICP	

**6. Work Assignments:**  
**TASK:** Tactical Patrol. Eliminate hazards and mop-up where necessary. Complete suppression repair where appropriate.  
**PURPOSE:** To eliminate threats to the fire line. Repair fire suppression effort damages.  
**END STATE:** Fire containment and recovery.

**7. Special Instructions:**  
  
 Back haul all trash and equipment.

8. Communications							
Name	Ch	Function	Rx Freq	Rx Tone	Tx Freq	Tx Tone	Notes
NIFC C29	4	COMMAND	171.5375	110.9 (T1)	164.8625	110.9 (T1)	
NIFC TAC 1	6	TACTICAL	168.0500	110.9 (T1)	168.0500	110.9 (T1)	
A/G TAC	13	AIR TO GROUND	169.1500	CSQ	169.1500	NONE	
A/G CMD	14	AIR TO GROUND	167.9500	CSQ	167.9500	NONE	
AIR GUARD	16	EMERGENCY	168.6250	CSQ	168.6250	110.9 (T1)	

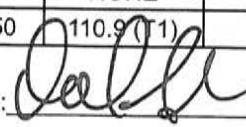
**9. Prepared by: Name:** Danny Douglas    RESL  
 Signature:   
**ICS 204**    Date/Time: 7/5/2021    2200    Personnel Count: 220





# ASSIGNMENT LIST (ICS 204 WF)

CONTROLLED UNCLASSIFIED  
INFORMATION//BASIC

<b>1. Incident Name:</b>		<b>2. Operational Period:</b>				<b>3. Branch</b>		<b>Division</b>	
<b>LAVA FIRE</b>		Date From: 07/06/21		Date To: 07/07/21		<b>I</b>		<b>E</b>	
		Time From: 0600		Time To: 0600		<b>Page 1 of 2</b>		<b>Echo</b>	
<b>4. Operations Personnel:</b>									
Operations Section Chief: <b>Chad Cook / Kerri Gilliland(t)</b>					Night Ops: <b>Billy Steers</b>				
Branch Director: <b>Travis Thane</b>					Branch Safety:				
Division/Group Supervisor: <b>Rich Ingram / Mathew Muller(t)</b>					Air Attack:				
<b>5. Resources Assigned:</b>									
<b>** Resources Below in Bold are 12 Hour **</b>									
Resource Identifier	ALS	LWD	Leader	Personnel	Request #	Hours	Reporting Location		
CRW1 ELK MT IHC		7/10	<b>REYES, REYMUNDO</b>	21	C-4	0600-1800	LAVA ICP <b>SPIKE</b>		
CRW1 TAHOE IHC		7/10	<b>GERBER, DANNY</b>	21	C-5	0600-1800	LAVA ICP <b>SPIKE</b>		
CRW1 SALMON RIVER IHC		7/9	<b>STOCKER, CODY</b>	19	C-6	0600-1800	LAVA ICP <b>SPIKE</b>		
CRW1 KLAMATH IHC		7/6	<b>ZINK, ANDREW S</b>	19	C-12	0600-1800	LAVA ICP		
<del>CRW2IA TRINITY</del>		<del>7/9</del>	<del>DIAS, TRISTAN</del>	20	C-1	0600-1800	LAVA ICP		
<del>CRW2IA MILLER TIMBER 11B</del>		<del>7/13</del>	<del>SCOTT, TANNER</del>	20	C-26	0600-1800	LAVA ICP		
CRW2IA PVT PATRICK 20A		7/12	<b>AUSTIN HERGERT</b>	20	C-46	0600-1800	LAVA ICP		
CRW2 C-60 OC 23		7/15	<b>BLANCAS, RUDY</b>	17	C-60	0600-1800	LAVA ICP		
CRW2 PVT C-71 BIRRUETA		7/18	<b>BIRRUETA, TONY</b>	20	C-71	0600-1800	LAVA ICP		
WFM KNF GRASS LAKE		7/9	<b>JOHNSON, WILLIAM</b>	7	O-2	0600-1800	LAVA ICP		
STC LNF 3615C		7/10	<b>BRIAN MARTIN</b>	27	E-33	0600-1800	LAVA ICP		
ENG4 PVT NATIONAL E-253		7/18	<b>CHUCK MURDUA</b>	3	E-253	0600-1800	LAVA ICP		
ENG3 LEFTHAND 4105		7/18	<b>SAMUELSON, CHRIS</b>	3	E-257	0600-1800	LAVA ICP		
ENG6 PSF 11		7/17	<b>NEWMAN, CHUCK</b>	5	E-250	0600-1800	LAVA ICP		
ENG6 PVT R2K E-254		7/17	<b>STILLSMOKING, STILL</b>	3	E-254	0600-1800	LAVA ICP		
ENG3 BRUSH 4632 E-255		7/17	<b>DENNISON, PAUL</b>	3	E-255	0600-1800	LAVA ICP		
ENG6 Rocky Point 320		7/17	<b>RAMSEY, CHRIS</b>	3	E-260	0600-1800	LAVA ICP		
ENG6 Rocky Point 324		7/17	<b>RACICOT, GERG</b>	3	E-259	0600-1800	LAVA ICP		
<b>6. Work Assignments:</b>									
TASK: Continue direct line construction to Bolam Creek. Mop up control line to extent necessary.									
PURPOSE: To minimize the likelihood of escape from control lines.									
END STATE: Fire containment.									
<b>7. Special Instructions:</b>									
Back haul all trash and equipment.									
<b>8. Communications</b>									
Name	Ch	Function	Rx Freq	Rx Tone	Tx Freq	Tx Tone	Notes		
NIFC C29	4	COMMAND	171.5375	110.9 (T1)	164.8625	110.9 (T1)			
NIFC TAC 3	7	TACTICAL	168.6000	110.9 (T1)	168.6000	110.9 (T1)			
A/G TAC	13	AIR TO GROUND	169.1500	CSQ	169.1500	NONE			
A/G CMD	14	AIR TO GROUND	167.9500	CSQ	167.9500	NONE			
AIR GUARD	16	EMERGENCY	168.6250	CSQ	168.6250	110.9 (T1)			
<b>9. Prepared by: Name:</b>									
Danny Douglas				RESL					
Signature: 									
Date/Time: 7/5/2021 2200									
Personnel Count: 234									

# ASSIGNMENT LIST (ICS 204 WF)

CONTROLLED UNCLASSIFIED  
INFORMATION//BASIC

<b>1. Incident Name:</b> <p style="text-align: center; font-weight: bold;">LAVA FIRE</p>	<b>2. Operational Period:</b> Date From: 07/06/21    Date To: 07/07/21 Time From: 0600    Time To: 0600	<b>3. Branch</b> <b>Division</b> <p style="text-align: center; font-size: 2em; font-weight: bold;">I                      E</p>
---	---	--

<b>4. Operations Personnel:</b>		Page 2 of 2    Echo
Operations Section Chief: <b>Chad Cook / Kerri Gilliland(t)</b> Branch Director: <b>Travis Thane</b> Division/Group Supervisor: <b>Rich Ingram / Mathew Muller(t)</b>	Night Ops: <b>Billy Steers</b> Branch Safety: Air Attack:	

5. Resources Assigned:		** Resources Below in Bold are 12 Hour **					
Resource Identifier	ALS	LWD	Leader	Personnel	Request #	Hours	Reporting Location
ENG6 CARROLL E-263		7/18	LITTLE, JOSH	3	E-263	0600-1800	LAVA ICP
DOZ3 PVT E-121 LONESTAR		7/13	HARRIS JACKSON	4	E-121	0600-1800	LAVA ICP
DOZ3 PVT E-122 CATTANEO		7/13	GORDON, MIKE	2	E-122	0600-1800	LAVA ICP
W/T SSL 23		7/12	EHRENBERG, SHAWN	2	E-105	0600-1800	LAVA ICP
W/T PVT E-85 49ER		7/17	SASSER, DICK	1	E-85	0600-1800	LAVA ICP
W/T PVT E-86 TOUGH		7/17	HAMILTON, MARK	1	E-86	0600-1800	LAVA ICP
GRD2 PVT E-270 GREGORY			GREGORY, TOM	1	E-270	0600-1800	LAVA ICP
EMTF KUNTZ		7/12	KUNTZ, DUSTIN	1	O-90	0600-1800	LAVA ICP
EMTF BAKER		7/12	BAKER, MATT	1	O-93	0600-1800	LAVA ICP
REMS E-42 MOUNTAIN MEDICS IN		8/1	DRUMMOND, MATT	4	E-42	0600-1800	LAVA ICP SPIKE
SOFR LUCAS		7/14	LUCAS, MATTHEW	1	O-80	0600-1800	LAVA ICP
SOFR MOTT		7/14	MOTT, TODD C	1	O-44	0600-1800	LAVA ICP SPIKE
SOFR LOFDAHL (t)		7/9	LOFDAHL, KELSEY L	1	O-323	0600-1800	LAVA ICP SPIKE
<div style="display: flex; justify-content: space-between;"> <span style="color: red; font-weight: bold;">TFLD FAB</span> <span style="color: red; font-weight: bold;">7/11</span> <span style="color: red; font-weight: bold;">1</span> <span style="color: red; font-weight: bold;">0-40</span> </div> <div style="display: flex; justify-content: space-between;"> <span style="color: red; font-weight: bold;">CDWZ FIRESTRIKE</span> <span style="color: red; font-weight: bold;">7/20</span> <span style="color: red; font-weight: bold;">20</span> <span style="color: red; font-weight: bold;">C-65</span> </div> <div style="display: flex; justify-content: space-between;"> <span style="color: red; font-weight: bold;">ORWZ LAVA RIVER</span> <span style="color: red; font-weight: bold;">7/19</span> <span style="color: red; font-weight: bold;">20</span> <span style="color: red; font-weight: bold;">C-79</span> </div>							

**6. Work Assignments:**

**TASK:** Continue direct line construction to Bolam Creek. Mop up control line to extent necessary.

**PURPOSE:** To minimize the likelihood of escape from control lines.

**END STATE:** Fire containment.

**7. Special Instructions:**

Back haul all trash and equipment.

**8. Communications**

Name	Ch	Function	Rx Freq	Rx Tone	Tx Freq	Tx Tone	Notes
NIFC C29	4	COMMAND	171.5375	110.9 (T1)	164.8625	110.9 (T1)	
NIFC TAC 3	7	TACTICAL	168.6000	110.9 (T1)	168.6000	110.9 (T1)	
A/G TAC	13	AIR TO GROUND	169.1500	CSQ	169.1500	NONE	
A/G CMD	14	AIR TO GROUND	167.9500	CSQ	167.9500	NONE	
AIR GUARD	16	EMERGENCY	168.6250	CSQ	168.6250	110.9 (T1)	

**9. Prepared by: Name:**    Danny Douglas    RESL    Signature:

**ICS 204**    Date/Time: 7/5/2021    2200    Personnel Count: 23

# ASSIGNMENT LIST (ICS 204 WF)

CONTROLLED UNCLASSIFIED  
INFORMATION/BASIC

<b>1. Incident Name:</b> <b>LAVA FIRE</b>	<b>2. Operational Period:</b> Date From: 07/06/21    Date To: 07/07/21 Time From: 0600    Time To: 0600	<b>3. Branch</b> <b>Division</b>  <b>I    ROADS GROUP</b>
--	---	---

**4. Operations Personnel:**

Operations Section Chief: <b>Chad Cook / Kerri Gilliland(t)</b>	Night Ops: <b>Billy Steers</b>
Branch Director: <b>Travis Thane</b>	Branch Safety:
Division/Group Supervisor: <b>Billy Covert</b>	Air Attack:

Page 1 of 1

5. Resources Assigned:		** Resources Below in Bold are 12 Hour **					
Resource Identifier	ALS	LWD	Leader	Personnel	Request #	Hours	Reporting Location
ENG6 PVT EARTH IND ENG 1		7/13	<b>RUDY VOSS</b>	3	<b>E-66</b>	0600-1800	LAVA ICP
DOZ SHF 29		7/10	<b>CAMARA, CODY</b>	4	<b>E-204</b>	0600-1800	LAVA ICP
DOZ2 PVT E-115 NORTHSTATE		7/13	<b>SILVA, JARED</b>	2	<b>E-115</b>	0600-1800	LAVA ICP
DOZ2 PVT E-118 SPRATT		7/13	<b>SPRATT, ERIC</b>	2	<b>E-118</b>	0600-1800	LAVA ICP
DOZ2 PVT E-119 NORTHSTATE		7/14	<b>KAMIHAN, JESSE</b>	2	<b>E-119</b>	0600-1800	LAVA ICP
W/T LNF 3		7/10	<b>CASE, HENRY</b>	2	<b>E-7</b>	0600-1800	LAVA ICP
W/T SON 3392		7/12	<b>CAMPBELL, JASON</b>	2	<b>E-104</b>	0600-1800	LAVA ICP
W/T MRO 5490		7/12	<b>JOHNSON, SHAWN</b>	2	<b>E-103</b>	0600-1800	LAVA ICP
W/T PVT E-23 WILLMORE		7/10	<b>ANDERSON, MICHELLE</b>	1	<b>E-23</b>	0600-1800	LAVA ICP
W/T PVT E-24 WILLMORE		7/10	<b>STOVER, JASON</b>	1	<b>E-24</b>	0600-1800	LAVA ICP
W/T PVT E-28 ALAN'S		7/10	<b>LOGUE, RICKY</b>	1	<b>E-28</b>	0600-1800	LAVA ICP
W/T PVT E-31 PROPUMP		7/10	<b>SEABOURNE, MIKE</b>	2	<b>E-31</b>	0600-1800	LAVA ICP
W/T PVT E-241 MIKE WATER		7/16	<b>SMITH, LARRY</b>	1	<b>E-241</b>	0600-1800	LAVA ICP
GRD2 PVT E-271 LAMB		7/18	<b>BROWER, JUSTIN</b>	1	<b>E-271</b>	0600-1800	LAVA ICP
MAS PVT E-203		7/12	<b>WRIGHT, TIM</b>	1	<b>E-203</b>	0600-1800	LAVA ICP
<b>HERB PRICE</b>		<b>7/15</b>	<b>PRICE, NICK</b>	<b>1</b>	<b>0-356</b>		
<b>WT WILLMORE AG</b>		<b>7/10</b>	<b>TORRES, BILL</b>	<b>1</b>	<b>E-25</b>		<b>From Herold Site</b>

**6. Work Assignments:**

**TASK:** Repair damage to roads.

**PURPOSE:** To maintain their serviceability as access roads.

**END STATE:** Roads are usable when fire is contained.

**7. Special Instructions:**

Back haul all trash and equipment.

ADD  
EXCA: MURDOCK,    7/20 MURDOCK, MIKE 2 E-208  
EXCA:  
EXCA:

**8. Communications**

Name	Ch	Function	Rx Freq	Rx Tone	Tx Freq	Tx Tone	Notes
NIFC C29	4	COMMAND	171.5375	110.9 (T1)	164.8625	110.9 (T1)	
NIFC TAC 3	7	TACTICAL	168.6000	110.9 (T1)	168.6000	110.9 (T1)	
A/G TAC	13	AIR TO GROUND	169.1500	CSQ	169.1500	NONE	
A/G CMD	14	AIR TO GROUND	167.9500	CSQ	167.9500	NONE	
AIR GUARD	16	EMERGENCY	168.6250	CSQ	168.6250	110.9 (T1)	

**9. Prepared by: Name:**    Danny Douglas    RESL    Signature:

**ICS 204**    Date/Time: 7/5/2021    2200    Personnel Count: 27

# ASSIGNMENT LIST (ICS 204 WF)

CONTROLLED UNCLASSIFIED  
INFORMATION//BASIC

<b>1. Incident Name:</b> <p style="text-align: center;"><b>LAVA FIRE</b></p>	<b>2. Operational Period:</b> Date From: 07/06/21    Date To: 07/07/21 Time From: 0600            Time To: 0600	<b>3. Branch</b> <b>Division</b> <p style="text-align: center;"><b>III</b>                                      <b>N</b></p>
---	---	---

<b>4. Operations Personnel:</b>		Page 1 of 1                      November
Operations Section Chief: <b>Chad Cook / Kerri Gilliland(t)</b>	Night Ops: <b>Billy Steers</b>	
Branch Director: <b>Peter Tolosano / Shane Santos(t)</b>	Branch Safety:	
Division/Group Supervisor: <b>Mike Carter / Jonathan Duncan(t)</b>	Air Attack:	

5. Resources Assigned:	** Resources Below in Bold are 12 Hour **							
Resource Identifier	ALS	LWD	Leader	Personnel	Request #	Hours	Reporting Location	
CRW2IA PVT FIRESTORM 6		7/12	<b>LOPEZ, GENE</b>	20	<b>C-33</b>	<b>0600-1800</b>	<b>LAVA ICP</b>	
CRW2 PVT C-62 PACIFIC COAST		7/17	<b>MIRACLE, JESSE</b>	20	<b>C-62</b>	<b>0600-1800</b>	<b>LAVA ICP</b>	
DOZ2 PVT E-58 NORTHSTATE		7/12	<b>METZ, CARSON</b>	2	<b>E-58</b>	<b>0600-1800</b>	<b>LAVA ICP</b>	
W/T ENF 235		7/13	<b>BOYD, JOSHUA</b>	2	<b>E-87</b>	<b>0600-1800</b>	<b>LAVA ICP</b>	
W/T PVT E-83 LENAHAH		7/13	<b>SPURLOCK, HANK</b>	1	<b>E-83</b>	<b>0600-1800</b>	<b>LAVA ICP</b>	
W/T PVT E-240 DAVID		7/16	<b>PRICE, DAVID</b>	1	<b>E-240</b>	<b>0600-1800</b>	<b>LAVA ICP</b>	
TFLD FABBRI → E		7/11	<b>FABBRI, BRIAN J</b>	1	<b>O-40</b>	<b>0600-1800</b>	<b>LAVA ICP</b>	
HEQB LARGE		7/10	<b>LARGE, TYSON Z</b>	1	<b>O-41</b>	<b>0600-1800</b>	<b>LAVA ICP</b>	
EMTF OBERG		7/12	<b>OBERG, JONATHAN</b>	1	<b>O-88</b>	<b>0600-1800</b>	<b>LAVA ICP</b>	
EMTF JOHNSON		7/12	<b>JOHNSON, JUSTIN</b>	1	<b>O-85</b>	<b>0600-1800</b>	<b>LAVA ICP</b>	
SOFR KIRBY		7/15	<b>KIRBY, ALAN O</b>	1	<b>O-154</b>	<b>0600-1800</b>	<b>LAVA ICP</b>	
SOFR MARTIN (t)		7/15	<b>MARTIN, JASON R</b>	1	<b>O-176</b>	<b>0600-1800</b>	<b>LAVA ICP</b>	
<b>ENGS SHF 321</b>		<b>7/10</b>	<b>TONLEY, BOB</b>	<b>6</b>	<b>E-51</b>		<b>FROM PR</b>	

**6. Work Assignments:**  
**TASK:** Tactical Patrol. Eliminate hazards and mop-up where necessary. Complete suppression repair where appropriate.  
**PURPOSE:** To eliminate threats to the fire line. Repair fire suppression effort damages.  
**END STATE:** Fire containment and recovery.

**7. Special Instructions:**  
 Back haul all trash and equipment.

**8. Communications**

Name	Ch	Function	Rx Freq	Rx Tone	Tx Freq	Tx Tone	Notes
NIFC C9	3	COMMAND	170.0125	110.9 (T1)	168.2500	110.9 (T1)	
NIFC TAC 6	9	TACTICAL	166.7750	110.9 (T1)	166.7750	110.9 (T1)	
A/G TAC	13	AIR TO GROUND	169.1500	CSQ	169.1500	NONE	
A/G CMD	14	AIR TO GROUND	167.9500	CSQ	167.9500	NONE	
AIR GUARD	16	EMERGENCY	168.6250	CSQ	168.6250	110.9 (T1)	

**9. Prepared by: Name:** Danny Douglas                      RESL                      Signature:

**ICS 204**                      Date/Time: 7/5/2021    2200                      Personnel Count: 52







### AIR OPERATIONS SUMMARY ICS-220

<b>Incident Name and Incident Number</b> Lava CA-SHF-0949	<b>Sunrise</b> 541	<b>Startup</b> 613	<b>Cutoff</b> 2016	<b>Sunset</b> 2046	<b>Time Prepared</b> 1630 <b>Shutdown</b> 2116	<b>Date Prepared</b> Monday, July 05, 2021 <b>Operational Period - Date</b> Tuesday, July 06, 2021	<b>Prepared By</b> Jason Nava <b>Operational Period - Time</b> 0700-2100
<b>General Remarks, Safety Notes, Hazards, Air Operations Special Equipment, etc.</b> TRACK ALL DIPSITE LOCATIONS / NUMBER OF DIPS / GALLONS TAKEN. TRACK ALL DROP LOCATIONS / NUMBER OF DROPS / GALLONS DROPPED. ALL GPS DATA TO BE COLLECTED IN DEGREES. MINUTES. DECIMAL MINUTES FORMAT. AVOID Aerial Application of Retardant / Foam / Agent within 300' of Waterways, Bodies of Water, etc. If Retardant / Foam / Agent is Dropped Within These Areas Immediately Notify the AOB and Provide the Following Information: Lat / Long, Estimated Number of Gallons and a Map Detailing The Area. Approved Dipsites only							

Frequencies	RX	Tone	TX	Tone	AM / FM	Position	Name	Phone	Trainee Name	Phone
AIR TACTICS	168.3375		168.3375		FM	AOBD	Jason Nava	661-805-4750		
AIR / AIR Rotary Wing	124.0250		124.0250		AM	ASSG (T)			TYLER DETRICK	530-925-6668
AIR / AIR - Briefing	120.0250		120.0250		AM	HEBM	Lava BLAINE COYLE	209-459-9245	CHRIS BAVETTA	530-339-6687
AIR / GROUND - Command	167.9500		167.9500		FM	HEBM	Siskiyou MIKE STELP	530-308-5711		
AIR / GROUND - Tactical	169.1500		169.1500		FM	ATGS	ERIC HASKINS	909-553-4702	LEONARD DIMACULANGAN	626-941-4578
COMMAND 1	170.9750	110.9 (1)	168.7000	110.9 (1)	FM					
COMMAND 9	170.0125	110.9 (1)	165.2500	110.9 (1)	FM					
COMMAND 29	171.5375	110.9 (1)	164.8625	110.9 (1)	FM					
DECK-LAVA	163.1000		163.1000		AM	HLCO	BILL LAMPERT	530-598-4128	Matt Dickson	559-202-9948
DECK-SISKIYOU	168.3500		168.3500		FM	HLCO	Matt Lynde	530-941-4600		
CALCORD - MEDICAL	156.0750	156.7 (6)	156.0750	156.7 (6)	FM					
FAA Tower	120.2750		120.2750		AM					

#### HELICOPTERS ( Use page 2 if Needed )

FAA #	Type	Make/Model	Helibase	Avail	Start	Remarks / A - #	FAA #	Type	Make/Model	Helibase	Avail	Start	Remarks / A - #
8AC	1	S-64	LAVA	700	800		3CH	1	BV-234	SISKIYOU	700	800	
73U	1	S-61	LAVA	700	800		3AC	1	S-64	SISKIYOU	700	800	
H506	2	205++	LAVA	700	800		2PJ	1	UH-60	SISKIYOU	700	800	
82D	2	UH-1F	LAVA	700	800		3TW	1	UH-60	SISKIYOU	700	800	
H517	2	212HP	LAVA	700	800		25M	1	S-64	SISKIYOU	700	800	
H509	2	BELL 209	LAVA	700	800								
3JR	3	AS-350-B3E	LAVA	700	800		H516	2	212HP	SISKIYOU	700	800	
2JG	3	Bell L3	LAVA	700	800								

#### FIXED WING ( Use Page 2 if Needed )

FAA #	Type	Make/Model	Base	Avail	Start	Remarks	FAA #	Type	Make/Model	Base	Avail	Start	Remarks
AA 52			REDDING	800	900	Primary AA							

Mission	Aircraft	Start Time	Departure Point	Destination	Planned Missions ( Includes: Water Dropping, Retardant, Recon, Rescue, Cargo, Personnel Transport, Air Attack, HLCO, etc.)
WATER DROPPING					AS REQUESTED
RECON					AS REQUESTED
RETARDANT					AS REQUESTED

**Notes:**

WATER TENDERS ASSIGNED TO DIPSITE: E-25, E-26, E-30, E-239 CRASH RESCUE E-32 at Lava Helibase  
 WATER TENDER assigned to Siskiyou Helibase: E-138 CRASH RESCUE E-205 at Siskiyou  
 FIREWATCH ON MAINTENANCE PHASE FOR A FEW DAYS



**Incident:**

Lava CA-SHF-000949

**Date:**

7-6-21 thru 7-7-21

**Operational Period:**

0600-0600



# SAFETY MESSAGE

*Fire fighter safety comes first on every fire, every time*

**Major Hazards and Risks:**

- ❖ **Spike Camp:** Make sure a timely medevac plan is implemented for line spike. Have good communication with line medics. Keep your line spike area clean from food waste to prevent aggressive wildlife.
- ❖ **Dehydration, Heat Stress, and Fatigue** - Constantly monitor your water and electrolyte intake to avoid dehydration. Dehydration and long work hours, coupled with high temperatures all impact fatigue. Maintain the work to rest ratio, 2:1.
- ❖ **Medical Emergencies** – Do you know what to do in case of a medical emergency? Review Medical Plan (ICS 206) and become familiar with the “Line Emergencies” procedures checklist. Your actions may be what saves a life.
- ❖ **Environmental Hazards:** Be watchful for Bears, Rattlesnakes, Bees and other insects that bite or sting. Don't leave food out, haul out trash daily. Look before you step or place hands on the ground. Identify who on your crew is allergic to bees and ensure medication is available.

## Hygiene

It's important to maintain good hygiene while assigned to incidents.

- Wash hands with soap and water or use hand sanitizer after using the restroom and before eating or handling food.
- Shower often or when you have the opportunity.
- Avoid touching your mouth, eyes and nose with dirty hands.

**Good hygiene will help keep illnesses out of camp**

## SUPPRESSION REPAIR

- Stay alert while working around heavy equipment.
- Communicate clearly with operators of heavy equipment.
- Maintain safe working distances.
- Avoid working below dozers and watch out for rolling materials. Maintain accountability of personnel.

*Team Safety Officers: Doug McKelvey, John Nickey*

## INCIDENT SAFETY ANALYSIS 215a

Lava Fire		July 6-7, 2021 0600-0600
8. Task	9. Hazard	13. Identify hazard mitigations & controls (press [alt + enter] to add a line)
Bucket Work	Aircraft Mishap - General	<ul style="list-style-type: none"> <li>~ Ensure positive communication with all air resources</li> <li>~ Don't plan on air resources for medical transport or resupply</li> <li>~ Follow "Aviation Watch-Out Situations" IRPG Pg 46</li> <li>~ Refer to "Directing Bucket or Retardant Drops IRPG Pg 58</li> <li>~ Refer to "Aerial Retardant Safety" IRPG Pg 57</li> <li>~ Refer to "Aircraft Mishap Response Procedure" IRPG Pg 62</li> </ul>
Direct Line Construction - Hand tools/Saws	Lava Beds	<ul style="list-style-type: none"> <li>~ Slow down and be sure of your footing.</li> <li>~ Wear gloves at all times</li> <li>~ Flag verticle tubes and pass on info.</li> <li>~ Be mindful of tire damage when driving through lava beds.</li> </ul>
Transportation - Ground/Roads Maintenance	Equipment - Crushed by Heavy Equipment/Rollover	<ul style="list-style-type: none"> <li>• When working around a dozer or tractor plow, stay at least 100 feet in front or 50 feet behind the equipment.</li> <li>• Allow no one but the operator to ride on the equipment.</li> <li>• Operators will wear required personal protective equipment (PPE) and carry a fire shelter.</li> <li>• Refer to Pg 86 of IRPG.</li> </ul>
Line Construction All	MVA - Surface	<ul style="list-style-type: none"> <li>~ Use Road Graders with Water Tenders for repair.</li> <li>~ Alternative route to limit over use.</li> <li>~ Scout and communicate on road conditions prior to driving on over used forest roads.</li> <li>~ Drive slow in poor road conditions.</li> <li>~ When getting pulled out stay clear of cables and chains. Have a plan before getting pulled out.</li> </ul>
Spike Camp	Medical - Patient Evacuation Delay	<ul style="list-style-type: none"> <li>~ Assure line Medics or EMT's are assigned to spike camps</li> <li>~ Select air evac sites at or near spikes</li> <li>~ Maintain crew supplies for mimumn of two days</li> </ul>
Suppression Repair - Mechanical	Equipment - Crushed by Heavy Equipment/Rollover	<ul style="list-style-type: none"> <li>• Ensure communications are established with operators</li> <li>• Make positive contact with operator before approaching.</li> <li>• Use hand signals if other communications are unavailable</li> <li>• Maintain a 50'-100' exclusion area around equipment</li> <li>• Use a spotter when backing qualified operators and appropriate overhead.</li> <li>• Close roads or trails if necessary for public safety.</li> <li>• PPE including hearing protection.</li> <li>• Maintain safe working distance from equipment</li> </ul>
Line Construction All	Medical - Heat Related Illness	<ul style="list-style-type: none"> <li>~ Drink Fluids throughout operational period (6-8 quarts/shift).</li> <li>~ Maintain water/electrolyte ratio of 3 to 1.</li> <li>~ Carry extra water on line and cache water at drop points.</li> <li>~ Take frequent breaks, minimum of 10 minutes every hour.</li> <li>~ Allow out of area resources to acclimate before expecting peak performance.</li> <li>~ Recognize symptoms of HEAT RELATED INJURY.</li> </ul>
Direct Line Construction - Hand tools/Saws	Hit by Rolling Material in Steep Terrain	<ul style="list-style-type: none"> <li>~ Have a lookout inplace for rolling material</li> <li>~ Place crewmembers in a staggered pateren to avoid moving debris on fire personnel</li> </ul>
Line Construction All	Entrapment - Rapid Change in Fire Behavior	<ul style="list-style-type: none"> <li>• Utilized full PPE in fire area at all times</li> <li>• Implement LCES plan that accounts fro extreme conditions.</li> <li>• Disengage at first sight of trouble and reassess.</li> <li>• Monitor Wx hourly and communicate findings to all.</li> <li>• Identify or construct safety zones adaquate for personnel assigned to the area.</li> </ul>

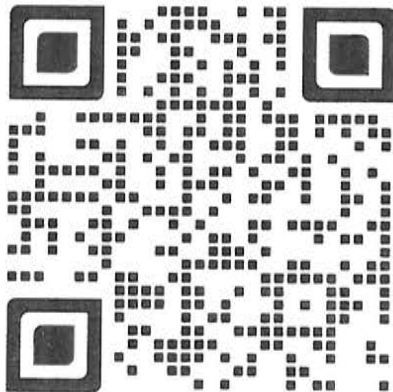
Spike Camp	Hostile Wildlife	<ul style="list-style-type: none"> <li>~ Watch out for wildlife &amp; livestock inside fire area and along roadways.</li> <li>~ Clean up all debris and trash during each operational period</li> </ul>
Line Construction All	Hit by Tree/Snag/Branch	<ul style="list-style-type: none"> <li>~ Follow "Hazard Tree Safety" guidelines, IRPG page 22-23.</li> <li>~ Post lookouts or use a spotter in mop-up areas that have hazard trees.</li> <li>~ Don't park vehicles or take breaks in high concentrations of hazard trees.</li> <li>~ Establish trigger points for disengagement during high wind events.</li> <li>~ Maintain a hazard zone of a minimum of 2 1/2 tree heights.</li> <li>~ Perform a risk assessment before entering area and ask why and is the gain worth the risk.</li> </ul>
Patrol/Secure Fires Edge/Mop-up	Marijuana Grows/Criminally Active Area	<ul style="list-style-type: none"> <li>• Do not enter areas unless there is a law enforcement presence.</li> <li>• Be aware of the presence of toxic chemicals.</li> <li>• Local criminal elements and organized crime can be involved in the organization.</li> <li>• Anti-Personnel Devices (APD) may be present.</li> </ul>
Line Construction All	Railway Activity	<ul style="list-style-type: none"> <li>• Post a lookout when working on or near tracks</li> <li>• Only spend as much time on or crossing tracks as absolutely necessary.</li> <li>• Look up and down tracks at crossings.</li> </ul>
Line Construction All	Power Utilities	<ul style="list-style-type: none"> <li>~ Refer to the IRPG pages 24-25 for Power Line Safety.</li> <li>~ Notify all personnel of down electrical lines.</li> <li>~ Always treat downed wires as energized, even old telegraph lines.</li> <li>~ Identify and avoid high tension transmission lines.</li> </ul>

INCIDENT RADIO COMMUNICATIONS PLAN (ICS 205)		Incident Name		Date/Time Prepared		Operational Period Date/Time					
LAVA		LAVA		7/05/2021 1800		7/06/2021 0600 - 7/07/2021 0600					
Utilization of any frequency other than those listed on this form are prohibited, subject to fines by the FCC and demobilization from the incident.											
Zh Ch	Function	Channel Name/Trunked Radio System Talkgroup	Assignment	RX Freq N or W	RX Tone/NAC	TX Freq N or W	TX Tone/NAC	Dev	Pwr	Mode A, D or M	Remarks
1	COMMAND	SHFR	SHASTA FOREST	171.5750	CSQ	165.0125	Tone 15 162.2	N	H	A	BACK-UP, I/A ONLY
2	COMMAND	NIFC C1	ALL DIVS	170.9750	CSQ	168.7000	Tone 1 110.9	N	H	A	WEED
3	COMMAND	NIFC C9	ALL DIVS	170.0125	Tone 1 110.9	165.2500	Tone 1 110.9	N	H	A	ANTELOPE
4	COMMAND	NIFC C29	ALL DIVS	171.5375	Tone 1 110.9	164.8625	Tone 1 110.9	N	H	A	HERD PEAK
5	TACTICAL	NIFC TAC 2	I/A ONLY	168.2000	CSQ	168.2000	NONE	N	H	A	I/A ONLY
6	TACTICAL	NIFC TAC 1	DIV A	168.0500	Tone 1 110.9	168.0500	Tone 1 110.9	N	L	A	BRANCH I
7	TACTICAL	NIFC TAC 3	DIV E / ROADS GRP	168.6000	Tone 1 110.9	168.6000	Tone 1 110.9	N	L	A	BRANCH I
8	TACTICAL	NIFC TAC 5	DIV P/R DAY	166.7250	Tone 1 110.9	166.7250	Tone 1 110.9	N	L	A	BRANCH III
9	TACTICAL	NIFC TAC 6	DIV N	166.7750	Tone 1 110.9	166.7750	Tone 1 110.9	N	L	A	BRANCH III
10	TACTICAL	NIFC TAC 7	NIGHT GROUP	168.2500	Tone 1 110.9	168.2500	Tone 1 110.9	N	L	A	BRANCH III
11	TACTICAL	CDF TAC 24	BRANCH V	151.3325	Tone 16 192.8	151.3325	Tone 16 192.8	N	L	A	BRANCH V
12	TACTICAL	CDF TAC 25	AVAILABLE	159.2775	Tone 16 192.8	159.2775	Tone 16 192.8	N	L	A	BRANCH III
13	Air-to-Ground	A/G TAC	ALL DIVS	169.1500	CSQ	169.1500	NONE	N	L	A	
14	Air-to-Ground	A/G CMD	ALL DIVS	167.9500	CSQ	167.9500	NONE	N	H	A	INCIDENT WIDE
15	TACTICAL	CALCORD	ALL DIVS	156.0750	Tone 6 156.7	156.0750	Tone 6 156.7	N	L	A	MEDICAL
16	EMERGENCY	AIR GUARD	EMERGENCY	168.6250	CSQ	168.6250	Tone 1 110.9	N	L	A	EMERGENCY ONLY
Prepared By (Communications Unit Leader) <i>Scott La Rue and Jeff Carter</i>				Incident Location: WEED				Forest / Unit / Jurisdiction: SHASTA NF			
County: SISKIYOU State: CA				Latitude: " N Longitude: W							
<b>Scott La Rue and Jeff Carter, COML (279) 203-4498 2417 Number</b> The convention calls for frequency lists to show four digits after the decimal place (five digits for 700 MHz frequencies). The letter "U", "N", or "W" in the deviation (Dev) column reflects whether the frequency is ultranarrow (6.25 kHz), narrow (12.5 kHz) or wide band (25 kHz). Mode refers to either "A" indicating Analog, "D" indicating Digital (e.g. Project 25) or "M" indicating Mixed Mode. All channels are shown as if programmed in a control station, mobile or portable radio. Repeaters (and depending on use, base stations) must be programmed with the Rx and Tx reversed.											

## LAVA DMOB PROCESS

The Lava Fire DMOB list will be available in the evenings using the QR Code found on the cover of the IAP– DMOB List

- I. ALL Federal Agency, Local Government and OES resources
  - A. Report to ICP at College of the Siskiyous for DMOB to Include
    1. Communications Unit
    2. Supply Unit
      - a) Provide a detailed completed ICS 213 signed by appropriate Division/Group Supervisor for equipment replacement.
      - b) All ICS 213 requests for S#'s need to be approved through Fed Finance for approval
    3. Ground Support ( 1 ½ Miles North of the 5 Fwy on the Hwy 97 at the Old Mill)
    4. Finance (OES Rep for Local Government and OES)
    5. DMOB Unit
- II. Cal Fire Resources (10000 #'s)
  - A. Report to ground support 1<sup>st</sup> at Siskiyou County Roads Department (279 Sharps Road, Yreka) for mechanical inspection
  - B. When complete with ground report Cal Fire Finance (Building 8) at the College of the Siskiyous.
  - C. When complete with Finance report to incident DMOB to complete the DMOB Process.



07/06/2021

TENTATIVE RELEASE

LAVA US-CA-SHF-000949

**CREWS**

C-14            0730                            (HC2I)            FIRESTORM 15B

**EQUIPMENT**

E-10008	0700	(ES3)	HUU 9120C
E-10035	0700	(ES3)	SHU 9240C
E-212	0730	(ENG3)	LAKE SHASTINA - 3112*****
E-214	0730	(ENG4)	ENGINE - T4 - WEED CITY -
E-10018	0745	(WTS1)	JOHN SEMPLE DBA.
E-10038	0745	(ES3)	TGU 9250C
E-26	0800	(WTS2)	DIETZ EQUIPMENT
E-27	0800	(WTS3)	PJ AND R
E-30	0830	(WTS2)	DIETZ EQUIPMENT
E-79	0830	(ENG3)	BAILEY ENTERPRISE
E-10042	0830	(DOZ2)	DARRAH LOGGING
E-10043	0830	(DOZ2)	DARRAH LOGGING
E-102	0900	(WTT1)	OES 31*****
E-106	0900	(WTT1)	PIO WT 38
E-10044	0915	(DOZ1)	DARRAH LOGGING
E-10045	0915	(DOZ2)	SW MAINTENANCE CORP
E-116	0930	(DOZ2)	BARRY BROWN
E-10030	1000	(ENG3)	MT SHASTA FIRE 4615*****
E-10057	1000	(WTS1)	SW MAINTENANCE
E-10059	1000	(WTT2)	ROLL'N ROCK
E-10052	1030	(ES6)	OES 2861F*****
E-10060	1045	(WTS2)	HARRIS EMERGENCY
E-10061	1045	(WTS2)	HARRIS EMERGENCY

07/06/2021

TENTATIVE RELEASE

LAVA US-CA-SHF-000949

E-10062	1130	(WTS2)	HARRIS EMERGENCY
E-10063	1130	(WTS2)	HARRIS EMERGENCY
E-10083	1215	(FEL1)	FELLER BUNCHER ¿
E-10084	1215	(FEL1)	FELLER BUNCHER ¿

OVERHEAD

O-10013	0700	(HEQB)	BONFANTE, DAN
O-10012	0715	(HEQB)	COLLAMER, SARAH A
O-10018	0730	(GMEC)	MEADOWS, CAMERON
O-10008	0745	(DIVS)	TURMAN, LARRY
O-135	0900	(SOF2)	COWIE, CRAIG G

\*\*\*\*\* Designates OES Resource

Lava Fire  
Human Resource Message  
July 6, 2021

*The Forest Service strives for a harassment-free work environment where people treat one another with respect.*

Managers, supervisors, and all employees, as well as our contractors and cooperators have the primary responsibility for creating and sustaining this harassment-free environment. All employees and contractor personnel must take personal responsibility for maintaining conduct that is professional and supportive of this environment.

**WHAT HARASSMENT IS:** Harassment is coercive or repeated, unsolicited and unwelcome verbal comments, gestures or physical contacts and includes retaliation for confronting or reporting harassment. Examples of harassment include, but are not limited to, the following:

**Physical conduct:** Unwelcome touching, standing too close, inappropriate or threatening staring or glaring, obscene, threatening, or offensive gestures.

**Verbal or written conduct:** Inappropriate references to body parts, derogatory or demeaning comments, jokes, or personal questions; sexual innuendoes; offensive remarks about race, gender, religion, age, ethnicity, sexual orientation, political beliefs, marital status, or disability; obscene letters or telephone calls; catcalls; whistles; sexually suggestive sounds; loud, aggressive, inappropriate comments or other verbal abuse.

**Visual, Graphic or Pictorial Displays:** Display of nude pictures, scantily clad, or offensively clad people; display of intimidating or offensive religious, political, or other symbols; display of offensive, threatening, demeaning, or derogatory drawings, cartoons, or other graphics; offensive T-shirts, coffee mugs, bumper stickers in locations covered above or other articles.

Individuals who believe they are being harassed or retaliated against should exercise any one or more of the following options as soon as possible:

- Tell the harasser to stop the offensive conduct; and/or
- Tell a manager or supervisor about the conduct; and/or
- Contact your Contracting Officer or any other individual you trust who would take action.
- In addition, you may seek help from the Human Resource Specialist on the incident.
- You may also report directly to the Harassment Reporting Hotline: 844-815-8943

*"We are what we repeatedly do. Excellence, then, is not an act, but a habit."* -Aristotle-

Janine Summy, Human Resource Specialist, 509-429-1206



# ***Training Specialist - Lava Fire***

**The Training Specialist is working remotely. Training Specialist Contact Information:**

- Bob Rivelle
- Call/Text: 707.498.1761 (Available daily between 0600 and 2200)
- Email: robert\_rivelle@nps.gov

**How to register as a Trainee:**

1. Use the QR code below. If you're unable to register using the QR code, please call me anytime at 707.498.1761.
2. Once registered, you will receive text and email updates.

**How to close-out your training assignment:**

1. **Trainer:** Complete and Evaluation Record in the back of the Position Task Book and make as many entries as possible within the individual tasks. Discuss this with your Trainee.
2. **Trainer:** Complete an individual performance rating (ICS 225) and go over the performance rating with your Trainee.
3. **Trainee:** Text or email a photo of your individual performance rating (ICS 225) to the Training Specialist.
4. **Trainee:** Complete the exit questions at the QR code below.
5. **Trainee:** Once 1-4 are completed, the Trainee and the Training Specialist will have a brief conversation to discuss the Task Book and assignment.
6. **Done**, except for safe travels home!

**Trainee Registration QR Code**



**Trainee Exit Questions**



# WATER SOURCE USE LOG

DATE: \_\_\_\_\_ INCIDENT: Lava Fire

DIVISION/GROUP: \_\_\_\_\_

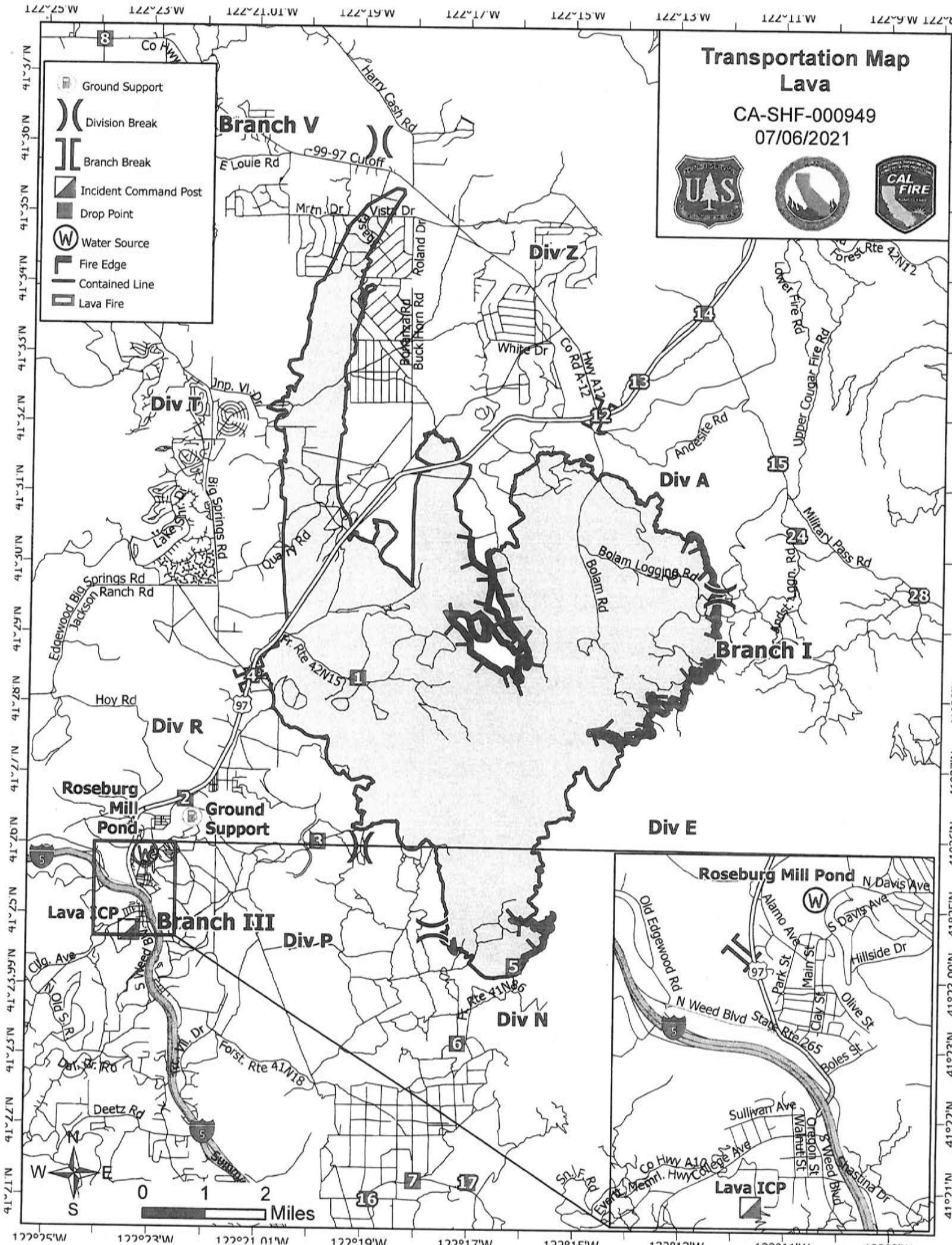
WATER TENDER VENDER OR AGENCY ID: \_\_\_\_\_

RESOURCE ORDER REQUEST #:

WATER SOURCE LOCATION	HYDRANT	OPEN SOURCE (i.e. pond, creek)	TANK	GALLONS USED	PROPERTY OWNER/CONTACT INFORMATION

## TURN INTO FINANCE EQUIPMENT TIME DAILY

Please note if you made contact with property owner and get their contact information. This document is intended to track, record, and validate the amount of water used on an incident. It is not intended to review the performance of equipment using water on an incident.

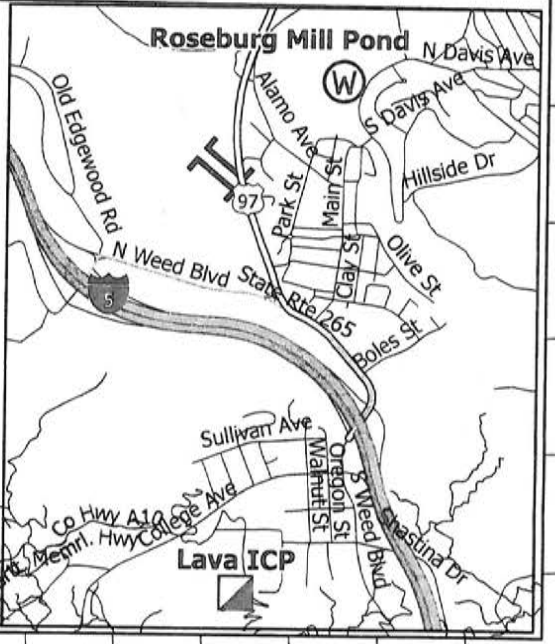
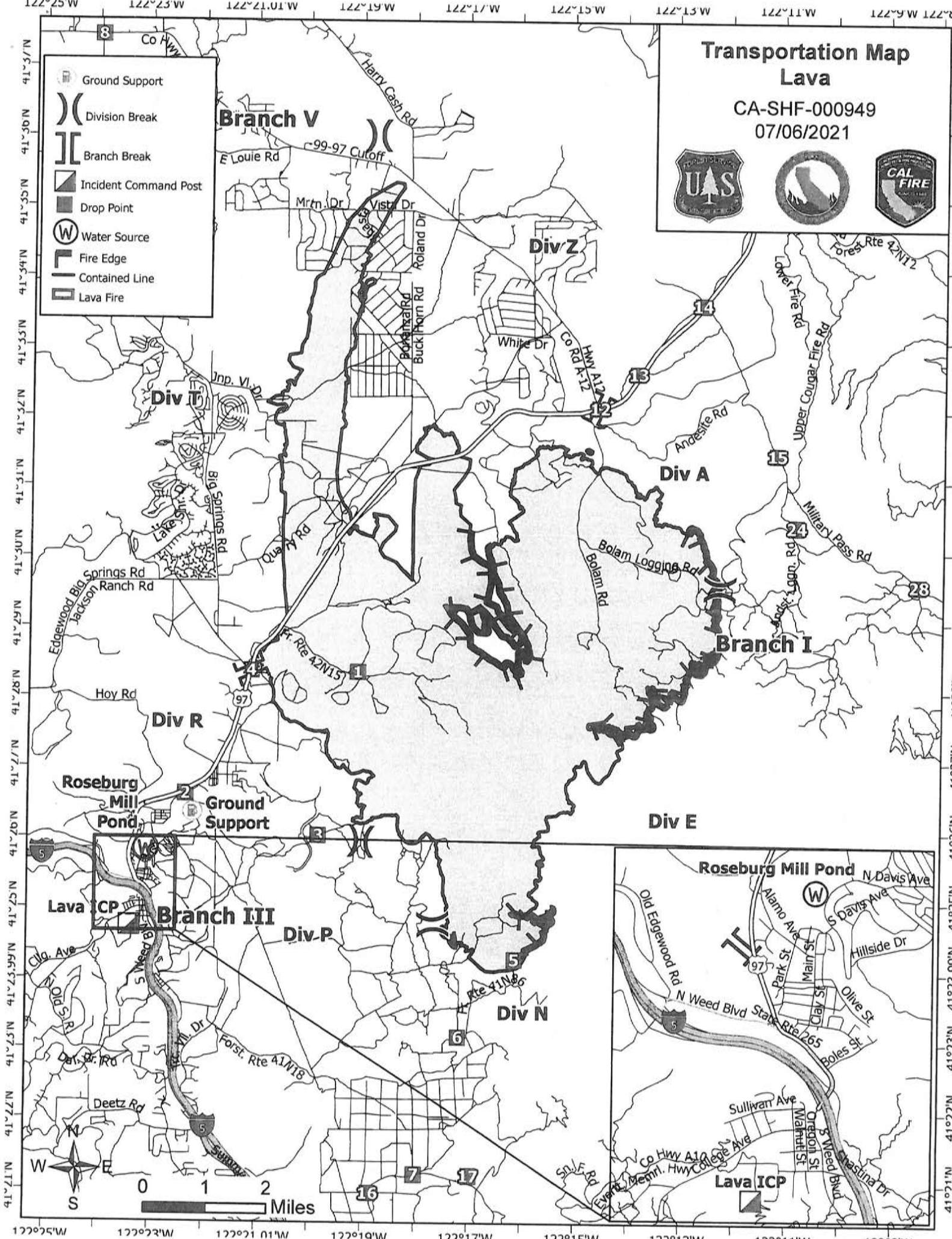


# Transportation Map Lava

CA-SHF-000949  
07/06/2021



- Ground Support
- Division Break
- Branch Break
- Incident Command Post
- Drop Point
- Water Source
- Fire Edge
- Contained Line
- Lava Fire



# College of Siskiyou Campus

Lava  
CA-SHF-000949  
7/4/2021

COLLEGE AVE.

Main Entrance

Bldg 3

College of the Siskiyou

Bldg 7

Bldg 8

Briefing

Supply

Medical

Laundry  
Showers

Lunch/Water

Sleeping Area

TTC Bldg

Kitchen

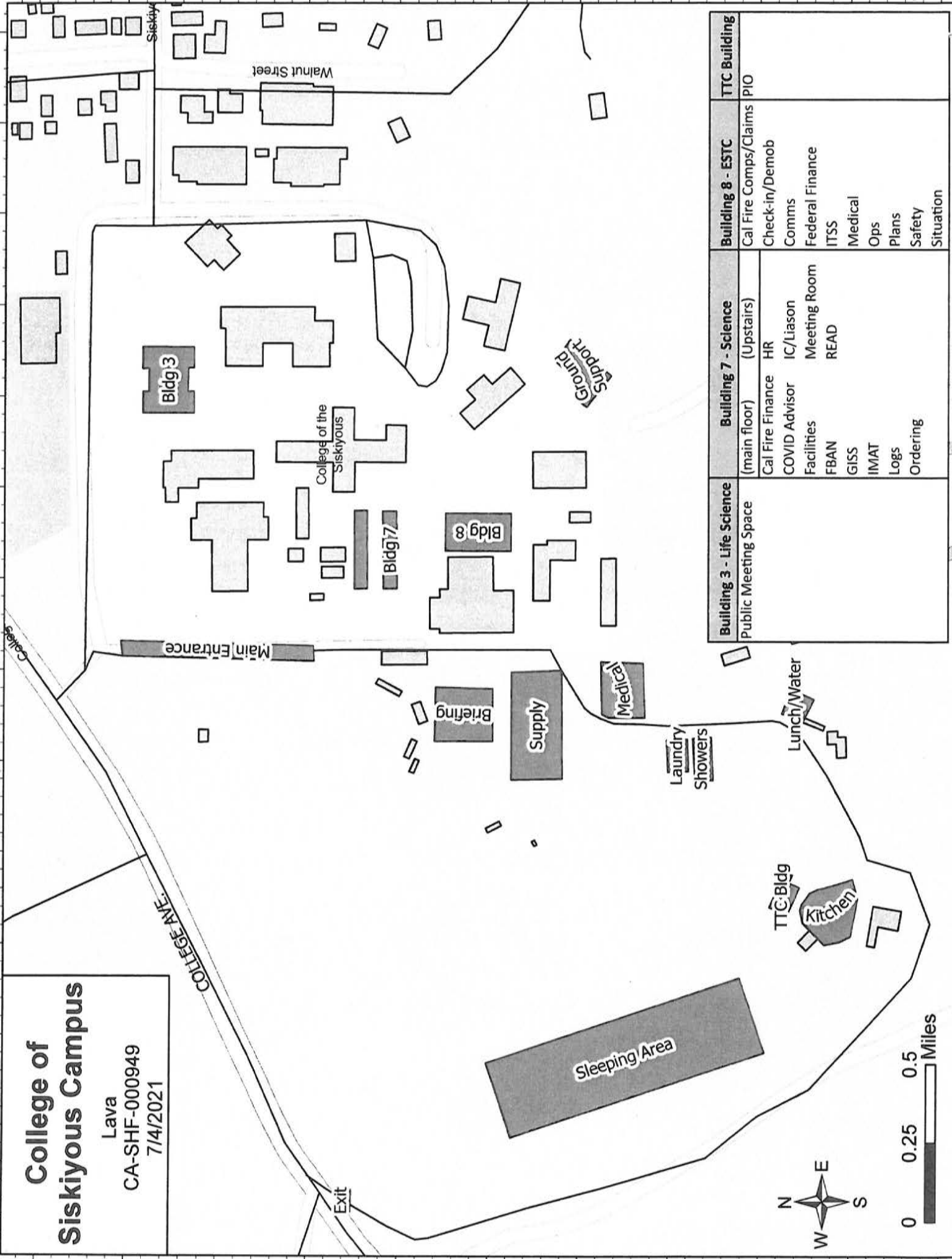
Ground Support

Walnut Street

Siskiyou

Exit

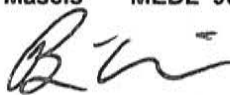
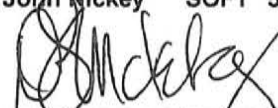
Building 3 - Life Science	Building 7 - Science	Building 8 - ESTC	TTC Building
Public Meeting Space	(main floor) Cal Fire Finance COVID Advisor Facilities FBAN GISS IMAT Logs Ordering	Cal Fire Comps/Claims Check-in/Demob Comms Federal Finance ITSS Medical Ops Plans Safety Situation	PIO
	(Upstairs) HR IC/Liasion Meeting Room READ		







# MEDICAL PLAN (ICS 206 WF) CIIMT 1

<b>1. Incident Name</b>				<b>2. Operational Period</b>							
<b>Lava Fire</b>				Date/Time: <b>07/06/2021</b>		<b>24 Hours</b>		<b>0600-0600</b>			
<b>3. EMS / Ambulance Services</b>											
Name		Location			Contact Method			Advanced Life Support (ALS) Yes      No			
Mountain Medics		ICP			Walk Up 530-605-5205			XX			
Medic 3		DP 12 – Day / ICP Night			Contact on Command			XX			
Medic 5		DP 17 – Day Only			Contact on Command			XX			
REMS 1 (12 Hour Day Only)		Reference 204 for REMS Location			Contact on Command			XX			
Mt. Shasta Ambulance		1020 Oak St. Mt. Shasta, CA 96067			530-842-7066			XX			
<b>4. Air Rescue / Air Ambulance Services</b>											
Name		Contact			Type of Aircraft & Capability						
Helicopter 3JR		Lava Helibase			Type 3, BLS, Short Haul ( Day Only )						
CHP H14 / H16		Redding 530-226-2400			Type 3, ALS, Hoist ( Day Only )						
PHI Air Medical		Redding 530-226-2400			Type 3 Air Ambulance, ALS						
Reach 5		Redding 530-226-2400			Type 3 Air Ambulance, ALS						
<b>5. Hospitals (all times estimated from incident location)</b>											
Name & Level		GPS Datum – WGS 84 Degrees Decimal Minutes		Travel Time Air Ground		Phone		Helipad Yes No		Address	
Mercy Mt. Shasta Medical Center		Lat:	N 41° 19.117'		5 Mins	20 Min s	ER 530-926-9360	XX		914 Pine St. Mt. Shasta, CA	
		Long:	W 122° 19.203'								
Fairchild Medical Center		Lat:	N 41° 43.164'		10 Mins	30 Min s	ER 530-841-6292	XX		444 Bruce St. Yreka, CA	
		Long:	W 122° 38.741'								
Mercy Medical Center Level 2 Trauma STEMI / Stroke		Lat:	N 40°34.33		20 Mins	1.25 Hrs	ER 530-225-7201	XX		2175 Rosaline Ave. Redding, CA	
		Long:	W 122°23.80								
Shasta Regional Medical Center		Lat:	N 40°35.160		20 Mins	1.25 Hrs	ER 530-244-5353	XX		1100 Butte St. Redding, CA	
		Long:	W 122°23.262								
UC Davis Medical Center Level I Trauma / Burn		Lat:	N 38°33.293		1.75 Hrs	3.5 Hrs	ER 916-734-3790 Burn 916-734-3636	XX		2315 Stockton Blvd. Sacramento, CA	
		Long:	W 121°27.317								
<b>6. Division / Crew Emergency Pre-Plan</b>				<b>Update and discuss with assigned resources daily.</b>							
Fireline EMT / Medic's Division / Branch Location											
Air Hoist site location site: Lat: / Long: / Elevation:											
Helispot: Lat: / Long: / Elevation:											
<b>7. Prepared By (Medical Unit Leader)</b>				<b>8. Date/Time</b>		<b>9. Reviewed By (Safety Officer)</b>			<b>10. Date/Time</b>		
Brian Wisler    MEDL 209-620-0660 Rodd Mascis    MEDL 909-630-3969  				07/05/2021 1900		Doug McKelvey SOF1 510-453-3817 John Nickey    SOF1 530-310-3537  			07/05/2021 1900		

# MEDICAL PLAN (ICS 206 WF) CIIMT 1

Medical Incident Report																													
<p><b>FOR A NON-EMERGENCY INCIDENT, WORK THROUGH CHAIN OF COMMAND TO REPORT AND TRANSPORT INJURED PERSONNEL AS NECESSARY.</b></p> <p><b>FOR A MEDICAL EMERGENCY: IDENTIFY ON SCENE INCIDENT COMMANDER BY NAME AND POSITION AND ANNOUNCE "MEDICAL EMERGENCY" TO INITIATE RESPONSE FROM IMT COMMUNICATIONS/DISPATCH.</b></p>																													
<p><b>Use the following items to communicate situation to communications/dispatch.</b></p>																													
<p><b>1. CONTACT COMMUNICATIONS / DISPATCH</b> (Verify correct frequency prior to starting report)  <i>Ex: "Communications, Div. Alpha. Stand-by for Emergency Traffic."</i></p> <p><b>2. INCIDENT STATUS:</b> Provide incident summary (including number of patients) and command structure.  <i>Ex: "Communications, I have a Red priority patient, unconscious, struck by a falling tree. Requesting air ambulance to Forest Road 1 at (Lat./Long.) This will be the Trout Meadow Medical, IC is TFLD Jones. EMT Smith is providing medical care."</i></p>																													
Severity of Emergency / Transport Priority	<input type="checkbox"/> <b>RED / PRIORITY 1</b> Life or limb threatening injury or illness. Evacuation need is <b>IMMEDIATE</b> <i>Ex: Unconscious, difficulty breathing, bleeding severely, 2° – 3° burns more than 4 palm sizes, heat stroke, disoriented.</i> <input type="checkbox"/> <b>YELLOW / PRIORITY 2</b> Serious Injury or illness. Evacuation may be <b>DELAYED if necessary.</b> <i>Ex: Significant trauma, unable to walk, 2° – 3° burns not more than 1-3 palm sizes.</i> <input type="checkbox"/> <b>GREEN / PRIORITY 3</b> Minor Injury or illness. <b>Non-Emergency transport</b> <i>Ex: Sprains, strains, minor heat-related illness.</i>																												
Nature of Injury or Illness & Mechanism of Injury	Brief Summary of Injury or Illness <i>(Ex: Unconscious, Struck by Falling Tree)</i>																												
Transport Request	Air Ambulance / Short Haul/Hoist Ground Ambulance / Other																												
Patient Location	Descriptive Location & Lat. / Long. <i>(WGS84)</i>																												
Incident Name	Geographic Name + "Medical" <i>(Ex: Trout Meadow Medical)</i>																												
On-Scene Incident Commander	Name of on-scene IC of Incident within an Incident <i>(Ex: TFLD Jones)</i>																												
Patient Care	Name of Care Provider <i>(Ex: EMT Smith)</i>																												
<p><b>3. INITIAL PATIENT ASSESSMENT:</b> Complete this section for each patient as applicable (start with the most severe patient)</p> <p>Patient Assessment: See IRPG PAGE 106</p>																													
Treatment:																													
<p><b>4. TRANSPORT PLAN:</b></p> <p>Evacuation Location (if different): <i>(Descriptive Location (drop point, intersection, etc.) or Lat. / Long.)</i> Patient's ETA to Evacuation Location:</p> <p>Helispot / Extraction Site Size and Hazards:</p>																													
<p><b>5. ADDITIONAL RESOURCES / EQUIPMENT NEEDS:</b></p> <p><i>Example: Paramedic/EMT, Crews, Immobilization Devices, AED, Oxygen, Trauma Bag, IV/Fluid(s), Splints, Rope rescue, Wheeled litter, HAZMAT, Extrication</i></p>																													
<p><b>6. COMMUNICATIONS: Identify State Air/Ground EMS Frequencies and Hospital Contacts as applicable</b></p> <table border="1" style="width: 100%; border-collapse: collapse;"> <thead> <tr> <th style="width: 15%;">Function</th> <th style="width: 25%;">Channel Name/Number</th> <th style="width: 15%;">Receive (RX)</th> <th style="width: 15%;">Tone/NAC *</th> <th style="width: 15%;">Transmit (TX)</th> <th style="width: 15%;">Tone/NAC *</th> </tr> </thead> <tbody> <tr> <td>COMMAND</td> <td></td> <td></td> <td></td> <td></td> <td></td> </tr> <tr> <td>AIR-TO-GRND</td> <td></td> <td></td> <td></td> <td></td> <td></td> </tr> <tr> <td>TACTICAL</td> <td></td> <td></td> <td></td> <td></td> <td></td> </tr> </tbody> </table>						Function	Channel Name/Number	Receive (RX)	Tone/NAC *	Transmit (TX)	Tone/NAC *	COMMAND						AIR-TO-GRND						TACTICAL					
Function	Channel Name/Number	Receive (RX)	Tone/NAC *	Transmit (TX)	Tone/NAC *																								
COMMAND																													
AIR-TO-GRND																													
TACTICAL																													
<p><b>7. CONTINGENCY: Considerations:</b> If primary options fail, what actions can be implemented in conjunction with primary evacuation method? Be thinking ahead.</p>																													
<p><b>8. ADDITIONAL INFORMATION:</b> Updates/Changes, et c.</p> <p><b>REMEMBER:</b> Confirm ETA's of resources ordered. Act according to your level of training. Be Alert. Keep Calm. Think Clearly. Act Decisively.</p>																													