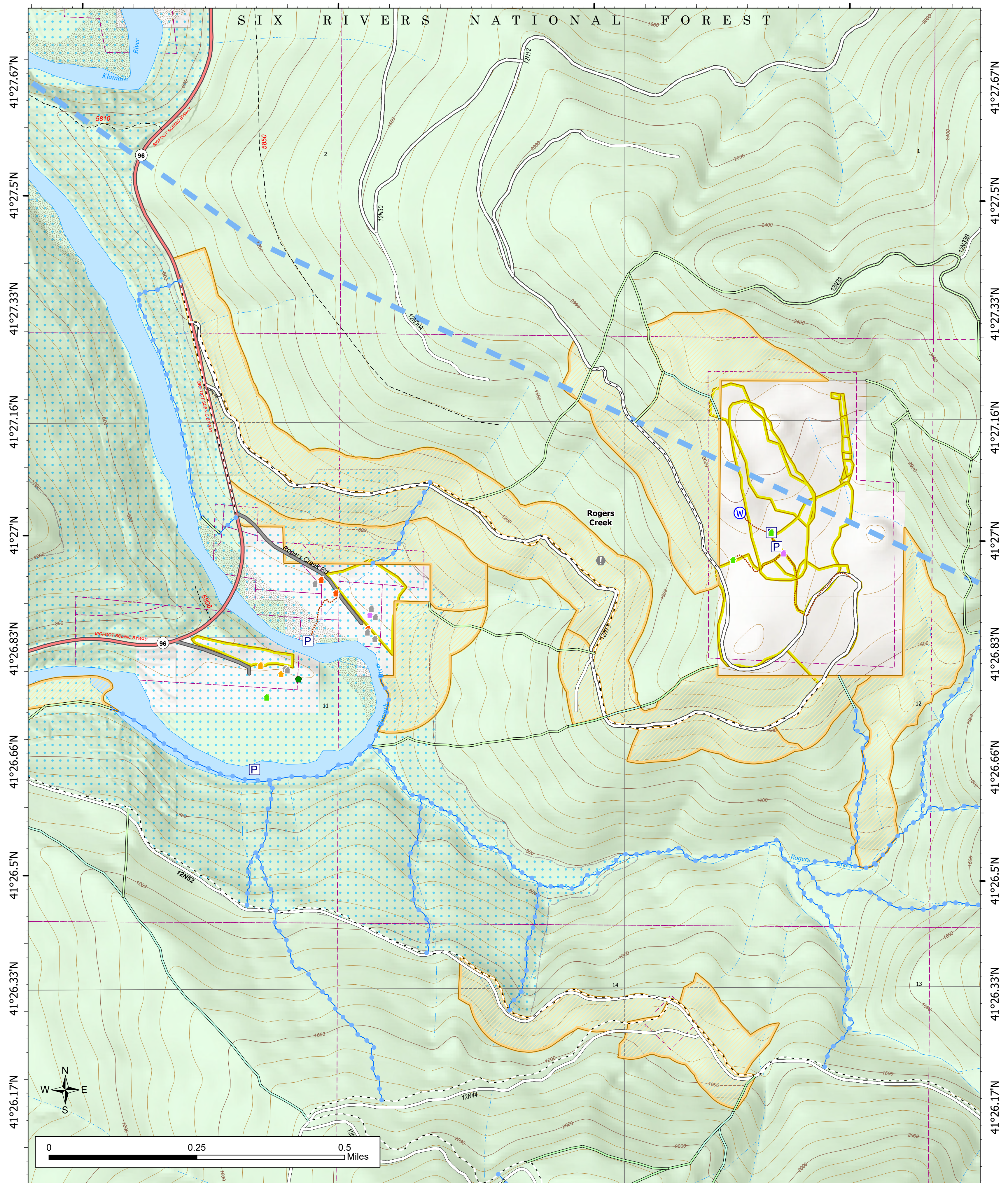


SIX RIVERS NATIONAL FOREST



Structures Group
Rodgers Creek and
Lower Rodgers Creek
 McCash
 CA-SRF-000651
 08/23/2021 Day
 18,143 acres at 08/21/2021 18:54

- Structure Triage**
 IRPG pg 14+15
- Defensible - Stand Alone
 - Defensible - Prep and Hold
 - Non-Defensible - Prep and Leave
 - Non-Defensible - Rescue Drive-By
 - Unknown

- Event Group - All Layers**
- Value at Risk
 - Repair Point
 - ⊙ Water Source
 - P Pump
 - Completed w. Piles
 - Proposed Fuel Break
 - Proposed Fuel Break in Managed Stand

- Proposed Fuel Break on LIDAR Road
- Proposed Handline
- Proposed Handline in Managed Stand
- Riparian Control Feature
- - Roadside Fuel Break
- - - Route
- Temporary Flight Restriction
- - - Trail

- Secondary Highway
- Paved Roads
- Dirt (Not Paved)
- ForestServiceRoads
- Dirt Roads
- Unimproved Roads
- Closed Roads

