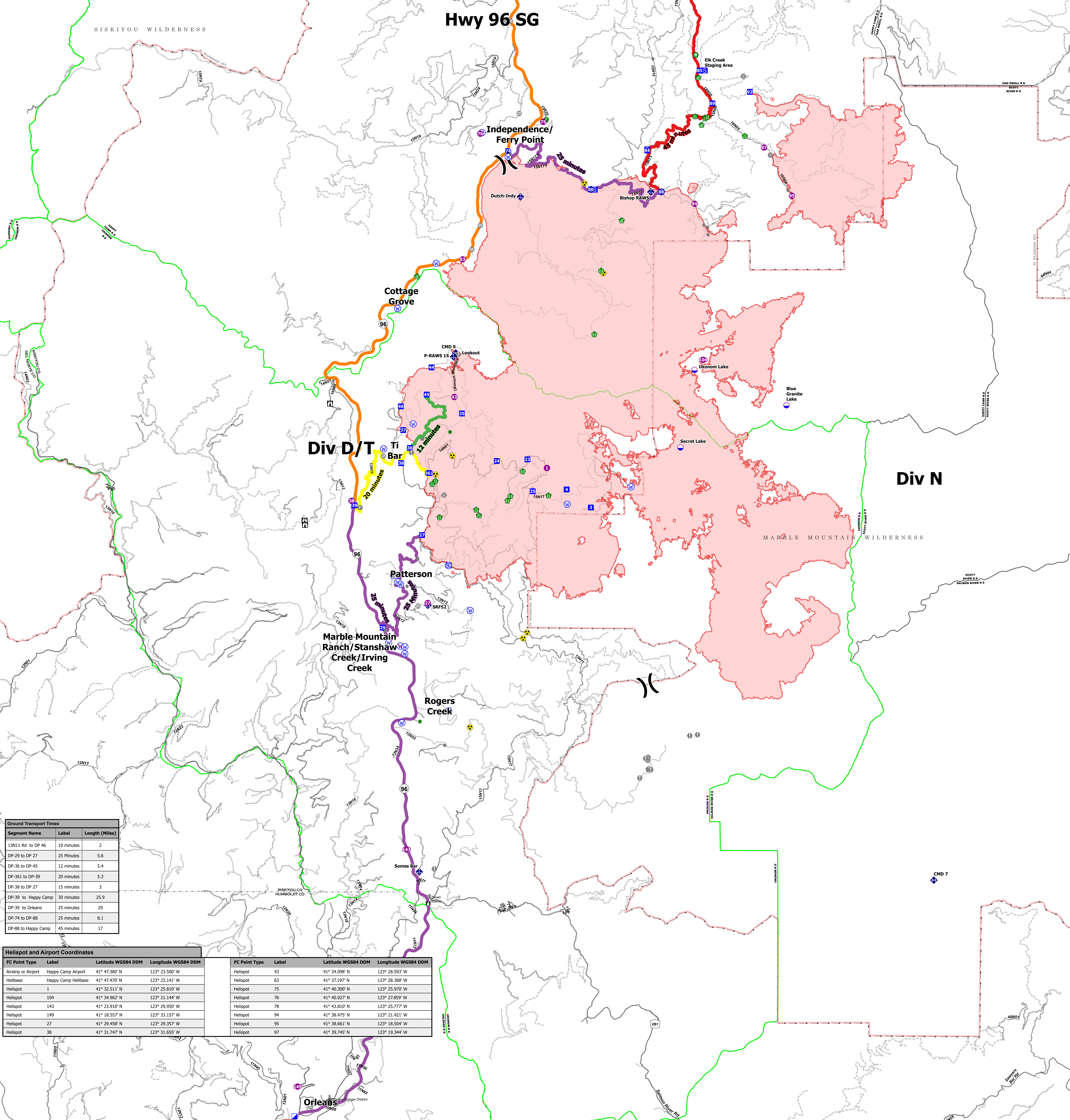


*****TRAVEL TIME FROM ORLEANS ICP*****							
Name	Complete Address	LAT: DD MM MMM W	LONG: DD MM MMM W	Travel Time All Times Approx	Phone	24 Hr	Level of Care
				AIR	GRND	Yes	
K'ma-w Medical Center	535 Airport Rd Hoopa, CA 99548	41° 02.511' N	123° 39.877' W	N/A	45 Min	(530) 625-4261	NO
Orleans Medical Clinic	525 Main Rd Orleans, CA 95556	41° 18.087' N	123° 38.838' W	N/A	5 Min	(530) 627-3452	NO
Mad River Community Hospital	3800 Jones Rd Arcata, CA 95521	40° 53.771' N	124° 05.478' W	25 Min	1 Hr 40 Min	(707) 826-8264 EXT 5	YES
Asante Rogue Regional Medical Center	2825 Barnett Rd Medford, OR 97504	42° 18.085' N	122° 49.842' W	50 Min	3 Hrs	(541) 789-7132	YES
Fairchild Medical Center	44 Bruce St Yreka, CA 99507	41° 43.101' N	122° 38.742' W	35 Min	2.5 Hrs	(530) 842-4121	YES
Providence St. Joseph Hospital	2700 Dobson St Eureka, CA 95501	40° 47.664' N	124° 06.541' W	30 Min	2 Hrs	(707) 269-4250 EXT 6	YES
Mercy Medical Center Redding	2175 Rosaline Ave Redding, CA 96001	40° 34.294' N	122° 23.748' W	45 Min	4 Hrs Over to 2nd floor	(530) 225-7200	YES
Legacy Emanuel Medical Center	2801 N. Carleton Ave Portland, OR 97223	46° 32.595' N	122° 40.181' W	3 Hrs	7 Hrs	(503) 413-4121	YES
UC Davis Medical Center	2315 Stockton Blvd Sacramento, CA 95817	38° 33.288' N	121° 27.349' W	2 Hrs	6.5 Hrs	(916) 3703-6576	YES



Segment Name	Label	Length (Miles)
13N11 Rd to DP 46	10 minutes	2
DP-29 to DP 27	25 Minutes	5.6
DP-36 to DP-45	12 minutes	5.4
DP-361 to DP-39	20 minutes	5.3
DP-38 to DP 27	15 minutes	3
DP-39 to Happy Camp	30 minutes	25.9
DP-39 to Orleans	25 minutes	29
DP-74 to DP-88	25 minutes	8.1
DP-88 to Happy Camp	45 minutes	17

Helispot and Airport Coordinates			
FC Point Type	Label	Latitude WGS84 DDM	Longitude WGS84 DDM
Airstrip or Airport	Happy Camp Airport	41° 47.380' N	123° 23.500' W
Helibase	Happy Camp Helibase	41° 47.470' N	123° 23.141' W
Helispot	1	41° 32.511' N	123° 25.810' W
Helispot	104	41° 34.962' N	123° 21.144' W
Helispot	143	41° 23.910' N	123° 29.950' W
Helispot	149	41° 18.557' N	123° 33.157' W
Helispot	27	41° 29.458' N	123° 29.357' W
Helispot	38	41° 31.747' N	123° 31.655' W
FC Point Type	Label	Latitude WGS84 DDM	Longitude WGS84 DDM
Helispot	43	41° 34.098' N	123° 28.593' W
Helispot	63	41° 37.197' N	123° 28.368' W
Helispot	75	41° 40.300' N	123° 25.970' W
Helispot	76	41° 40.027' N	123° 27.859' W
Helispot	78	41° 43.810' N	123° 25.777' W
Helispot	94	41° 38.475' N	123° 21.421' W
Helispot	95	41° 38.661' N	123° 18.504' W
Helispot	97	41° 39.745' N	123° 19.344' W

Medical Transportation
McCASH
 CA-SRF-000651
 Sept 8 2021



- Dip Site
- Helispot
- Helibase
- x Division Break
- Incident Command Post
- Drop Point
- Camp
- Staging Area
- Lookout
- Hot Spot - Spot Fire
- Value at Risk
- Other
- Fire Station
- Bridge
- Water Development or Draft Site
- Structure Wrap
- Stream Crossing
- Road Repair
- Resource Location
- Repair Point
- Mobile Weather Unit
- Internet Access
- Repeater
- Hazard
- Water Source
- Restricted Water Source
- Forest Service Office Locations
- 12 minutes
- 20 minutes
- 25 minutes
- 30 minutes
- 45 minutes
- Paved Road
- Gravel Road
- Dirt Roads
- Unimproved Roads
- Closed Roads
- Secondary Highway
- Paved Road
- Dirt (Not Paved)
- Wildfire Daily Fire Perimeter
- Administrative FS Boundary
- Federal Wilderness Boundary