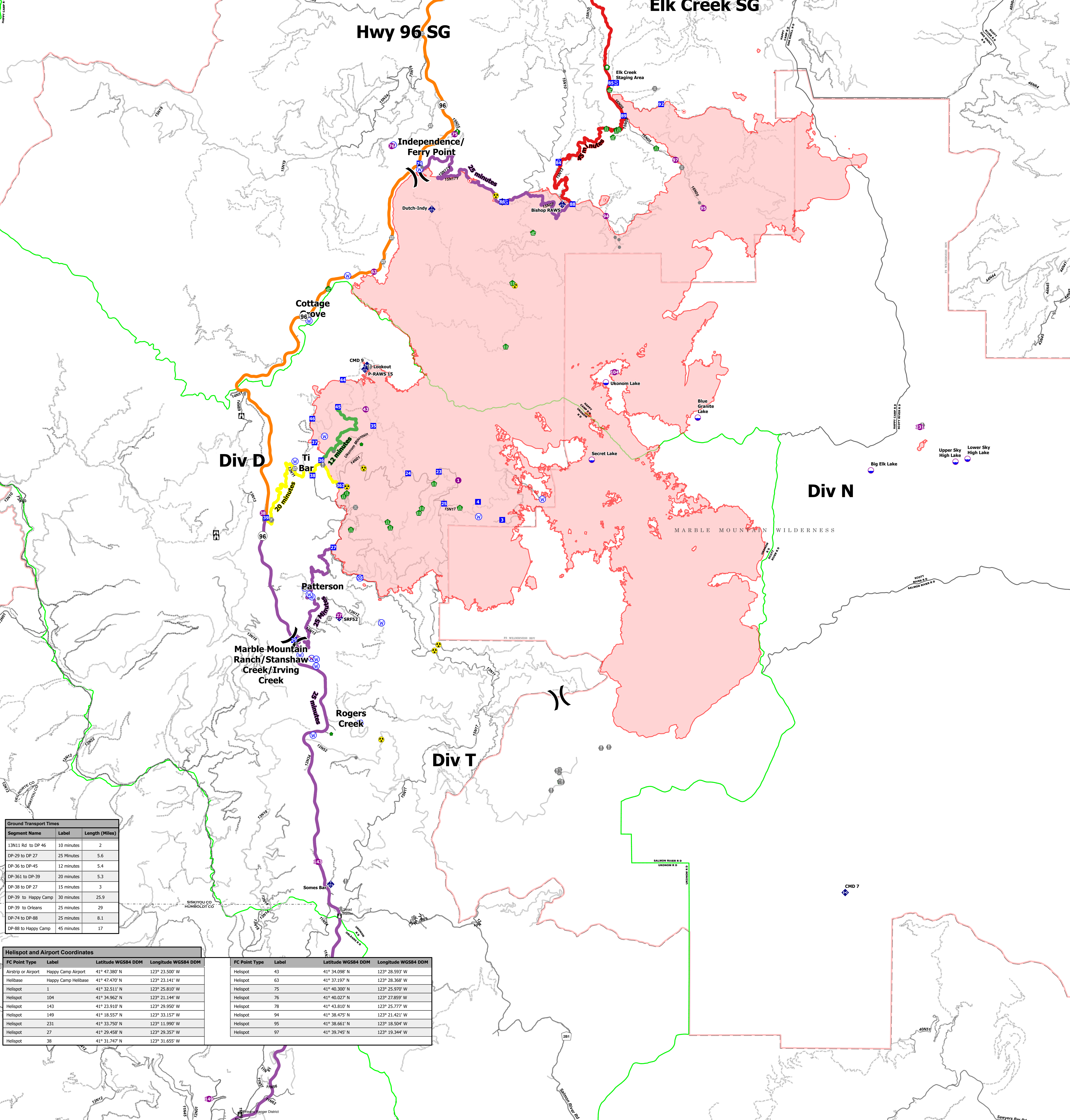


*****TRAVEL TIME FROM ORLEANS ICP*****							
Name	Complete Address	LAT: DD MM MMM W	LONG: DD MM MMM W	Travel Times All Times Approx	Phone	1 Mile pad	Level of Care
		AIR	GRND			Yes	
K'ima'w Medical Center	535 Airport Rd Hoopa, CA 99548	41° 02.511' N	123° 39.877' W	N/A	(530) 625-4261	NO	LOCAL CLINIC M-F 0800-1700
Orleans Medical Clinic	525 4th St Orleans, CA 99556	41° 18.057' N	123° 32.838' W	N/A	(530) 627-3452	NO	LOCAL CLINIC M-F 0800-1700
Mad River Community Hospital	3800 Jones Rd Arcata, CA 95521	40° 53.771' N	124° 05.478' W	25 Min	(707) 826-8264 EXT 7	YES	LEVEL 4
Asante Rogue Regional Medical Center	2825 Barnett Rd Medford, OR 97504	42° 18.085' N	124° 49.842' W	50 Min	(541) 789-7132	YES	LEVEL 2
Fairchild Medical Center	44 Bruce St Yreka, CA 99597	41° 43.101' N	122° 38.742' W	35 Min	(530) 842-4121	YES	LEVEL 4
Providence St. Joseph Hospital	2700 Dobson St Eureka, CA 95501	40° 47.044' N	124° 06.541' W	30 Min	(707) 269-4250 EXT 6	YES	LEVEL 3
Mercy Medical Center Redding	2175 Roseville Ave Redding, CA 96001	40° 34.294' N	122° 23.748' W	45 Min	(530) 225-7200	YES	LEVEL 2
Legacy Emanuel Medical Center	2801 N. Carleton Ave Portland, OR 97227	46° 13.595' N	122° 40.181' W	3 Hrs	(503) 413-4121	YES	LEVEL 1 ABA BURN CENTER
UC Davis Medical Center	2315 Stockton Blvd Sacramento, CA 95817	38° 33.288' N	121° 27.349' W	2 Hrs	(916) 703-6576	YES	LEVEL 1 ABA BURN CENTER



Segment Name	Label	Length (Miles)
I3N11 Rd to DP 46	10 minutes	2
DP-29 to DP 27	25 Minutes	5.6
DP-36 to DP-45	12 minutes	5.4
DP-361 to DP-39	20 minutes	5.3
DP-38 to DP 27	15 minutes	3
DP-39 to Happy Camp	30 minutes	25.9
DP-39 to Orleans	25 minutes	29
DP-74 to DP-88	25 minutes	8.1
DP-88 to Happy Camp	45 minutes	17

Helispot and Airport Coordinates				FC Point Type			
FC Point Type	Label	Latitude WGS84 DDM	Longitude WGS84 DDM	FC Point Type	Label	Latitude WGS84 DDM	Longitude WGS84 DDM
Airstrip or Airport	Happy Camp Airport	41° 47.380' N	123° 23.500' W	Helispot	43	41° 34.098' N	123° 28.593' W
Helibase	Happy Camp Helibase	41° 47.470' N	123° 23.141' W	Helispot	63	41° 37.197' N	123° 28.368' W
Helispot	1	41° 32.511' N	123° 25.810' W	Helispot	75	41° 40.300' N	123° 25.970' W
Helispot	104	41° 34.962' N	123° 21.144' W	Helispot	76	41° 40.027' N	123° 27.859' W
Helispot	143	41° 23.910' N	123° 29.950' W	Helispot	78	41° 43.810' N	123° 25.777' W
Helispot	149	41° 18.557' N	123° 33.157' W	Helispot	94	41° 38.475' N	123° 21.421' W
Helispot	231	41° 33.750' N	123° 11.990' W	Helispot	95	41° 38.661' N	123° 18.504' W
Helispot	27	41° 29.458' N	123° 29.357' W	Helispot	97	41° 39.745' N	123° 19.344' W
Helispot	38	41° 31.747' N	123° 31.655' W				

Medical Transportation
McCash
 CA-SRF-000651
 Sept 9 2021



- Dip Site
- Helispot
- Helibase
- Division Break
- Incident Command Post
- Drop Point
- Camp
- Staging Area
- Lookout
- Hot Spot - Spot Fire
- Value at Risk
- Other
- Fire Station
- Bridge
- Water Development or Draft Site
- Structure Wrap
- Stream Crossing
- Road Repair
- Resource Location
- Repair Point
- Mobile Weather Unit
- Internet Access
- Repeater
- Hazard
- Water Source
- Restricted Water Source
- Forest Service Office Locations
- 12 minutes
- 20 minutes
- 25 minutes
- 30 minutes
- 45 minutes
- Paved Road
- Dirt (Not Paved)
- Gravel Road
- Dirt Roads
- Unimproved Roads
- Closed Roads
- Secondary Highway
- Paved Roads
- Dirt (Not Paved)
- Wildfire Daily Fire Perimeter
- Administrative FS Boundary
- Federal Wilderness Boundary

Miles