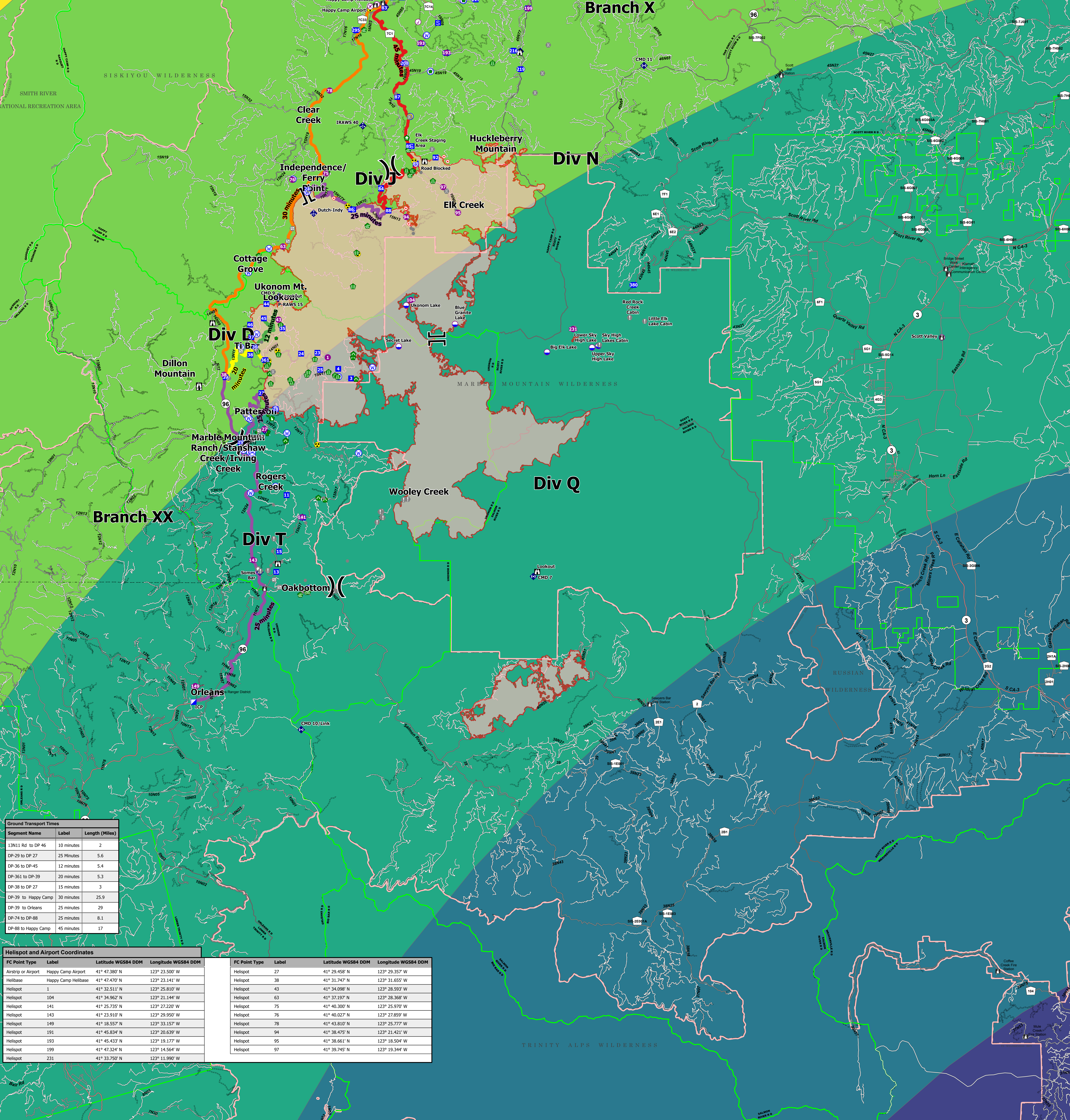


*****TRAVEL TIME FROM ORLEANS ICP*****						
Name	Complete Address	LAT: DD MM MMM W	LONG: DD MM MMM W	Travel Time All Times Approx	Phone	Level of Care
K'ima-w Medical Center	535 Airport Rd Hoonah, CA, 99548	41° 02.511' N	123° 39.877' W	N/A	(530) 625-4261	NO
Orleans Medical Clinic	525 Airport Rd Orleans, CA, 99556	41° 18.657' N	123° 32.838' W	N/A	(530) 627-3452	NO
Mad River Community Hospital	3800 Jones Rd Arcata, CA 95521	40° 53.771' N	124° 05.478' W	25 Min	(707) 826-8264	YES
Asante Rogue Regional Medical Center	2825 Barnett Rd Medford, OR 97504	42° 18.885' N	122° 49.842' W	50 Min	(541) 789-7132	YES
Fairchild Medical Center	44 Bruce St Yreka, CA 99507	41° 43.161' N	122° 38.742' W	35 Min	(530) 842-4121	YES
Providence St. Joseph Hospital	2700 Dobson St Eureka, CA 99901	40° 47.644' N	124° 06.541' W	30 Min	(707) 269-4250	YES
Mercy Medical Center Redding	2175 Rosaline Ave Redding, CA 99601	40° 34.294' N	122° 23.748' W	45 Min	(530) 225-7200	YES
Legacy Emanuel Medical Center	2801 N. Garbanben Ave Portland, OR 97227	45° 32.595' N	122° 40.181' W	3 Hrs	(503) 413-4121	YES
UC Davis Medical Center	2315 Stockton Blvd Sacramento, CA 95817	38° 33.288' N	121° 27.349' W	2 Hrs	(916) 370-6576	YES



Segment Name	Label	Length (Miles)
I3N11 Rd to DP 46	10 minutes	2
DP-29 to DP 27	25 Minutes	5.6
DP-36 to DP-45	12 minutes	5.4
DP-361 to DP-39	20 minutes	5.3
DP-38 to DP 27	15 minutes	3
DP-39 to Happy Camp	30 minutes	25.9
DP-39 to Orleans	25 minutes	29
DP-74 to DP-88	25 minutes	8.1
DP-88 to Happy Camp	45 minutes	17

Helispot and Airport Coordinates			
FC Point Type	Label	Latitude WGS84 DDM	Longitude WGS84 DDM
Airstrip or Airport	Happy Camp Airport	41° 47.380' N	123° 23.500' W
Helibase	Happy Camp Helibase	41° 47.470' N	123° 23.141' W
Helispot	1	41° 32.511' N	123° 25.810' W
Helispot	104	41° 34.962' N	123° 21.144' W
Helispot	141	41° 25.735' N	123° 27.220' W
Helispot	143	41° 23.910' N	123° 29.950' W
Helispot	149	41° 18.557' N	123° 33.157' W
Helispot	191	41° 45.834' N	123° 20.639' W
Helispot	193	41° 45.433' N	123° 19.177' W
Helispot	199	41° 47.324' N	123° 14.564' W
Helispot	231	41° 33.750' N	123° 11.990' W

Medical Air Transportation
McCash
 CA-SRF-000651
 Sept 21 2021
 88,946 acres as of 9/20/2021, 1231 Hrs



Forest Service Office Locations

Event Point_forTable

Air Operations

- Airstrip or Airport
- Helibase
- Label Point
- Event Point
- Air Operations
- Check Point
- Dip Site
- Helispot

Assignment Breaks

- Division Break
- Branch Break

Logistics

- Incident Command Post
- Drop Point
- Camp
- Staging Area

Operations

- Lookout
- Resource Location
- Repair Point
- Dozer Push
- Culvert
- Mobile Weather Unit
- Internet Access
- Repeater
- Safety
- Hazard

Water

- Stream Crossing
- Road Repair
- Resource Location
- Repair Point
- Dozer Push
- Culvert
- Mobile Weather Unit
- Internet Access
- Repeater
- Safety
- Hazard

Forest Service Roads

Symbol, Surface_Type, Oper_Maint_Level

- Paved Road
- Dirt Road
- Unimproved Roads
- Closed Roads
- Primary Highway
- Secondary Highway
- Paved Roads
- Dirt (Not Paved)
- Roads_CENSUS

HIFLD Roads

ROUTE_TYPE, Paved, FuncClass

- Primary Highway
- Secondary Highway
- Paved Roads
- Dirt (Not Paved)
- Roads_CENSUS

Travel Time

- 12 minutes
- 20 minutes
- 25 minutes
- 30 minutes
- 45 minutes

Event Polygon

- Polygon Type
- Wetters Daily Fire Perimeter

Travel distance and time

- 20 - 40 miles (13-21 minutes)
- 40 - 60 miles (21-30 minutes)
- 60 - 80 miles (30-39 minutes)
- 80 - 100 miles (39-49 minutes)
- 100 - 120 miles (49-58 minutes)

Forest Service Boundaries

- Proclaimed FS Boundary
- Administrative FS Boundary
- Range District Boundary
- Federal Designated Boundary
- Other Designated Boundary
- County Boundary

Runway

- Runway

Mobile Maps

QR Code

Scale

0 1 2 3 Miles

9/20/2021, 1056hrs