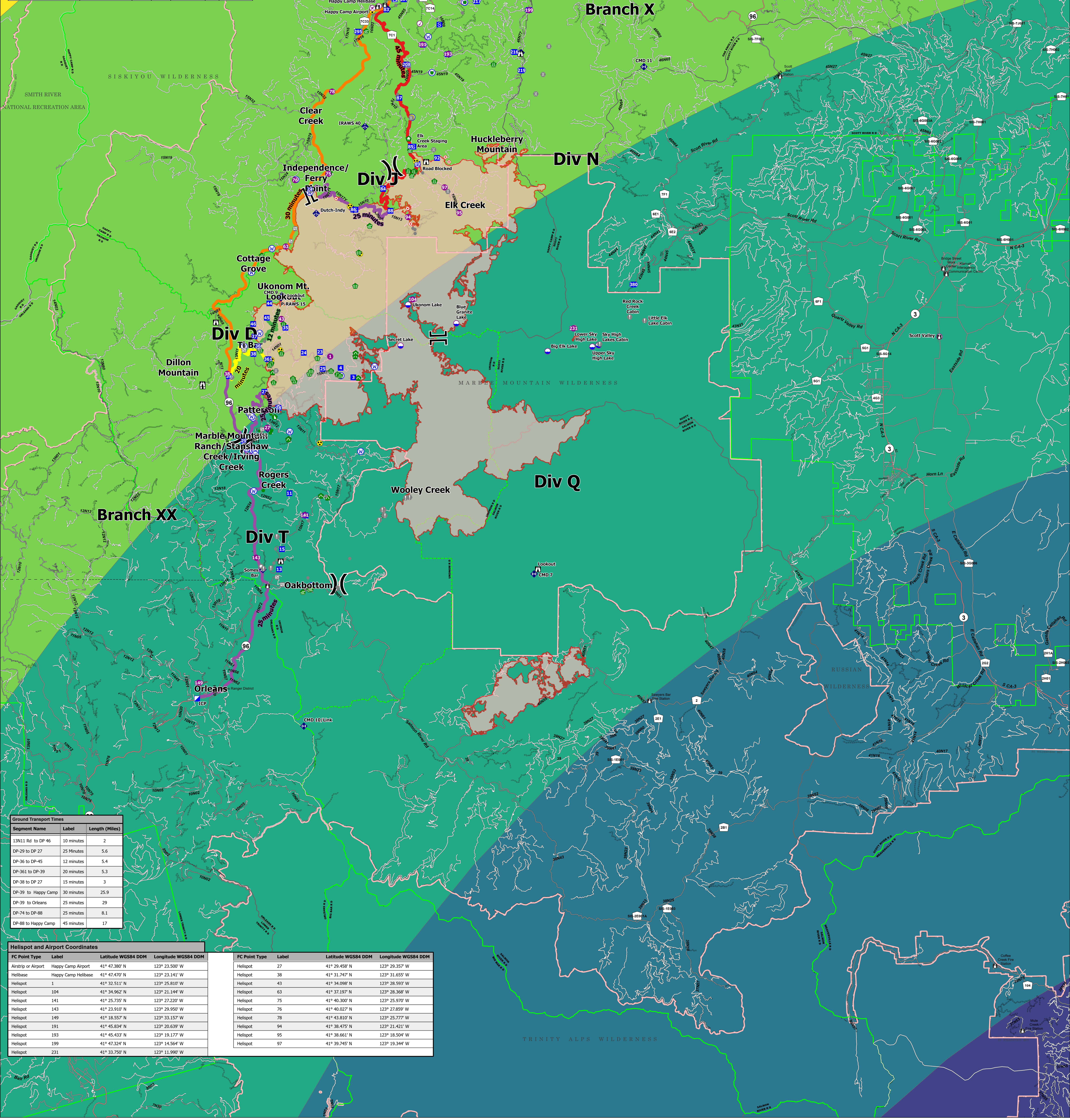


S. Hospitals						
Name	Complete Address	LAT: DD MM MMM N	LONG: DD MM MMM W	Travel Time	Phone	Level of Care
K'ima'w Medical Center	535 Airport Rd Hoopa, CA, 99548	41° 02' 51" N	123° 39' 87" W	N/A	(530) 625-4261	NO
Orleans Medical Clinic	235 1st St Orleans, CA, 99556	41° 18' 03" N	123° 32' 83" W	N/A	(530) 627-3452	NO
Mad River Community Hospital	3900 Janes Rd Arcata, CA 95521	40° 53' 77" N	124° 05' 47" W	25 Min	(707) 826-8264	YES
Asante Rogue Regional Medical Center	2825 Barnett Rd Medford, OR 97504	42° 19' 05" N	122° 49' 84" W	50 Min	(541) 789-7132	YES
Fairchild Medical Center	444 Bevier St Yreka, CA 96097	41° 43' 16" N	122° 38' 74" W	35 Min	(530) 842-4121	YES
Providence St. Joseph Hospital	2700 Dodson St Eureka, CA 95501	40° 47' 04" N	124° 08' 54" W	30 Min	(707) 269-4250	YES
Mercy Medical Center	2172 Rosaline Ave Redding, CA 96001	40° 34' 24" N	122° 23' 74" W	45 Min	(530) 225-7200	YES
Legacy Emanuel Medical Center	2315 Slocum Blvd Portland, OR 97227	45° 32' 59" N	122° 40' 18" W	3 Hrs	(503) 413-4121	YES
UC Davis Medical Center	2315 Slocum Blvd Sacramento, CA 95817	38° 33' 38" N	121° 27' 34" W	2 Hrs	(916) 703-6576	YES



Segment Name	Label	Length (Miles)
13N11 Rd to DP 46	10 minutes	2
DP-29 to DP 27	25 Minutes	5.6
DP-36 to DP-45	12 minutes	5.4
DP-361 to DP-39	20 minutes	5.3
DP-38 to DP 27	15 minutes	3
DP-39 to Happy Camp	30 minutes	25.9
DP-39 to Orleans	25 minutes	29
DP-74 to DP-88	25 minutes	8.1
DP-88 to Happy Camp	45 minutes	17

FC Point Type	Label	Latitude WGS84 DDM	Longitude WGS84 DDM	FC Point Type	Label	Latitude WGS84 DDM	Longitude WGS84 DDM
Airstrip or Airport	Happy Camp Airport	41° 47' 38" N	123° 23' 50" W	Helispot	27	41° 29' 45" N	123° 29' 35" W
Helibase	Happy Camp Helibase	41° 47' 40" N	123° 23' 14" W	Helispot	38	41° 31' 74" N	123° 31' 65" W
Helispot	1	41° 32' 51" N	123° 25' 81" W	Helispot	43	41° 34' 09" N	123° 28' 59" W
Helispot	104	41° 34' 96" N	123° 21' 14" W	Helispot	63	41° 37' 19" N	123° 28' 36" W
Helispot	141	41° 25' 73" N	123° 27' 22" W	Helispot	75	41° 40' 30" N	123° 25' 97" W
Helispot	143	41° 23' 91" N	123° 29' 95" W	Helispot	76	41° 40' 02" N	123° 27' 85" W
Helispot	149	41° 18' 55" N	123° 33' 15" W	Helispot	78	41° 43' 81" N	123° 25' 77" W
Helispot	191	41° 45' 83" N	123° 20' 63" W	Helispot	94	41° 38' 47" N	123° 21' 42" W
Helispot	193	41° 45' 43" N	123° 19' 17" W	Helispot	95	41° 38' 66" N	123° 18' 50" W
Helispot	199	41° 47' 32" N	123° 14' 56" W	Helispot	97	41° 39' 74" N	123° 19' 34" W
Helispot	231	41° 33' 75" N	123° 11' 99" W				

Medical Air Transportation
McCASH
 CA-SRF-000651
 Sept 21 2021



- Forest Service Office Locations
- Event Point for Table
- Air Operations
 - Airstrip or Airport
 - Helispot
 - Helibase
 - Label Point
- Event Point
- Air Operations
 - Check Point
 - Dip Site
 - Helispot
- Assignment
- Division Break
- Branch Break
- Incident Command Post
- Drop Point
- Camp
- Staging Area

- Operations
 - Lookout
- Fire
 - Hot Spot - Spot Fire
- Reference
 - Value at Risk
 - Other
 - Landmark
 - Gate
 - Fire Station
 - Repeater
 - Bridge
- Repair
 - Water Development or Draft Site
 - Structure Wrap
- Stream Crossing
- Road Repair
- Resource Location
- Repair Point
- Door Push
- Culvert
- Communications
 - Mobile Weather Unit
 - Internet Access
 - Repeater
- Safety
 - Hazard

- Water
 - Water Source
 - Restricted Water Source
- Transport Times
- Travel Time
 - 12 minutes
 - 25 minutes
 - 30 minutes
 - 45 minutes
- Event Polygon
- Polygon Type
 - Wildfire Daily Fire Perimeter

- Forest Service Roads
- Symbol, Surface_Type, Oper_Maint_Level
- Route Type, Paved, FuncClass
- Primary Highway
- Secondary Highway
- Paved Roads
- Dirt (Not Paved)
- Roads, CENSUS

Runway

Proclaimed FS Boundary

Administrative FS Boundary

Ranger District Boundary

Federal Wilderness Boundary

Other Designated Boundary

County Boundary

Travel distance and time

- 20 - 40 miles (13-21 minutes)
- 40 - 60 miles (21-30 minutes)
- 60 - 80 miles (29-39 minutes)
- 80 - 100 miles (39-49 minutes)
- 100 - 120 miles (49-58 minutes)

0 1 2 3 Miles