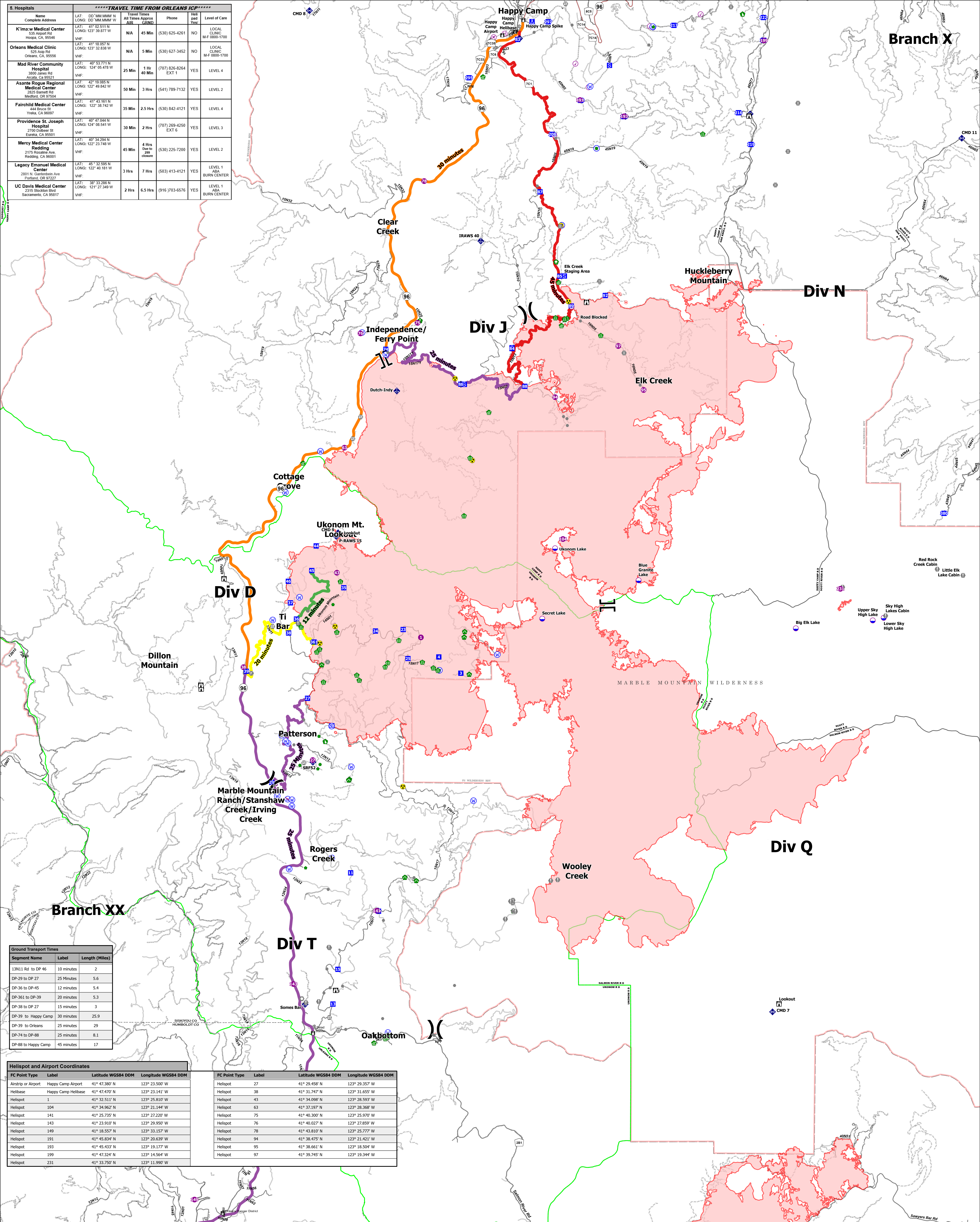


*****TRAVEL TIME FROM ORLEANS ICP*****						
Name	Complete Address	LAT: DD° MM' MMM" N	LONG: DD° MM' MMM" W	Travel Time All Times Approx	Phone	Level of Care
K'ima:w Medical Center	535 Airport Rd Hoopa, CA, 99548	41° 02' 51.1" N	123° 39' 87.7" W	N/A	(530) 625-4261	LOCAL CLINIC M-F 0800-1700
Orleans Medical Clinic	575 5th St Orleans, CA, 99556	41° 18' 03" N	123° 32' 838" W	N/A	(530) 627-3452	LOCAL CLINIC M-F 0800-1700
Mad River Community Hospital	3900 James Rd Arcata, CA 95521	40° 53' 77.1" N	124° 05' 478" W	25 Min	(707) 826-8264 EXT 1	YES
Asante Rogue Regional Medical Center	2825 Barnett Rd Medford, OR 97504	42° 19' 085" N	122° 49' 842" W	50 Min	(541) 789-7132	YES
Fairchild Medical Center	444 Geneva St Yreka, CA 96097	41° 43' 161" N	122° 38' 742" W	35 Min	(530) 842-4121	YES
Providence St. Joseph Hospital	2700 Dolbeer St Eureka, CA 95501	40° 47' 044" N	124° 08' 541" W	30 Min	(707) 269-4250 EXT 5	YES
Mercy Medical Center Redding	2172 Rosaline Ave Redding, CA 96001	40° 54' 284" N	122° 23' 748" W	45 Min	(530) 225-7200	YES
Legacy Emanuel Medical Center	2301 N. Charleston Ave Portland, OR 97227	45° 32' 595" N	122° 40' 181" W	3 Hrs	(503) 413-4121	YES
UC Davis Medical Center	2315 Stockton Blvd Sacramento, CA 95817	38° 33' 288" N	121° 27' 349" W	2 Hrs	(916) 703-6576	YES



Segment Name	Label	Length (Miles)
13N11 Rd to DP 46	10 minutes	2
DP-29 to DP 27	25 Minutes	5.6
DP-36 to DP-45	12 minutes	5.4
DP-361 to DP-39	20 minutes	5.3
DP-38 to DP 27	15 minutes	3
DP-39 to Happy Camp	30 minutes	25.9
DP-39 to Orleans	25 minutes	29
DP-74 to DP-88	25 minutes	8.1
DP-88 to Happy Camp	45 minutes	17

FC Point Type	Label	Latitude WGS84 DDM	Longitude WGS84 DDM
Airstrip or Airport	Happy Camp Airport	41° 47' 380" N	123° 23' 500" W
Helibase	Happy Camp Helibase	41° 47' 470" N	123° 23' 141" W
Helispot	1	41° 32' 511" N	123° 25' 810" W
Helispot	104	41° 34' 962" N	123° 21' 144" W
Helispot	141	41° 25' 735" N	123° 27' 220" W
Helispot	143	41° 23' 910" N	123° 29' 950" W
Helispot	149	41° 18' 557" N	123° 33' 157" W
Helispot	191	41° 45' 834" N	123° 20' 637" W
Helispot	193	41° 45' 433" N	123° 19' 177" W
Helispot	199	41° 47' 324" N	123° 14' 564" W
Helispot	231	41° 33' 750" N	123° 11' 990" W

FC Point Type	Label	Latitude WGS84 DDM	Longitude WGS84 DDM
Helispot	27	41° 29' 458" N	123° 29' 357" W
Helispot	38	41° 31' 747" N	123° 31' 655" W
Helispot	43	41° 34' 098" N	123° 28' 593" W
Helispot	63	41° 37' 197" N	123° 28' 368" W
Helispot	75	41° 40' 300" N	123° 25' 970" W
Helispot	76	41° 40' 027" N	123° 27' 859" W
Helispot	78	41° 43' 810" N	123° 25' 777" W
Helispot	94	41° 38' 475" N	123° 21' 421" W
Helispot	95	41° 38' 661" N	123° 18' 504" W
Helispot	97	41° 39' 745" N	123° 19' 344" W

**Medical Transportation**  
**McCash**  
 CA-SRF-000651  
 Sept 21 2021



- Check Point
- Dip Site
- Helispot
- Helibase
- × Division Break
- × Branch Break
- Incident Command Post
- Drop Point
- Camp
- Staging Area
- Lookout
- Hot Spot - Spot Fire
- Value at Risk
- Other
- Landmark
- Gate
- Fire Station
- Bridge
- Water Development or Draft Site
- Structure Wrap
- Stream Crossing
- Road Repair
- Resource Location
- Repair Point
- Dozer Push
- Culvert
- Mobile Weather Unit
- ◆ Internet Access
- ◆ Repeater
- ◆ Hazard
- ◆ Water Source
- ◆ Restricted Water Source
- ◆ Forest Service Office Locations
- ◆ 12 minutes
- ◆ 20 minutes

- 25 minutes
- 30 minutes
- 45 minutes
- Paved Road
- Gravel Road
- Dirt Roads
- Unimproved Roads
- Closed Roads
- Secondary Highway
- Paved Roads
- Dirt (Not Paved)
- Wildfire Daily Fire Perimeter
- Administrative FS Boundary
- Federal Wilderness Boundary

Miles