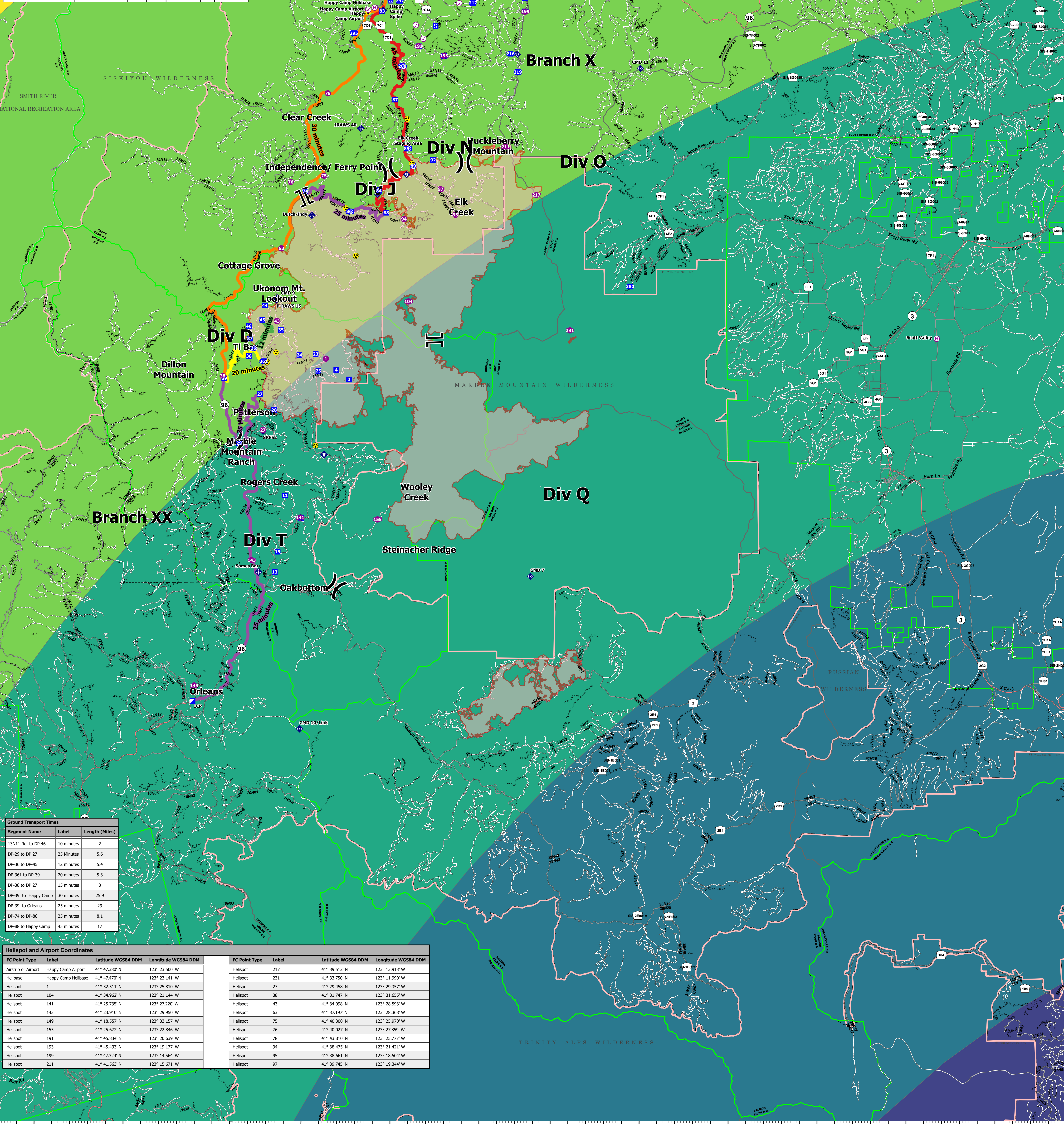


5. Hospitals							
*****TRAVEL TIME FROM ORLEANS ICP*****							
Name	Complete Address	LAT: DD MM MMM W	LONG: DD MM MMM W	Travel Time	All Times Approx	Phone	Level of Care
				AIR	GRND		
K'maw Medical Center	535 Airport Rd Heald, CA 95548	41° 02.511' N	123° 39.877' W	N/A	45 Min	(530) 625-4261	NO
Orleans Medical Clinic	525 4th St Orleans, CA 95556	41° 18.657' N	123° 32.838' W	N/A	5 Min	(530) 627-3452	NO
Mad River Community Hospital	3800 Jones Rd Arcata, CA 95521	40° 53.771' N	124° 05.478' W	25 Min	1 Hr 40 Min	(707) 826-8264 EXT 5	YES
Asante Rogue Regional Medical Center	2825 Barnett Rd Medford, OR 97504	42° 18.085' N	122° 49.842' W	50 Min	3 Hrs	(541) 789-7132	YES
Fairchild Medical Center	44 Bruce St Yreka, CA 96097	41° 43.161' N	122° 38.742' W	35 Min	2.5 Hrs	(530) 842-4121	YES
Providence St. Joseph Hospital	2700 Dobson St Redding, CA 96001	40° 47.644' N	122° 06.541' W	30 Min	2 Hrs	(707) 269-4250 EXT 6	YES
Mercy Medical Center Redding	2175 Rosaline Ave Redding, CA 96001	40° 34.294' N	122° 23.748' W	45 Min	4 Hrs Dn to 2hr Dnover	(530) 225-7200	YES
Legacy Emanuel Medical Center	2801 N. Garbanben Ave Portland, OR 97223	46° 12.505' N	122° 40.181' W	3 Hrs	7 Hrs	(503) 413-4121	YES
UC Davis Medical Center	2315 Stockton Blvd Sacramento, CA 95817	38° 33.288' N	121° 27.349' W	2 Hrs	6.5 Hrs	(916) 370-6576	YES



Segment Name	Label	Length (Miles)
13N11 Rd to DP 46		10 minutes 2
DP-29 to DP 27		25 Minutes 5.6
DP-36 to DP-45		12 minutes 5.4
DP-361 to DP-39		20 minutes 5.3
DP-38 to DP 27		15 minutes 3
DP-39 to Happy Camp		30 minutes 25.9
DP-39 to Orleans		25 minutes 29
DP-74 to DP-88		25 minutes 8.1
DP-88 to Happy Camp		45 minutes 17

Helispot and Airport Coordinates			
FC Point Type	Label	Latitude WGS84 DDM	Longitude WGS84 DDM
Airstrip or Airport	Happy Camp Airport	41° 47.380' N	123° 23.500' W
Helibase	Happy Camp Helibase	41° 47.470' N	123° 23.141' W
Helispot	1	41° 32.511' N	123° 25.810' W
Helispot	104	41° 34.962' N	123° 21.144' W
Helispot	141	41° 25.735' N	123° 27.220' W
Helispot	143	41° 23.910' N	123° 29.950' W
Helispot	149	41° 18.557' N	123° 33.157' W
Helispot	155	41° 25.672' N	123° 22.846' W
Helispot	191	41° 45.834' N	123° 20.639' W
Helispot	193	41° 45.433' N	123° 19.177' W
Helispot	199	41° 47.324' N	123° 14.564' W
Helispot	211	41° 41.563' N	123° 15.671' W

**Medical Air Transportation**  
McCash  
CA-SRF-000651  
Sept 25, 2021

92,883 acres as of 9/24/2021, 1715 Hrs

<p><b>Air Operations</b></p> <ul style="list-style-type: none"> <li> Airstrip or Airport</li> <li> Check Point</li> <li> Helispot</li> <li> Helibase</li> <li> Assignment Breaks</li> <li> Division Break</li> <li> Branch Break</li> <li> Incident Command Post</li> </ul>	<p><b>Communications</b></p> <ul style="list-style-type: none"> <li> Mobile Weather Unit</li> <li> Internet Access</li> <li> Repeater</li> <li> Hazard</li> </ul>	<p><b>Travel Time</b></p> <ul style="list-style-type: none"> <li> 12 minutes</li> <li> 20 minutes</li> <li> 25 minutes</li> <li> 30 minutes</li> <li> 45 minutes</li> <li> Primary Highway</li> <li> Secondary Highway</li> <li> Paved Roads</li> <li> Dirt (Not Paved)</li> </ul>	<p><b>Other Designated Boundary</b></p> <ul style="list-style-type: none"> <li> County Boundary</li> <li> Travel distance and time</li> <li> Wildfire Daily Fire Perimeter</li> <li> Runway</li> <li> Proclaimed FS Boundary</li> <li> Administrative FS Boundary</li> <li> Ranger District Boundary</li> <li> Federal Wilderness Boundary</li> </ul>
---	---	--	---

9/25/2021, 2:10:08rs