

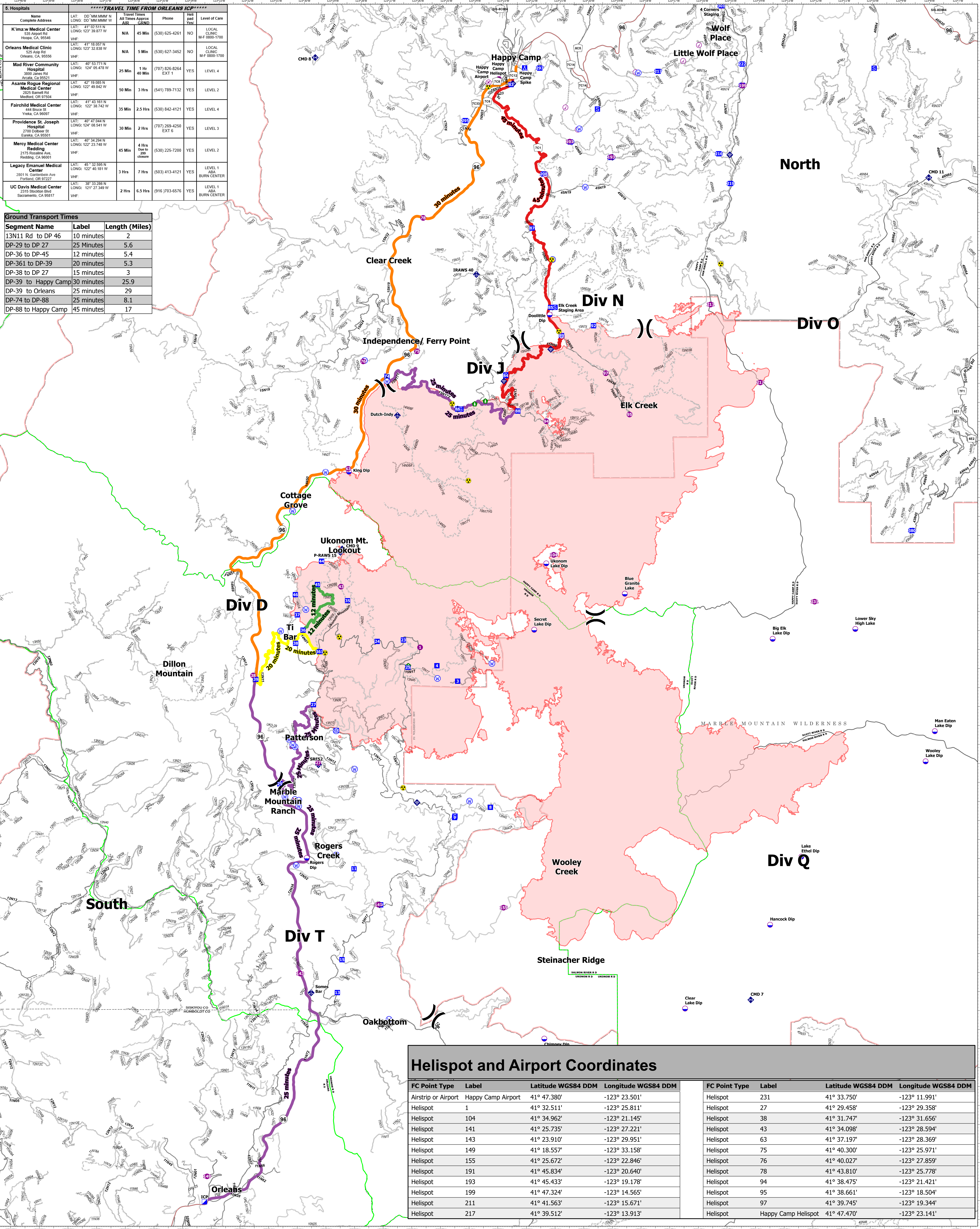
5. Hospitals

TRAVEL TIME FROM ORLEANS ICP

Name	Complete Address	LAT: DD MM MMM W	LONG: DD MM MMM W	Travel Time All Times Approx	Phone	Time Paid Yes	Level of Care
K'ima-w Medical Center	535 Airport Rd Hosena, CA, 95548	41° 02' 51.1" N	123° 39' 57.7" W	N/A	(530) 625-4261	NO	LOCAL CLINIC M-F 0800-1700
Orleans Medical Clinic	525 Airport Rd Orleans, CA, 95556	41° 18' 05.7" N	123° 32' 53.8" W	N/A	(530) 627-3452	NO	LOCAL CLINIC M-F 0800-1700
Mad River Community Hospital	3800 Jones Rd Arcata, CA 95521	40° 53' 77.1" N	124° 05' 47.8" W	25 Min	(707) 826-6264	YES	LEVEL 4
Asante Rogue Regional Medical Center	2825 Barnett Rd Medford, OR 97504	41° 18' 08.5" N	124° 49' 44.2" W	50 Min	(541) 789-7132	YES	LEVEL 2
Fairchild Medical Center	44 Bruce St Yreka, CA 96097	41° 43' 16.1" N	122° 38' 74.2" W	35 Min	(530) 842-4121	YES	LEVEL 4
Providence St. Joseph Hospital	2700 Dobbler St Medford, CA 97501	41° 47' 54.4" N	124° 08' 54.1" W	30 Min	(707) 269-4250 EXT 6	YES	LEVEL 3
Mercy Medical Center Redding	2175 Roseville Ave. Redding, CA 96001	40° 34' 29.4" N	122° 23' 74.8" W	45 Min	(530) 225-7200	YES	LEVEL 2
Legacy Emanuel Medical Center	2801 N. Carleton Ave Eugene, OR 97402	45° 32' 59.5" N	122° 40' 18.1" W	3 Hrs	(503) 413-4121	YES	LEVEL 1 ABA BURN CENTER
UC Davis Medical Center	2315 Stockton Blvd Sacramento, CA 95817	38° 33' 28.8" N	121° 27' 34.9" W	2 Hrs	(916) 370-6576	YES	LEVEL 1 ABA BURN CENTER

Ground Transport Times

Segment Name	Label	Length (Miles)
13N11 Rd to DP 46	10 minutes	2
DP-29 to DP 27	25 Minutes	5.6
DP-36 to DP-45	12 minutes	5.4
DP-361 to DP-39	20 minutes	5.3
DP-38 to DP 27	15 minutes	3
DP-39 to Happy Camp	30 minutes	25.9
DP-39 to Orleans	25 minutes	29
DP-74 to DP-88	25 minutes	8.1
DP-88 to Happy Camp	45 minutes	17



Helispot and Airport Coordinates

FC Point Type	Label	Latitude WGS84 DDM	Longitude WGS84 DDM
Airstrip or Airport	Happy Camp Airport	41° 47.380'	-123° 23.501'
Helispot	1	41° 32.511'	-123° 25.811'
Helispot	104	41° 34.962'	-123° 21.145'
Helispot	141	41° 25.735'	-123° 27.221'
Helispot	143	41° 23.910'	-123° 29.951'
Helispot	149	41° 18.557'	-123° 33.158'
Helispot	155	41° 25.672'	-123° 22.846'
Helispot	191	41° 45.834'	-123° 20.640'
Helispot	193	41° 45.433'	-123° 19.178'
Helispot	199	41° 47.324'	-123° 14.565'
Helispot	211	41° 41.563'	-123° 15.671'
Helispot	217	41° 39.512'	-123° 13.913'

FC Point Type	Label	Latitude WGS84 DDM	Longitude WGS84 DDM
Helispot	231	41° 33.750'	-123° 11.991'
Helispot	27	41° 29.458'	-123° 29.358'
Helispot	38	41° 31.747'	-123° 31.656'
Helispot	43	41° 34.098'	-123° 28.594'
Helispot	63	41° 37.197'	-123° 28.369'
Helispot	75	41° 40.300'	-123° 25.971'
Helispot	76	41° 40.027'	-123° 27.859'
Helispot	78	41° 43.810'	-123° 25.778'
Helispot	94	41° 38.475'	-123° 21.421'
Helispot	95	41° 38.661'	-123° 18.504'
Helispot	97	41° 39.745'	-123° 19.344'
Helispot	Happy Camp Helispot	41° 47.470'	-123° 23.141'

Transportation
McCash
 CA-SRF-000651
 October 3, 2021
 93,514 acres as of 9/30/2021, 1915 Hrs

- Air Operations
 - Airstrip or Airport
 - Check Point
 - Dip Site
 - Helispot
 - Assignment Breaks
 - Division Break
- Logistics
 - Incident Command Post
 - Drop Point
 - Camp
 - Staging Area
 - Repair
 - Landing or Log Deck
- Hazard Tree
 - Communications
 - Mobile Weather Unit
 - Internet Access
 - Repeater
 - Safety
 - Hazard

- Water
 - Water Source
 - Restricted Water Source
 - Secondary Highway
 - Paved Roads
 - Dirt (Not Paved)
 - Gravel Road
 - Unimproved Roads
- Other Designated Boundary
 - Closed Roads
 - Runway
 - Wildfire Daily Fire Perimeter
 - Proclaimed FS Boundary
 - Administrative FS Boundary
 - Ranger District Boundary
 - Federal Wilderness Boundary
 - Other Designated Boundary

- County Boundary
- Transport Times
 - 12 minutes
 - 20 minutes
 - 25 minutes
 - 30 minutes
 - 45 minutes

0 1 2 3 Miles

NAD 1983 UTM Zone 10N
AK MET
10/2/2021, 12:55:08