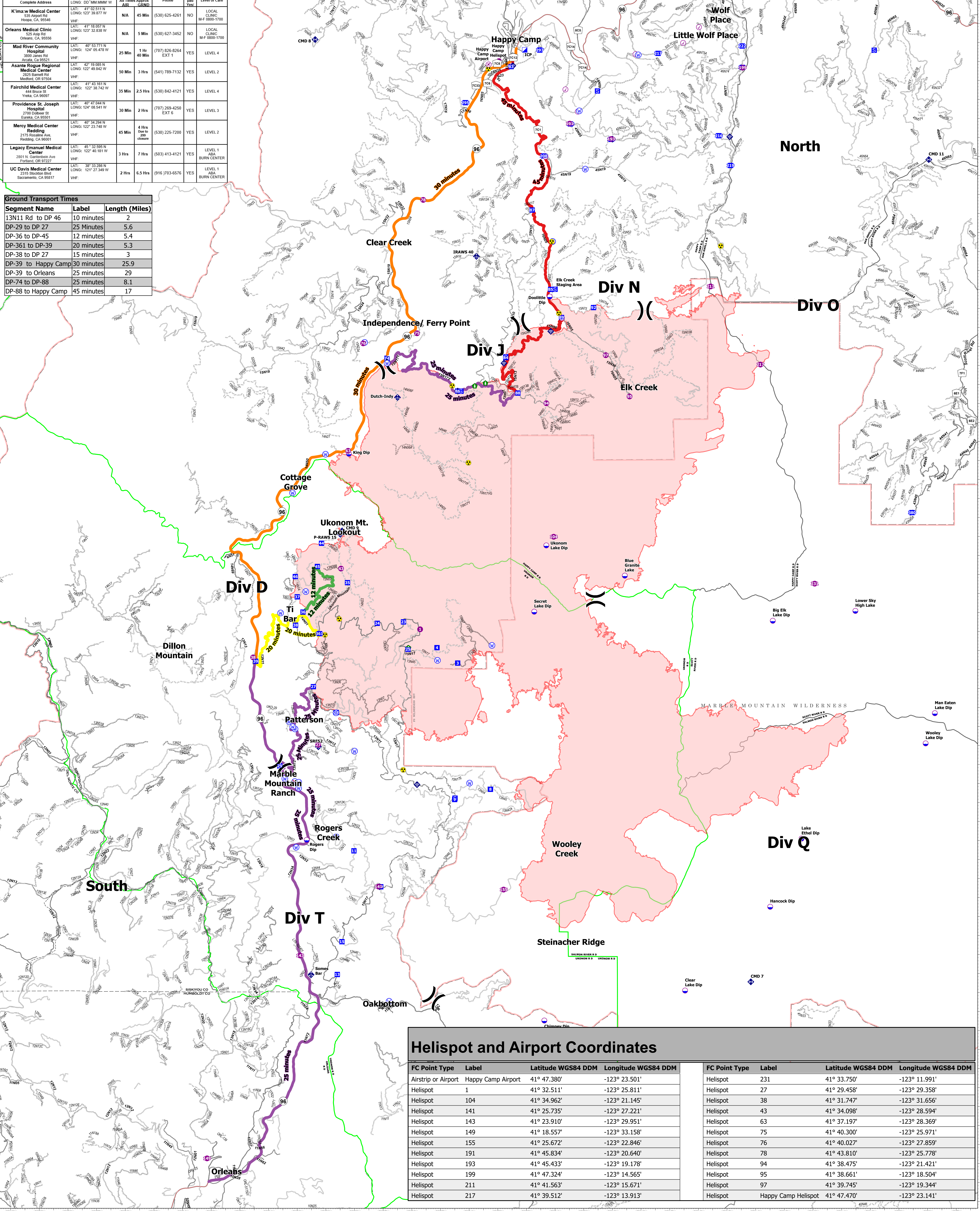


TRAVEL TIME FROM ORLEANS ICP						
Name	Complete Address	LAT: DD MM MMM W	LONG: DD MM MMM W	Travel Time All Times Approx	Phone	Level of Care
K'ma-w Medical Center	535 Airport Rd Hooda, CA, 95548	41° 02.511' N	123° 39.877' W	NIA 45 Min	(530) 625-4261	LOCAL CLINIC M-F 0800-1700
Orleans Medical Clinic	325 Main Rd Orleans, CA, 95556	41° 18.057' N	123° 32.838' W	NIA 5 Min	(530) 627-3452	LOCAL CLINIC M-F 0800-1700
Mad River Community Hospital	3800 Jones Rd Arcata, CA 95521	40° 53.771' N	124° 05.478' W	25 Min 1 Hr 40 Min	(707) 826-8264 EXT 7	YES LEVEL 4
Asante Rogue Regional Medical Center	2825 Barnett Rd Medford, OR 97504	42° 18.085' N	122° 49.842' W	50 Min 3 Hrs	(541) 789-7132	YES LEVEL 2
Fairchild Medical Center	44 Bruce St Yreka, CA 99597	41° 43.101' N	122° 38.742' W	35 Min 2.5 Hrs	(530) 842-4121	YES LEVEL 4
Providence St. Joseph Hospital	2700 Dobson St Redding, CA 96001	40° 47.664' N	122° 06.541' W	30 Min 2 Hrs	(707) 269-4250 EXT 6	YES LEVEL 3
Mercy Medical Center Redding	2175 Roseville Ave Redding, CA 96001	40° 34.294' N	122° 23.748' W	45 Min 4 Hrs Over to 2nd floor	(530) 225-7200	YES LEVEL 2
Legacy Emanuel Medical Center	2801 N. Carleton Ave Portland, OR 97223	46° 13.509' N	122° 40.181' W	3 Hrs 7 Hrs	(503) 413-4121	YES LEVEL 1 ABA BURN CENTER
UC Davis Medical Center	2315 Stockton Blvd Sacramento, CA 95817	38° 33.288' N	121° 27.349' W	2 Hrs 6.5 Hrs	(916) 703-6576	YES LEVEL 1 ABA BURN CENTER

Segment Name	Label	Length (Miles)
13N11 Rd to DP 46	10 minutes	2
DP-29 to DP 27	25 Minutes	5.6
DP-36 to DP-45	12 minutes	5.4
DP-361 to DP-39	20 minutes	5.3
DP-38 to DP 27	15 minutes	3
DP-39 to Happy Camp	30 minutes	25.9
DP-39 to Orleans	25 minutes	29
DP-74 to DP-88	25 minutes	8.1
DP-88 to Happy Camp	45 minutes	17



Helispot and Airport Coordinates

FC Point Type	Label	Latitude WGS84 DDM	Longitude WGS84 DDM	FC Point Type	Label	Latitude WGS84 DDM	Longitude WGS84 DDM
Airstrip or Airport	Happy Camp Airport	41° 47.380'	-123° 23.501'	Helispot	231	41° 33.750'	-123° 11.991'
Helispot	1	41° 32.511'	-123° 25.811'	Helispot	27	41° 29.458'	-123° 29.358'
Helispot	104	41° 34.962'	-123° 21.145'	Helispot	38	41° 31.747'	-123° 31.656'
Helispot	141	41° 25.735'	-123° 27.221'	Helispot	43	41° 34.098'	-123° 28.594'
Helispot	143	41° 23.910'	-123° 29.951'	Helispot	63	41° 37.197'	-123° 28.369'
Helispot	149	41° 18.557'	-123° 33.158'	Helispot	75	41° 40.300'	-123° 25.971'
Helispot	155	41° 25.672'	-123° 22.846'	Helispot	76	41° 40.027'	-123° 27.859'
Helispot	191	41° 45.834'	-123° 20.640'	Helispot	78	41° 43.810'	-123° 25.778'
Helispot	193	41° 45.433'	-123° 19.178'	Helispot	94	41° 38.475'	-123° 21.421'
Helispot	199	41° 47.324'	-123° 14.565'	Helispot	95	41° 38.661'	-123° 18.504'
Helispot	211	41° 41.563'	-123° 15.671'	Helispot	97	41° 39.745'	-123° 19.344'
Helispot	217	41° 39.512'	-123° 13.913'	Helispot	Happy Camp Helispot	41° 47.470'	-123° 23.141'

Transportation
McCash
 CA-SRF-000651
 October 5, 2021
 94,962 acres as of 9/30/2021, 1915 Hrs



- Air Operations
- Airstrip or Airport
- Check Point
- Dip Site
- Helispot
- Assignment Breaks
- Division Break
- Logistics
- Incident Command Post
- Drop Point
- Staging Area
- Repair
- Landing or Log Deck
- Hazard Tree
- Communications
- Mobile Weather Unit
- Internet Access
- Repeater

- Safety
- Hazard
- Water
- Water Source
- Restricted Water Source
- Secondary Highway
- Paved Roads
- Dirt (Not Paved)
- Gravel Road
- Unimproved Roads
- Closed Roads
- Runway
- Wildfire Daily Fire Perimeter
- Proclaimed FS Boundary
- Administrative FS Boundary
- Ranger District Boundary
- Federal Wilderness Boundary
- Other Designated Boundary

- County Boundary
- Transport Times
- 12 minutes
- 20 minutes
- 25 minutes
- 30 minutes
- 45 minutes

Mobile Maps

0 1 2 3 Miles