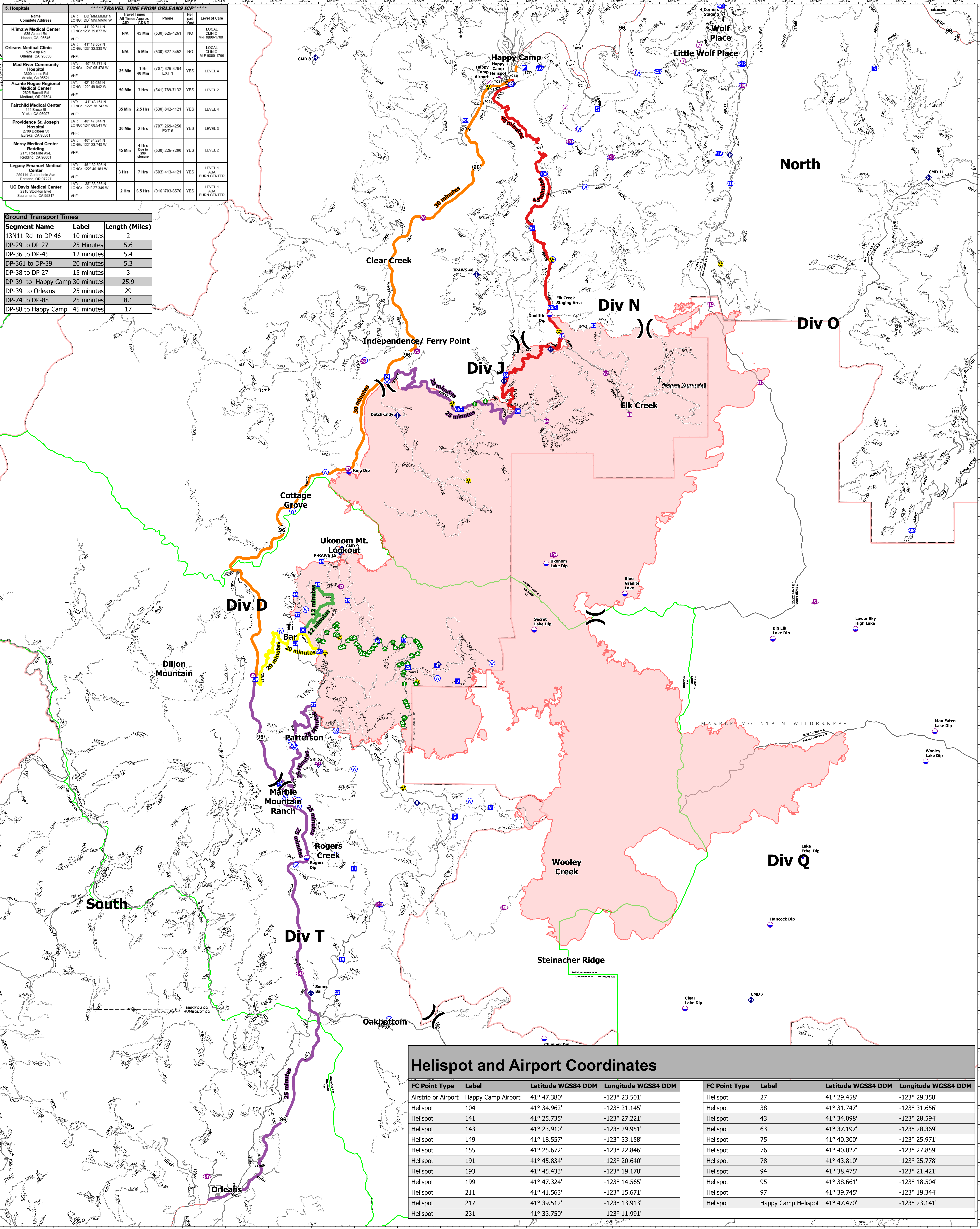


5. Hospitals

Name	Complete Address	LAT: DD MM MMM W	LONG: DD MM MMM W	Travel Time All Times Approx	Phone	Level of Care
K'ima W Medical Center	535 Airport Rd Hooda, CA 95548	41° 02.511' N	123° 39.877' W	N/A 45 Min	(530) 625-4261	LOCAL CLINIC M-F 0800-1700
Orleans Medical Clinic	525 Main Rd Orleans, CA 95556	41° 18.057' N	123° 32.838' W	N/A 5 Min	(530) 627-3452	LOCAL CLINIC M-F 0800-1700
Mad River Community Hospital	3800 Jones Rd Arcata, CA 95521	40° 53.771' N	124° 05.478' W	25 Min 1 Hr 40 Min	(707) 826-8264	EXT 5 LEVEL 4
Asante Rogue Regional Medical Center	2825 Barnett Rd Medford, OR 97504	42° 18.085' N	122° 49.842' W	50 Min 3 Hrs	(541) 789-7132	YES LEVEL 2
Fairchild Medical Center	44 Bruce St Yreka, CA 96097	41° 43.101' N	122° 38.742' W	35 Min 2.5 Hrs	(530) 842-4121	YES LEVEL 4
Providence St. Joseph Hospital	2700 Dobson St Redding, CA 96001	40° 47.664' N	122° 06.541' W	30 Min 2 Hrs	(707) 269-4250	EXT 6 YES LEVEL 3
Mercy Medical Center Redding	2175 Roseville Ave Redding, CA 96001	40° 34.294' N	122° 23.748' W	45 Min 4 Hrs Over to 2nd floor	(530) 225-7200	YES LEVEL 2
Legacy Emanuel Medical Center	2801 N. Carleton Ave Portland, OR 97227	46° 32.509' N	122° 40.181' W	3 Hrs 7 Hrs	(503) 413-4121	YES LEVEL 1 ABA BURN CENTER
UC Davis Medical Center	2315 Stockton Blvd Sacramento, CA 95817	38° 33.288' N	121° 27.349' W	2 Hrs 6.5 Hrs	(916) 703-6576	YES LEVEL 1 ABA BURN CENTER

Ground Transport Times

Segment Name	Label	Length (Miles)
13N11 Rd to DP 46	10 minutes	2
DP-29 to DP 27	25 Minutes	5.6
DP-36 to DP-45	12 minutes	5.4
DP-361 to DP-39	20 minutes	5.3
DP-38 to DP 27	15 minutes	3
DP-39 to Happy Camp	30 minutes	25.9
DP-39 to Orleans	25 minutes	29
DP-74 to DP-88	25 minutes	8.1
DP-88 to Happy Camp	45 minutes	17



Helispot and Airport Coordinates

FC Point Type	Label	Latitude WGS84 DDM	Longitude WGS84 DDM
Airstrip or Airport	Happy Camp Airport	41° 47.380'	-123° 23.501'
Helispot	104	41° 34.962'	-123° 21.145'
Helispot	141	41° 25.735'	-123° 27.221'
Helispot	143	41° 23.910'	-123° 29.951'
Helispot	149	41° 18.557'	-123° 33.158'
Helispot	155	41° 25.672'	-123° 22.846'
Helispot	191	41° 45.834'	-123° 20.640'
Helispot	193	41° 45.433'	-123° 19.178'
Helispot	199	41° 47.324'	-123° 14.565'
Helispot	211	41° 41.563'	-123° 15.671'
Helispot	217	41° 39.512'	-123° 13.913'
Helispot	231	41° 33.750'	-123° 11.991'

FC Point Type	Label	Latitude WGS84 DDM	Longitude WGS84 DDM
Helispot	27	41° 29.458'	-123° 29.358'
Helispot	38	41° 31.747'	-123° 31.656'
Helispot	43	41° 34.098'	-123° 28.594'
Helispot	63	41° 37.197'	-123° 28.369'
Helispot	75	41° 40.300'	-123° 25.971'
Helispot	76	41° 40.027'	-123° 27.859'
Helispot	78	41° 43.810'	-123° 25.778'
Helispot	94	41° 38.475'	-123° 21.421'
Helispot	95	41° 38.661'	-123° 18.504'
Helispot	97	41° 39.745'	-123° 19.344'
Helispot	Happy Camp Helispot	41° 47.470'	-123° 23.141'

Transportation
McCASH
 CA-SRF-000651
 October 13, 2021
 94,962 acres as of 9/30/2021, 1915 Hrs



- Air Operations**
 - Airstrip or Airport
 - Check Point
 - Dip Site
 - Helispot
 - Assignment Breaks
 - Division Break
- Logistics**
 - Incident Command Post
 - Drop Point
 - Staging Area
 - Repair
 - Landing or Log Deck
 - Hazard Tree
- Communications**
 - Mobile Weather Unit
 - Internet Access
 - Repeater
 - Safety
 - Hazard
 - Water
 - Water Source
- Other**
 - Restricted Water Source
 - Secondary Highway
 - Paved Roads
 - Dirt (Not Paved)
 - Gravel Road
 - Unimproved Roads
 - Closed Roads
 - Runway
- Boundaries**
 - Wildfire Daily Fire Perimeter
 - Proclaimed FS Boundary
 - Administrative FS Boundary
 - Ranger District Boundary
 - Federal Wilderness Boundary
 - Other Designated Boundary
 - County Boundary
- Transport Times**
 - Travel Time
 - 12 minutes
 - 20 minutes
 - 25 minutes
 - 30 minutes
 - 45 minutes

Mobile Maps

0 1 2 3 Miles

NAD 1983 UTM, Zone 10N
 AK, MET
 10/13/2021, 0022hrs