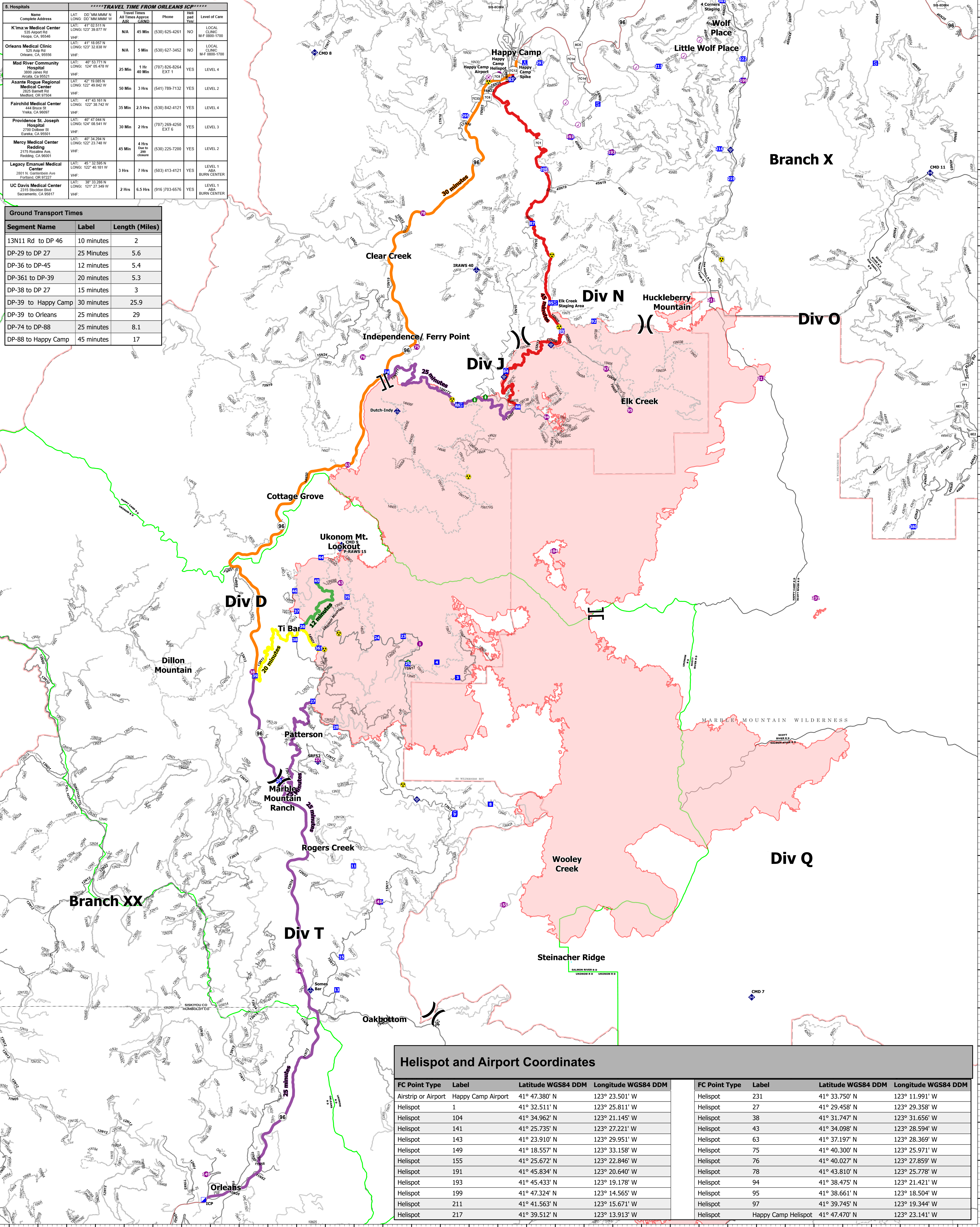


*****TRAVEL TIME FROM ORLEANS ICP*****							
6. Hospitals	Name	Complete Address	LAT: DD MM MMM W	LONG: DD MM MMM W	Travel Time All Times Approx	Phone	Level of Care
	K'ima'w Medical Center	535 Airport Rd Hoona, CA 99548	41° 02.511' N	123° 39.877' W	N/A	45 Min (530) 625-4261	NO LOCAL CLINIC M-F 0800-1700
	Orleans Medical Clinic	325 4th St Orleans, CA 99556	41° 18.657' N	123° 32.838' W	N/A	5 Min (530) 627-3452	NO LOCAL CLINIC M-F 0800-1700
	Mad River Community Hospital	3800 Jones Rd Arcata, CA 95521	40° 53.771' N	124° 05.478' W	25 Min	1 Hr 40 Min (707) 826-8264	YES LEVEL 4
	Asante Rogue Regional Medical Center	2825 Barnett Rd Medford, OR 97504	42° 18.885' N	122° 49.842' W	50 Min	3 Hrs (541) 789-7132	YES LEVEL 2
	Fairchild Medical Center	44 Bruce St Yreka, CA 99587	41° 43.101' N	122° 38.742' W	35 Min	2.5 Hrs (530) 842-4121	YES LEVEL 4
	Providence St. Joseph Hospital	2700 Dobson St Redding, CA 96001	40° 47.664' N	122° 06.541' W	30 Min	2 Hrs (707) 269-4250	YES LEVEL 3
	Mercy Medical Center Redding	2175 Roseville Ave Redding, CA 96001	40° 34.294' N	122° 23.748' W	45 Min	4 Hrs Over to 2nd floor (530) 225-7200	YES LEVEL 2
	Legacy Emanuel Medical Center	2801 N. Carlsbarren Ave Eugene, OR 97403	46° 32.595' N	122° 40.181' W	3 Hrs	7 Hrs (503) 413-4121	YES LEVEL 1 ABA BURN CENTER
	UC Davis Medical Center	2315 Stockton Blvd Sacramento, CA 95817	38° 33.288' N	121° 27.349' W	2 Hrs	6.5 Hrs (916) 703-6576	YES LEVEL 1 ABA BURN CENTER

Ground Transport Times		
Segment Name	Label	Length (Miles)
13N11 Rd to DP 46	10 minutes	2
DP-29 to DP 27	25 Minutes	5.6
DP-36 to DP-45	12 minutes	5.4
DP-361 to DP-39	20 minutes	5.3
DP-38 to DP 27	15 minutes	3
DP-39 to Happy Camp	30 minutes	25.9
DP-39 to Orleans	25 minutes	29
DP-74 to DP-88	25 minutes	8.1
DP-88 to Happy Camp	45 minutes	17



### Helispot and Airport Coordinates

FC Point Type	Label	Latitude WGS84 DDM	Longitude WGS84 DDM	FC Point Type	Label	Latitude WGS84 DDM	Longitude WGS84 DDM
Airstrip or Airport	Happy Camp Airport	41° 47.380' N	123° 23.501' W	Helispot	231	41° 33.750' N	123° 11.991' W
Helispot	1	41° 32.511' N	123° 25.811' W	Helispot	27	41° 29.458' N	123° 29.358' W
Helispot	104	41° 34.962' N	123° 21.145' W	Helispot	38	41° 31.747' N	123° 31.656' W
Helispot	141	41° 25.735' N	123° 27.221' W	Helispot	43	41° 34.098' N	123° 28.594' W
Helispot	143	41° 23.910' N	123° 29.951' W	Helispot	63	41° 37.197' N	123° 28.369' W
Helispot	149	41° 18.557' N	123° 33.158' W	Helispot	75	41° 40.300' N	123° 25.971' W
Helispot	155	41° 25.672' N	123° 22.846' W	Helispot	76	41° 40.027' N	123° 27.859' W
Helispot	191	41° 45.834' N	123° 20.640' W	Helispot	78	41° 43.810' N	123° 25.778' W
Helispot	193	41° 45.433' N	123° 19.178' W	Helispot	94	41° 38.475' N	123° 21.421' W
Helispot	199	41° 47.324' N	123° 14.565' W	Helispot	95	41° 38.661' N	123° 18.504' W
Helispot	211	41° 41.563' N	123° 15.671' W	Helispot	97	41° 39.745' N	123° 19.344' W
Helispot	217	41° 39.512' N	123° 13.913' W	Helispot	Happy Camp Helispot	41° 47.470' N	123° 23.141' W

**Medical Ground Transportation**  
**McCash**  
 CA-SRF-000651  
 Oct 2, 2021  
 93,514 acres as of 9/30/2021, 1915 Hrs



- ✈ Airstrip or Airport
- 📍 Camp
- ⚠ Hazard
- Secondary Highway
- 📍 Check Point
- 📍 Staging Area
- 🚧 Travel Time
- Paved Roads
- 🔴 Wildfire Daily Fire Perimeter
- 📍 Helispot
- 📍 Landing or Log Deck
- 🟢 12 minutes
- Dirt (Not Paved)
- 🟢 Proclaimed FS Boundary
- ✂ Division Break
- 📍 Hazard Tree
- 🟡 20 minutes
- Gravel Road
- 🟢 Administrative FS Boundary
- ⚡ Branch Break
- 📍 Mobile Weather Unit
- 🟠 25 minutes
- Unimproved Roads
- 🟢 Ranger District Boundary
- 📍 Incident Command Post
- 📍 Internet Access
- 🟠 30 minutes
- Closed Roads
- 🟢 Other Designated Boundary
- 📍 Drop Point
- 📍 Repeater
- 🔴 45 minutes
- Runway
- 🟢 County Boundary
- 🔴 Federal Wilderness Boundary

0 1 2 3 Miles

NAD 1983 UTM Zone 10N  
 AK MET  
 10/1/2021, 2:11 PM