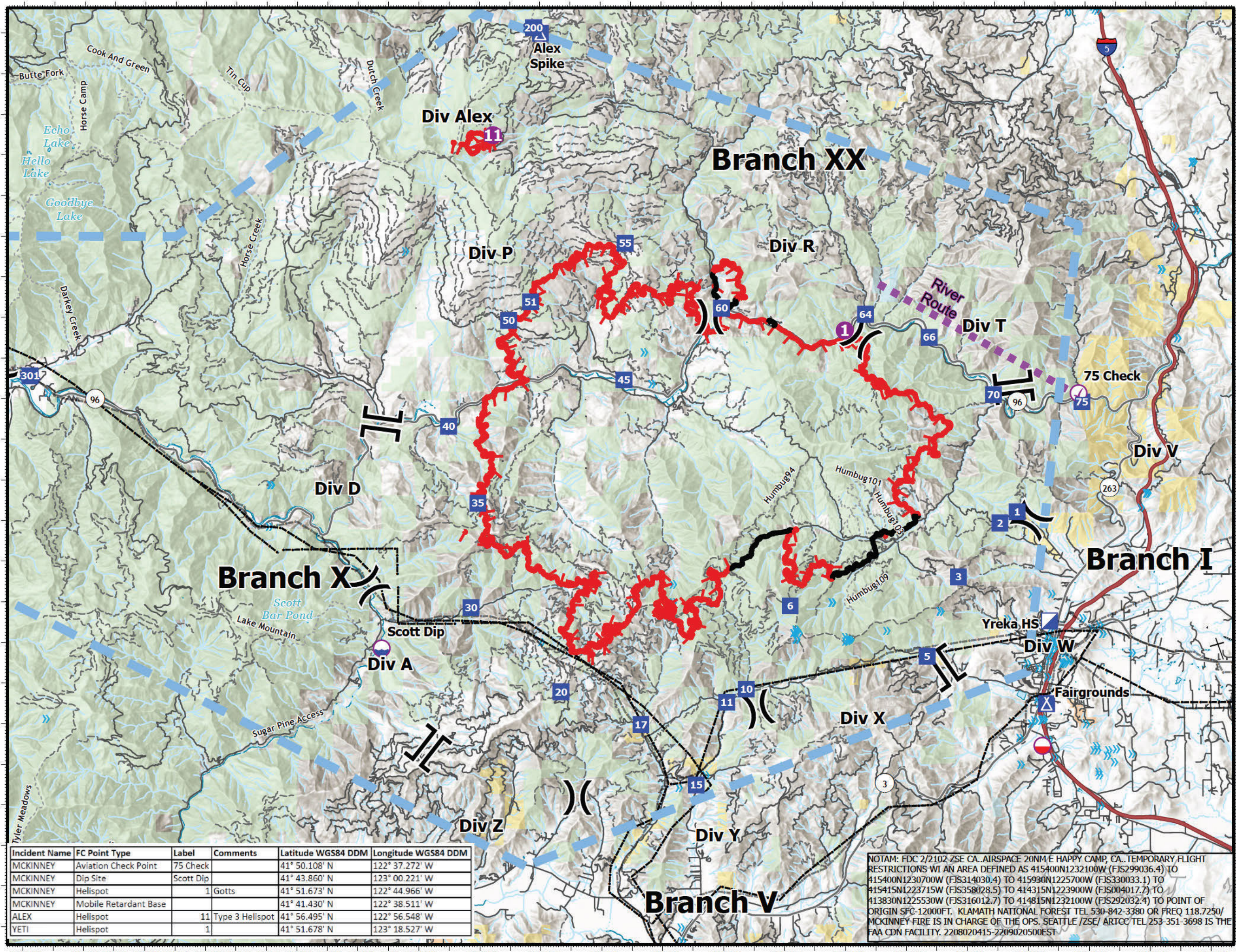


# Pilot Map McKinney Fire CA-KNF-006177

August 4, 2022  
57,475 acres at 8/2/22 at 22:39

- Aviation Check Point
- Dip Site
- Mobile Retardant Base
- Helispot
- Division Break
- Branch Break
- Incident Command Post
- Drop Point
- Camp
- Contained
- Uncontained
- Aviation Route
- Temporary Flight Restriction
- Powerline
- Bridge/Ovepass/Viaduct
- Military Training Route
- Telephone Line/Telegraph Line
- Power Transmission Line
- Power Transmission Line
- Tower
- Bureau of Indian Affairs (BIA)
- Bureau of Land Management (BLM)
- State
- US Forest Service (USFS)



Incident Name	FC Point Type	Label	Comments	Latitude WGS84 DDM	Longitude WGS84 DDM
MCKINNEY	Aviation Check Point	75 Check		41° 50.108' N	122° 37.272' W
MCKINNEY	Dip Site	Scott Dip		41° 43.860' N	123° 00.221' W
MCKINNEY	Helispot	1	Gotts	41° 51.673' N	122° 44.966' W
MCKINNEY	Mobile Retardant Base			41° 41.430' N	122° 38.511' W
ALEX	Helispot	11	Type 3 Helispot	41° 56.495' N	122° 56.548' W
YETI	Helispot	1		41° 51.678' N	123° 18.527' W

NOTAM: FDC 2/2102 ZSE CA..AIRSPACE 20NM E HAPPY CAMP, CA..TEMPORARY FLIGHT RESTRICTIONS WI AN AREA DEFINED AS 415400N1232100W (FJS299036.4) TO 415400N1230700W (FJS314030.4) TO 415930N1225700W (FJS330033.1) TO 415415N1223715W (FJS358028.5) TO 414315N1223900W (FJS004017.7) TO 413830N1225530W (FJS316012.7) TO 414815N1232100W (FJS292032.4) TO POINT OF ORIGIN SFC-12000FT. KLAMATH NATIONAL FOREST TEL 530-842-3380 OR FREQ 118.7250/ MCKINNEY FIRE IS IN CHARGE OF THE OPS. SEATTLE /ZSE/ ARTCC/ TEL 253-351-3698 IS THE FAA CDN FACILITY. 2208020415-2209020500EST

