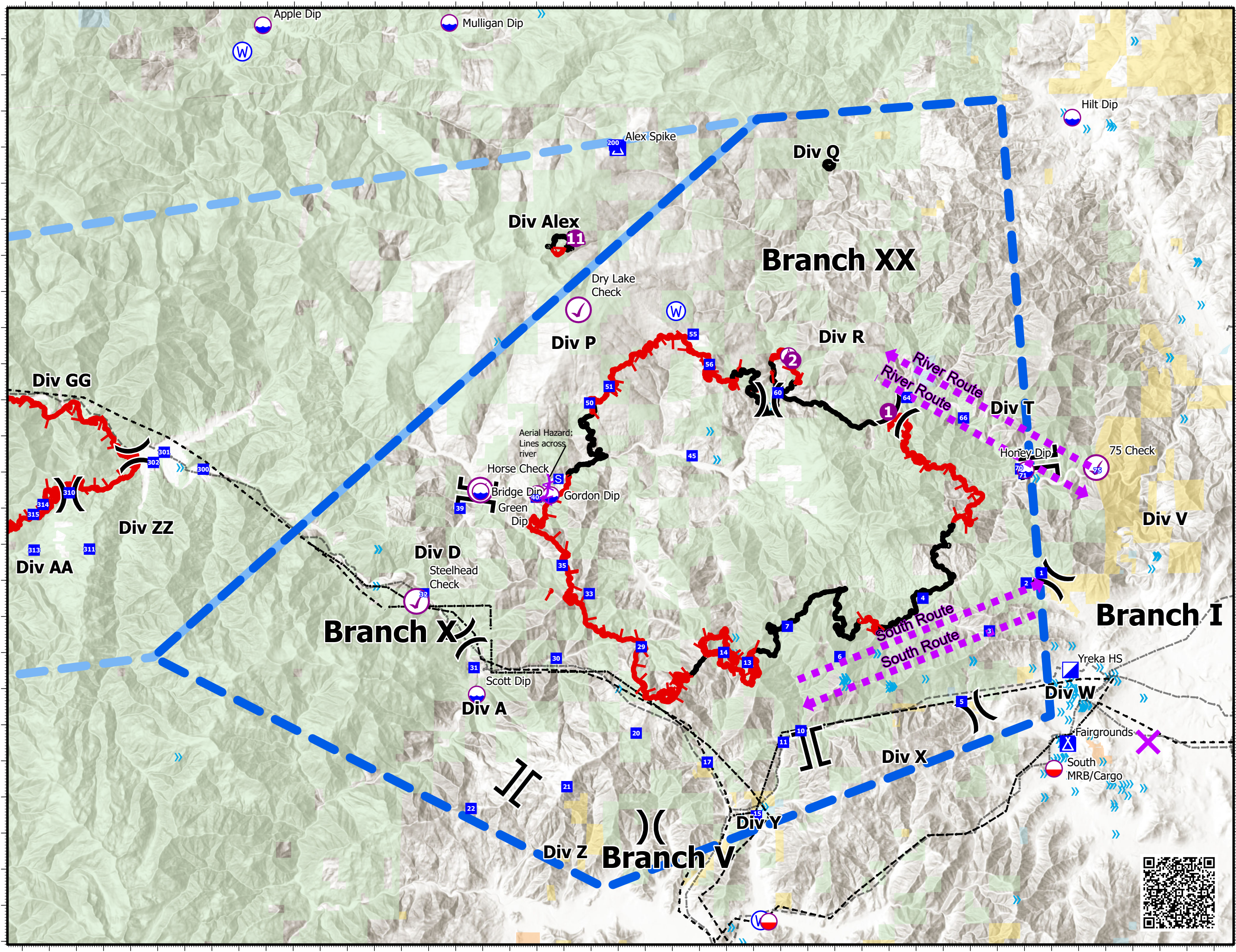


# Pilot Map

## McKinney Fire

### CA-KNF-006177

August 7, 2022  
60,078 acres at 8/5/22 at 21:00



- Aviation Check Point
  - Dip Site
  - Mobile Retardant Base
  - Helispot
  - Sling Site
  - Division Break
  - Branch Break
  - Incident Command Post
  - Drop Point
  - Camp
  - Staging Area
  - Water Source
  - Intersection Points
  - Aerial Hazard
  - Aviation Route
  - TFR:2/4959
  - TFR:2/4960
  - Contained
  - Uncontained
  - Powerline
  - Bridge/Ovepass/Viaduct
  - Military Training Route
  - Telephone Line/Telegraph Line
  - Power Transmission Line
  - Power Transmission Line
  - Tower
  - Bureau of Indian Affairs (BIA)
  - Bureau of Land Management (BLM)
  - State
  - US Forest Service (USFS)
- Kilometers  
0 2.5 5
- Miles  
0 2.5 5

1:180,000  
Datum: North American 1983



<b>IncidentName</b>	<b>FeatureCategory</b>	<b>Label</b>	<b>LatWGS84_DDM</b>	<b>LongWGS84_DDM</b>
YETI	Helispot	1	+41° 51.67788967'	-123° 18.52743443'
ALEX	Helispot	11	+41° 56.49531285'	-122° 56.54883201'
MCKINNEY	Aviation Check Point	75 Check	41° 50.108' N	122° 37.272' W
MCKINNEY	Helispot	1	41° 51.673' N	122° 44.966' W
MCKINNEY	Dip Site	Scott Dip	41° 43.860' N	123° 00.221' W
MCKINNEY	Helispot	2	41° 53.107' N	122° 48.513' W
MCKINNEY	Dip Site	Hilt Dip	41° 59.802' N	122° 38.106' W
MCKINNEY	Dip Site	Mulligan Dip	42° 02.460' N	123° 01.241' W
MCKINNEY	Dip Site	Apple Dip	42° 02.390' N	123° 08.171' W
MCKINNEY	Aviation Check Point	Steelhead Check	41° 46.440' N	123° 02.451' W
MCKINNEY	Aviation Check Point	Horse Check	41° 49.520' N	123° 00.091' W
MCKINNEY	Dip Site	Green Dip	41° 49.410' N	122° 57.980' W
MCKINNEY	Dip Site	Bridge Dip	41° 49.480' N	123° 00.080' W
MCKINNEY	Dip Site	Gordon Dip	41° 49.380' N	122° 57.480' W
MCKINNEY	Dip Site	Honey Dip	41° 50.043' N	122° 39.884' W
MCKINNEY	Mobile Retardant Base	South MRB/Cargo		
MCKINNEY	Aviation Check Point	Dry Lake Check		
MCKINNEY	Sling Site			
MCKINNEY	Mobile Retardant Base			