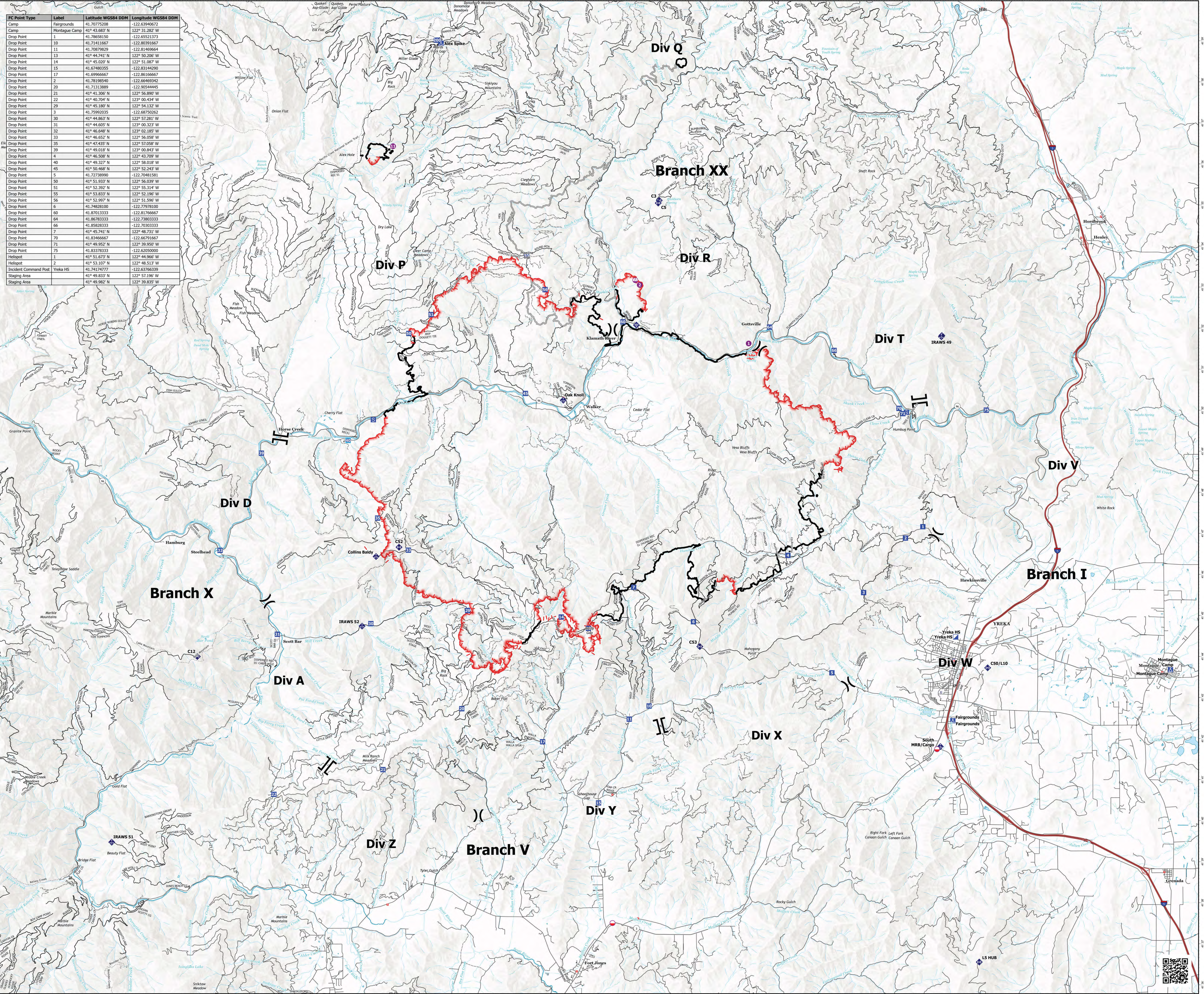


FC Point Type	Label	Latitude WGS84 DDM	Longitude WGS84 DDM
Camp	Fairgrounds	41.7075208	-122.63940672
Camp	Montague Camp	41° 43.683' N	122° 31.282' W
Drop Point	1	41.78658150	-122.65521373
Drop Point	10	41.7141667	-122.82091667
Drop Point	11	41.70879829	-122.81466664
Drop Point	13	41° 44.741' N	122° 50.206' W
Drop Point	14	41° 45.020' N	122° 51.087' W
Drop Point	15	41.67480355	-122.83144290
Drop Point	17	41.69966667	-122.86166667
Drop Point	2	41.7018940	-122.64669242
Drop Point	20	41.71313889	-122.90544445
Drop Point	21	41° 41.306' N	122° 56.890' W
Drop Point	22	41° 40.704' N	122° 00.434' W
Drop Point	29	41° 45.180' N	122° 54.132' W
Drop Point	3	41.75992035	-122.68750262
Drop Point	30	41° 44.363' N	122° 52.281' W
Drop Point	31	41° 44.605' N	122° 00.323' W
Drop Point	32	41° 46.648' N	122° 02.185' W
Drop Point	33	41° 46.652' N	122° 56.058' W
Drop Point	35	41° 47.435' N	122° 57.058' W
Drop Point	39	41° 49.816' N	122° 00.845' W
Drop Point	4	41° 46.528' N	122° 43.729' W
Drop Point	40	41° 49.527' N	122° 58.018' W
Drop Point	45	41° 50.468' N	122° 52.243' W
Drop Point	5	41.72738990	-122.70481581
Drop Point	50	41° 51.933' N	122° 56.039' W
Drop Point	51	41° 52.392' N	122° 55.314' W
Drop Point	55	41° 53.833' N	122° 52.196' W
Drop Point	56	41° 52.997' N	122° 51.596' W
Drop Point	6	41.74828100	-122.77978100
Drop Point	60	41.87013333	-122.81766667
Drop Point	64	41.86783333	-122.73803333
Drop Point	66	41.85623333	-122.70033333
Drop Point	7	41° 45.741' N	122° 48.731' W
Drop Point	70	41.83466667	-122.66791667
Drop Point	71	41° 49.952' N	122° 39.950' W
Drop Point	75	41.83378333	-122.62050000
Helispot	1	41° 51.673' N	122° 44.966' W
Helispot	2	41° 53.107' N	122° 48.513' W
Incident Command Post	Yreka HS	41.74174777	-122.63766339
Staging Area		41° 49.833' N	122° 57.196' W
Staging Area		41° 49.982' N	122° 39.835' W



- Mobile Retardant Base
 - Helispot
 - Sling Site
 - X Division Break
 - II Branch Break
 - II Incident Command Post
 - Drop Point
 - Camp
 - Staging Area
 - ◆ Mobile Weather Unit
 - ◆ Internet Access
 - ◆ Repeater
 - Contained
 - Uncontained
 - Access or Improved Road
- Transportation
- Expressway
 - Local Connector
 - Local Road
 - Ramp
 - 4WD
- Motor Vehicle Use Map: Roads
- Roads open to all Vehicles, Yearlong
 - Roads open to all Vehicles, Seasonal
 - Roads open to hwy legal vehicles only, Yearlong
 - Roads open to hwy legal vehicles only, Seasonal
 - Trails

↑

Kilometers 1.75 3.5
Miles 1.75 3.5

1:50,000

Datum: North American 1983