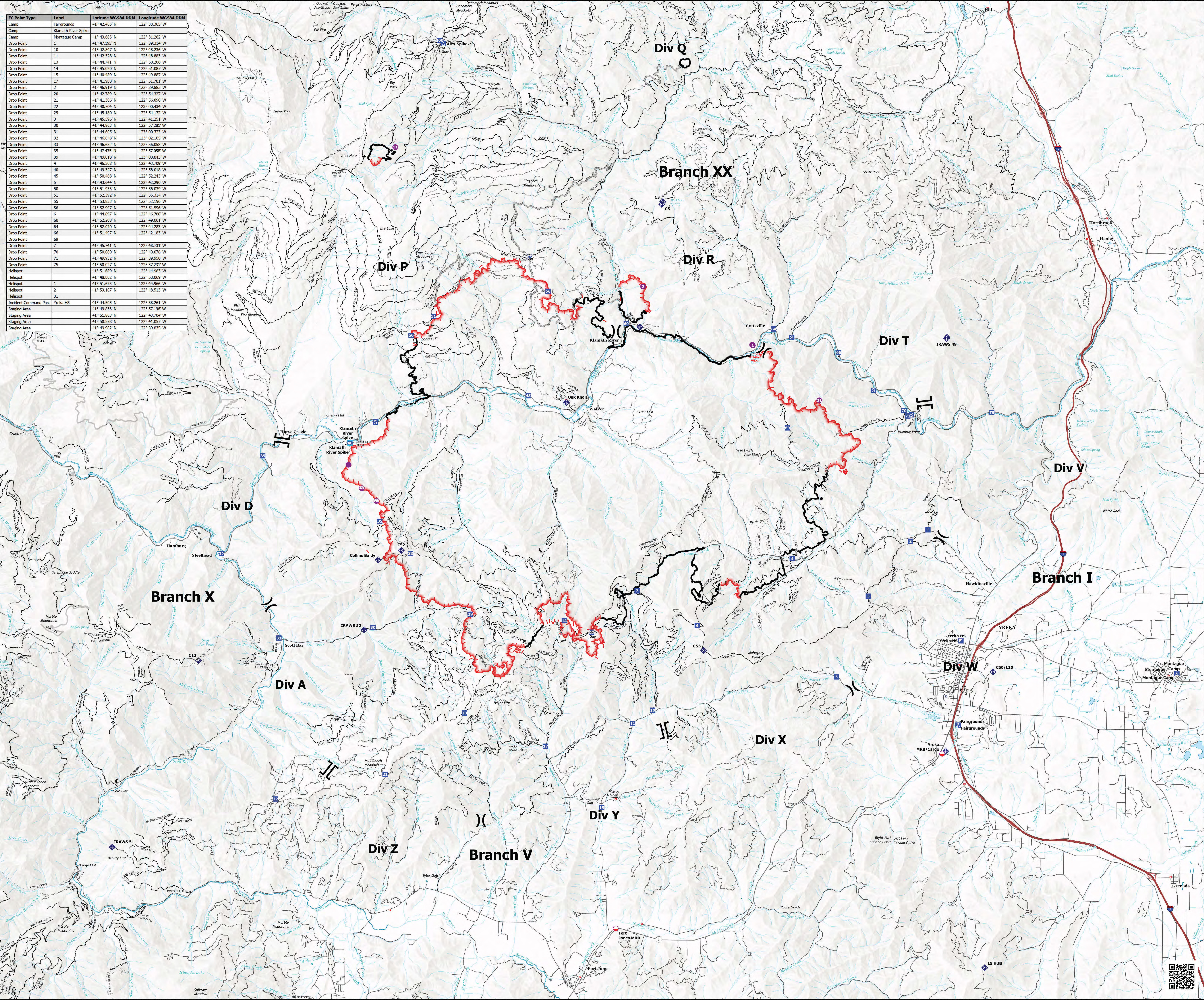


FC Point Type	Label	Latitude WGS84 DDM	Longitude WGS84 DDM
Camp	Fairgrounds	41° 42.465' N	122° 38.365' W
Camp	Klamath River Spike		
Camp	Montague Camp	41° 43.683' N	122° 31.282' W
Drop Point	1	41° 42.847' N	122° 39.314' W
Drop Point	10	41° 42.847' N	122° 48.236' W
Drop Point	11	41° 42.528' N	122° 48.883' W
Drop Point	13	41° 44.741' N	122° 50.206' W
Drop Point	14	41° 45.020' N	122° 51.087' W
Drop Point	15	41° 46.289' N	122° 49.887' W
Drop Point	17	41° 41.980' N	122° 51.291' W
Drop Point	2	41° 46.919' N	122° 39.882' W
Drop Point	20	41° 42.789' N	122° 54.327' W
Drop Point	21	41° 41.306' N	122° 56.890' W
Drop Point	22	41° 40.704' N	122° 00.434' W
Drop Point	29	41° 45.180' N	122° 54.132' W
Drop Point	3	41° 45.596' N	122° 41.251' W
Drop Point	30	41° 44.863' N	122° 57.281' W
Drop Point	31	41° 44.605' N	123° 00.323' W
Drop Point	32	41° 46.648' N	123° 02.185' W
Drop Point	33	41° 46.652' N	122° 56.058' W
Drop Point	35	41° 47.435' N	122° 57.056' W
Drop Point	39	41° 49.018' N	122° 00.843' W
Drop Point	4	41° 46.508' N	122° 43.709' W
Drop Point	40	41° 49.327' N	122° 58.018' W
Drop Point	45	41° 50.468' N	122° 52.243' W
Drop Point	5	41° 43.644' N	122° 42.290' W
Drop Point	50	41° 51.933' N	122° 56.036' W
Drop Point	51	41° 52.392' N	122° 55.314' W
Drop Point	55	41° 53.833' N	122° 52.196' W
Drop Point	56	41° 52.997' N	122° 51.596' W
Drop Point	6	41° 44.897' N	122° 46.788' W
Drop Point	60	41° 52.208' N	122° 49.061' W
Drop Point	64	41° 52.070' N	122° 44.283' W
Drop Point	66	41° 51.497' N	122° 42.183' W
Drop Point	69		
Drop Point	7	41° 45.741' N	122° 48.731' W
Drop Point	70	41° 50.080' N	122° 40.076' W
Drop Point	71	41° 49.952' N	122° 39.950' W
Drop Point	75	41° 50.027' N	122° 37.231' W
Drop Point	81	41° 51.689' N	122° 44.983' W
Hellspot		41° 48.802' N	122° 58.069' W
Hellspot	1	41° 51.673' N	122° 44.966' W
Hellspot	2	41° 53.107' N	122° 48.513' W
Hellspot	31		
Incident Command Post	Yreka HS	41° 44.505' N	122° 38.261' W
Staging Area		41° 49.833' N	122° 57.196' W
Staging Area		41° 51.863' N	122° 43.704' W
Staging Area		41° 50.578' N	122° 41.057' W
Staging Area		41° 49.982' N	122° 39.835' W



- Mobile Retardant Base
 - Helispot
 - Sling Site
 - X Division Break
 - II Branch Break
 - II Incident Command Post
 - Drop Point
 - Camp
 - Staging Area
 - ◆ Mobile Weather Unit
 - ◆ Internet Access
 - ◆ Repeater
 - Contained
 - Uncontained
 - Access or Improved Road
- Transportation
- Expressway
 - Local Connector
 - Local Road
 - Ramp
 - 4WD
- Motor Vehicle Use Map: Roads
- Roads open to all Vehicles, Yearlong
 - Roads open to all Vehicles, Seasonal
 - Roads open to hwy legal vehicles only, Yearlong
 - Roads open to hwy legal vehicles only, Seasonal
 - Trails

0 1.75 3.5 3.5
 Kilometers
 Miles

1:50,000

Datum: North American 1983