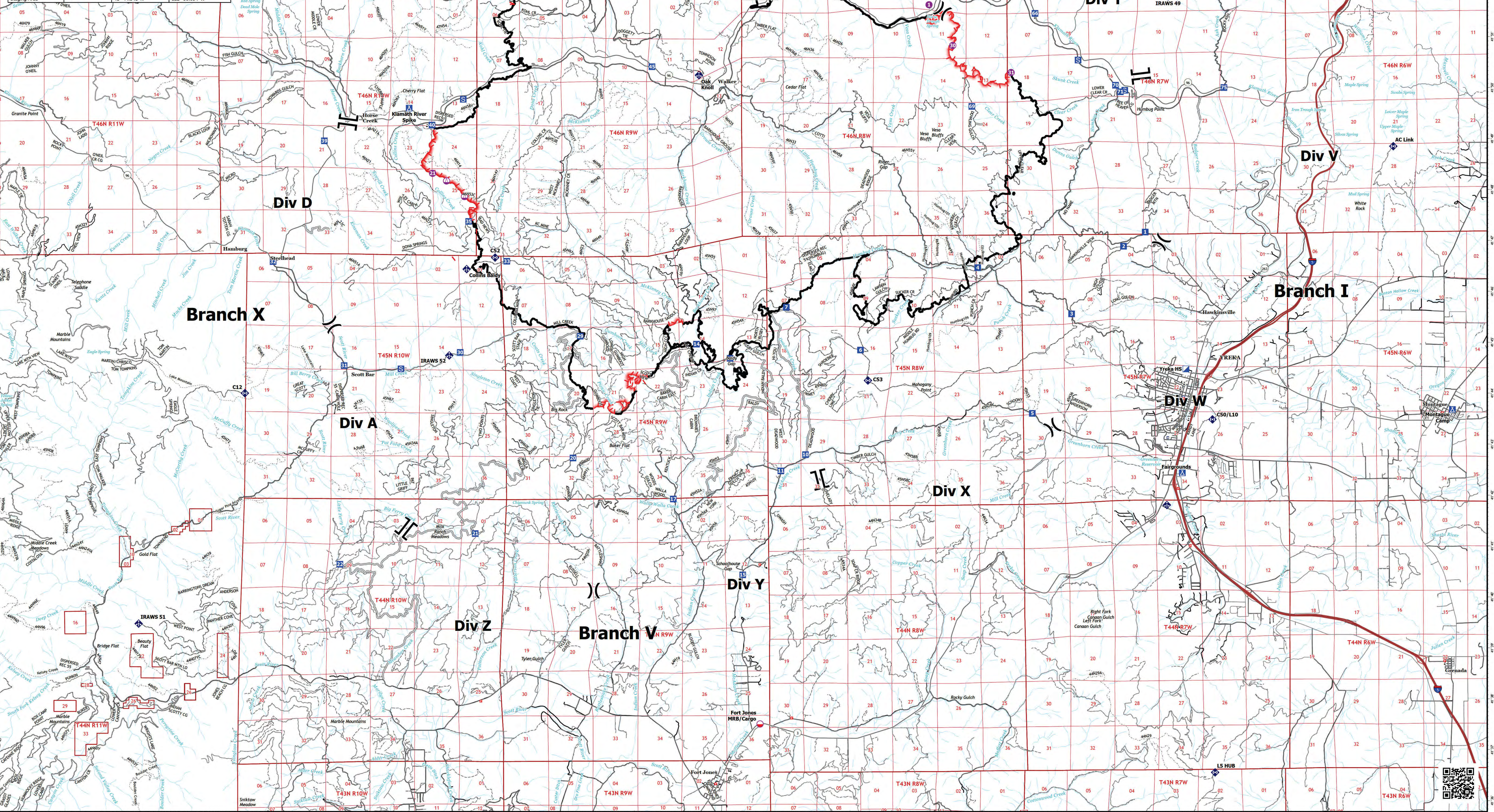


| FC Point Type | Label | Latitude WGS84 DDM | Longitude WGS84 DDM |
|-----------------------|---------------------|--------------------|---------------------|
| Camp | Fairgrounds | 41° 42.465' N | 122° 38.365' W |
| Camp | Klamath River Spike | 41° 49.659' N | 122° 58.617' W |
| Camp | Montague Camp | 41° 43.683' N | 122° 31.282' W |
| Drop Point | 1 | 41° 42.817' N | 122° 39.314' W |
| Drop Point | 11 | 41° 42.528' N | 122° 48.883' W |
| Drop Point | 13 | 41° 44.741' N | 122° 50.206' W |
| Drop Point | 14 | 41° 45.020' N | 122° 51.087' W |
| Drop Point | 15 | 41° 46.089' N | 122° 49.887' W |
| Drop Point | 17 | 41° 41.980' N | 122° 51.291' W |
| Drop Point | 2 | 41° 46.919' N | 122° 39.882' W |
| Drop Point | 20 | 41° 42.789' N | 122° 54.327' W |
| Drop Point | 21 | 41° 41.306' N | 122° 56.890' W |
| Drop Point | 22 | 41° 40.704' N | 122° 00.434' W |
| Drop Point | 29 | 41° 45.180' N | 122° 54.132' W |
| Drop Point | 3 | 41° 45.596' N | 122° 41.251' W |
| Drop Point | 30 | 41° 44.863' N | 122° 57.281' W |
| Drop Point | 31 | 41° 44.605' N | 122° 00.323' W |
| Drop Point | 32 | 41° 46.648' N | 122° 02.185' W |
| Drop Point | 33 | 41° 46.652' N | 122° 56.058' W |
| Drop Point | 35 | 41° 47.833' N | 122° 57.058' W |
| Drop Point | 39 | 41° 49.018' N | 122° 00.843' W |
| Drop Point | 4 | 41° 46.508' N | 122° 43.709' W |
| Drop Point | 40 | 41° 49.327' N | 122° 58.018' W |
| Drop Point | 45 | 41° 50.468' N | 122° 52.243' W |
| Drop Point | 5 | 41° 43.644' N | 122° 42.290' W |
| Drop Point | 50 | 41° 47.933' N | 122° 56.039' W |
| Drop Point | 51 | 41° 52.392' N | 122° 55.314' W |
| Drop Point | 55 | 41° 53.833' N | 122° 52.190' W |
| Drop Point | 56 | 41° 52.997' N | 122° 51.596' W |
| Drop Point | 6 | 41° 44.897' N | 122° 46.788' W |
| Drop Point | 60 | 41° 52.208' N | 122° 49.061' W |
| Drop Point | 64 | 41° 50.270' N | 122° 44.283' W |
| Drop Point | 65 | 41° 51.497' N | 122° 42.183' W |
| Drop Point | 69 | 41° 49.675' N | 122° 43.849' W |
| Drop Point | 7 | 41° 45.741' N | 122° 48.731' W |
| Drop Point | 70 | 41° 50.080' N | 122° 40.075' W |
| Drop Point | 71 | 41° 49.952' N | 122° 39.950' W |
| Drop Point | 75 | 41° 50.027' N | 122° 37.231' W |
| Drop Point | 76 | 41° 51.673' N | 122° 44.965' W |
| Helispot | 2 | 41° 53.107' N | 122° 48.513' W |
| Helispot | 21 | 41° 48.380' N | 122° 58.002' W |
| Helispot | 30 | 41° 50.338' N | 122° 42.816' W |
| Incident Command Post | Yreka HS | 41° 44.505' N | 122° 38.261' W |
| Staging Area | Yreka HS | 41° 49.833' N | 122° 57.196' W |
| Staging Area | | 41° 49.982' N | 122° 39.835' W |
| Staging Area | | 41° 50.578' N | 122° 41.057' W |
| Staging Area | | 41° 51.863' N | 122° 43.704' W |
| Staging Area | | 41° 51.856' N | 122° 43.704' W |
| Staging Area | | 41° 44.541' N | 122° 58.834' W |



- Mobile Retardant Base
 - Helispot
 - Sling Site
 - ✕ Division Break
 - || Branch Break
 - Incident Command Post
 - Drop Point
 - Camp
 - Staging Area
 - ◆ Mobile Weather Unit
 - ◆ Internet Access
 - ◆ Repeater
 - Contained
 - Uncontained
 - Access or Improved Road
- Transportation
- Expressway
 - Local Connector
 - Local Road
 - Ramp
 - 4WD
- Motor Vehicle Use Map: Roads
- Roads open to all Vehicles, Yearlong
 - Roads open to all Vehicles, Seasonal
 - Roads open to hwy legal vehicles only, Yearlong
 - Roads open to hwy legal vehicles only, Seasonal
- PBS Transportation Lines
- Road - Closed
 - Road - Light Duty - Dirt
 - Road - Light Duty - Gravel
 - Road - Light Duty - Paved
 - Road - Light Duty - Unspecified Composition
 - Road - Unimproved
 - Trails

↑

0 1.75 3.5
 Kilometers

0 1.75 3.5
 Miles

1:50,000

Datum: North American 1983