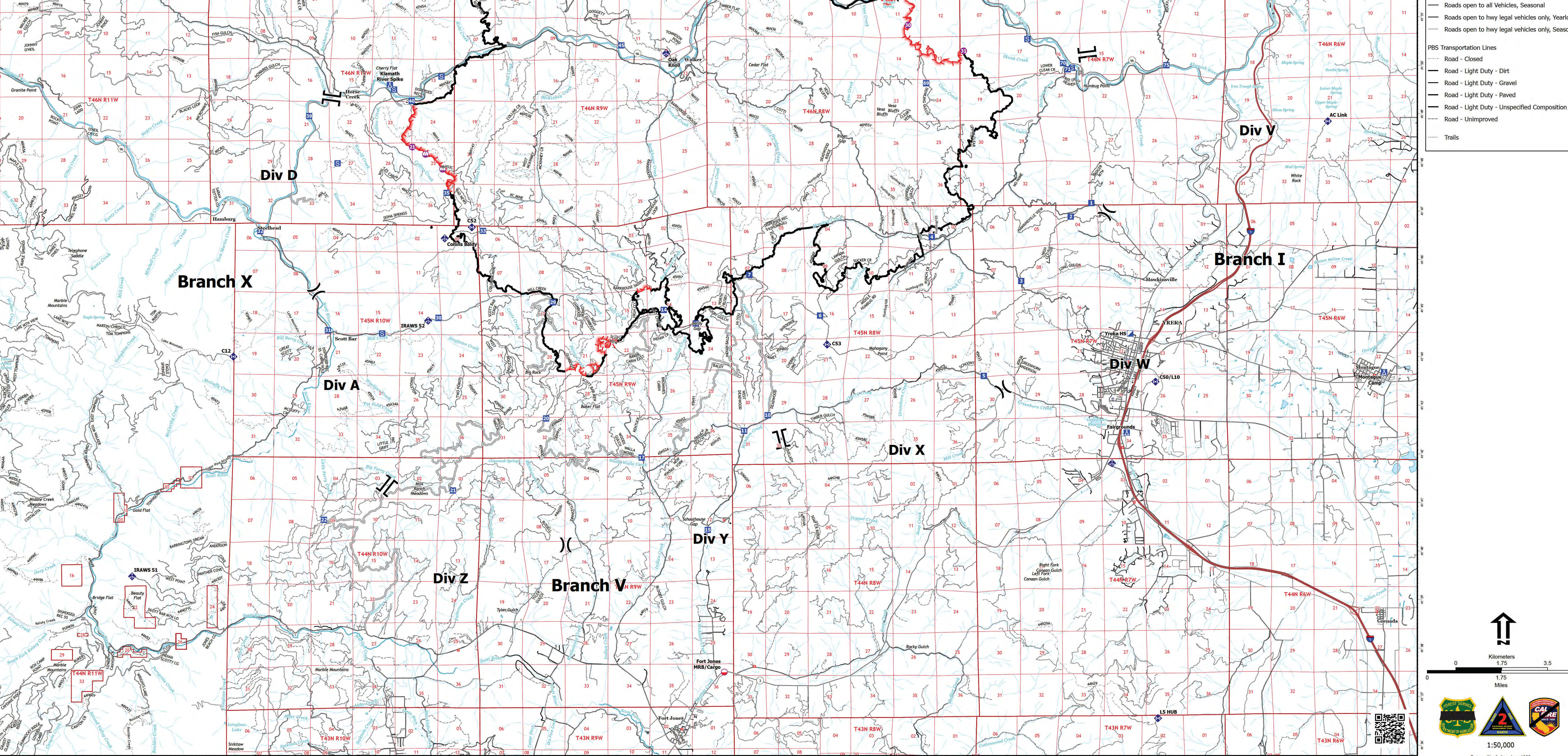


Transportation Map
McKinney Fire
CA-KNF-006177

August 12, 2022
 60,392 acres on 8/10/22 at
 22:20

FC Point Type	Label	Latitude WGS84 DDM	Longitude WGS84 DDM
Camp	Fairgrounds	41° 42.465' N	122° 38.365' W
Camp	Klamath River Spike	41° 49.659' N	122° 58.617' W
Camp	Montague Camp	41° 43.683' N	122° 31.282' W
Drop Point	1	41° 42.847' N	122° 39.314' W
Drop Point	11	41° 42.528' N	122° 48.883' W
Drop Point	13	41° 44.741' N	122° 50.206' W
Drop Point	14	41° 45.020' N	122° 51.087' W
Drop Point	15	41° 40.289' N	122° 49.887' W
Drop Point	17	41° 41.980' N	122° 51.291' W
Drop Point	2	41° 46.919' N	122° 39.882' W
Drop Point	20	41° 42.789' N	122° 54.327' W
Drop Point	21	41° 41.306' N	122° 56.890' W
Drop Point	22	41° 40.704' N	122° 50.434' W
Drop Point	29	41° 45.950' N	122° 54.123' W
Drop Point	3	41° 45.596' N	122° 41.251' W
Drop Point	30	41° 44.863' N	122° 57.281' W
Drop Point	31	41° 44.605' N	122° 00.323' W
Drop Point	32	41° 46.648' N	122° 02.185' W
Drop Point	33	41° 46.652' N	122° 56.058' W
Drop Point	35	41° 47.853' N	122° 57.058' W
Drop Point	39	41° 49.031' N	122° 00.843' W
Drop Point	4	41° 46.508' N	122° 43.709' W
Drop Point	40	41° 49.327' N	122° 58.018' W
Drop Point	45	41° 50.468' N	122° 52.243' W
Drop Point	5	41° 43.644' N	122° 42.290' W
Drop Point	50	41° 47.853' N	122° 57.058' W
Drop Point	51	41° 52.392' N	122° 55.314' W
Drop Point	55	41° 53.833' N	122° 52.190' W
Drop Point	56	41° 52.997' N	122° 51.596' W
Drop Point	6	41° 44.897' N	122° 46.788' W
Drop Point	60	41° 52.208' N	122° 49.061' W
Drop Point	64	41° 50.027' N	122° 44.283' W
Drop Point	66	41° 51.497' N	122° 42.183' W
Drop Point	69	41° 49.675' N	122° 43.849' W
Drop Point	7	41° 45.741' N	122° 48.731' W
Drop Point	70	41° 50.080' N	122° 40.075' W
Drop Point	71	41° 49.952' N	122° 39.950' W
Drop Point	75	41° 50.027' N	122° 37.231' W
Drop Point	75	41° 51.672' N	122° 44.966' W
Helispot	2	41° 53.107' N	122° 48.513' W
Helispot	21	41° 48.380' N	122° 58.002' W
Helispot	30	41° 50.872' N	122° 44.346' W
Helispot	31	41° 50.338' N	122° 42.816' W
Incident Command Post	Yreka HS	41° 49.833' N	122° 38.261' W
Staging Area	1	41° 49.833' N	122° 57.196' W
Staging Area	41	41° 49.982' N	122° 39.835' W
Staging Area	41	41° 50.578' N	122° 41.057' W
Staging Area	41	41° 51.863' N	122° 43.704' W
Staging Area	50	41° 51.856' N	122° 43.704' W
Staging Area	50	41° 44.541' N	122° 58.834' W
Staging Area	41	41° 48.045' N	122° 00.057' W
Staging Area	41	41° 49.562' N	122° 58.503' W



- Mobile Retardant Base
 - Helispot
 - Staging Area
 - ⊗ Division Break
 - ⊗ Branch Break
 - ⊗ Incident Command Post
 - Drop Point
 - Camp
 - Staging Area
 - ◆ Mobile Weather Unit
 - ◆ Internet Access
 - ◆ Repeater
 - Contained
 - Uncontained
 - Access or Improved Road
- Transportation**
- Expressway
 - Local Connector
 - Local Road
 - Ramp
 - 4WD
- Motor Vehicle Use Map: Roads**
- Roads open to all Vehicles, Yearlong
 - Roads open to all Vehicles, Seasonal
 - Roads open to hwy legal vehicles only, Yearlong
 - Roads open to hwy legal vehicles only, Seasonal
- PBS Transportation Lines**
- Road - Closed
 - Road - Light Duty - Dirt
 - Road - Light Duty - Gravel
 - Road - Light Duty - Paved
 - Road - Light Duty - Unspecified Composition
 - Road - Unimproved
 - Trails

0 1.75 3.5 3.5 Miles

0 1.75 3.5 Kilometers

1:50,000

Datum: North American 1983