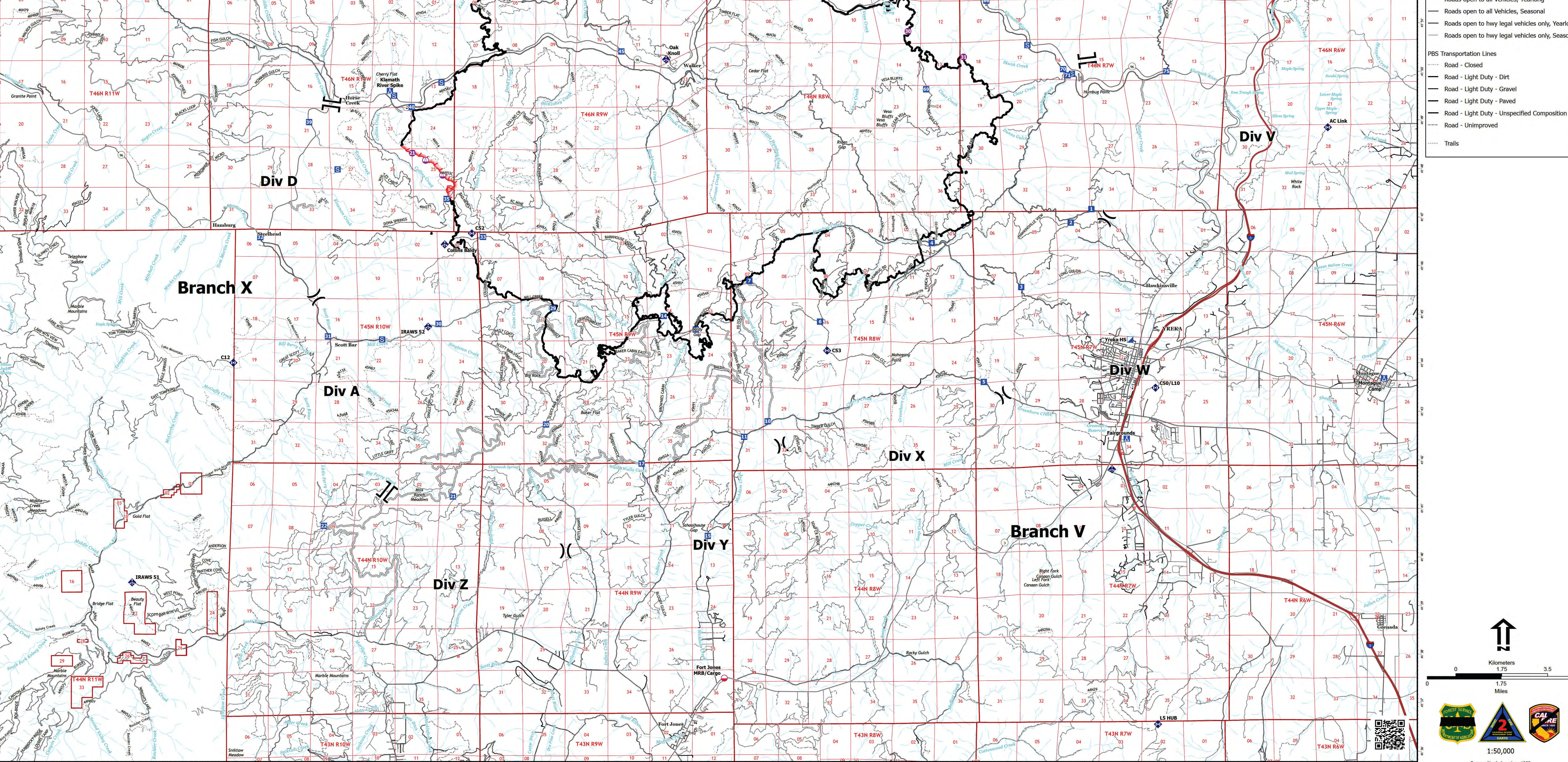


FC Point Type	Label	Latitude WGS84 DDM	Longitude WGS84 DDM
Camp	Fairgrounds	41° 42.465' N	122° 38.365' W
Camp	Klamath River Spike	41° 49.659' N	122° 58.617' W
Camp	Montague Camp	41° 43.683' N	122° 31.282' W
Drop Point	1	41° 42.847' N	122° 48.236' W
Drop Point	11	41° 42.528' N	122° 48.883' W
Drop Point	13	41° 44.741' N	122° 50.206' W
Drop Point	14	41° 45.020' N	122° 51.087' W
Drop Point	15	41° 46.289' N	122° 49.887' W
Drop Point	17	41° 41.980' N	122° 51.291' W
Drop Point	2	41° 46.919' N	122° 39.882' W
Drop Point	20	41° 42.789' N	122° 54.327' W
Drop Point	21	41° 41.306' N	122° 56.890' W
Drop Point	22	41° 40.704' N	122° 00.434' W
Drop Point	29	41° 45.180' N	122° 54.132' W
Drop Point	3	41° 45.596' N	122° 41.251' W
Drop Point	30	41° 44.863' N	122° 57.281' W
Drop Point	31	41° 44.605' N	122° 00.323' W
Drop Point	32	41° 46.648' N	122° 02.185' W
Drop Point	33	41° 46.652' N	122° 56.058' W
Drop Point	35	41° 47.433' N	122° 57.058' W
Drop Point	39	41° 49.018' N	122° 00.843' W
Drop Point	4	41° 46.508' N	122° 43.709' W
Drop Point	40	41° 49.327' N	122° 58.018' W
Drop Point	45	41° 50.468' N	122° 52.243' W
Drop Point	5	41° 43.644' N	122° 42.290' W
Drop Point	50	41° 51.833' N	122° 56.039' W
Drop Point	51	41° 52.392' N	122° 55.314' W
Drop Point	55	41° 53.833' N	122° 52.196' W
Drop Point	56	41° 52.997' N	122° 51.596' W
Drop Point	6	41° 44.897' N	122° 46.788' W
Drop Point	60	41° 52.208' N	122° 49.061' W
Drop Point	64	41° 50.027' N	122° 44.283' W
Drop Point	65	41° 51.497' N	122° 44.183' W
Drop Point	69	41° 49.675' N	122° 43.849' W
Drop Point	7	41° 45.741' N	122° 48.731' W
Drop Point	70	41° 50.080' N	122° 40.076' W
Drop Point	71	41° 49.952' N	122° 39.950' W
Drop Point	75	41° 50.027' N	122° 37.231' W
Drop Point	7	41° 51.672' N	122° 44.965' W
Helispot	2	41° 53.107' N	122° 48.513' W
Helispot	21	41° 48.380' N	122° 58.002' W
Helispot	30	41° 50.872' N	122° 44.346' W
Helispot	31	41° 50.338' N	122° 42.816' W
Incident Command Post	Yreka HS	41° 44.505' N	122° 38.261' W
Staging Area		41° 49.833' N	122° 57.196' W
Staging Area		41° 49.982' N	122° 39.835' W
Staging Area		41° 50.578' N	122° 41.057' W
Staging Area		41° 51.863' N	122° 43.704' W
Staging Area		41° 44.541' N	122° 58.834' W
Staging Area		41° 48.045' N	122° 00.057' W
Staging Area		41° 49.562' N	122° 58.503' W



**Legend**

- Mobile Retardant Base
- Helispot
- Sling Site
- Division Break
- Branch Break
- Incident Command Post
- Drop Point
- Camp
- Staging Area
- Mobile Weather Unit
- Internet Access
- Repeater
- Contained
- Uncontained
- Access or Improved Road

**Transportation**

- Expressway
- Local Connector
- Local Road
- Ramp
- 4WD

**Motor Vehicle Use Map: Roads**

- Roads open to all Vehicles, Yearlong
- Roads open to all Vehicles, Seasonal
- Roads open to hwy legal vehicles only, Yearlong
- Roads open to hwy legal vehicles only, Seasonal

**PBS Transportation Lines**

- Road - Closed
- Road - Light Duty - Dirt
- Road - Light Duty - Gravel
- Road - Light Duty - Paved
- Road - Light Duty - Unspecified Composition
- Road - Unimproved
- Trails

0 1.75 3.5  
 Kilometers

0 1 2 3  
 Miles

1:50,000

Datum: North American 1983