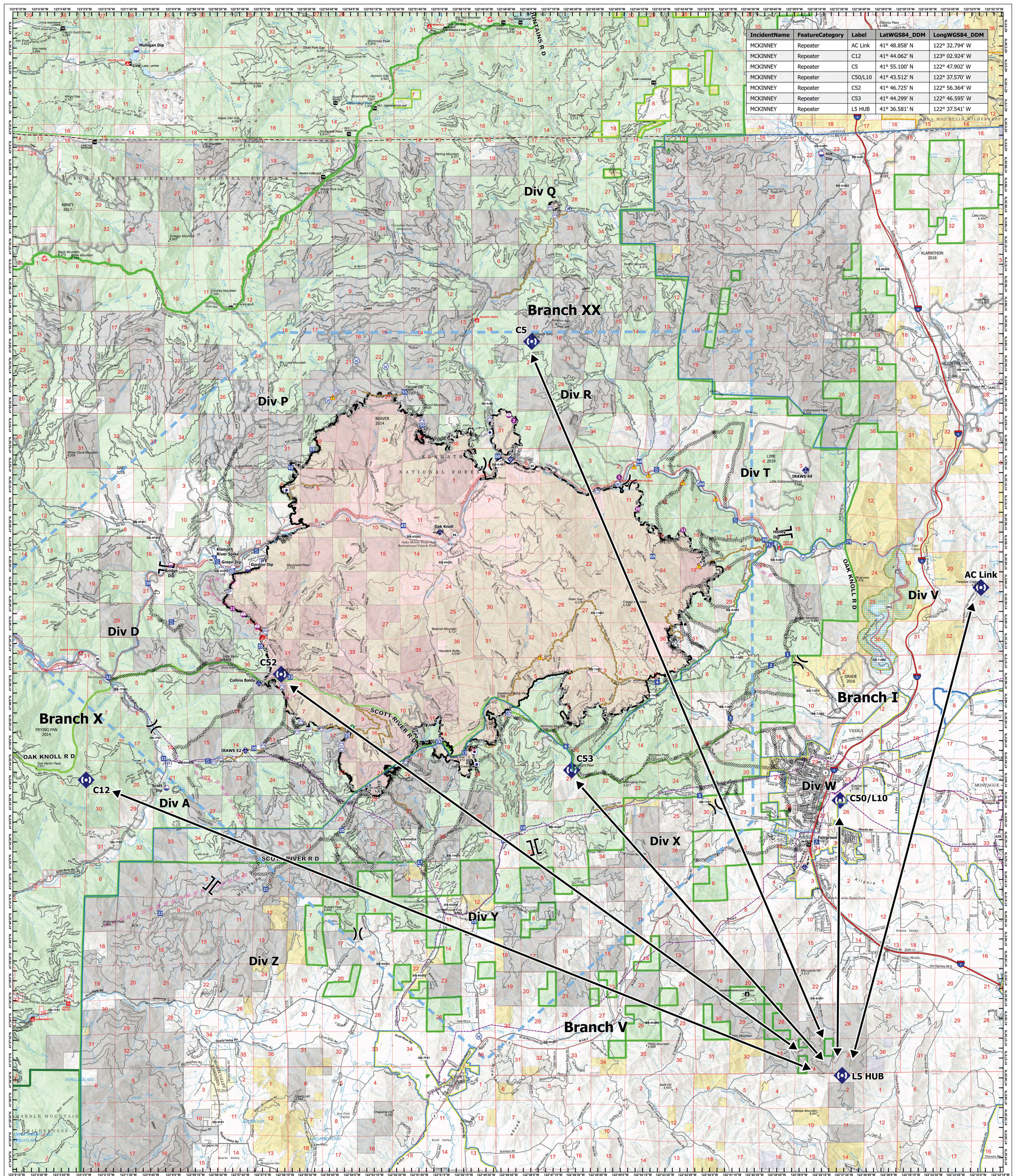


IncidentName	FeatureCategory	Label	LatWGS84_DDM	LongWGS84_DDM
MCKINNEY	Repeater	AC Link	41° 48.858' N	122° 32.794' W
MCKINNEY	Repeater	C12	41° 44.062' N	122° 02.924' W
MCKINNEY	Repeater	C5	41° 55.100' N	122° 47.902' W
MCKINNEY	Repeater	C50/L10	41° 43.512' N	122° 37.570' W
MCKINNEY	Repeater	C52	41° 46.725' N	122° 56.364' W
MCKINNEY	Repeater	C53	41° 44.299' N	122° 46.595' W
MCKINNEY	Repeater	L5 HUB	41° 36.581' N	122° 37.541' W



COMMUNICATIONS

McKinney Fire
CA-KNF-006177

August 17, 2022
 60,392 acres on 8/16/22 at 21:45

- Other Property
- Pump
- Water Tank
- Dip Site
- Helispot
- Sling Site
- Division Break
- Branch Break
- Drop Point
- Camp
- Staging Area
- Lookout
- Hot Spot - Spot Fire
- Value at Risk
- Hazard Tree
- Mobile Weather Unit
- Internet Access
- Repeater
- Water Source
- Completed Dozer Line
- Completed Hand Line
- Completed Mixed Construction Line
- Completed Road as Line
- Planned Dozer Line
- Access or Improved Road
- Road Repair
- Temporary Flight Restriction
- Contained
- Uncontained
- Wildfire Daily Fire Perimeter
- Fire History
- Powerlines
- Ranger District Office
- Region/Supervisor Office
- Campground
- Trailhead
- Picnic Site
- Boating Site
- National_Trails
- Trail
- Tunnel; Bridge
- Paved Road
- Gravel Road
- Dirt Roads
- Unimproved Roads
- Closed Roads
- Railroad
- Runway
- Forestry Industry Owners
- Administrative FS Boundary
- Ranger District Boundary
- FS Wilderness Boundary
- American Indian Areas, American Indian Areas
- Wilderness Boundary, BLM
- Area of Critical Environmental Concern, BLM
- Other Designated Boundary
- Wild and Scenic River
- State Boundary
- County Boundary
- Incorporated Place
- Census Designated Place
- Scenic Byway
- Forest Service Land
- State Public Lands
- Other State Lands
- Bureau of Land Management Lands
- American Indian Land BLM
- Urban Area
- DPA_AGENCY
- California Department of Forestry and Fire Protection
- Local
- USDA Forest Service

Spatial Reference: Name: NAD 1983 UTM Zone 10N
 Datum: North American 1983

Scale: 1:52,000

COMMUNICATION

CHM12 GIS 8/16/2022 2006 Acres from IR and GPS