

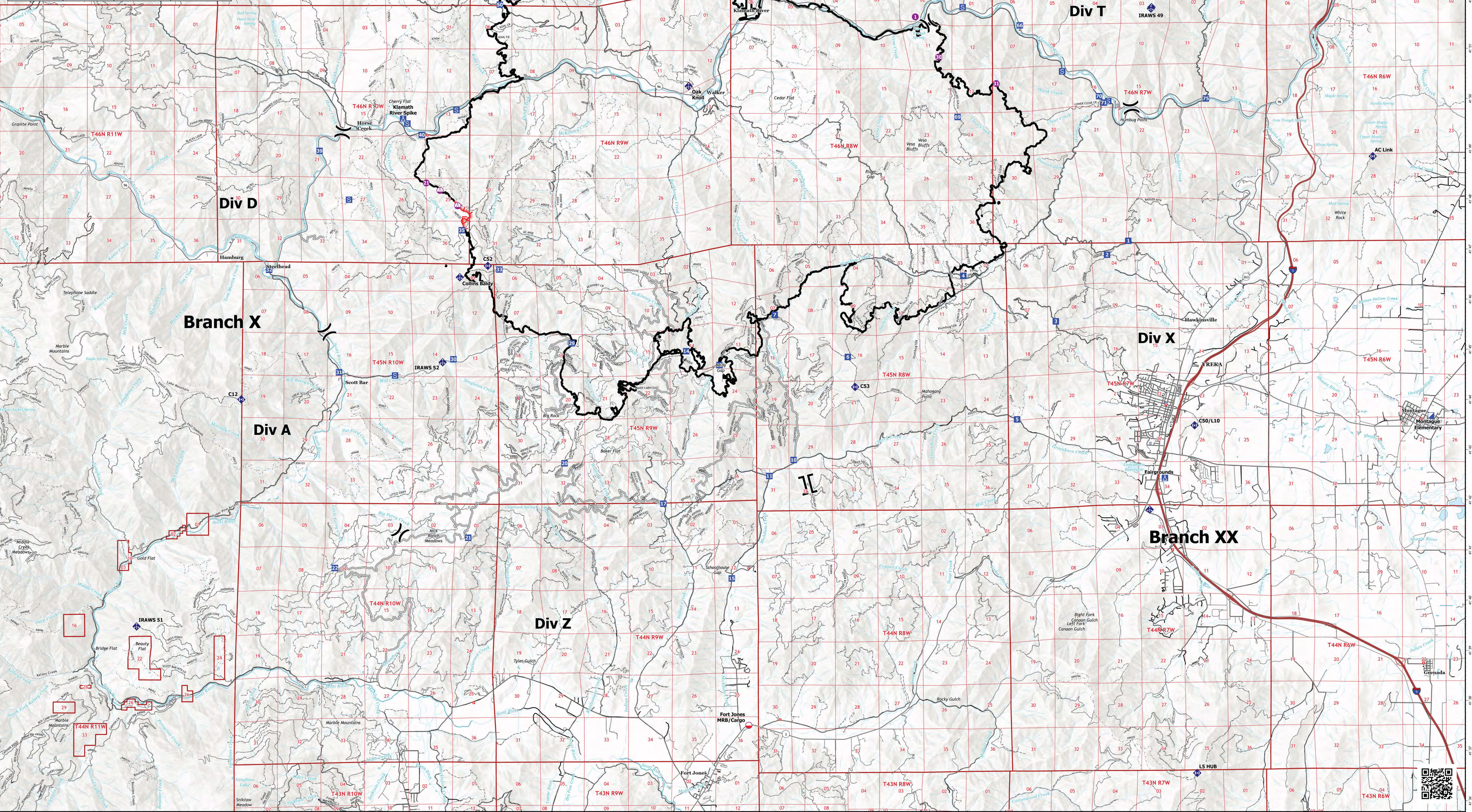
Transportation Map

McKinney Fire

CA-KNF-006177

acres on

FC Point Type	Label	Latitude WGS84 DDM	Longitude WGS84 DDM
Camp	Fairgrounds	41° 42.465' N	122° 58.365' W
Camp	Klamath River Spike	41° 49.659' N	122° 58.617' W
Drop Point	1	41° 47.195' N	122° 59.314' W
Drop Point	10	41° 42.847' N	122° 48.236' W
Drop Point	11	41° 42.528' N	122° 48.883' W
Drop Point	13	41° 44.241' N	122° 50.297' W
Drop Point	14	41° 45.020' N	122° 51.087' W
Drop Point	15	41° 40.489' N	122° 49.887' W
Drop Point	17	41° 41.980' N	122° 51.701' W
Drop Point	2	41° 46.919' N	122° 59.882' W
Drop Point	20	41° 42.789' N	122° 54.327' W
Drop Point	21	41° 41.286' N	122° 50.897' W
Drop Point	22	41° 40.704' N	122° 00.434' W
Drop Point	29	41° 45.180' N	122° 54.132' W
Drop Point	3	41° 45.596' N	122° 41.251' W
Drop Point	30	41° 44.863' N	122° 57.281' W
Drop Point	31	41° 44.605' N	122° 53.323' W
Drop Point	32	41° 46.549' N	122° 42.185' W
Drop Point	33	41° 46.652' N	122° 56.058' W
Drop Point	35	41° 47.435' N	122° 57.058' W
Drop Point	39	41° 49.018' N	122° 00.843' W
Drop Point	4	41° 46.508' N	122° 43.709' W
Drop Point	40	41° 49.337' N	122° 48.120' W
Drop Point	5	41° 43.544' N	122° 42.280' W
Drop Point	50	41° 51.933' N	122° 56.039' W
Drop Point	51	41° 52.392' N	122° 55.314' W
Drop Point	55	41° 53.833' N	122° 52.196' W
Drop Point	56	41° 52.997' N	122° 51.596' W
Drop Point	6	41° 44.897' N	122° 46.078' W
Drop Point	60	41° 52.206' N	122° 49.061' W
Drop Point	64	41° 52.070' N	122° 44.283' W
Drop Point	66	41° 51.497' N	122° 42.183' W
Drop Point	69	41° 49.675' N	122° 43.849' W
Drop Point	7	41° 45.741' N	122° 43.731' W
Drop Point	70	41° 50.080' N	122° 43.734' W
Drop Point	71	41° 49.952' N	122° 39.952' W
Drop Point	75	41° 50.027' N	122° 37.231' W
Helispot	1	41° 51.673' N	122° 44.966' W
Helispot	2	41° 53.107' N	122° 48.513' W
Helispot	21	41° 48.380' N	122° 58.002' W
Helispot	30	41° 50.872' N	122° 46.248' W
Helispot	31	41° 50.336' N	122° 42.816' W
Incident Command Post	Montague Elementary	41° 43.683' N	122° 31.282' W
Staging Area		41° 49.833' N	122° 57.196' W
Staging Area		41° 49.882' N	122° 39.835' W
Staging Area		41° 50.578' N	122° 41.057' W
Staging Area		41° 51.863' N	122° 43.734' W
Staging Area		41° 44.541' N	122° 58.834' W
Staging Area		41° 48.045' N	122° 00.057' W
Staging Area		41° 49.562' N	122° 58.503' W



- Mobile Retardant Base
 - Helispot
 - Sling Site
 - X Division Break
 - X Branch Break
 - X Incident Command Post
 - Drop Point
 - Camp
 - Staging Area
 - ◆ Mobile Weather Unit
 - ◆ Internet Access
 - ◆ Repeater
 - Contained
 - Uncontained
 - Access or Improved Road
- Transportation**
- Expressway
 - Local Connector
 - Local Road
 - Ramp
 - 4WD
- Motor Vehicle Use Map: Roads**
- Roads open to all Vehicles, Yearlong
 - Roads open to all Vehicles, Seasonal
 - Roads open to hwy legal vehicles only, Yearlong
 - Roads open to hwy legal vehicles only, Seasonal
- PBS Transportation Lines**
- Road - Closed
 - Road - Light Duty - Dirt
 - Road - Light Duty - Gravel
 - Road - Light Duty - Paved
 - Road - Light Duty - Unspecified Composition
 - Road - Unimproved
 - Trails

Kilometers 1.75 3.5

Miles 1.75 3.5

1:50,000

Datum: North American 1983