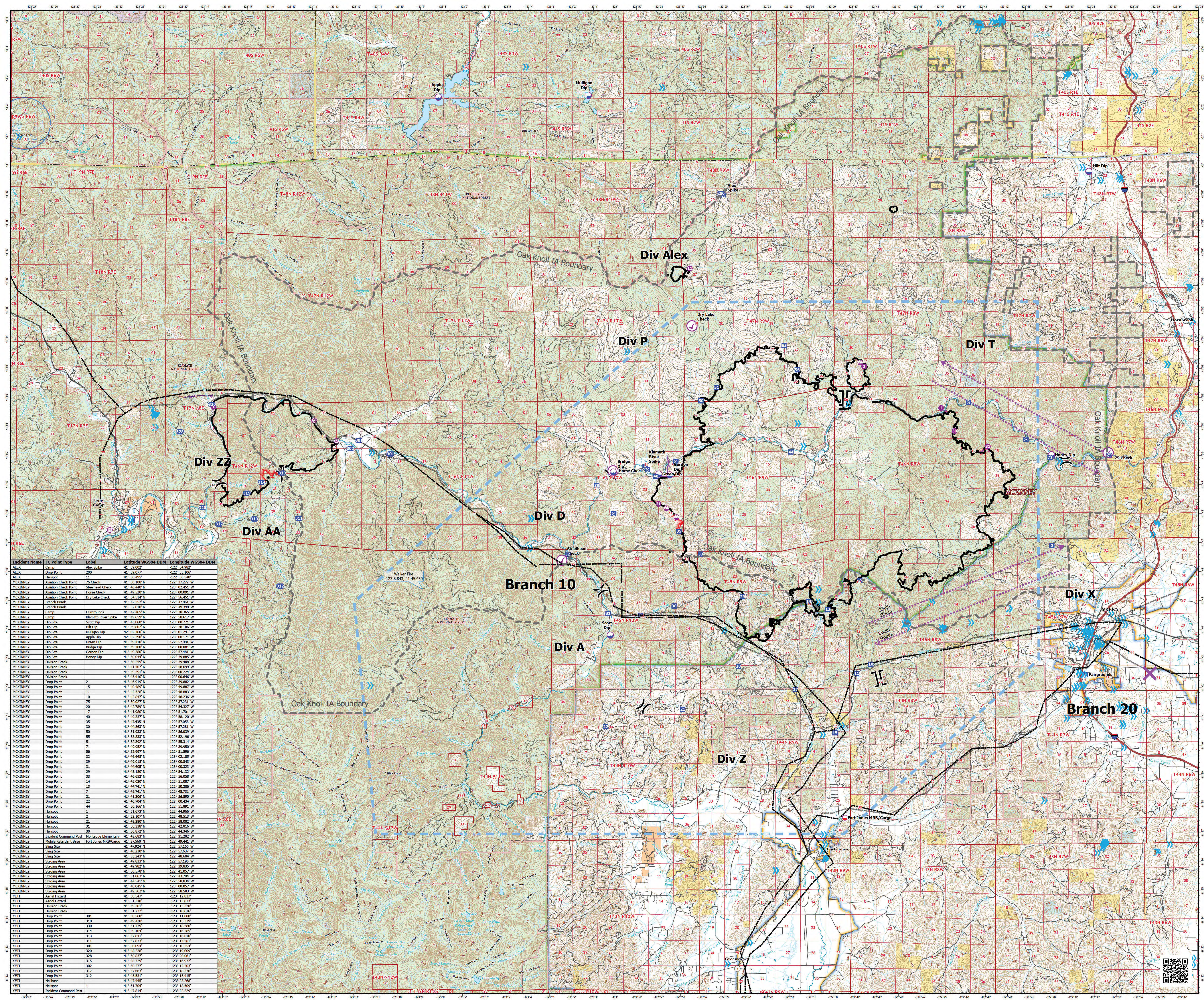


# Air Ops McKinney Fire CA-KNF-006177 August 23, 2022

60,138 acres on 8/21/22  
2205



- ⊙ Aerial Hazard
  - ⊙ Dip Site
  - ⊙ Aviation Check Point
  - ⊙ Mobile Retardant Base
  - ⊙ Helispot
  - ⊙ Helibase
  - ⊙ Sling Site
  - X Division Break
  - II Branch Break
  - II Incident Command Post
  - Drop Point
  - Camp
  - Staging Area
  - × Intersection Points
  - Contained
  - Uncontained
  - Other
  - Aerial Hazard
  - Retardant Drop
  - Aviation Route
  - Temporary Flight Restriction
  - Oak Knoll IA Boundary
- Direct Protection Areas by Agency
- CDF
  - LOCAL
  - USFS
- Surface Management by Agency
- Bureau of Indian Affairs (BIA)
  - Bureau of Land Management (BLM)
  - Department of Defense (DOD)
  - National Park Service (NPS)
  - State
  - US Forest Service (USFS)
- Powerline
- Bridge/Ovepass/Viaduct
  - Military Training Route
  - Telephone Line/Telegraph Line
  - Power Transmission Line
  - Power Transmission Line
  - Tower

Incident Name	FC Point Type	Label	Latitude WGS84 DDM	Longitude WGS84 DDM
ALEX	Camp	Alex Spike	41° 59.027' N	122° 54.582' W
ALEX	Drop Point	200	41° 59.077' N	122° 55.106' W
ALEX	Helispot	11	41° 59.495' N	122° 56.496' W
MCKINNEY	Aviation Check Point	75 Check	41° 50.108' N	122° 37.272' W
MCKINNEY	Aviation Check Point	Sheelhead Check	41° 46.449' N	122° 02.451' W
MCKINNEY	Aviation Check Point	Hansa Check	41° 49.520' N	122° 00.920' W
MCKINNEY	Aviation Check Point	Dry Lake Check	41° 54.514' N	122° 56.451' W
MCKINNEY	Branch Break		41° 42.357' N	122° 47.861' W
MCKINNEY	Branch Break		41° 53.018' N	122° 49.768' W
MCKINNEY	Camp	Fairgrounds	41° 42.465' N	122° 38.365' W
MCKINNEY	Camp	Klamath River Spike	41° 49.659' N	122° 58.617' W
MCKINNEY	Dip Site	Scott Dip	41° 41.869' N	122° 00.211' W
MCKINNEY	Dip Site	Hill Dip	41° 59.802' N	122° 38.106' W
MCKINNEY	Dip Site	Mulligan Dip	42° 02.460' N	122° 01.241' W
MCKINNEY	Dip Site	Apple Dip	42° 03.292' N	122° 08.171' W
MCKINNEY	Dip Site	Green Dip	41° 49.412' N	122° 57.981' W
MCKINNEY	Dip Site	Bridge Dip	41° 49.480' N	122° 00.081' W
MCKINNEY	Dip Site	Carson Dip	41° 49.280' N	122° 47.481' W
MCKINNEY	Dip Site	Honey Dip	41° 50.044' N	122° 39.885' W
MCKINNEY	Division Break		41° 50.259' N	122° 39.498' W
MCKINNEY	Division Break		41° 41.407' N	122° 58.699' W
MCKINNEY	Division Break		41° 49.391' N	122° 00.224' W
MCKINNEY	Division Break		41° 45.410' N	122° 00.846' W
MCKINNEY	Drop Point	2	41° 46.919' N	122° 39.882' W
MCKINNEY	Drop Point	15	41° 40.489' N	122° 49.887' W
MCKINNEY	Drop Point	11	41° 42.528' N	122° 48.883' W
MCKINNEY	Drop Point	19	41° 46.919' N	122° 39.882' W
MCKINNEY	Drop Point	75	41° 50.027' N	122° 37.231' W
MCKINNEY	Drop Point	20	41° 42.789' N	122° 54.327' W
MCKINNEY	Drop Point	121	41° 41.869' N	122° 01.241' W
MCKINNEY	Drop Point	40	41° 49.337' N	122° 58.120' W
MCKINNEY	Drop Point	35	41° 47.435' N	122° 57.098' W
MCKINNEY	Drop Point	81	41° 46.919' N	122° 39.882' W
MCKINNEY	Drop Point	50	41° 51.933' N	122° 56.039' W
MCKINNEY	Drop Point	55	41° 53.833' N	122° 52.196' W
MCKINNEY	Drop Point	53	41° 53.292' N	122° 53.718' W
MCKINNEY	Drop Point	71	41° 49.952' N	122° 39.950' W
MCKINNEY	Drop Point	56	41° 53.997' N	122° 51.596' W
MCKINNEY	Drop Point	23	41° 46.648' N	122° 03.746' W
MCKINNEY	Drop Point	39	41° 49.018' N	122° 00.843' W
MCKINNEY	Drop Point	31	41° 44.605' N	122° 00.233' W
MCKINNEY	Drop Point	28	41° 46.188' N	122° 57.218' W
MCKINNEY	Drop Point	33	41° 46.652' N	122° 56.058' W
MCKINNEY	Drop Point	14	41° 45.020' N	122° 51.057' W
MCKINNEY	Drop Point	13	41° 45.741' N	122° 50.298' W
MCKINNEY	Drop Point	7	41° 45.741' N	122° 48.731' W
MCKINNEY	Drop Point	21	41° 41.306' N	122° 56.890' W
MCKINNEY	Drop Point	22	41° 42.845' N	122° 00.949' W
MCKINNEY	Drop Point	44	41° 50.166' N	122° 51.891' W
MCKINNEY	Helispot	1	41° 51.673' N	122° 44.866' W
MCKINNEY	Helispot	2	41° 45.107' N	122° 45.327' W
MCKINNEY	Helispot	21	41° 48.380' N	122° 58.002' W
MCKINNEY	Helispot	31	41° 50.338' N	122° 42.816' W
MCKINNEY	Helispot	22	41° 50.872' N	122° 44.266' W
MCKINNEY	Incident Command Post	Montague Elementary	41° 43.683' N	122° 31.282' W
MCKINNEY	Mobile Retardant Base	Fort Jones MRB/Cargo	41° 37.560' N	122° 49.441' W
MCKINNEY	Sling Site		41° 42.816' N	122° 57.466' W
MCKINNEY	Sling Site		41° 48.320' N	122° 57.627' W
MCKINNEY	Sling Site		41° 53.243' N	122° 48.684' W
MCKINNEY	Staging Area		41° 49.833' N	122° 57.186' W
MCKINNEY	Staging Area		41° 49.982' N	122° 39.935' W
MCKINNEY	Staging Area		41° 50.578' N	122° 41.057' W
MCKINNEY	Staging Area		41° 51.963' N	122° 43.294' W
MCKINNEY	Staging Area		41° 44.541' N	122° 58.834' W
MCKINNEY	Staging Area		41° 48.045' N	122° 00.057' W
MCKINNEY	Staging Area		41° 49.962' N	122° 58.268' W
YETI	Aerial Hazard		41° 50.547' N	123° 12.837' W
YETI	Aerial Hazard		41° 51.248' N	123° 13.873' W
YETI	Division Break		41° 49.383' N	123° 15.320' W
YETI	Drop Point	301	41° 50.560' N	123° 11.800' W
YETI	Drop Point	310	41° 49.438' N	123° 15.320' W
YETI	Drop Point	330	41° 51.779' N	123° 18.580' W
YETI	Drop Point	314	41° 49.104' N	123° 16.280' W
YETI	Drop Point	313	41° 47.841' N	123° 16.610' W
YETI	Drop Point	311	41° 47.873' N	123° 14.561' W
YETI	Drop Point	301	41° 50.594' N	123° 10.254' W
YETI	Drop Point	320	41° 48.238' N	123° 14.809' W
YETI	Drop Point	328	41° 50.837' N	123° 20.061' W
YETI	Drop Point	315	41° 48.729' N	123° 16.972' W
YETI	Drop Point	302	41° 50.273' N	123° 12.203' W
YETI	Drop Point	317	41° 47.663' N	123° 18.236' W
YETI	Drop Point	312	41° 45.531' N	123° 15.415' W
YETI	Helispot		41° 47.495' N	123° 23.868' W
YETI	Helispot		41° 51.704' N	123° 18.509' W
YETI	Incident Command Post		41° 47.814' N	123° 22.229' W

80 feet contours

0 2 4  
Kilometers

0 2 4  
Miles

1:70,000  
Datum: North American 1983

**AIR OPS**