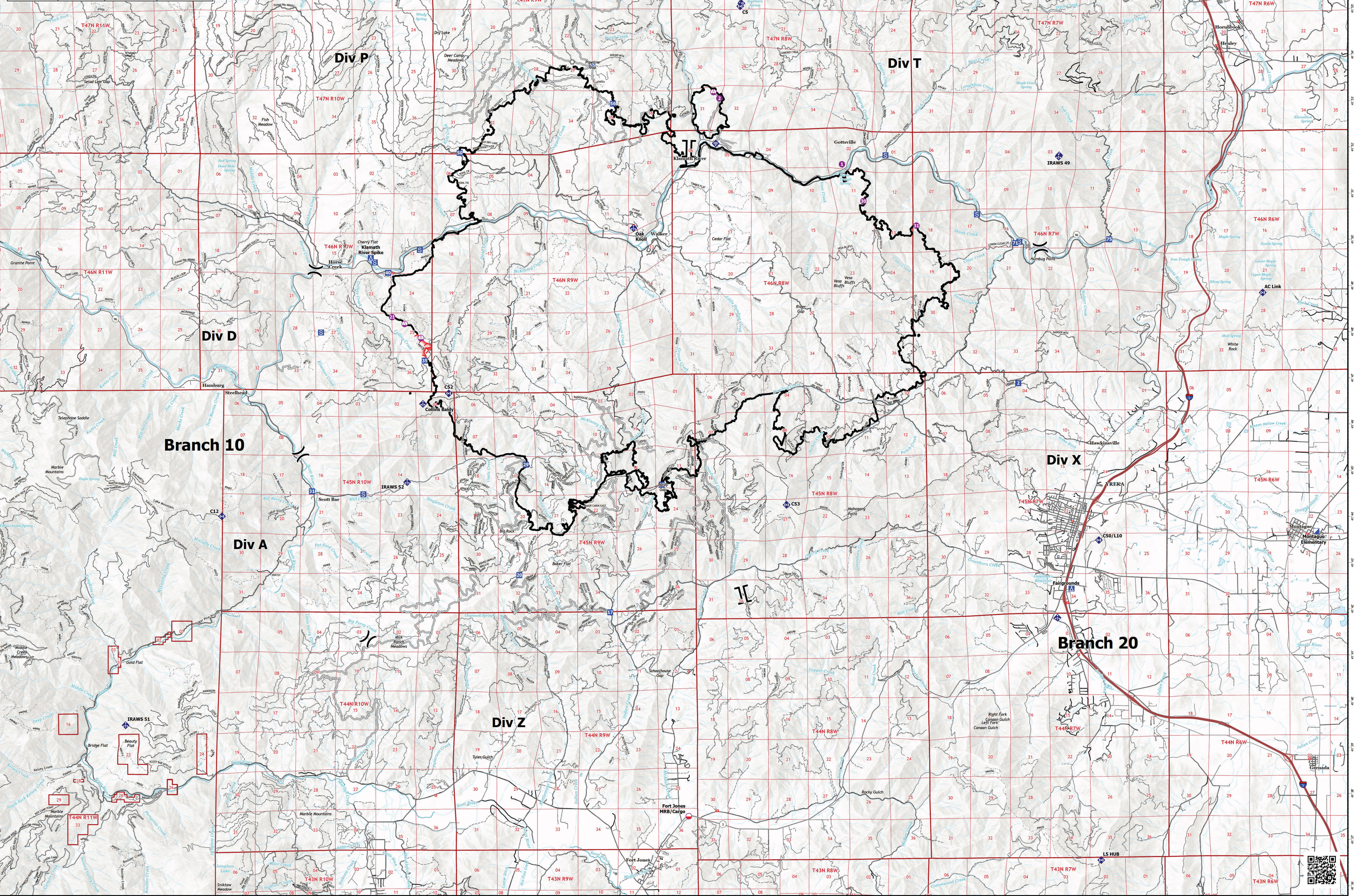


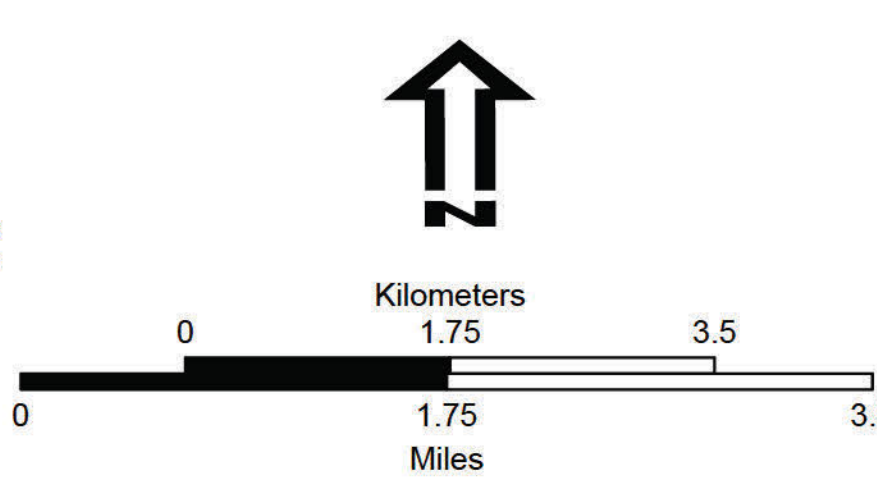
**Transportation Map**  
**McKinney Fire**  
**CA-KNF-006177**

August 25, 2022  
 60,138 acres on 8/23/22  
 2200

FC Point Type	Label	Latitude WGS84 DDM	Longitude WGS84 DDM
Camp	Fairgrounds	41° 42.465' N	122° 58.365' W
Camp	Klamath River Spike	41° 49.659' N	122° 58.617' W
Drop Point	13	41° 44.741' N	122° 50.206' W
Drop Point	17	41° 41.980' N	122° 51.701' W
Drop Point	2	41° 46.919' N	122° 59.882' W
Drop Point	20	41° 42.789' N	122° 52.136' W
Drop Point	29	41° 45.180' N	122° 54.132' W
Drop Point	31	41° 44.605' N	123° 00.323' W
Drop Point	35	41° 47.435' N	122° 57.058' W
Drop Point	40	41° 49.337' N	122° 58.120' W
Drop Point	50	41° 51.933' N	122° 56.039' W
Drop Point	55	41° 53.833' N	122° 53.136' W
Drop Point	56	41° 52.997' N	122° 51.596' W
Drop Point	71	41° 49.952' N	122° 39.950' W
Drop Point	75	41° 50.027' N	122° 37.231' W
Hellspot	1	41° 51.673' N	122° 44.966' W
Hellspot	2	41° 53.107' N	122° 48.513' W
Hellspot	21	41° 48.380' N	122° 53.002' W
Hellspot	30	41° 50.872' N	122° 44.346' W
Hellspot	31	41° 50.338' N	122° 42.816' W
Incident Command Post	Montague Elementary	41° 43.683' N	122° 31.282' W
Landmark		41° 53.902' N	122° 52.778' W
Staging Area		41° 49.833' N	122° 57.196' W
Staging Area		41° 49.882' N	122° 59.825' W
Staging Area		41° 50.578' N	122° 41.057' W
Staging Area		41° 51.863' N	122° 43.704' W
Staging Area		41° 44.541' N	122° 58.834' W
Staging Area		41° 48.045' N	123° 00.057' W
Staging Area		41° 49.562' N	122° 58.503' W



- Mobile Retardant Base
- Hellspot
- Sling Site
- X Division Break
- X Branch Break
- X Incident Command Post
- Drop Point
- Camp
- Staging Area
- Landmark
- ◆ Mobile Weather Unit
- ◆ Internet Access
- ◆ Repeater
- ▬ Contained
- ▬ Uncontained
- ▬ Access or Improved Road
- Transportation
- ▬ Expressway
- ▬ Local Connector
- ▬ Local Road
- ▬ Ramp
- ▬ 4WD
- Motor Vehicle Use Map: Roads
- ▬ Roads open to all Vehicles, Yearlong
- ▬ Roads open to all Vehicles, Seasonal
- ▬ Roads open to hwy legal vehicles only, Yearlong
- ▬ Roads open to hwy legal vehicles only, Seasonal
- PBS Transportation Lines
- ▬ Road - Closed
- ▬ Road - Light Duty - Dirt
- ▬ Road - Light Duty - Gravel
- ▬ Road - Light Duty - Paved
- ▬ Road - Light Duty - Unspecified Composition
- ▬ Road - Unimproved
- ▬ Trails



1:50,000  
 Datum: North American 1983