

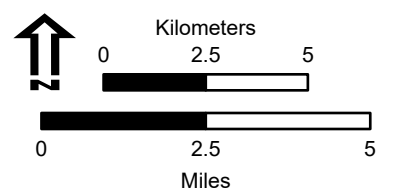
# Pilot Map

## McKinney Fire

### CA-KNF-006177

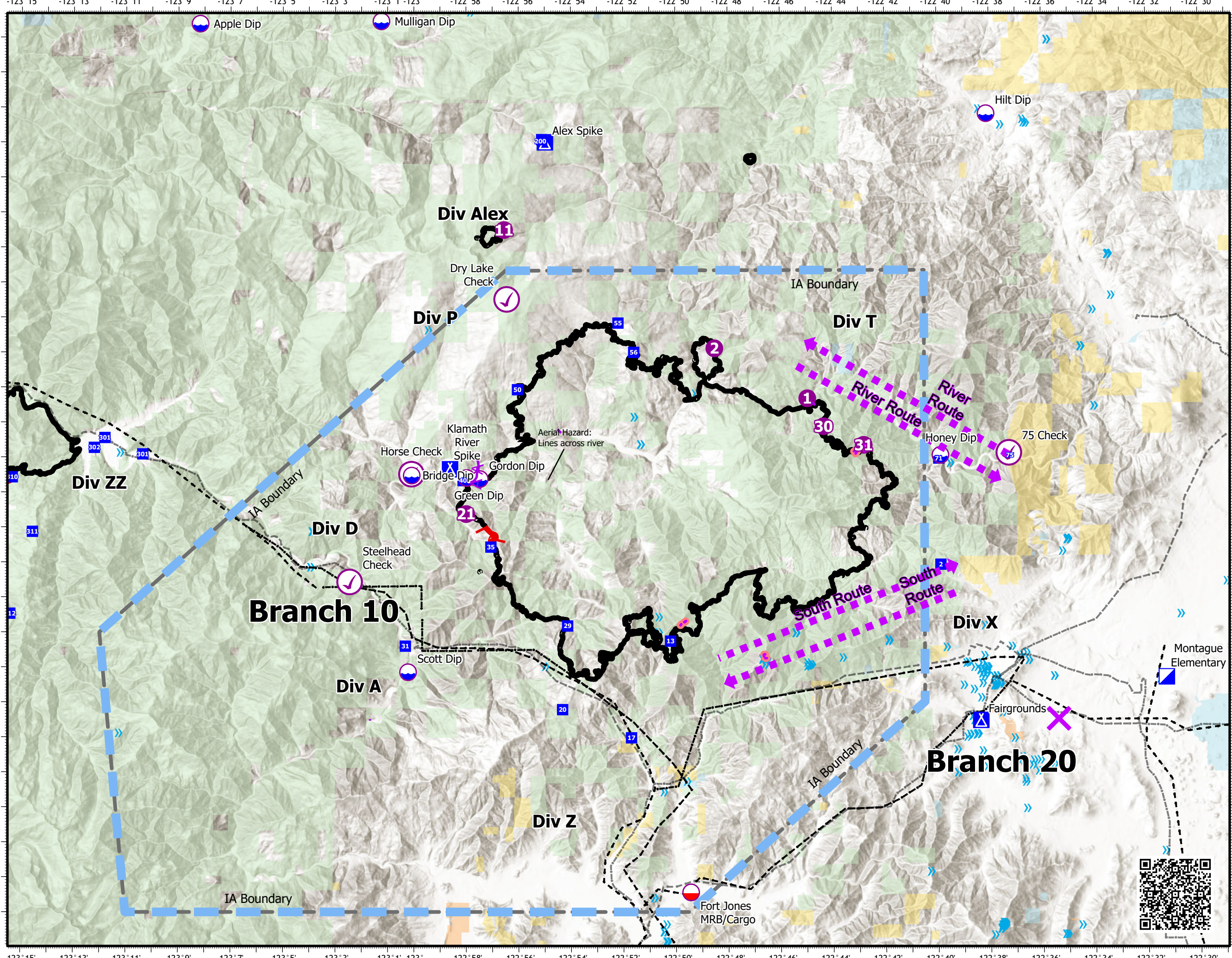
August 26, 2022  
60,138 acres at 8/23/22 2200

- Aviation Check Point
- Dip Site
- Mobile Retardant Base
- Helispot
- Incident Command Post
- Drop Point
- Camp
- Intersection Points
- Aerial Hazard
- Retardant Drop
- Aviation Route
- Temporary Flight Restriction
- IA Boundary
- Contained
- Uncontained
- Powerline
- Bridge/Ovepass/Viaduct
- Military Training Route
- Telephone Line/Telegraph Line
- Power Transmission Line
- Power Transmission Line
- Tower
- Bureau of Indian Affairs (BIA)
- Bureau of Land Management (BLM)
- State
- US Forest Service (USFS)



1:185,000  
Datum: North American 1983

**PILOT**



<b>IncidentName</b>	<b>FeatureCategory</b>	<b>Label</b>	<b>LatWGS84_DDM</b>	<b>LongWGS84_DDM</b>
ALEX	Drop Point	200	41° 59.077'	-122° 55.106'
ALEX	Helispot	11	41° 56.495'	-122° 56.548'
MCKINNEY	Aviation Check Point	75 Check	41° 50.108' N	122° 37.272' W
MCKINNEY	Aviation Check Point	Steelhead Check	41° 46.440' N	123° 02.451' W
MCKINNEY	Aviation Check Point	Horse Check	41° 49.520' N	123° 00.091' W
MCKINNEY	Aviation Check Point	Dry Lake Check	41° 54.514' N	122° 56.451' W
MCKINNEY	Dip Site	Scott Dip	41° 43.860' N	123° 00.221' W
MCKINNEY	Dip Site	Hilt Dip	41° 59.802' N	122° 38.106' W
MCKINNEY	Dip Site	Mulligan Dip	42° 02.460' N	123° 01.241' W
MCKINNEY	Dip Site	Apple Dip	42° 02.390' N	123° 08.171' W
MCKINNEY	Dip Site	Green Dip	41° 49.410' N	122° 57.981' W
MCKINNEY	Dip Site	Bridge Dip	41° 49.480' N	123° 00.081' W
MCKINNEY	Dip Site	Gordon Dip	41° 49.380' N	122° 57.481' W
MCKINNEY	Dip Site	Honey Dip	41° 50.044' N	122° 39.885' W
MCKINNEY	Drop Point	2	41° 46.919' N	122° 39.882' W
MCKINNEY	Drop Point	75	41° 50.027' N	122° 37.231' W
MCKINNEY	Drop Point	20	41° 42.789' N	122° 54.327' W
MCKINNEY	Drop Point	17	41° 41.980' N	122° 51.701' W
MCKINNEY	Drop Point	40	41° 49.337' N	122° 58.120' W
MCKINNEY	Drop Point	35	41° 47.435' N	122° 57.058' W
MCKINNEY	Drop Point	50	41° 51.933' N	122° 56.039' W
MCKINNEY	Drop Point	55	41° 53.833' N	122° 52.196' W
MCKINNEY	Drop Point	71	41° 49.952' N	122° 39.950' W
MCKINNEY	Drop Point	56	41° 52.997' N	122° 51.596' W
MCKINNEY	Drop Point	31	41° 44.605' N	123° 00.323' W
MCKINNEY	Drop Point	29	41° 45.180' N	122° 54.132' W
MCKINNEY	Drop Point	13	41° 44.741' N	122° 50.206' W
MCKINNEY	Helispot	1	41° 51.673' N	122° 44.966' W
MCKINNEY	Helispot	2	41° 53.107' N	122° 48.513' W
MCKINNEY	Helispot	21	41° 48.380' N	122° 58.002' W
MCKINNEY	Helispot	31	41° 50.338' N	122° 42.816' W
MCKINNEY	Helispot	30	41° 50.872' N	122° 44.346' W
MCKINNEY	Mobile Retardant Base	Fort Jones MRB/Cargo	41° 37.560' N	122° 49.441' W
YETI	Drop Point	301	41° 50.560'	-123° 11.800'
YETI	Drop Point	310	41° 49.428'	-123° 15.339'
YETI	Drop Point	330	41° 51.779'	-123° 18.580'
YETI	Drop Point	314	41° 49.104'	-123° 16.285'
YETI	Drop Point	313	41° 47.841'	-123° 16.610'
YETI	Drop Point	311	41° 47.873'	-123° 14.561'
YETI	Drop Point	301	41° 50.094'	-123° 10.354'
YETI	Drop Point	320	41° 48.228'	-123° 19.009'
YETI	Drop Point	328	41° 50.837'	-123° 20.061'
YETI	Drop Point	315	41° 48.729'	-123° 16.972'
YETI	Drop Point	302	41° 50.277'	-123° 12.203'
YETI	Drop Point	317	41° 47.663'	-123° 18.236'
YETI	Drop Point	312	41° 45.531'	-123° 15.415'
YETI	Helispot	1	41° 51.704'	-123° 18.509'