

# Operations IR

MCKINNEY  
 August 27, 2022  
 CA-KNF-006177  
 60,138 acres from NIROPS IR  
 NIROPS IR flown on 8/26/2022 at 2021

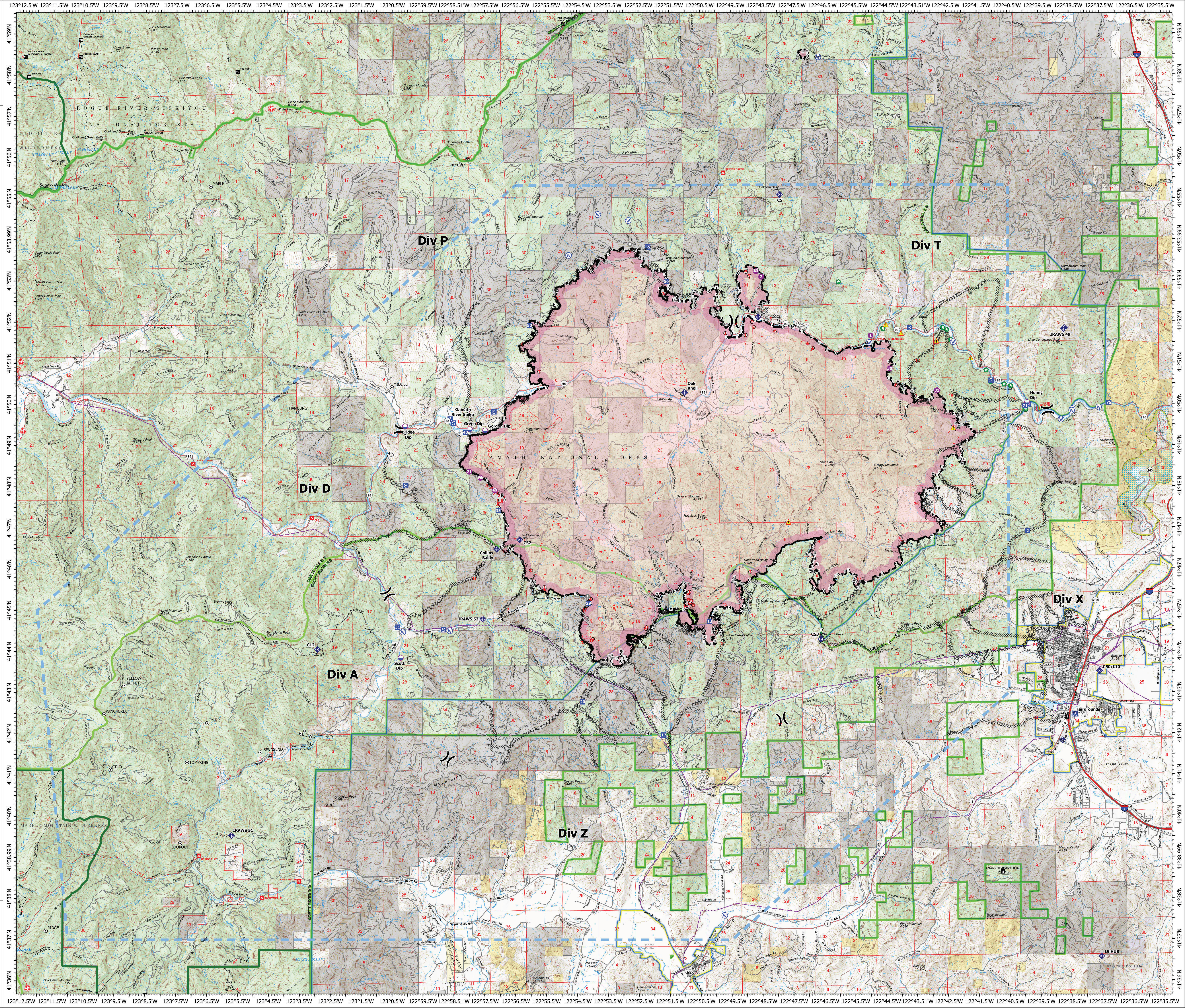
- Spot Checks
- IR Heat Source
- IR Heat Source Intersect (1000 ft)
- Dip Site
- Helispot
- Sling Site
- ⎓ Division Break
- Drop Point
- Camp
- Staging Area
- Lookout
- Value at Risk
- Landmark
- Structure Wrap
- Mobile Weather Unit
- Internet Access
- Repeater
- Hazard
- Water Source
- IR Isolated Heat Source
- BLM
- Completed Hand Line
- Completed Hand Construction Line
- Completed Road as Line
- Access or Improved Road
- Temporary Flight Restriction
- Contained
- Uncontained
- IR Scattered Heat
- Wildfire Daily Fire Perimeter
- CDF
- Local
- USDA Forest Service
- Structures
- Administrative FS Boundary
- Ranger District Boundary
- FS Wilderness Boundary
- State Boundary
- County Boundary
- American Indian Land
- BLM
- Completed Dozer Line

## IR Heat Source within 1000 feet of Fire Perimeter

OBJECTID	LatWGS84_D	LongWGS84
1	41° 44.278' N	122° 54.032' W
2	41° 44.310' N	122° 53.992' W
3	41° 44.559' N	122° 52.276' W
4	41° 44.598' N	122° 52.256' W
5	41° 45.136' N	122° 50.738' W
6	41° 45.160' N	122° 50.853' W
7	41° 45.196' N	122° 50.829' W
8	41° 45.238' N	122° 50.804' W
9	41° 45.268' N	122° 50.893' W
10	41° 45.284' N	122° 54.066' W
11	41° 45.421' N	122° 50.903' W
12	41° 45.454' N	122° 50.862' W
13	41° 45.527' N	122° 55.545' W
14	41° 45.579' N	122° 55.569' W
15	41° 45.945' N	122° 48.887' W
16	41° 45.981' N	122° 56.001' W
17	41° 50.469' N	122° 44.153' W
18	41° 50.811' N	122° 55.724' W
19	41° 51.371' N	122° 46.849' W
20	41° 51.483' N	122° 47.010' W
21	41° 51.691' N	122° 49.022' W
22	41° 51.737' N	122° 49.678' W
23	41° 51.774' N	122° 48.076' W
24	41° 51.886' N	122° 48.753' W
25	41° 52.010' N	122° 48.807' W
26	41° 53.132' N	122° 48.898' W
27	41° 53.229' N	122° 49.013' W

## Spot Checks

Label	LatWGS84 DDM	LongWGS84 DDM
TOWNSEND	41° 55.300' N	123° 06.391' W
HAMBURG	41° 49.830' N	123° 03.551' W
LOOKOUT	41° 39.350' N	123° 07.361' W
MAPLE	41° 55.300' N	123° 06.391' W
RIDGE	41° 37.217' N	123° 11.703' W
YELLOW JACKET	41° 43.180' N	123° 09.174' W
TOMPKINS	41° 41.314' N	123° 07.143' W
MIDDLE	41° 50.430' N	123° 00.508' W
RANCHERIA	41° 42.480' N	123° 09.831' W
TYLER	41° 42.270' N	123° 06.491' W
STUD	41° 41.130' N	123° 09.621' W



↑

Kilometers  
 0 1 2

Miles  
 0 1 2