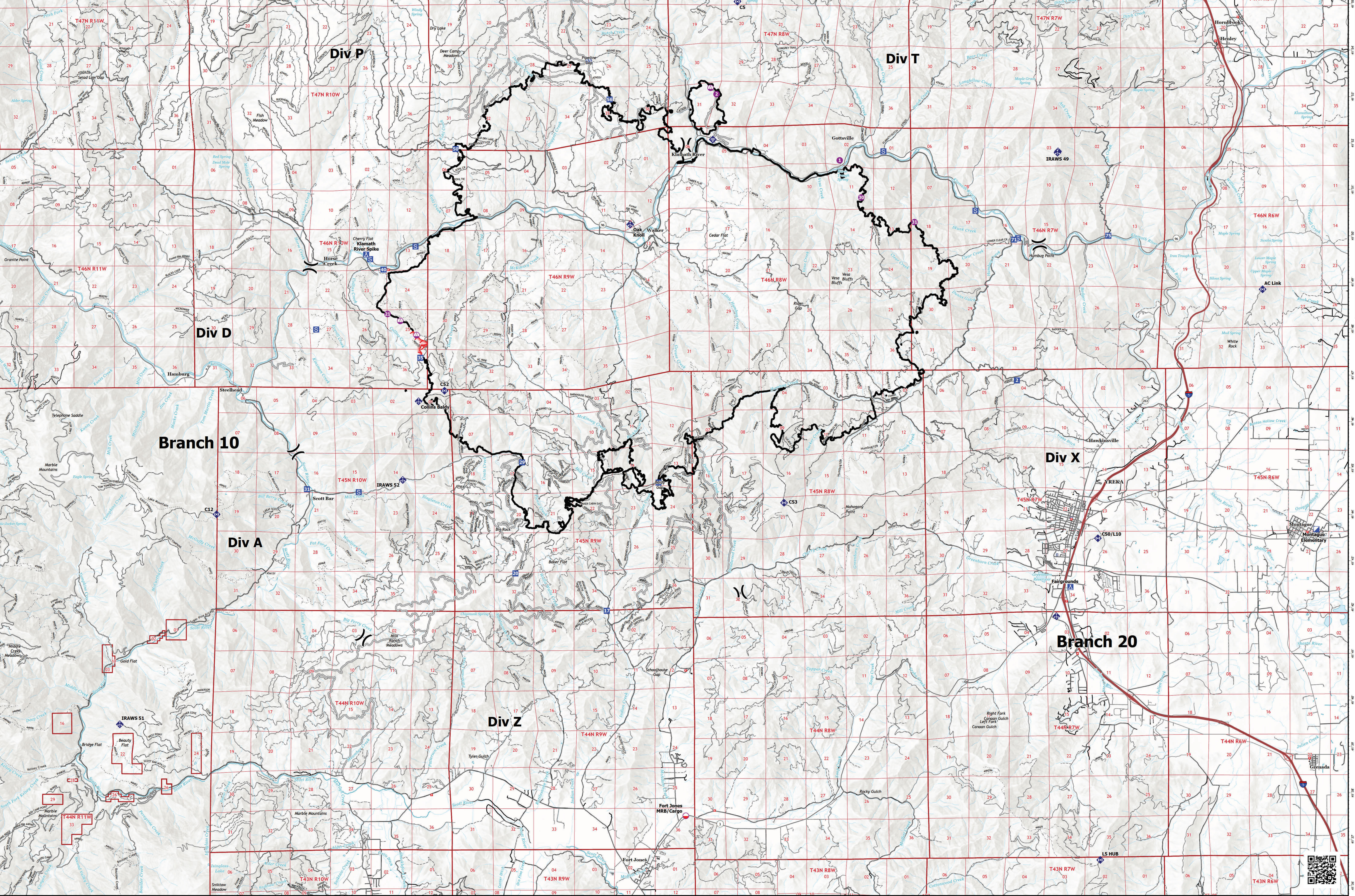


FC Point Type	Label	Latitude WGS84 DDM	Longitude WGS84 DDM
Camp	Fairgrounds	41° 42.465' N	122° 38.265' W
Camp	Klamath River Spike	41° 46.657' N	122° 58.617' W
Drop Point	13	41° 44.741' N	122° 50.206' W
Drop Point	17	41° 41.980' N	122° 51.701' W
Drop Point	2	41° 46.919' N	122° 39.882' W
Drop Point	20	41° 42.789' N	122° 54.327' W
Drop Point	29	41° 45.180' N	122° 54.132' W
Drop Point	31	41° 46.927' N	122° 00.227' W
Drop Point	35	41° 47.435' N	122° 57.058' W
Drop Point	40	41° 49.337' N	122° 58.120' W
Drop Point	50	41° 51.933' N	122° 56.039' W
Drop Point	55	41° 53.833' N	122° 52.196' W
Drop Point	56	41° 52.997' N	122° 51.596' W
Drop Point	71	41° 48.927' N	122° 39.857' W
Drop Point	75	41° 50.027' N	122° 37.231' W
Helispot	1	41° 51.673' N	122° 44.966' W
Helispot	2	41° 53.107' N	122° 48.513' W
Helispot	21	41° 48.380' N	122° 58.002' W
Helispot	30	41° 50.872' N	122° 44.246' W
Helispot	31	41° 50.339' N	122° 42.816' W
Incident Command Post	Montague Elementary	41° 43.683' N	122° 31.282' W
Landmark		41° 53.902' N	122° 52.778' W
Staging Area		41° 49.833' N	122° 57.196' W
Staging Area		41° 49.982' N	122° 39.835' W
Staging Area		41° 50.578' N	122° 41.057' W
Staging Area		41° 51.867' N	122° 43.704' W
Staging Area		41° 44.541' N	122° 58.834' W
Staging Area		41° 48.045' N	122° 00.057' W
Staging Area		41° 49.562' N	122° 58.503' W



- Mobile Retardant Base
- Helispot
- Sling Site
- Division Break
- Incident Command Post
- Drop Point
- Camp
- Staging Area
- Landmark
- Mobile Weather Unit
- Internet Access
- Repeater
- Contained
- Uncontained
- Access or Improved Road

Transportation

- Expressway
- Local Connector
- Local Road
- Ramp
- 4WD

Motor Vehicle Use Map: Roads

- Roads open to all Vehicles, Yearlong
- Roads open to all Vehicles, Seasonal
- Roads open to hwy legal vehicles only, Yearlong
- Roads open to hwy legal vehicles only, Seasonal

PBS Transportation Lines

- Road - Closed
- Road - Light Duty - Dirt
- Road - Light Duty - Gravel
- Road - Light Duty - Paved
- Road - Light Duty - Unspecified Composition
- Road - Unimproved
- Trails

0 1.75 3.5
 0 1.75 3.5
 Miles

↑

Kilometers

1:50,000

Datum: North American 1983