

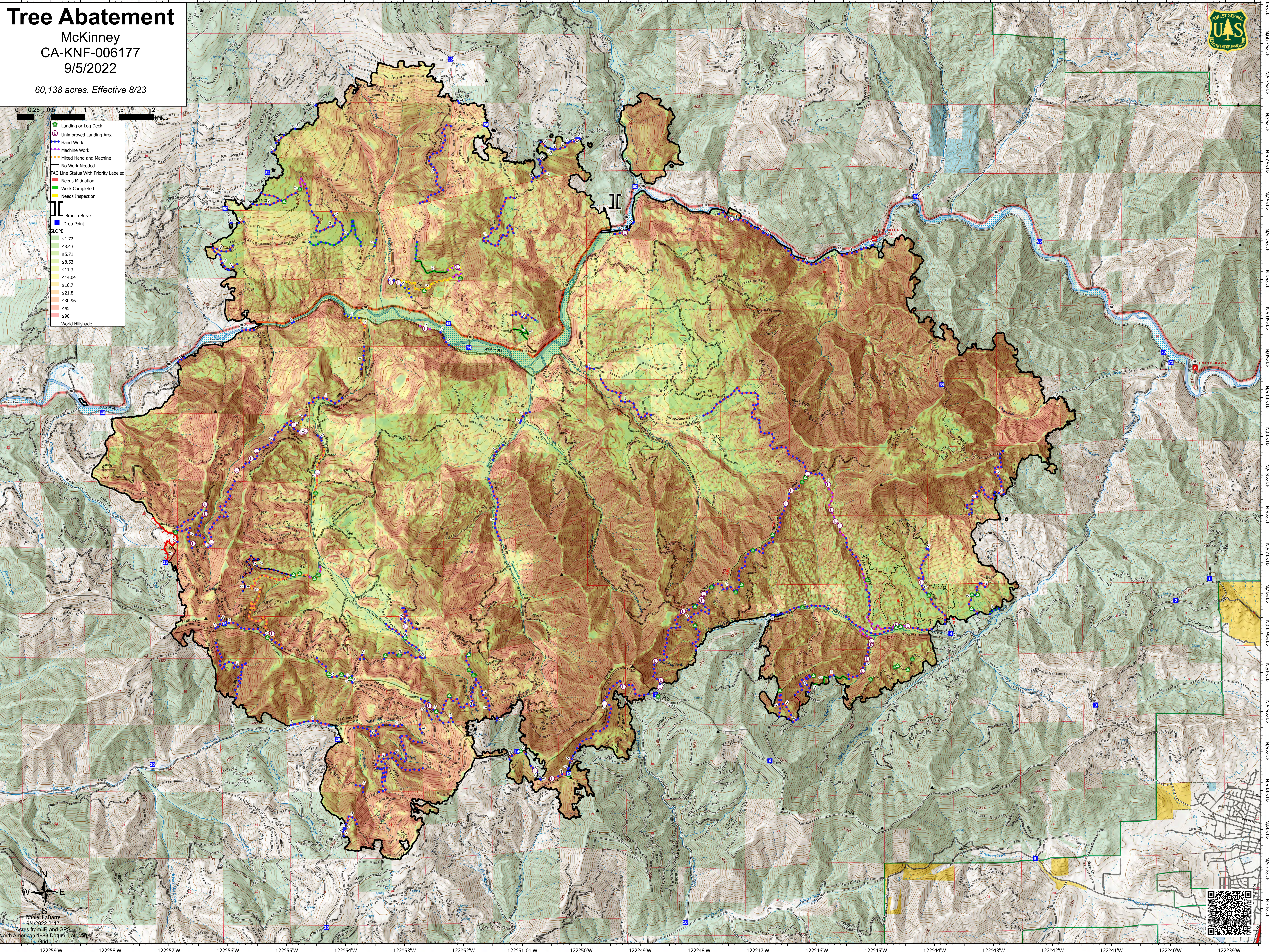
# Tree Abatement

McKinney  
CA-KNF-006177  
9/5/2022

60,138 acres. Effective 8/23



- Landing or Log Deck
- Unimproved Landing Area
- Hand Work
- Machine Work
- Mixed Hand and Machine
- No Work Needed
- TAG Line Status With Priority Labeled
- Needs Mitigation
- Work Completed
- Needs Inspection
- Branch Break
- Drop Point
- SLOPE
  - ≤1.72
  - ≤3.43
  - ≤5.71
  - ≤8.53
  - ≤11.3
  - ≤14.04
  - ≤16.7
  - ≤21.8
  - ≤30.96
  - ≤45
  - ≤90
- World Hillshade



Daniel LaBarre  
9/4/2022 2117  
Acres from IR and GPS  
North American 1983 Datum, Lat/Long  
Grid

