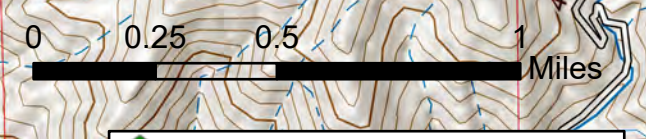




Tree Abatement East
 McKinney
 CA-KNF-006177
 9/13/2022
 60,138 acres. Effective 8/23



Legend

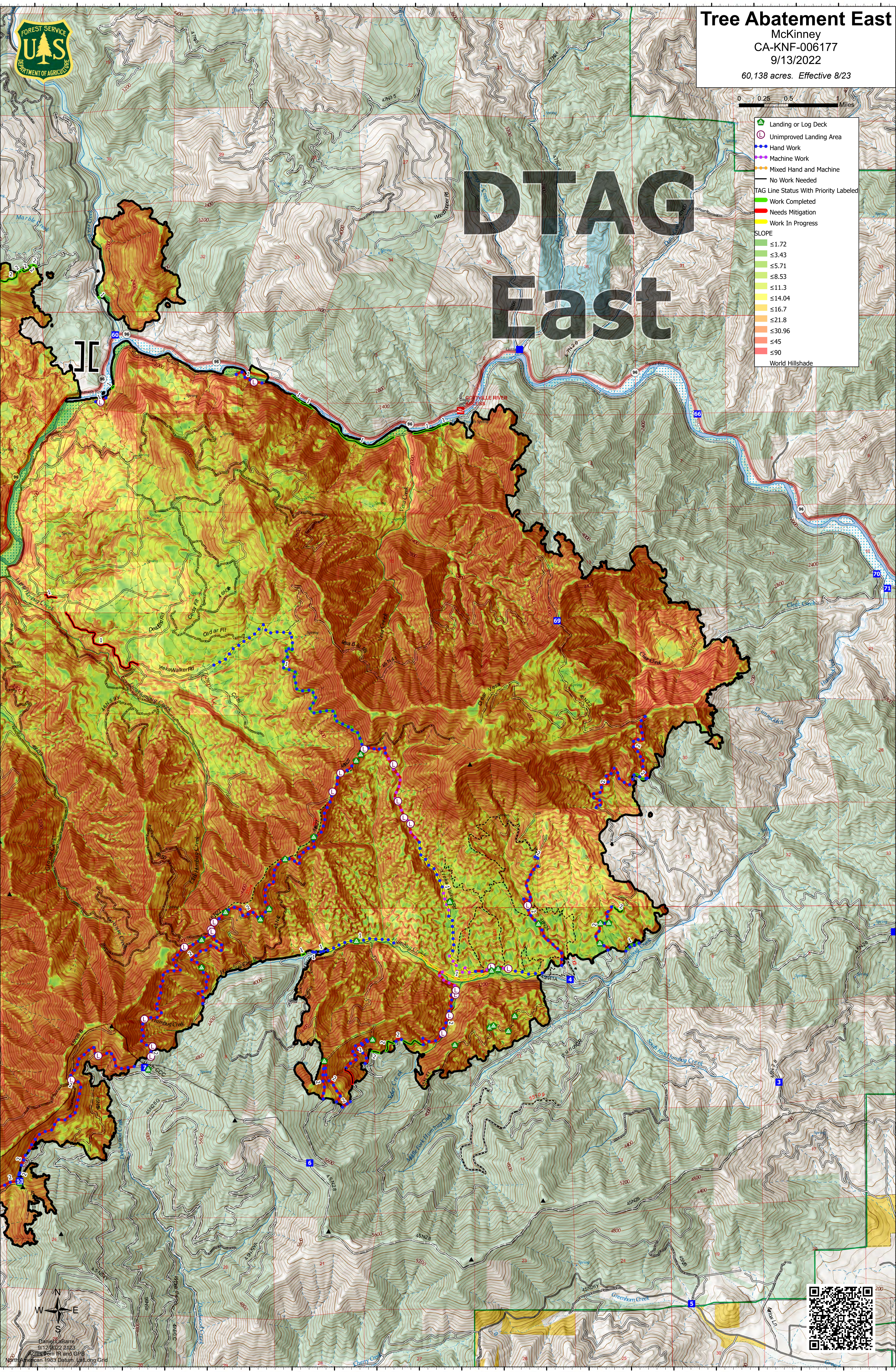
- Landing or Log Deck (Green circle with 'L')
- Unimproved Landing Area (Red circle with 'L')
- Hand Work (Blue dashed line)
- Machine Work (Purple dashed line)
- Mixed Hand and Machine (Orange dashed line)
- No Work Needed (Black solid line)
- TAG Line Status With Priority Labeled (Numbered lines)
- Work Completed (Green fill)
- Needs Mitigation (Yellow fill)
- Work In Progress (Red fill)

SLOPE

- ≤1.72 (Lightest green)
- ≤3.43 (Light green)
- ≤5.71 (Medium green)
- ≤8.53 (Yellow-green)
- ≤11.3 (Yellow)
- ≤14.04 (Light orange)
- ≤16.7 (Orange)
- ≤21.8 (Dark orange)
- ≤30.96 (Red-orange)
- ≤45 (Red)
- ≤90 (Dark red)

World Hillshade

DTAG East



Daniel L. Barre
 9/12/2022 2:23
 Area from IR and GPS
 North American 1983 Datum, Lull Long Grid

