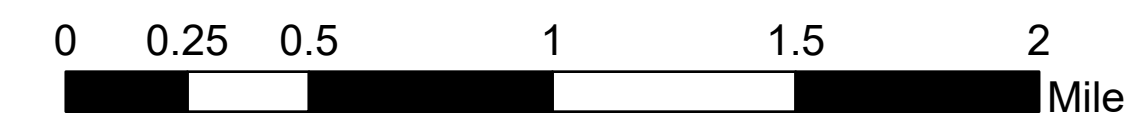


# TAG w/Slope

McKinney  
CA-KNF-006177  
09/20/2022

60,138 acres. Effective 8/23/2022



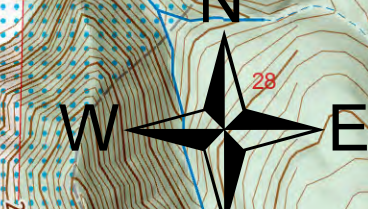
- Landing or Log Deck
  - Unimproved Landing Area
  - Hand Work
  - Machine Work
  - Mixed Hand and Machine
  - No Work Needed
  - TAG Line Status With Priority Labeled
  - Work Completed
  - Needs Mitigation
  - Work In Progress
  - Branch Point
  - Drop Point
- Slope
- ≤1.72
  - ≤3.43
  - ≤5.14
  - ≤6.86
  - ≤8.57
  - ≤10.29
  - ≤12.00
  - ≤13.71
  - ≤15.43
  - ≤17.14
  - ≤18.86
  - ≤20.57
  - ≤22.29
  - ≤24.00
  - ≤25.71
  - ≤27.43
  - ≤29.14
  - ≤30.86
  - ≤32.57
  - ≤34.29
  - ≤36.00
  - ≤37.71
  - ≤39.43
  - ≤41.14
  - ≤42.86
  - ≤44.57
  - ≤46.29
  - ≤48.00
  - ≤49.71
  - ≤51.43
  - ≤53.14
  - ≤54.86
  - ≤56.57
  - ≤58.29
  - ≤59.71
  - ≤61.43
  - ≤63.14
  - ≤64.86
  - ≤66.57
  - ≤68.29
  - ≤69.71
  - ≤71.43
  - ≤73.14
  - ≤74.86
  - ≤76.57
  - ≤78.29
  - ≤79.71
  - ≤81.43
  - ≤83.14
  - ≤84.86
  - ≤86.57
  - ≤88.29
  - ≤89.71
  - ≤91.43
  - ≤93.14
  - ≤94.86
  - ≤96.57
  - ≤98.29
  - ≤99.71



# DTAG East

# DTAG West

Work Completed **13.9 Miles**    Work In Progress **10.2 Miles**    Need Mitigation **51.5 Miles**



Daniel LaBarre  
9/19/2022 7:34  
Acres from IR and GPS  
North American 1983 Datum, Lat/Long  
Grid

